



COLORADO

Department of Transportation

2016 Pedestrian Count Summary



**Non-Motorized Monitoring
2016 Counter Summary
8/31/2017**

Count Site Information

Location: Highline Canal Trail
Count Mode: Pedestrian
Count Site ID: P90009
Lat/Long: 39.67427 / -104.88004
Facility Type: Multi-Use Trail
IN Direction:
OUT Direction:

Travel Volume Statistics

Total Volume: 62,945
AADT: 194
Weekday/Weekend Index (WD/WE): 0.79
AM-PM/Mid-Day Index (AMPM/Mid-Day): 0.48
Directional Split (IN / OUT): 51% 49%
Peak Day: 2811

DOW Averages:

Annual Average Day of the Week (AADW)

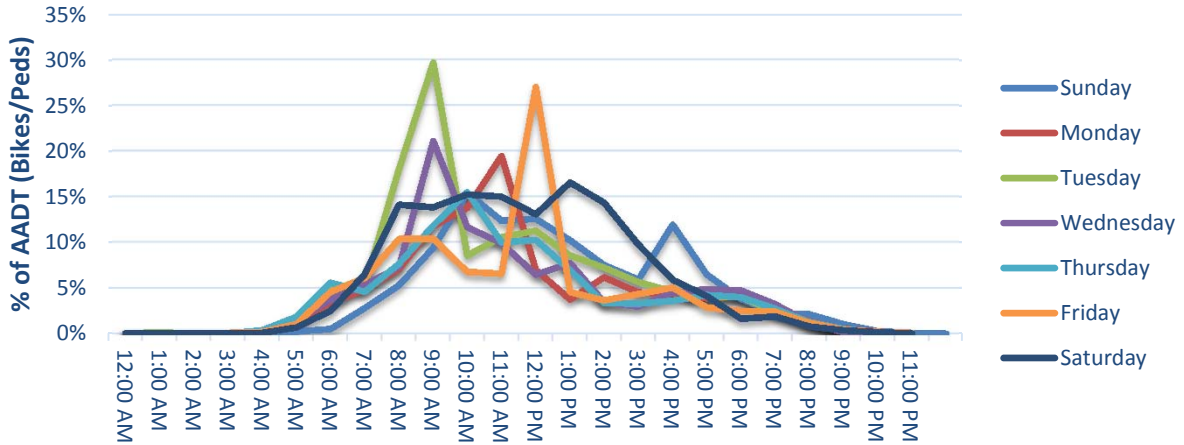
Day of Week	Total	IN	OUT
Sunday	221	118	103
Monday	174	90	84
Tuesday	209	109	100
Wednesday	175	88	87
Thursday	167	77	90
Friday	175	87	88
Saturday	234	118	115

Data Quality

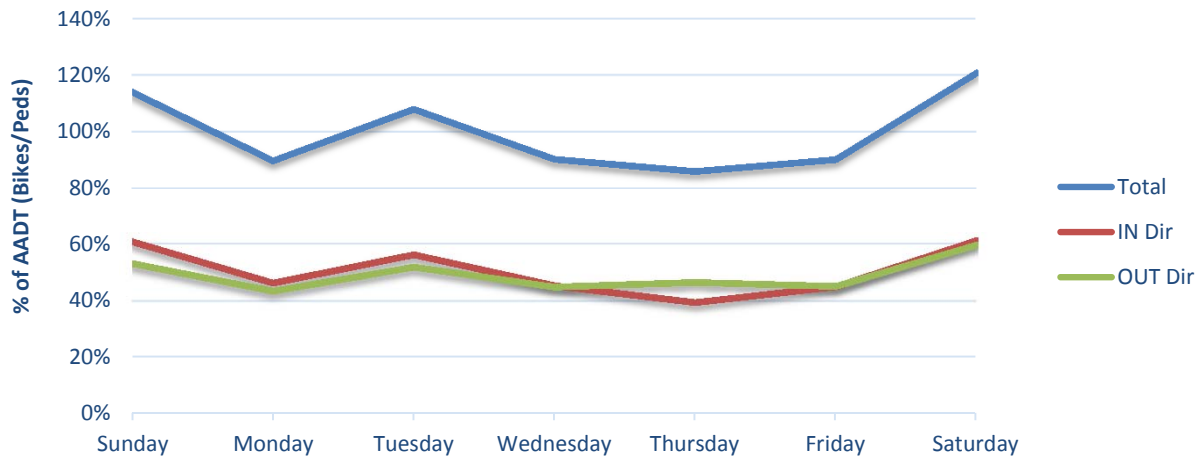
Days of Data: 325
Percent Complete (Year): 89%
Common Errors / Notes:

Traffic Patterns

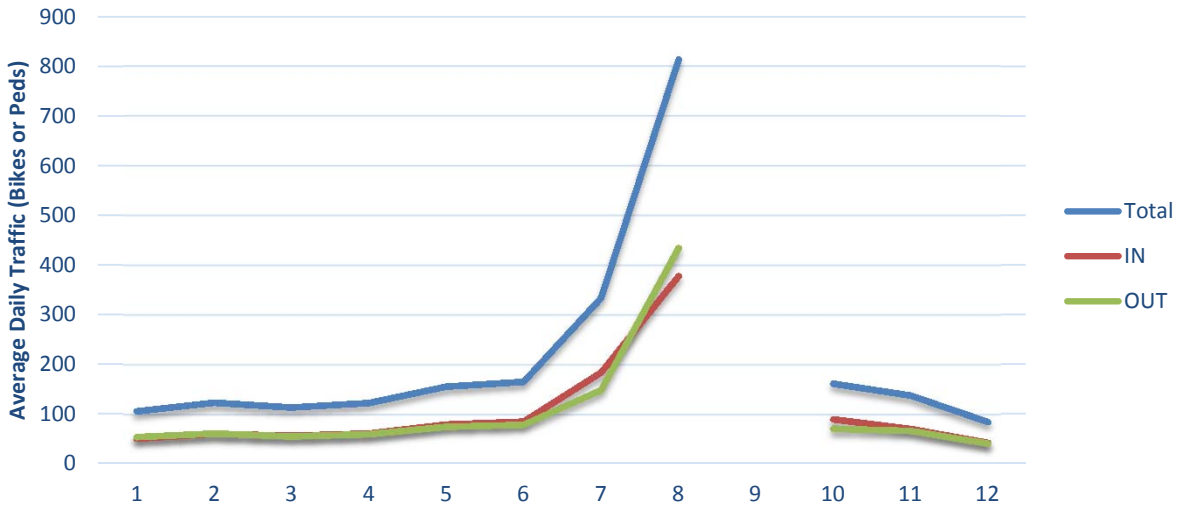
Hour of Day



Day of Week



Month of Year





**Non-Motorized Monitoring
2016 Counter Summary
8/31/2017**

Count Site Information

Location: 8th St - West of N Erie Ave
Count Mode: Pedestrian
Count Site ID: P90010
Lat/Long: 38.27448 / -104.60178
Facility Type: On Sidewalk
IN Direction: Westbound
OUT Direction: Eastbound

Travel Volume Statistics

Total Volume: 37,753
AADT: 103
Weekday/Weekend Index (WD/WE): 1.31
AM-PM/Mid-Day Index (AMPM/Mid-Day): 0.55
Directional Split (IN / OUT): 55% 45%
Peak Day: 176

DOW Averages:

Annual Average Day of the Week (AADW)

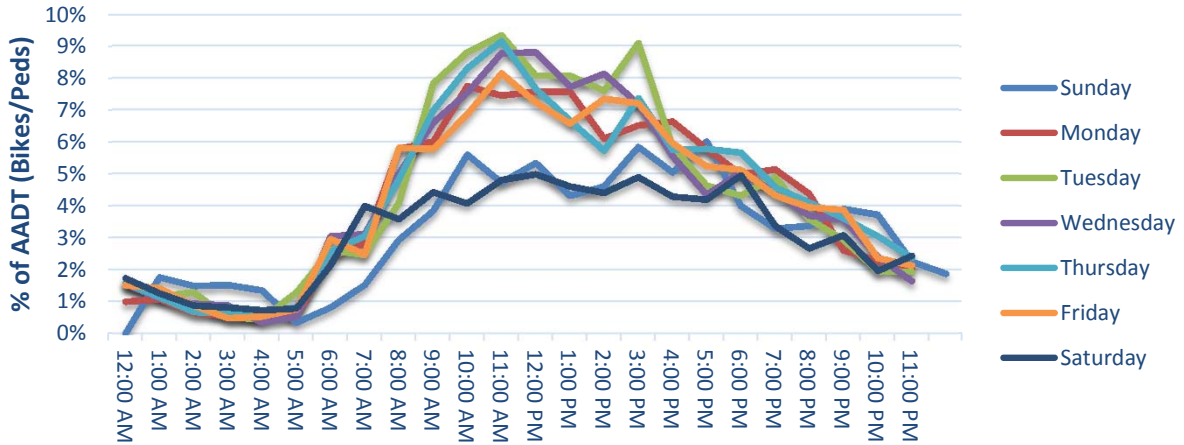
Day of Week	Total	IN	OUT
Sunday	84	45	39
Monday	111	60	51
Tuesday	116	62	54
Wednesday	112	61	50
Thursday	109	60	49
Friday	106	59	47
Saturday	85	48	37

Data Quality

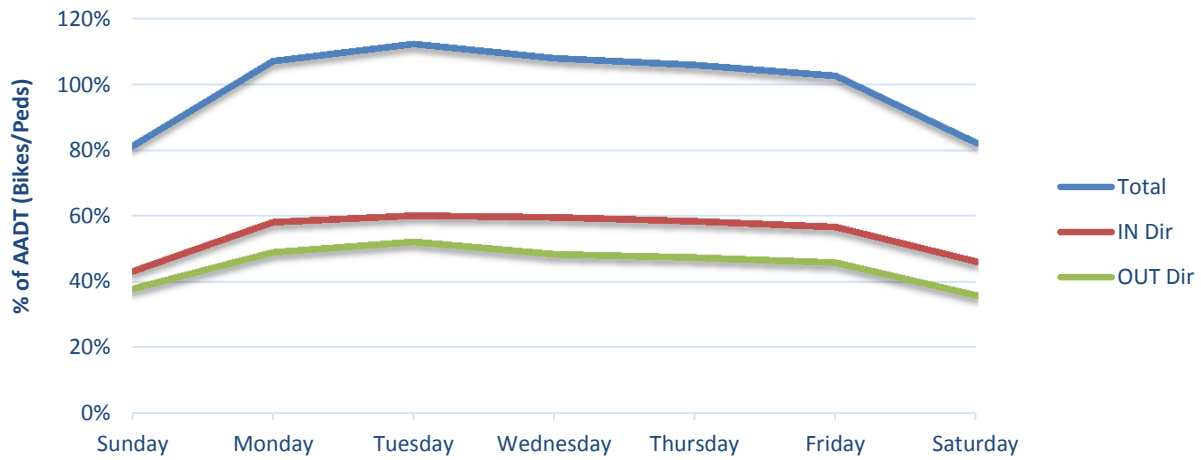
Days of Data: 366
Percent Complete (Year): 100%
Common Errors / Notes:

Traffic Patterns

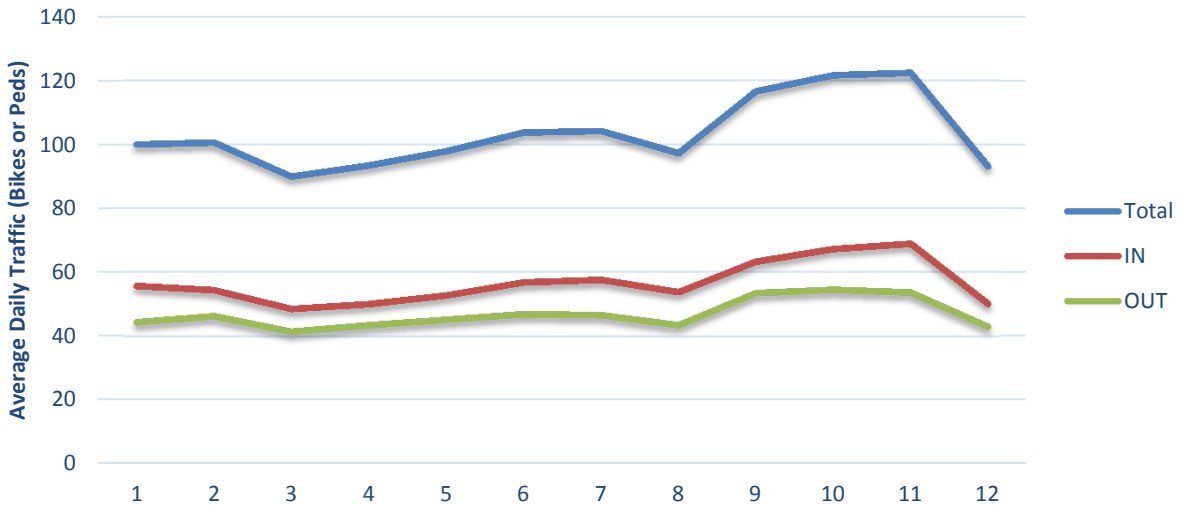
Hour of Day



Day of Week



Month of Year





**Non-Motorized Monitoring
2016 Counter Summary
8/31/2017**

Count Site Information

Location: 8th St - West of N Erie Ave
Count Mode: Pedestrian
Count Site ID: P90011
Lat/Long: 38.27432 / -104.60265
Facility Type: On Sidewalk
IN Direction: Westbound
OUT Direction: Eastbound

Travel Volume Statistics

Total Volume: 28,105
AADT: 77
Weekday/Weekend Index (WD/WE): 1.31
AM-PM/Mid-Day Index (AMPM/Mid-Day): 0.58
Directional Split (IN / OUT): 48% 52%
Peak Day: 149

DOW Averages:

Annual Average Day of the Week (AADW)

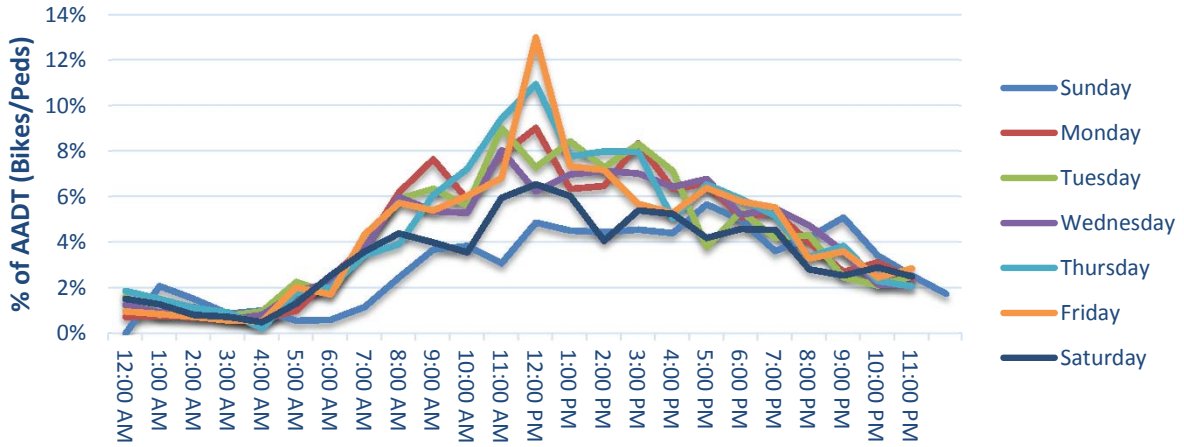
Day of Week	Total	IN	OUT
Sunday	61	28	32
Monday	84	39	45
Tuesday	85	40	44
Wednesday	80	38	42
Thursday	83	39	44
Friday	82	40	42
Saturday	66	32	34

Data Quality

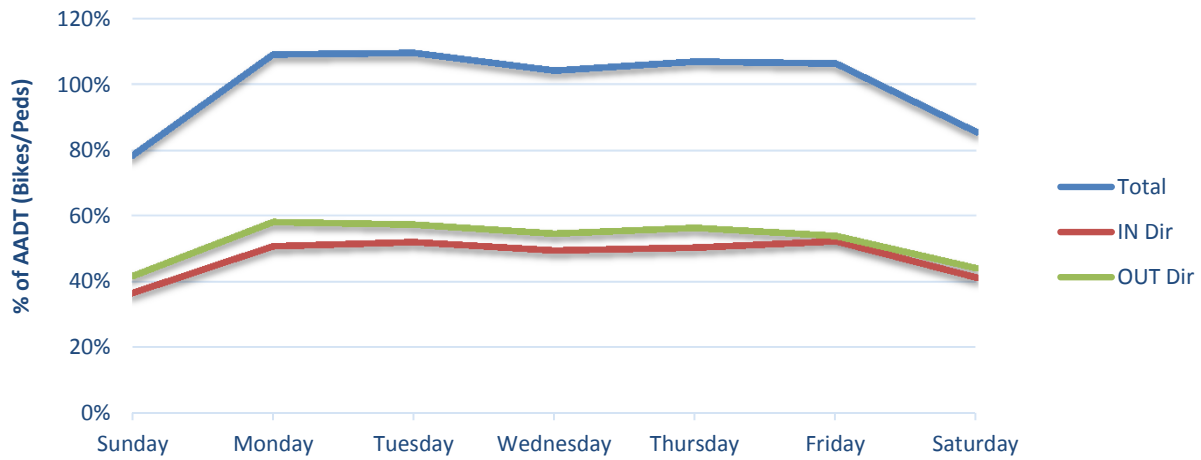
Days of Data: 364
Percent Complete (Year): 100%
Common Errors / Notes:

Traffic Patterns

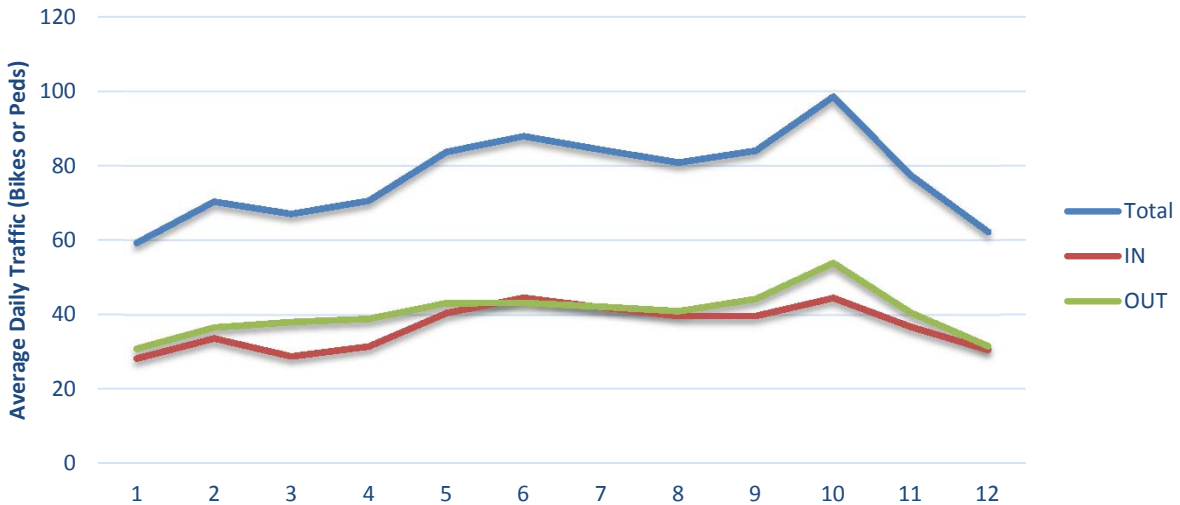
Hour of Day



Day of Week



Month of Year





**Non-Motorized Monitoring
2016 Counter Summary
8/31/2017**

Count Site Information

Location: Platte River Trail - South of Clear Creek Trail
 Count Mode: Pedestrian
 Count Site ID: P90013
 Lat/Long: 39.82708 / -104.94971
 Facility Type: Multi-Use Trail
 IN Direction: Eastbound
 OUT Direction: Westbound

Travel Volume Statistics

Total Volume: 53,596
 AADT: 178
 Weekday/Weekend Index (WD/WE): 0.87
 AM-PM/Mid-Day Index (AMPM/Mid-Day): 0.86
 Directional Split (IN / OUT): 58% 42%
 Peak Day: 746

DOW Averages:

Annual Average Day of the Week (AADW)

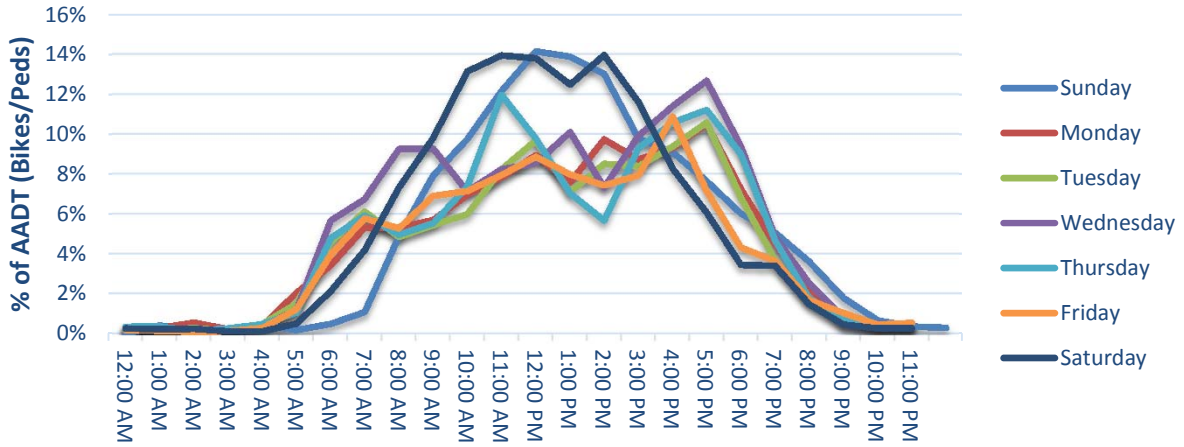
Day of Week	Total	IN	OUT
Sunday	192	109	83
Monday	168	99	69
Tuesday	160	97	63
Wednesday	195	114	81
Thursday	172	102	70
Friday	158	89	69
Saturday	198	112	86

Data Quality

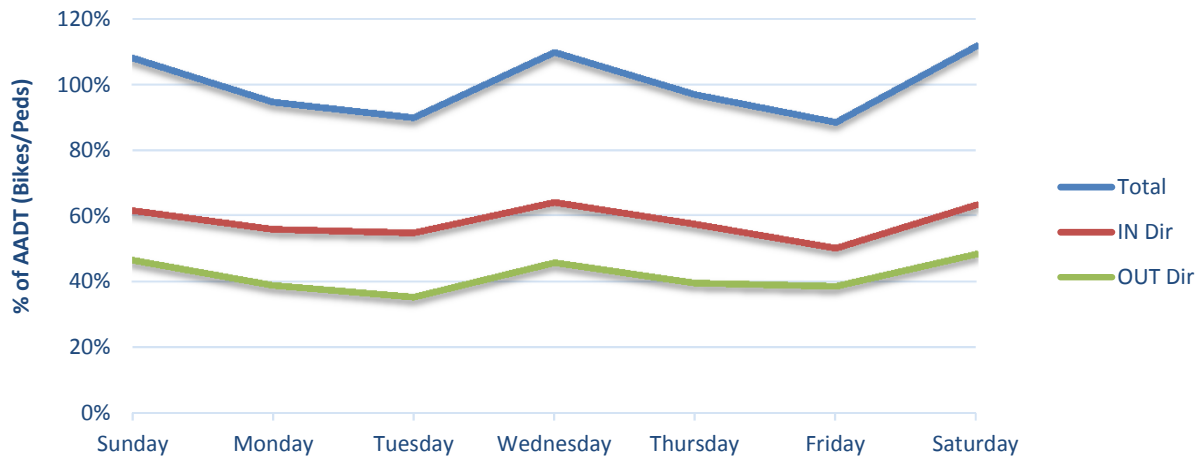
Days of Data: 302
 Percent Complete (Year): 83%
 Common Errors / Notes:

Traffic Patterns

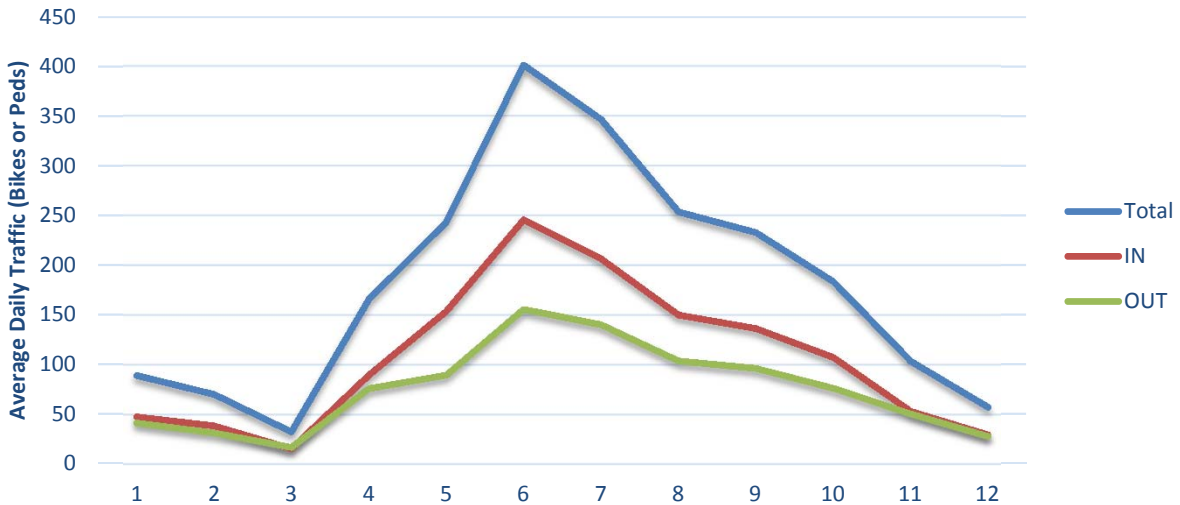
Hour of Day



Day of Week



Month of Year





**Non-Motorized Monitoring
2016 Counter Summary
8/31/2017**

Count Site Information

Location: Multi-Use Trail @ Copper Mountain
Count Mode: Pedestrian
Count Site ID: P90015
Lat/Long: 39.50018, -106.16472
Facility Type: Multi-Use Trail
IN Direction: Eastbound
OUT Direction: Westbound

Travel Volume Statistics

Total Volume: 19,072
AADT: 53
Weekday/Weekend Index (WD/WE): 0.64
AM-PM/Mid-Day Index (AMPM/Mid-Day): 0.38
Directional Split (IN / OUT): 51% 49%
Peak Day: 248

DOW Averages:

Annual Average Day of the Week (AADW)

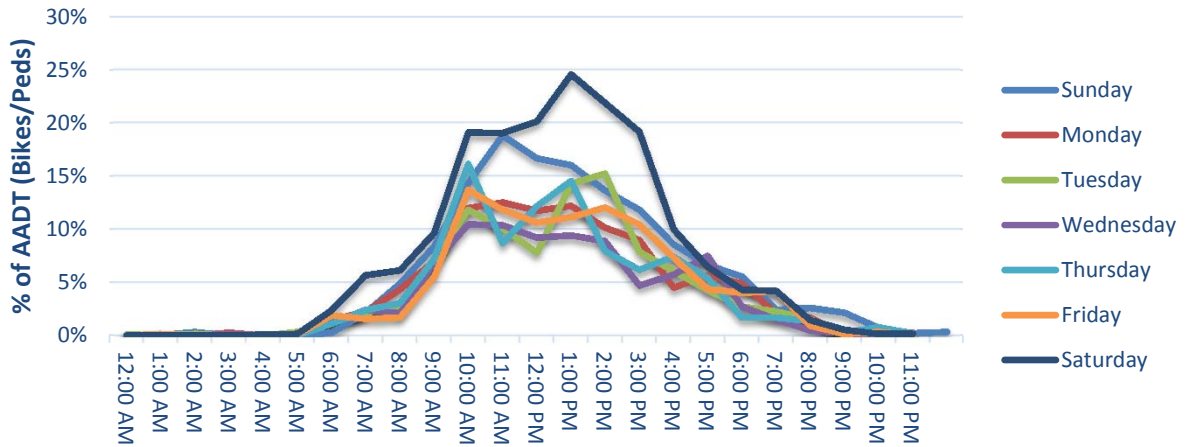
Day of Week	Total	IN	OUT
Sunday	63	32	31
Monday	47	25	22
Tuesday	45	23	21
Wednesday	41	21	19
Thursday	47	25	22
Friday	50	26	24
Saturday	81	40	41

Data Quality

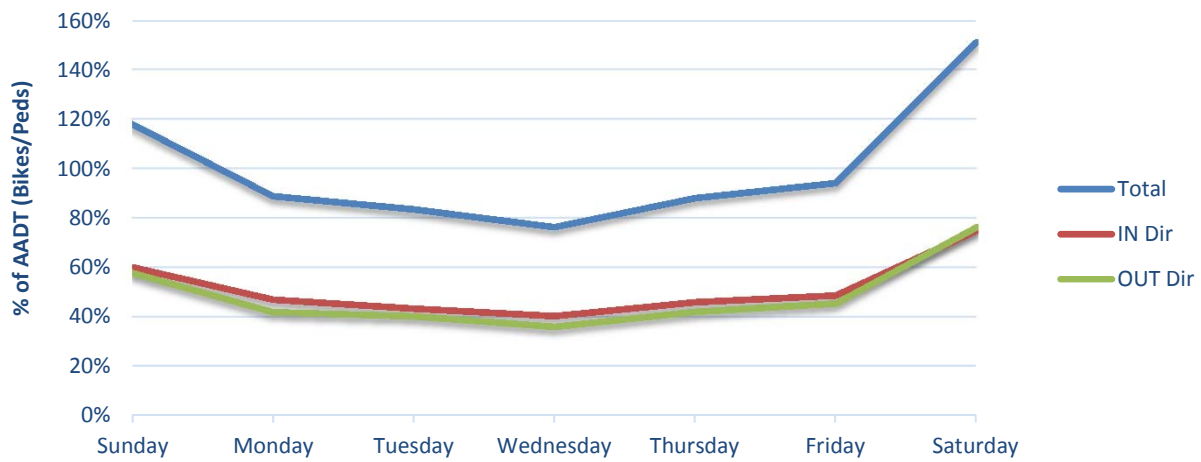
Days of Data: 358
Percent Complete (Year): 98%
Common Errors / Notes:

Traffic Patterns

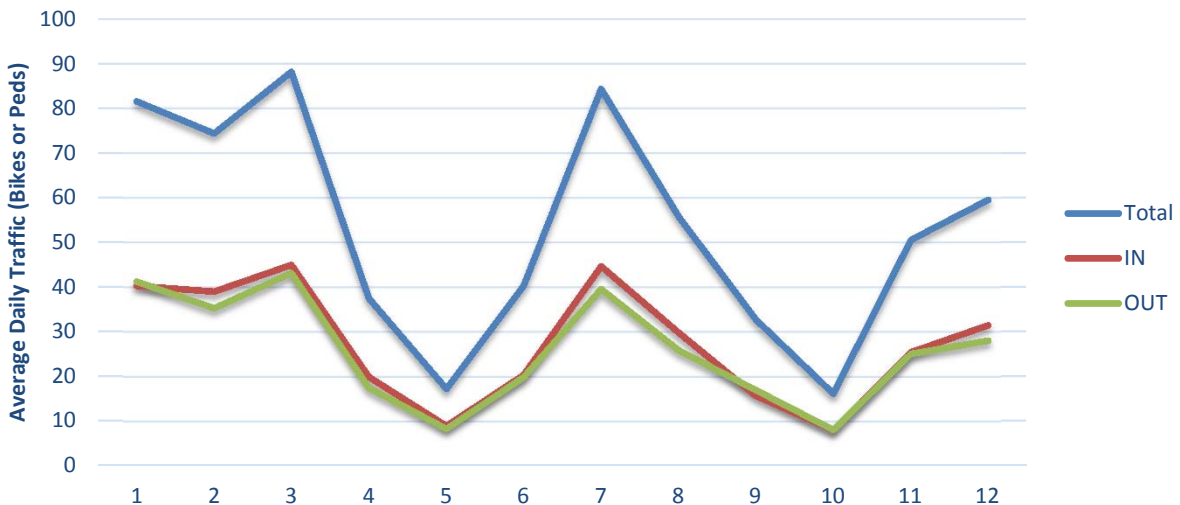
Hour of Day



Day of Week



Month of Year





**Non-Motorized Monitoring
2016 Counter Summary
8/31/2017**

Count Site Information

Location: Sidepath along Broadway - Between West Ave & River
Count Mode: Pedestrian
Count Site ID: P90018
Lat/Long: 39.06811 / -108.57970
Facility Type: Sidepath
IN Direction: Eastbound
OUT Direction: Westbound

Travel Volume Statistics

Total Volume: 6,331
AADT: 28
Weekday/Weekend Index (WD/WE): 1.16
AM-PM/Mid-Day Index (AMPM/Mid-Day): 0.75
Directional Split (IN / OUT): 49% 51%
Peak Day: 64

DOW Averages:

Annual Average Day of the Week (AADW)

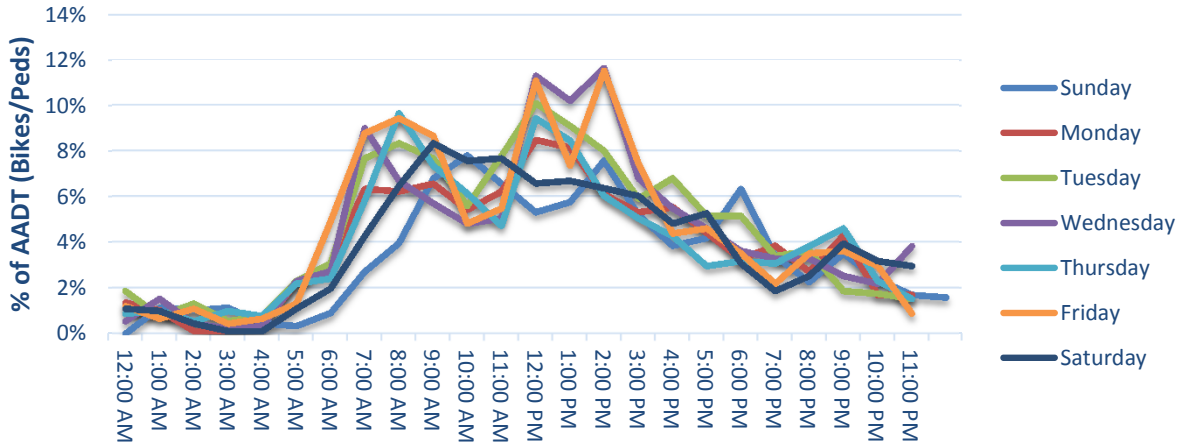
Day of Week	Total	IN	OUT
Sunday	24	12	12
Monday	26	13	14
Tuesday	30	14	16
Wednesday	30	14	16
Thursday	27	13	14
Friday	31	15	15
Saturday	26	13	13

Data Quality

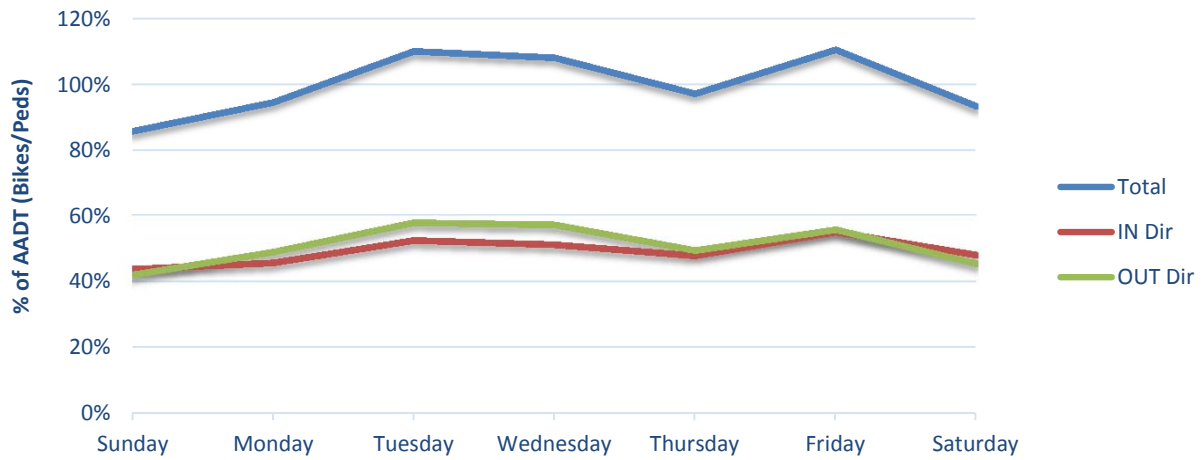
Days of Data: 229
Percent Complete (Year): 63%
Common Errors / Notes:

Traffic Patterns

Hour of Day



Day of Week



Month of Year





**Non-Motorized Monitoring
2016 Counter Summary
8/31/2017**

Count Site Information

Location: Mason Trail - Fort Collins
Count Mode: Pedestrian
Count Site ID: P90020
Lat/Long: 40.56298 / -105.07987
Facility Type: Multi-use Path
IN Direction: Northbound
OUT Direction: Southbound

Travel Volume Statistics

Total Volume: 101,134
AADT: 276
Weekday/Weekend Index (WD/WE): 1.04
AM-PM/Mid-Day Index (AMPM/Mid-Day): 0.62
Directional Split (IN / OUT): 54% 46%
Peak Day: 592

DOW Averages:

Annual Average Day of the Week (AADW)

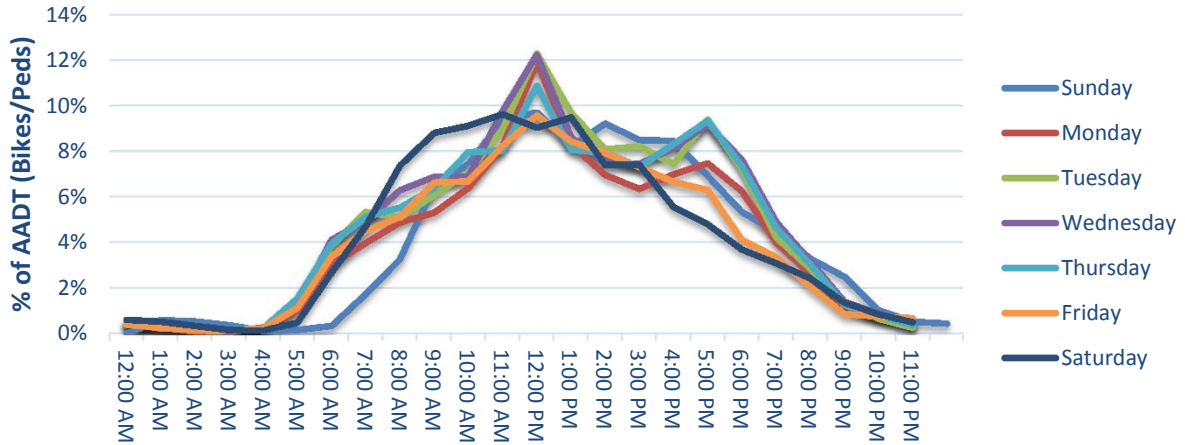
Day of Week	Total	IN	OUT
Sunday	269	146	123
Monday	268	145	123
Tuesday	293	157	136
Wednesday	296	156	139
Thursday	290	154	136
Friday	253	135	117
Saturday	267	144	123

Data Quality

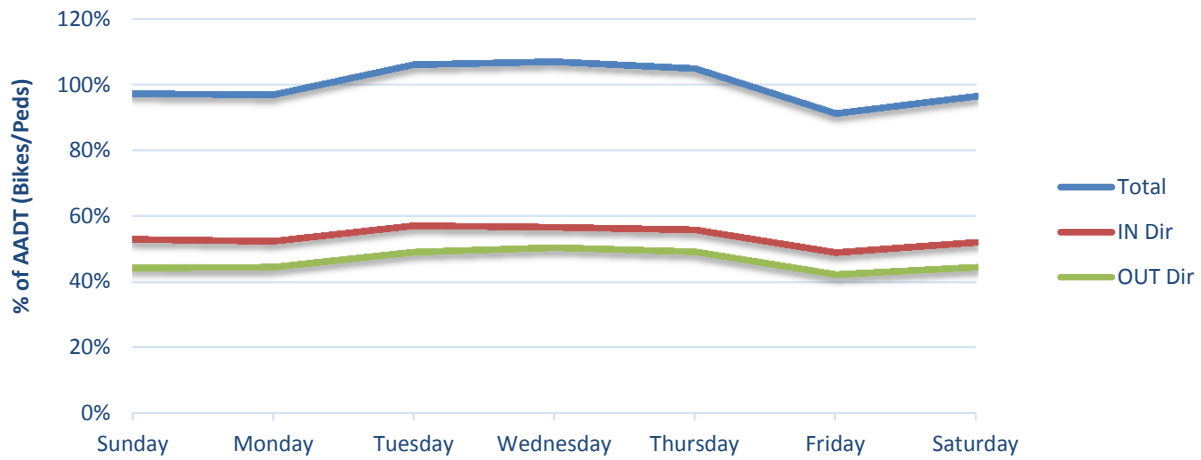
Days of Data: 366
Percent Complete (Year): 100%
Common Errors / Notes:

Traffic Patterns

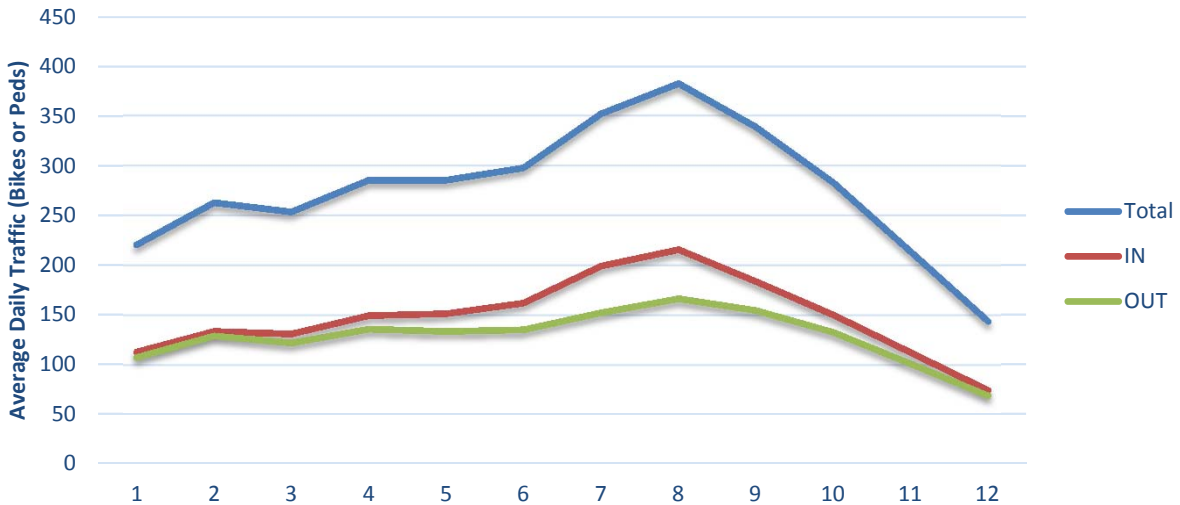
Hour of Day



Day of Week



Month of Year





**Non-Motorized Monitoring
2016 Counter Summary
8/31/2017**

Count Site Information

Location: Midland Trail - Apprx 700' west of I-25
Count Mode: Pedestrian
Count Site ID: P90021
Lat/Long: 38.83086 / -104.83680
Facility Type: Multi-Use Trail
IN Direction: Eastbound
OUT Direction: Westbound

Travel Volume Statistics

Total Volume: 14,657
AADT: 63
Weekday/Weekend Index (WD/WE): 1.06
AM-PM/Mid-Day Index (AMPM/Mid-Day): 0.65
Directional Split (IN / OUT): 58% 42%
Peak Day: 143

DOW Averages:

Annual Average Day of the Week (AADW)

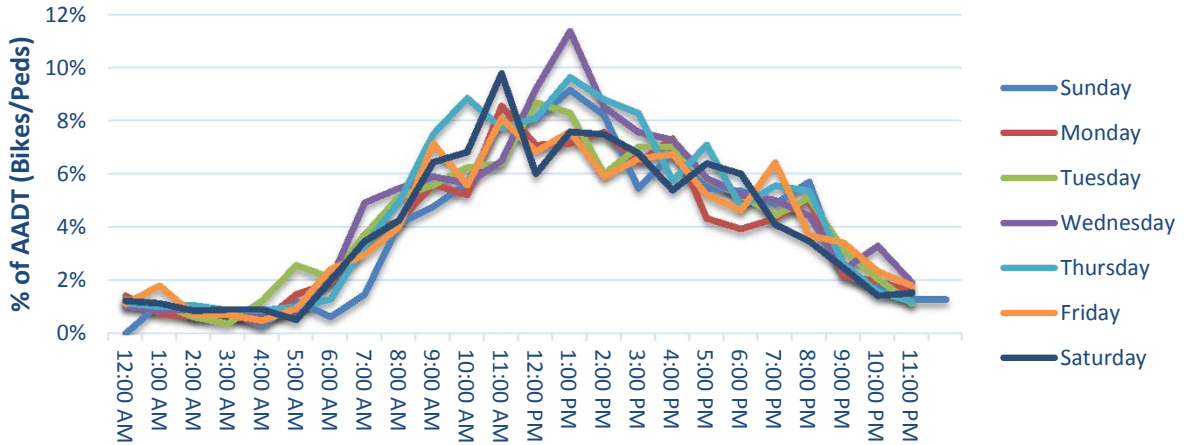
Day of Week	Total	IN	OUT
Sunday	60	34	26
Monday	59	35	24
Tuesday	64	37	27
Wednesday	68	39	29
Thursday	69	43	26
Friday	62	36	26
Saturday	62	34	27

Data Quality

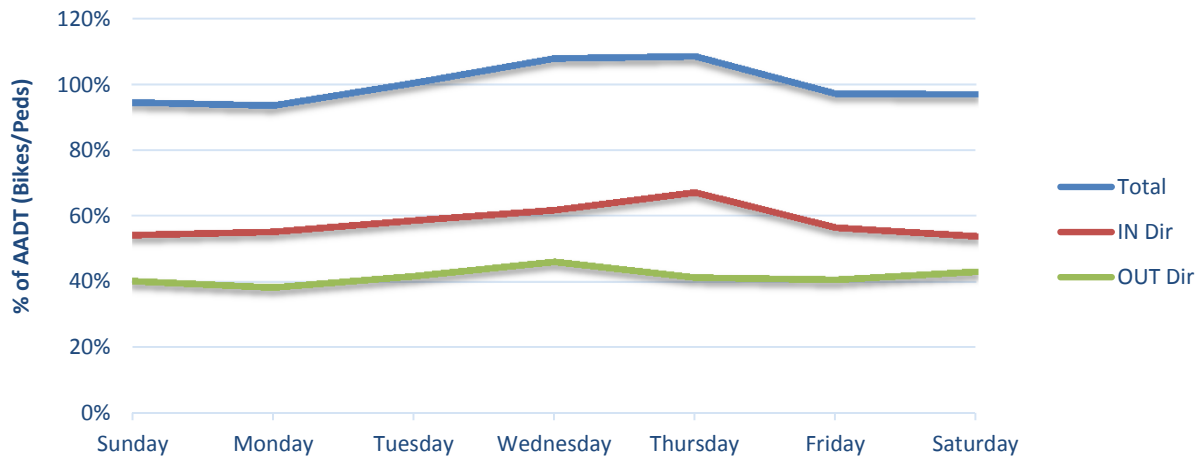
Days of Data: 231
Percent Complete (Year): 63%
Common Errors / Notes:

Traffic Patterns

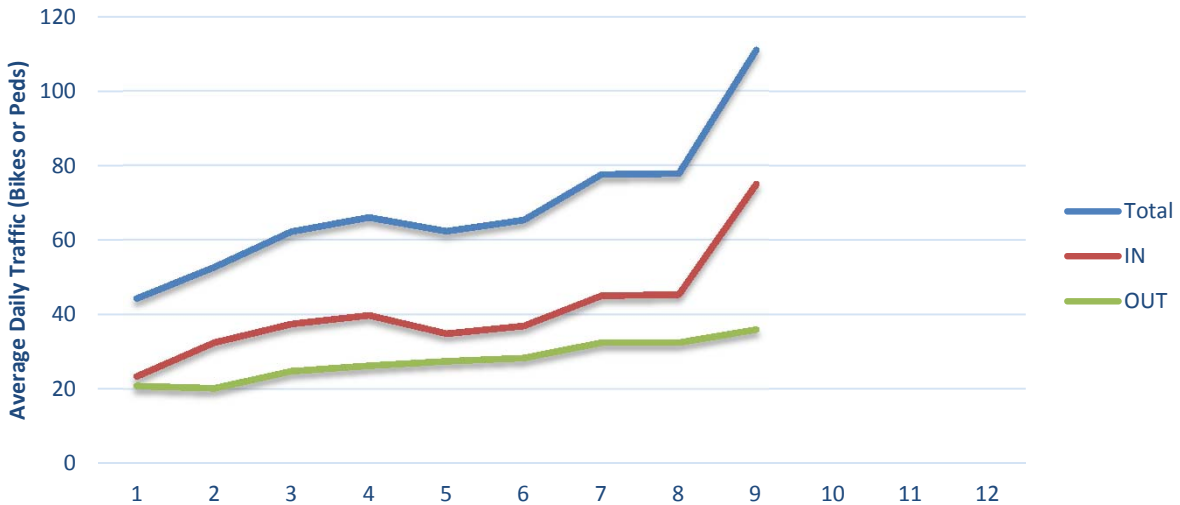
Hour of Day



Day of Week



Month of Year





**Non-Motorized Monitoring
2016 Counter Summary
8/31/2017**

Count Site Information

Location: US 36 Bikeway - Westminster
Count Mode: Pedestrian
Count Site ID: P90023
Lat/Long: 39.86781 / -105.05895
Facility Type: Multi-Use Trail
IN Direction: Northbound
OUT Direction: Southbound

Travel Volume Statistics

Total Volume: 9,159
AADT: 25
Weekday/Weekend Index (WD/WE): 0.91
AM-PM/Mid-Day Index (AMPM/Mid-Day): 0.79
Directional Split (IN / OUT): 51% 49%
Peak Day: 88

DOW Averages:

Annual Average Day of the Week (AADW)

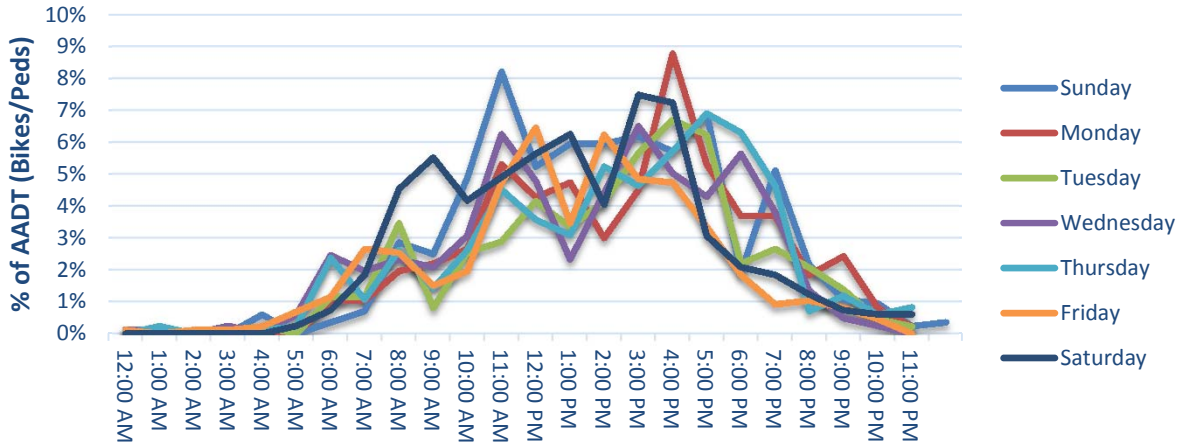
Day of Week	Total	IN	OUT
Sunday	29	16	14
Monday	27	13	14
Tuesday	24	12	12
Wednesday	25	13	12
Thursday	26	14	13
Friday	22	12	10
Saturday	25	13	12

Data Quality

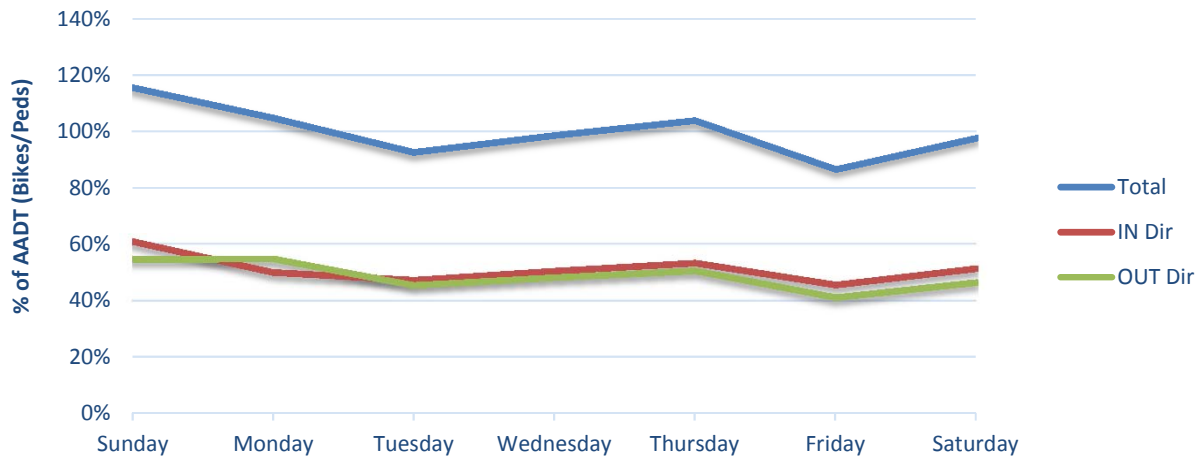
Days of Data: 360
Percent Complete (Year): 99%
Common Errors / Notes:

Traffic Patterns

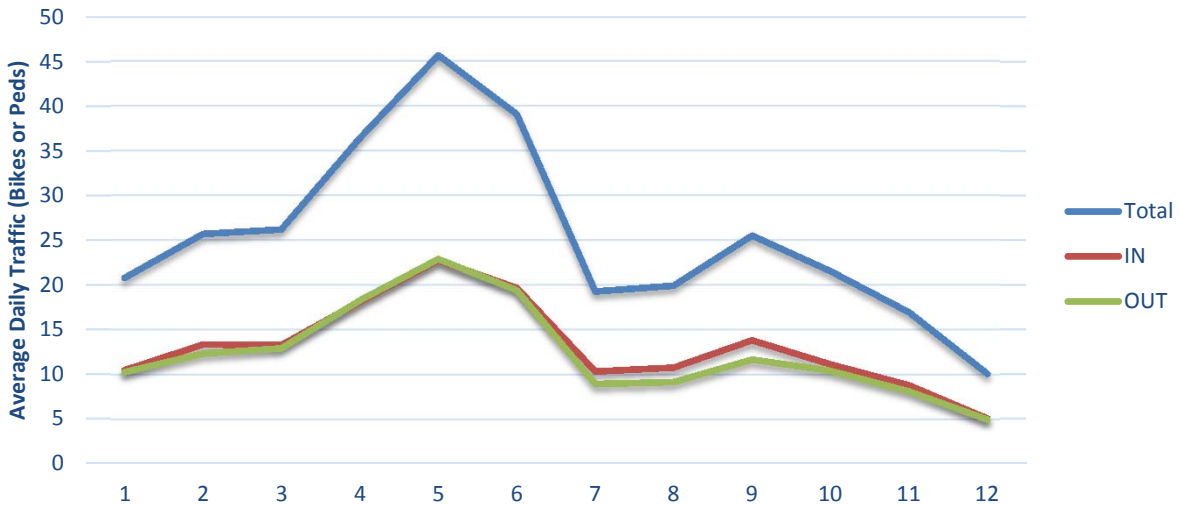
Hour of Day



Day of Week



Month of Year





**Non-Motorized Monitoring
2016 Counter Summary
8/31/2017**

Count Site Information

Location: US 36 Bikeway Broomfield - North of Uptown Ave
Count Mode: Pedestrian
Count Site ID: P90024
Lat/Long: 39.903075 / -105.083047
Facility Type: Multi-Use Path
IN Direction: Northbound
OUT Direction: Southbound

Travel Volume Statistics

Total Volume: 13,870
AADT: 41
Weekday/Weekend Index (WD/WE): 0.87
AM-PM/Mid-Day Index (AMPM/Mid-Day): 0.71
Directional Split (IN / OUT): 56% 44%
Peak Day: 146

DOW Averages:

Annual Average Day of the Week (AADW)

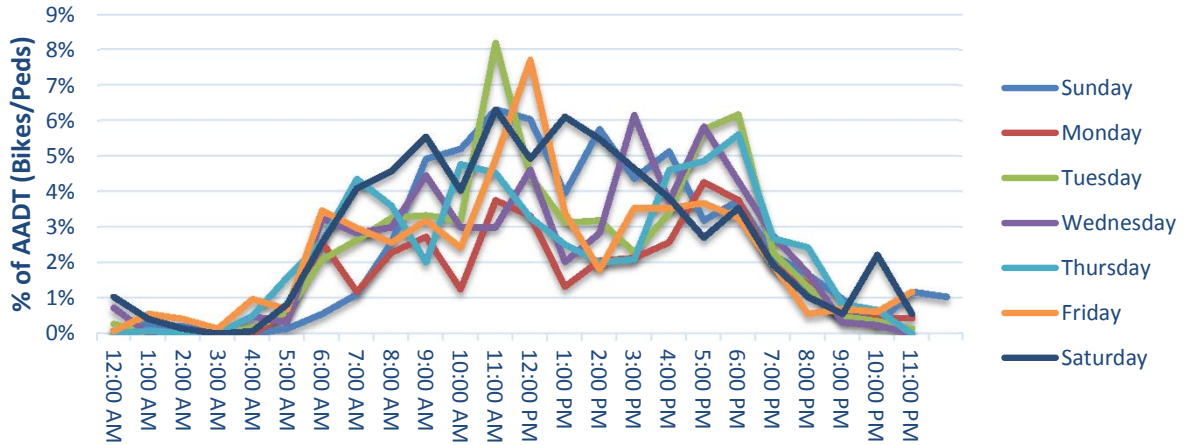
Day of Week	Total	IN	OUT
Sunday	45	26	19
Monday	37	21	16
Tuesday	42	24	19
Wednesday	40	22	18
Thursday	41	22	18
Friday	37	20	18
Saturday	46	26	20

Data Quality

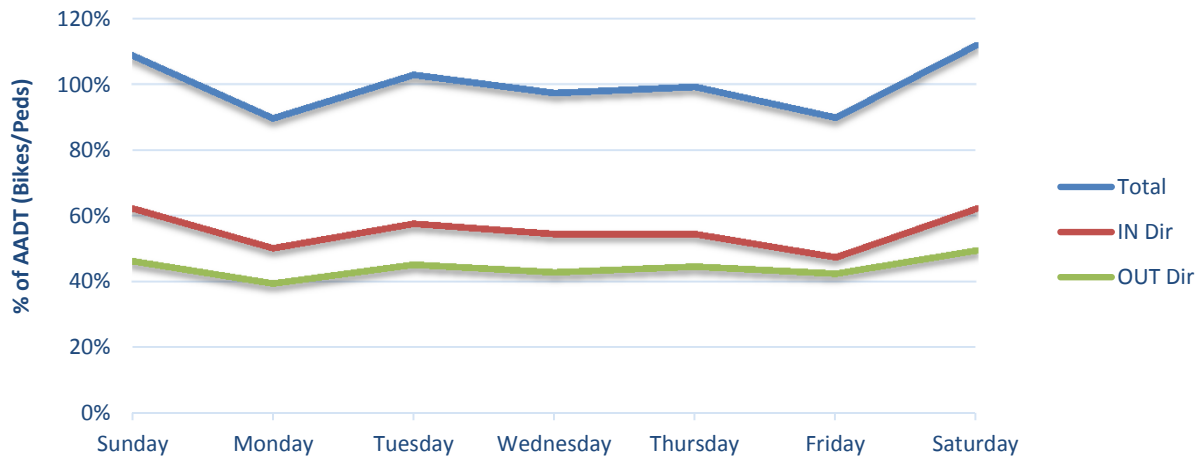
Days of Data: 337
Percent Complete (Year): 92%
Common Errors / Notes:

Traffic Patterns

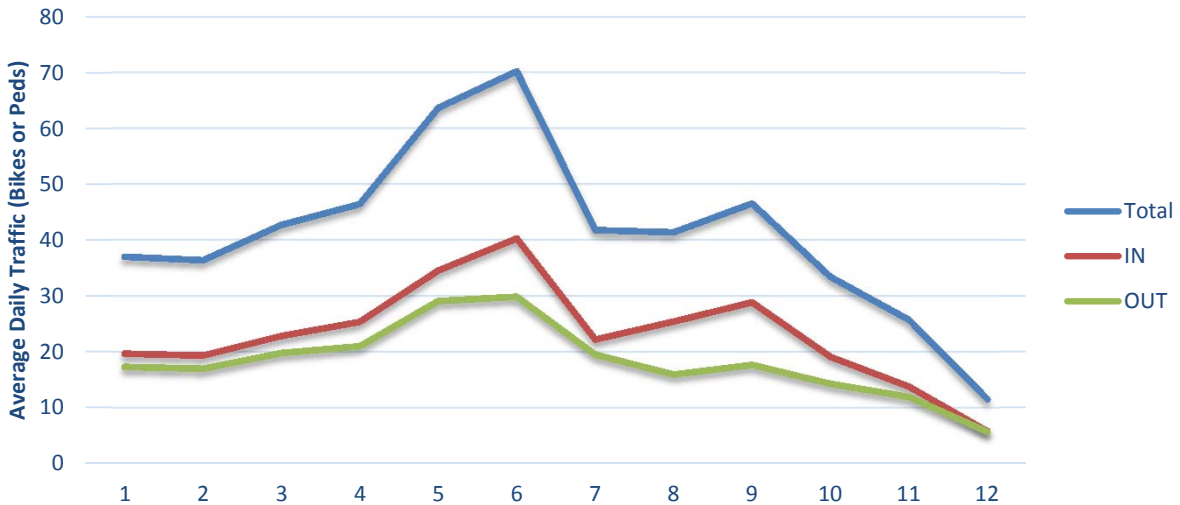
Hour of Day



Day of Week



Month of Year





**Non-Motorized Monitoring
2016 Counter Summary
8/31/2017**

Count Site Information

Location: Cherry Creek Trail at Champa St - Ped
Count Mode: Pedestrian
Count Site ID: P90028
Lat/Long: 39.74254 / -104.99987
Facility Type: Multi-Use Path
IN Direction: 0
OUT Direction: 0

Travel Volume Statistics

Total Volume: 74,739
AADT: 712
Weekday/Weekend Index (WD/WE): 1.03
AM-PM/Mid-Day Index (AMPM/Mid-Day): 0.43
Directional Split (IN / OUT): 50% 50%
Peak Day: 1291

DOW Averages:

Annual Average Day of the Week (AADW)

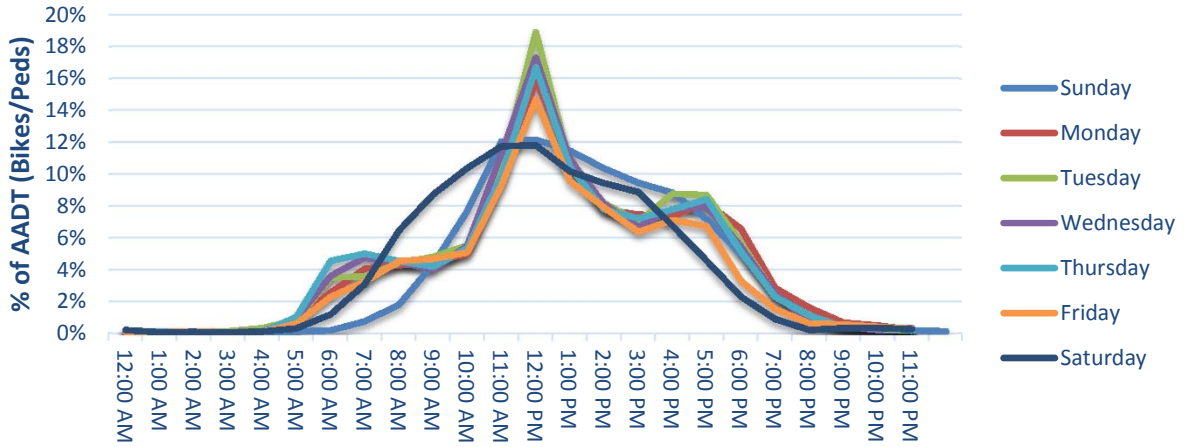
Day of Week	Total	IN	OUT
Sunday	689	351	338
Monday	723	356	367
Tuesday	755	383	372
Wednesday	739	372	367
Thursday	735	371	364
Friday	638	319	319
Saturday	704	358	345

Data Quality

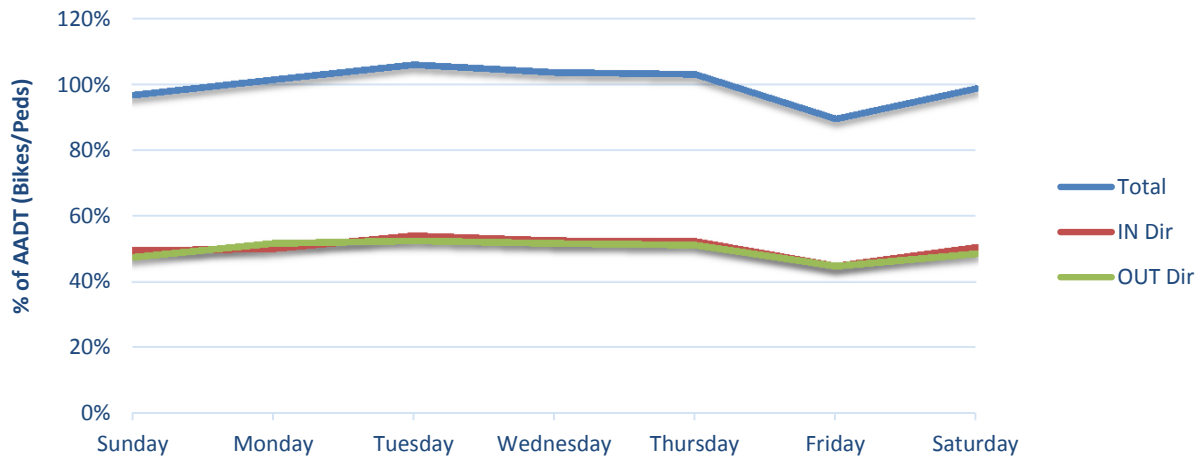
Days of Data: 105
Percent Complete (Year): 29%
Common Errors / Notes: Counter damaged/stolen spring 2016

Traffic Patterns

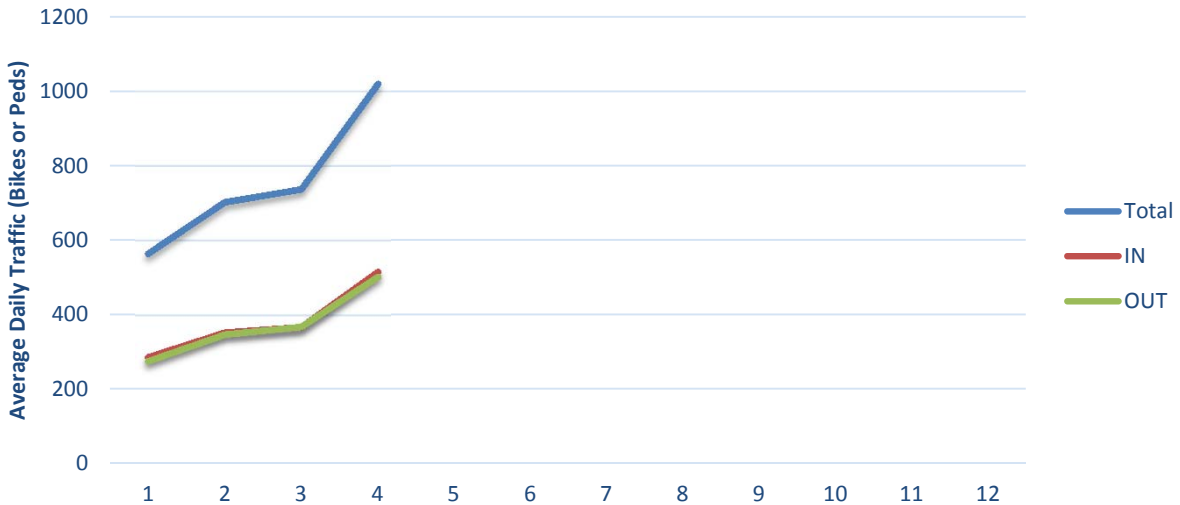
Hour of Day



Day of Week



Month of Year





**Non-Motorized Monitoring
2016 Counter Summary
8/31/2017**

Count Site Information

Location: On US 36 Bikeway-US36 on rmp from Foothills Pkwy
Count Mode: Pedestrian
Count Site ID: P90029
Lat/Long: 39.983483 / -105.229389
Facility Type: Multi-Use Path
IN Direction:
OUT Direction:

Travel Volume Statistics

Total Volume: 4,824
AADT: 28
Weekday/Weekend Index (WD/WE): 0.63
AM-PM/Mid-Day Index (AMPM/Mid-Day): 1.13
Directional Split (IN / OUT): 53% 47%
Peak Day: 84

DOW Averages:

Annual Average Day of the Week (AADW)

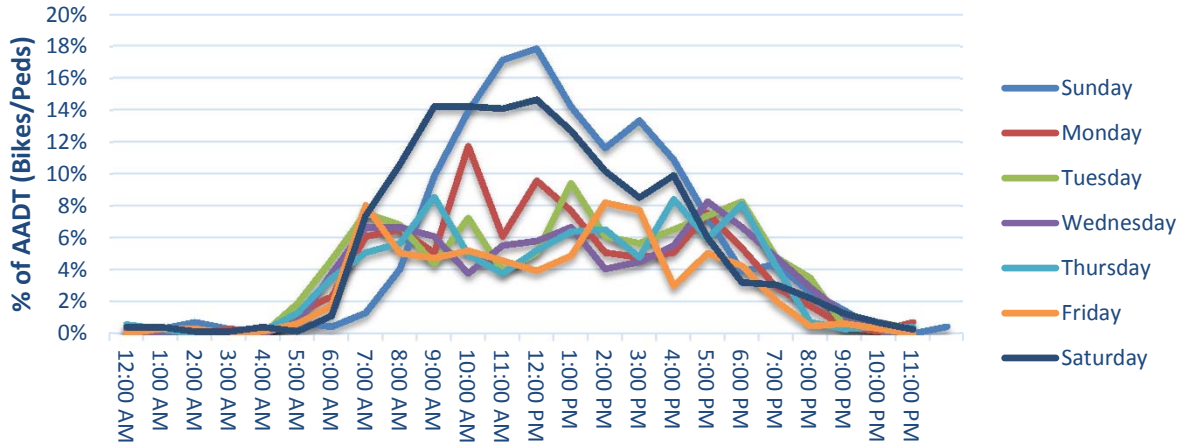
Day of Week	Total	IN	OUT
Sunday	38	18	20
Monday	25	13	12
Tuesday	26	14	12
Wednesday	23	13	10
Thursday	24	13	11
Friday	20	11	9
Saturday	38	19	18

Data Quality

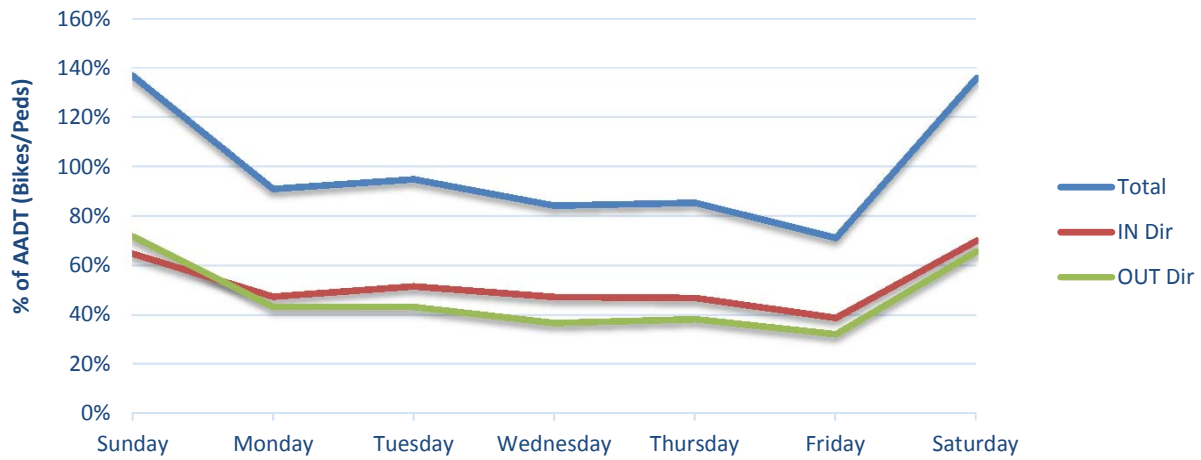
Days of Data: 174
Percent Complete (Year): 48%
Common Errors / Notes: Counter installed in summer 2016

Traffic Patterns

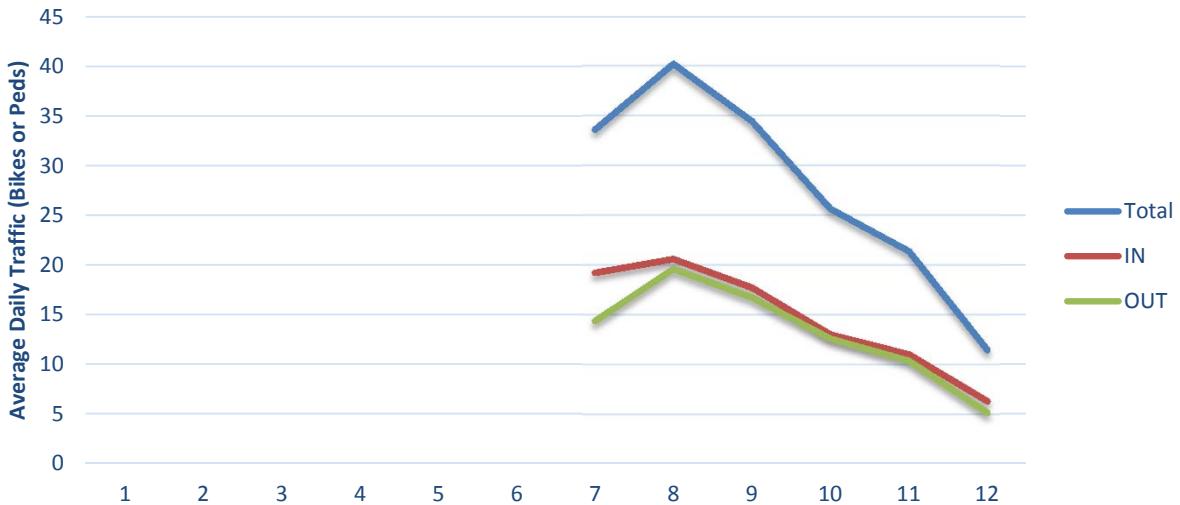
Hour of Day



Day of Week



Month of Year





Continuous Count Data Analysis

CDOT count data was analyzed to identify appropriate factor groups for each of the existing permanent continuous monitoring sites (PCMS). The ratio of average hourly volume for the peak commute periods (M-F, 7-9am and 4-6pm), to the midday average hourly volume (M-F, 11am-1 pm) was first identified to determine the weekday hourly pattern, or AM/PM Peak-to-Midday Ratio (1).

(1) AM/PM Peak-to-Midday Ratio:
$$\frac{\sum_{M-F} (Vol_{7a-9a} + Vol_{4p-6p}) / 4}{\sum_{M-F} (Vol_{11a-1p}) / 2}$$

Day-of-week patterns were also identified by comparing the average daily weekday volume (M-F) to the average daily weekend volume (Sa-Su) (2).

(2) Weekday-to-Weekend Ratio:
$$\frac{\text{Average Weekday Daily Traffic}}{\text{Average Weekend Daily Traffic}}$$

These two measures taken together provide a good overall indication of whether the site is more closely associated with commute or non-commute travel patterns, or demonstrates characteristics of both. Ratio values above 1.1 indicate a commute pattern, while values below 0.9 indicate a non-commute pattern (including recreation and other non-commute trips). Values between 0.9 and 1.1 experience both types of traffic and are therefore considered to be ‘mixed.’

The combination of AM/PM peak-to-midday and weekday-to-weekend ratios was used to classify each site as having a “Commute”, “Non-Commute”, or “Mixed” travel pattern, based on the ranges shown in Table A-1. The criteria can also be used to assign SDCs into factor groups. CDOT may wish to review the appropriateness of these thresholds as additional data is collected and evaluated.

Table A-1. Factor Group Assignment Matrix

		WEEKDAY-TO-WEEKEND RATIO		
		< 0.9	0.9 - 1.1	> 1.1
AM/PM PEAK-TO-MIDDAY RATIO	< 0.9	Non-Commute	Mixed	Mixed
	0.9 - 1.1	Mixed	Mixed	Mixed
	> 1.1	Mixed	Mixed	Commute

Tables A-2 through A-4 summarize the factor group assignments for the 24 active PCMS by pedestrian, bicycle, and combined counts.