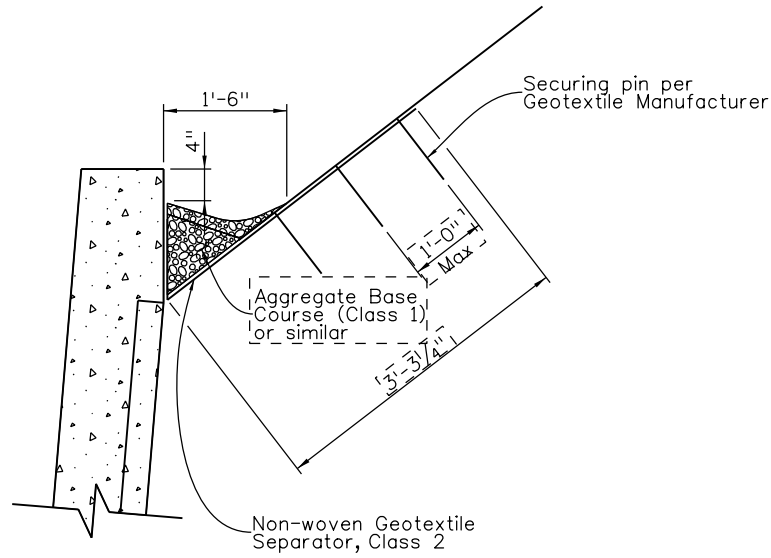
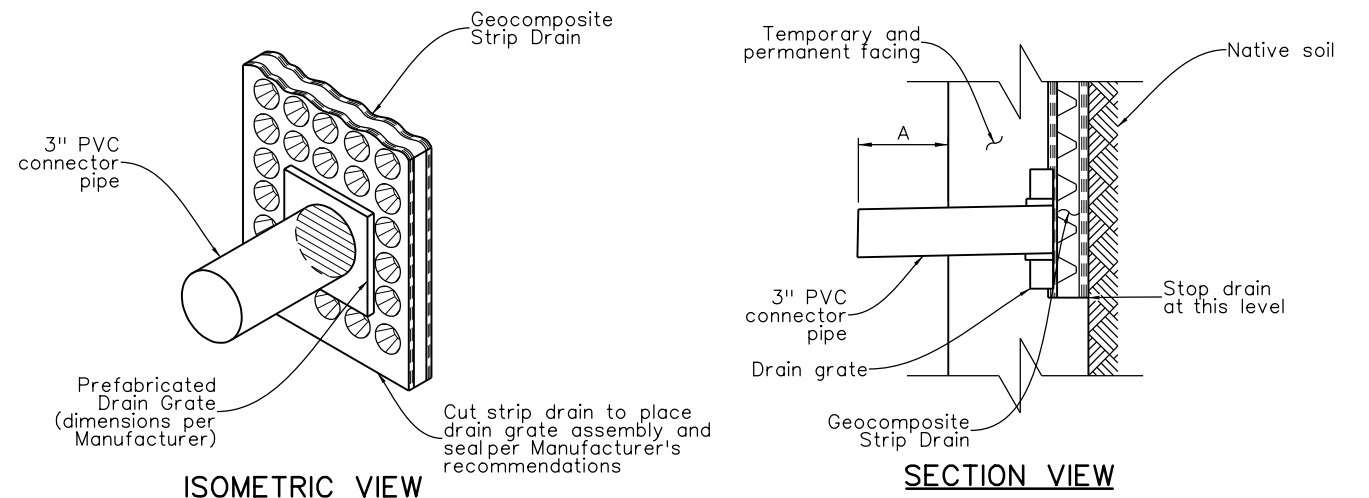


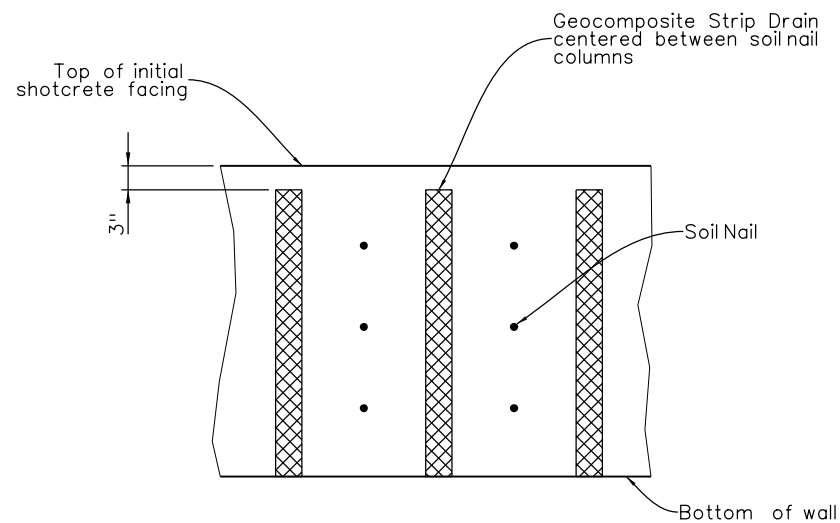
Note to Designer: Design of drainage pan to be provided by Hydraulics and reviewed by CDOT.



**DRAINAGE PAN DETAIL**



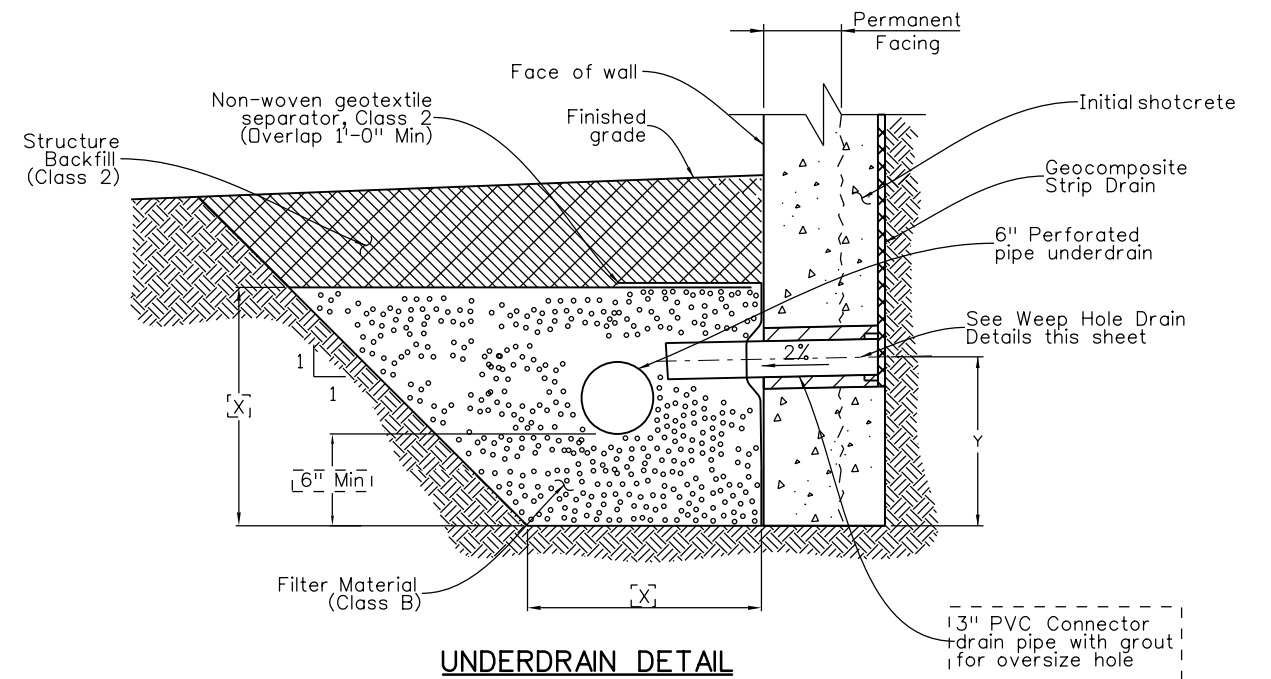
**WEEP HOLE DRAIN DETAILS**



**TYPICAL STRIP DRAIN DETAIL**

**NOTE:**  
Splices of the Strip Drains are made with a minimum of 12" overlap or per Manufacturer's specifications.

Note to Designer: Horizontal geocomposite strip drains may be considered on a project-specific basis.



**UNDERDRAIN DETAIL**

Alternate subsurface drainage details may be submitted for approval.

Note to Designer: Designer to determine pipe depths based on site grades and drainage requirements. This sheet presents one way of establishing sufficient drainage.

Revision Dates	(Preliminary Stage Only)
12/19	3/23

INITIALS	DESIGN	DATE	DETAIL	DATE	QUANTITY	DATE
By						
Checked By						

All seals for this set of drawings are applied to the cover page(s)

Print Date: \$DATE\$  
File Name: Sheet\_B-504-SN5.dgn  
Horiz. Scale: Not to Scale Vert. Scale: As Noted  
Unit Information Unit Leader Initials

Sheet Revisions		
Date:	Comments	Init.

Colorado Department of Transportation

2829 West Howard Place, 3rd Floor  
Denver, CO 80204  
Phone: 303-512-4079  
FAX: 303-757-9197

Staff Bridge Branch Initials

As Constructed
No Revisions:
Revised:
Void:

**SOIL NAIL DRAINAGE DETAILS**

Designer:	XXXXXXXX	Structure Numbers	X-XX-XX
Detailer:	XXXXXXXX	Structure Numbers	X-XX-XX
Sheet Subset:	WALL	Subset Sheets:	WXX of XXX

Project No./Code
Project Number
Code
Sheet Number