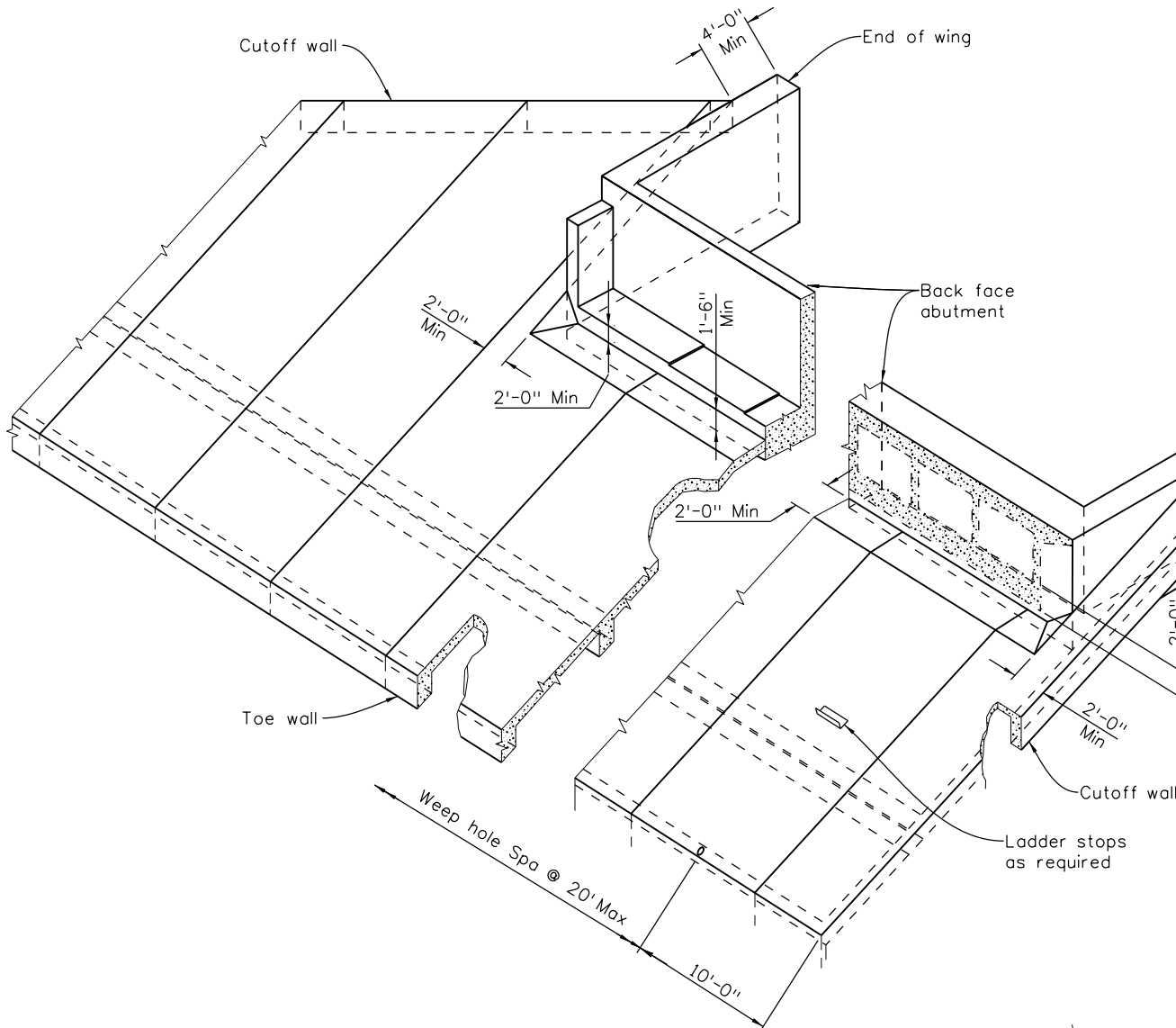


Revision Dates			
3/99	11/99	5/00	3/07
	4/02	10/13	9/24

INITIALS	DESIGN	DATE	DETAIL	DATE	QUANTITY	DATE
By						
Checked By						

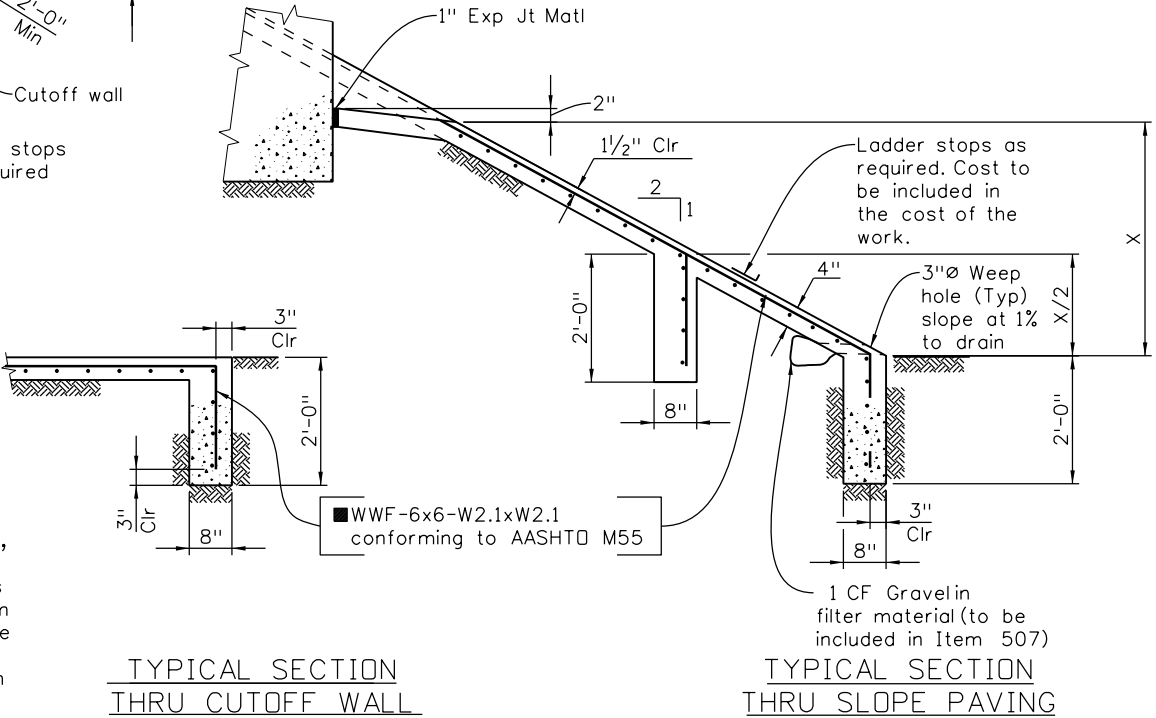


These drawings show general details only.
For limits of slope paving, see General Layout.

NOTES:

1. Slope paving shall be poured in 10-foot transverse sections with a tooled construction joint at each section. Wire fabric shall be 2" from the end of joints and shall lap 8" at splices.
2. Where slope or berm paving butts against structural concrete, separate with 1" expansion joint material.
3. Expansion joint material and welded wire fabric shall not be paid for separately, but shall be included in the work.
4. Structure excavation for concrete slope and ditch paving shall be limited to the actual volume occupied by the slope paving concrete.

- 4.0 Lb of Macro Fiber Reinforcement meeting ASTM C1116, per CY of concrete, may be substituted for the WWF in this slope paving. If this substitution is made, a continuous #5 reinforcing bar shall be added near the top and bottom of the cutoff wall. The fiber shall be added to the concrete mix in such a fashion that the fibers are uniformly dispersed in the concrete without visible balls or clumps in either the finished slope paving or in the plastic concrete delivered from the concrete truck.



All seals for this set of drawings are applied to the cover page(s)

Print Date: \$DATE\$
File Name: Sheet_B-507-1.dgn
Horiz. Scale: None Vert. Scale: As Noted
Unit Information Unit Leader Initials

Sheet Revisions		
Date:	Comments	Init.

Colorado Department of Transportation



2829 West Howard Place, 3rd Floor
Denver, CO 80204
Phone: 303-512-4079
FAX: 303-757-9197

Staff Bridge Branch

Initials

As Constructed		SLOPE PAVING DETAILS SINGLE SLOPE				Project No./Code
No Revisions:						Project Number
Revised:		Designer:	XXXXXXXX	Structure Numbers	X-XX-XX	Code
		Detailer:	XXXXXXXX		X-XX-XX	
Void:		Sheet Subset:	BRIDGE	Subset Sheets: BXX of XXX		Sheet Number