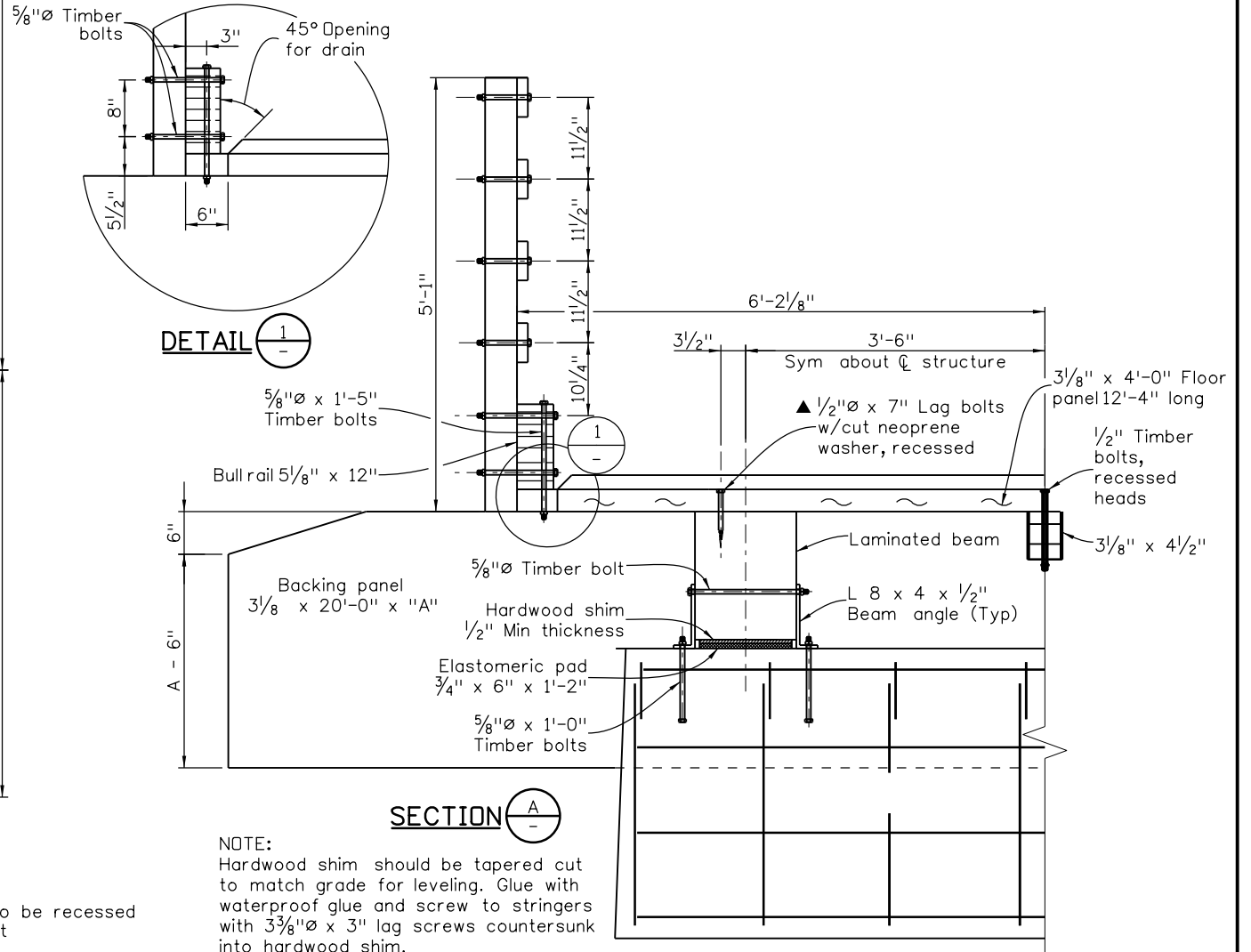
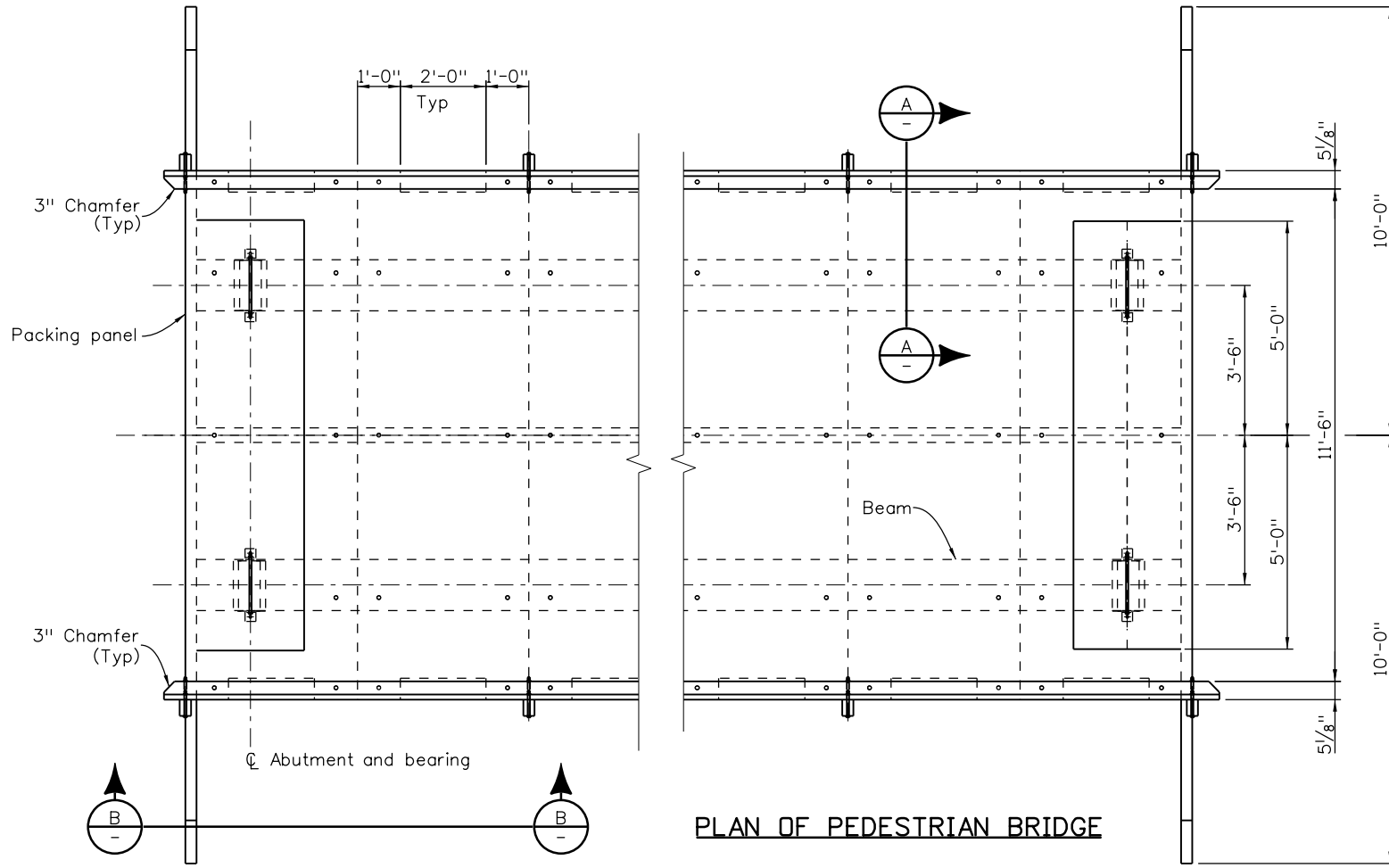
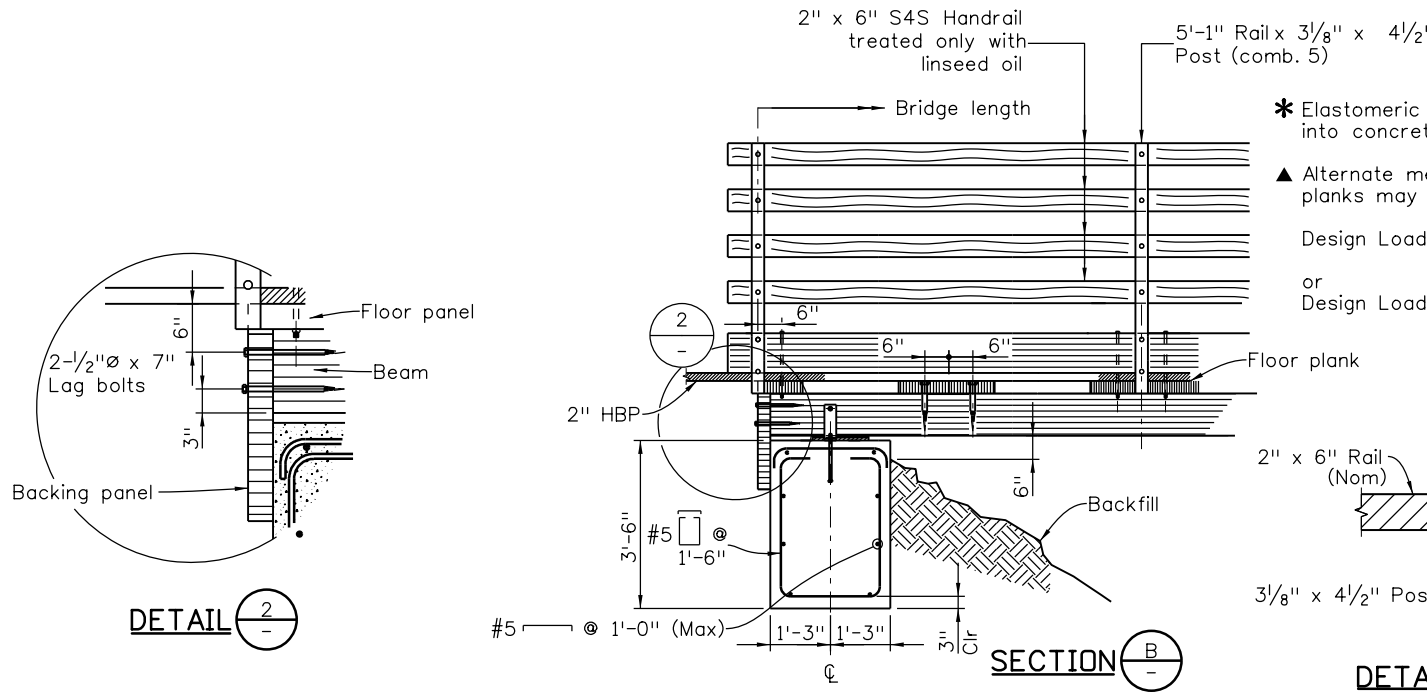


Revision Dates	(Preliminary Stage Only)
9/02	3/07
10/13	3/23

INITIALS	DESIGN	DATE	DETAIL	DATE	QUANTITY	DATE
By						
Checked By						



NOTE:
Hardwood shim should be tapered cut to match grade for leveling. Glue with waterproof glue and screw to stringers with 3 3/8" x 3" lag screws countersunk into hardwood shim.



* Elastomeric pad to be recessed into concrete seat
 ▲ Alternate methods of attaching floor planks may be submitted for approval
 Design Load = State legal truck at 133% of Design Stresses
 or
 Design Load = 135 PSF for Pedestrians and pavement at 100% of Design Stresses

BRIDGE LENGTH (Ft)	SPAN LENGTH (In)	BEAM DEPTH (In)	BEAM WIDTH (In)	BACKING PLANK "A" (Ft)	MAX FTG PRESSURE (TSF)
16	13	10 1/2	14 1/4	2	0.8
24	21	15	14 1/4	2	0.9
32	29	18	14 1/4	3	1.0
40	37	21	14 1/4	3	1.2
48	45	25 1/2	14 1/4	3	1.3
56	53	30	14 1/4	4	1.4
64	61	33	14 1/4	4	1.6
72	69	34 1/2	16 1/4	4	1.7
80	77	39	16 1/4	4	1.8
88	85	43 1/2	16 1/4	5	2.0
96	98	43 1/2	18 1/4	5	2.1
104	101	48	18 1/4	5	2.2

All seals for this set of drawings are applied to the cover page(s)

Print Date: \$DATE\$
 File Name: Sheet_B-508-PB.dgn
 Horiz. Scale: Not to Scale Vert. Scale: As Noted
 Unit Information Unit Leader Initials

Sheet Revisions		
Date:	Comments	Init.

Colorado Department of Transportation
 2829 West Howard Place, 3rd Floor
 Denver, CO 80204
 Phone: 303-512-4079
 FAX: 303-757-9197
Staff Bridge Branch

As Constructed
 No Revisions:
 Revised:
 Void:

TIMBER PEDESTRIAN BRIDGE DETAILS			
Designer:	XXXXXXXX	Structure Numbers	X-XX-XX
Detailer:	XXXXXXXX	Structure Numbers	X-XX-XX
Sheet Subset:	BRIDGE	Subset Sheets:	BXX of XXX

Project No./Code
 Project Number
 Code
 Sheet Number