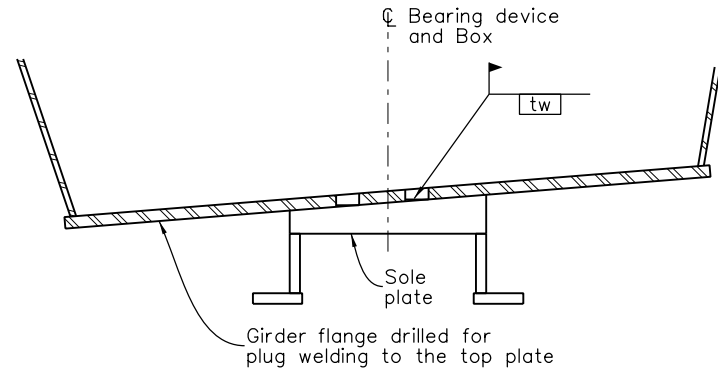
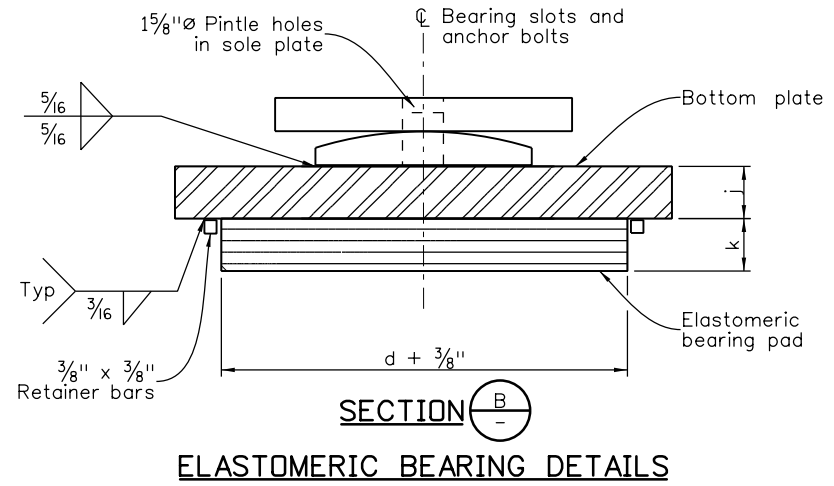
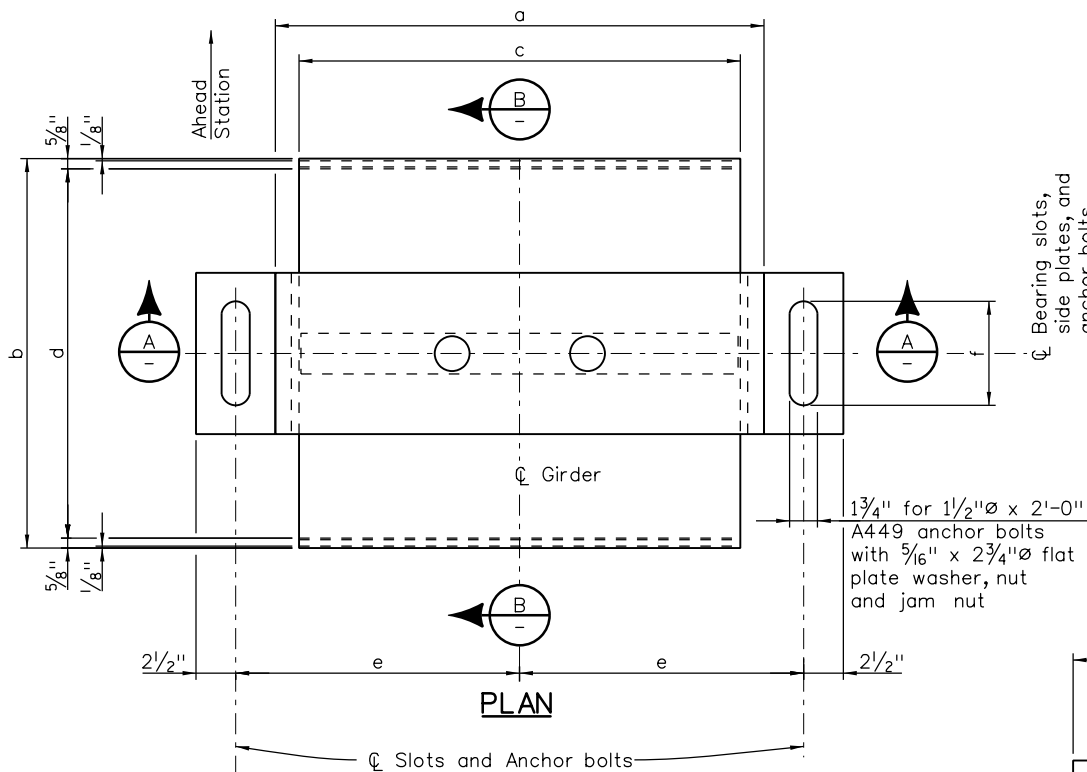
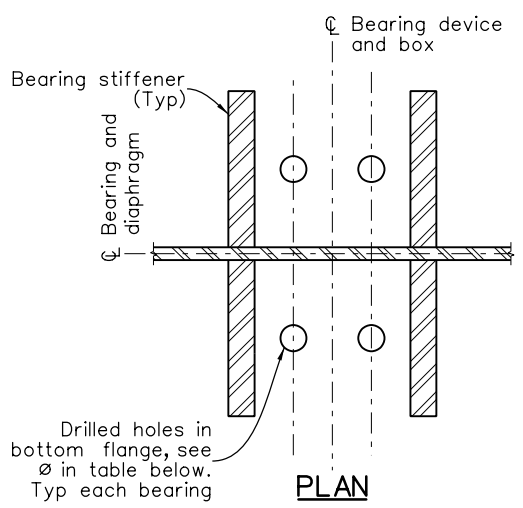
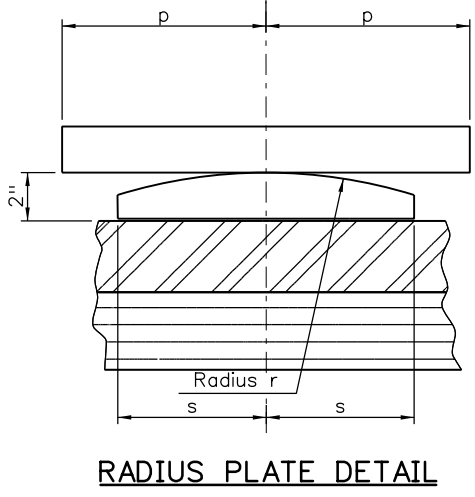


Revision Dates	(Preliminary Stage Only)	3/99	3/07	10/13	3/23
4/93	11/99	4/02	6/04	3/07	10/13

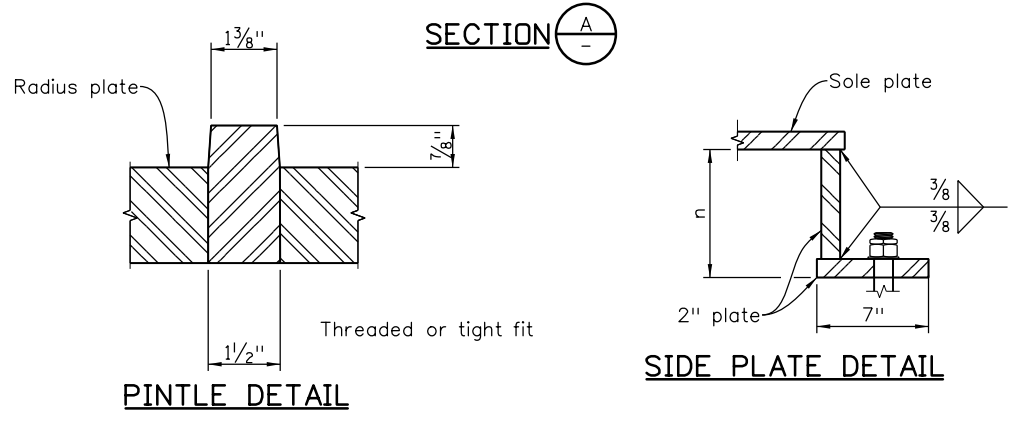
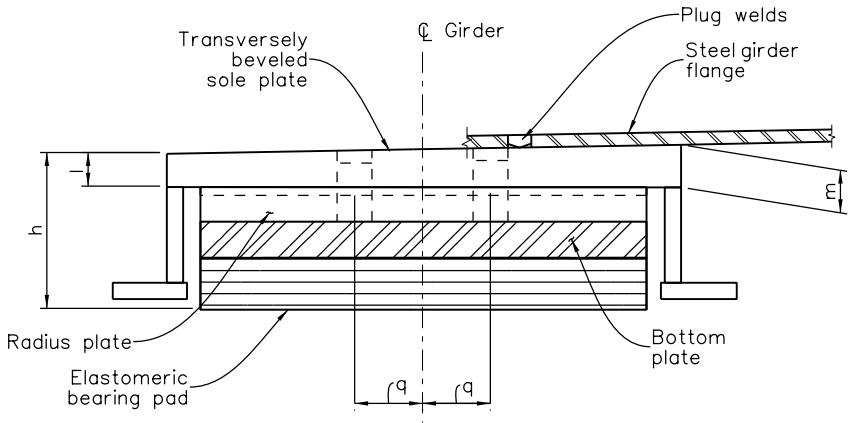


Bearing stiffener and diaphragm not shown

**TOP PLATE OF GIRDER CONNECTION (STEEL GIRDER)**



- NOTES:**
- At fixed bearings, anchor bolt nuts shall be snugged and jammed with jam nuts. At expansion bearings, provide 1/4" clearance between nut and side plate under all temperature conditions prior to jamming.
  - Do not paint steel surfaces in contact with elastomeric pad.
  - Elastomeric pad, sole plate, radius and bottom plate, side plates, pintle, anchor bolts, and miscellaneous hardware shall be included in the bid price for Item 512, Bearing Device (Type IV).
  - Grade 3 elastomer shall be used. Higher grade elastomer may be substituted for grade 3 at no additional cost to the project.
  - Design shear modulus G = \_\_\_\_\_ psi at 73°F.
  - Hardness = \_\_\_\_\_ Duro (Shore A).
  - AASHTO design method \_\_\_\_\_ has been used.



Location	No. Req'd	Maximum Design Load (Kip)	Top Connections Field Plug Welds (Steel Structure)			Dimensions (Inches)																		
			Number	ø (In)	tw	a	b	c	d	e	f	h	j	k	l	m	n	p	q	r	s			

INITIALS	DESIGN	DATE	DETAIL	DATE	QUANTITY	DATE
By						
Checked By						

All seals for this set of drawings are applied to the cover page(s)

Print Date: \$DATE\$  
 File Name: Sheet\_B-512-4S.dgn  
 Horiz. Scale: Not to Scale Vert. Scale: As Noted  
 Unit Information      Unit Leader Initials

Sheet Revisions		
Date:	Comments	Init.

Colorado Department of Transportation  
 2829 West Howard Place, 3rd Floor  
 Denver, CO 80204  
 Phone: 303-512-4079  
 FAX: 303-757-9197  
**Staff Bridge Branch**

As Constructed	
No Revisions:	
Revised:	
Void:	

**BEARING DEVICE (TYPE IV) STEEL GIRDER**

Designer: XXXXXXXX	Structure Numbers: X-XX-XX
Detailer: XXXXXXXX	
Sheet Subset: BRIDGE	Subset Sheets: BXX of XXX

Project No./Code	
Project Number	
Code	
Sheet Number	