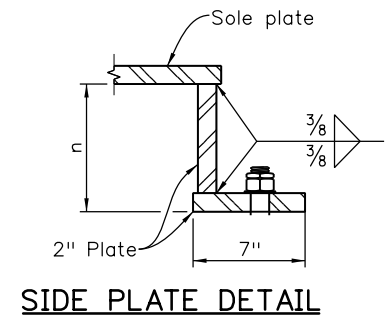
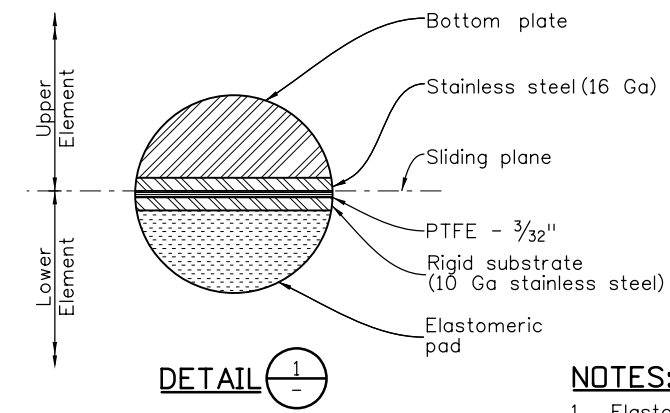
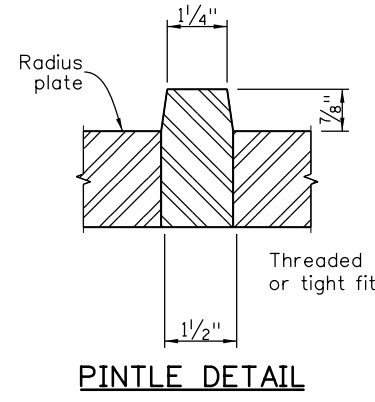
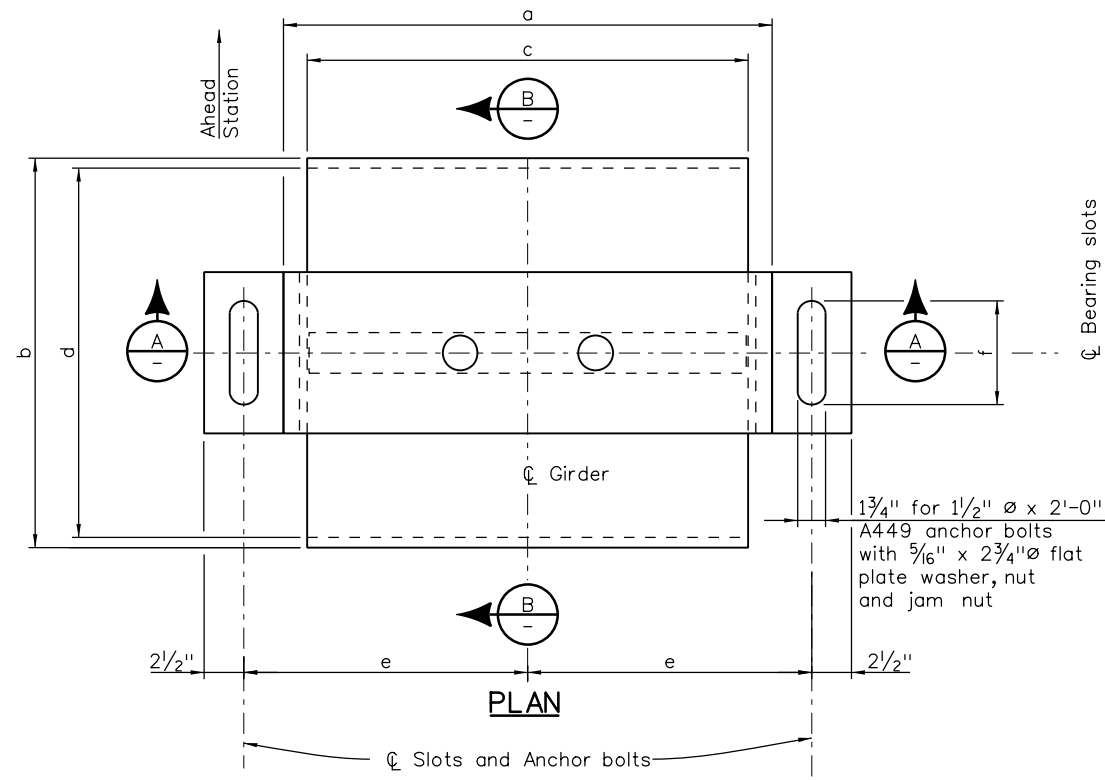
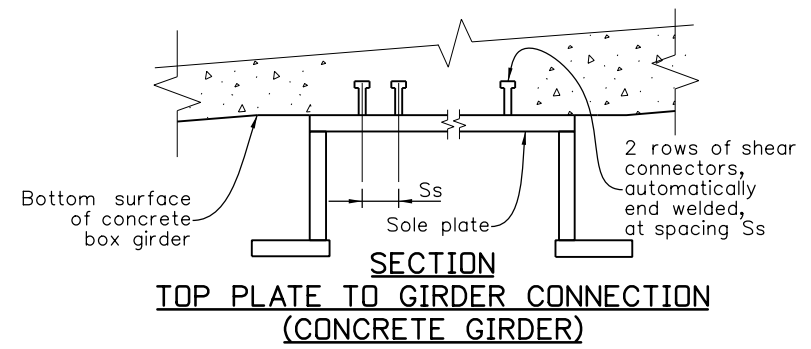
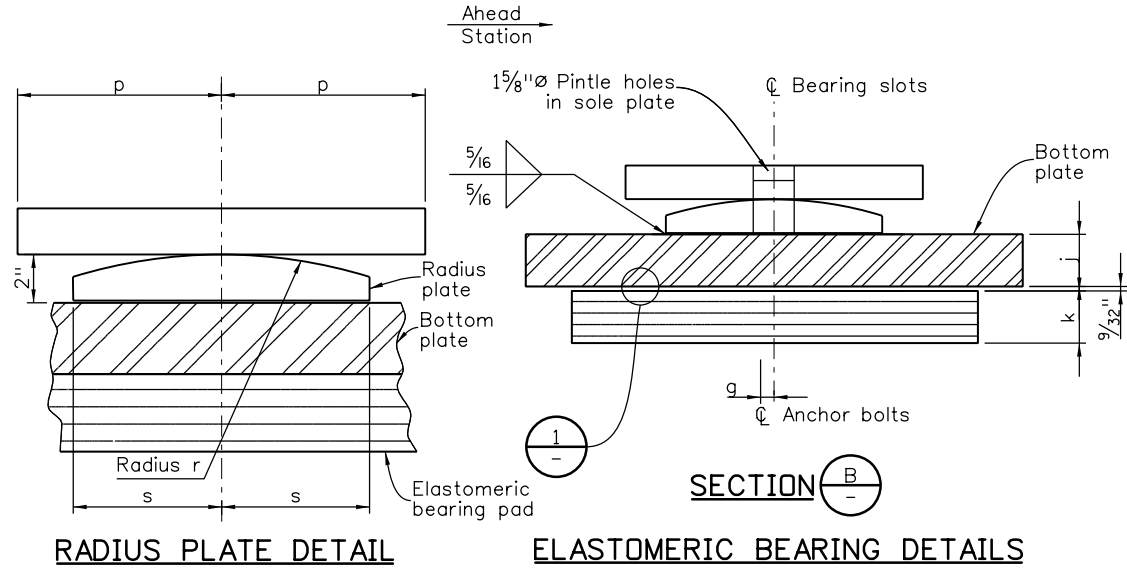
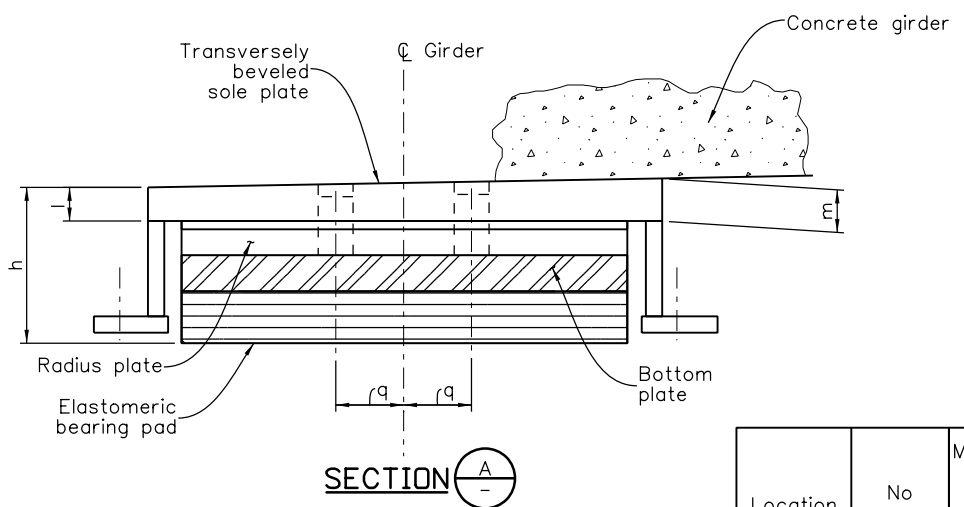


Revision Dates	(Preliminary Stage Only)					
8/92	4/93	3/99	11/99	4/02	3/07	10/13
3/23						



- NOTES:**
- Elastomeric pad, sole plate, radius and bottom plate, PTFE, side plates, pintle, shear studs, welding, anchor bolts, and miscellaneous hardware shall be included in the bid price for item 512, Bearing Device (Type V).
 - The centerlines of the upper and lower elements of the expansion bearings shall be aligned as shown in section B at a mid-point temperature of 40°. The upper element only shall be adjusted in relation to the fixed bearing for each 10° temperature change. Adjust away from the fixed bearing one 10° temperature increment for each 10° change above 40° and toward the fixed bearing for each 10° change below 40°.
 - Provide 1/4" clearance between jam nut and sole plate under all temperature conditions prior to jamming.
 - Seal weld stainless steel to the sole plate.
 - PTFE and substrate shall be vulcanized to the elastomeric pad.
 - Grade 3 elastomer shall be used. Higher grade elastomer may be substituted for grade 3 at no additional cost to the project.
 - Design shear modulus G = _____ psi at 73°F.
 - Hardness = _____ Duro (Shore A).
 - AASHTO design method _____ has been used.



Location	No Req'd	Maximum Design Load (Kip)	Top Connections Concrete Anchor Studs			10° Temp Increments	Dimensions (Inches)																	
			Length	Number	Ss (In)		ø (In)	a	b	c	d	e	f	g*	h	j	k	l	m	n	p	q	r	s

* NOTE: Dimension g compensates for creep and shrinkage. Negative values indicate that the * bearing slots shall be set backstation from the * anchor bolts and elastomeric pad.

INITIALS	DESIGN	DATE	DETAIL	DATE	QUANTITY	DATE
By						
Checked By						

All seals for this set of drawings are applied to the cover page(s)	Print Date: \$DATE\$	Sheet Revisions			Colorado Department of Transportation		As Constructed		BEARING DEVICE (TYPE V) CONCRETE GIRDER				Project No./Code	
	File Name: Sheet_B-512-5C.dgn	Date:	Comments	Init.	2829 West Howard Place, 3rd Floor Denver, CO 80204 Phone: 303-512-4079 FAX: 303-757-9197		No Revisions:		Designer: XXXXXXXX		Structure Numbers: X-XX-XX		Project Number	
	Horiz. Scale: Not to Scale Vert. Scale: As Noted				Staff Bridge Branch		Revised:		Detailer: XXXXXXXX		X-XX-XX		Code	
	Unit Information Unit Leader Initials				Initials		Void:		Sheet Subset: BRIDGE		Subset Sheets: BXX of XXX		Sheet Number	