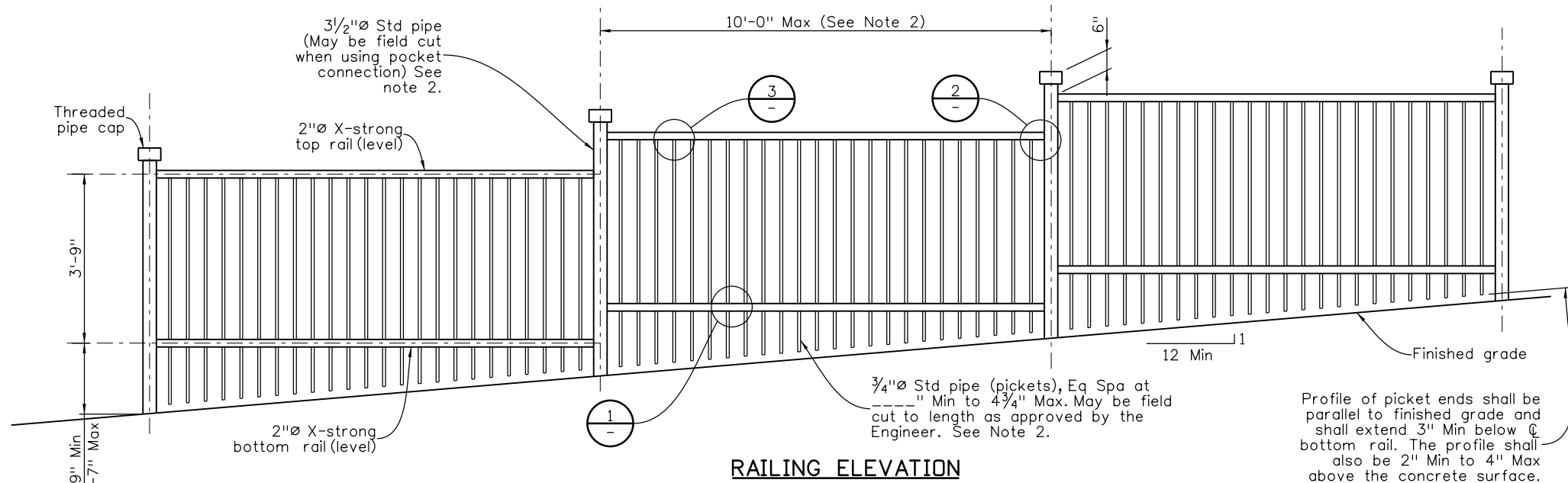


Revision Dates	(Preliminary Stage Only)
4/02	3/07
10/13	3/23

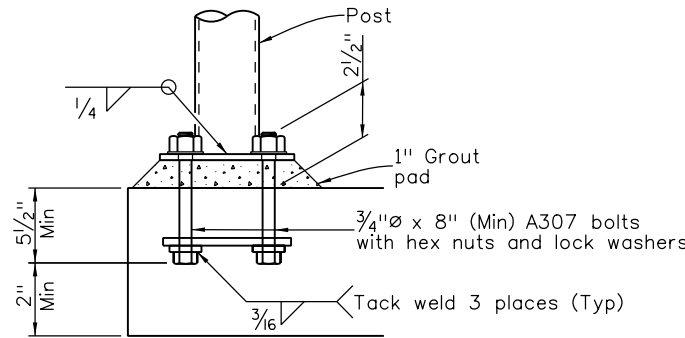
INITIALS	DESIGN	DATE	DETAIL	DATE	QUANTITY	DATE
By						
Checked By						



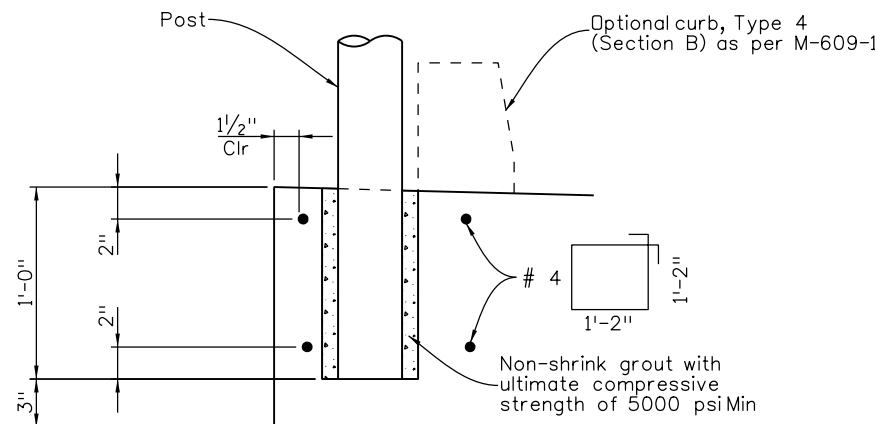
RAILING ELEVATION

NOTES:

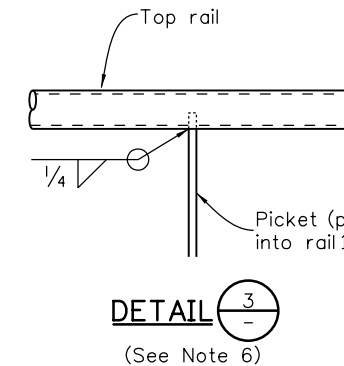
- All railing panels shall be shop fabricated.
- Seal picket ends with threaded pipe caps when not installed next to a curb. Field-cut ends, without pipe caps, shall be ground smooth to preclude personal injury to the general public.
- All pipe shall meet the requirements in ASTM A53 for Grade B steel and all plates and bars shall meet the requirements in AASHTO M270 for Grade 36 steel.
- Concrete (Class D) shall be used to support rail posts.
- Posts shall be installed in a properly reinforced slab.
- Holes in rails, for pickets, and holes in posts, for pins, shall be drilled.
- Railing components shall be galvanized in accordance with Sect 509.11 or duplex coated.
- Railing will be paid for, by the linear foot, as Item 514 Pipe Railing.
- Railing accommodates pedestrians and bicycles in accordance with LRFD Bridge Specifications.



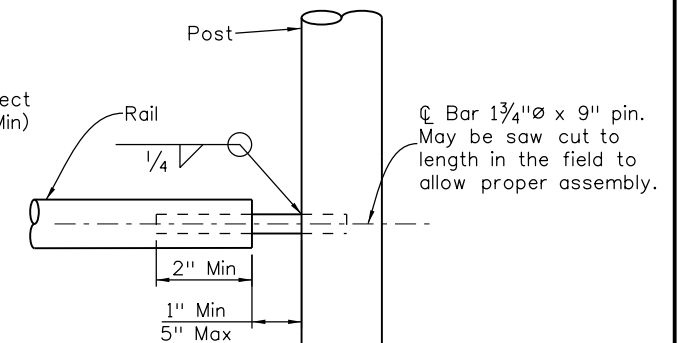
ELEVATION



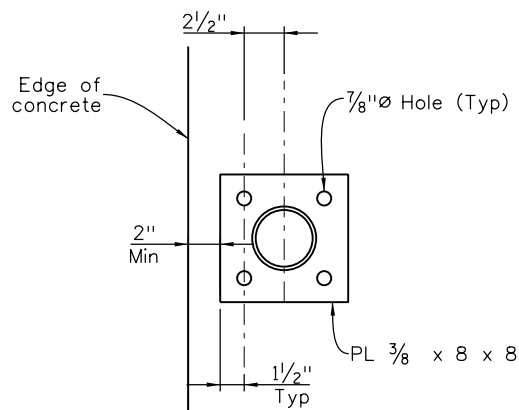
ELEVATION



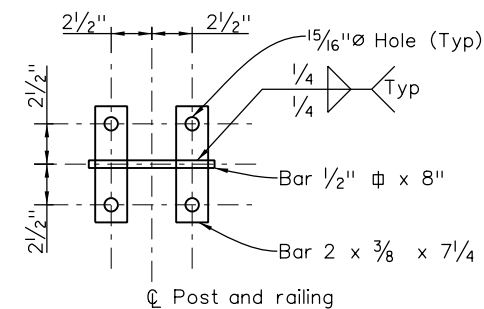
DETAIL 3
(See Note 6)



DETAIL 2
(See Note 6)

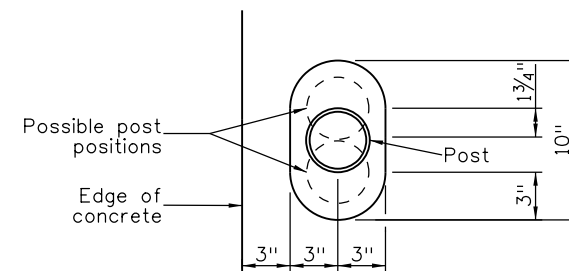


PLAN



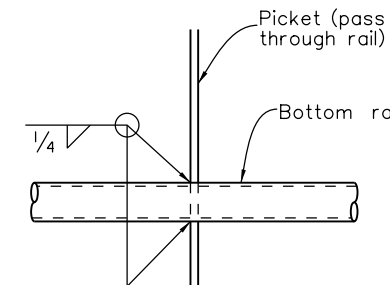
ANCHORAGE DETAIL

BOLTED CONNECTION



PLAN

POCKET CONNECTION



DETAIL 1
(See Note 6)

SUMMARY OF APPROXIMATE QUANTITIES

(For Information Only)

ITEM NO	DESCRIPTION	Unit	WITH BASE PL	WITH POST POCKET
509	Structural Steel (Galvanized)	Lb/Ft	30.6	29.9
602	Reinforcing Steel (Epoxy Coated)	Lb/Ft		0.7

All seals for this set of drawings are applied to the cover page(s)

Print Date: \$DATE\$
 File Name: Sheet_B-514-PR.dgn
 Horiz. Scale: Not to Scale Vert. Scale: As Noted
 Unit Information Unit Leader Initials

Sheet Revisions		
Date:	Comments	Init.

Colorado Department of Transportation
 2829 West Howard Place, 3rd Floor
 Denver, CO 80204
 Phone: 303-512-4079
 FAX: 303-757-9197
Staff Bridge Branch

As Constructed
 No Revisions:
 Revised:
 Void:

PIPE RAILING			
Designer:	XXXXXXXX	Structure Numbers	X-XX-XX
Detailer:	XXXXXXXX	Structure Numbers	X-XX-XX
Sheet Subset:	BRIDGE	Subset Sheets:	BXX of XXX

Project No./Code
 Project Number
 Code
 Sheet Number

Initials