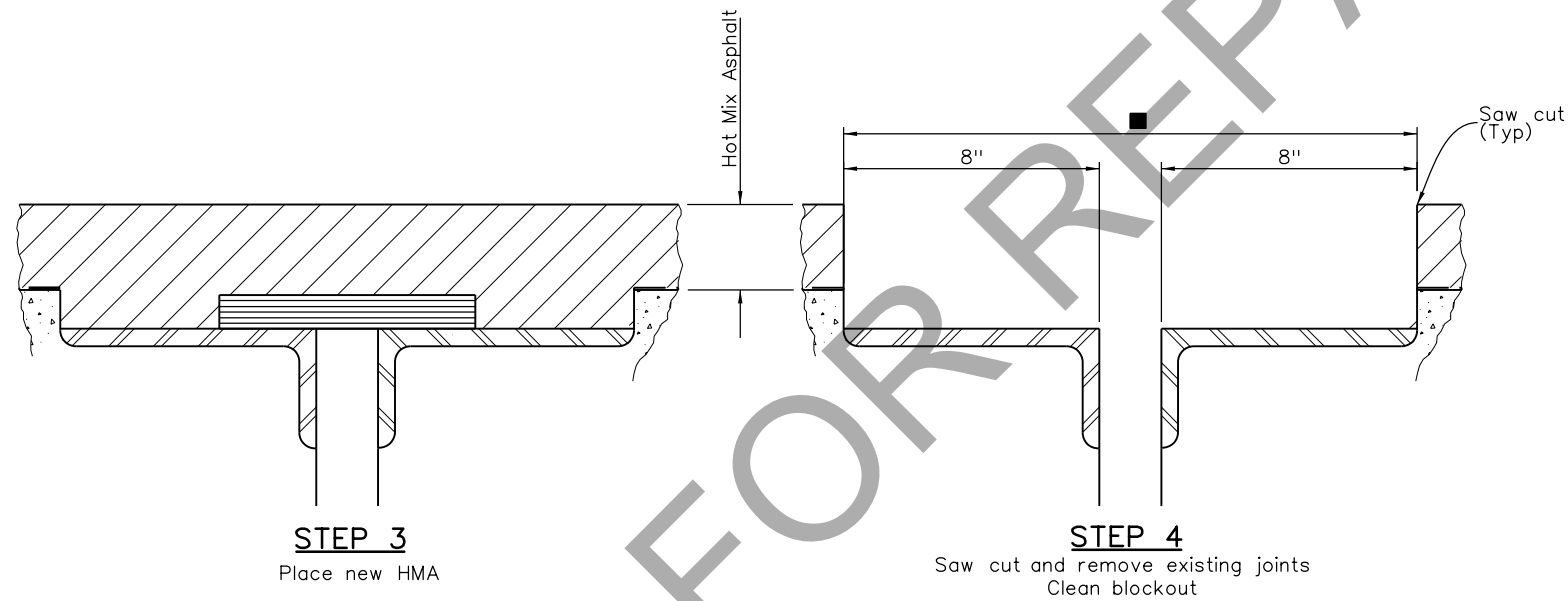
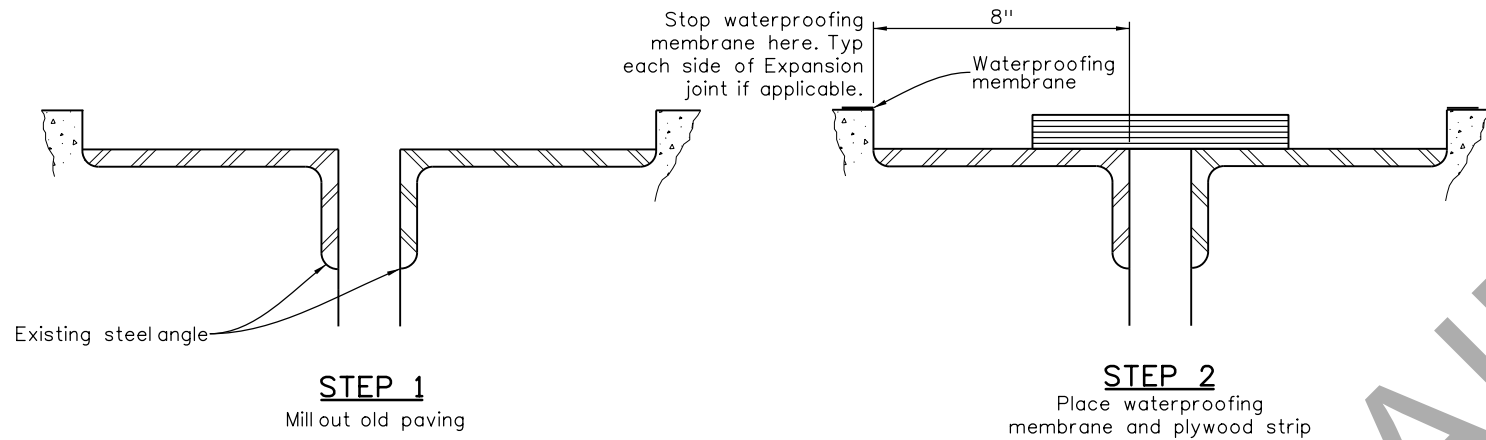


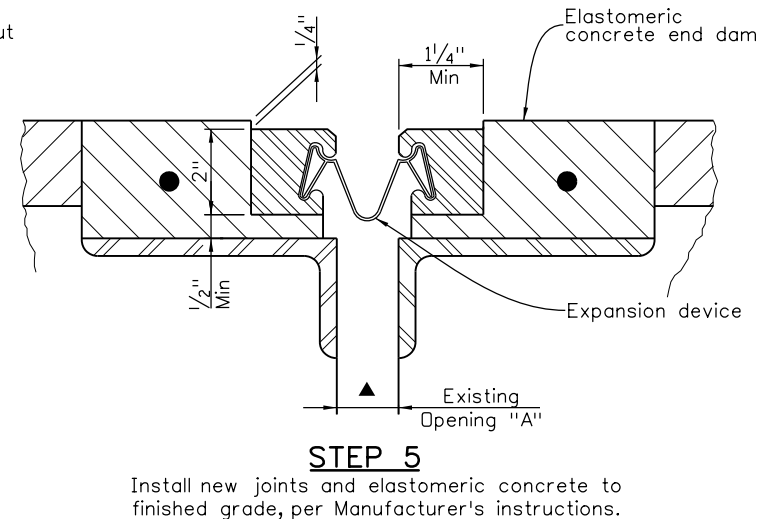
Detailer:  
 This is a schematic drawing only.  
 Show actual complete device. Specify portions to be removed. Make all views match actual situation. Determine XX and YY and fix the ▲ note accordingly. The gap shall never be smaller than 1" under extreme temperature conditions.

|                |                          |       |
|----------------|--------------------------|-------|
| Revision Dates | (Preliminary Stage Only) | 3/23  |
| 8/94           | 3/99                     | 11/99 |
| 5/01           | 4/02                     | 3/07  |
| 5/13           |                          |       |

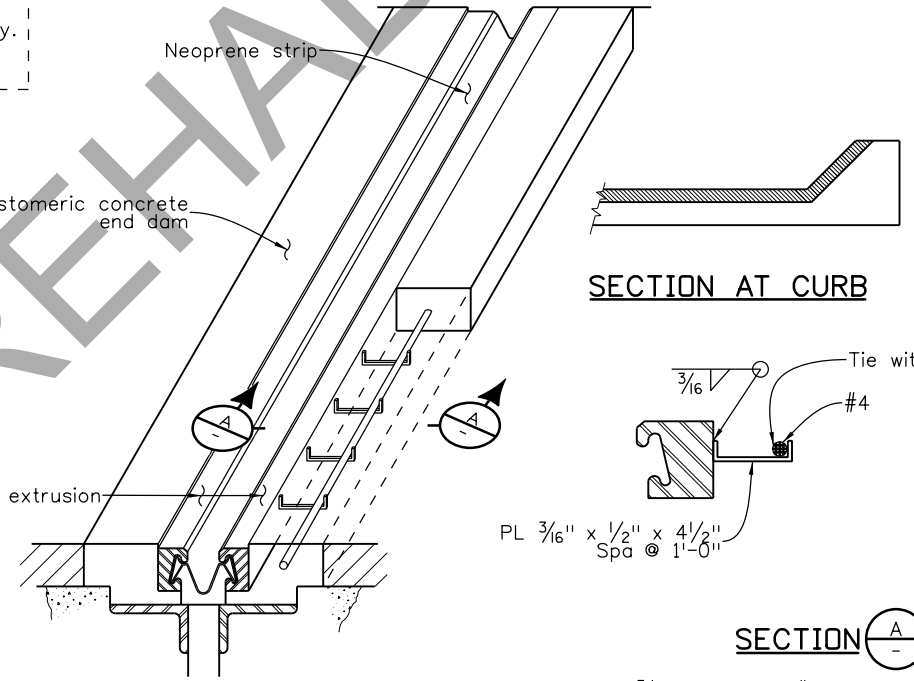
|            |        |      |        |      |          |      |
|------------|--------|------|--------|------|----------|------|
| INITIALS   | DESIGN | DATE | DETAIL | DATE | QUANTITY | DATE |
| By         |        |      |        |      |          |      |
| Checked By |        |      |        |      |          |      |



■ After saw cut, remove HMA and plywood in this area and sandblast exposed surfaces. Remove all loose particles before placing Expansion device and Elastomeric concrete end dam.



▲ Minimum opening = XX inches at 60°F ambient temperature. Adjust YY inches per 10° of temperature change.



3/16" Plate and #4 reinforcing bar are to be included in the cost of the expansion device and shown on the shop drawings.  
 If applicable, special field weld details to handle stage construction shall be shown on the expansion device shop drawings.

Acceptable Alternates:  
 WABD SE400-A with WABOCrete  
 D.S. Brown A2R400-SSA2 with Delcrete  
 Epoxy Industries S400-A with CEVACrete

| Str No | Dimension "A" |           |
|--------|---------------|-----------|
|        | Abut 1        | Last Abut |
|        |               |           |
|        |               |           |

|   |  |                 |          |       |   |  |                |  |  |  |                           |                  |                |  |
|---|--|-----------------|----------|-------|---|--|----------------|--|--|--|---------------------------|------------------|----------------|--|
| All seals for this set of drawings are applied to the cover page(s) | Print Date: \$DATE\$                             | Sheet Revisions |          |       | Colorado Department of Transportation   |  | As Constructed |  | BRIDGE EXPANSION DEVICE (0-4 INCH) REPLACEMENT |  |                           | Project No./Code |                |  |
|   | File Name: Sheet_B-518-1R.dgn                    | Date:           | Comments | Init. | 2829 West Howard Place, 3rd Floor<br>Denver, CO 80204<br>Phone: 303-512-4079<br>FAX: 303-757-9197 |  | No Revisions:  |  | Designer: XXXXXXXX                             |  | Structure X-XX-XX         |                  | Project Number |  |
|   | Horiz. Scale: Not to Scale Vert. Scale: As Noted |                 |          |       |   |  | Revised:       |  | Detailer: XXXXXXXX                             |  | Structure Numbers X-XX-XX |                  | Code           |  |
|   | Unit Information Unit Leader Initials            |                 |          |       |   |  | Void:          |  | Sheet Subset: BRIDGE                           |  | Subset Sheets: BXX of XXX |                  | Sheet Number   |  |

Staff Bridge Branch Initials