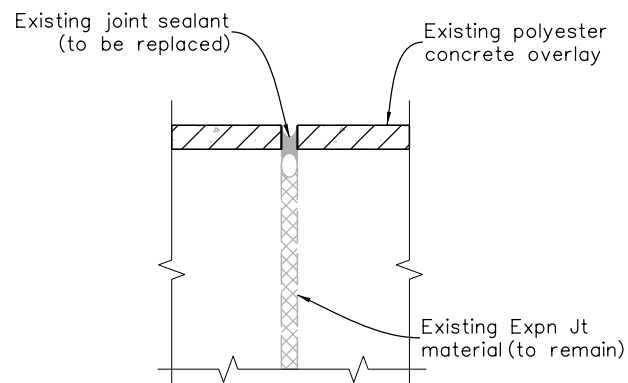
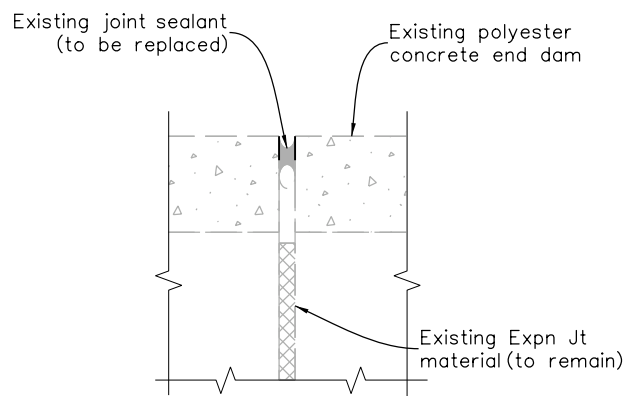


Revision Dates	(Preliminary Stage Only)
3/22	3/23

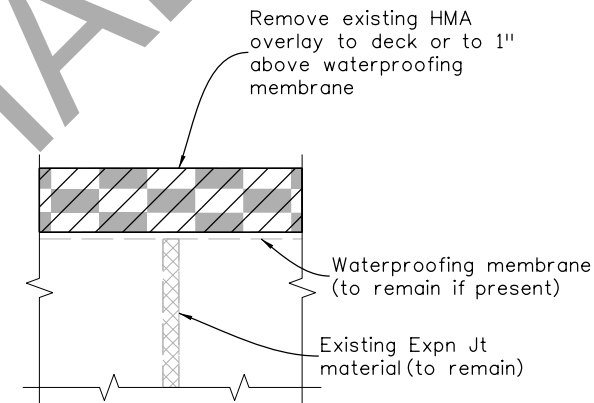
INITIALS	DESIGN	DATE	DETAIL	DATE	QUANTITY	DATE
By						
Checked By						



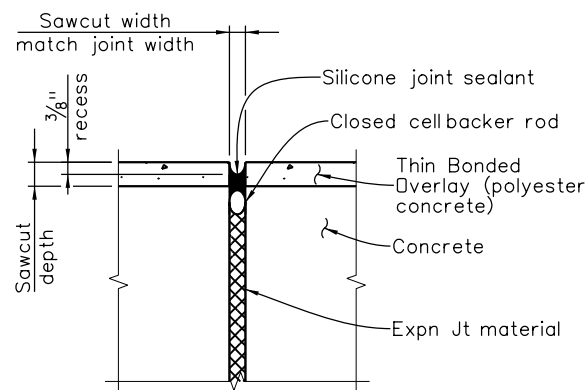
**THIN BONDED OVERLAY
(POLYESTER CONCRETE)
EXISTING**



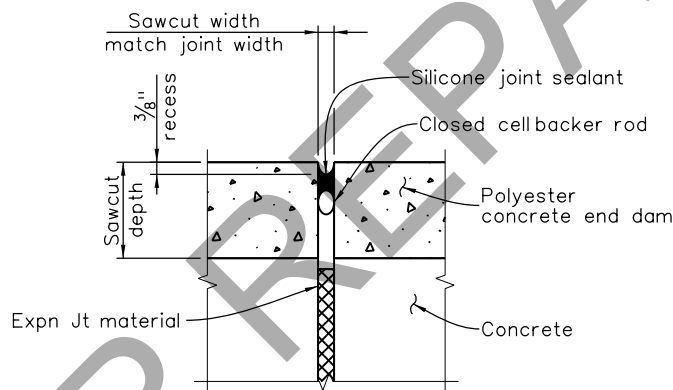
**POLYESTER CONCRETE
END DAM
EXISTING**



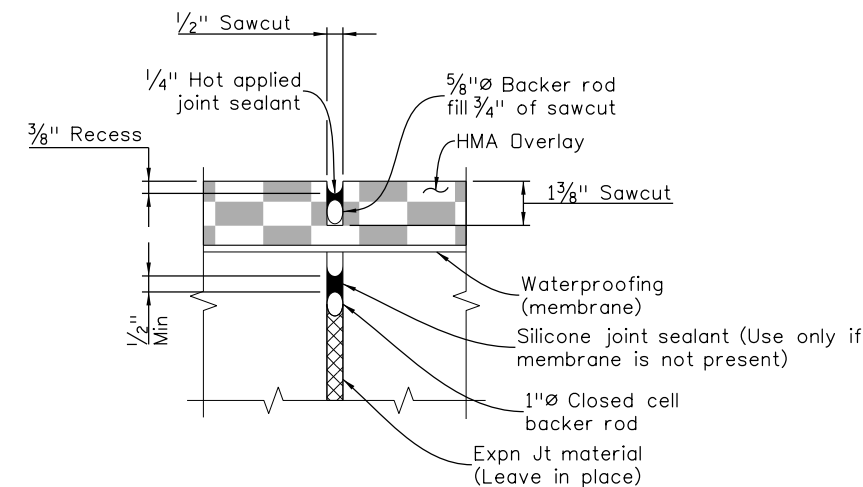
**HOT MIX ASPHALT
OVERLAY
EXISTING**



**THIN BONDED OVERLAY
(POLYESTER CONCRETE)
PROPOSED**



**POLYESTER CONCRETE
END DAM
PROPOSED**



**HOT MIX ASPHALT
OVERLAY
PROPOSED**

Designer/Detailer:
 Select one of the details, as appropriate.
 For the HMA overlay, verify if a waterproofing membrane exists. If one exists and is not anticipated to be replaced, leave 1" of asphalt and add note to not damage existing membrane.
 HMA overlays shall use hot applied sealants, concrete and polyester overlays shall use silicone sealants.
 Include the 518 Sawing and Sealing Bridge Joint Project Special if using this detail.

LEGEND
 Removal limits

- NOTES**
- Saw cut full depth of polyester concrete as soon as the material has cured enough to walk on.
 - Extend sawcut and sealant 6" up face of bridge rail.
 - Backer rod, sealant, and saw cut shall not be paid separately, but shall be included in Pay Item 518 Sawing and Sealing Bridge Joint.

All seals for this set of drawings are applied to the cover page(s)	Print Date: \$DATE\$	Sheet Revisions			Colorado Department of Transportation		As Constructed		SAWING AND SEALING BRIDGE JOINT		Project No./Code		
	File Name: Sheet_B-518-SSR.dgn	Date:	Comments	Init.	2829 West Howard Place, 3rd Floor Denver, CO 80204 Phone: 303-512-4079 FAX: 303-757-9197		No Revisions:		Project Number		Project Number		
	Horiz. Scale: Not to Scale Vert. Scale: As Noted						Revised:		Designer: XXXXXXXX	Structure Numbers	X-XX-XX	Code	
	Unit Information Unit Leader Initials						Void:		Detailer: XXXXXXXX	Subset Sheets: BXX of XXX	Sheet Number		
					Staff Bridge Branch		Initials						