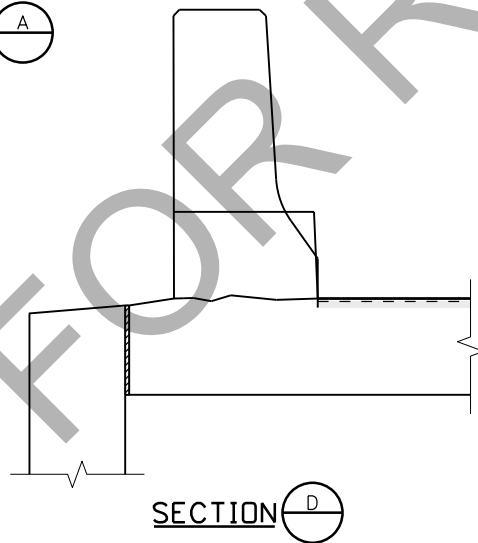
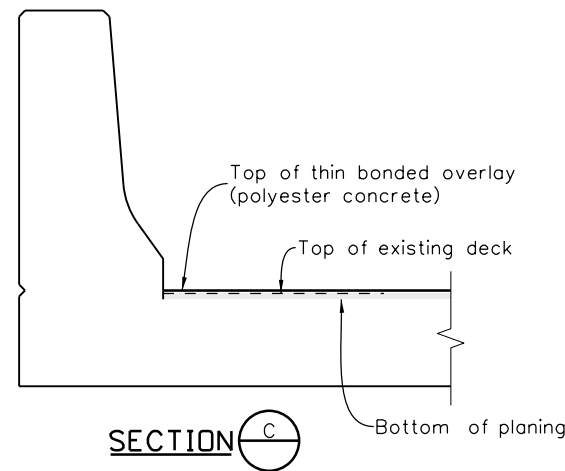
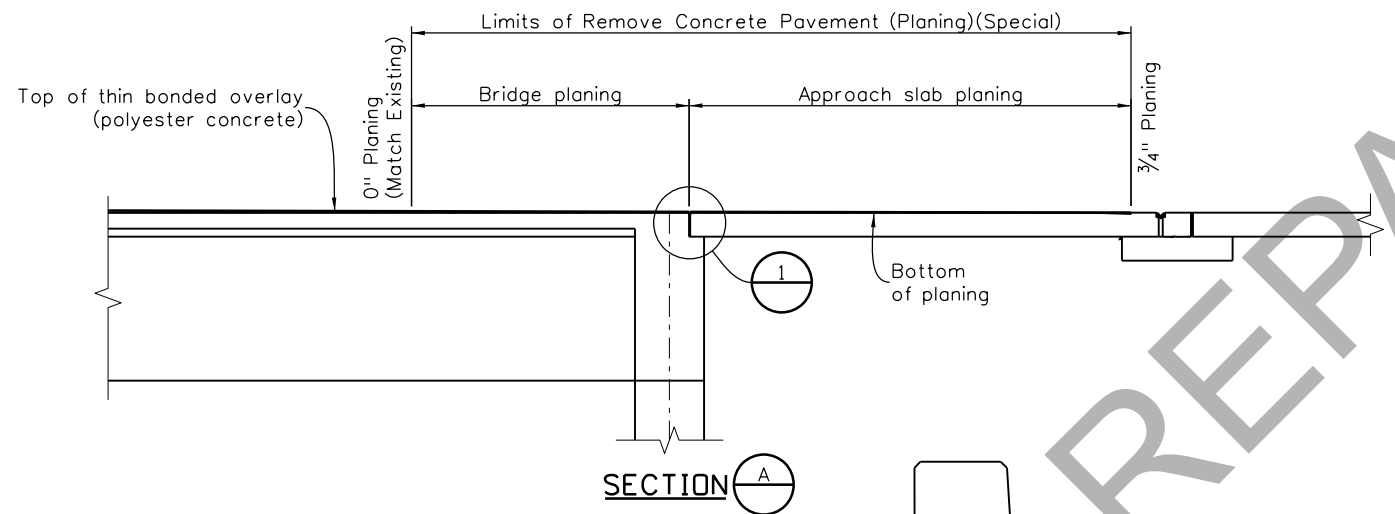
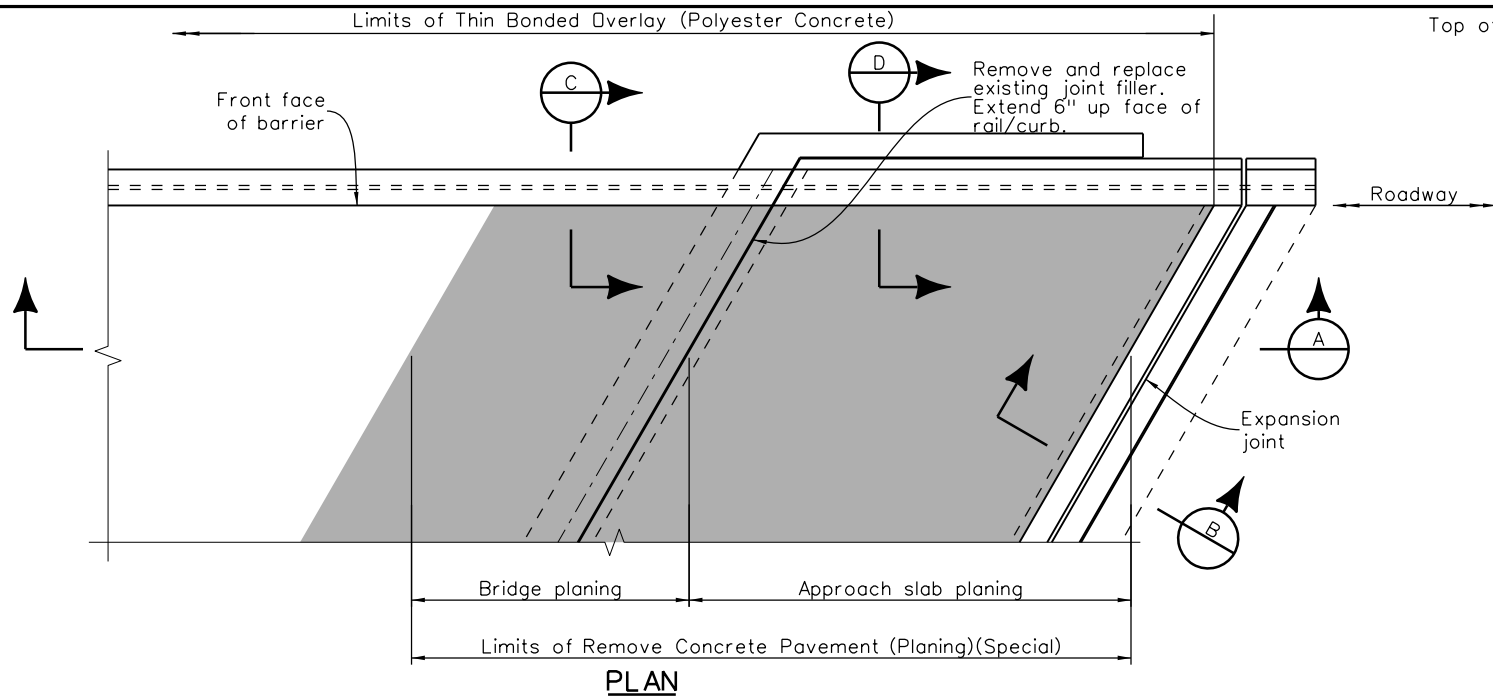


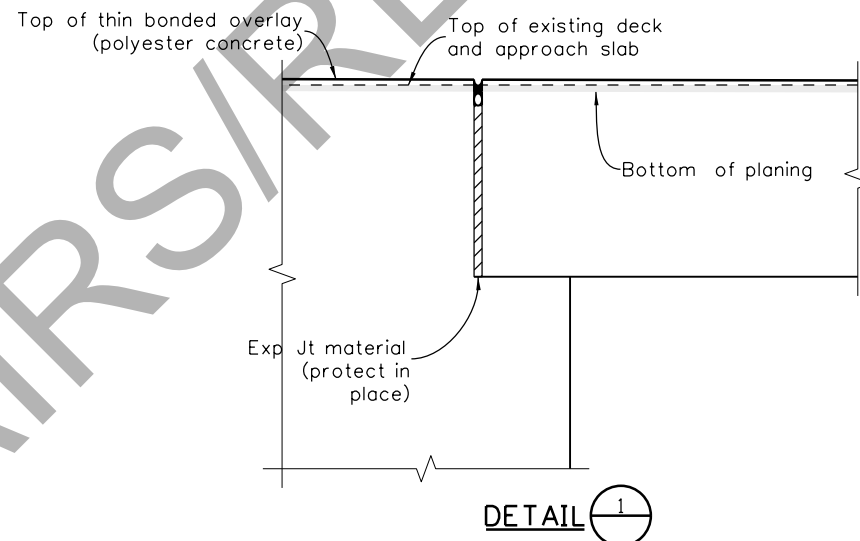
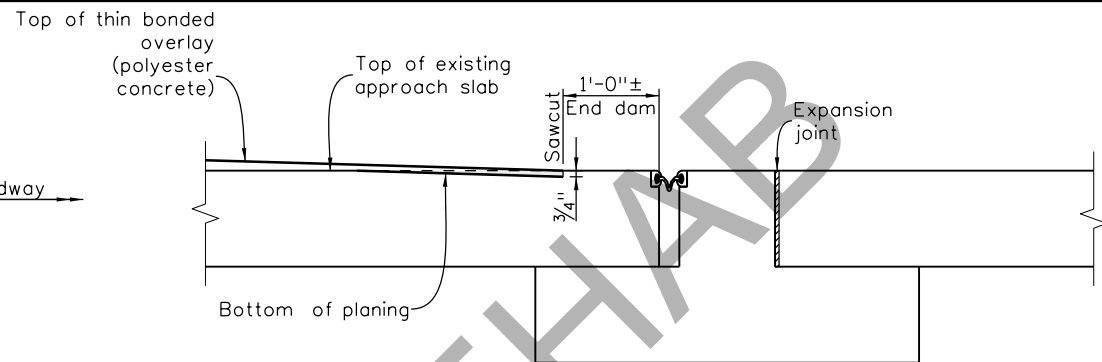
Revision Dates			
3/22	3/23	9/ 24	

INITIALS	DESIGN	DATE	DETAIL	DATE	QUANTITY	DATE
By						
Checked By						

\$PLOT_INFO\$



**** STRUCTURES**
X-XX-X



Note to Designer:
Redraw abutment detail to match existing conditions. Add additional joint filler locations if necessary based on existing conditions.

Note to Designer:
The designer should consider the following depending on the following existing conditions:

End of existing approach slab in good condition and there is an existing strip seal expansion device: Start the taper and overlay at the proposed 1-foot end dam shown.

End of existing approach slab in bad condition and there is an existing strip seal expansion device: Consider removing the deteriorated end of approach slab to the expansion device and replacing with a polyester concrete end dam.

End of existing approach slab in good condition and there is no existing strip seal expansion device: Start the taper and overlay at the end of approach slab.

End of existing approach slab in bad condition and there is no existing strip seal expansion device: Start the taper and overlay at the end of approach slab, remove end of approach slab to sound concrete, and consider using a thickened polyester concrete end dam.

NOTES

- Do not install Joint Filler above 90°F or below 50°F. Joint filler used shall be on the CDOT approved product list.
- 30-foot planing tapers are based on a 3/4" overlay and a maximum 0.2% grade break along the existing profile.
- Planing length on bridge and approach slab varies per bridge, see General Layout Sheets.
- Planing equipment shall be capable of planing to the required depth flush with the face of curb or barrier.
- Contractor shall sawcut through Thin Bonded Overlay (Polyester Concrete) at joint at BF Abutment as soon as the overlay has set enough to walk on.

All seals for this set of drawings are applied to the cover page(s)	Print Date: \$DATE\$	Sheet Revisions			Colorado Department of Transportation		As Constructed		THIN BONDED OVERLAY (POLYESTER CONCRETE)		Project No./Code	
	File Name: Sheet_B-519-1AR.dgn	Date:	Comments	Init.	 2829 West Howard Place, 3rd Floor Denver, CO 80204 Phone: 303-512-4079 FAX: 303-757-9197 Staff Bridge Branch		No Revisions:		(1 OF 2)		Project Number	
	Horiz. Scale: None Vert. Scale: As Noted						Revised:	Designer: XXXXXXXX	Structure Numbers	X-XX-XX	Code	Sheet Number
	Unit Information Unit Leader Initials											
							Void:	Detailer: XXXXXXXX	Sheet Subset: BRIDGE	Subset Sheets: BXX of XXX		