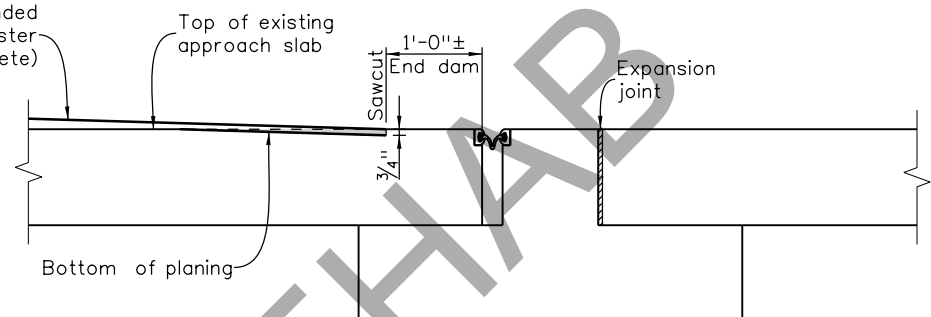
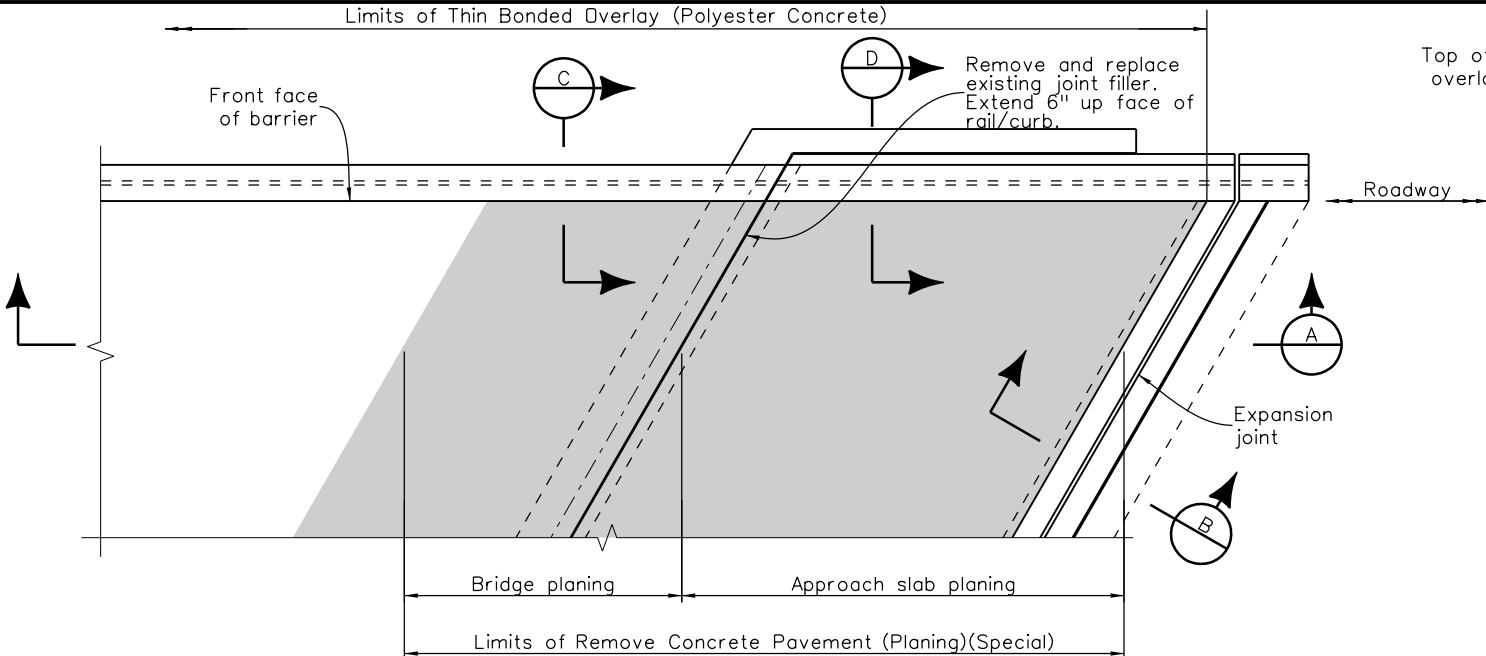
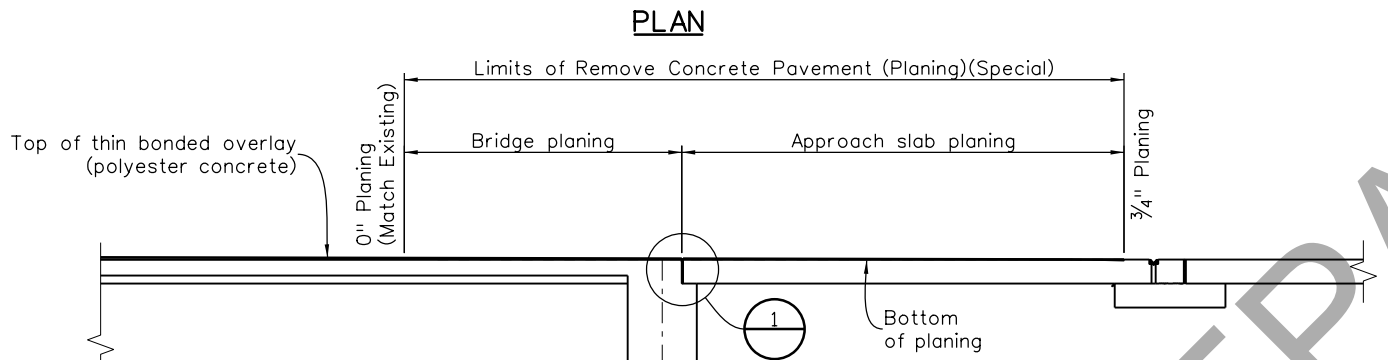


Revision Dates	(Preliminary Stage Only)
3/22	
3/23	

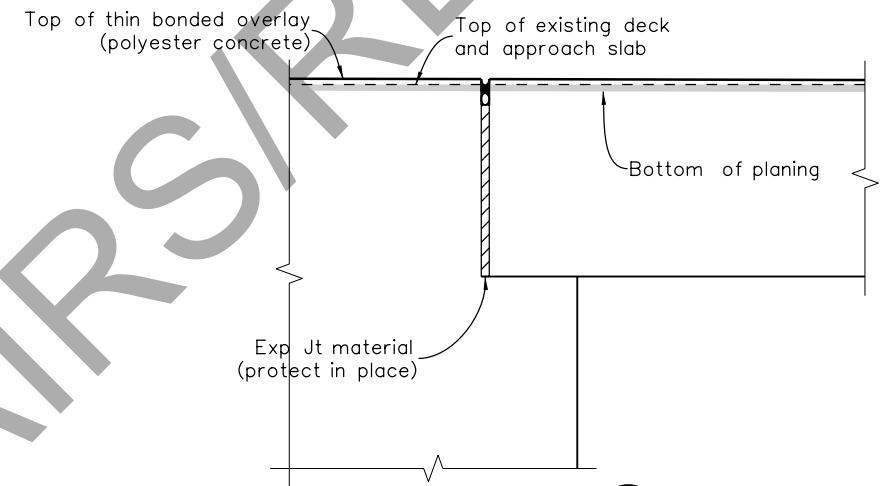
INITIALS	DESIGN	DATE	DETAIL	DATE	QUANTITY	DATE
By						
Checked By						



SECTION B



SECTION A



DETAIL 1

Note to Designer:
Redraw abutment detail to match existing conditions. Add additional joint filler locations if necessary based on existing conditions.

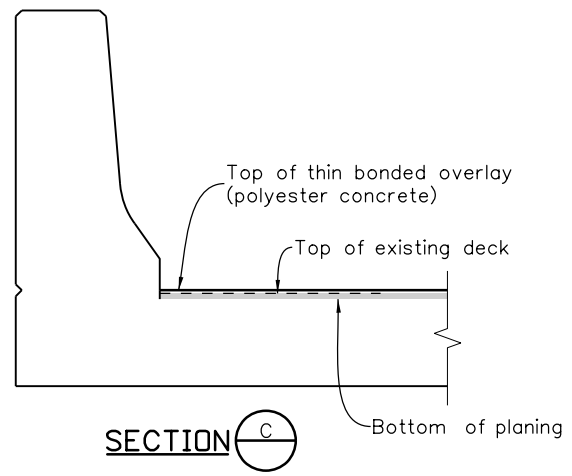
Note to Designer:
The designer should consider the following depending on the following existing conditions:

End of existing approach slab in good condition and there is an existing strip seal expansion device: Start the taper and overlay at the proposed 1-foot end dam shown.

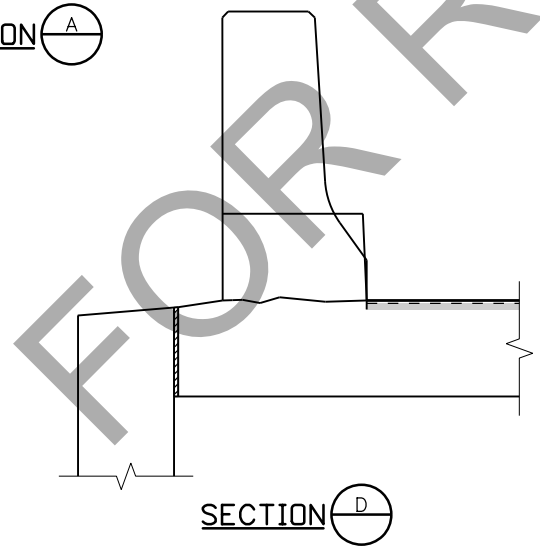
End of existing approach slab in bad condition and there is an existing strip seal expansion device: Consider removing the deteriorated end of approach slab to the expansion device and replacing with a polyester concrete end dam.

End of existing approach slab in good condition and there is no existing strip seal expansion device: Start the taper and overlay at the end of approach slab.

End of existing approach slab in bad condition and there is no existing strip seal expansion device: Start the taper and overlay at the end of approach slab, remove end of approach slab to sound concrete, and consider using a thickened polyester concrete end dam.



SECTION C



SECTION D

** STRUCTURES
X-XX-X

NOTES

- Do not install Joint Filler above 90°F or below 50°F. Joint filler used shall be on the CDDT approved product list.
- 30-foot planing tapers are based on a 3/4" overlay and a maximum 0.2% grade break along the existing profile.
- Planing length on bridge and approach slab varies per bridge, see General Layout Sheets.
- Planing equipment shall be capable of planing to the required depth flush with the face of curb or barrier.
- Contractor shall sawcut through Thin Bonded Overlay (Polyester Concrete) at joint at BF Abutment as soon as the overlay has set enough to walk on.

All seals for this set of drawings are applied to the cover page(s)

Print Date: \$DATE\$
File Name: Sheet_B-519-1AR.dgn
Horiz. Scale: Not to Scale Vert. Scale: As Noted
Unit Information Unit Leader Initials

Sheet Revisions		
Date:	Comments	Init.

Colorado Department of Transportation
2829 West Howard Place, 3rd Floor
Denver, CO 80204
Phone: 303-512-4079
FAX: 303-757-9197
Staff Bridge Branch

As Constructed
No Revisions:
Revised:
Void:

THIN BONDED OVERLAY (POLYESTER CONCRETE)
(1 OF 2)

Designer:	XXXXXXXX	Structure Numbers	X-XX-XX
Detailer:	XXXXXXXX	Structure Numbers	X-XX-XX
Sheet Subset:	BRIDGE	Subset Sheets:	BXX of XXX

Project No./Code
Project Number
Code
Sheet Number