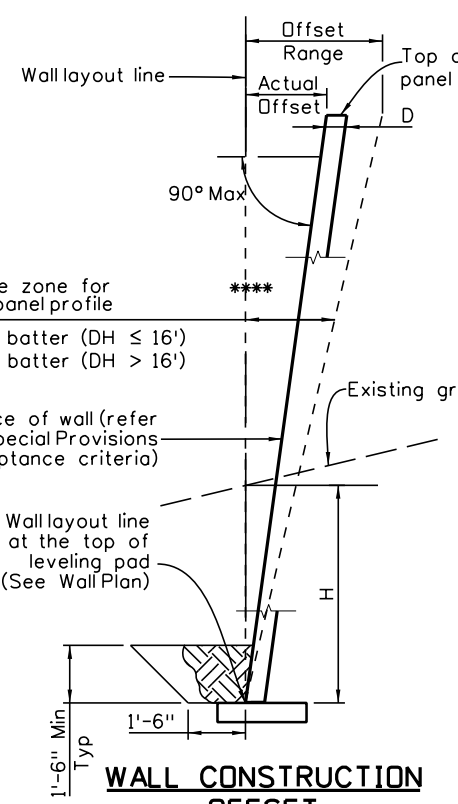


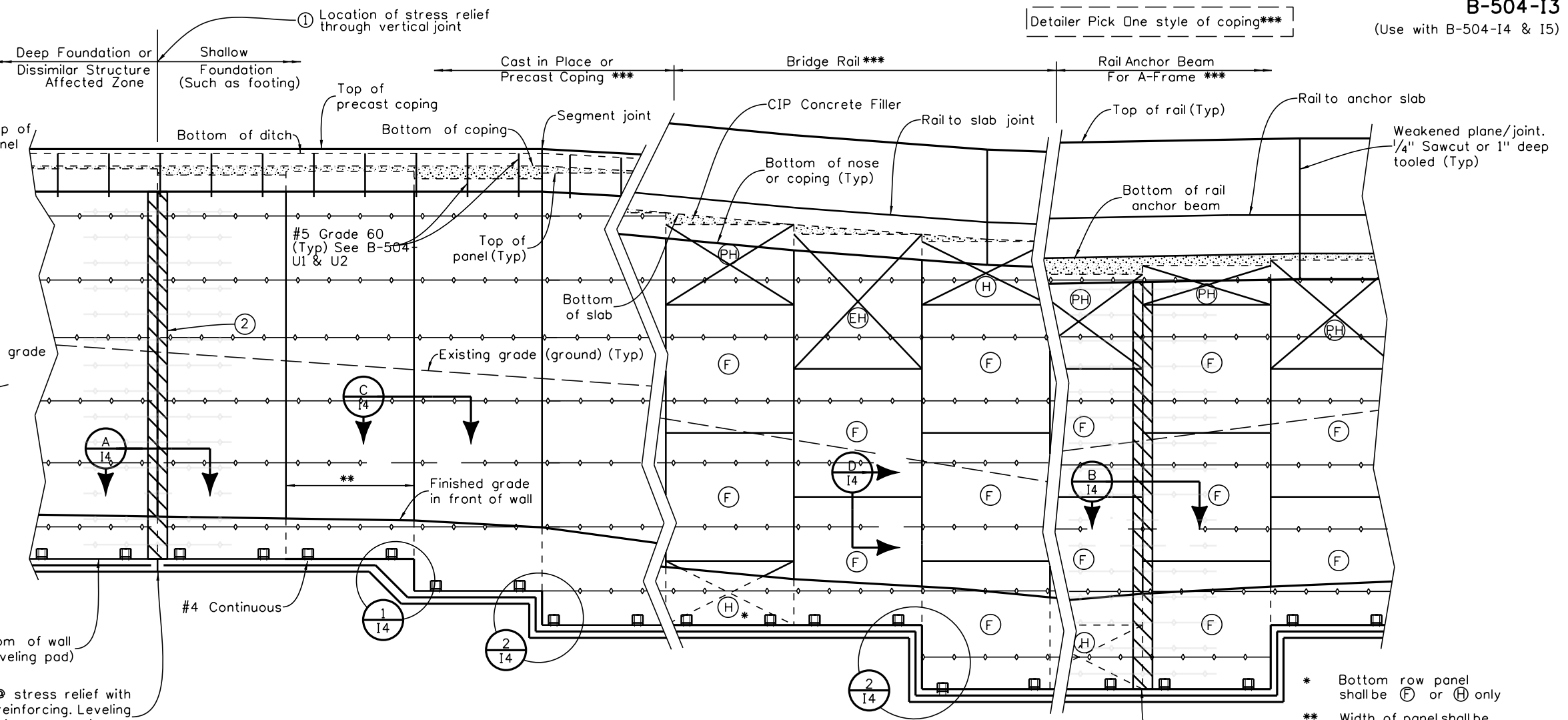
Detailer Pick One style of coping***

Note to designer:
Verify the wall layout line
accounts for offset range



**** Guide posts covering wall height for plumbness at 40'-0" Max interval with Min two posts per wall are required prior to wall facing construction.

⊕ Pilaster @ stress relief with stress relief reinforcing. Leveling pad reinforcing not continuous through stress relief



TYPICAL ELEVATION (WALL)

* Bottom row panel shall be (F) or (H) only
** Width of panel shall be 5'-0" (Min) or 10'-0" (Max)(Typ)

Note for the Designer:
Offset has to be checked for edge of pavement or rail/curb and width of shoulder.
Right of way (RDW) has to be checked against leveling pad excavation.
Wall segment tabulation shall be done by structural engineers.
For accuracy, wall quantity calculation shall be measured at 20' (Max) intervals.

KEYED NOTES:

- ① Stress relief vertical through joint for dissimilar structures or foundation.
- ② Soil reinforcement discontinued at joint. See B-504-14 & S6 for added tail reinforcing details.
- (F) Full size segmental panel (5'-0" height)
- (H) Half height segmental panel (2'-6" height)
- (PH) Partial height segmental panel
- (EH) Extended height segmental panel (top row panel shall be 7'-0" Max height)

WALL SEGMENT TABLE

XXXXXXXXXXXXX STATION *	FINISH GRADE ELEVATION	TOP OF LEVELING PAD ELEVATION	WALL DH	WALL RL	EXISTING ** GRADE HEIGHT H	EXISTING GRADE AVERAGE f	No of 1, 2, or 3 Block Steps

* Wall segment starting station ④ ** Existing grade average height per segment

NOTES:

1. Number of leveling pad steps shall be counted, reported on Quantity Tabulation on B-504-Q1 and labeled in wall elevation view.
2. Actual leveling pad step locations shall be located as directed by the Engineer.

Revision Dates	
9-16	10-24

INITIALS	DESIGN	DATE	DETAIL	DATE	QUANTITY	DATE
By						
Checked By						

All seals for this set of drawings are applied to the cover page(s)	Print Date: \$DATE\$	Sheet Revisions			Colorado Department of Transportation 2829 West Howard Place, 3rd Floor Denver, CO 80204 Phone: 303-512-4079 FAX: 303-757-9197 Staff Bridge Branch	As Constructed No Revisions: Revised: Void:	PANEL FACING MSE WALL DETAILS (COPING RAIL ANCHOR, DESIGN HEIGHT AND REINFORCEMENT LENGTH)(SHEET 1 OF 3)			Project No./Code Sheet Number
	File Name: Sheet_B-504-13.dgn	Date:	Comments	Init.			Designer: XXXXXXXX	Structure Numbers	XXXXXXXXXXXXX	
	Horiz. Scale: Vert. Scale: As Noted	Unit Information	Unit Leader Initials				Detailer: XXXXXXXX	Subset Sheets: WXX of XXX		
							Sheet Subset: WALL			