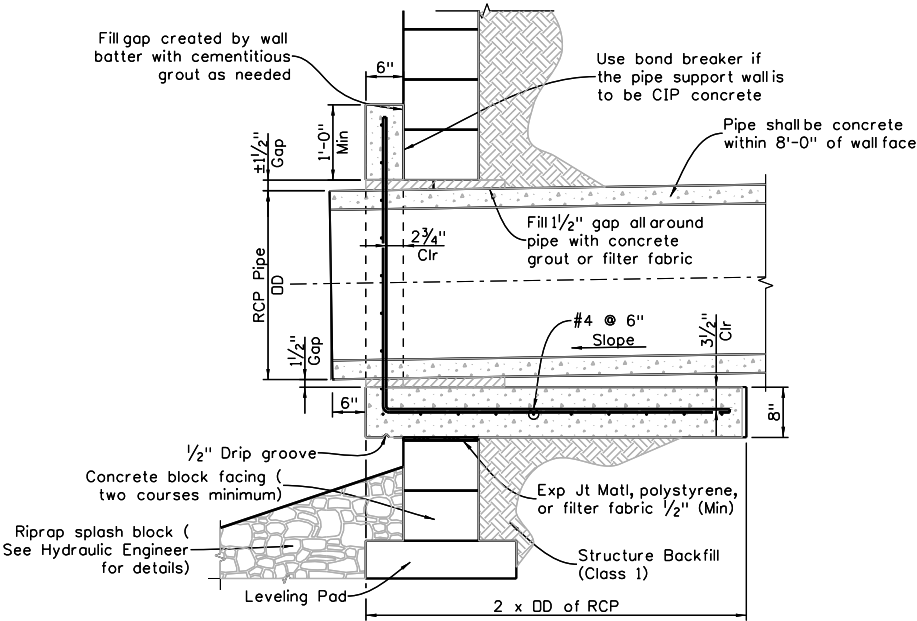
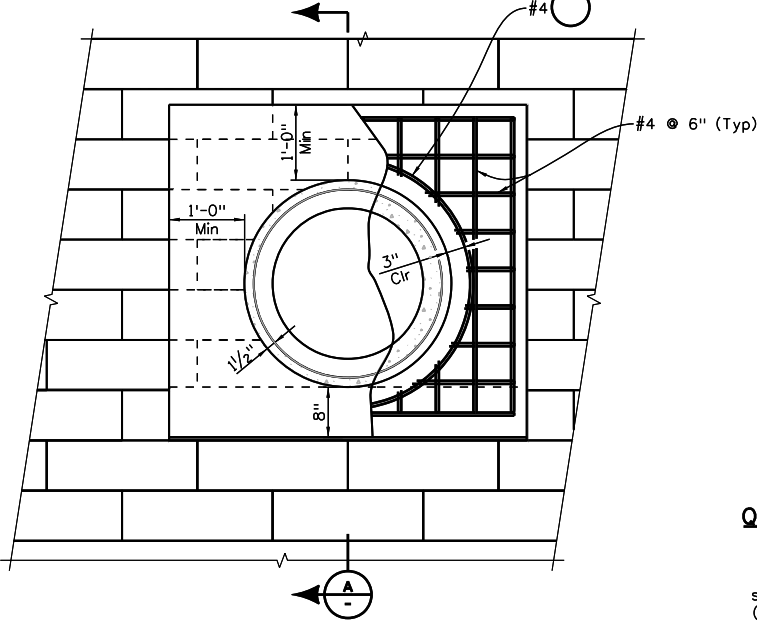


Revision	By	Date
09-16		10-24

INITIALS	DESIGN	DATE	DETAIL	DATE	QUANTITY	DATE
By						
Checked By						



SECTION (BLOCK FACE) A-A

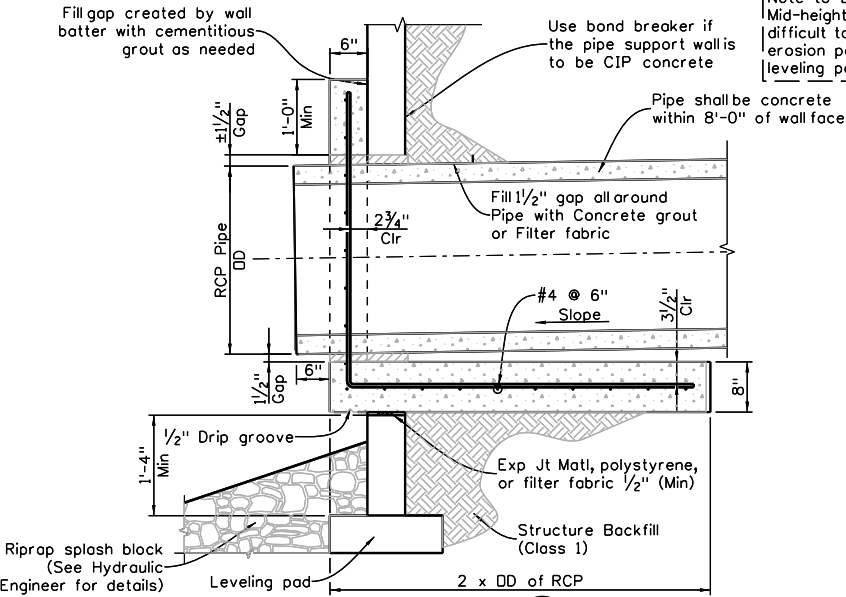


PIPE SUPPORT WALL ELEVATION (BLOCK FACE)

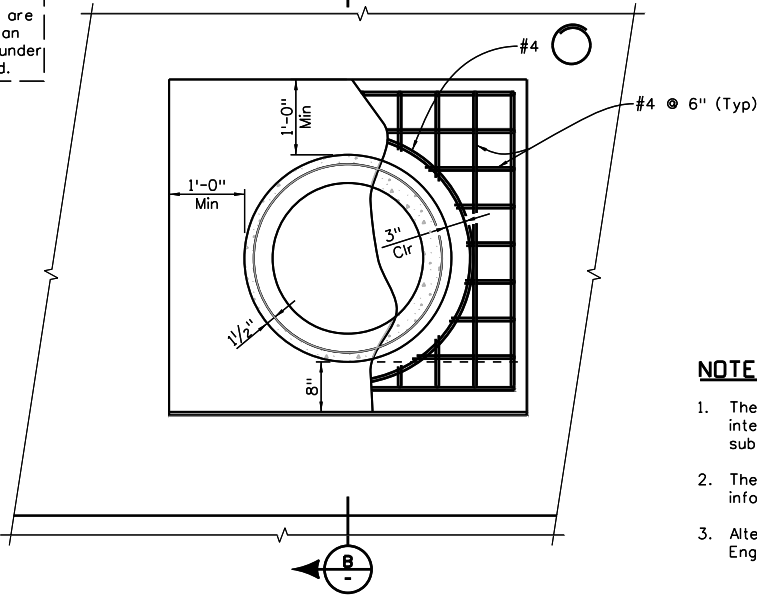
Pipe Diameter	Concrete	Reinforcing Steel
12 Inch	0.282 CY	25.2 Lb
18 Inch	0.528 CY	41.1 Lb
24 Inch	0.850 CY	60.5 Lb
30 Inch	1.250 CY	83.3 Lb
36 Inch	1.721 CY	110 Lb
42 Inch	2.270 CY	140 Lb
DUAL 48 Inch	10.60 CY	567 Lb

**BLOCK FACING MSE/GRS WALL  
QUANTITIES FOR INFORMATION ONLY**

Note: If it becomes necessary to locate a pipe splice within the zone of wall backfill, then the splice shall be covered with a band of flowfill 2'-0" (Min) thick. This work shall be included in Pay Item 206 Structural Backfill (Class 1).



SECTION (PANEL FACE) B-B



PIPE SUPPORT WALL ELEVATION (PANEL FACE)

**NOTES:**

1. The final dimensions, location, station, elevation and intercept angle of the pipe-run (to the wall) must be submitted by an Engineer.
2. The Contractor is to survey & stake the pipe-run information in the field, prior to construction.
3. Alternate through-pipe details may be submitted for Engineer approval.

All seals for this set of drawings are applied to the cover page(s)

Print Date: \$DATE\$	
File Name: Sheet_B-504-S8.dgn	
Horiz. Scale: Vert. Scale: As Noted	
Unit Information	Unit Leader Initials

**Sheet Revisions**

Date:	Comments	Init.

**Colorado Department of Transportation**



2829 West Howard Place, 3rd Floor  
Denver, CO 80204  
Phone: 303-512-4079  
FAX: 303-757-9197

Staff Bridge Branch

Initials

**As Constructed**

No Revisions:
Revised:
Void:

**PIPE THROUGH BLOCK  
OR PANEL WALL DETAILS**

Designer: XXXXXXXX	Structure XXXXXXXXXXXX
Detailer: XXXXXXXX	Numbers XXXXXXXXXXXX
Sheet Subset: WALL	Subset Sheets: WXX of XXX

**Project No./Code**

Sheet Number