

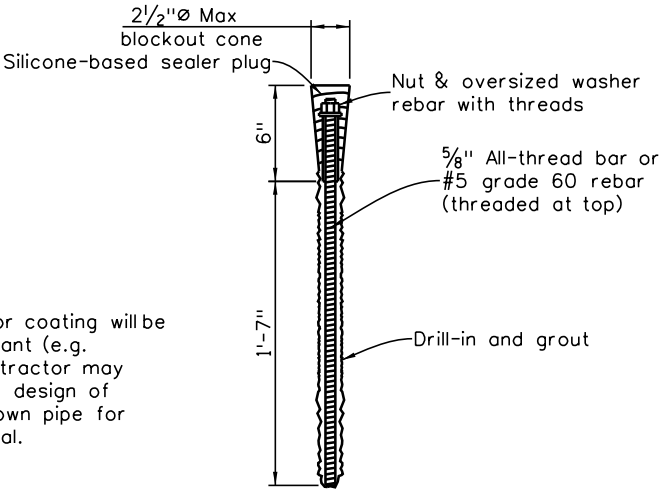
PRECAST COPING QUANTITIES
FOR INFORMATION ONLY

ITEM NO.	DESCRIPTION (Based on block + rustication depth of 8", D=1'-1")	UNIT	QUANTITY
601	Concrete Class D	CY/LF	0.074
602	Reinforcing Steel(Epoxy Coated)	LB/LF	11.4

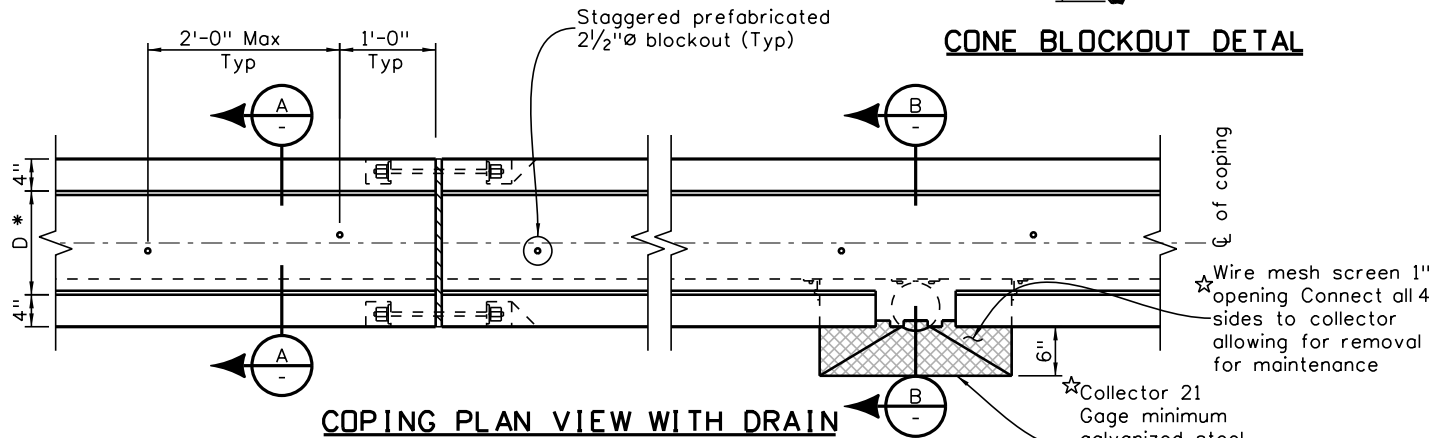
NOTES:

- Shop drawings including collector and down pipe are required for Engineer's review.
- Contractor may provide alternative connection between precast segments, however coping dimensions shall conform to plan. All hardware shall be galvanized.

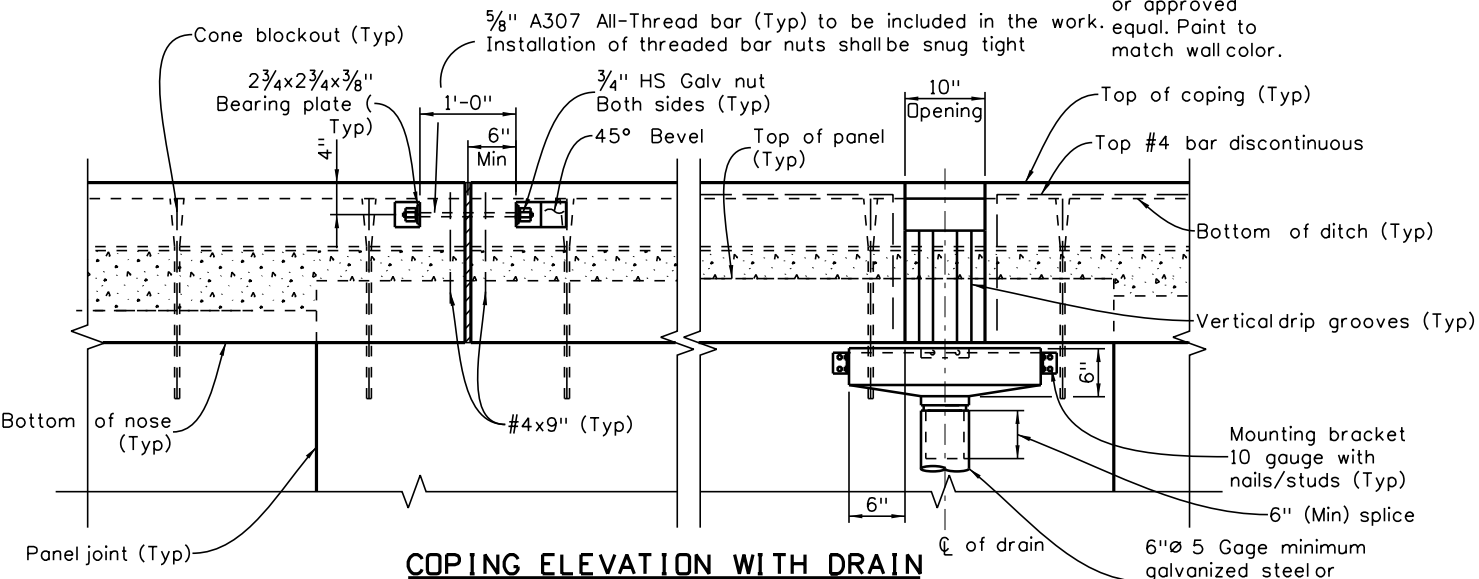
☆: All materials or coating will be corrosion resistant (e.g. galvanized). Contractor may submit alternate design of collector and down pipe for Engineer approval.



CONE BLOCKOUT DETAIL



COPING PLAN VIEW WITH DRAIN

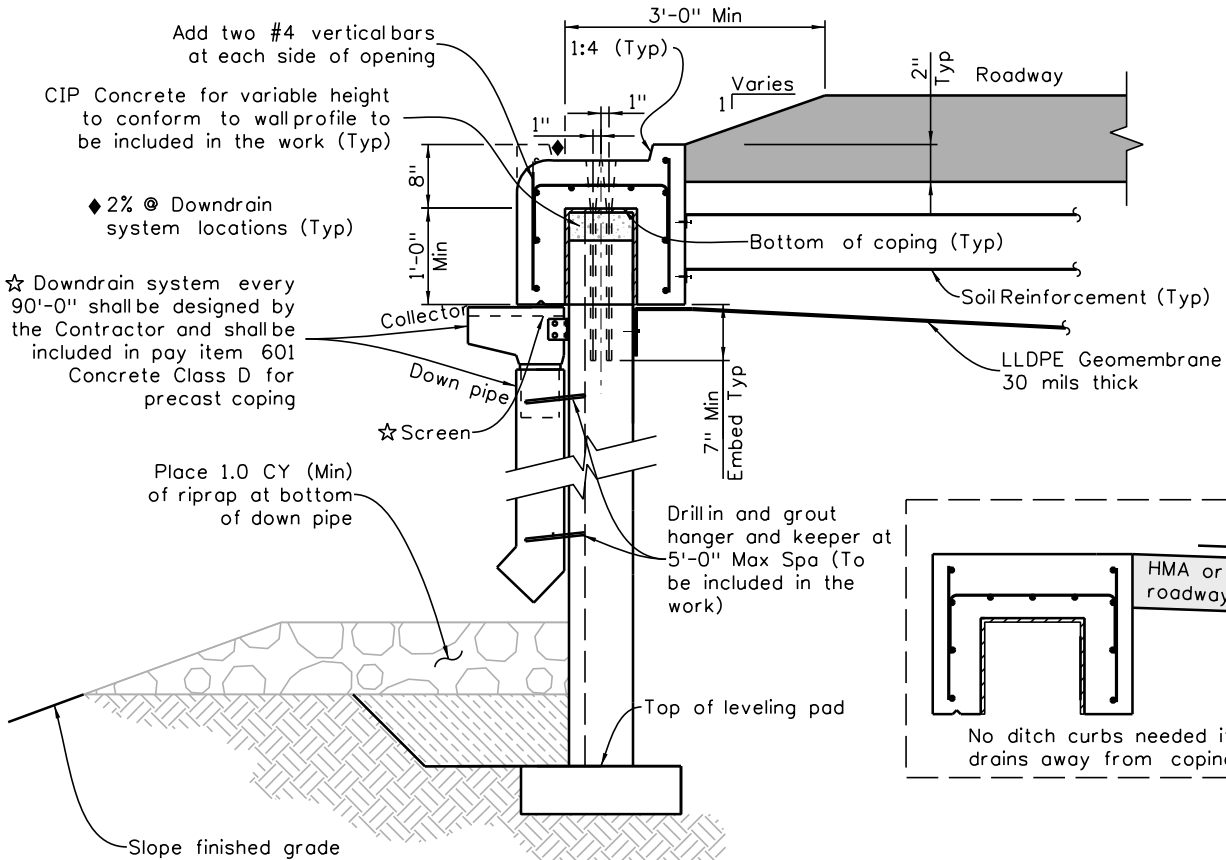


COPING ELEVATION WITH DRAIN

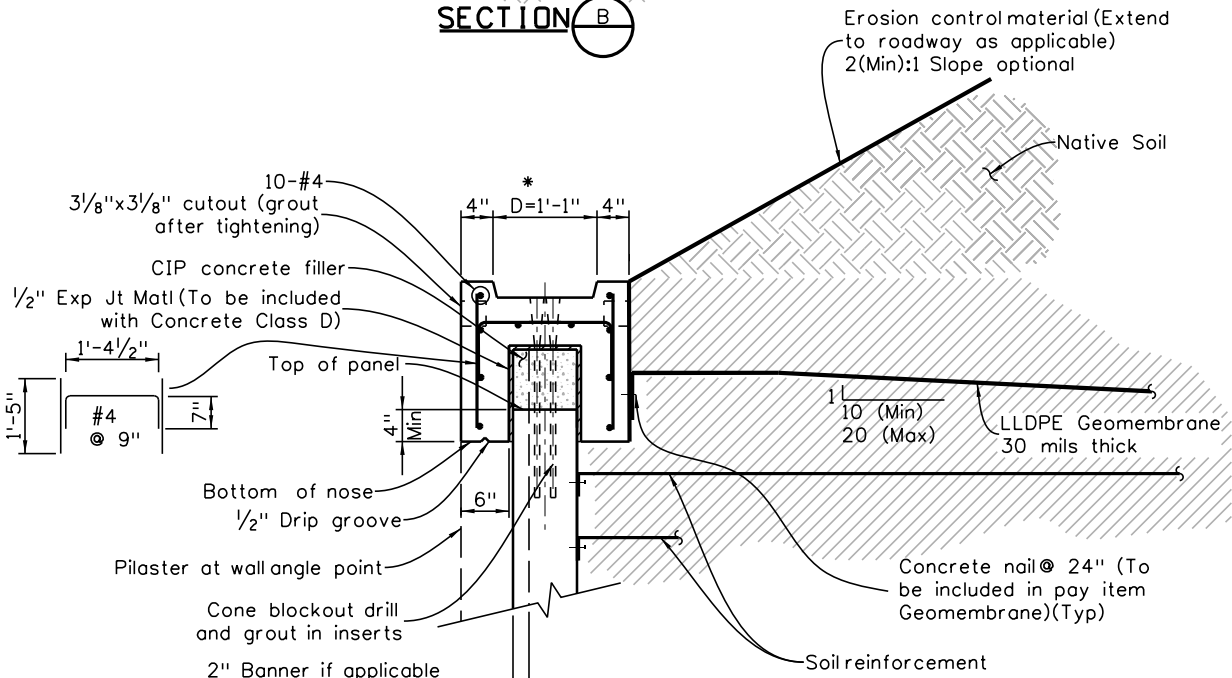
* Contractor shall verify panel and rustication dimensions prior to submitting shop drawings and fabrication. "D" dimension shall be based on the actual panel thickness.

Revision Dates
09-16
10-24

INITIALS	DESIGN	DATE	DETAIL	DATE	QUANTITY	DATE
By						
Checked By						



SECTION B



SECTION A

Print Date: \$DATE\$
File Name: Sheet_B-504-U2.dgn
Horiz. Scale: Vert. Scale: As Noted
Unit Information Unit Leader Initials

Sheet Revisions		
Date:	Comments	Init.

Colorado Department of Transportation

2829 West Howard Place, 3rd Floor
Denver, CO 80204
Phone: 303-512-4079
FAX: 303-757-9197

Staff Bridge Branch

As Constructed
No Revisions:
Revised:
Void:

PRECAST COPING, ROADWAY PAVEMENT OR CLAY PLUG DETAILS FOR PANEL FACING			
Designer:	XXXXXXXXX	Structure Numbers	XXXXXXXXXXXXX
Detailer:	XXXXXXXXX	Subset Sheets:	WXX of XXX
Sheet Subset:	WALL		

Project No./Code
Sheet Number

All seals for this set of drawings are applied to the cover page(s)