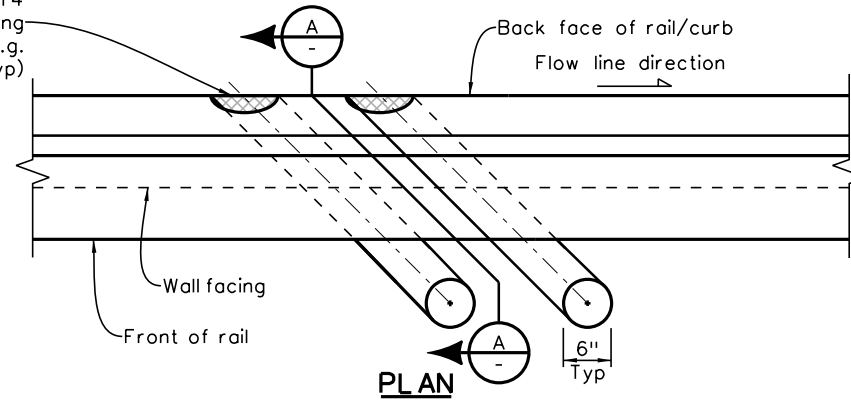


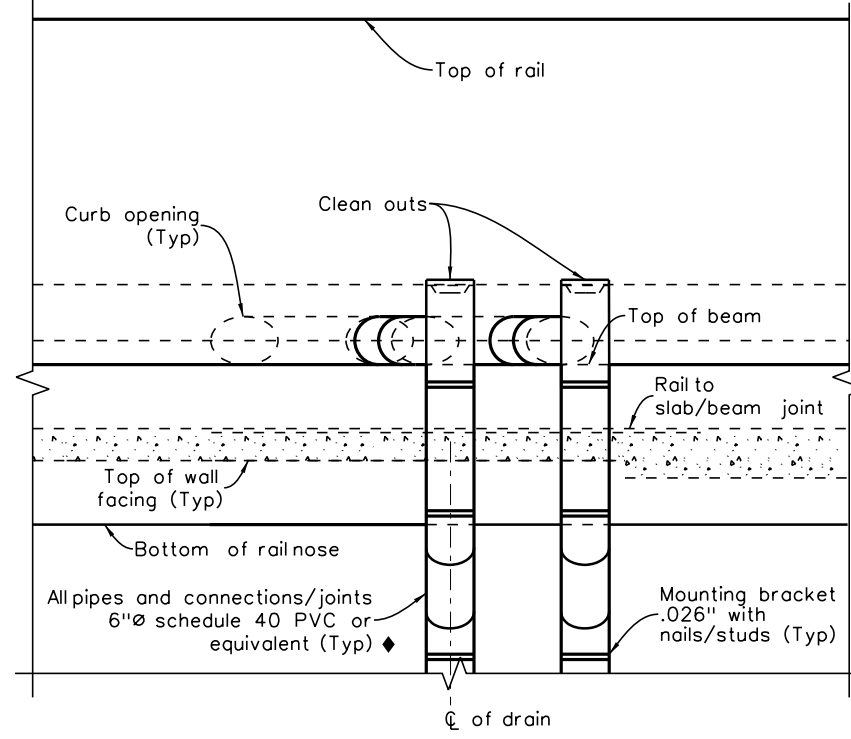
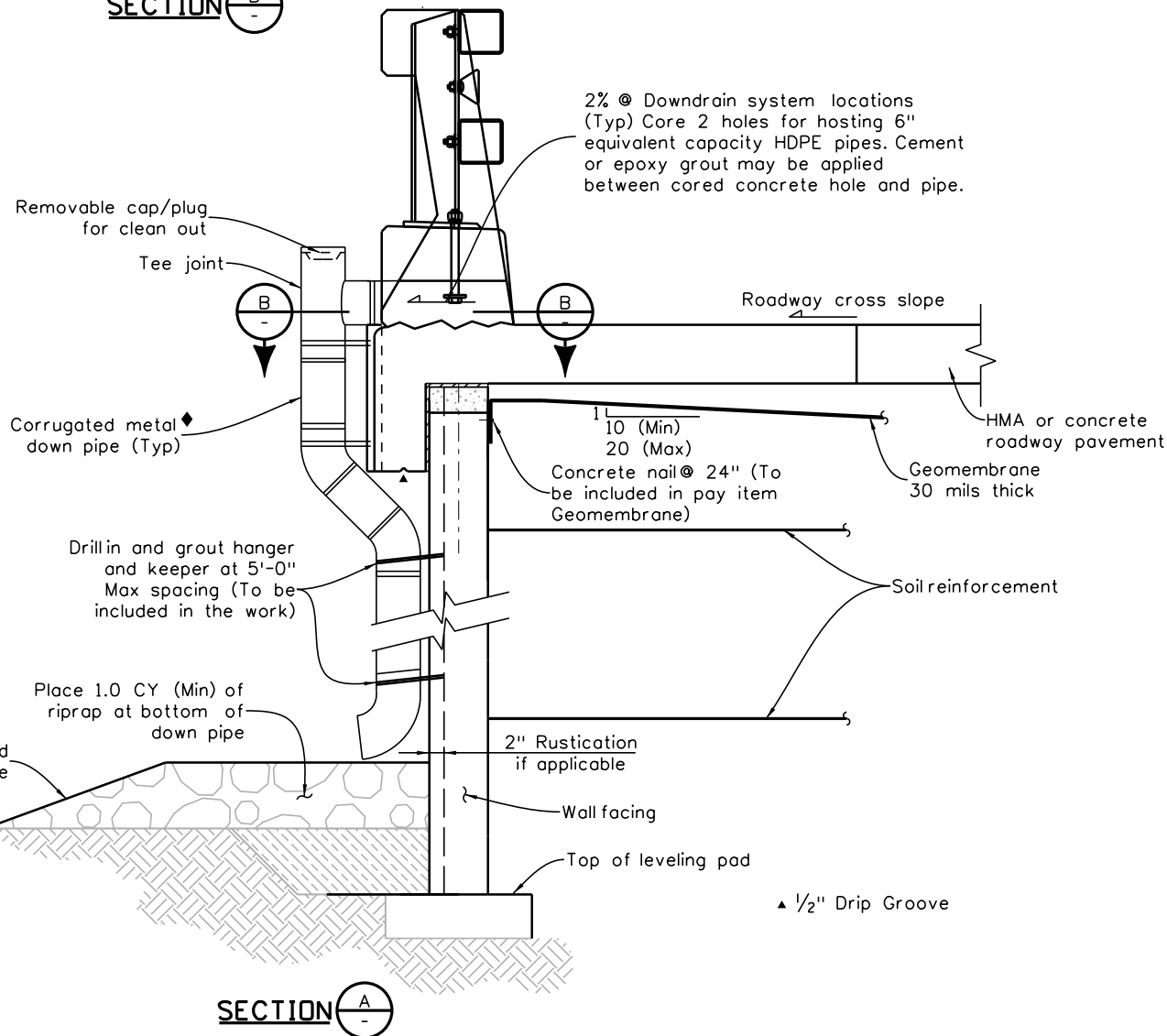
DETAILER: Turn off level for Bridge Rail not needed.

Note to Detailer/Designer: Scuppers are not best option. Confirm design with Hydraulics group.

Wire mesh screen 1" opening, Connect all 4 sides to collector allowing for removal later (e.g. retaining clips) (Typ)



◆: Material or coating will be corrosion resistant (e.g. galvanized). Contractor may submit alternate design of collector and down pipe for Engineer approval.



RAIL/WALL ELEVATION WITH DRAIN

NOTES:

- Working drawings for curb drain including collector and down pipe are required for Engineer's information prior to fabrication.
- Added bars and concrete at drain openings are included in pay item 606 Bridge Rail.
- Similar curb detail for Bridge Rail Type 10 MASH. Type 10 MASH posts shall not be located at scuppers.
- Detailed used to avoid or correct ponding.

REVISION	DATE	DESCRIPTION
09-16	10-24	

INITIALS	DESIGN	DATE	DETAIL	DATE	QUANTITY	DATE

All seals for this set of drawings are applied to the cover page(s)

Print Date: \$DATE\$
File Name: Sheet_B-504-V4.dgn
Horiz. Scale: Vert. Scale: As Noted
Unit Information Unit Leader Initials

Sheet Revisions		
Date:	Comments	Init.

Colorado Department of Transportation

2829 West Howard Place, 3rd Floor
Denver, CO 80204
Phone: 303-512-4079
FAX: 303-757-9197

Staff Bridge Branch

As Constructed
No Revisions:
Revised:
Void:

ALTERNATE REHAB FOR RAIL ANCHOR SLAB/BEAM RAIL/CURB DRAIN DETAILS			
Designer:	XXXXXXXX	Structure Numbers:	XXXXXXXXXXXXXX
Detailer:	XXXXXXXX	Subset Sheets:	WXX of XXX

Project No./Code
Sheet Number