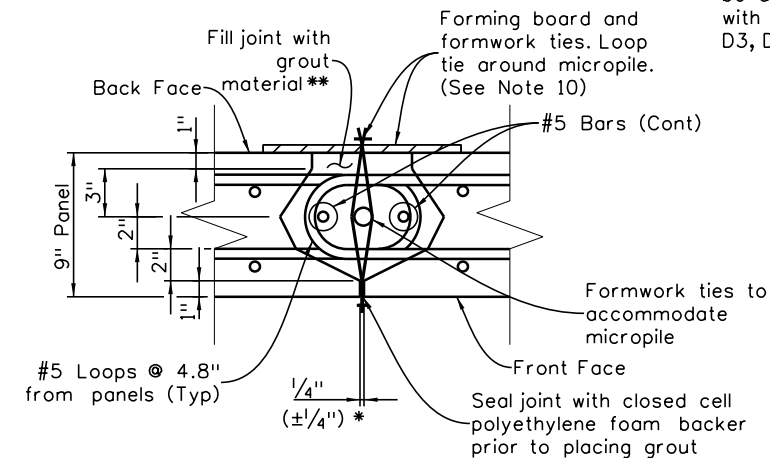


(This sheet must be accompanied with B-504-V2, D3, D5, & T1)

Wall Segment Table

Wall Station	Estimated Bedrock Elevation	DH or Casing Pay Length (Ft)	Minimum Bond Length (Ft)	Micropile Pay Length (Ft)	Actual Bedrock Elevation



VERTICAL JOINT DETAIL

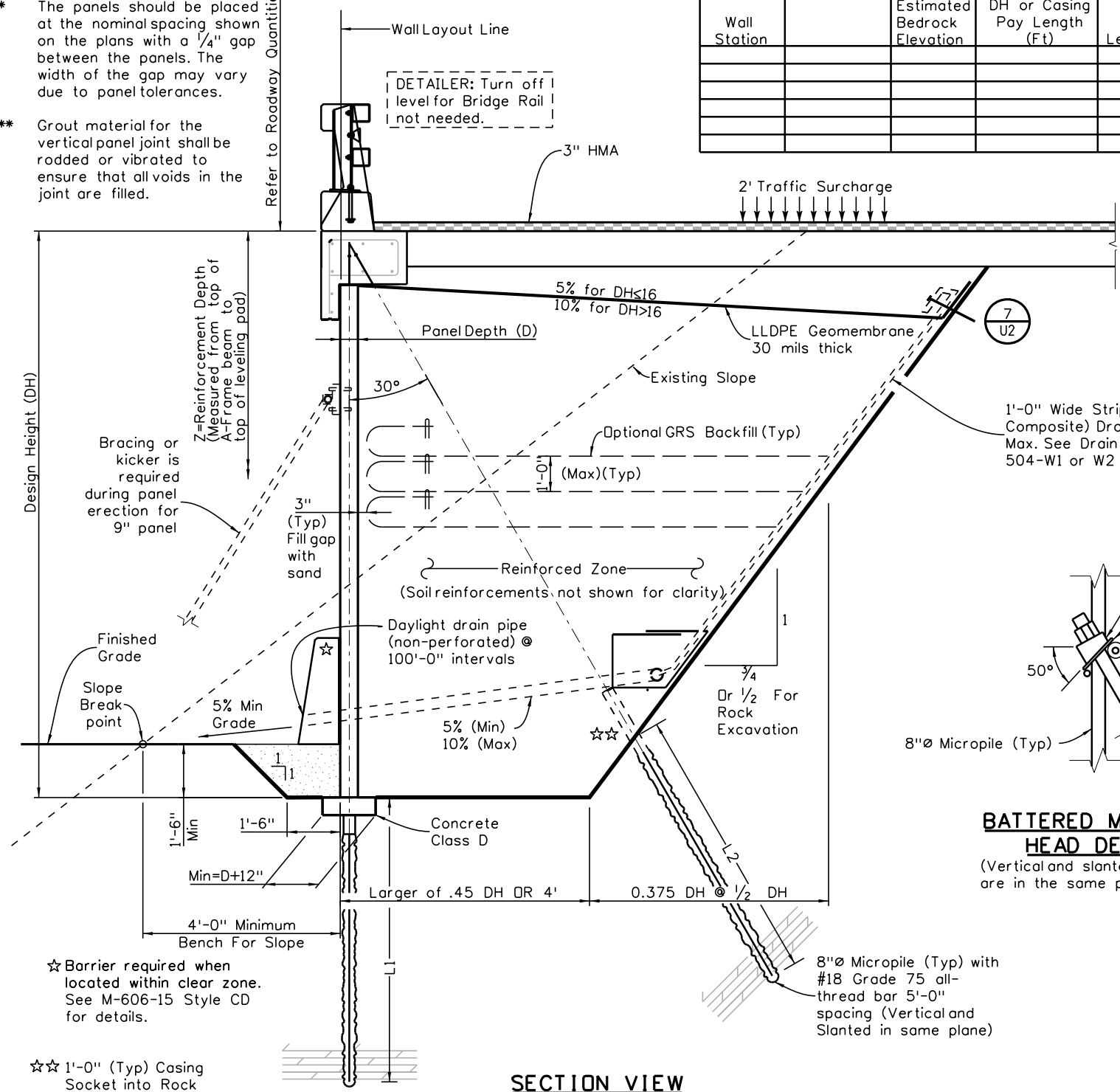
NOTES:

1. Stage I is for panel/micropile erection. Stage II is for MSE backfill.
2. For 9" thick panel, no casing is required at the panel vertical joint during Phase I construction. However, prior to backfill and reinforcement installation, kickers and battered micropile with casing as bracing are required for panel erection.
3. Panels are braced by micropiles with both front and back casings and additional bracing or kickers at the front may be required prior to grouting of vertical joints and subsequent MSE backfill.
4. Soil reinforcements may be spliced or modified to avoid interference with slanted micropile/casing.
5. For micropile installation, coring is allowed through concrete leveling pad.
6. Drain modifications, pieceable filter fabrics and holes are allowed where drain and micropiles conflict.
7. To accommodate loop bars and vertical panel joint, the panel thickness and reinforcements must be modified from B-504-I3 by the panel supplier. Extra material and labor shall not be paid separately but shall be included in the cost of Pay Item Panel Facing.
8. Wall shop drawings including panel details are required and are subject to the Engineer's approval.
9. Refer to B-504-T1 (Without Wire Basket) for optional backfill.
10. Stay-in-place fiber reinforced cement backer board drilled/nailed to panels with concrete screws may be used at joint.
11. Geotechnical report shall include anticipated MSE settlement. Roadway construction shall begin after a minimum of 45 days or 90% of anticipated settlement to avoid cracking due to differential settlement.

* The panels should be placed at the nominal spacing shown on the plans with a 1/4" gap between the panels. The width of the gap may vary due to panel tolerances.

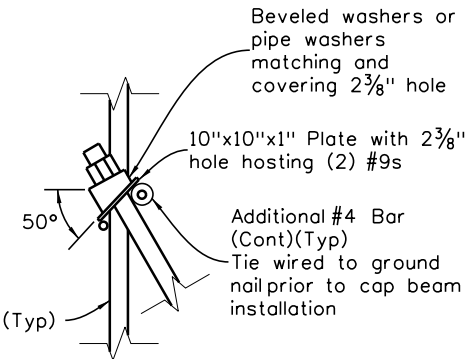
** Grout material for the vertical panel joint shall be rodded or vibrated to ensure that all voids in the joint are filled.

DETAILER: Turn off level for Bridge Rail not needed.



BATTERED MICROPILE HEAD DETAIL

(Vertical and slanted micropiles are in the same plane)



SECTION VIEW

Note for the Designer: Check slope stability during excavation shown on Geotech recommendation.

Revision Dates
09-16
10-24

INITIALS	DESIGN	DATE	DETAIL	DATE	QUANTITY	DATE

\$PLOT_INFD\$

All seals for this set of drawings are applied to the cover page(s)	Print Date: \$DATE\$	Sheet Revisions			Colorado Department of Transportation	As Constructed	TWO PHASE PANEL FACING MSE/GRS A-FRAME WALL FRONT MICROPILE EMBEDDED BETWEEN PANELS			Project No./Code	
	File Name: Sheet_B-504-V6 .dgn	Date:	Comments	Init.			No Revisions:	Designer: XXXXXXXX	Structure Numbers		XXXXXXXXXXXXXX
	Horiz. Scale: Vert. Scale: As Noted						Revised:	Detailer: XXXXXXXX			XXXXXXXXXXXXXX
Unit Information	Unit Leader Initials				Staff Bridge Branch	Void:	Sheet Subset: WALL	Subset Sheets: WXX of XXX	Sheet Number		

2829 West Howard Place, 3rd Floor
Denver, CO 80204
Phone: 303-512-4079
FAX: 303-757-9197

Staff Bridge Branch

Initials