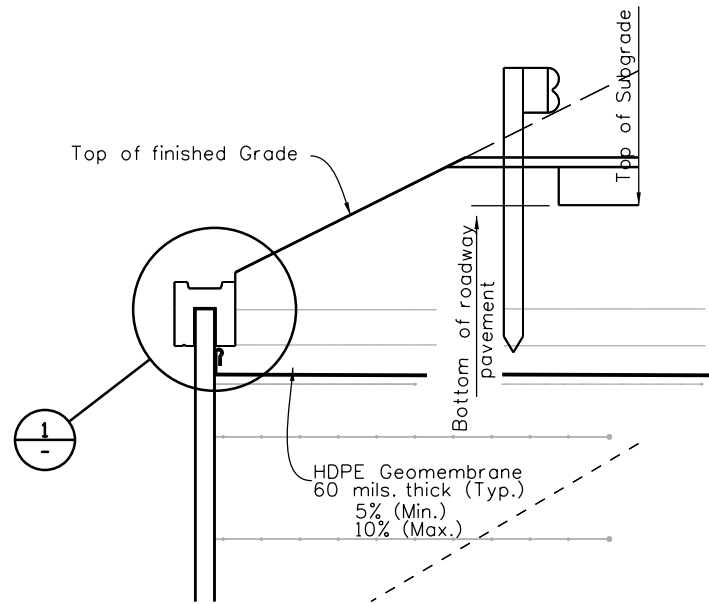
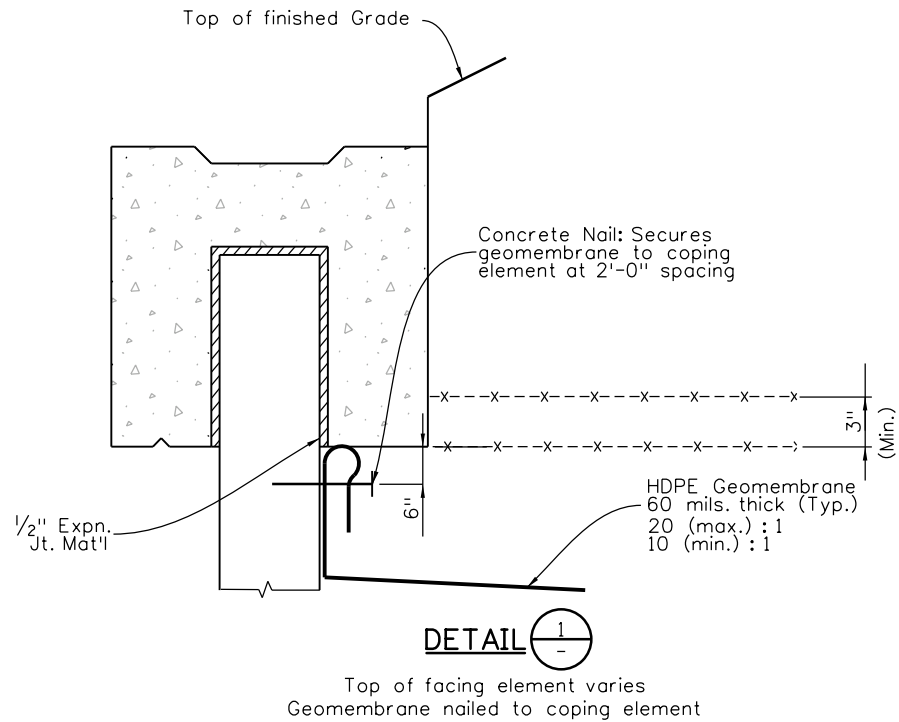


NOTES:

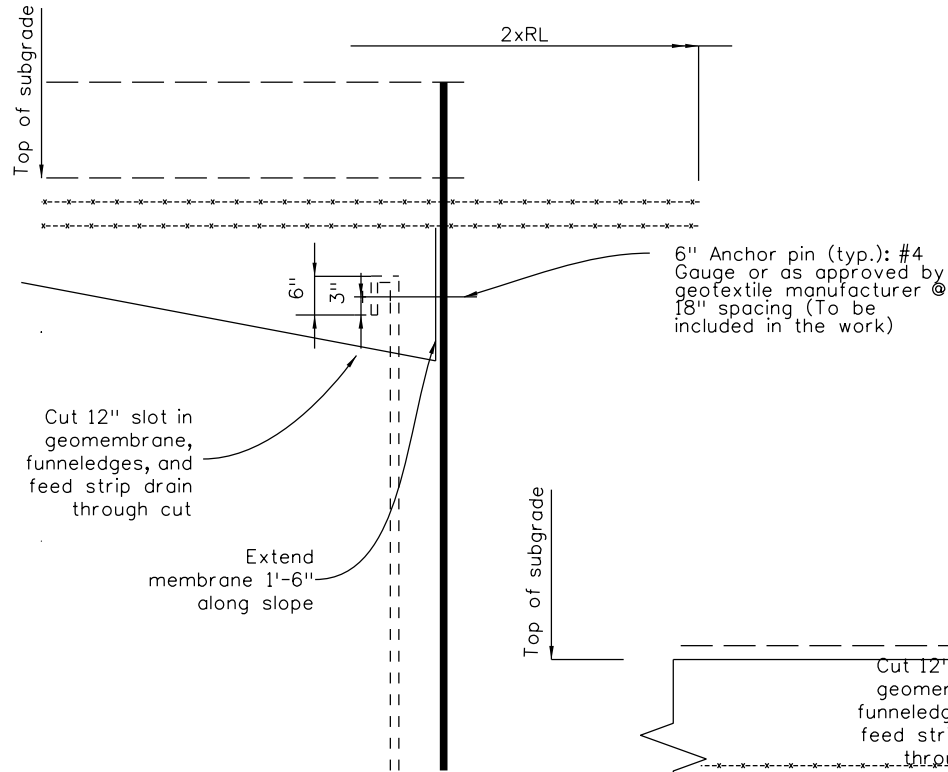
1. Drain and waterproofing membrane shall be fully functional with positive slope and outlet passage.
2. The Contractor shall provide site specific geomembrane and top soil reinforcement layout if conflict occurs and working drawing submittal is required.
3. The Contractor, as approved by the Engineer, may raise the location of the daylight drain pipe as appropriate.



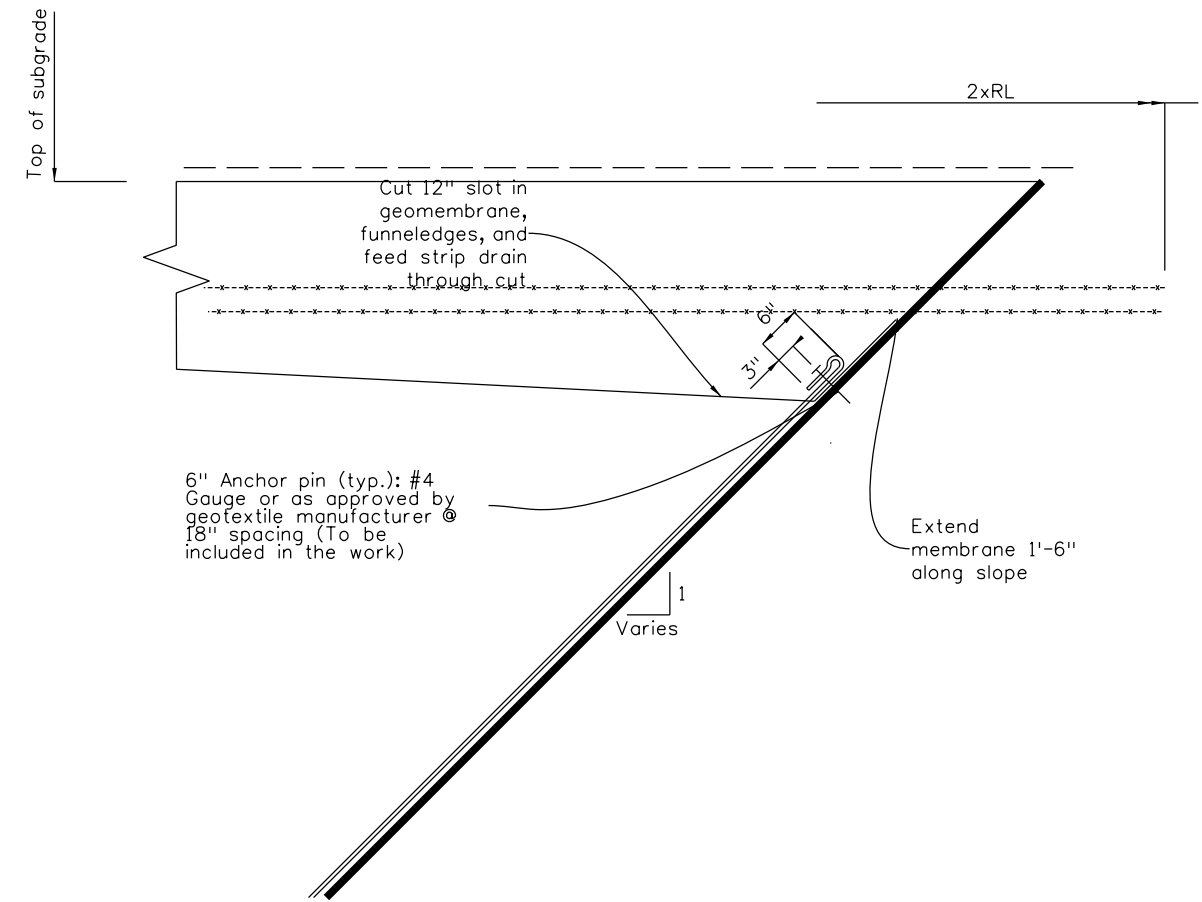
FACING



DETAIL 1



DETAIL 8



DETAIL 7

Revision Dates (Preliminary Stage Only)	
09-16	

Design		Detail		Quantities	
INITIAL	DATE	INITIAL	DATE	INITIAL	DATE
Designed By	Checked By	Detailed By	Checked By	Quantities By	Checked By

Print Date: 9/6/2016
File Name: Sheet_B-504-W2.dgn
Horiz. Scale: NTS Vert. Scale: As Noted
Staff Bridge Branch-Unit OXXX Unit Leader Initials

Sheet Revisions		
Date:	Comments	Init.

Colorado Department of Transportation
 4201 East Arkansas Avenue
 Room 107
 Denver, CO 80222
 Phone: 303-757-9309 FAX: 303-757-9197

Staff Bridge Branch **Initials**

As Constructed
No Revisions:
Revised:
Void:

DRAIN AND WATERPROOFING MEMBRANE DETAILS			
Designer: XXXXXXXX	Structure Numbers	WALL-X-XX-XX	Project No./Code
Detailer: XXXXXXXX	WALL-X-XX-XX	Code	
Sheet Subset: Wall	Subset Sheets: WXX of XX		Sheet Number

Project No./Code
Project Number
Code
Sheet Number