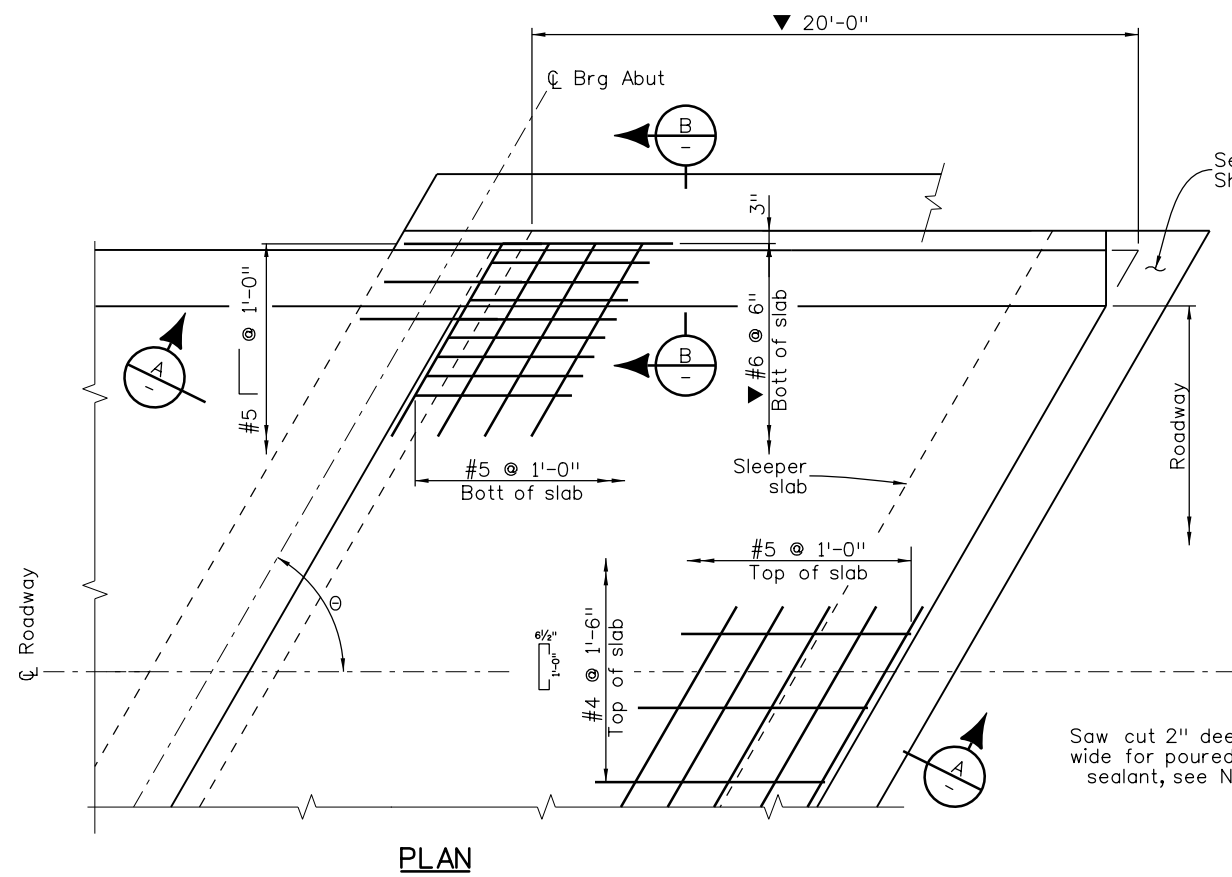


Revision Dates	(Preliminary Stage Only)	3/07	6/15	3/19	3/23
5/00	4/02	6/04	10/13		

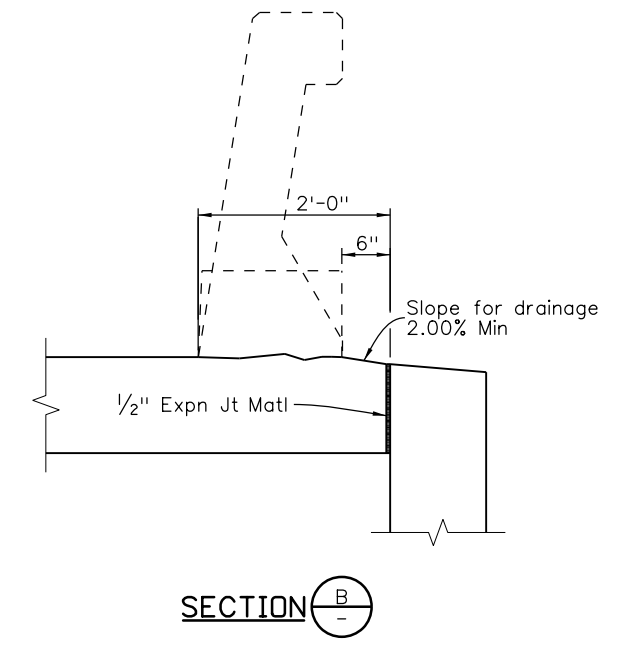
INITIALS	DESIGN	DATE	DETAIL	DATE	QUANTITY	DATE
By						
Checked By						



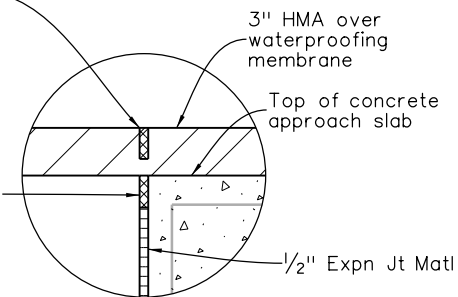
▼ Designer: Use #9 for approach slabs greater than 20' and less than 31' long.

Designer: Add reference to Bridge Geometry Sheets or provide elevation table.

Designer: Do not use this sheet when the bridge movement exceeds 1/2", nor when the approach roadway is concrete.



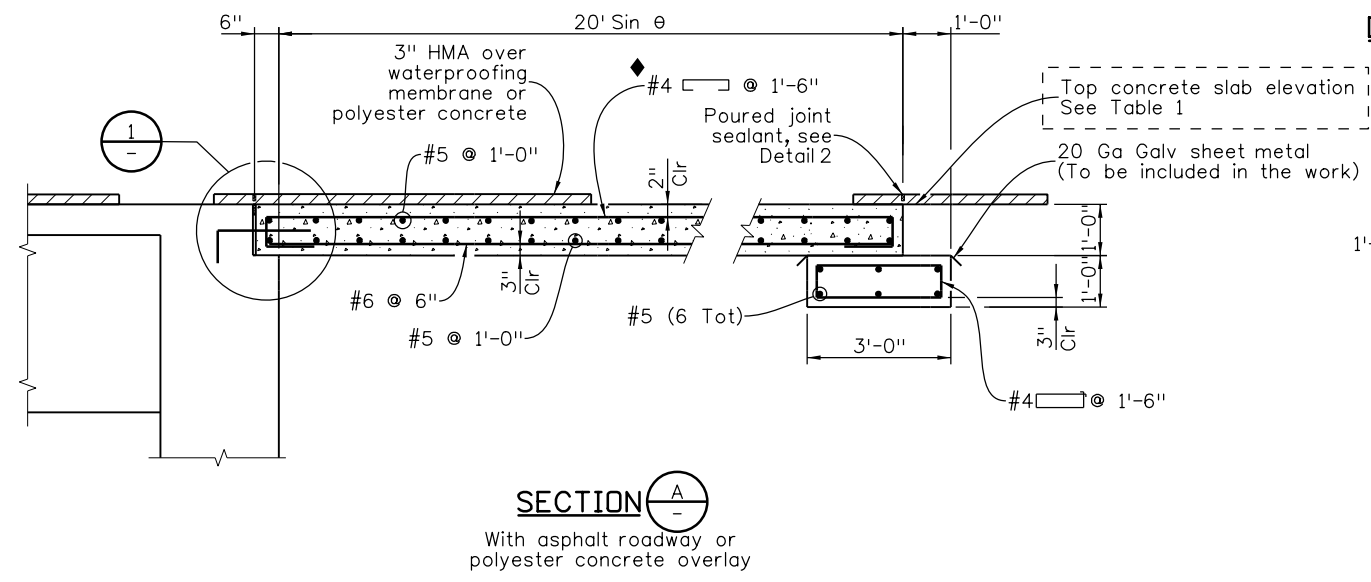
Saw cut 2" deep 1/2" wide for poured joint sealant, see Note 5



2" Deep poured joint filler, polysulfide or silicone sealant. Extend up to sidewalk, and 6" up face of rail curb.

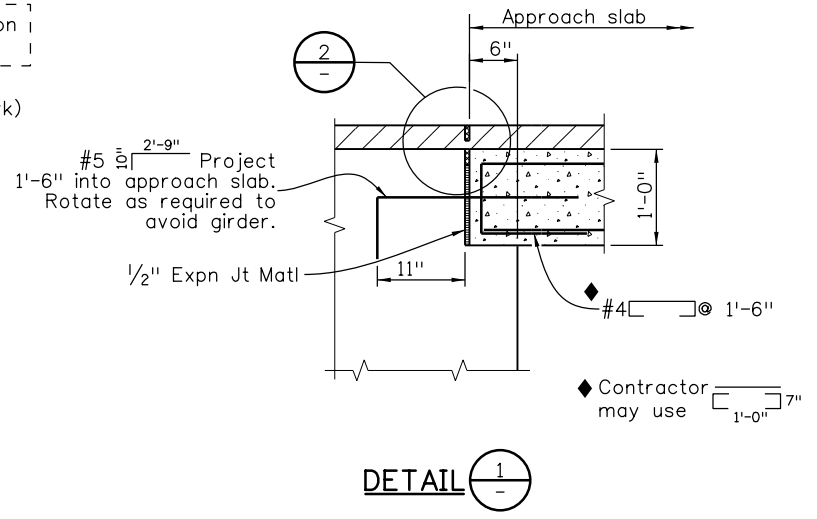
**NOTES:**

- Concrete Class DF shall be used for approach slabs.
- Approach slab concrete shall be cured in accordance with the Specifications for Bridge Deck Concrete in Subsection 601.
- The top surface of the post-tensioning block, if any, shall be covered with 1" of low density polystyrene foam. See B-----.
- Expansion joint material shall meet AASHTO M213.
- Saw cut 2" deep of new HMA for 1/2" wide poured joint sealant. The poured joint shall be included in Item 408, Joint Sealant, LF.



With asphalt roadway or polyester concrete overlay

**DETAIL 2**



Elevation Location	Left Flowline	At crown	Right flowline
Abutment 1	---	---	---
Abutment X	---	---	---

All seals for this set of drawings are applied to the cover page(s)	Print Date: \$DATE\$	<b>Sheet Revisions</b>		Colorado Department of Transportation		As Constructed		<b>APPROACH SLAB DETAILS ASPHALT W/SLEEPER</b>		Project No./Code
	File Name: Sheet_B-601-1.dgn	Date:	Comments	Init.	2829 West Howard Place, 3rd Floor Denver, CO 80204 Phone: 303-512-4079 FAX: 303-757-9197		No Revisions:	Designer: XXXXXXXX Structure Numbers X-XX-XX		Project Number
	Horiz. Scale: Not to Scale Vert. Scale: As Noted				Staff Bridge Branch		Revised:	Detailer: XXXXXXXX Structure Numbers X-XX-XX		Code
	Unit Information Unit Leader Initials				Initials		Void:	Sheet Subset: BRIDGE Subset Sheets: BXX of XXX		Sheet Number