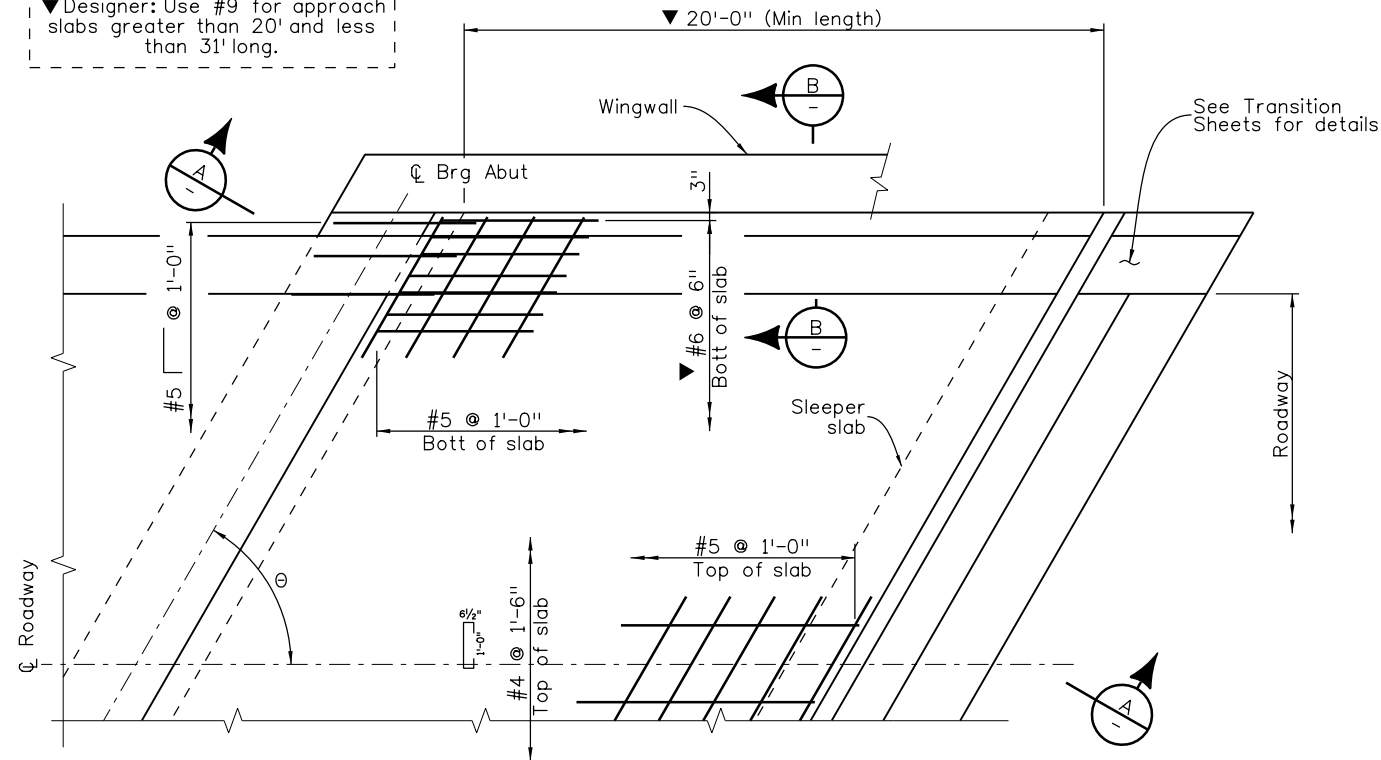


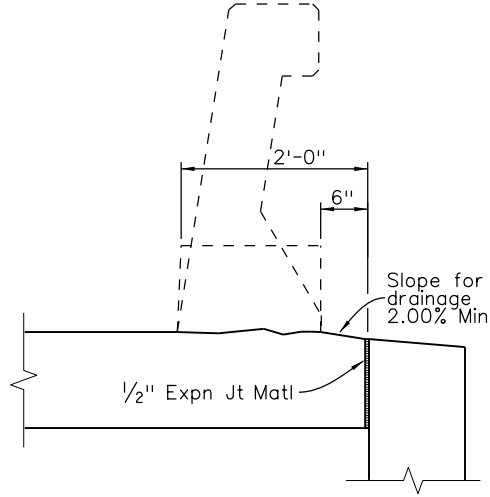
Revision Dates	(Preliminary Stage Only)	6/15	3/19	3/23
4/02	9/02	6/04	3/07	10/13

INITIALS	DESIGN	DATE	DETAIL	DATE	QUANTITY	DATE
By						
Checked By						

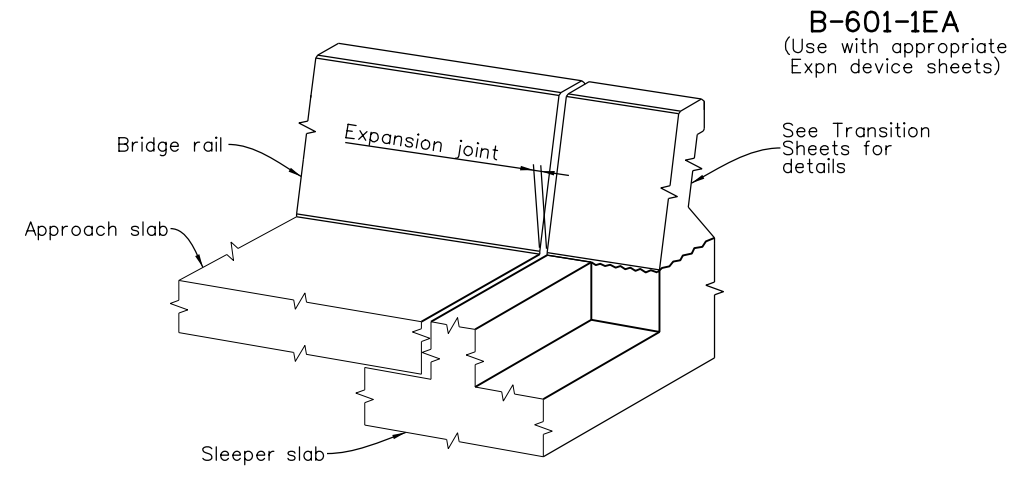
▼ Designer: Use #9 for approach slabs greater than 20' and less than 31' long.



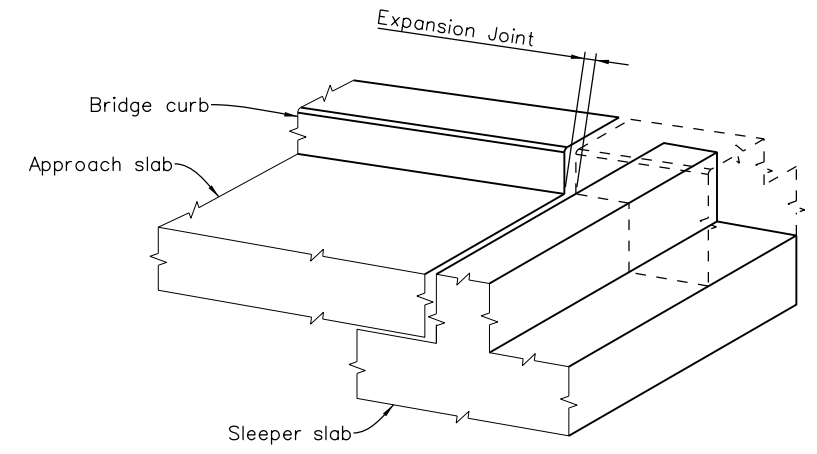
PLAN



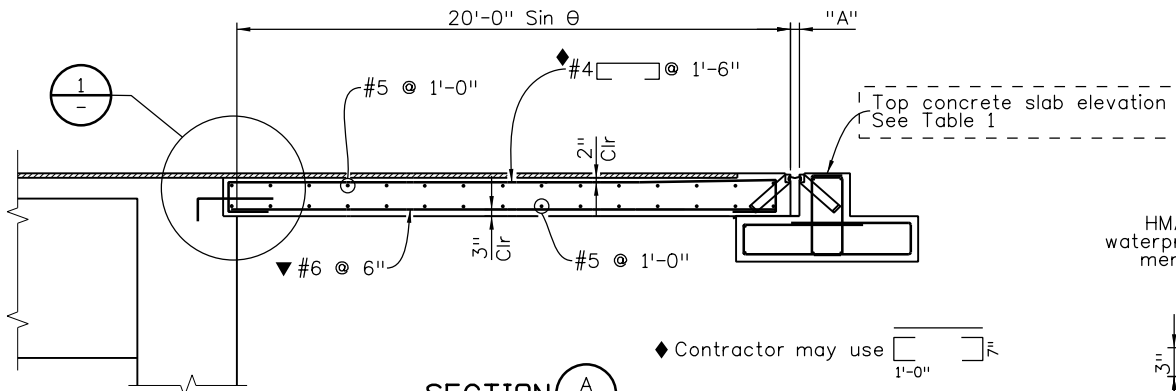
SECTION B



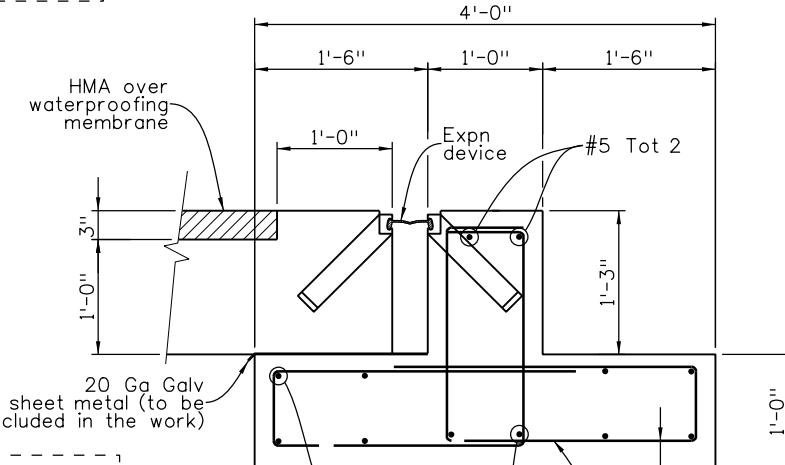
ISOMETRIC VIEW TYPE 9 RAIL



ISOMETRIC VIEW TYPE 10 RAIL

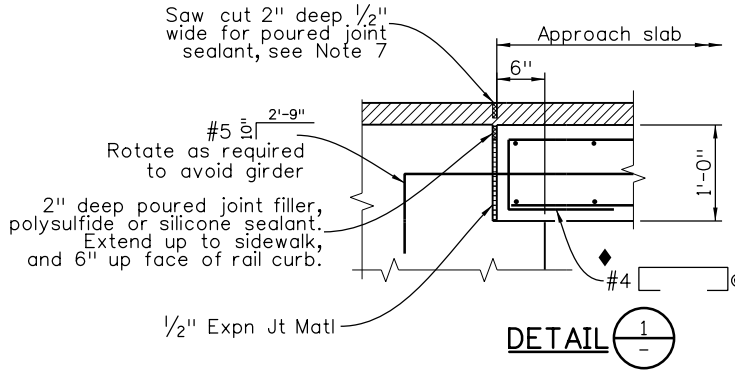


SECTION A



SLEEPER SECTION

Taken normal to expansion device



DETAIL 1

◆ Contractor may use [ ] @ 1'-0"

Designer: Add reference to Bridge Geometry Sheets or provide elevation table.

TABLE 1

Elevation Location	Left Flowline	At crown	Right flowline
Abutment 1	---	---	---
Abutment X	---	---	---

NOTES:

- Concrete Class DF shall be used for approach slabs.
- Expansion joint material shall meet AASHTO M213.
- For expansion device details see B\_\_\_\_\_.
- For curb and rail details see B\_\_\_\_\_.
- Approach slab concrete shall be cured in accordance with the Specifications for Bridge Deck Concrete in Subsection 601.
- The top surface of the post-tensioning block, if any, shall be covered with 1" of low density polystyrene foam. See B\_\_\_\_\_.
- Saw cut 2" deep of new HMA for 1/2" wide poured joint sealant. The poured joint shall be included in Item 408, Joint Sealant, LF.

All seals for this set of drawings are applied to the cover page(s)	Print Date: \$DATE\$	Sheet Revisions		Colorado Department of Transportation		As Constructed		APPROACH SLAB DETAILS		Project No./Code	
	File Name: Sheet_B-601-1EA.dgn	Date:	Comments	Init.	2829 West Howard Place, 3rd Floor Denver, CO 80204 Phone: 303-512-4079 FAX: 303-757-9197		No Revisions:	ASPHALT/ 0-4" JOINT		Project Number	
	Horiz. Scale: Not to Scale Vert. Scale: As Noted				Staff Bridge Branch		Revised:	Designer: XXXXXXXX	Structure Numbers	X-XX-XX	Code
	Unit Information Unit Leader Initials				Initials		Void:	Detailer: XXXXXXXX	Subset Sheets: BXX of XXX	Sheet Number	