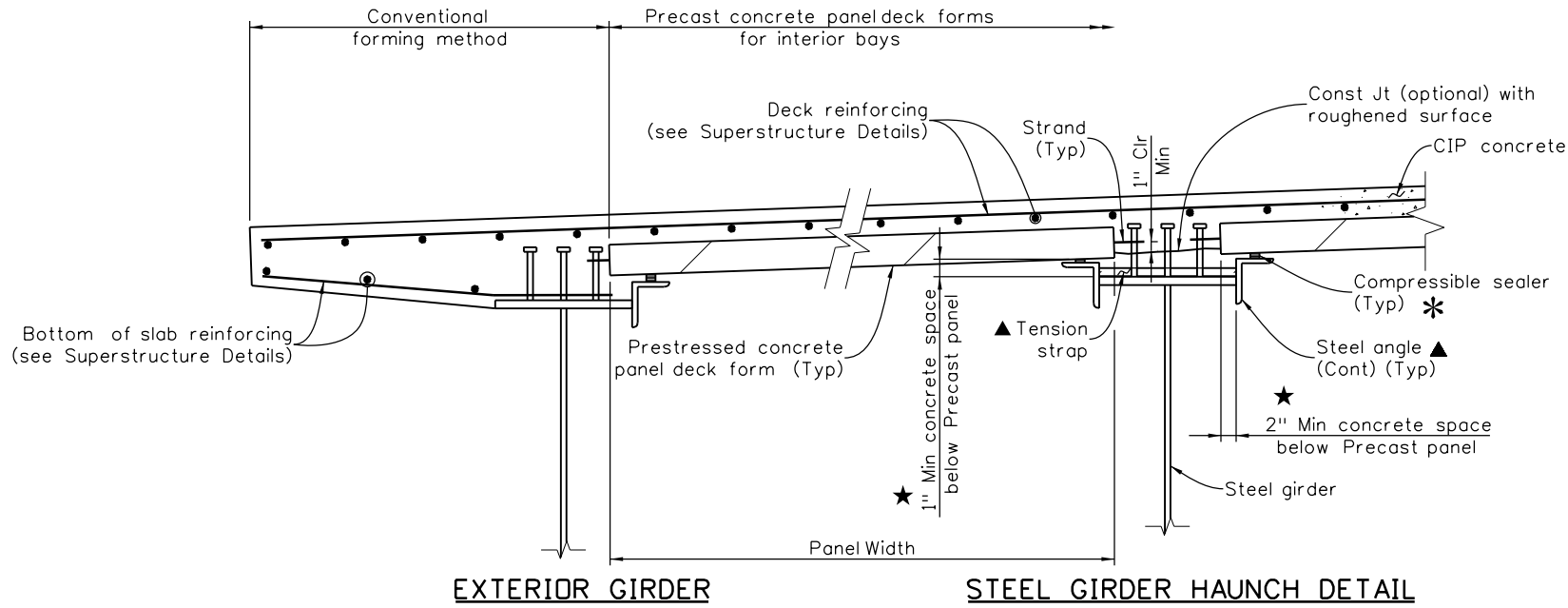


Revision Dates	3/99	11/99	4/02	3/07	10/13	12/20	3/23	9/24

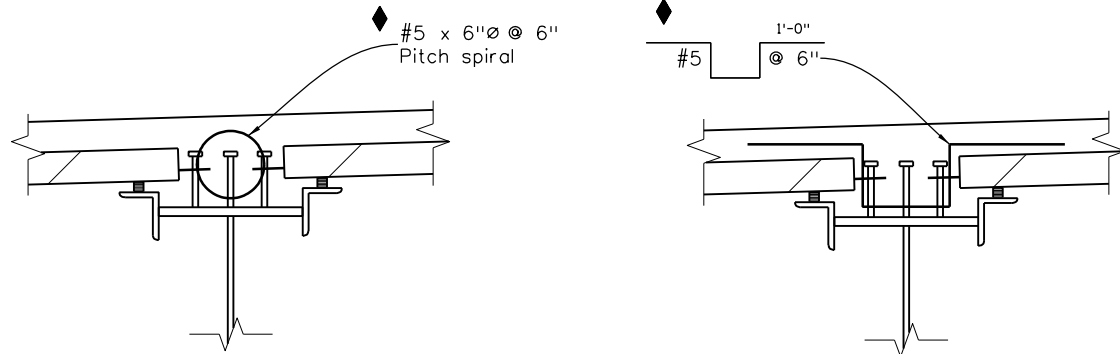
INITIALS	DESIGN	DATE	DETAIL	DATE	QUANTITY	DATE
By						
Checked By						

\$PLOT_INFO\$

B-601-5S
(Use with B-601-4)

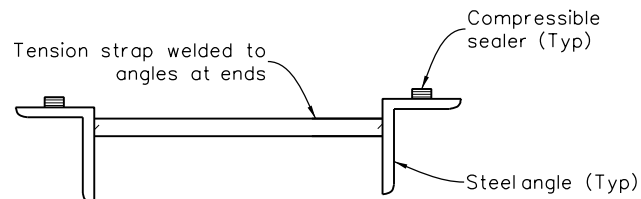


SECTION

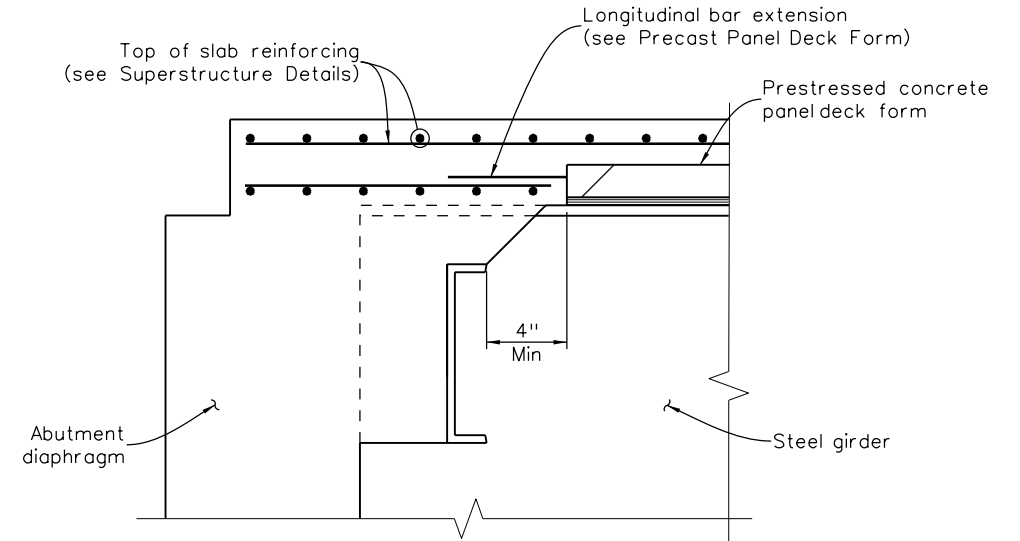


REINFORCING DETAIL ALTERNATES

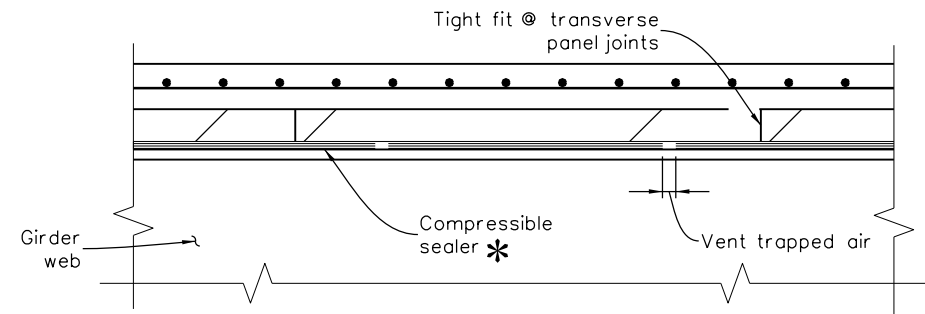
(Either one may be used)



▲ PANEL SUPPORT DETAIL



SECTION AT ABUTMENT



SECTION THRU TRANSVERSE
PANEL JOINTS

LEGEND:

- ▲ The angles, tension straps and compressible sealer material are shown for illustration and show only one potential method of support. No field welding to the girders or shear studs shall be allowed. Panels shall be secured to the angle supports with an approved adhesive/sealant as required for stability and sealing. The Contractor is responsible for the design of the panel support system and the stability of the deck panels during installation and deck pour. When precast panels are used as a pay item, they will be paid as plan quantities and will not be adjusted for actual quantities.
- * Compressible sealer shall be resilient, and continuous, support material such as expansion joint material, or medium density styrene or urethane foam.
- ◆ Required when longitudinal stud spacing is less than 1'-0", and shall be epoxy coated.
- ★ The minimum required dimensions to ensure concrete flow under panel for complete bearing.

All seals for this set of drawings are applied to the cover page(s)	Print Date: \$DATE\$	<div><div></div><div></div><div></div><div></div><div></div></div>	Sheet Revisions			Colorado Department of Transportation		As Constructed		PRECAST PANEL DECK FORM			Project No./Code	
	File Name: Sheet_B-601-5S.dgn		Date:	Comments	Init.	<div><div></div><div>2829 West Howard Place, 3rd Floor Denver, CO 80204 Phone: 303-512-4079 FAX: 303-757-9197</div></div> <div>Staff Bridge Branch</div>	No Revisions:		Project Number					
	Horiz. Scale: None Vert. Scale: As Noted													
	Unit Information Unit Leader Initials						Revised:	Designer: XXXXXXXXX	Structure Numbers	X-XX-XX	Code			
							Detailer: XXXXXXXXX	X-XX-XX		Sheet Number				
							Void:	Sheet Subset: BRIDGE	Subset Sheets: BXX of XXX					



Staff Bridge Branch

Initials