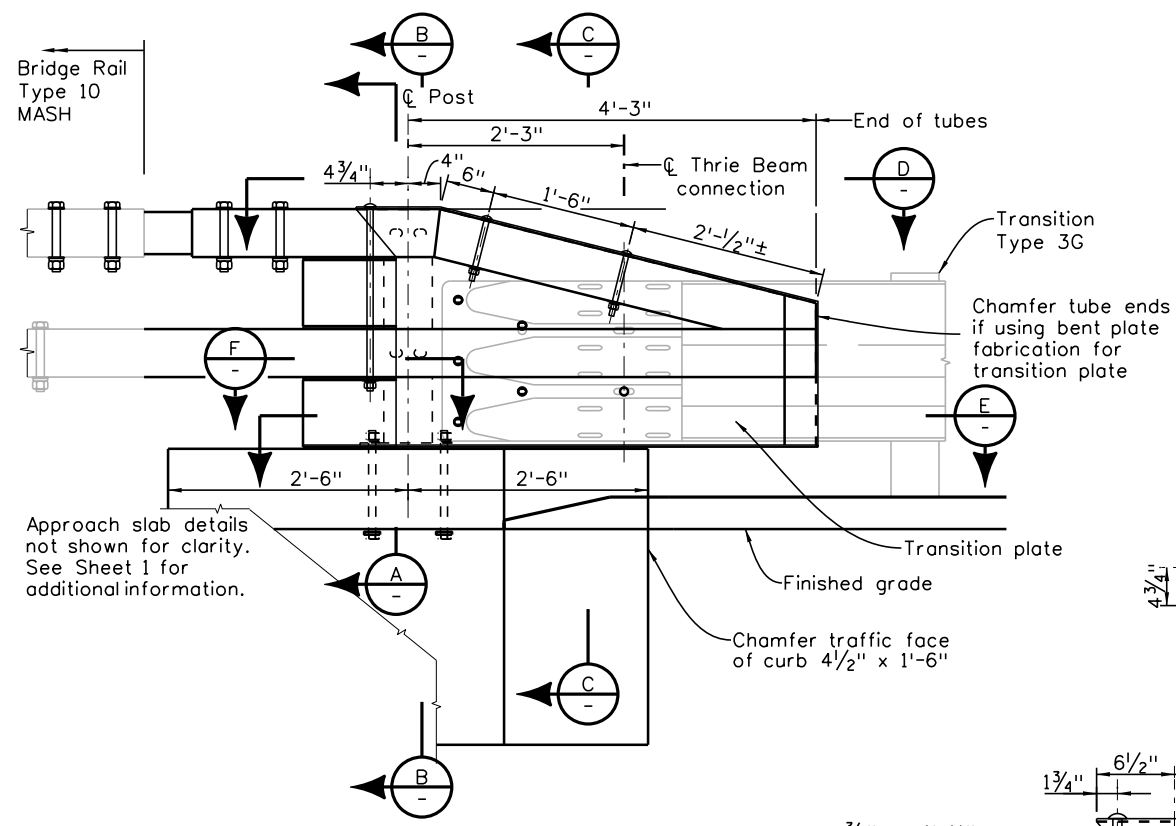


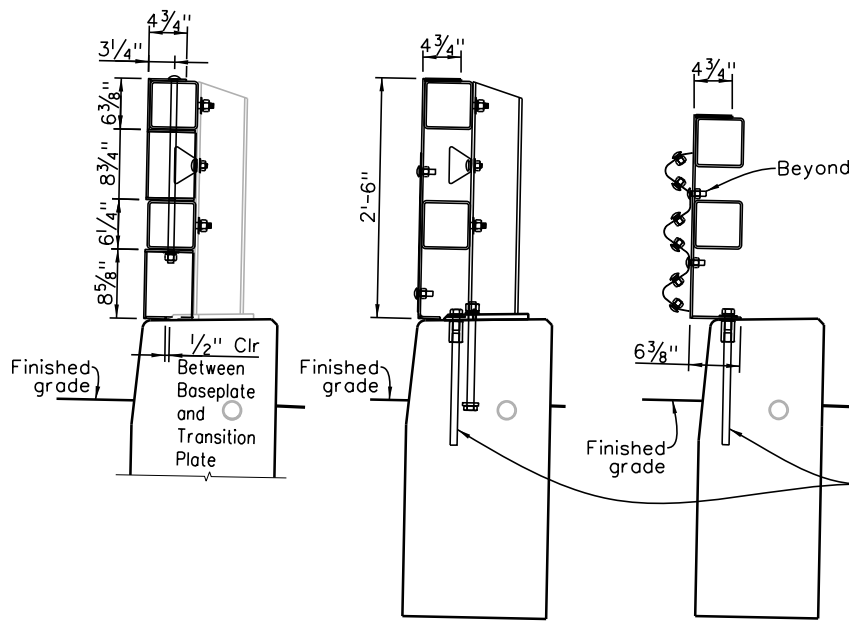
| | | | | | |
|-------|-------|------|------|------|-------|
| 12/19 | 12/19 | 1/20 | 3/23 | 9/24 | 11/25 |
| 12/19 | 12/19 | 1/20 | 3/23 | 9/24 | 11/25 |
| 12/19 | 12/19 | 1/20 | 3/23 | 9/24 | 11/25 |
| 12/19 | 12/19 | 1/20 | 3/23 | 9/24 | 11/25 |
| 12/19 | 12/19 | 1/20 | 3/23 | 9/24 | 11/25 |
| 12/19 | 12/19 | 1/20 | 3/23 | 9/24 | 11/25 |

| | | | | | | |
|------------|--------|------|--------|------|----------|------|
| INITIALS | DESIGN | DATE | DETAIL | DATE | QUANTITY | DATE |
| By | | | | | | |
| Checked By | | | | | | |

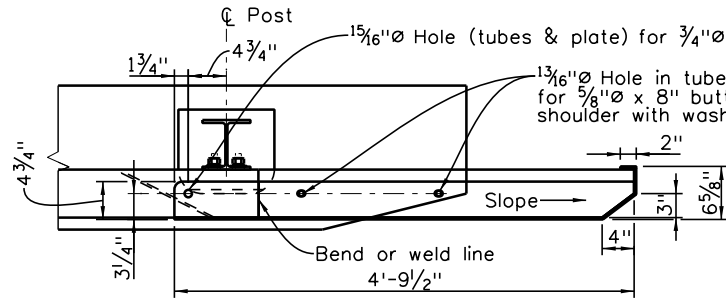


RAIL TUBE DETAILS

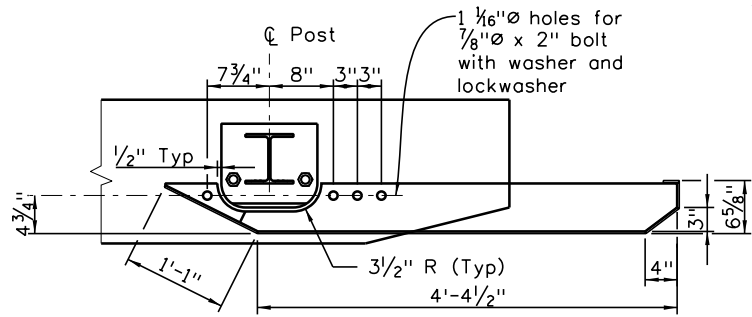
Note: Shaded linework is from other Pay Items



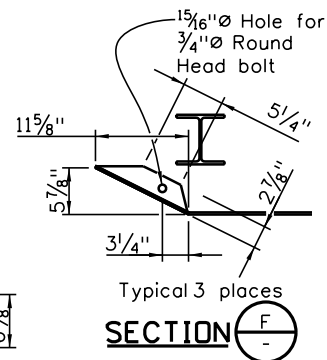
See Transition BR10M-GR3 Sheet 1 for Curb Details (Typ)



SECTION D

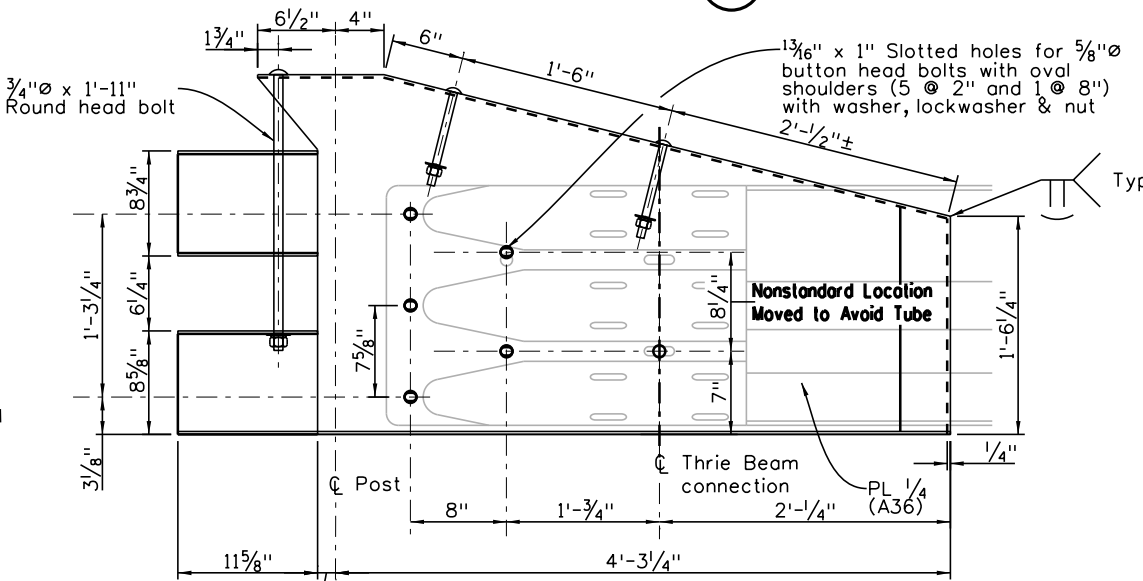
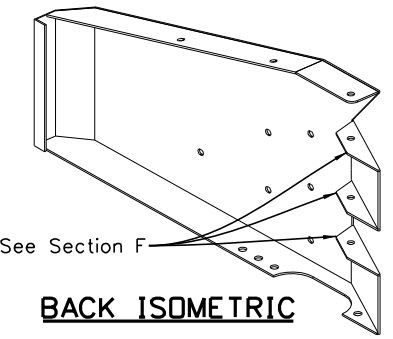
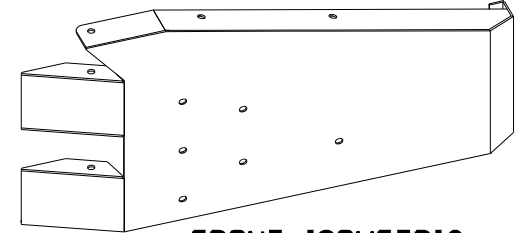


SECTION E

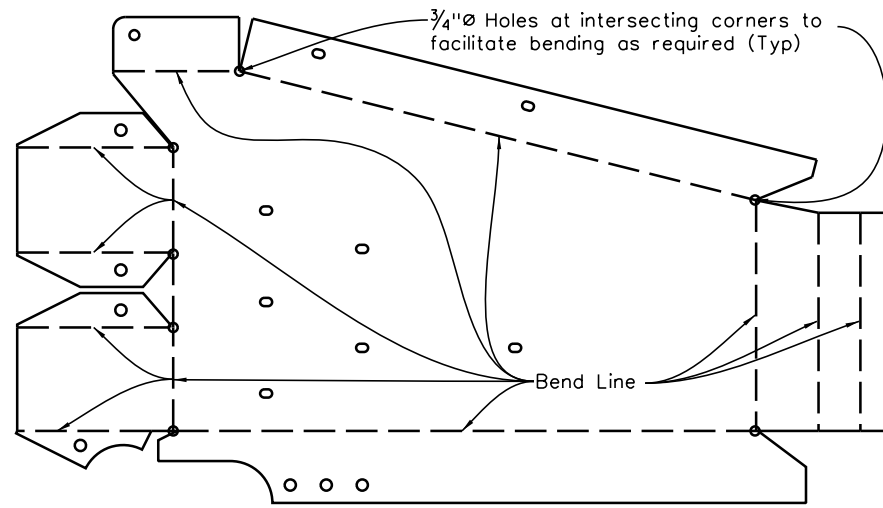


SECTION F

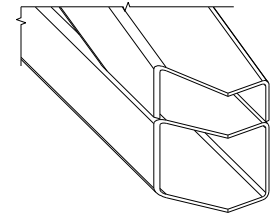
B-606-10MASH B
(Use with B-606-10MASH & 10MASH A or 10MASH A-S)



TRANSITION PLATE



CONCEPTUAL BEND DIAGRAM



NOTES:

1. See BXX (B-606-10MASH A/A-S) for payment details and quantities.
2. Shaded Linework is from other Pay Items.
3. Transition Plate may be fabricated with bent plates and/or welded construction. All welds shall be square root with convex contouring.
4. Verify location of Cover Plate holes based on supplied Thrie Beam Terminal Section (Connector).

All seals for this set of drawings are applied to the cover page(s)

Print Date: \$DATE\$
File Name: Sheet_B-606-10MASHB.dgn
Horiz. Scale: None Vert. Scale: As Noted
Unit Information Unit Leader Initials

| Sheet Revisions | | |
|-----------------|----------|-------|
| Date: | Comments | Init. |
| | | |
| | | |
| | | |

Colorado Department of Transportation

2829 West Howard Place, 3rd Floor
Denver, CO 80204
Phone: 303-512-4079
FAX: 303-757-9197

Staff Bridge Branch

Initials

| |
|----------------|
| As Constructed |
| No Revisions: |
| Revised: |
| Void: |

| TRANSITION TYPE BR10M-GR3 SHEET 2-TUBE AND PLATE DETAILS | | | |
|--|----------|-------------------|------------|
| Designer: | XXXXXXXX | Structure Numbers | X-XX-XX |
| Detailer: | XXXXXXXX | Structure Numbers | X-XX-XX |
| Sheet Subset: | BRIDGE | Subset Sheets: | BXX of XXX |

| Project No./Code | |
|------------------|------|
| Project Number | Code |
| Sheet Number | |