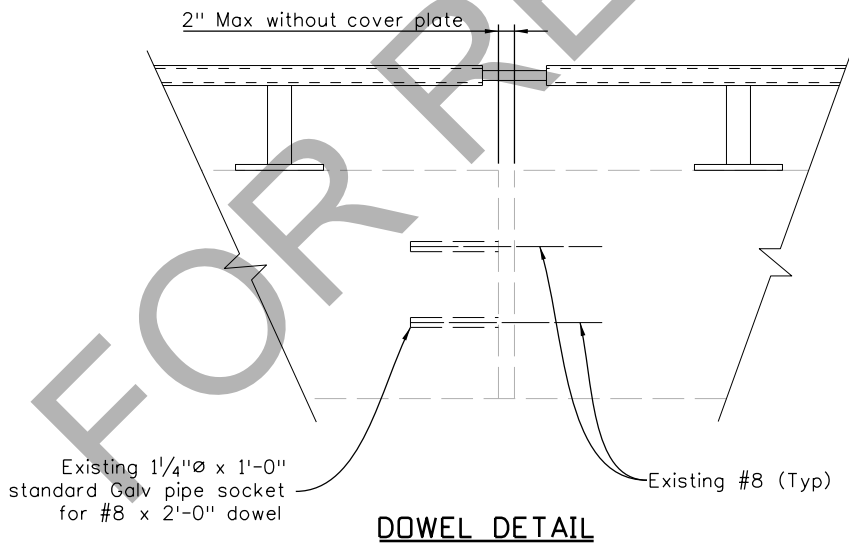
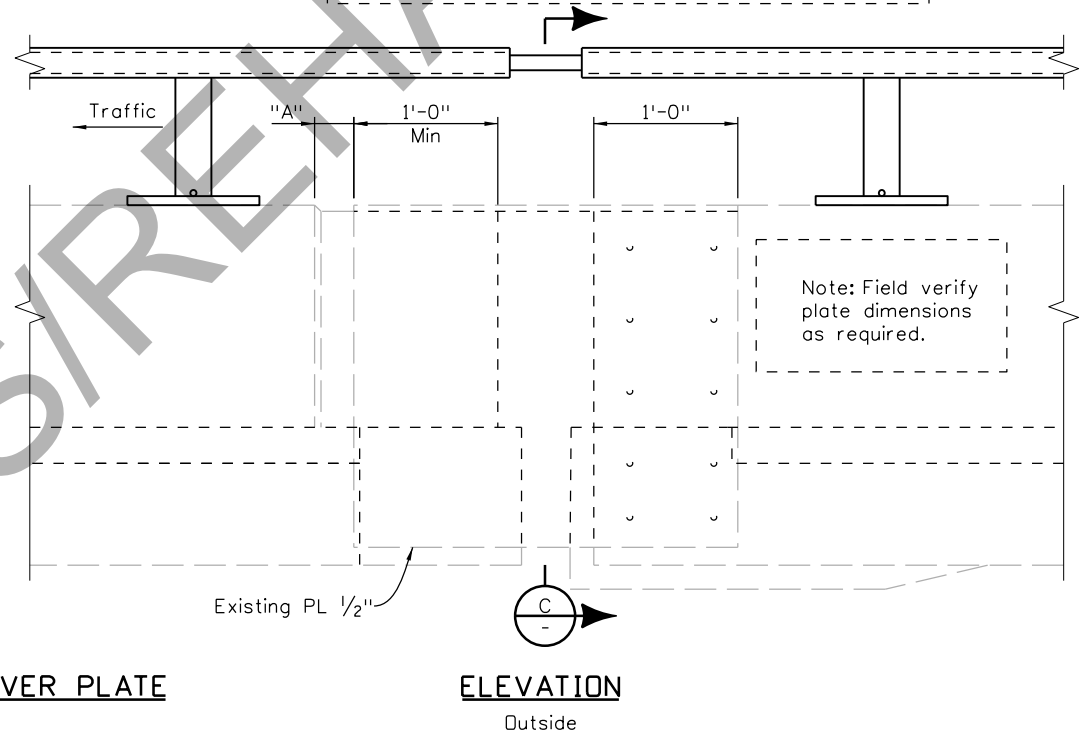
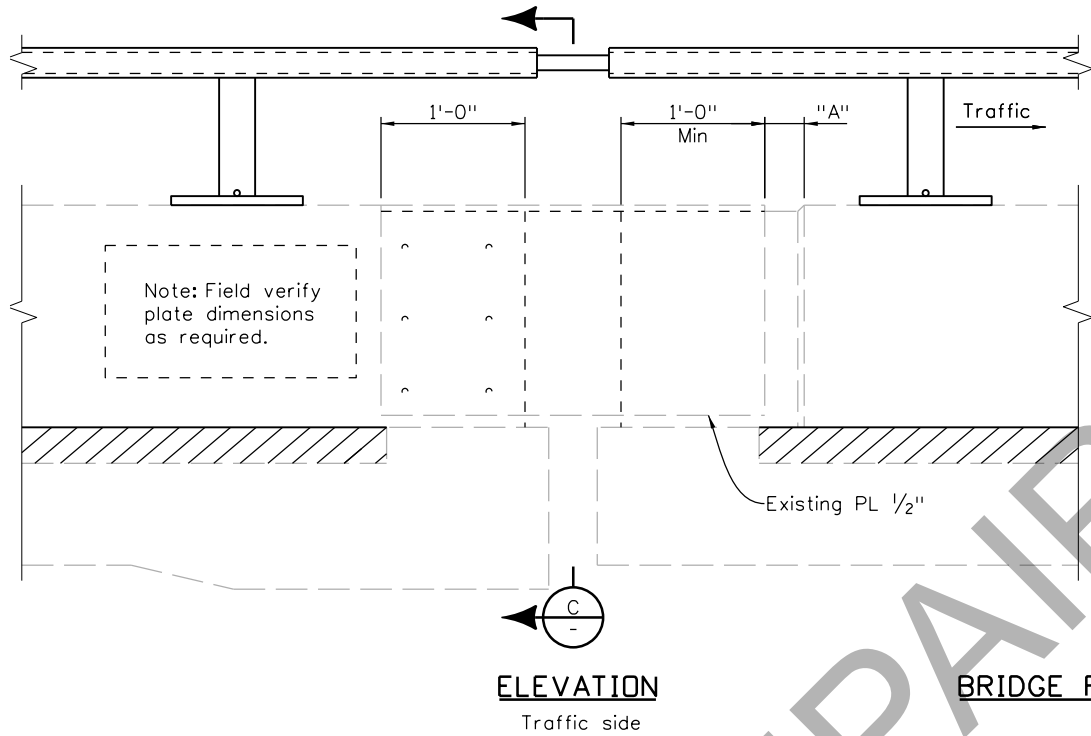
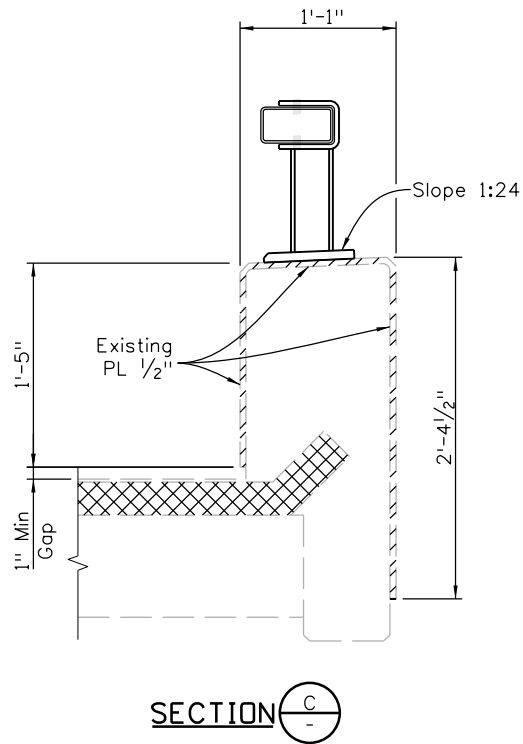


Revision Dates			
6/19	3/23	11/23	9/ 24

INITIALS	DESIGN	DATE	DETAIL	DATE	QUANTITY	DATE
By						
Checked By						

\$PLOT\_INFO\$



Designer:  
These barrier details have been MASH tested to TL-3 level only. No changes shall be made without approval.

These details are primarily intended for replacing Type 8 rail within Glenwood Canyon.

Provide plate dimensions and bolt locations if replacing plates. Use additional Pay Item.

**B-606-8RMASHB**  
(Use with  
B-606-8RMASHA)

- NOTES:**
- For "A" Dimension refer to BRIDGE RAIL TYPE 8R MASH (1 OF 2).

All seals for this set of drawings are applied to the cover page(s)	Print Date: \$DATE\$		<div></div> <div></div> <div></div> <div></div> <div></div>	Sheet Revisions			Colorado Department of Transportation		As Constructed	BRIDGE RAIL TYPE 8R MASH (2 OF 2)			Project No./Code		
	File Name: Sheet_B-606-8RMASHB.dgn			Date:	Comments		Init.	<div></div> <div>2829 West Howard Place, 3rd Floor Denver, CO 80204 Phone: 303-512-4079 FAX: 303-757-9197</div> <div>Staff Bridge Branch</div>	<div></div> <div>Initials</div>	No Revisions:	Designer: XXXXXXXX Detailer: XXXXXXXX Sheet Subset: BRIDGE Subset Sheets: BXX of XXX			Project Number	
	Horiz. Scale: None      Vert. Scale: As Noted						Revised:			Code					
	Unit Information      Unit Leader Initials						Void:			Sheet Number					