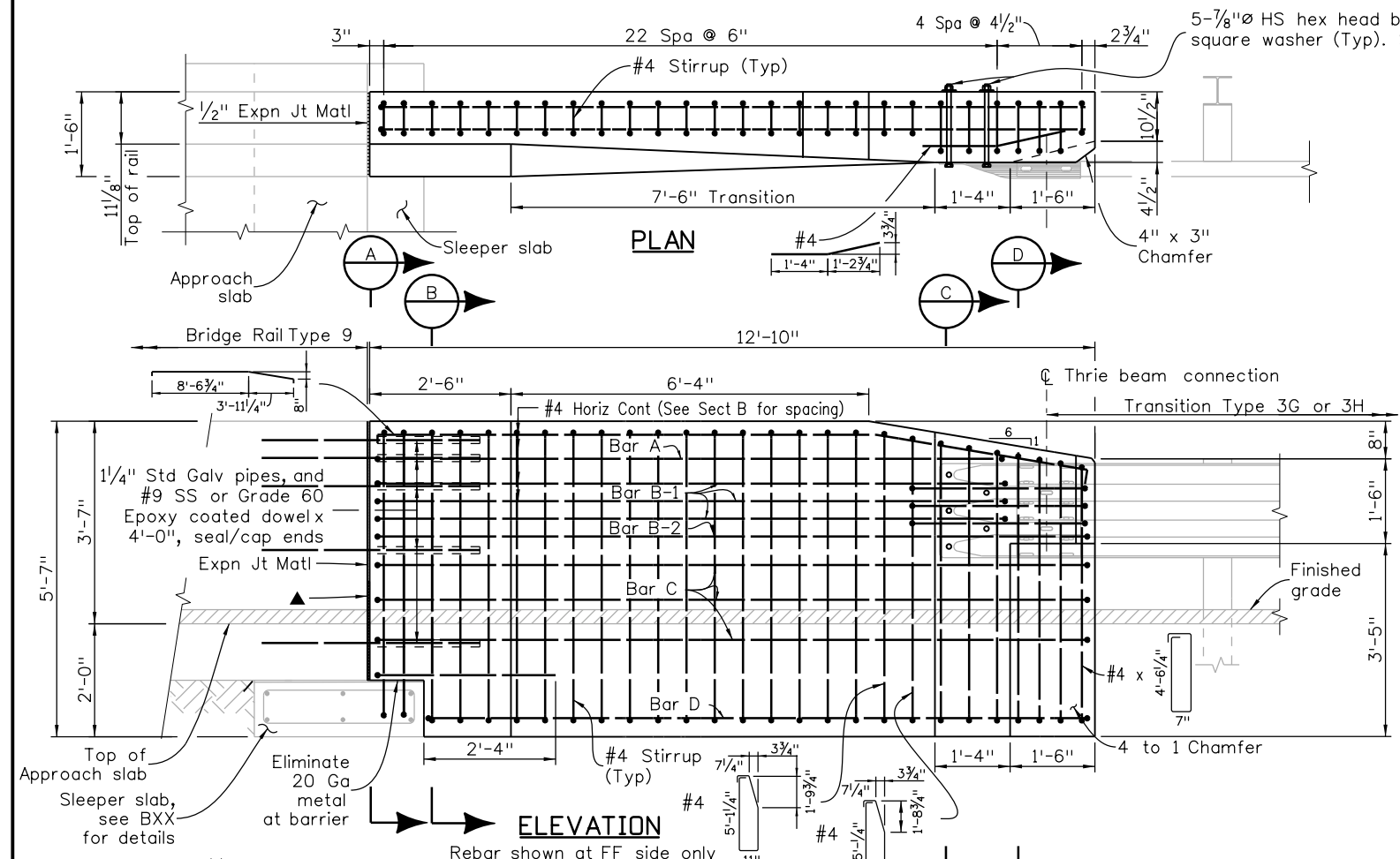


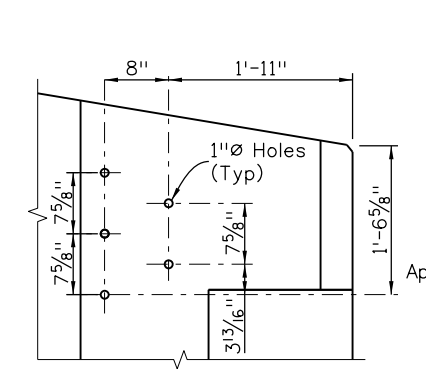
Revision Dates (Preliminary Stage Only)			
12/19	1/20	5/22	7/22
			3/23



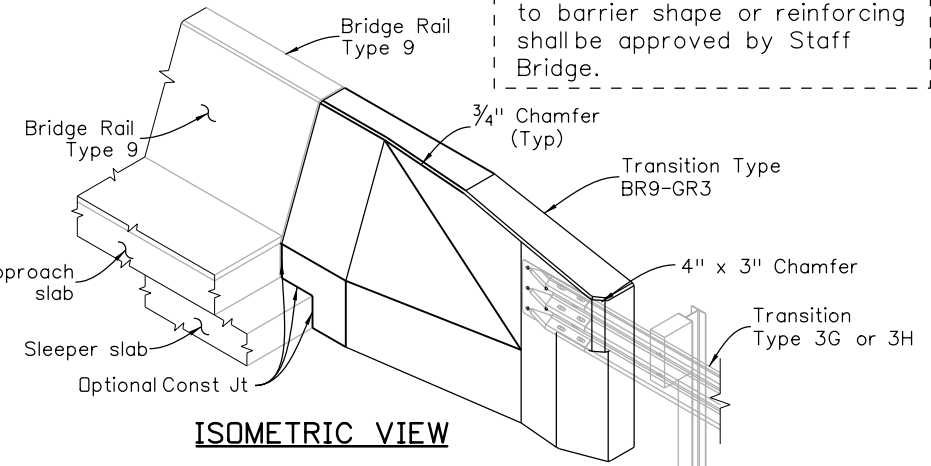
NOTES:

1. Payment will be made under item 606, Transition Type BR9-GR3, consisting of Concrete Class D with Macrofiber, reinforcing steel, standard galvanized pipes, dowels, concrete sealer, bolts, nuts, washers, and expansion joint material. The poured joint, expansion joint material, excavation and backfill will not be paid for separately, but shall be included in the work.
2. Transitions shall be constructed tapering perpendicular to bridge cross slope (bridge rail side) to plumb (3G/3H side). Vertical dimensions are perpendicular to the longitudinal roadway grade.
3. The top, end and inside face of the transition rail shall receive a coating conforming to Item 515, Concrete Sealer, compatible with the concrete coating/stain shown in the plans.
4. Concrete and reinforcing steel shall conform to the requirements of Sections 601 & 606 and 602 respectively unless otherwise noted.
5. All longitudinal reinforcement shall terminate with standard stirrup hooks as shown. Rotate or adjust reinforcing hooks to avoid interferences as required.
6. Rotate or adjust rebars at back face to avoid interference as required.

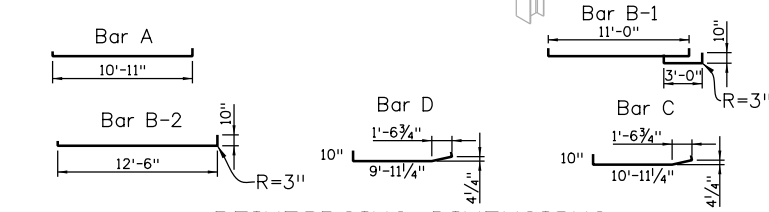
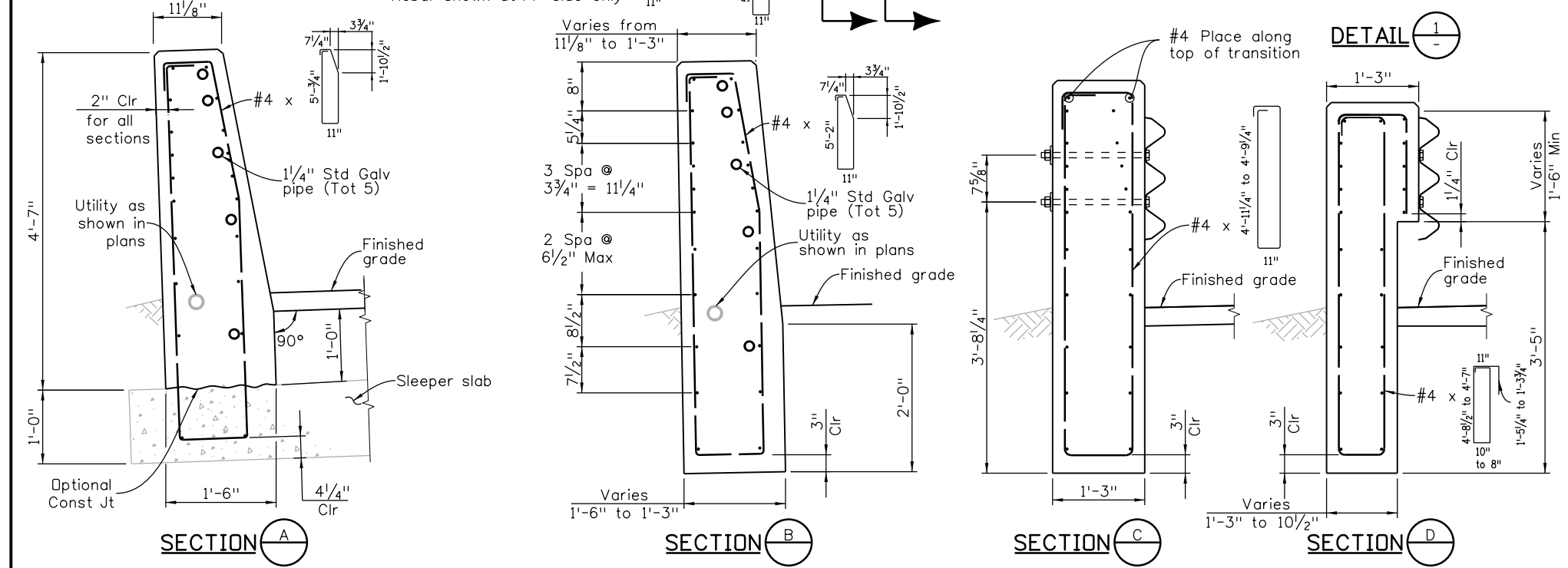
Designer/Detailer: Any changes to barrier shape or reinforcing shall be approved by Staff Bridge.



Note: Holes shall be cored through concrete or 1" inside diameter full depth inserts placed before concrete placement



ISOMETRIC VIEW



REINFORCING DIMENSIONS

DESIGN DATA:

Reinforcing Steel: $f_y = 60$ KSI Min
Concrete: Class D with Macrofiber $f'_c = 4.5$ KSI
All reinforcing bends shown shall use a 4D pin diameter.

INFORMATION ONLY

Description	Unit	Each
Structural Steel (Galvanized)	Lb	42
Concrete Sealer	SY	10.0
Concrete Class D with Macrofiber	CY	3.4
Reinforcing Steel (Epoxy Coated)	Lb	485

▲ 2" Deep poured joint filler, polysulfide or silicone sealant. Extend up to sidewalk and 6" up face of rail curb.

INITIALS	DESIGN	DATE	DETAIL	DATE	QUANTITY	DATE
By						
Checked By						

All seals for this set of drawings are applied to the cover page(s)

Print Date: \$DATE\$
File Name: Sheet_B-606-9D.dgn
Horiz. Scale: Not to Scale Vert. Scale: As Noted
Unit Information Unit Leader Initials

Sheet Revisions		
Date:	Comments	Init.

Colorado Department of Transportation
2829 West Howard Place, 3rd Floor
Denver, CO 80204
Phone: 303-512-5989
Phone: FAX: 303-757-9197

Staff Bridge Branch

As Constructed
No Revisions:
Revised:
Void:

TRANSITION TYPE BR9-GR3 SLEEPER VERSION			
Designer:	XXXXXXXX	Structure Numbers	X-XX-XX
Detailer:	XXXXXXXX	Structure Numbers	X-XX-XX
Sheet Subset:	BRIDGE	Subset Sheets:	BXX of XXX

Project No./Code
Project Number
Code
Sheet Number