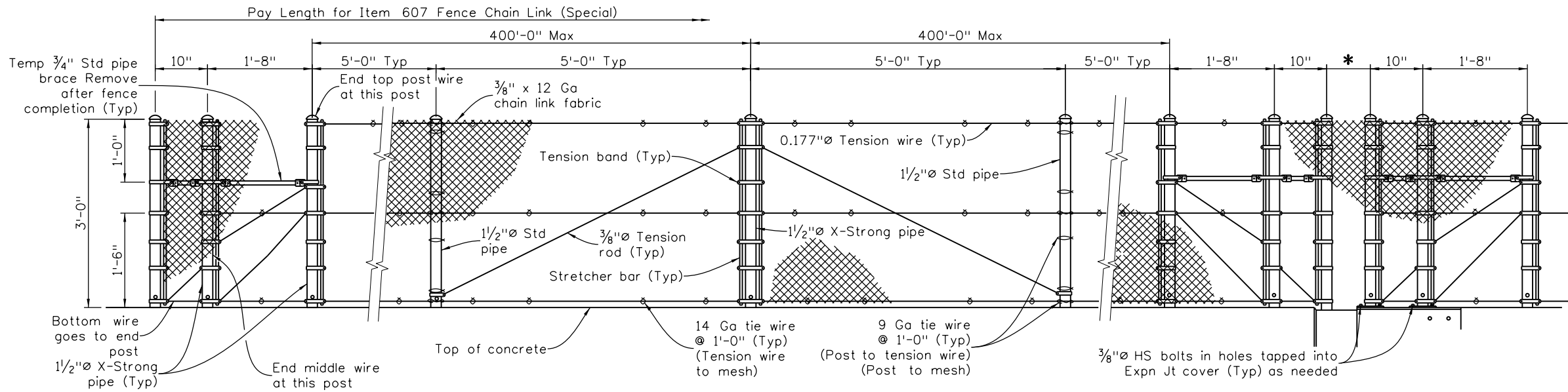


Revision Dates	9/24	10/13	3/07	4/02	11/99	3/99	8/95	8/94



END POSTS

LINE POST

BRACE POST

Spa @ 400' Max

LINE POST

END POSTS AT EXPANSION DEVICE

NOTES

- \* For Steel Bridges:  
Use 1/2" of rated joint motion +6", 8" Min. If not known, rated motion may be assumed to be 1/4" per 100' contributing to motion.
  - \* For Concrete Bridges:  
Use 1/4" of rated joint motion +6", 8" Min. If not known, rated motion may be assumed to be 1/4" per 100' contributing to motion.
- If \* exceeds 10", run mesh over gap with enough slack for 1/2" of rated expansion motion.

1. Anchorage assembly shall be galvanized after fabrication. If vinyl coating is specified, the fence assembly shall be galvanized and vinyl coated after fabrication. Anchorages shall be galvanized after fabrication.
2. Tension Rods and Wires shall have turnbuckles.
3. Posts shall be perpendicular to cross slope when used on type 9 Bridgerail.
4. Pipe shall conform to ASTM A53 Type E or S, Grade B.

DESIGN DATA

Test Tension = 5400 Lb  
Test with: Max Midbay deflection = 1/4" for  
Lateral Load of 160 Lb on 1 SF  
1'-6" up at center of bay.

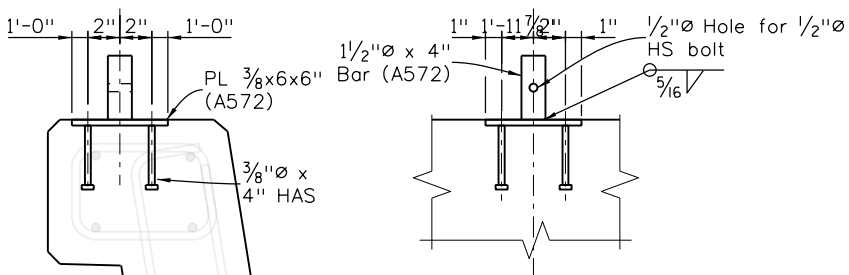
Live Load: wind load = 32 psf  
or snow impact load = 96 plf at 1'-6" up

Structural Steel: Pipe fy = 35,000 psi  
ASTM A572 (GR 50) fy = 50,000 psi

Standard Color Vinyl Coatings over Galvanized Wire	Munsell Color System No. (as per ASTM)
Galvanized Only	
Brown	7YR 2.4/1.75
Green	8.8G 2.63/5.8
Black	1.8PB 1.26/0.5

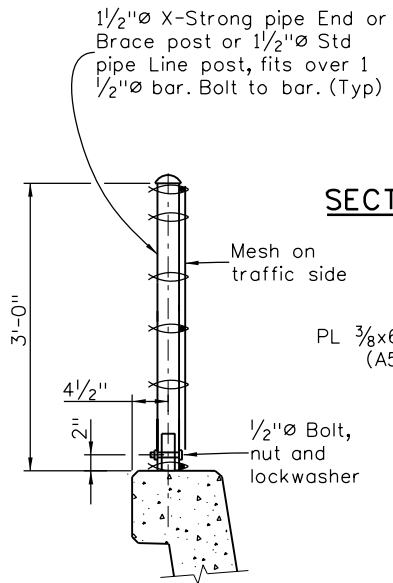
Special Color Vinyl Coatings over Galvanized Wire	Federal Color No	Munsell Color System No

If the specific color of coating is not marked and the Federal Color No or the Munsell Color System No is not given, vinyl coating is not required.

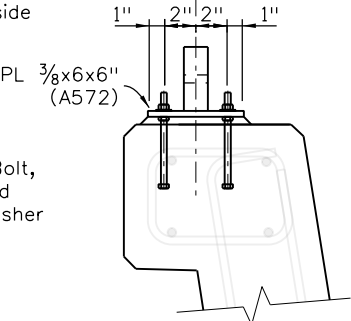


SECTION ALT 2

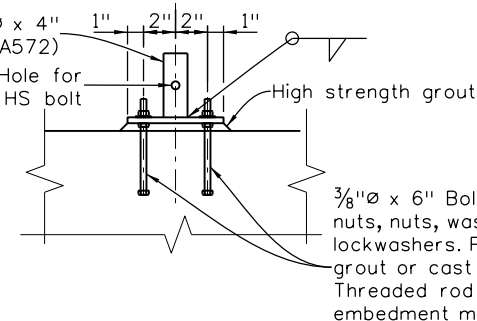
ELEVATION ALT 2



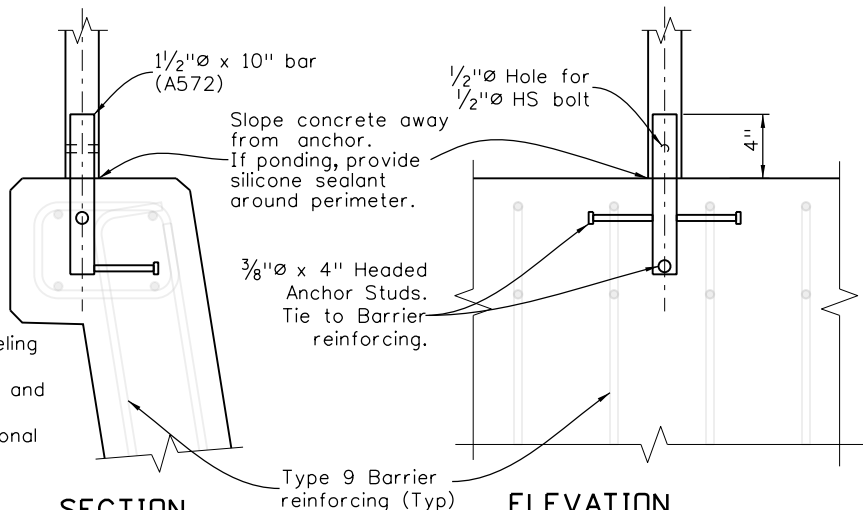
TYPICAL SECTION



SECTION ALT 1



ELEVATION ALT 1



SECTION

ANCHORAGE DETAIL

ELEVATION

INITIALS	DESIGN	DATE	DETAIL	DATE	QUANTITY	DATE
By						
Checked By						

ALTERNATE ANCHORAGE DETAILS

All Elevations: Post position and/or Barrier reinforcing may be adjusted longitudinally for fit.

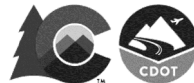
All seals for this set of drawings are applied to the cover page(s)

Print Date: \$DATE\$
File Name: Sheet_B-607-3.dgn
Horiz. Scale: None Vert. Scale: As Noted
Unit Information Unit Leader Initials

Sheet Revisions

Date:	Comments	Init.

Colorado Department of Transportation



2829 West Howard Place, 3rd Floor  
Denver, CO 80204  
Phone: 303-512-4079  
FAX: 303-757-9197

Staff Bridge Branch

Initials

As Constructed

No Revisions:

Revised:

Void:

FENCE CHAIN LINK (SPECIAL)  
(36-INCH SPLASH GUARD)

Designer: XXXXXXXX

Detailer: XXXXXXXX

Sheet Subset: BRIDGE

Structure Numbers

Subset Sheets: BXX of XXX

X-XX-XX  
X-XX-XX

Project No./Code

Project Number

Code

Sheet Number