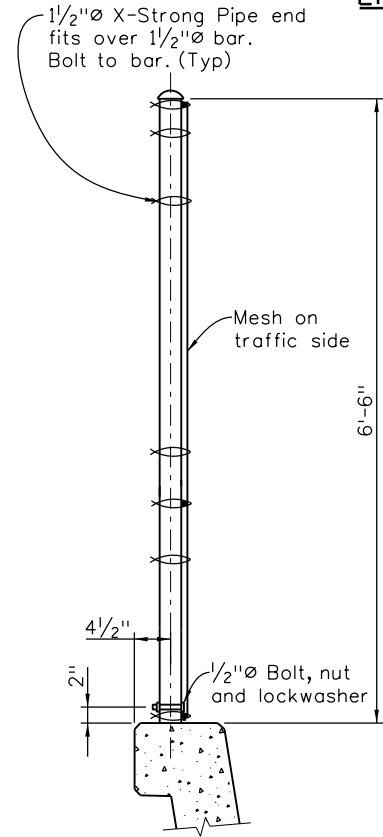
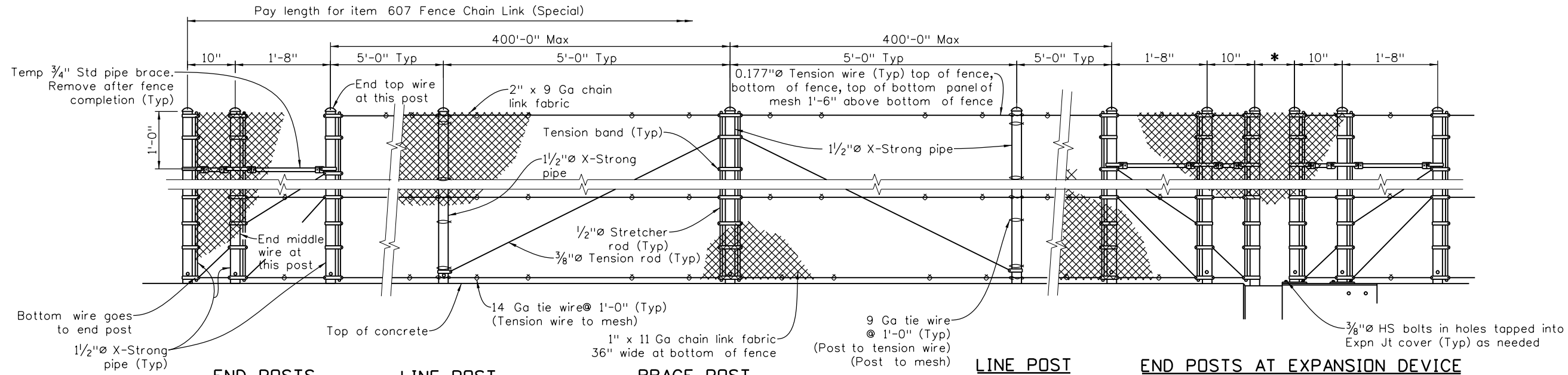
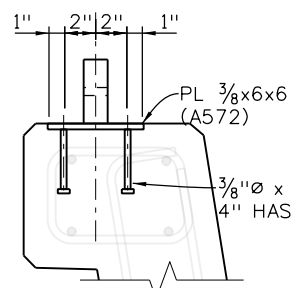


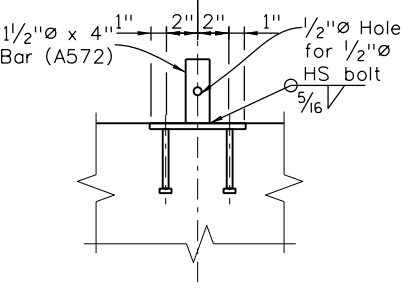
Revision Dates
9/ 24
3/23
10/13
3/07
6/04



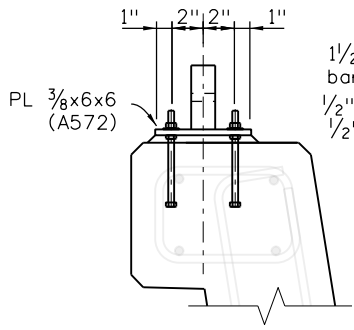
TYPICAL SECTION



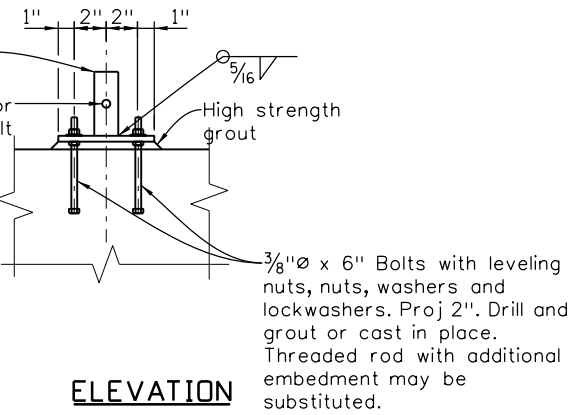
SECTION



ELEVATION



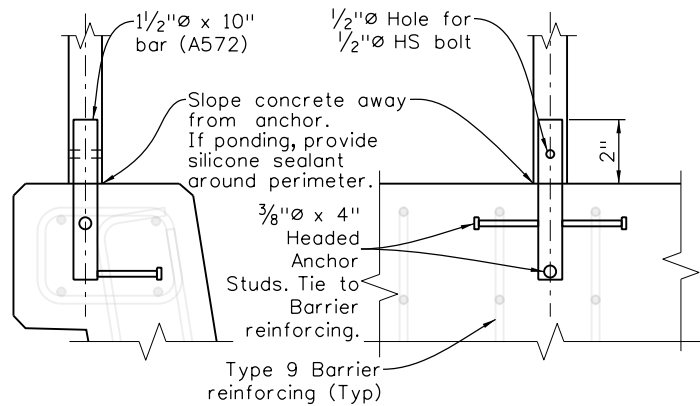
SECTION



ELEVATION

ALTERNATE ANCHORAGE DETAILS

- \* For Steel Bridges:  
Use 7/16 of rated joint motion +6", 8" Min. If not known, rated motion may be assumed to be 1/4" per 100' contributing to motion.
- \* For Concrete Bridges:  
Use 1/4 of rated joint motion +6", 8" Min. If not known, rated motion may be assumed to be 1/4" per 100' contributing to motion. If \* exceeds 10", run mesh over gap with enough slack for 1/2 of rated expansion motion.



SECTION

ELEVATION

ANCHORAGE DETAIL

NOTES

1. Anchorage assembly shall be galvanized after fabrication. If vinyl coating is specified, the fence assembly shall be galvanized and vinyl coated after fabrication. Anchorages shall be galvanized after fabrication.
2. Tension rods and wires shall have turnbuckles.
3. Posts shall be vertical.
4. Pipe shall conform to ASTM A53 Type E or S, Grade B.

DESIGN DATA

Test Tension = 5400 Lb  
Test with: Max Midbay deflection = 1/4" for  
Lateral Load of 160 Lb on 1 SF  
1'-6" up @ center of bay

Live Load: wind load = 32 psf 3/8" mesh  
wind load = 11 psf 1" mesh  
wind load = 6 psf 2" mesh  
or snow impact load = 96 plf @ 1'-6" up

Structural Steel: Pipe fy = 35,000 psi  
ASTM A572 (GR 50) fy = 50,000 psi

Standard Color Vinyl Coatings over Galvanized Wire	Munsell Color System No. (as per ASTM)
Galvanized Only	None
Brown	7YR 2.4/1.75
Green	8.8G 2.63/5.8
Black	1.8PB 1.26/0.5

Special Color Vinyl Coatings over Galvanized Wire	<input type="checkbox"/> Federal Color No	<input type="checkbox"/> Munsell Color System No

If the specific color of coating is not marked and the Federal Color No or the Munsell Color System No is not given, vinyl coating is not required.

INITIALS	DESIGN	DATE	DETAIL	DATE	QUANTITY	DATE
By						
Checked By						

\$PLOT\_INFO\$

All seals for this set of drawings are applied to the cover page(s)	Print Date: \$DATE\$		<div></div> <div></div> <div></div> <div></div> <div></div>	Sheet Revisions			<div><div><div></div></div><div><div></div></div></div> <div>2829 West Howard Place, 3rd Floor Denver, CO 80204 Phone: 303-512-4079 FAX: 303-757-9197</div> <div>Staff Bridge Branch<div>Initials</div></div>	As Constructed		FENCE CHAIN (SPECIAL) (78 INCH)				Project No./Code	
	File Name: Sheet_B-607-778.dgn			Date:	Comments	Init.		No Revisions:				Project Number			
	Horiz. Scale: None      Vert. Scale: As Noted							Revised:		Designer:    XXXXXXXX	Structure Numbers	X-XX-XX	Code		
	Unit Information                      Unit Leader Initials							Void:		Detailer:      XXXXXXXX		X-XX-XX			
										Sheet Subset:    BRIDGE	Subset Sheets: BXX of XXX		Sheet Number		