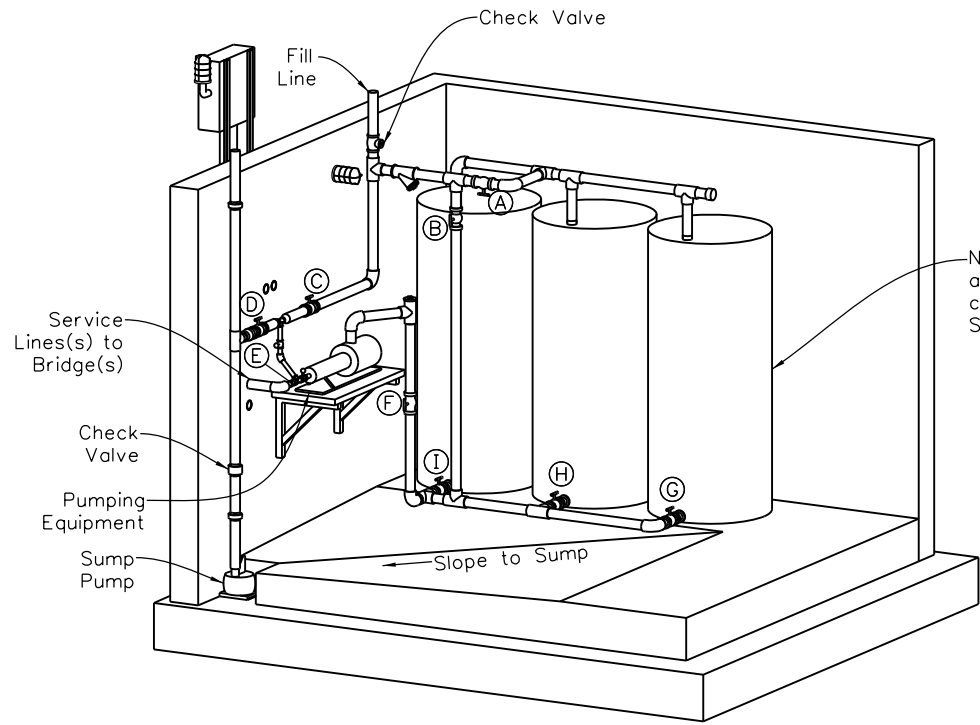


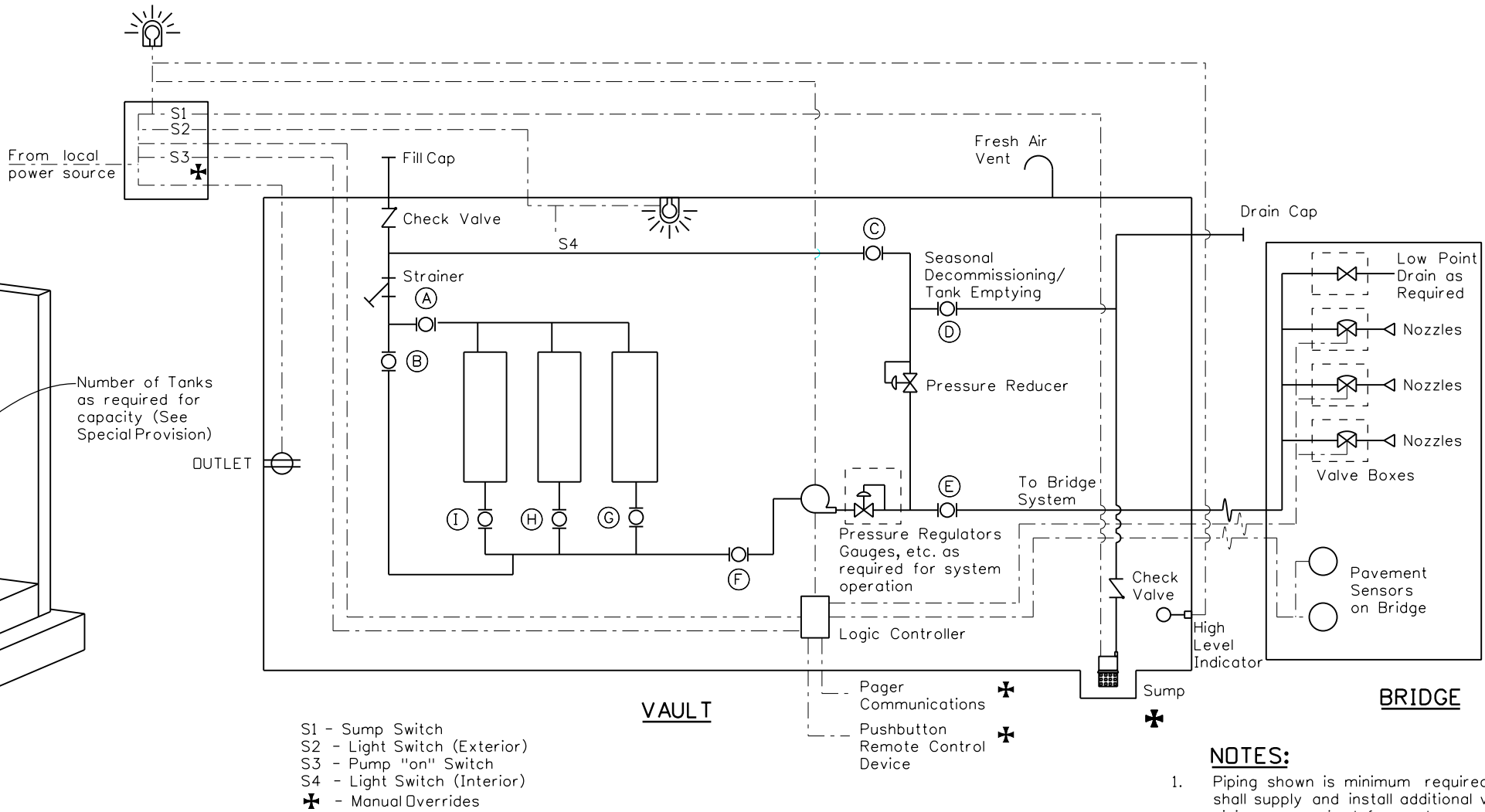
Revised	By	Date
2/06		3/07
3/23		10/13
9/24		3/24

Initials	Design	Date	Detail	Date	Quantity	Date
By						
Checked By						

DESIGNER/DETAILER:
Tanks that fit through 3' roof opening have a 220 gallon capacity. Max capacity for current layout is 1320 gallons (6 tanks).
Drawings for all 4 cases are complete and annotated in the Linework model. Activate only the desired case.
DO NOT MOVE MODELS.
Revise general specification and drawings for capacity required.



VAULT ISOMETRIC VIEW



SYSTEM SCHEMATIC

- NOTES:**
- Piping shown is minimum required. Contractor shall supply and install additional valves and piping as required for system operation, testing and specification requirements.
 - An overpressure line is not shown in the schematic but shall be provided.

VALVE DESIGNATION AND OPERATION CONFIGURATION									
OPERATION	(A)	(B)	(C)	(D)	(E)	(F)	(G)	(H)	(I)
BRIDGE ANTI-ICING	OPEN	CLOSED	CLOSED	CLOSED	OPEN	OPEN	THESE VALVES SHALL REMAIN OPEN EXCEPT DURING TANK REPLACEMENT AND WHEN FLUSHING THE SYSTEM.		
TANK FILLING (BOTTOM)	CLOSED	OPEN	CLOSED	CLOSED	OPEN*	CLOSED			
TANK FILLING (TOP)	OPEN	CLOSED	CLOSED	CLOSED	OPEN*	OPEN*			
TANK RECIRCULATION	OPEN	CLOSED	OPEN	CLOSED	CLOSED	OPEN			
EMPTYING TANKS	OPEN	CLOSED	CLOSED	OPEN	CLOSED	OPEN			
SUMP DISCHARGE	OPEN*	CLOSED*	CLOSED*	CLOSED	OPEN*	OPEN*			

* Normal Anti-Icing Position is shown (Preferred Position). Valve may be opened or closed for this operation.

All seals for this set of drawings are applied to the cover page(s)

Print Date: \$DATE\$
File Name: Sheet_B-614-2.dgn
Horiz. Scale: None Vert. Scale: As Noted
Unit Information Unit Leader Initials

Sheet Revisions

Date:	Comments	Init.

Colorado Department of Transportation

2829 West Howard Place, 3rd Floor
Denver, CO 80204
Phone: 303-512-4079
FAX: 303-757-9197

Staff Bridge Branch

As Constructed

No Revisions:

Revised:

Void:

ANTI-ICING SYSTEM
SYSTEM SCHEMATIC

Designer: XXXXXXXX
Detailer: XXXXXXXX
Sheet Subset: BRIDGE

Structure Numbers: X-XX-XX
X-XX-XX
Subset Sheets: BXX of XXX

Project No./Code

Project Number

Code

Sheet Number