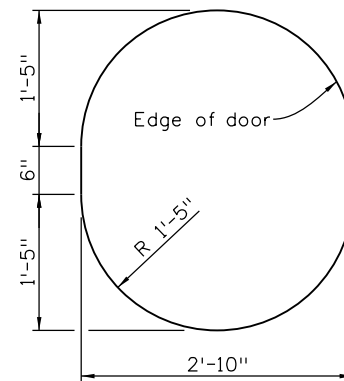
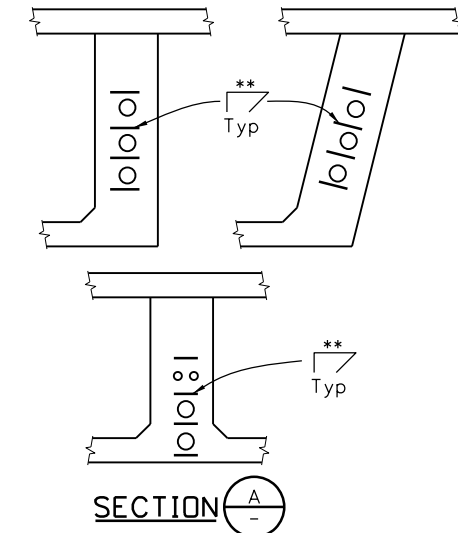


INITIALS	DESIGN	DATE	DETAIL	DATE	QUANTITY	DATE
By						
Checked By						

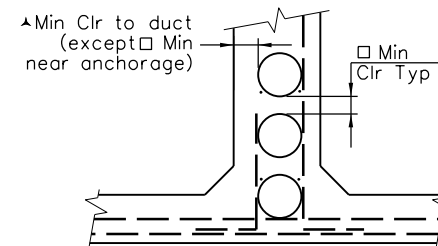


1. See abutment details and superstructure details for dimensions and reinforcing not shown.
2. Prior to welding, grind galvanizing from frame, where the hasp or hinge attaches. After welding, paint the weld and surrounding areas with zinc rich paint meeting Military Specifications DDD-P-21035A.
3. Attach door with 4-1/4"Ø zinc plated bolts with countersunk heads. Use double nuts; burr threads after tightening. Attach hasp staple in a similar manner. Leave door open while pouring the bottom slab.
4. Paint door with zinc rich paint, meeting the above specification after welding.



The webs shall be flared near the anchorage as required to maintain a 1½" Min cover over the ducts and a 1" Min cover over the stirrups. The flare may be on one side only for exterior girder webs. Provide \*\* ties above, below, and between each row of ducts, tie to five stirrups at beginning of web flare.

PLAN VIEW OF DUCTS AT GIRDER WEB FLARE




▲ = 0.75 Duct diameter Min clearance to duct, or 3" Min  
□ = 0.44 Duct diameter Min clearance between ducts, or 1½" Min

Designer/Detailer		
Jacking force per duct	** No of stirrups per layer & size	Min duct radius*
0 to 308 Kip	2 - #3	83 Ft
308 to 527 Kip	4 - #3	142 Ft
527 to 835 Kip	4 - #4	225 Ft
835 to 1186 Kip	6 - #4	320 Ft

```

1 * For curved webs and ducts greater than 4"
1 diameter use # 3 ** bars @ 14" Max spacing
1 for the full length of curved webs.
1 For tighter radii than shown, a custom duct
1 spacing greater than the □ Min shown and
1 more ** reinforcing must be designed.
1 See B-618-7

```

All seals for this set of drawings are applied to the cover page(s)	Print Date: \$DATES\$	<div><div></div><div></div><div></div><div></div><div></div></div>	Sheet Revisions			Colorado Department of Transportation		As Constructed		CAST-IN-PLACE POST-TENSIONED BOX GIRDER DETAILS				Project No./Code	
	File Name: Sheet_B-618-2.dgn		Date:	Comments	Init.	<div><div></div><div>2829 West Howard Place, 3rd Floor Denver, CO 80204 Phone: 303-512-4079 FAX: 303-757-9197</div><div>Staff Bridge Branch</div></div> <div>Initials</div>	No Revisions:						Project Number		
	Horiz. Scale: None      Vert. Scale: As Noted						Revised:						Designer:    XXXXXXXX    Structure Numbers    X-XX-XX		Code
	Unit Information      Unit Leader Initials						Void:		Detailer:    XXXXXXXX                                       X-XX-XX		Sheet Number				
									Sheet Subset:    BRIDGE    Subset Sheets: BXX of XXX						