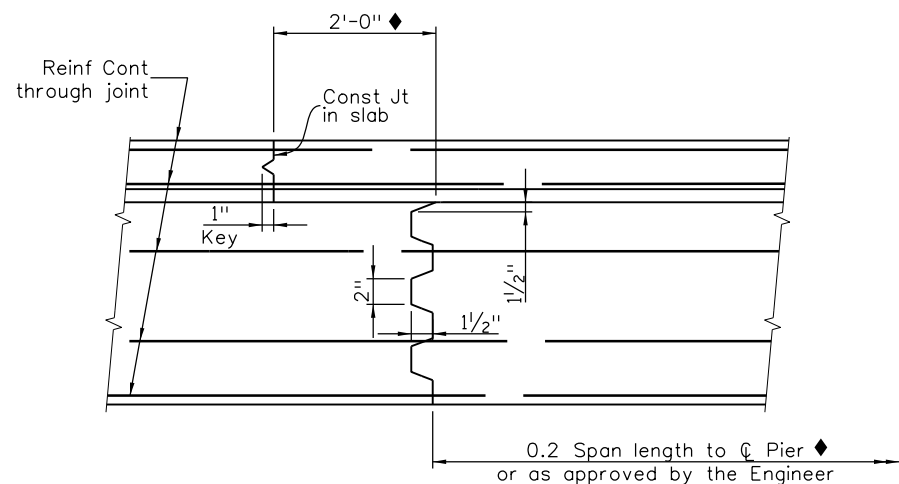
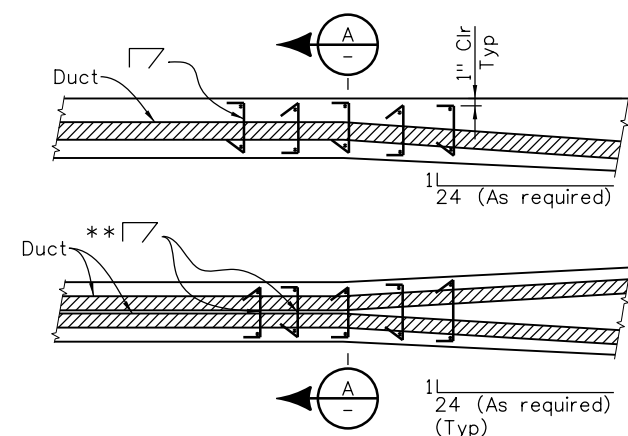


B-618-5

(use with B-618-4 and B-618-6; also add B-618-7 when horizontal curve is present.)

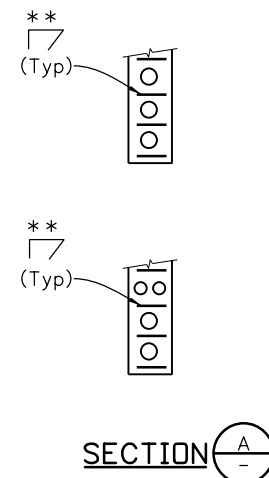


TRANSVERSE GIRDER CONSTRUCTION JOINT



The webs shall be flared near the anchorage as required to maintain a 1/2" Min cover over the ducts and a 1" Min cover over the stirrups. The flare may be on one side only for exterior girder webs. Provide ** ties above, below, and between each row of ducts, tie to five stirrups at beginning of web flare.

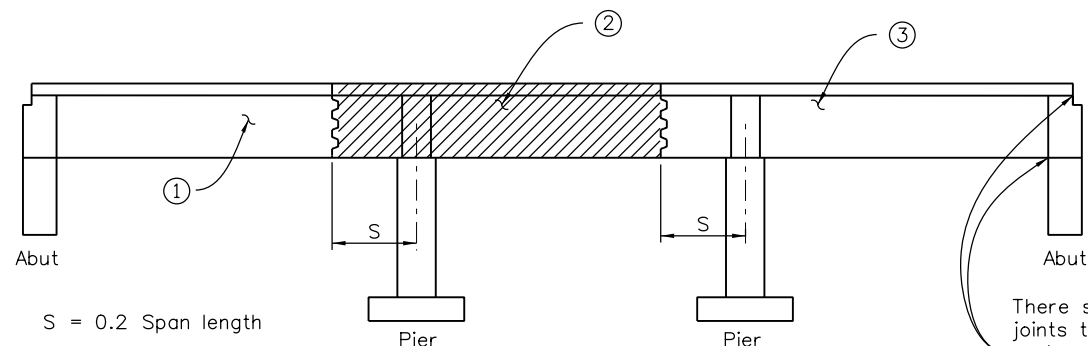
PLAN VIEW OF DUCTS AT GIRDER WEB FLARE



SECTION A-A

NOTES:

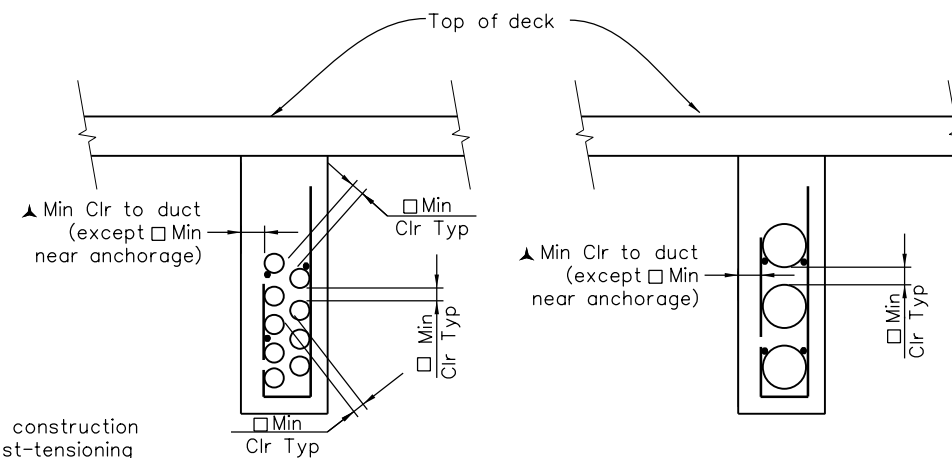
- See Abutment Details and Superstructure Details for dimensions and reinforcing steel not shown.



SUPERSTRUCTURE PLACING SCHEDULE

Numbers ①, ②, and ③ indicate sequence of placing slab and girder concrete when each section constitutes a separate pour. They may be placed continuously or in parts, as indicated above and as approved by the Engineer. Contractor may submit an alternate placing schedule to the Engineer for approval.

◆ Except when staged construction requires alternate joint locations.



PATTERN 1
PATTERN 2
CLEARANCE REQUIREMENTS FOR DUCTS

▲ = 0.75 Duct diameter Min clearance to duct, or 3" Min
□ = 0.44 Duct diameter Min clearance between ducts, or 1/2" Min

Designer/Detailer:

Jacking force per duct	** No of stirrups per layer & size	Min duct radius *
0 to 308 Kip	2 - #3	83 Ft
308 to 527 Kip	4 - #3	142 Ft
527 to 835 Kip	4 - #4	225 Ft
835 to 1186 Kip	6 - #4	320 Ft

* For curved webs and ducts greater than 4" diameter, use #3 ** bars @ 14" Max spacing for the full length of curved webs. For tighter radii than shown, a custom duct spacing greater than the □ Min shown and more ** reinforcing must be designed, see B-618-7. The above requirements only address localized bursting. In addition to the above, lateral bending must be checked when there is any horizontal web curvature.

Revision Dates	(Preliminary Stage Only)	3/07	10/13	3/23
8/99	8/99	5/99	11/99	9/02
8/99	8/99	5/99	11/99	9/02

INITIALS	DESIGN	DATE	DETAIL	DATE	QUANTITY	DATE
By						
Checked By						

All seals for this set of drawings are applied to the cover page(s)	Print Date: \$DATE\$	Sheet Revisions			Colorado Department of Transportation				As Constructed		CAST-IN-PLACE POST-TENSIONED T-GIRDER DETAILS				Project No./Code		
	File Name: Sheet_B-618-5.dgn	Date:	Comments	Init.	2829 West Howard Place, 3rd Floor Denver, CO 80204 Phone: 303-512-4079 FAX: 303-757-9197				No Revisions:		Designer: XXXXXXXX		Structure: X-XX-XX		Project Number		
	Horiz. Scale: Not to Scale Vert. Scale: As Noted	Unit Information		Unit Leader Initials					Revised:		Detailer: XXXXXXXX		Numbers: X-XX-XX		Code		
	Unit Information		Unit Leader Initials						Void:		Sheet Subset: BRIDGE		Subset Sheets: BXX of XXX		Sheet Number		
						Staff Bridge Branch		Initials									