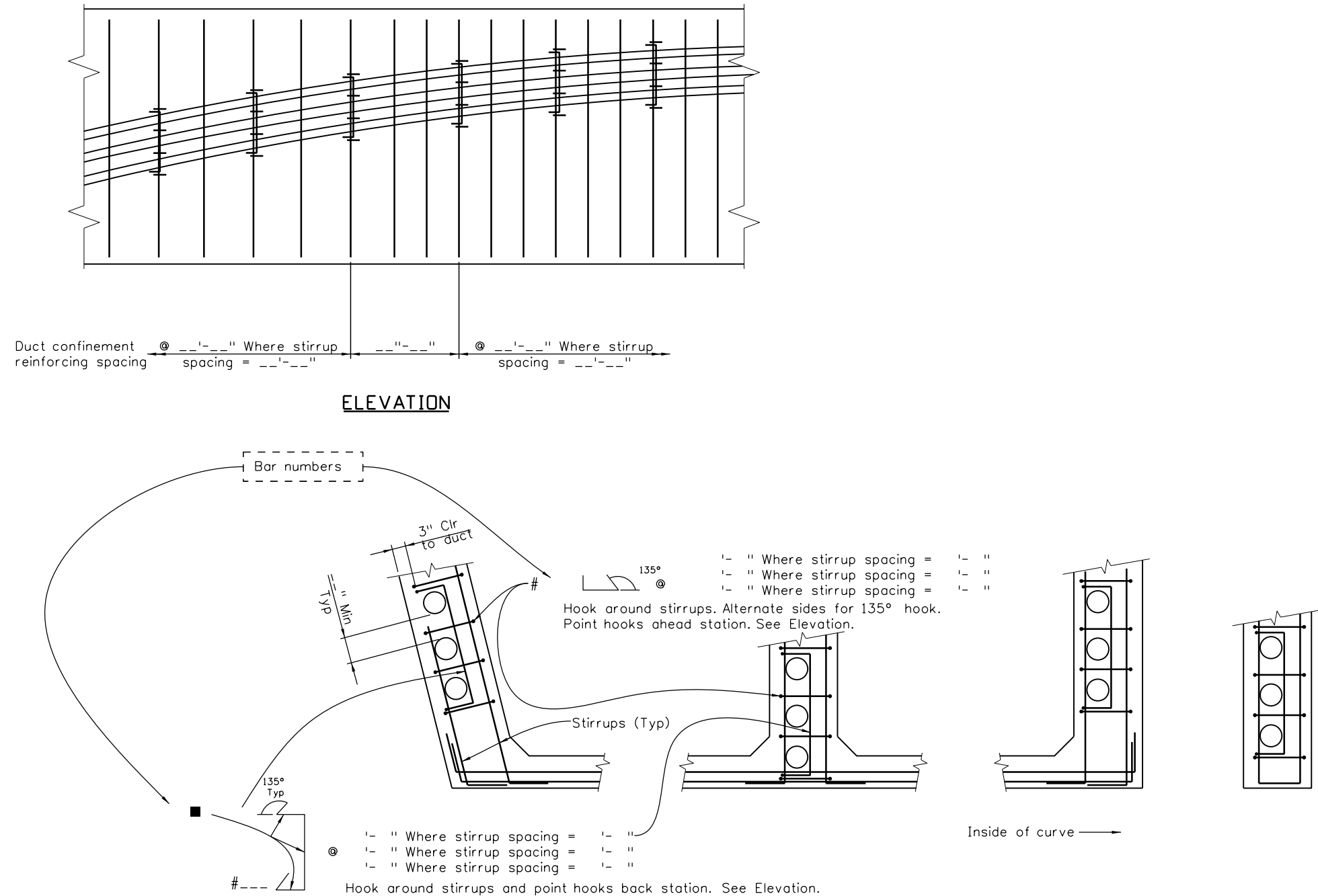


Revision Dates						
8/94	3/99	11/99	4/02	3/07	10/13	3/23 9/24

INITIALS	DESIGN	DATE	DETAIL	DATE	QUANTITY	DATE
By						
Checked By						



PART GIRDER SECTION FROM STA. \_\_\_\_\_+\_\_\_\_\_ TO STA. \_\_\_\_\_+\_\_\_\_\_.

Details shown are for a curve to the right with the section taken looking ahead station.  
The weight of duct confinement reinforcing is included in the quantities paid by Item No. 602, Reinforcing Steel.  
Use the 90° standard hook length (#4=8", #5=10") for the 135° hook length.  
■ Dimensions are dependent on the post-tensioning system the Contractor has selected. See final, Engineer reviewed shop drawings for duct size and spacing.

All seals for this set of drawings are applied to the cover page(s)	Print Date: \$DATE\$		Sheet Revisions		Colorado Department of Transportation 2829 West Howard Place, 3rd Floor Denver, CO 80204 Phone: 303-512-4079 FAX: 303-757-9197  Staff Bridge Branch	As Constructed		HOIRZONTALLY CURVED CAST-IN-PLACE POST-TENSIONED GIRDER DETAILS			Project No./Code	
	File Name: Sheet_B-618-7.dgn		Date:	Comments		Init.	No Revisions:				Project Number	
	Horiz. Scale: None      Vert. Scale: As Noted						Revised:	Designer:    XXXXXXXX	Structure Numbers	X-XX-XX	Code	
	Unit Information      Unit Leader Initials							Detailer:    XXXXXXXX		X-XX-XX		
							Void:	Sheet Subset:    BRIDGE	Subset Sheets: BXX of XXX		Sheet Number	