

Colorado Historic Highway Inventory - Historical Summary and Evaluation of Significance

Highway Name: State Highway (SH) 58

CDOT Route Nos. and Milepost (MP) Limits:

<i>CDOT Route</i>	<i>Route Description</i>
058A	From U.S. 6-G and 93-A West of Golden East To a Direct Connection Flyover onto I 70-A in Wheat Ridge

Highway Location:

Counties: Jefferson
Length (Miles): 5.526

OAHP Site Numbers (for previously recorded segments, if applicable)*:

<i>OAHP Site No.</i>	<i>Assessment</i>	<i>Assessment Date</i>	<i>Site Name</i>
None	No previously recorded segments are found on or adjacent to this highway		

Discussion of Site Forms (for previously recorded segments, if applicable):

No Colorado Cultural Resources Inventory forms for previously recorded segments of this highway were identified in Compass.

Historic Districts located within 250 feet of highway (OAHP Site Number and Name)*:

<i>OAHP Site No.</i>	<i>District Name</i>	<i>Assessment (If Applicable)</i>
None	No historic districts are found on or adjacent to this highway	

**Information based on data from Compass provided by OAHP*

Colorado Historic Highway Inventory - Historical Summary and Evaluation of Significance

Highway Name: State Highway (SH) 58

Historical Data:

SH 58 is a 5.5-mile expressway, known as the Golden Freeway, that connects Interstate(I)-70 in Wheat Ridge to US 6 through Clear Creek Canyon and SH 93 between Golden and Boulder. The current highway, built from 1971 to 1973, is a freeway connection between I-70 at Youngfield, the Coors Brewery, and the northwest side of Golden, and it does not represent the historic highway that once connected Black Hawk, Golden, and west Denver along 44th Avenue, terminating at Federal Boulevard. In both Denver and Jefferson counties, 44th Avenue is co-signed as County Road 58, representing the location of the former state highway in the metro area. Before it became a state highway, the route was designated the Wigginton North Golden Road, one of several routes between Denver and Golden, and the northernmost route that roughly followed 44th Avenue (Scott 1999). The former path of SH 58 west of Golden is now carried by Jefferson County Road 70. SH 46 through Golden Gate Canyon State Park, and part of SH 119 that connects Central City and Black Hawk.

Matthew Salek notes that by 1954, the Colorado Highway Department turned all of SH 58 west of Golden back to Jefferson County, leaving only the section along 44th Avenue from Golden to Federal Boulevard as SH 58. By 1963, the east end was Sheridan Boulevard, and by 1967, the east end was Wadsworth Boulevard. The highway used to run through Golden on 10th Street to connect with SH 93, but this alignment changed to 7th Street between US 6 and Ford Street in 1971. The freeway extended past the Coors Brewing Company to the highway's current eastern terminus, I-70, in 1973. The construction and right-of-way took houses along seven blocks of 7th Street in Golden, but east of Golden the route required less property in an undeveloped area on either side of West 44th Avenue, which was left intact. The relevant historic themes include post-World War II growth of the northwest part of the metro area. There have been changes to the east and west connections of the highway with the redesign of SH 93 in 1992 and realignment of the interchange at I-70 in 2008.

A review of sources did not reveal that this route represents important road engineering achievements, or that it served to provide an important connection to markets or facilitated development related to the growth of the northwestern Denver metropolitan area. It is a limited access, multiple lane, divided highway/freeway connecting Wheat Ridge and Golden. Freeways are one of the property subtypes identified in the Colorado State Roads and Highways MPS (Autobee and Dobson-Brown 2003: F10-11).

(Unless otherwise indicated, sources used in the preparation of this section included state highway maps, the Highways of Colorado by Matthew Salek, Highways to the Sky: A Context and History of Colorado's Highway System, Colorado State Roads and Highways, National Register of Historic Places Multiple Property Submission, plans in the Online Transportation Information System (OTIS), and site forms for previously surveyed resources in Compass when available.)

**Information based on data from Compass provided by OAHF*

Colorado Historic Highway Inventory - Historical Summary and Evaluation of Significance

Highway Name: State Highway (SH) 58

- Not Significant - No historical significance identified**
- Significant - Historical significance identified (see details below)**

Property Type and Areas of Significance:

A detailed explanation why this highway possesses historical significance is provided in the Significance Statement below.

Cultural:

Criterion A specific requirements

- Early and/or prominent project of the Colorado Highway Department (Transportation)
- Association with a significant event (If applicable, the Area of Significance is indicated in the statement of significance below)
- Association with federal work relief programs (Politics/Government)

Criterion C specific requirements

- Representative example (Transportation)

Engineering:

Subtypes

- Farm-to-Market Road
- Limited Access, Multiple-Lane, Divided Highway/Freeway
- Highway Bypass

Criterion A specific requirements

- Early and/or prominent project of the Colorado Highway Department (Transportation)
- Association with a significant event (If applicable, the Area of Significance is indicated in the statement of significance below)
- Association with federal work relief programs (Politics/Government)

Criterion C specific requirements

- Representative example (Transportation)
- Engineering achievement (Engineering)

Aesthetic:

Criterion A specific requirements

- Early and/or prominent project of the Colorado Highway Department (Transportation)
- Association with a significant event (If applicable, the Area of Significance is indicated in the statement of significance below)
- Association with federal work relief programs (Politics/Government)

Criterion C specific requirements

- Representative example (Transportation)
- Engineering achievement (Engineering)
- Landscape architecture (Landscape Architecture)

**Information based on data from Compass provided by OAHF*

Colorado Historic Highway Inventory - Historical Summary and Evaluation of Significance

Highway Name: State Highway (SH) 58

Historic periods of highway construction:

- Pre-territorial (pre-1861)
- Territorial and pre-automobile state roads (1861-1890)
- Automobile age (1890-1930)
- Depression and World War II (1930-1945)
- Postwar Interstate Era (1945-1973)
- Completion and Augmentation of Interstate System (1973-2000)

Level of Significance:

- Local
- State
- National

Significance Statement:

SH 58 is classified as an Engineered Route under the classification system in the MPS and is a limited access, multiple lane freeway property subtype, one of the properties identified in the 2003 MPS.

Criterion A

As an Engineered Route, SH 58 does not possess significance under Criterion A. Research failed to indicate this highway has a direct association with a historical theme important in Colorado history, or that it represents an early or prominent road construction project of the Colorado Highway Department, or the connections it provides inform any subsequent highway improvements. The original highway that connected Black Hawk, Golden, and Denver is not represented by the current configuration of SH 58, which is essentially a 1970s freeway between I-70, SH 93, and US 6 on the northwest edge of the Denver metropolitan area. As such, the highway is not yet fifty years old and it is not considered to be of exceptional importance to qualify under Criteria Consideration G. The current highway is associated with the growth of communities such as Wheat Ridge and Golden. However, research failed to indicate this highway has a direct and important association with the development of this part of the metropolitan area after World War II. As such, the highway does not meet the 50 year guideline of the National Register and does not possess exceptional importance to meet Criterion Consideration G. SH 58 does not possess significance under Criterion A.

Criterion B

Research did not reveal this highway to be directly associated with the events or work of a person important in history, nor does research indicate the highway represents the efforts of a specific individual to secure construction of this highway for the economic development of a community or area of the state. Therefore, this highway does not possess significance under Criterion B.

Criterion C

As a representative example, a state highway that exhibits physical features indicative of an important type or subtype identified in the MPS reflecting its original design or important variation may possess significance. A state highway may also possess significance for particularly important engineering achievements or as an important example of a property type, in this case, the freeway subtype.

This freeway is not considered to be an early or an important example of the freeway subtype. The MPS defines the general period of significance for freeways as beginning in 1941 with the West Sixth Avenue Freeway in Denver and Lakewood. By the late 1970s, the majority of the freeway system had been built in Colorado, yielding multiple examples of this property subtype. As a relatively recent freeway that is less than fifty years old, SH 058 must exhibit exceptional significance to be considered eligible for listing in the National Register under Criteria Consideration G. The research and literature review yielded no evidence to indicate the use of innovative or important engineering design or construction techniques that serve to distinguish this freeway from others of its type, and it does not appear to exhibit important engineering innovations or important later modifications. The freeway's design and construction appear to fall within the established standard practices of state highway design and construction of the time, and the freeway does not possess significance under Criterion C.

**Information based on data from Compass provided by OAHP*

Colorado Historic Highway Inventory - Historical Summary and Evaluation of Significance

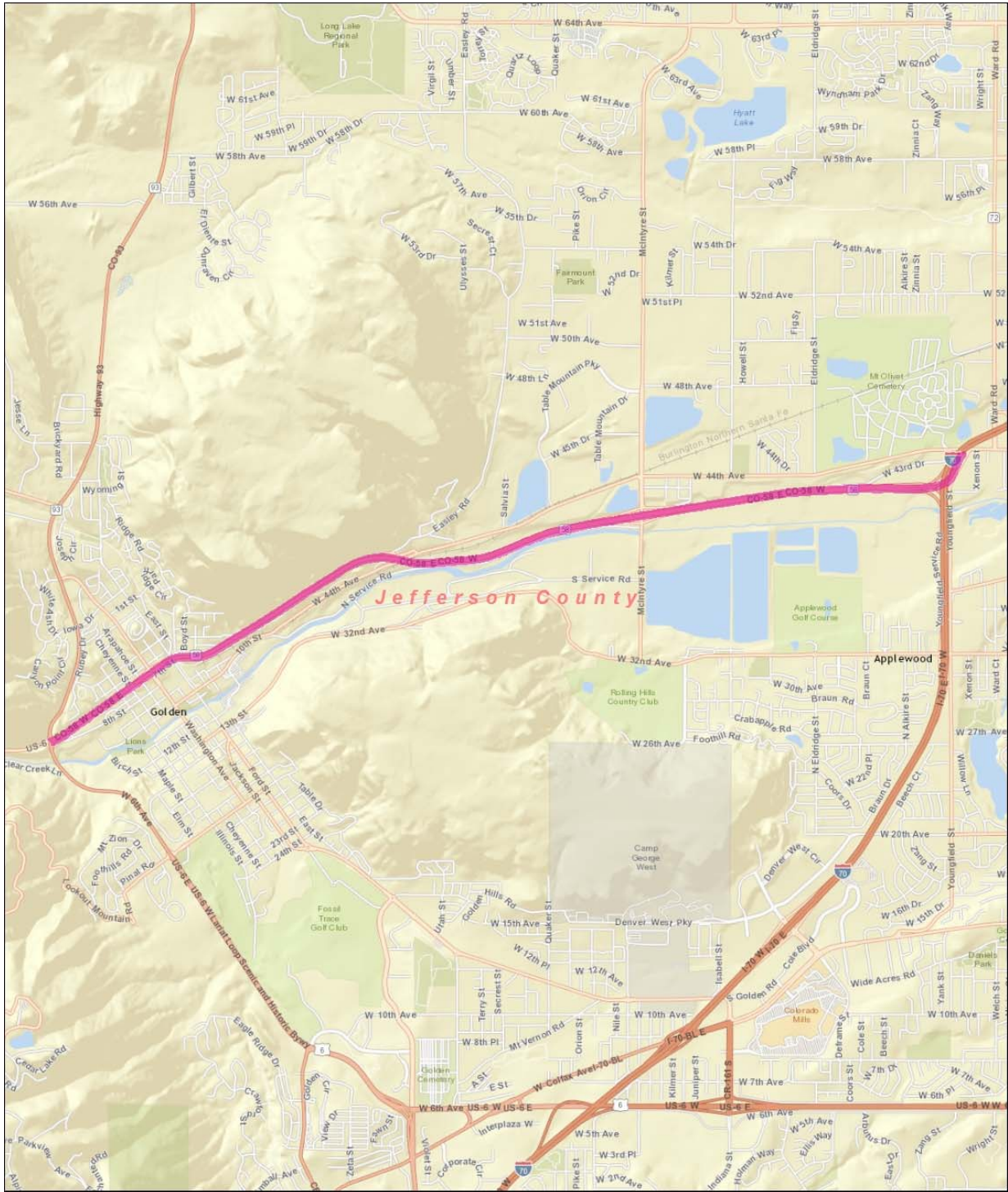
Highway Name: State Highway (SH) 58

Criterion D

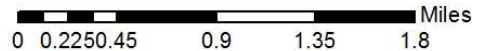
For a property to possess significance for information potential, the information yielded by the property must answer specific important research questions that cannot be otherwise answered. The technology of highway construction is well understood and documented. As such, this highway is unlikely to yield important information that cannot be discerned from archived plans and other records. Therefore, this highway does not possess significance under Criterion D.

Colorado Historic Highway Inventory - Historical Summary and Evaluation of Significance

Highway Name: State Highway (SH) 58



Service Layer Credits: Sources: Esri, HERE, DeLorme, USGS, Intermap, increment P Corp., NRCAN, Esri Japan, METI, Esri China (Hong Kong), Esri (Thailand), TomTom, MapmyIndia, © OpenStreetMap contributors, and the GIS User



- SH 58
- County Boundary

SH 58



Map indicates the extent of the highway based on CDOT GIS data; portions co-signed with other highways may not be indicated.

*Information based on data from Compass provided by OAHF