



COLORADO

Department of Transportation



Topic: NEPA

Date: October 6, 2020



COLORADO

Department of Transportation



Headphones



Video



Chat



Mute



Gallery View



Breakout Rooms



COLORADO

Department of Transportation

October	NEPA Update
November	Noise/AQ
December	PEL
January	Visual
February	Water Quality/MS4
March	Cultural Resources
April	Paleo/Section 4(f)/6(f)
May	Wetlands and Wildlife
June	EJ/Public Involvement



COLORADO

Department of Transportation

Agenda

- Public Involvement
- NEPA Briefings
- Standard Mitigation
- ROW Only ReEvals
- GIS Scoping Tool
- New Rulemaking



COLORADO
Department of Transportation

Coffee Sponsor



DAVID EVANS
AND ASSOCIATES INC.



COLORADO
Department of Transportation

West Vail Pass

Virtual Public Engagement



I-70 West Vail Pass Auxiliary Lanes Project
Environmental Assessment (EA) and Section 4(f) Evaluation
[Virtual Public Engagement](#)

September 2020



COLORADO
Department of Transportation

New Executive Director NEPA Briefing Process

- Briefing Decision Tree
- Memo Template for Signature
- Check Points
- Dashboard



COLORADO
Department of Transportation

R1 Standard Mitigation Effort

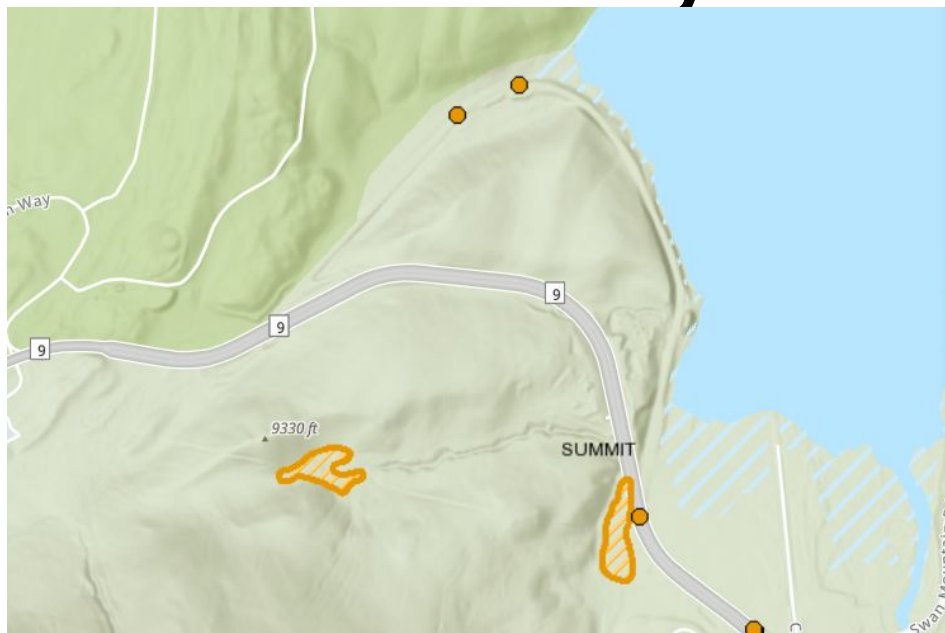
- Water Quality
- Visual
- Bio/Wetlands





COLORADO
Department of Transportation

ROW only - Re-evals



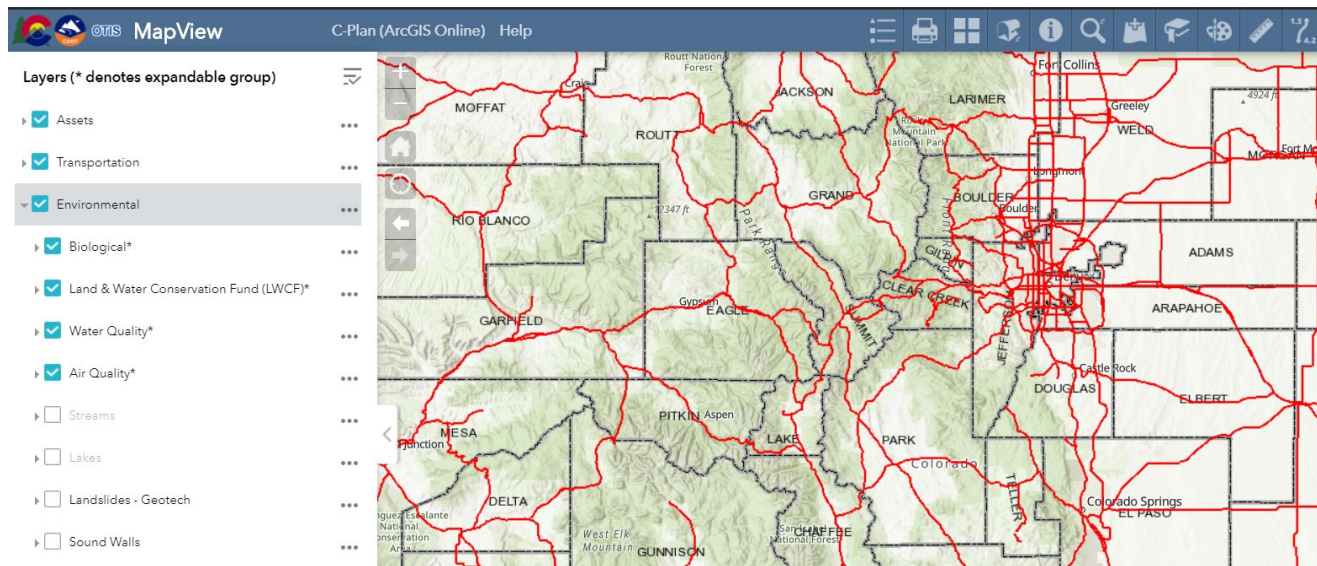
- Environmental**
- Biological*
 - Roadkill
 - DEER ●
 - ELK ■
 - Noxious Weeds - 2017
 - Project Wetlands
 - Potential Fen Wetlands
 - Seed Mixes
 - Breaks
 - Clayey Foothills
 - Deep Sands
 - Douglas Fir/Pine Forest
 - Flood Plains and River Wash



COLORADO

Department of Transportation

GIS Scoping Tool



<https://dtdapps.coloradodot.info/MapViewext/>



COLORADO
Department of Transportation

GIS Scoping Tool Poll



COLORADO

Department of Transportation

Final Rulemaking

- Page Limits (75/150)
- Time Limits (1yr/2yrs)
- Cumulative Impacts





COLORADO
Department of Transportation

CDOT





COLORADO
Department of Transportation

FHWA





COLORADO
Department of Transportation

Questions/Discussion



COLORADO
Department of Transportation

Breakout Groups