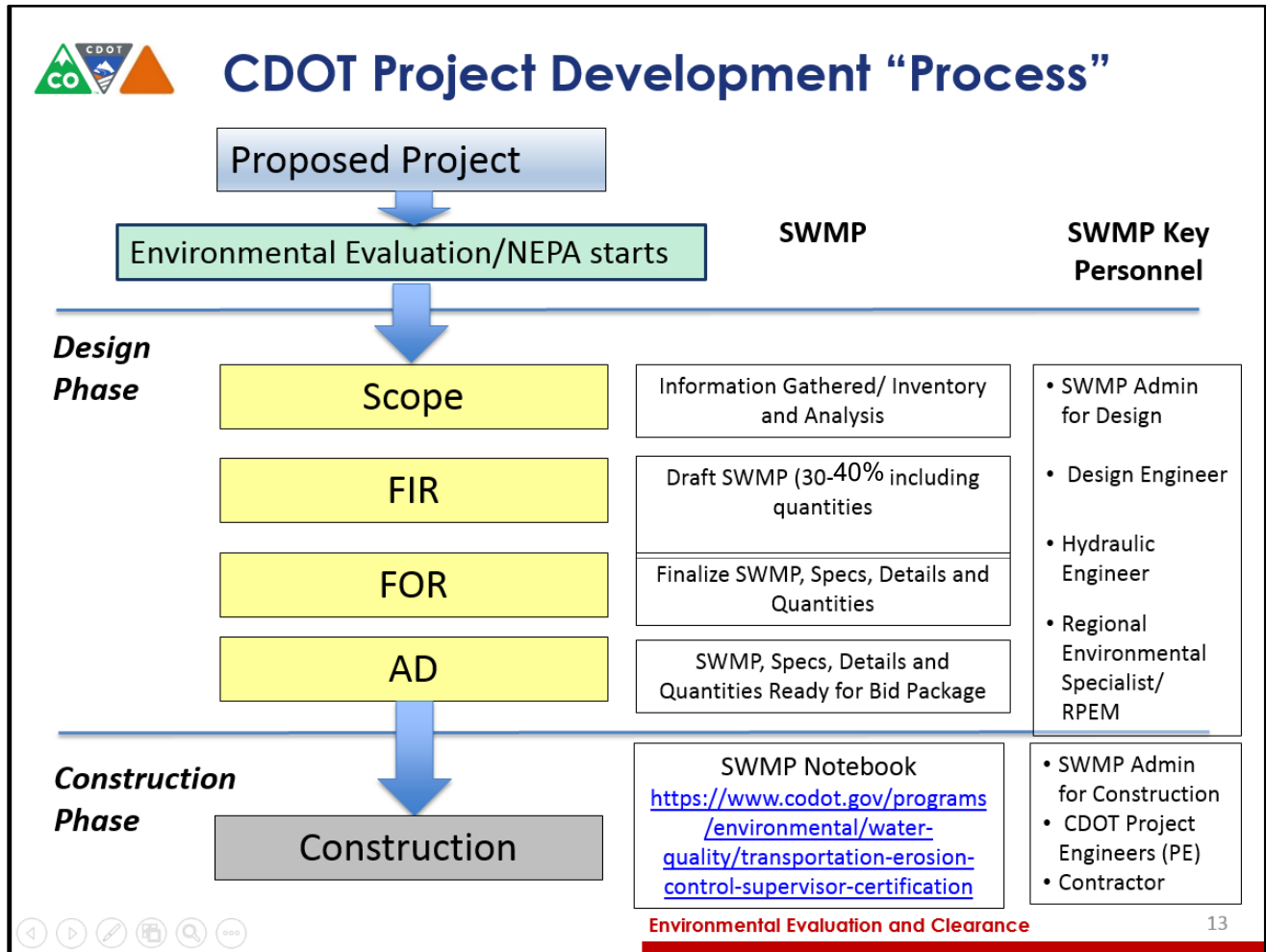




CDOT Project Development and SWMP Development Process



During the scoping phase of the project, the SWMP Administrator for Design begins to gather information that is needed for the development of the SWMP. Key personnel that will be used to get this information include the design engineer, resident engineer, regional environmental specialist, hydraulic engineer, and Regional Planning and Environmental Manager (RPEM). SWMP Administrator for Design is really working under the RPEM.

In the FIR phase, the SWMP Administrator for Design will be putting that information together and drafting the SWMP. The key personnel to assist in that endeavor tend to be the same people as the ones involved with information gathering.

In the FOR phase, the SWMP should be finalized. This is why ideally all of the environmental evaluations and clearances should be finished by the FOR phase so if any information that results from any of the environmental clearances process can be incorporated into the SWMP and design as necessary.

All documents should be final for the AD phase because this is what the contractors are bidding on and if documents are not final it could result in unnecessary change orders and bids based incorrect quantities.



A significant shift occurs between the AD and Construction phase. This shift is the point where the project goes from design to construction. During construction, the SWMP Administrator changes from the SWMP Administrator for Design to the SWMP Administrator for construction. The SWMP administrator for Construction must be certified as a TECS.

(If you are interested in getting the TECS certification you can visit the CDOT training website for more information).