

A series of LIDAR-based viewshed analyses that can be customized to a CDOT project



Environmental, Pre-Construction Engineering, and Transportation Development.

Challenge

Lack of standardized viewshed analysis process across CDOT regions

Innovation

A series of LIDAR-based viewshed analyses that can be customized to a CDOT project

Parts Used

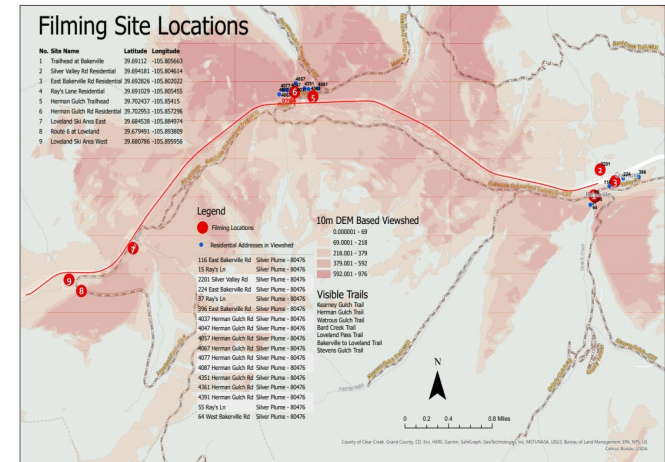
ArcGIS Pro - Spatial Analyst & 3D Analyst

Benefits

- Saves Time
- Saves Money
- Improves External Customer Experience

[CLICK HERE FOR MORE DETAILS](#)

EJMT to Bakerville_10mDEM_Viewshed



Department of Transportation Development,
Environmental Programs Branch,
Landscape Architecture Section

[Liia Koiv-Haus](#), Landscape Specialist (HQ),
[Jennifer Kerns](#), Temporary Aide (HQ), [Veronica McCall](#), EPS II (Region 1), [Evan Kirby](#), CDOT Consulting Partner

