

Region 1 road kill update, 2015

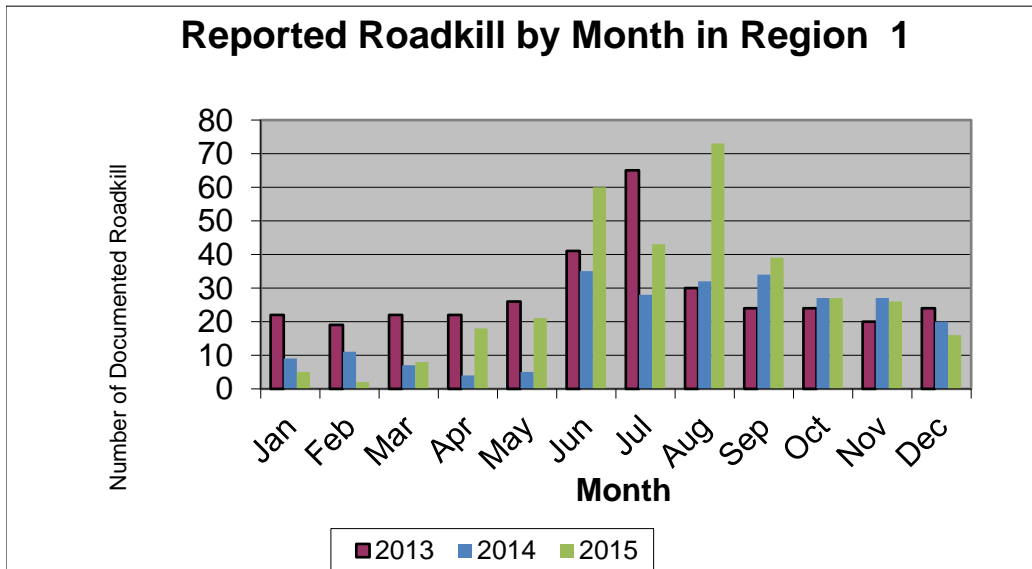
1/20/2016

Totals from CDOT personnel

Total number of reported animals killed 338

Note: Regional boundaries were reconfigured in 2013

BY MONTH	2013	2014	2015
Jan	22	9	5
Feb	19	11	2
Mar	22	7	8
Apr	22	4	18
May	26	5	21
Jun	41	35	60
Jul	65	28	43
Aug	30	32	73
Sep	24	34	39
Oct	24	27	27
Nov	20	27	26
Dec	24	20	16
Total	339	239	338



Region 1 road kill update, 2015

1/20/2016

2015 BY SPECIES				
BEAR	2		ELK	23
BEAVER	1		FOX	8
BOBCAT	1		MOOSE	1
CAT	3		OWL	1
COYOTE	4		PORCUPINE	2
DEER	159		RACCOON	3
DOG	4		UNK	126

SPECIES BY MONTH		
Jan	CAT	1
	UNK	4
Feb	DOG	2
Mar	CAT	1
	DEER	3
	ELK	2
	UNK	2
April	BEAVER	1
	COYOTE	1
	DEER	4
	ELK	2
	UNK	10
May	CAT	1
	DEER	15
	DOG	2
	RACCOON	2
	UNK	1
June	COYOTE	1
	DEER	32
	ELK	1
	PORCUPINE	1
	UNK	25

SPECIES BY MONTH		
July	DEER	25
	UNK	18
Aug	BEAR	2
	DEER	17
	ELK	11
	PORCUPINE	1
	UNK	42
Sept	DEER	16
	ELK	5
	FOX	1
	MOOSE	1
	UNK	16
Oct	BOBCAT	1
	DEER	17
	FOX	5
	OWL	1
	UNK	3
Nov	DEER	19
	ELK	1
	FOX	2
	RACCOON	1
	UNK	3
Dec	COYOTE	2
	DEER	11
	ELK	1
	UNK	2

Region 1 road kill update, 2015

1/20/2016

Hwy	MP	Total
006G	250-260	1
	260-270	1
	270-280	2
008A	0-10	1
036B	30-40	1
040A	240-250	3
	250-260	13
067E	120-130	1
070A	210-220	12
	220-230	21
	230-240	22
	240-250	24
	250-260	50
	270-280	3
	280-290	4
	300-310	1
	310-320	1
072A	10-20	1
074A	0-10	17
	10-20	18
076A	10-20	1
083A	60-70	1
085B	180-190	1
	190-200	1
	200-210	9
085C	220-230	1
088A	0-10	1
	10-20	1
088B	10-20	2
	20-30	1
093A	0-10	10
095A	0-10	1
121B	0-10	1
128A	0-10	3
177A	0-10	1
270A	0-10	4
270B	0-10	1
285D	220-230	7
	230-240	50

Region 1 road kill update, 2015

1/20/2016

Species	hwy	mp	#
BEAR			
070A			
	228		1
	246.5		1
BEAVER			
070A			
	230		1
BOBCAT			
036B			
	36		1
CAT			
070A			
	231		1
270A			
	2		1
287C			
	297		1
COYOTE			
070A			
	229		1
285D			
	233.9		1
470A			
	20		2
DEER			
006G			
	258		1
	264.5		1
	273		2
008A			
	1.8		1

Species	hwy	mp	#
DEER			
040A			
	243		1
	249		2
	251		1
	254.4		3
	254.5		3
	255		1
	255.5		1
	256		2
	257.5		1
067E			
	126.5		1
070A			
	215.5		1
	216		2
	217		1
	218		1
	219.5		1
	221.7		1
	222.5		1
	223.9		1
	226		1
	228		1
	228.7		1
	230		1
	231		1
	231.4		1
	232		2
	234		1
	235		2
	237		1
	238		3
	239.5		1
	240		1
	241		5

Species	hwy	mp	#
DEER			
070A			
	243.9		1
	244		1
	248.9		1
	250		2
	250.3		1
	251		1
	252		1
	252.7		1
	252.8		1
	255		1
	255.6		1
	259		2
	259.34		1
	271		1
	284		2
	308.9		1
	313		1
	216-241		5
	241-250.2		3
072A			
	16		1
074A			
	1		3
	8		1
	17.9		2
083A			
	66.461		1
085B			
	200		3
	202		1
085C			
	228.599		1

Region 1 road kill update, 2015
1/20/2016

Species	hwy mp	#
DEER		
088B		
18.491		2
20		1
093A		
0		1
4.5		2
5		1
121B		
2		1
128A		
0.5		1
2.3		1
2.6		1
270B		
0.9		1
285D		
229		5
230.7		1
232.2		1
234		5
234.2		1
235.8		1
235.9		1
236		1
237.2		1
237.5		1
238		1
238.2		1
238.5		2
241		3
242.5		1
243		1
245		1
229-248.4		13

Species	hwy mp	#
DEER		
470A		
5		1
8		2
9		2
11		1
16		1
17		2
19		1
20		1
22.2		1
23		1
DOG		
070A		
278.6		1
284.8		1
270A		
0.88		1
470A		
17		1
ELK		
070A		
222		1
241		1
246.5		1
249		1
254		1
256.3		1
256.9		1
259		2
074A		
5.3		1
17.9		1
085B		
189.1		1
195.5		1
093A		
0-9		6
285D		
234		3
470A		
22		1

Species	hwy mp	#
FOX		
070A		
222		1
247.5		1
285D		
230.8		1
231		1
234.15		1
236.5		1
238		1
241		1
MOOSE		
070A		
221		1
OWL		
285D		
236		1
PORCUPINE		
070A		
216		1
220		1
RACCOON		
070A		
228		1
088A		
7.5		1
11.1		1

Region 1 road kill update, 2015
1/20/2016

Species	hwy	mp	#
UNK			
040A			
	251		1
070A			
	215		1
	215.5		3
	216		1
	220		1
	226		3
	230		1
	232		1
	241		6
	248		1
	250		1
	250.3		1
	256.5		1
	276.11		1
	284.6		1
	216-241		4
	250.3-258.7		30
074A			
	18		2
	0-18		25
076A			
	15.5		1
085B			
	206		5
095A			
	0.01		1
177A			
	1		1
270A			
	2.4		1
	2.6		1

Species	hwy	mp	#
UNK			
285D			
	229		2
	233		5
	241.1		1
	248		1
	250		1
	229-248.4		11
	229-248.7		9
470A			
	15		1

REPORTING PATROLS
1501
1509
1510
1512
1513
1514
1515
1516
1517
1518
1519
1521
1522
1526
1527
1528
1530
1927
1930
1935
1936
1940
1941
1945
6812

Region 2 road kill update, 2015

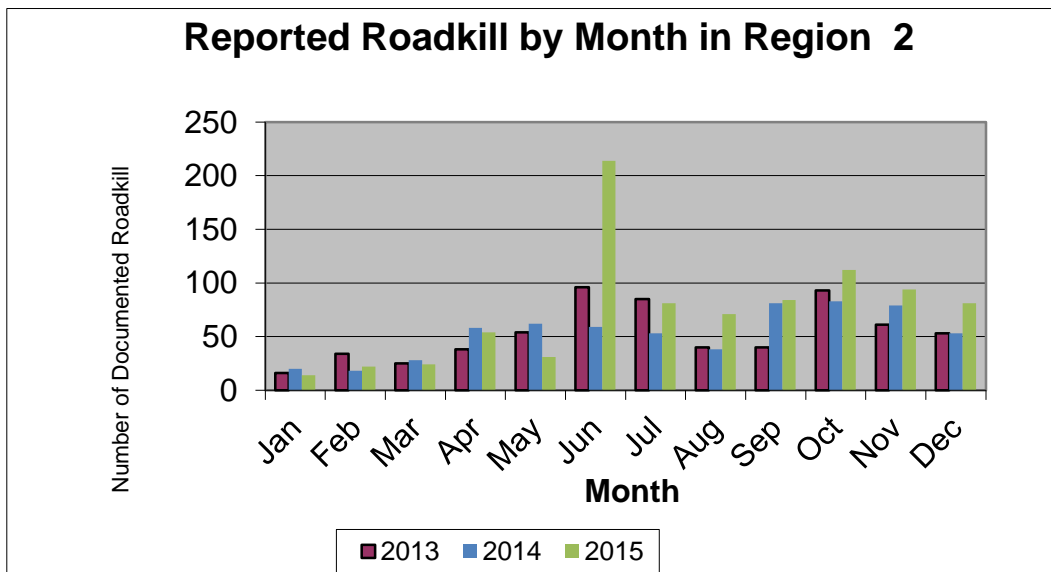
1/20/2016

Totals from CDOT personnel

Total number of reported animals killed 882

Note: Regional boundaries were reconfigured in 2013

BY MONTH	2013	2014	2015
Jan	16	20	14
Feb	34	18	22
Mar	25	28	24
Apr	38	58	54
May	54	62	31
Jun	96	59	214
Jul	85	53	81
Aug	40	38	71
Sep	40	81	84
Oct	93	83	112
Nov	61	79	94
Dec	53	53	81
Total	635	632	882



Region 2 road kill update, 2015
1/20/2016

2015 BY SPECIES	
BADGER	2
BEAR	1
BEAVER	1
BOBCAT	2
CAT	2
COW	2
COYOTE	4
DEER	619
DOG	8
ELK	54
FOX	3
PORCUPINE	1
PRONGHORN	16
RABBIT	27
RACCOON	13
SKUNK	5
UNK	122

SPECIES BY MONTH	
Jan	
DEER	11
ELK	3
Feb	
DEER	17
ELK	5
Mar	
COYOTE	1
DEER	16
ELK	2
RACCOON	1
SKUNK	1
UNK	3

SPECIES BY MONTH	
April	
DEER	38
DOG	1
ELK	2
RABBIT	12
UNK	1
May	
DEER	23
DOG	1
ELK	4
UNK	3
June	
BOBCAT	1
COW	2
DEER	150
ELK	13
PRONGHORN	6
RABBIT	14
UNK	28
July	
BADGER	1
DEER	64
DOG	2
ELK	4
PORCUPINE	1
PRONGHORN	1
RACCOON	2
SKUNK	1
UNK	5
Aug	
BEAR	1
BEAVER	1
COYOTE	1
DEER	43
DOG	2
ELK	1
FOX	1
RACCOON	7
UNK	14

SPECIES BY MONTH	
Sept	
DEER	56
DOG	1
ELK	4
PRONGHORN	2
RACCOON	1
SKUNK	1
UNK	19
Oct	
BOBCAT	1
CAT	2
COYOTE	1
DEER	66
ELK	10
FOX	2
PRONGHORN	4
RACCOON	2
SKUNK	2
UNK	22
Nov	
COYOTE	1
DEER	82
ELK	2
PRONGHORN	1
UNK	8
Dec	
BADGER	1
DEER	53
DOG	1
ELK	4
PRONGHORN	2
RABBIT	1
UNK	19

Region 2 road kill update, 2015
1/20/2016

hwy mp	#
009A	
0-10	22
10-20	19
20-30	5
30-40	2
40-50	1
009B	
50-60	1
009C	
70-80	4
010A	
0-10	1
60-70	2
012A	
0-10	4
10-20	2
20-30	2
40-50	8
60-70	1
016A	
0-10	1
021A	
130-140	3
021B	
140-150	11
150-160	1
024A	
230-240	1
240-250	2
250-260	1
260-270	1
270-280	1
280-290	15
290-300	65
300-310	21
024G	
310-320	14
330-340	1
024H	
300-310	2

hwy mp	#
025A	
10-20	3
40-50	2
50-60	1
60-70	30
70-80	8
80-90	22
90-100	14
100-110	13
110-120	4
120-130	6
130-140	4
140-150	26
150-160	12
160-170	9
045A	
0-10	5
047A	
0-10	5
050A	
240-250	6
250-260	3
260-270	3
270-280	5
280-290	10
290-300	2
300-310	6
050B	
320-330	1
330-340	2
360-370	1
370-380	1
380-390	2
400-410	1
420-430	2
430-440	1
440-450	10
450-460	3

hwy mp	#
067A	
0-10	6
10-20	1
067B	
10-20	2
067F	
60-70	3
069A	
50-60	5
60-70	4
70-80	8
80-90	3
070A	
200-210	1
071B	
10-20	2
078A	
10-20	6
20-30	1
083A	
20-30	5
094A	
0-10	21
20-30	8
096A	
0-10	11
10-20	5
20-30	10
30-40	4
40-50	2
70-80	1
096B	
70-80	1
80-90	4

Region 2 road kill update, 2015
1/20/2016

hwy mp	#
096D	
160-170	1
170-180	14
190-200	13
200-210	1
101A	
0-10	4
105A	
0-10	1
109A	
50-60	1
115A	
0-10	9
10-20	15
20-30	25
30-40	35
40-50	37
120A	
0-10	1
160A	
280-290	6
290-300	14
300-310	5
165A	
20-30	3
30-40	3
231A	
0-10	2
285D	
160-170	11
170-180	6
180-190	14
190-200	3
200-210	1
210-220	17
220-230	42
287A	
40-50	10

hwy mp	#
385A	
110-120	3
120-130	1
90-100	3
287B	
0-10	3
110-120	1
120-130	4

Species hwy mp	#
BADGER	
024A	
239	1
094A	
9.4	1
BEAR	
115A	
39.3	1
BEAVER	
025A	
87	1
BOBCAT	
025A	
75	1
127	1
CAT	
024A	
301	1
115A	
10.2	1
COW	
285D	
164	2
COYOTE	
025A	
87	1
115A	
28.4	1

Species hwy mp	#
COYOTE	
285D	
228	1
287A	
43.1	1
DEER	
009A	
0.6	1
1	1
1.9	1
2.2	1
2.5	1
4	1
4.5	1
4.6	1
4.8	1
5.5	1
5.9	2
6.5	1
7	3
7.3	1
8.5	2
9.6	1
9.8	1
9.9	1
10	1
10.1	1
11.5	1
12.3	1
12.4	1
12.6	2
13.4	1
14	1
15.2	3
16	1
17.5	1
18.7	4
19.5	1
26.2	1
26.5	1
27	1
46	1

Region 2 road kill update, 2015
1/20/2016

Species	hwy mp	#
DEER		
009C		
	72.8	1
	74.3	1
DEER		
010A		
	1.6	1
	64	2
012A		
	3	1
	8.7	1
	11	1
	16.8	1
	24.6	2
	65.2	1
016A		
	1	1
021A		
	136.75	1
	137	1
021B		
	142	2
	142.2	1
	142.4	3
	142.5	1
	143.1	1
	145.2	2
	145.8	1
	154	1
024A		
	256	1
	269	1
	279	1
	288	3
	288.5	1
	289	6
	289.2	1
	289.5	1
	290	1

Species	hwy mp	#
DEER		
024A		
	290.1	1
	290.5	2
	290.8	1
	291	6
	291.1	1
	291.3	2
	291.8	2
	292	3
	292.3	4
	293	1
	294	5
	295	1
	295.5	6
	296	2
	296.2	1
	296.4	1
	296.5	1
	297.7	1
	298.8	1
	299	8
	299.3	2
	299.5	1
	299.7	1
	299.8	1
	299.9	1
	300	1
	300.1	10
	300.2	1
	300.5	1
	301	1
	302	1
	302.4	1
	303.1	1
	303.2	1

Species	hwy mp	#
DEER		
024G		
	313.37	1
	313.8	2
	315.1	1
	316.4	2
	316.5	2
	316.6	2
	316.8	1
	339.1	1
024H		
	309.1	1
025A		
	40	1
	50	5
	51	1
	74.5	1
	75	2
	76	1
	77	2
	77.2	3
	77.5	1
	79	1
	81	3
	81.8	1
	82	1
	94	1
	96	1
	99.01	1
	123	1
	126	2
	128.2	1
	128.5	1
	131	2
	132	2
	136	1
	137	2
	140	2
	140.7	1

Region 2 road kill update, 2015
1/20/2016

Species	hwy mp	#
DEER		
025A		
141		1
141.3		1
144.6		1
145		1
146		2
147		5
147.6		1
149		4
149.5		3
151		2
152		1
152.7		1
153.5		1
154.1		2
155.9		1
156		2
157.9		1
158		1
160.4		1
160.6		2
160.75		3
161.2		2
161.4		2
162		1
162.5		2
136-146.5		3
045A		
1		1
5		1
6		1
050A		
242.01		1
243.9		1
244.3		1
244.9		1
248.5		1
249.5		1
250.3		1
250.7		1
253		1
265.2		2
267.1		1

Species	hwy mp	#
DEER		
050A		
270		1
271		1
276.5		2
277		1
280.7		1
281.5		2
281.8		1
282		1
282.5		3
284		1
289		1
307		2
050B		
323		1
330		1
331		1
363		1
375		1
402		1
424.72		1
436		1
440		1
441.8		1
442		1
443		1
444		3
444.5		1
445		1
446		1
451		1
459		2
067A		
1		1
1.2		1
1.7		1
2.4		1
2.6		1
7.2		1
11		1
067B		
12.5		2

Species	hwy mp	#
DEER		
067F		
63		2
66		1
069A		
57.4		1
57.7		1
59.47		1
59.8		1
59.9		1
60.4		1
60.8		1
66.8		1
69.5		1
72.9		2
73.9		1
74.3		1
74.6		1
74.95		1
77.2		2
81.9		1
82		1
82.05		1
071B		
12		2
078A		
14		1
083A		
23.3		1
24.59		2
25.4		1
094A		
1		1
2.4		1
3.5		2
5.9		1
6		2
6.2		3
6.5		1
7		2
7.2		1
7.3		1
20		1

Region 2 road kill update, 2015
1/20/2016

Species	hwy mp	#
DEER		
096A		
2.2	1	1
3.8	2	2
5.5	1	1
6.6	1	1
6.75	1	1
7.01	1	1
7.7	1	1
9.1	1	1
13	1	1
13.5	1	1
14.8	1	1
14.9	1	1
23	2	2
24.1	1	1
24.6	1	1
25.1	1	1
25.2	2	2
25.5	1	1
27.5	1	1
28	1	1
32	1	1
47	2	2
72.4	1	1
33-45	3	3
096B		
72	1	1
81.1	2	2
88.7	2	2
096D		
169	1	1
179	1	1
207	1	1
105A		
7.1	1	1
109A		
54	1	1

Species	hwy mp	#
DEER		
115A		
0	1	1
2.2	1	1
4.5	1	1
5	1	1
8.903	1	1
10.5	1	1
11.1	1	1
15.7	2	2
17.9	2	2
18.9	1	1
19	2	2
21	1	1
23.4	1	1
25	3	3
25.5	2	2
26.4	1	1
26.5	1	1
26.6	1	1
26.8	1	1
26.9	1	1
27.2	1	1
27.3	2	2
27.6	1	1
27.9	3	3
28.6	1	1
30	1	1
30.4	1	1
30.6	1	1
31	1	1
31.1	2	2
31.3	1	1
31.9	1	1
32.5	1	1
33.2	1	1
34.2	1	1
34.3	1	1
34.4	2	2
34.5	1	1
34.7	1	1
34.8	1	1

Species	hwy mp	#
DEER		
115A		
35	1	1
35.5	1	1
36	2	2
36.3	1	1
37.4	2	2
38	1	1
38.5	1	1
38.9	1	1
39	1	1
39.5	1	1
40	2	2
40.1	1	1
40.3	3	3
40.9	2	2
42.1	1	1
42.2	2	2
42.4	1	1
42.5	1	1
42.6	2	2
42.67	2	2
42.8	2	2
43.6	1	1
43.8	1	1
43.85	1	1
43.9	3	3
44	3	3
45.1	1	1
45.4	3	3
45.6	1	1
45.88	2	2
46	1	1
46.1	1	1
1-7	4	4
120A		
4.1	1	1

Region 2 road kill update, 2015
1/20/2016

Species	hwy mp	#
DEER		
160A		
	282	1
	283.5	1
	285.3	2
	288.1	1
	291.3	1
	294.4	2
	297.4	1
	299	1
	299.2	1
	299.4	1
	299.8	3
	301	1
	301.1	1
	301.8	1
	304	2
165A		
	26	1
	29.6	2
	32	1
	33.9	1
	35.5	1
231A		
	1	2
285D		
	186.5	1
	189	2
	189.6	2
	210.2	2
	215.5	2
	215.8	2
	216	1
	216.2	2
	216.3	1
	217.8	1
	218.4	1
	218.5	3
	219.2	1
	219.3	1
	221	1
	221.9	1

Species	hwy mp	#
DEER		
285D		
	222.8	2
	223.1	1
	223.3	1
	223.4	1
	223.5	1
	223.6	1
	223.8	1
	224	2
	224.5	5
	225	2
	225.1	1
	225.3	2
	226	4
	226.5	2
	226.8	1
	227	1
	227.1	2
	227.2	1
	227.5	2
	227.6	2
	227.7	1
	227.8	1
	228.3	1
287A		
	44	1
287B		
	3	3
	110.5	1
	125-133	4
385A		
	97	3
	120.5	1
DOG		
012A		
	7.4	2
024A		
	293	1
024G		
	314	1

Species	hwy mp	#
DOG		
024H		
	305.6	1
025A		
	134.5	1
094A		
	6.7	1
115A		
	28.8	1
ELK		
009A		
	29.5	1
009B		
	58.8	1
024A		
	296.5	1
024G		
	314.8	1
025A		
	45	2
	69.9	3
	74.5	2
	77	1
	78	1
	80	1
	80.5	1
050A		
	295	2
070A		
	201	1
078A		
	22.6	1
096A		
	2.9	1
	3.8	1
	12.3	1
115A		
	15	1
	26.3	2
	32.5	1
160A		
	286.5	1

Region 2 road kill update, 2015
1/20/2016

Species	hwy mp	#
ELK		
285D		
	162.5	1
	168.2	1
	168.4	1
	168.5	2
	168.8	2
	169	2
	170.5	2
	171	1
	171.2	1
	172.8	2
	181.5	2
	182.5	1
	184.2	1
	185	2
	188	1
	188.7	1
	189	1
	196.2	1
	196.5	1
	204.5	1
FOX		
115A		
	26.1	1
	34.1	2
PORCUPINE		
025A		
	86	1
PRONGHORN		
024A		
	247	1
025A		
	42	1
050A		
	309	2
083A		
	21	1

Species	hwy mp	#
PRONGHORN		
094A		
	2.5	1
160A		
	291.4	2
	293	2
285D		
	197	1
287A		
	41.5	2
385A		
	110	3
RABBIT		
009A		
	32	1
094A		
	42277	7
	4.2-5.7	7
	6.1-19	12
RACCOON		
024A		
	288.5	2
	291.5	1
	295	4
	303.8	1
024G		
	311.4	1
025A		
	87	1
115A		
	10.4	1
	34.3	2
SKUNK		
024A		
	288.5	1
	292	1

Species	hwy mp	#
SKUNK		
094A		
	8	1
115A		
	10.2	2
UNK		
009A		
	29	1
	38.5	1
009C		
	77	1
	78	1
012A		
	32-52	8
021A		
	139	1
024A		
	240	1
	303.8	1
025A		
	18.5	3
	61	1
	71	1
	74	3
	75	2
	79.5	1
	81.3	1
	93.8	1
	94.5	2
	97	3
	105	2
	116.6	1
	159.5	2
	58.5-74.4	14
	59.5-74.4	4
	59.8-74	6

Region 2 road kill update, 2015
1/20/2016

Species	hwy mp	#
UNK		
045A		
6		2
047A		
0.6		1
.2-4.6		4
050A		
305		1
309		1
050B		
388.8		2
428		1
078A		
9-30		5
096A		
26.3-56.1		5
096D		
169-207.5		26
101A		
0		1
3		2
6		1
115A		
16.8		1
285D		
228		1
287A		
0-41		6

PATROLS REPORTING	
2401	2429
2403	2430
2404	2431
2405	2432
2406	2433
2407	2435
2408	2436
2409	2437
2410	2438
2411	2439
2412	2441
2413	2446
2414	2452
2415	2453
2416	2458
2417	2459
2419	2460
2420	2465
2421	2467
2423	2468
2424	2469
2426	2472
2427	2475
2428	

Region 3 road kill update, 2015

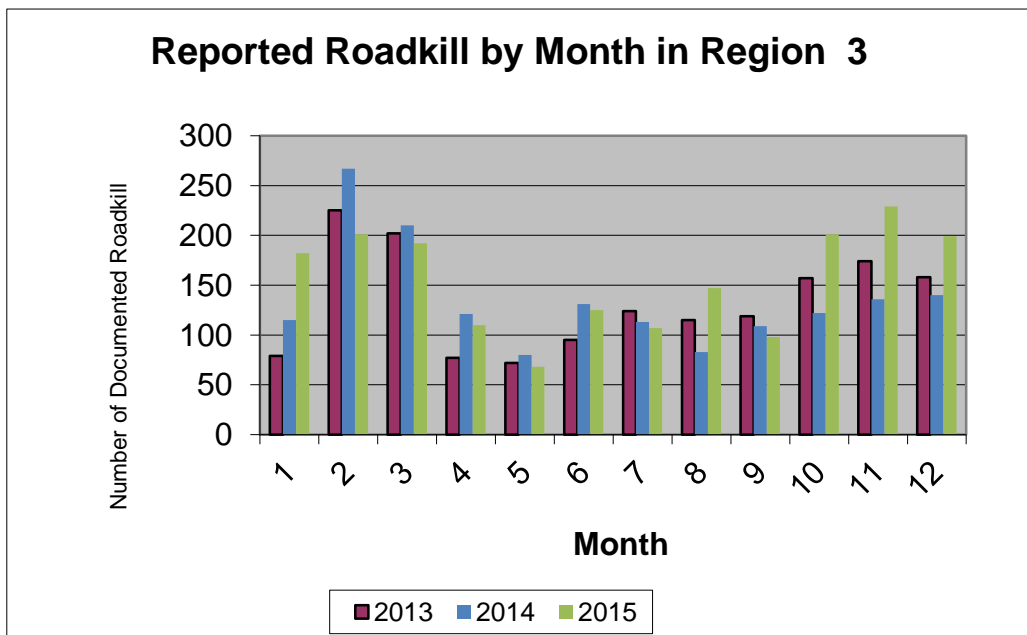
1/20/2016

Totals from CDOT personnel

Total number of reported animals killed 1859

Note: Regional boundaries were reconfigured in 2013

BY MONTH	2013	2014	2015
Jan	79	115	182
Feb	225	267	201
Mar	202	210	192
Apr	77	121	110
May	72	80	68
Jun	95	131	125
Jul	124	113	107
Aug	115	83	147
Sep	119	109	98
Oct	157	122	201
Nov	174	136	229
Dec	158	140	199
Total	1597	1627	1859



Region 3 road kill update, 2015

1/20/2016

2015 BY SPECIES	
BADGER	3
BEAR	6
BEAVER	8
BIRD	1
BOBCAT	1
CAT	13
COYOTE	24
DEER	1258
DOG	4
EAGLE	1
ELK	167
FOX	39
HAWK	2
LION	3
MARMOT	1
MINK	1
MOOSE	4
OWL	2
PORCUPINE	15
PRAIRIE DOC	3
PRONGHORN	2
RABBIT	23
RACCOON	73
SKUNK	68
SQUIRREL	1
UNK	136

SPECIES BY MONTH	
JAN	
BEAVER	1
CAT	1
COYOTE	2
DEER	120
DOG	1
ELK	25
FOX	3
RACCOON	7
SKUNK	1
UNK	21

SPECIES BY MONTH	
FEB	
COYOTE	1
DEER	158
ELK	20
FOX	3
LION	2
RACCOON	2
SKUNK	2
UNK	13
MARCH	
CAT	4
COYOTE	4
DEER	137
EAGLE	1
ELK	11
FOX	3
OWL	1
PORCUPINE	1
PRAIRIE DOG	3
RABBIT	5
SKUNK	12
UNK	10
APRIL	
COYOTE	2
DEER	94
ELK	6
RABBIT	2
RACCOON	3
SKUNK	1
UNK	2
MAY	
DEER	52
ELK	10
FOX	1
RABBIT	2
RACCOON	2
UNK	1

Region 3 road kill update, 2015

1/20/2016

SPECIES BY MONTH	
JUNE	
BADGER	2
BEAVER	1
BOBCAT	1
CAT	1
COYOTE	3
DEER	68
DOG	1
ELK	12
MOOSE	2
PORCUPINE	3
RABBIT	5
RACCOON	3
SKUNK	10
UNK	13
JULY	
BEAR	1
BEAVER	1
CAT	1
DEER	75
ELK	8
FOX	6
MOOSE	1
PORCUPINE	2
PRONGHORN	2
RABBIT	1
RACCOON	3
SKUNK	2
UNK	4
AUG	
BADGER	1
BEAR	3
BEAVER	1
BIRD	1
COYOTE	4
DEER	58
DOG	1
ELK	5
FOX	3
MARMOT	1
MINK	1
MOOSE	1

SPECIES BY MONTH	
AUG (CONT)	
PORCUPINE	3
RABBIT	5
RACCOON	15
SKUNK	17
SQUIRREL	1
UNK	26
SEPT	
BEAR	1
BEAVER	1
CAT	2
COYOTE	2
DEER	45
ELK	5
FOX	7
PORCUPINE	2
RACCOON	11
SKUNK	11
UNK	11
OCT	
BEAR	1
BEAVER	1
CAT	3
COYOTE	3
DEER	121
ELK	21
FOX	1
HAWK	1
LION	1
PORCUPINE	4
RABBIT	1
RACCOON	18
SKUNK	10
UNK	15
NOV	
BEAVER	2
CAT	1
COYOTE	1
DEER	188
DOG	1
ELK	13
FOX	4

Region 3 road kill update, 2015

1/20/2016

SPECIES BY MONTH	
NOV (CONT)	
RABBIT	1
RACCOON	7
SKUNK	2
UNK	9
DEC	
COYOTE	2
DEER	142
ELK	31
FOX	8
HAWK	1
OWL	1
RABBIT	1
RACCOON	2
UNK	11

hwy mp	#
006A	
10-20	1
006D	
90-100	14
100-110	1
006E	
140-150	32
150-160	22
160-170	28
170-180	2
006F	
210-220	6
220-230	1
006M	
60-70	1
009C	
80-90	17
90-100	6
009D	
100-110	11
110-120	30
120-130	44
130-140	38

hwy mp	#
013A	
0-10	10
10-20	4
20-30	4
30-40	2
40-50	4
50-60	12
60-70	13
70-80	52
80-90	31
013B	
80-90	3
90-100	25
100-110	34
110-120	21
120-130	10
014A	
0-10	3
024A	
140-150	1
150-160	2
160-170	2
170-180	4
180-190	1
034A	
0-10	3
040A	
0-10	2
10-20	3
20-30	4
30-40	10
40-50	11
50-60	1
70-80	12
80-90	34
90-100	64
100-110	18
110-120	10
120-130	37
130-140	12

Region 3 road kill update, 2015
1/20/2016

hwy mp	#
040A	
140-150	7
150-160	6
160-170	3
170-180	7
180-190	8
190-200	14
200-210	12
210-220	2
230-240	2
050A	
30-40	10
40-50	7
50-60	2
60-70	1
70-80	3
80-90	39
90-100	23
100-110	21
110-120	18
120-130	7
130-140	21
140-150	3
150-160	5
160-170	11
064A	
40-50	3
50-60	1
60-70	2
70-80	1
065A	
0-10	27
10-20	7
40-50	2
50-60	2
070A	
0-10	1
20-30	1
30-40	1
40-50	3

hwy mp	#
070A	
50-60	6
60-70	15
70-80	15
80-90	13
90-100	11
100-110	4
110-120	28
120-130	9
130-140	12
140-150	46
150-160	17
160-170	37
170-180	52
180-190	22
190-200	18
200-210	21
210-220	6
070G	
0-10	1
150-160	1
082A	
0-10	23
10-20	23
20-30	39
30-40	19
090B	
80-90	12
091A	
0-10	8
10-20	18
20-30	1
092A	
0-10	5
10-20	15
20-30	34
30-40	19
40-50	1

hwy mp	#
114A	
0-10	1
10-20	1
125A	
0-10	1
10-20	1
20-30	4
30-40	2
50-60	1
127A	
0-10	4
131B	
0-10	4
10-20	7
20-30	9
30-40	7
40-50	13
50-60	4
60-70	6
133A	
0-10	56
10-20	11
50-60	2
60-70	8
135A	
0-10	25
10-20	9
20-30	4
139A	
10-20	2
30-40	1
60-70	2
141A	
110-120	7
120-130	2
130-140	2
141B	
150-160	3
160-170	5

Region 3 road kill update, 2015
1/20/2016

hwy mp	#
149A	
110-120	1
325A	
0-10	1
330A	
0-10	16
10-20	3
340A	
0-10	7
10-20	2
347A	
0-10	3
394A	
0-10	1
550B	
110-120	29
120-130	45

Species hwy mp	#
BADGER	
050A 55	1
070A 145	1
170	1
BEAR	
009D 115	1
070A 124.8	1
128.2	1
162.8	1
172	1
186.5	1

Species hwy mp	#
BEAVER	
006D 97	1
024A 155.4	1
040A 102	1
105.4	1
163	1
070A 107.9	1
119.7	1
091A 0	1
BIRD	
091A 5.8	1
BOBCAT	
070A 66	1
CAT	
040A 141	1
050A 84	1
97	1
091A 22.4	1
092A 18	1
24	1
28	1
133A 15.6	1
135A 1.2	1
8	1

Species hwy mp	#
CAT	
141B 161	1
161.5	1
550B 125.9	1
COYOTE	
006E 154.8	1
155	1
162.5	1
013A 11.4	1
12.1	1
040A 14.8	1
25.4	1
050A 35	1
117.4	1
070A 35	1
46.9	1
84	1
151.7	1
163	1
167.5	1
171	1
179.2	1
185	1
193	1
196.7	1
125A 34.8	1
131B 1.6	1
20.5	1
550B 120	1

Region 3 road kill update, 2015
1/20/2016

Species	hwy mp	#
DEER		
006A		
	18.5	1
006D		
	95.3	1
	96	1
	96	2
	97	2
	97.5	1
	101	1
006E		
	142.87	2
	143	2
	145	2
	145.7	2
	146	2
	146.2	1
	146.4	2
	146.5	1
	147	3
	147.1	1
	147.2	1
	147.3	1
	147.5	2
	149	1
	149.6	1
	150	1
	151	2
	152	3
	152.5	1
	153.1	1
	153.5	1
	154	3
	156	1
	157	2
	158	1
	160.2	2
	160.6	1

Species	hwy mp	#
DEER		
006E		
	161	1
	161.05	1
	162.5	1
	162.7	2
	163.1	1
	163.7	1
	164	2
	165	3
	165.1	1
	165.9	1
	167	2
	171	1
	173.5	1
006F		
	212	2
	217.6	1
	221.9	1
006M		
	64.1	1
009C		
	83	2
	84.5	1
	85.5	1
	88.4	1
	92	2
009D		
	102.8	1
	103.7	1
	107.2	1
	107.3	1
	108.5	1
	109.1	1
	111.4	1
	112	1
	113.8	1
	114	2

Species	hwy mp	#
DEER		
009D		
	114.1	1
	115	5
	115.1	1
	115.2	1
	116	1
	117.3	2
	117.5	1
	118	1
	118.1	1
	118.2	1
	119	1
	119.2	1
	119.5	1
	120.5	1
	120.8	1
	123.5	1
	124	2
	124.2	1
	124.4	1
	125.3	1
	125.4	1
	125.9	1
	126	2
	126.2	2
	126.5	1
	126.7	1
	126.8	2
	127	1
	127.1	1
	127.6	1
	127.7	1
	127.9	1
	128	1
	128.1	1
	128.5	2
	128.9	3

Region 3 road kill update, 2015

1/20/2016

Species	hwy mp	#
DEER		
009D		
129.1		1
129.7		1
130		1
130.1		1
130.3		2
130.5		2
130.7		1
130.8		1
130.9		2
131		1
131.1		1
131.3		1
131.7		3
132.01		1
132.2		1
132.3		2
133		1
134		2
134.1		2
134.3		1
135.1		1
136.4		1
136.7		2
138.5		2
129.5-134		5
013A		
1		1
1.1		2
3		1
3.3		1
4.2		2
5.2		1
5.3		1
6.3		1
17.8		1
18		1

Species	hwy mp	#
DEER		
013A		
20		2
23		1
30.2		1
38		1
40.9		2
43.6		1
47.5		1
52.6		1
53		1
58.3		1
58.7		1
60.2		1
62.6		1
65.5		1
66.3		1
66.4		1
68		1
70.3		1
73		1
73.1		2
73.7		1
74		3
74.5		2
75		4
75.1		1
75.5		1
75.6		1
76		4
76.5		1
77		2
77.2		1
77.5		1
78		2
78.45		1
78.5		1
78.8		1

Species	hwy mp	#
DEER		
013A		
79		2
79.3		2
80		1
80.2		2
81.2		1
81.3		1
82.15		1
82.7		1
83.4		1
83.5		2
84		1
84.5		1
85.5		1
86		1
86.3		1
87.2		1
87.5		1
88		1
70-88		12
013B		
89.6		3
90		1
91		1
92		1
94		2
94.5		1
94.7		1
95		1
95.1		1
95.4		1
95.5		1
95.8		1
95.9		1
96.1		1
96.4		1
96.6		1

Region 3 road kill update, 2015
1/20/2016

Species	hwy mp	#
DEER		
013B		
97		1
97.7		1
98.9		1
99.7		1
100		1
100.2		1
101		1
102		2
102.6		1
103		1
103.2		1
103.3		1
104.3		1
105		2
105.8		1
106		3
107		2
107.1		1
108		2
108.5		1
108.6		1
109.8		1
110		2
111		1
111.1		1
111.2		1
112.1		1
112.5		1
112.8		1
113		1
113.5		1
114		1
114.6		1
116		1
122.5		1

Species	hwy mp	#
DEER		
013B		
123		3
123.5		1
125		1
127		1
024A		
144		1
154		1
163		1
171.8		1
173.6		2
174.3		1
185.2		1
034A		
6		1
7		1
040A		
0.1		1
3.1		1
17.5		1
37.8		4
38		1
38.7		2
39.9		1
40.8		1
41.7		1
44.5		1
45.7		1
47.5		1
49.4		1
51		1
73		1
74.5		2
75		1
76.3		1
77.5		2

Species	hwy mp	#
DEER		
040A		
78		1
78.2		2
80		2
80.3		1
82.2		1
82.7		1
83		1
84		1
84.6		1
85		1
86.8		1
87.5		1
88.9		1
90		1
91.9		2
92		6
92.1		1
92.2		1
92.4		1
92.5		2
92.8		1
92.9		1
93		2
93.1		1
93.5		2
93.9		1
94.1		1
94.5		1
95		1
95.3		1
96		3
96.1		2
96.5		1
96.8		1
97		3

Region 3 road kill update, 2015
1/20/2016

Species	hwy	mp	#
DEER			
040B			
97.5			1
97.6			1
97.7			1
98			1
99			1
100			1
101.2			1
102			1
103.2			1
106.5			1
111.3			1
118			1
121.4			1
123			1
127.5			1
128			1
129.8			1
134.5			1
135.5			1
136			2
151			1
157.8			1
169.4			1
171.2			1
177.2			1
178.9			1
179.001			1
179.4			1
179.5			1
180			1
180.1			1
182.8			1
183.4			1
183.9			1
186.8			1

Species	hwy	mp	#
DEER			
040B			
189.4			1
189.5			1
190.3			1
191.1			1
192.7			1
193			1
193.1			1
194.1			1
194.5			1
195.2			1
197.1			2
197.25			1
201			1
202.2			2
203.8			4
204			1
206			1
206.1			1
207			1
212			1
218.3			1
232			1
89-75			18
92-97			11
050A			
35.1			1
35.4			1
36.9			1
38.8			1
39			1
66.2			1
72.3			1
75			1
81			1
82			3

Species	hwy	mp	#
DEER			
050A			
82.3			2
82.5			2
84			4
85			3
86			1
87			2
88			4
89			2
94			2
95			3
96			1
96.5			7
99			3
100			1
101			2
102			3
107			5
109.9			1
110			1
110.5			1
111			1
112			2
113			2
114			1
114.8			2
114.9			2
115.8			1
117.4			1
119			1
120			1
121.3			1
123.9			1
126.9			1
127.2			2
130			1

Region 3 road kill update, 2015
1/20/2016

Species	hwy mp	#
DEER		
050A		
131.2		1
131.4		1
132		4
134		2
135.2		1
136		2
136.5		1
136.9		1
139		3
147		2
150		1
155		1
158		3
160		4
161		2
162		1
163		4
82-90		3
064A		
55.7		1
66.8		1
72.3		1
0-40		3
065A		
4.5		2
4.75		1
5		2
5.3		1
7		1
7.5		1
7.7		1
8.45		1
8.9		3
9		2
9.5		1
10.5		3

Species	hwy mp	#
DEER		
065A		
12		1
12.95		1
15.9		1
16		1
44.2		2
51.8		1
52.5		1
070A		
23.5		1
44.5		1
45.8		1
50		4
58		1
59		1
61		2
62		2
63.2		1
64		1
65.5		1
66		2
68.7		1
69		1
70.5		1
71		4
72		1
73.5		1
80		1
81		1
82		1
82.5		1
84		1
84.5		1
86		1
86.5		2
90.4		1
91		1

Species	hwy mp	#
DEER		
070A		
92		1
92.1		1
92.5		1
94		2
96.1		1
105		1
107.1		1
108		1
110		2
110.1		1
113.5		2
114		3
115		1
115.2		2
115.5		3
116		1
116.02		2
118.3		2
119		5
120.3		1
122.2		1
123.9		2
124		1
134		1
135.2		1
135.5		1
137		1
138.5		2
140		5
145.5		1
145.6		1
146		2
146.2		1
146.7		2
146.9		4
147		13

Region 3 road kill update, 2015
1/20/2016

Species	hwy	mp	#
DEER			
070A			
147.2			1
148			4
148.1			1
150.4			1
151.1			1
152			1
153			2
154			1
154.5			1
157			1
158.8			1
159			1
159.5			1
160.3			2
162			2
162.5			1
162.7			1
162.9			1
163			8
165			1
165.7			1
166			2
167			2
167.5			3
168			3
168.8			1
170			1
171			2
171.4			1
171.5			2
171.8			2
172			3
173			4
173.7			1
174			4
176			12
176.9			1

Species	hwy	mp	#
DEER			
070A			
177			2
178			3
178.8			1
180			3
180.1			1
181			1
181.8			1
182			3
184.5			1
185			4
187			1
190			2
192			1
195			1
195.5			2
196			1
199.5			1
204			3
204.5			1
205			2
205.5			1
206			3
67-86			3
72-78			4
070G			
0.1			1
159.2			1
082A			
2			2
2.4			2
2.5			2
3.5			1
4			1
5			1
5.5			1
6			3
6.5			1

Species	hwy	mp	#
DEER			
070A			
6.7			1
6.9			1
7			3
7.2			1
7.5			1
7.7			1
10			1
10.3			1
12			1
12.8			3
13			1
13.6			1
14			2
16			7
16.5			1
18			3
19			1
20			5
20.2			1
20.37			7
20.5			5
21			2
21.1			2
21.4			1
21.5			4
25			2
30			2
30.5			3
31			1
31.3			1
32			3
36.5			1
090B			
82			5
83			1
85			2

Region 3 road kill update, 2015
1/20/2016

Species	hwy mp	#
DEER		
091A		
	5.1	2
	5.8	1
	11.3	1
	13.7	2
	14.1	2
	15.1	2
	15.2	2
	16.1	1
	16.2	1
	17.5	1
	17.7	2
	2-20.4	3
092A		
	0.5	1
	4	1
	14.5	1
	15	2
	16	2
	17	1
	19	1
	20	2
	21	1
	22	2
	28	1
	29.2	1
	32	1
	35.6	1
	36	1
	36.1	1
	37.6	1
	38.5	1
	46	1
114A		
	4.1	1
	12	1

Species	hwy mp	#
DEER		
125A		
	17.25	1
	20	1
	22	1
	24.6	1
	29	1
127A		
	1.75	1
	1.8	1
	8.9	1
131B		
	2	1
	3	1
	6	1
	10	1
	15	1
	18	1
	19	2
	20.2	1
	39.5	1
	41.3	1
	42	1
	45	1
	63.7	1
133A		
	1	2
	2	1
	3	5
	5	2
	5.2	1
	6.3	1
	7	1
	7.8	1
	8	3
	8.4	2
	10	1
	11	1

Species	hwy mp	#
DEER		
133A		
	14	2
	15	1
	16	1
	18.5	1
	19	2
	51	1
	59.5	1
	63.8	1
	64.9	1
	65	1
	66	1
	67	1
	68.5	1
	1-7	11
	3-7	4
	4-13	6
135A		
	3.5	1
	6	2
	6.5	1
	7	1
	7.1	1
	7.2	3
	8	1
	8.1	1
	8.5	3
	11	1
	11.5	1
	12	2
	13	1
	18	2
	20	2
	24.5	2
	5-9	7
139A		
	30	1
	62	2

Region 3 road kill update, 2015
1/20/2016

Species	hwy mp	#
DEER		
141A		
112		1
139		1
141B		
159.5		1
149A		
115		1
325A		
1.8		1
330A		
0.6		1
3.5		2
4		1
5		2
5.5		1
6.5		2
8		1
10		1
10.4		1
340A		
1.5		2
6.2		1
7.2		1
8		2
8.1		1
10.2		1
11		1
347A		
2		1
394A		
4.2		1
550B		
118		17
118.2		1
119		10
119.7		1
120		11

Species	hwy mp	#
DEER		
550B		
120.5		2
121		5
122		8
123		4
124		4
125		1
118-121		5
DOG		
006E		
162		1
013A		
75.5		1
050A		
84		1
070A		
173		1
EAGLE		
070A		
6.5		1
ELK		
006E		
168.2		3
168.3		1
168.6		1
006F		
212.1		1
009C		
80		1
80.5		1
009D		
104.2		1
104.3		1
105.5		1
115		1
115.4		1
118.1		1

Species	hwy mp	#
ELK		
009D		
118.1		1
124.8		1
125.8		1
132		1
013A		
26.2		1
50		1
51.2		1
57		1
58		1
58.1		1
59		1
59.9		2
60.2		2
60.7		1
60.8		1
61.1		1
61.5		1
61.9		1
71		1
71.4		1
75		1
75.5		1
78.3		1
80.1		1
82.1		1
85.5		1
70-88.6		7
013B		
91		1
92		1
98.5		1
99		2
101.7		1
102		1
106.5		1

Region 3 road kill update, 2015

1/20/2016

Species	hwy	#
	mp	
ELK		
013B		
	108	1
	108.5	1
	108.8	1
	109	4
	113	1
	114	1
	114.8	2
	115.5	1
	118.5	1
	120.5	1
	122	1
	123	1
014A		
	0.5	1
	5	1
	6.4	1
024A		
	165.5	1
040A		
	27.1	1
	27.5	1
	36	1
	39.9	1
	42.3	1
	48	2
	79.5	1
	92	1
	95	1
	95.1	1
	95.2	1
	98	1
	98.4	1
	98.9	2
	100	1
	101	1
	115	1

Species	hwy	#
	mp	
ELK		
040A		
	117.6	1
	120	1
	121	1
	122.3	1
	137.1	1
	141.1	1
	151	1
	165	1
050A		
	49	1
	116.5	1
	119.6	1
	126.9	1
	135	1
	142	1
	135-156	4
070A		
	61	1
	66	1
	70	1
	112	1
	132.7	1
	133	1
	135.5	1
	157	1
	177.5	1
	177.9	1
	179.8	1
	191	3
	193.5	1
	201	1
	202	1
	204.5	1
082A		
	20.37	2
	20.4	1

Species	hwy	#
	mp	
ELK		
082A		
	24	1
	26.5	5
	28.8	1
	32.8	2
	35	2
	22.5-33	3
091A		
	6.5	1
	13.2	1
	13.3	1
125A		
	57.8	1
127A		
	5.7	1
131B		
	20	1
	21.93	1
	30	1
	61	1
	61.5	1
133A		
	1	2
	65	1
135A		
	16	2
139A		
	17	2
141A		
	122.8	1
	123	1
FOX		
006E		
	148	1
006F		
	214	2

Region 3 road kill update, 2015
1/20/2016

Species	hwy mp	#
FOX		
009C		
81.3		1
82.8		1
83.1		1
83.4		1
83.5		1
85.5		1
89.1		1
89.5		1
90.5		1
009D		
128.3		1
040A		
106.5		1
112.3		1
137		1
156.5		1
171.2		1
190.5		1
193		1
070A		
140.5		1
150		1
158		1
162.2		1
167		1
168		1
180		1
180.2		1
200.5		1
203		2
212		2
092A		
24		1
131B		
45.7		1
57		1

Species	hwy mp	#
FOX		
135A		
8		1
330A		
6.4		2
HAWK		
070A		
116		1
148.5		1
LION		
040A		
150.8		1
070A		
169.8		1
170		1
MARMOT		
131B		
45		1
MINK		
040A		
123		1
MOOSE		
009C		
84		1
009D		
106.5		1
070A		
211		1
125A		
35		1
OWL		
070A		
147		1
155		1
PORCUPINE		
009C		
80.3		1

Species	hwy mp	#
PORCUPINE		
040A		
15.1		1
98.5		1
119		1
127.2		1
130		1
154		1
050A		
87		1
135.5		2
070A		
186		1
133A		
3		2
330A		
3.2		1
10		1
PRAIRIE DOG		
050A		
83		3
PRONGHORN		
013A		
81.9		1
040A		
48.1		1
RABBIT		
006E		
153		2
040A		
138		1
142		1
143.2		1
144.5		1
204		1
070A		
138		1
192.5		1

Region 3 road kill update, 2015
1/20/2016

Species	hwy mp	#
RABBIT		
092A		
32		1
35		3
131B		
24		1
28		2
30		1
33		1
36		2
46		1
51		1
68.7		1
RACCOON		
006E		
146.6		1
147		1
147.1		1
148		1
149.9		1
150		2
040A		
102.5		1
105		3
106		1
106.1		1
109		1
111		1
111.5		1
114		1
119.5		1
120		1
122		1
123		1
124.4		1
124.5		1
125		1

Species	hwy mp	#
RACCOON		
040A		
127		1
131.8		1
134		1
138.5		1
050A		
38		3
48		1
070A		
88		1
117		1
120		2
141.5		1
144.5		1
147		1
165		1
205		1
206.5		1
082A		
4.2		1
11		1
090B		
84.5		1
87.1		1
092A		
1.5		1
17		5
21		4
29		2
35		1
131B		
45		2
47		1
64		1
133A		
1.5		1
9		2
1-15		3

Species	hwy mp	#
RACCOON		
141B		
158.9		1
160		1
161.1		1
550B		
125.6		1
SKUNK		
006D		
95.4		1
95.9		1
96.1		1
96.3		1
96.5		1
96.9		1
040A		
97.6		1
98.5		1
99.5		1
101.5		1
120.3		1
121.5		1
122		2
123.4		1
124		2
124.1		1
126		1
126.3		1
128		1
128.5		1
128.6		1
136.2		1
140.3		1
236.5		1
050A		
38		1
42		1
87		1

Region 3 road kill update, 2015
1/20/2016

Species	hwy mp	#
SKUNK		
070A		
	96.2	1
	139	1
092A		
	10	2
	20	2
	21	6
	25	1
	32	1
	35	5
131B		
	15.8	2
	20	1
	20.1	1
	37	1
	40	1
	43.5	1
	45	2
	54.5	1
	58.2	1
	67.9	1
133A		
	5	1
	1-15	4
135A		
	4	1
330A		
	4.5	1
	4.9	1
SQUIRREL		
040A		
	145	1
UNK		
006E		
	146	1
	148.5	1
	162.1	1
	163	1

Species	hwy mp	#
UNK		
009C		
	91	2
	95.3	1
009D		
	108.9	1
	115.9	1
	118.2	1
	118.8	1
	120.9	1
	124	3
	125.5	1
	102-127	4
013A		
	81.9	1
013B		
	111	2
034A		
	4	1
040A		
	28.9	1
	45.9	1
	79.3	1
	120.3	6
	128	1
	197	1
	75-97.6	4
050A		
	53	1
	76	1
	83	2
	83.8	1
	86	1
	88	1
	90	1
	95	1

Species	hwy mp	#
UNK		
050A		
	97	2
	99	2
	100	3
	135	1
	94-114.9	6
064A		
	64.4	1
065A		
	1.5	1
	6	3
	7.8	1
	8	1
	1.5-13	5
070A		
	67	1
	84.5	1
	87	1
	97	2
	138.8	1
	155.2	1
	169	1
	171	4
	182	2
	190	1
	195	1
	199	1
	201.4	1
	201.5	1
	207.2	1
	211	1
	212	2
	134-146	4
082A		
	33.9	1
090B		
	82	1
	84	1

Region 3 road kill update, 2015

1/20/2016

Species	hwy	mp	#
UNK			
091A			
	6		1
092A			
	0.5		1
	4		1
	21		3
	21.5		3
	25		2
	27.2		1
	32		1
	36		1
125A			
	7		1
133A			
	7		1
	14		1
	61.5		1
141A			
	118		6
	131		1
141B			
	159.5		1
	161		1
330A			
	0.06		1
347A			
	1.6		2
550B			
	120		1
	125		1

PATROLS REPORTING	
3201	3232
3202	3233
3203	3240
3204	3241
3205	3242
3206	3243
3207	3244
3208	3245
3209	3246
3210	3247
3211	3251
3212	3252
3214	3253
3215	3283
3216	3603
3217	3604
3218	3605
3219	3608
3220	3612
3221	3613
3222	3614
3225	3619
3226	3621
3227	3623
3228	3627
3229	3633
3230	3636
	3637

Region 4 road kill update, 2015

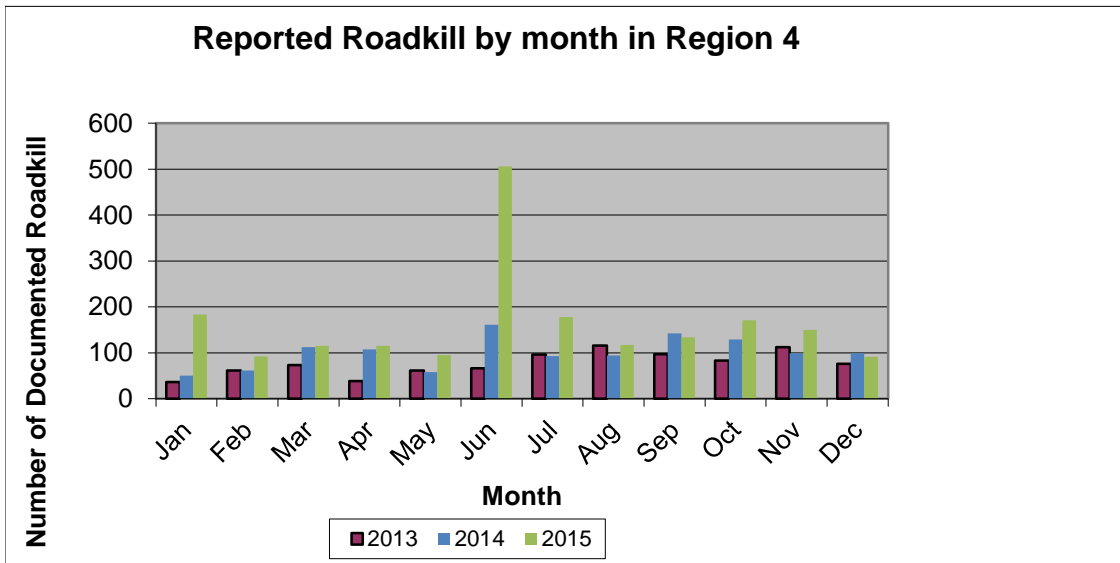
1/20/2016

Totals from CDOT personnel

Total number of reported animals killed 1947

Note: Regional boundaries were reconfigured in 2013

BY MONTH	2013	2014	2015
Jan	36	50	183
Feb	61	61	92
Mar	73	112	115
Apr	38	107	115
May	61	58	95
Jun	66	161	506
Jul	96	93	178
Aug	116	94	117
Sep	97	142	134
Oct	83	129	171
Nov	112	99	150
Dec	76	99	91
Total	915	1205	1947



Region 4 road kill update, 2015

1/20/2016

2015 BY SPECIES	
ANTELOPE	1
BADGER	23
BEAR	1
BIRD	9
BOBCAT	1
CAT	43
COW	1
COYOTE	34
DEER	482
DOG	12
DUCK	2
ELK	17
FOX	78
GOAT	1
HAWK	8
LION	1
MOUSE	1
OPOSSUM	20
OWL	6
PHEASANT	48
PORCUPINE	3
PRAIRIE DOG	234
PRONGHORN	5
RABBIT	325
RACCOON	127
SKUNK	63
SNAKE	26
SQUIRREL	2
TOAD	2
TURKEY	11
TURTLE	1
UNK	359

Species by Month	
Jan	
BADGER	2
BIRD	1
CAT	4
COYOTE	3
DEER	24
DOG	6
DUCK	1
ELK	4
FOX	4
HAWK	1
OWL	1
PHEASANT	2
PRAIRIE DOG	2
RABBIT	69
RACCOON	6
SKUNK	2
TURKEY	1
UNK	50
FEB	
BADGER	1
CAT	3
COYOTE	4
DEER	15
DOG	1
FOX	1
HAWK	1
OPOSSUM	1
PHEASANT	1
PRAIRIE DOG	2
RABBIT	35
RACCOON	10
SKUNK	6
TURKEY	1
UNK	10

Region 4 road kill update, 2015

1/20/2016

SPECIES BY MONTH	
MARCH	
BADGER	2
CAT	4
COYOTE	5
DEER	25
FOX	2
OPOSSUM	1
PHEASANT	5
PRONGHORN	1
RABBIT	27
RACCOON	8
SKUNK	9
UNK	26
APRIL	
ANTELOPE	1
BADGER	2
CAT	1
COYOTE	3
DEER	31
DOG	1
DUCK	1
FOX	3
OPOSSUM	2
OWL	4
PHEASANT	5
PORCUPIN	1
RABBIT	30
RACCOON	10
SKUNK	8
SNAKE	1
SQUIRREL	1
TURKEY	1
UNK	9

SPECIES BY MONTH	
MAY	
BOBCAT	1
CAT	5
DEER	31
ELK	2
FOX	6
OPOSSUM	2
OWL	1
PHEASANT	6
PRONGHORN	1
RABBIT	20
RACCOON	3
SKUNK	6
SNAKE	1
UNK	10
JUNE	
BADGER	4
CAT	9
DEER	59
DOG	1
ELK	3
FOX	3
PHEASANT	1
PRAIRIE DOG	225
PRONGHORN	2
RABBIT	16
RACCOON	1
SKUNK	4
SNAKE	12
SQUIRREL	1
TURTLE	1
UNK	164

Region 4 road kill update, 2015

1/20/2016

SPECIES BY MONTH	
JULY	
BADGER	4
BEAR	1
BIRD	1
CAT	3
COW	1
COYOTE	1
DEER	39
FOX	3
OPOSSUM	3
PHEASANT	5
PORCUPIN	1
PRAIRIE DC	3
RABBIT	26
RACCOON	30
SKUNK	5
SNAKE	8
UNK	44
AUG	
BADGER	5
CAT	3
COYOTE	6
DEER	27
DOG	1
ELK	1
FOX	10
HAWK	2
OPOSSUM	2
PHEASANT	6
RABBIT	20
RACCOON	13
SKUNK	6
SNAKE	3
TURKEY	2
UNK	10

SPECIES BY MONTH	
SEPT	
BIRD	1
CAT	3
COYOTE	2
DEER	44
DOG	1
ELK	3
FOX	19
GOAT	1
HAWK	2
LION	1
OPOSSUM	1
PHEASANT	3
RABBIT	17
RACCOON	18
SKUNK	9
SNAKE	1
TURKEY	2
UNK	6
OCT	
BIRD	3
CAT	5
COYOTE	2
DEER	63
ELK	2
FOX	20
HAWK	2
MOUSE	1
OPOSSUM	2
PHEASANT	6
RABBIT	25
RACCOON	15
SKUNK	4
TOAD	2
UNK	19

Region 4 road kill update, 2015
1/20/2016

SPECIES BY MONTH	
NOV	
BADGER	1
BIRD	3
CAT	1
COYOTE	5
DEER	79
FOX	5
OPOSSUM	6
PHEASANT	3
PORCUPIN	1
PRAIRIE DC	2
RABBIT	23
RACCOON	8
SKUNK	1
TURKEY	3
UNK	9
DEC	
BADGER	2
CAT	2
COYOTE	3
DEER	45
DOG	1
ELK	2
FOX	2
PHEASANT	5
PRONGHORN	1
RABBIT	17
RACCOON	5
SKUNK	3
TURKEY	1
UNK	2

hwy mp	#
001A	
0-10	2
006I	
340-350	15

hwy mp	#
006J	
370-380	1
380-390	9
390-400	3
400-410	7
410-420	8
420-430	16
430-440	10
440-450	6
450-460	4
460-470	1
007A	
0-10	1
10-20	4
20-30	3
30-40	3
007C	
50-60	2
011A	
0-10	1
014B	
90-100	3
014C	
140-150	5
150-160	1
200-210	1
220-230	1
230-240	4
023A	
10-20	1
024G	
350-360	16
360-370	2
370-380	3
025A	
230-240	1
240-250	1
250-260	6
260-270	20
270-280	11
280-290	14
290-300	5

hwy mp	#
034A	
0-10	2
60-70	1
70-80	2
80-90	13
90-100	10
100-110	168
110-120	4
120-130	2
130-140	1
140-150	11
034B	
150-160	3
160-170	3
170-180	2
180-190	16
190-200	5
200-210	13
210-220	4
220-230	16
230-240	5
240-250	15
250-260	18
270-280	1
034D	
0-10	39
036A	
0-10	1
036B	
0-10	3
10-20	13
20-30	71
30-40	11

Region 4 road kill update, 2015
1/20/2016

hwy mp	#
036D	
100-110	1
130-140	2
150-160	1
160-170	1
170-180	9
180-190	25
190-200	14
200-210	14
210-220	16
220-230	18
230-240	1
040H	
380-390	1
390-400	1
400-410	1
420-430	5
430-440	13
440-450	7
450-460	7
460-470	23
470-480	34
480-490	21
052A	
0-10	35
20-30	4
30-40	4
40-50	1
60-70	2
70-80	1
052B	
80-90	5
90-100	1
100-110	4
059A	
0-10	1
30-40	2
60-70	39

hwy mp	#
059B	
70-80	10
80-90	5
90-100	5
100-110	12
110-120	9
120-130	13
130-140	11
140-150	5
150-160	1
170-180	1
060B	
10-20	7
061A	
10-20	4
20-30	4
40-50	1
063A	
10-20	7
20-30	2
30-40	3
40-50	5
50-60	1
066B	
20-30	2
30-40	21
40-50	2
50-60	1
070A	
360-370	2
370-380	3
380-390	7
390-400	5
410-420	4
071D	
130-140	2
170-180	2
071E	
170-180	1
071F	
210-220	1
220-230	1

hwy mp	#
076A	
20-30	2
30-40	4
40-50	4
50-60	7
60-70	4
70-80	10
80-90	18
90-100	16
100-110	13
110-120	9
120-130	3
130-140	4
140-150	2
160-170	2
170-180	6
180-190	2
085C	
230-240	3
240-250	15
250-260	11
260-270	2
085L	
260-270	1
270-280	2
280-290	1
290-300	4
086A	
20-30	1
30-40	2
093A	
10-20	1
094A	
80-90	1
113A	
0-10	8
10-20	3
119A	
20-30	1
30-40	1
40-50	1

Region 4 road kill update, 2015

1/20/2016

hwy mp	#
119B	
40-50	166
50-60	9
119C	
60-70	1
138A	
0-10	10
10-20	9
50-60	1
144A	
10-20	2
20-30	4
80-90	2
257A	
0-10	54
10-20	52
287C	
320-330	1
330-340	2
350-360	9
360-370	24
370-380	15
380-390	20
385B	
130-140	20
140-150	49
385C	
120-130	1
140-150	1
150-160	45
160-170	16
200-210	23
210-220	43
385D	
220-230	5
230-240	4
240-250	11
250-260	4
270-280	7
280-290	6
290-300	3
300-310	2

hwy mp	#
392A	
90-100	1
100-110	1
392B	
100-110	17
110-120	21
130-140	1
402A	
0-10	1
30-40	2
50-60	3

Species hwy mp	#
ANTELOPE	
385B	
137.7	1
BADGER	
006J	
416.8	1
419.5	1
425.8	1
034B	
233.7	1
240.6	1
036D	
195.8	1
196.4	1
219.8	1
223.6	1
040H	
460.7	1
462.4	1
466.3	1
467.4	1
059B	
110.9	1
127	1
144.8	1

Species hwy mp	#
BADGER	
061A	
40.9	1
076A	
74	1
90	2
95	1
106.7	1
385C	
162.4	1
BEAR	
034A	
86	1
BIRD	
006I	
345.92	6
036D	
23.6	1
182.3	1
059B	
129.7	1
BOBCAT	
036D	
188	1
CAT	
034B	
159	3
181.001	1
209.81	2
219.4	1
036D	
186.7	1
203.5	1
209.2	1
040H	
469	1
052B	
87.116	1
88	1

Region 4 road kill update, 2015

1/20/2016

Species	hwy mp	#
CAT		
059A		
65		1
65.1		2
059B		
106		1
107.1		1
107.2		1
108.7		1
124.1		1
130.6		1
076A		
70		1
75		1
77.5		1
83		2
85.9		1
88.6		1
90.2		1
102		1
085C		
263		2
138A		
3.2		1
257A		
15		1
385B		
146.1		1
147		1
148.2		1
149		1
385C		
156.6		1
167.1		1
214.8		1
385D		
297.7		1
COW		
034A		
0.4		1

Species	hwy mp	#
COYOTE		
006J		
412		1
425.9		1
443.1		1
449.9		1
036B		
32.2		1
036D		
184.5		1
221.1		3
222.1		1
222.7		1
040H		
464		1
480.7		1
059A		
62.7		1
63.2		1
65.9		1
059B		
74.5		1
94.1		1
110		1
063A		
45.6		1
076A		
75		1
95		1
103.3		1
104.3		1
165.5		1
178		1
138A		
0.2		1
385B		
141.8		1
145.2		1

Species	hwy mp	#
COYOTE		
385C		
212.5		1
216.8		1
385D		
233.2		1
271.3		1
272.1		1
DEER		
001A		
2.25		1
8		1
006J		
383.4		1
385.5		1
387.5		3
387.9		2
395		1
398		2
402		1
402.9		1
405.79		1
415.7		2
426.8		1
442.3		1
445.7		1
452.4		1
453.31		1
453.5		1
007A		
6.3		1
11		1
14		1
15		1
16.2		1
21.6		1
30.1		1
31		1
31.5		1

Region 4 road kill update, 2015
1/20/2016

Species	hwy mp	#
DEER		
007C		
55		1
56		1
011A		
0.7		1
014B		
90.1		1
93.7		1
96		1
014C		
140.4		1
140.529		1
149.404		1
154.21		1
204		1
221.8		1
231.7		1
235		3
023A		
14		1
024G		
352.1		1
353.1		1
353.3		1
353.6		1
354.4		1
354.5		1
354.7		1
354.9		1
355		1
355.1		2
355.5		4
360.3		1
362		1
370.6		1
372.5		1

Species	hwy mp	#
DEER		
025A		
235		1
241		1
250		3
256.6		1
262		1
262.5		2
264		1
265		1
265.5		1
265.7		1
266		2
271		1
271.4		1
272.1		1
274		1
274.5		1
275.3		1
275.5		1
276.3		1
279		1
280		1
281		5
281.4		2
282.5		2
283		1
285		1
286		1
287.5		1
292		1
293.2		1
296.3		1
298		1
257-271		7
034A		
5.55		1
79.1		1
83.9		1
85.3		1
86.5		1
86.9		1

Species	hwy mp	#
DEER		
034A		
87.7		1
88.5		1
89		1
89.25		1
89.5		1
97		1
103.9		1
121		2
140		1
140.5		3
141.2		1
142		3
034B		
160		1
171.3		1
181.001		1
182.6		1
187		1
188.5		2
190.2		1
204		1
245		1
246		3
248		1
248.2		1
248.5		4
249.1		1
249.2		1
249.5		1
251.2		1
251.3		1
251.5		2
251.8		1
252		2
252.5		1
258.5		1
034D		
1		1
036A		
2.1		1

Region 4 road kill update, 2015

1/20/2016

Species	hwy mp	#
DEER		
036B		
	2	1
	4.04	1
	10	1
	12	2
	12.1	1
	14.5	1
	14.6	1
	16	1
	17.7	1
	17.8	1
	18.5	2
	19.4	1
	19.7	1
	20	1
	22.3	1
	23	1
	25.1	3
	25.9	1
	26.2	2
	26.3	1
	28.2	1
	29.4	1
	33.6	2
	33.7	1
	37.602	1
	38.9	1
036D		
	138	1
	150.9	1
	178.049	1
	178.1	1
	178.2	1
	182.4	1
	185	1
	188.6	1
	188.8	1
	200.8	2
	218.9	1
	232.2	1

Species	hwy mp	#
DEER		
040H		
	389.7	1
	392.3	1
	400.3	1
	423.5	1
	426.1	2
	428.7	1
	429.4	1
	431.6	1
	431.7	1
	432.2	1
	433	1
	433.5	2
	435.1	2
	435.7	1
	437.5	1
	438.8	1
	443.1	1
	443.8	1
	445.7	1
	446.2	1
	461.2	1
	464.8	2
	466.5	1
	486.7	1
052A		
	6	1
	37	1
	38.2	1
	41.2	1
	62	1
	64.2	1
052B		
	89.5	1
	89.9	1
059A		
	38.3	2
	60.3	2
	60.5	1
	61.4	1
	61.5	1
	65.5	1
	66.7	1

Species	hwy mp	#
DEER		
059B		
	109.3	1
	121.8	1
	139.9	1
060B		
	15	1
	15.46	1
	15.5	1
	18	1
061A		
	16.5	1
063A		
	30.2	1
	56.4	1
066B		
	29.5	1
	30	1
	30.8	1
	36.1	1
	47.5	1
070A		
	363	1
	368	1
	370	1
	375	1
	379	1
	381.4	1
	386	1
	388	1
	388.7	4
	396	2
	397	2
	413	2
	417	1
071E		
	177	1
071F		
	212	1
	228	1

Region 4 road kill update, 2015

1/20/2016

Species	hwy mp	#
DEER		
076A		
31.1		1
31.2		1
35.4		1
44.3		2
55		1
56.9		1
61		1
64.8		1
67.5		1
68		1
72		1
77		1
83		2
83.5		1
86.4		1
87.9		1
88.6		1
90		1
90.2		1
91		1
92		1
96.8		1
102		1
102.2		1
104.9		1
113		1
113.2		1
114.3		1
116.3		1
117.1		1
117.4		3
119.3		1
120.4		1
121		1
127.4		1
133		1
137.1		2
138.1		1

Species	hwy mp	#
DEER		
076A		
140.2		1
144.5		1
160		1
176		1
180.6		1
182		1
085C		
238.3		1
243.6		1
244		1
248		1
257.3		1
085L		
269		1
289		1
290		2
293		2
086A		
26.5		1
30		1
32		1
094A		
83.9		1
113A		
5.6		1
119A		
28		1
38.5		1
40.6		1
119B		
44.5		1
119C		
61.5		1

Species	hwy mp	#
DEER		
138A		
7.8		1
8.5		1
12.6		1
15.5		1
17.1		1
55.5		1
2-19		3
144A		
16.8		1
17		1
21		1
23.2		1
26.4		1
257A		
0.588		1
7		1
8.22		1
9		1
287C		
356.3		1
357.5		1
358		1
359		1
359.1		1
360		1
360.5		1
361.9		1
362.4		1
363		1
363.5		2
363.8		1
364		5
364.2		1
364.5		2
364.8		1
365		1
366.8		1

Region 4 road kill update, 2015
1/20/2016

Species	hwy mp	#
DEER		
287C		
367		1
367.1		1
369.2		1
369.8		1
370.1		1
372		2
372.6		1
373		1
373.3		1
373.9		1
374		1
375		1
378		1
379.6		1
379.7		1
379.8		2
380.5		2
380.8		2
380.9		1
381.4		1
382		3
382.1		2
382.5		2
383		2
383.7		1
384		1
384.3		1
385		1
385B		
142.6		1
385C		
207.509		3
208.3		1
210.2		1
210.8		1
385D		
220		1
221		2

Species	hwy mp	#
DEER		
385D		
232		1
233		1
236.4		1
241		1
241.9		1
242.7		1
243.5		1
243.8		1
244.2		1
244.4		1
249		1
250.2		1
251.8		1
254		1
259		1
271.2		1
271.9		1
284.8		2
304.8		1
309.5		1
392A		
103		1
402A		
1.85		1
DOG		
006J		
431.4		1
025A		
262		1
034A		
98		1
034B		
181.0		2
059A		
66.4		1
059B		
112.6		1

Species	hwy mp	#
DOG		
061A		
21.75		1
070A		
411		1
076A		
39.1		1
85		1
385D		
242.4		1
DUCK		
034A		
105		1
385B		
145.9		1
ELK		
025A		
250.35		1
036B		
24.2		1
25.1		1
25.7		2
25.8		1
26		2
26.1		1
26.5		1
066B		
32.1		1
32.2		1
076A		
25.2		1
287C		
328.9		1
330.8		1
358.5		1
359		1

Region 4 road kill update, 2015

1/20/2016

Species	hwy	#
	mp	
FOX		
006J		
413		1
425		1
034B		
184		1
206		1
209.8		1
036D		
179.1		1
179.3		1
199.3		1
201		1
218.9		1
221.8		1
040H		
432.8		1
459.652		1
462.5		1
463.5		1
464.2		1
465.5		1
470.5		1
471.8		1
472.5		1
473		1
474.4		1
474.6		1
474.8		1
476.3		1
476.8		1
477.9		1
478.8		1
479.4		1
482.3		1
482.9		1
484.3		1
059A		
62.3		1

Species	hwy	#
	mp	
FOX		
059B		
96		1
137.4		1
061A		
20		1
063A		
12		1
18.0		1
071D		
174		1
076A		
51.7		1
113A		
8.9		1
385B		
135.4		1
135.5		1
135.9		1
136.5		1
137.2		2
139.5		1
139.7		1
139.8		1
140.1		1
140.2		1
140.4		1
140.5		1
140.9		1
141.6		1
142.8		1
144		1
144.5		1
144.7		1
145		1
145.2		1
147.8		2
148.4		1

Species	hwy	#
	mp	
FOX		
385C		
150.3		1
153.7		1
153.9		1
154.3		1
154.6		1
155.9		1
158.2		1
158.5		1
161.7		1
164.3		1
167.1		1
215.4		1
385D		
277.8		1
GOAT		
034A		
86.75		1
HAWK		
006J		
407.9		1
036D		
209.7		2
040H		
471.8		1
059A		
63.8		1
65		1
063A		
48		1
287C		
363		1
LION		
287C		
380.9		1
MOUSE		
006I		
345.92		1

Region 4 road kill update, 2015

1/20/2016

Species	hwy mp	#
OPOSSUM		
036D		
209		1
209.8		1
052B		
89.9		1
063A		
18.001		1
23.7		1
25		1
47.8		1
113A		
0.5		3
138A		
11.7		1
144A		
26.5		1
385C		
207.509		1
209.6		1
209.8		1
210		1
210.1		1
210.3		1
210.5		1
210.6		1
OWL		
034A		
139.1		1
036D		
218.1		1
385C		
215		4
PHEASANT		
006J		
425.4		1
425.8		1
428.1		1
428.7		1
433.4		1

Species	hwy mp	#
PHEASANT		
006J		
433.7		1
463.4		1
034B		
211.5		1
237.4		2
209-237		2
036D		
182.5		1
185.7		1
188.8		1
196.7		1
198.6		1
211		1
218.6		1
222.1		1
224.1		1
040H		
465.4		1
467.4		1
471.3		1
471.4		1
471.7		1
472.1		1
475.2		1
480.4		1
480.7		1
486.8		1
059B		
93.1		1
130.4		1
144.8		1
155.6		1
076A		
175.2		1
385B		
149.7		1

Species	hwy mp	#
PHEASANT		
385C		
150.251		1
153.6		1
154.8		1
154.9		1
209		2
210.3		1
216.7		1
385D		
272.1		1
287.4		1
293		1
PORCUPINE		
036D		
210		1
059A		
67		1
385C		
212.5		1
PRAIRIE DOG		
034A		
97.79		2
97.8-107		15
98.5-107		7
034D		
0-4.6		9
036B		
30.1		2
076A		
79		2
113A		
13.6		2
119B		
45-54		163
257A		
0		10
18.8		2
0-18.4		7

Region 4 road kill update, 2015

1/20/2016

Species	hwy mp	#
PRAIRIE DOG		
385B		
135.8		1
385C		
159.9		1
164.1		1
164.8		1
165.5		1
166.5		1
166.8		1
392B		
106		3
115.4		3
PRONGHORN		
024G		
358.7		1
372.3		1
025A		
292.58		1
287C		
377		1
392B		
138		1
RABBIT		
006I		
345.92		6
006J		
406.1		1
415		1
418		1
422.1		1
425.3		1
425.4		1
425.8		1
426		1
426.6		3
430.6		2
431.2		1
431.3		1
433.5		1
436.1		1
445		2

Species	hwy mp	#
RABBIT		
034A		
98.54		4
107		6
97.47-107		12
97.8-107		24
034B		
174		1
181.0		4
189		1
192		1
194		1
200		2
210		1
217.4		1
220		3
224.3		1
224.4		1
226.3		1
227.4		1
236.7		1
237.4		1
241.6		1
253.6		1
12704		1
209-237		4
034D		
0.2		3
1		3
3		2
036D		
108.3		1
178.5		1
180.2		1
183.3		2
183.8		1
184.1		1
185.1		1
185.3		1
192.7		1

Species	hwy mp	#
RABBIT		
036D		
197		1
197.6		1
198		1
198.7		1
199.3		1
202.3		1
204		1
207.4		1
209.7		1
211.5		1
213		1
215.3		1
215.6		1
216.7		1
219.1		1
219.7		1
222		1
222.6		1
222.8		1
223		1
223.5		1
223.6		1
040H		
452.5		1
459.652		4
465.3		1
468.7		1
470.7		1
471		1
471.1		1
471.2		1
472		1
472.2		1
472.3		2
472.4		2
473.5		1
473.6		1
475.1		1

Region 4 road kill update, 2015

1/20/2016

Species	hwy mp	#
RABBIT		
040H		
	477.4	1
	480.3	1
	481.8	1
	482.8	1
	483.3	1
	485.2	1
	485.9	1
	486	1
	486.7	1
	486.8	1
052B		
	95	1
	100	1
	103	1
	104	1
	105	1
059A		
	5.5	1
	60.333	1
	60.5	1
	61.2	1
	62.1	1
	62.8	1
	63.1	1
	63.7	1
	63.8	1
	64.1	1
	64.3	1
	65.4	1
	65.8	2
059B		
	76	1
	77.8	1
	78	1
	82.8	1
	104.3	1

Species	hwy mp	#
RABBIT		
059B		
	113.6	1
	114.9	1
	116.9	1
	120	2
	121.2	1
	124.6	1
	128.5	1
	128.6	1
	129	1
	129.8	1
	133.7	1
	134.4	1
	139.1	1
	139.7	1
	139.8	1
	146.1	1
	149.2	1
	74-105	2
061A		
	10	1
	11	2
	21.7	1
063A		
	10	1
	18.0	1
	30.3	1
	48.5	2
076A		
	82	1
	85.6	1
	93.2	1
	98.2	1
	98.9	1
	101.6	1
	104.2	1
	104.9	1
	106.5	1
	173	1
	927	1

Species	hwy mp	#
RABBIT		
113A		
	1.4	1
	13	1
138A		
	6.4	2
	14.5	1
257A		
	2	4
	12	4
	13	2
	16	2
	17.6	1
	6-18	18
385B		
	135.414	3
	138.7	1
	141.2	1
	141.99	1
	143.5	1
	143.6	1
	145	1
	145.5	4
	145.7	1
	147	1
	147.1	1
	147.6	1
	148.1	1
	148.2	1
	148.7	1
	148.8	1
	149.6	1
385C		
	148.7	1
	150.251	2
	150.751	1
	151.9	1
	152	1
	152.3	1
	152.4	3
	153.9	1

Region 4 road kill update, 2015

1/20/2016

Species	hwy mp	#
RABBIT		
385C		
	155.5	1
	157	1
	158.2	1
	158.3	1
	159.1	1
	159.4	2
	159.5	2
	162.4	1
	208.7	1
	210.3	2
	211.6	1
	212.7	1
	213.5	1
	213.6	1
	214.1	1
	215.2	1
385D		
	243.4	1
	285.4	1
	288.4	1
	293.5	1
RACCOON		
006J		
	389.7	1
	400.2	1
	402.5	1
	455.7	1
034A		
	100	1
034B		
	181.001	1
	194	1
	206	1
	229.4	1
	256.3	1
	257.2	1
	258.3	1
	259.5	1
034D		
	4.5	2

Species	hwy mp	#
RACCOON		
036B		
	7.5	1
	25	1
	30.1	2
036D		
	172.3	1
	180.3	1
	184.2	1
	185.6	1
	195.8	1
	209.3	1
	214	1
	221.3	1
040H		
	436.9	1
	462	1
	489.5	1
052A		
	11.2-29	4
059A		
	60.6	1
	61.2	1
059B		
	87.5	1
	88.3	1
	104.3	1
	104.5	1
	112.2	1
	117.9	1
	126.2	1
	172.5	1
066B		
	30.1	2
	31	1
	31.3	1
	31.5	1
	32	1
	32.1	2
	39.6	1
	49	1

Species	hwy mp	#
RACCOON		
076A		
	46.2	1
	76.8	1
	85	2
	85.5	1
	88.4	1
	94.6	1
085C		
	236.04	2
	250.46	1
	253.755	2
	254	2
	255	1
113A		
	4.4	1
119B		
	45-54.4	3
138A		
	3	4
	17.5	1
144A		
	84.5	1
	85	1
257A		
	1.6	1
	2	3
	5.14	2
	5.5	1
	11	5
	15.6	1
287C		
	356	1
385B		
	145.5	1
	145.7	1
	147	1
	148.2	1
	149.8	1

Region 4 road kill update, 2015

1/20/2016

Species	hwy mp	#
RACCOON		
385C		
	156.7	1
	156.8	1
	157.3	1
	163.7	1
	167.7	1
	207.509	2
	208	1
	208.3	2
	209.3	1
	209.8	1
	210	2
	210.1	1
	210.2	3
	210.3	4
	210.9	1
	213.6	1
385D		
	225.3	1
	227.6	1
	243.7	1
	274.7	1
SKUNK		
034B		
	165	2
	198	1
	203	1
	209	1
	209.8	1
	227.6	1
	251.4	1
	256.3	1
	258.5	1
	209-237	1
036D		
	179.7	1
	180.3	1
	182.3	1
	186.5	1
	194.8	1
	199.8	1
	221.5	1

Species	hwy mp	#
SKUNK		
040H		
	478.8	1
	482.5	1
	483.5	1
	486.1	1
052A		
	34	2
059A		
	62.5	1
	64.1	1
	65.1	1
	66.1	1
	66.9	1
059B		
	78	1
	92.8	1
	100.3	1
	102.6	1
	103.9	1
	107.2	1
	118.2	1
	142.3	1
061A		
	25	1
070A		
	394.4	1
071D		
	138	1
076A		
	91.8	2
	105.6	1
	178	1
085C		
	250.5	3
113A		
	5	1
257A		
	1	1
	8	1
287C		
	356	1

Species	hwy mp	#
SKUNK		
385B		
	146.1	1
385C		
	127.8	1
	155.4	1
	155.8	1
	157.8	1
	158	1
	158.8	1
	162.9	1
	208.3	1
	208.5	2
	209.1	1
SNAKE		
034A		
	107	3
	98.5-107	7
034D		
	4.7	1
040H		
	463.8	2
	464.5	1
	472.4	1
059B		
	136.6	1
257A		
	5	2
	18.5	3
385B		
	147	1
385C		
	162.5	1
	164.2	1
	211.2	1
385D		
	287.8	1
SQUIRREL		
034A		
	102	1
036D		
	186.6	1

Region 4 road kill update, 2015
1/20/2016

Species	hwy mp	#
TOAD		
006I	345.92	2
TURKEY		
006J	430.8	1
034B	256.1	1
036D	213.5	1
	220.5	1
059B	77.9	2
	78	1
	78.2	1
	97.2	1
385C	208	2
TURTLE		
040H	465.5	1
UNK		
006J	371.69	1
	380.6	1
007A	28.7	2
014C	145.044	1
	147.1	1
025A	253.7	1
	263	2
	264	1
	270.5	1
	276	1
034A	64.4	1
	76.5	1
	88	2
	97.79	2

Species	hwy mp	#
UNK		
034A	100.2	1
	107	1
	112	3
	117	1
	142	3
	97.8-107	79
	97-107	4
	98-107	5
034B	181.0	1
	207	1
	209.81	1
034D	0	1
	4.5	2
	0-4.5	11
	0-4.6	4
036B	39	1
	21-34	49
036D	135.5	1
	160.2	1
	178.0	1
040H	459.7	1
	440.7-45	3
052A	70.3	1
	0-4.6	34
059A	60.333	1
059B	74.474	1
	130.6	1
060B	15	1
	16	2

Species	hwy mp	#
UNK		
063A	11.3	2
	30	1
066B	29.5	1
	50	1
	30-33.1	7
071D	138	1
	174	1
076A	25.145	1
	48	1
	85	1
	108	1
	177.2	1
	48-67	4
085C	253.755	1
	236-250	6
	2365-250.5	6
085L	272	1
	273	1
093A	14.8	1
119B	47.3	1
	48.8	1
	50.1	2
	50.8	1
	51.3	1
	54.4	2
257A	18.5	1
	0-17.5	7
	0-18.4	6
	0-18.5	11
	18.0-13	6

Region 4 road kill update, 2015
 1/20/2016

Species	hwy	mp	#
UNK			
287C			
	339		1
385B			
	135.414		5
385C			
	150.251		4
	210.2		1
	207-216		3
392A			
	98		1
392B			
	105.439		2
	115.4		2
	105.4-115.4		28

PATROLS REPORTING
4101
4103
4104
4105
4107
4108
4109
4110
4111
4112
4113
4114
4115
4116
4117
4118
4120
4121
4122
4123
4124
4125
4126
4127
4128
4130
4131
4133
4134
4135
4136
4137
4138
4139
4140
4142
4143
4144
4145
4146
4152
4153
4182

Region 5 road kill update, 2015

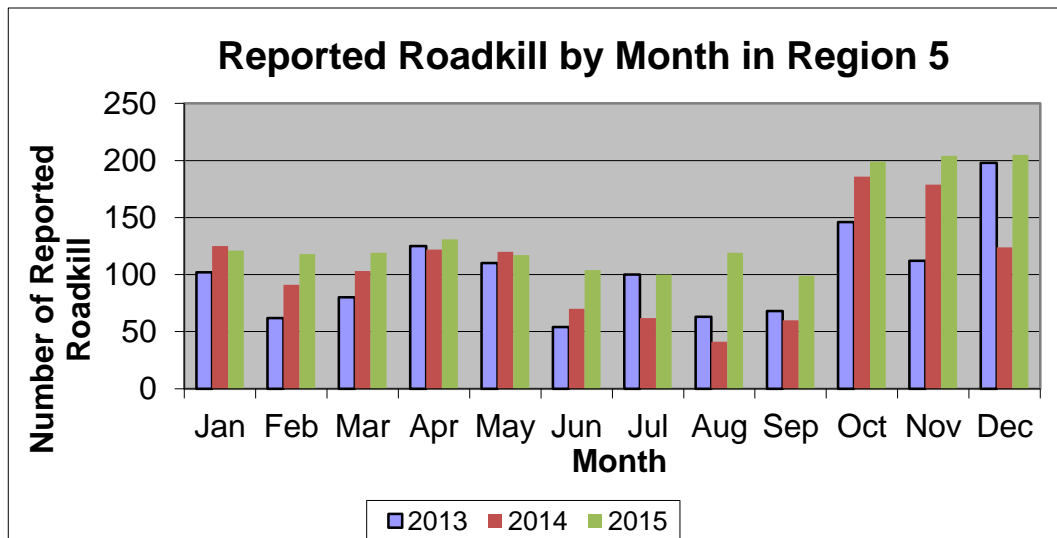
1/21/2016

Totals from CDOT personnel

Total number of reported animals killed 1636

Note: Regional boundaries were reconfigured in 2013

BY MONTH	2013	2014	2015
Jan	102	125	121
Feb	62	91	118
Mar	80	103	119
Apr	125	122	131
May	110	120	117
Jun	54	70	104
Jul	100	62	100
Aug	63	41	119
Sep	68	60	99
Oct	146	186	199
Nov	112	179	204
Dec	198	124	205
Total	1220	1283	1636



Region 5 road kill update, 2015

1/21/2016

2015 BY SPECIES			
BEAR	7	HORSE	3
BOBCAT	2	PORCUPINE	2
CAT	5	RABBIT	1
COYOTE	3	RACCOON	2
DEER	1385	SHEEP	1
DOG	2	SKUNK	14
ELK	78	SNAKE	1
FOX	4	UNK	126

SPECIES BY MONTH	
JAN	
BOBCAT	1
DEER	101
ELK	7
UNK	12
FEB	
DEER	109
SKUNK	1
UNK	8
MARCH	
DEER	105
DOG	1
ELK	6
SKUNK	2
UNK	5
APRIL	
CAT	1
DEER	114
ELK	8
FOX	1
SKUNK	2
UNK	5
MAY	
CAT	1
DEER	98
ELK	7
SKUNK	2
UNK	9
JUNE	
CAT	1
DEER	81
ELK	14
UNK	8

SPECIES BY MONTH	
JULY	
COYOTE	2
DEER	71
ELK	7
UNK	20
AUG	
BEAR	2
DEER	85
ELK	2
FOX	1
HORSE	2
RABBIT	1
RACCOON	2
SKUNK	1
SNAKE	1
UNK	22
SEPT	
BEAR	4
DEER	79
ELK	2
PORCUPINE	1
SKUNK	1
UNK	12
OCT	
DEER	167
ELK	9
SHEEP	1
SKUNK	5
UNK	17

SPECIES BY MONTH	
NOV	
BEAR	1
BOBCAT	1
COYOTE	1
DEER	187
DOG	1
ELK	4
HORSE	1
PORCUPINE	1
UNK	7
DEC	
CAT	2
DEER	188
ELK	12
FOX	2
UNK	1

Region 5 road kill update, 2015

1/21/2016

hwy mp	#
003A	
0-10	14
015B	
20-30	3
017A	
10-20	2
20-30	10
30-40	3
017B	
100-110	2
70-80	4
80-90	3
90-100	3
024A	
190-200	6
200-210	67
210-220	30
220-230	8
050A	
160-170	4
180-190	5
190-200	1
200-210	3
210-220	36
220-230	5
230-240	1
240-250	2
062A	
0-10	1
10-20	2
20-30	2
084A	
0-10	4
10-20	4
20-30	21
097A	
0-10	1
112A	
0-10	6

hwy mp	#
114A	
30-40	1
40-50	4
50-60	3
140A	
0-10	7
10-20	9
20-30	7
141A	
0-10	5
10-20	1
20-30	1
50-60	1
142A	
10-20	1
145A	
0-10	34
10-20	10
20-30	5
30-40	3
40-50	3
50-60	4
60-70	8
70-80	8
80-90	5
90-100	1
149A	
0-10	10
10-20	2
20-30	1
30-40	2
150A	
0-10	1
151A	
0-10	14
10-20	3
20-30	21
30-40	4

hwy mp	#
159A	
0-10	4
10-20	5
20-30	6
30-40	4
160A	
100-110	72
10-20	1
110-120	23
120-130	53
130-140	44
140-150	14
150-160	1
180-190	21
190-200	75
200-210	16
20-30	2
220-230	4
230-240	11
250-260	4
260-270	18
270-280	9
280-290	3
30-40	5
40-50	61
50-60	60
60-70	16
70-80	15
80-90	57
90-100	67
172A	
0-10	9
10-20	26
20-30	21
184A	
0-10	17
184B	
0-10	3
10-20	37
20-30	20

Region 5 road kill update, 2015
1/21/2016

hwy mp	#
285A	
10-20	2
30-40	4
285B	
120-130	4
50-60	4
60-70	1
80-90	1
285C	
120-130	6
130-140	27
140-150	18
291A	
0-10	15
371A	
0-10	3
491B	
20-30	6
30-40	15
40-50	32
50-60	36
60-70	36
550A	
0-10	47
10-20	45
550B	
100-110	23
110-120	16
20-30	22
30-40	20
40-50	8
60-70	3
90-100	6

Species hwy mp	#
BEAR	
050A	
214.7	1
141A	
21.3	1
160A	
135.9	1
491B	
56	1
550B	
31.8	1
40	2
BOBCAT	
160A	
78	1
115.2	1
CAT	
084A	
27.9	1
145A	
3.8	1
159A	
9.5	1
550A	
13	2
COYOTE	
145A	
13.5	1
160A	
269.3	1
184B	
21.8	1
DEER	
003A	
1	3
1.4	2
1.5	3
1.7	2
2	3

Species hwy mp	#
DEER	
015B	
24	1
26.2	1
26.8	1
017A	
17	1
18.5	1
26	2
28.5	1
30.1	1
34.2	2
29-31	7
017B	
70	1
70.2	1
80.6	1
024A	
196.9	1
197.5	1
198	1
199.5	1
199.8	1
200.9	1
201	1
201.5	1
202	1
202.1	1
202.3	1
202.4	1
202.5	2
202.7	4
203	1
204	1
204.3	3
204.7	4
204.8	1
205.2	1
205.8	2
206	2

Region 5 road kill update, 2015
1/21/2016

Species	hwy	#
	mp	
DEER		
024A		
206.7	1	
206.8	2	
206.9	1	
207	4	
207.1	1	
207.2	2	
207.3	2	
207.5	3	
207.6	1	
207.9	2	
208	1	
208.2	1	
208.3	1	
208.5	1	
208.8	1	
209	3	
209.1	5	
209.3	2	
209.5	1	
209.6	1	
209.8	1	
210	2	
211.9	1	
213	1	
213.5	1	
213.8	1	
214	2	
214.1	1	
214.4	2	
214.5	1	
214.9	1	
215.5	1	
216	2	
216.1	1	
216.3	1	
216.5	3	
216.7	1	
217	1	
217.7	1	
218	3	

Species	hwy	#
	mp	
DEER		
024A		
218.2	1	
218.5	1	
219	1	
220	1	
220.5	1	
220.9	1	
224	1	
225.5	1	
225.8	1	
050A		
166.6	2	
167	1	
184.3	1	
186.4	1	
189	1	
193	1	
202	1	
208	1	
209.9	1	
210	3	
210.5	1	
211	1	
211.2	1	
211.3	2	
211.5	1	
211.6	1	
211.7	1	
211.9	1	
212	2	
212.1	2	
212.2	1	
212.3	3	
212.4	1	
212.5	3	
212.8	1	
213.6	2	
214.4	1	
217.11	1	
219	1	
220	1	

Species	hwy	#
	mp	
DEER		
050A		
220.5	2	
227.2	1	
229.5	1	
235	1	
240	2	
062A		
0.7	1	
13	1	
15.2	1	
21	1	
084A		
0.001	2	
5.3	1	
9.2	1	
17.7	1	
19.4	1	
19.8	1	
20	1	
20.3	2	
21.6	2	
23	1	
23.5	1	
24.2	1	
24.3	1	
25	1	
25.5	1	
25.6	1	
26.3	1	
26.4	1	
097A		
1.6	1	
112A		
0.4	1	
0.5	1	
1.2	1	
1.3	1	
2.5	1	

Region 5 road kill update, 2015
1/21/2016

Species	hwy mp	#
DEER		
114A		
45.1		1
45.5		1
46.5		1
47		1
52.3		1
52.5		1
52.8		1
140A		
0.1		1
1		1
5.1		2
6.5		1
6.9		1
12		1
13		1
15		1
15.6		1
16.7		1
18		1
20		1
22.5		1
22.8		1
23.2		2
23.4		1
0.1-23.4		3
141A		
5.3		1
7		1
8		1
9		1
9.9		1
11		1
145A		
0.4		1
1.5		1
1.8		1
3.5		1
3.6		1
3.7		2
3.8		1
4		1

Species	hwy mp	#
DEER		
145A		
4.5		1
4.6		1
6		2
6.1		1
6.7		1
7		1
7.2		1
7.6		1
8.3		1
8.5		2
10		2
13.5		2
17		1
18		1
21.2		2
24.3		1
25.8		1
33.1		1
37.2		1
43.75		1
44.4		1
44.5		1
54.5		1
65.2		1
66.8		1
71		2
73		1
81		1
85		1
89.5		2
99.2		1
149A		
1		1
1.2		1
1.5		1
3		1
3.6		1
4.1		1
5		1
6		1
6.3		1
21		1
30		1

Species	hwy mp	#
DEER		
150A		
8		1
151A		
0		1
0.001		2
0.8		3
1		3
1.9		2
5.2		3
15		2
25		1
33.9		1
34		1
0-34		14
159A		
30.1		1
31.5		1
32.6		1
160A		
16.9		1
22.1		2
31		1
33.3		1
36		1
38		1
40		1
40.2		1
40.3		1
40.4		1
40.5		2
40.8		1
40.9		1
41.2		2
41.9		2
42.1		1
42.2		3
42.5		2
42.6		1
42.7		1
43.1		2
43.2		2

Region 5 road kill update, 2015
1/21/2016

Species	hwy	#
	mp	
DEER		
160A		
43.8		1
43.9		1
44.1		1
44.9		1
45		1
45.7		1
46.1		1
46.2		1
46.5		2
46.9		1
47		1
47.2		1
47.5		1
47.6		1
47.9		4
48.3		1
48.4		2
48.5		2
48.6		2
48.7		1
48.9		2
49		2
49.2		1
49.3		1
49.5		1
49.6		1
49.7		1
49.9		1
50		1
50.5		1
50.7		1
50.8		2
50.9		1
51		1
51.2		2
51.5		1
51.7		1
51.8		1
51.9		1
52.2		1
52.3		2

Species	hwy	#
	mp	
DEER		
160A		
52.4		1
52.6		1
53.1		1
53.2		2
53.3		3
53.5		1
53.7		2
53.8		1
53.9		2
54		1
54.3		1
54.4		1
54.6		3
54.9		1
55		2
55.1		1
55.2		3
55.3		1
55.4		1
55.5		1
55.6		1
56.5		2
56.8		2
57		1
57.1		1
57.5		1
57.8		1
59.2		1
60.1		1
61		1
61.5		1
61.7		1
61.9		2
63		2
64.3		1
66.5		1
67		2
69.8		1
70		1
70.5		2
76		4

Species	hwy	#
	mp	
DEER		
160A		
77		2
79		1
81		3
83		1
83.7		1
84		3
84.4		1
84.5		2
85		5
85.2		1
85.5		1
85.6		1
86		2
87		5
87.5		1
88		4
89		4
89.5		1
90		8
91		5
91.4		1
91.41		2
91.46		2
92		1
92.8		1
92.9		2
93		2
93.1		1
93.2		1
94		3
94.2		1
94.3		1
94.5		2
94.9		1
95		1
95.05		1
95.1		1
95.2		1
95.3		1
95.35		1
95.5		1

Region 5 road kill update, 2015
1/21/2016

Species	hwy mp	#
DEER		
160A		
95.7		1
95.8		1
95.9		2
96.2		1
96.9		1
97.1		1
97.2		1
97.8		1
98		1
98.5		2
99.5		1
99.8		2
100		5
100.1		2
100.5		2
100.9		2
101.1		2
101.2		1
101.4		1
101.8		1
102		2
102.1		1
102.2		1
102.4		2
102.5		1
103		2
103.1		1
103.3		1
103.5		1
103.8		2
103.9		2
104.2		2
105.5		1
105.8		2
106		2
106.5		1
107.4		1
107.5		2
107.8		1
108.1		2
108.2		1

Species	hwy mp	#
DEER		
160A		
108.7		1
108.8		1
109		3
109.2		1
110.3		1
111		1
114		2
117.1		1
117.8		1
118.4		2
119.5		2
119.6		1
119.7		1
119.9		1
121.4		2
121.5		3
121.7		7
121.8		1
121.9		1
122.1		2
122.6		1
123.1		1
123.2		1
123.3		1
123.7		1
124.1		1
124.3		1
124.8		1
125.3		1
125.4		7
126		3
126.8		1
127.2		2
127.3		1
127.5		1
127.7		2
127.8		1
128.1		2
128.3		1
129		1
130		1

Species	hwy mp	#
DEER		
160A		
131.2		1
131.5		1
131.6		1
131.8		1
132.2		2
132.3		1
132.4		1
132.6		2
132.8		1
133.3		2
133.4		1
133.6		1
133.8		1
134.9		5
135		1
137.9		1
139		1
141		1
141.5		1
143		1
144		1
144.4		5
144.5		2
144.8		1
184.8		2
187.6		1
188.2		1
188.3		1
188.6		1
189		2
189.1		2
189.3		2
189.4		2
189.5		2
189.6		3
189.8		1
189.9		1
190		1
190.1		4
190.2		1
190.5		2

Region 5 road kill update, 2015
1/21/2016

Species	hwy mp	#
DEER		
160A		
190.8	2	
191	3	
191.1	2	
191.5	4	
191.6	1	
191.8	1	
191.9	1	
192	1	
192.1	1	
192.3	2	
192.5	1	
192.7	3	
192.9	2	
193	1	
193.4	2	
194	6	
194.2	1	
194.3	1	
194.9	2	
195	3	
195.1	1	
195.2	4	
195.3	2	
195.4	4	
195.5	3	
195.6	4	
196	1	
196.9	1	
198.9	2	
199.3	2	
201	1	
201.6	1	
203	4	
203.1	1	
204	3	
205.6	1	
205.8	1	
206	1	
207	2	
223	1	
229	3	

Species	hwy mp	#
DEER		
160A		
232.1	1	
234	1	
234.5	1	
234.7	1	
234.8	1	
235	1	
235.2	1	
236.3	1	
237	1	
257.3	1	
257.5	1	
259.2	2	
260.5	2	
262	1	
262.7	1	
263	1	
265.2	2	
266.1	1	
267.5	1	
268	1	
268.1	1	
270	1	
270.5	1	
272	1	
276.5	1	
277.5	1	
278	2	
279.9	1	
280	1	
281	1	
282	1	
125.4-14	7	
63-81	3	
85-91	8	
91.4-121	12	
91-121	15	
172A		
0	4	
0.001	2	
9.65	1	
12	3	

Species	hwy mp	#
DEER		
172A		
14	1	
14.1	1	
15	1	
16	1	
16.3	1	
17.8	1	
18	2	
18.3	1	
20	2	
20.5	2	
22	1	
22.9	1	
23	1	
24.3	1	
24.4	6	
0-24	7	
0-24.4	6	
184A		
3.4	1	
3.5	1	
3.8	1	
4.2	1	
4.3	2	
4.4	1	
5	1	
5.7	1	
5.9	1	
6	2	
6.1	1	
7.2	1	
7.6	1	
8	1	
184B		
9	1	
10.5	2	
10.6	1	
11.5	2	
11.6	1	
12	4	
13	1	
13.1	1	

Region 5 road kill update, 2015
1/21/2016

Species	hwy mp	#
DEER		
184B		
	13.5	1
	14.8	1
	15	2
	15.2	1
	15.3	1
	15.6	1
	16	1
	16.1	1
	16.2	1
	16.9	1
	17	1
	17.1	1
	17.3	4
	19.1	1
	20.3	1
	21	1
	21.5	1
	21.7	1
	21.9	1
	23	1
	23.2	1
	23.8	1
	25.8	1
	25.9	1
	26	1
	26.2	1
285A		
	17.4	1
	17.8	1
	33	2
	33.5	1
285B		
	54.5	1
	120	2
	125.2	1
	125.7	1
285C		
	128.6	1
	128.8	4
	128.9	1
	130	1
	130.2	1

Species	hwy mp	#
DEER		
285C		
	130.3	1
	130.5	2
	130.8	1
	131	1
	131.1	1
	132.2	2
	132.5	1
	133.2	1
	133.5	1
	134.1	1
	134.8	1
	135.2	1
	136.2	1
	136.3	1
	136.5	1
	136.6	1
	136.8	1
	138.1	1
	138.3	1
	138.5	1
	142.4	2
	142.5	1
	145	4
	145.2	1
	145.5	2
	145.7	2
	146.1	1
	146.2	1
	146.4	1
291A		
	2.3	1
	2.4	1
	3.1	1
	3.2	1
	3.5	1
	4.2	1
	4.4	1
	4.9	1
	5	1
	5.6	1
	6.2	1
	6.4	2

Species	hwy mp	#
DEER		
291A		
	7.3	1
	7.4	1
371A		
	0.8	1
	0.9	1
	1	1
491B		
	22.4	1
	26.5	1
	27.4	2
	29	2
	30.9	1
	31.7	1
	32.4	1
	33	1
	34.1	1
	34.8	1
	35	1
	35.2	2
	36.8	1
	37	1
	37.4	1
	40	2
	43.1	1
	44	1
	44.1	1
	45.1	1
	45.4	1
	45.8	1
	46.1	1
	46.4	2
	46.5	1
	47	2
	47.2	1
	47.5	1
	47.6	2
	48	2
	48.1	2
	48.2	1
	48.8	1
	49	3
	49.1	2

Region 5 road kill update, 2015
1/21/2016

Species	hwy mp	#
DEER		
491B		
49.4		1
50		1
51		1
51.8		1
51.9		1
52.4		1
52.9		1
53		1
53.2		1
55		1
55.1		1
57		2
57.5		1
57.9		2
58		3
58.4		1
58.5		1
58.9		1
59		1
59.6		1
59.8		2
60		1
60.6		1
60.9		2
61.9		1
62		1
62.6		1
63		2
63.3		1
63.4		2
63.5		1
63.6		1
66		2
67		3
67.1		1
67.2		1
67.3		2
67.5		2
67.8		3
68		1

Species	hwy mp	#
DEER		
491B		
68.3		1
68.5		2
68.99		1
69.6		1
27-43		3
41-64		3
47-57		3
550A		
0.5		4
1		2
2		1
3		1
4		2
4.2		1
5		2
5.5		1
6.5		1
7		8
7.5		1
8		11
8.7		1
9		3
10		5
10.1		1
10.2		1
10.4		4
11		4
11.2		2
11.7		1
12		2
13		3
14		3
14.5		1
15		2
15.7		1
16		3
42197		4
4.0-14		4

Species	hwy mp	#
DEER		
550B		
24.7		1
25		5
26.1		2
26.3		1
26.5		1
27		1
28		1
28.5		1
29		2
30		4
31.4		1
33		1
33.4		1
33.5		1
34		1
34.5		2
37		1
38.2		1
39		1
39.7		1
42.4		1
47.7		1
49.3		1
64		1
93		1
97.5		1
98		1
98.1		1
103.8		2
105		3
105.1		1
106		1
108		2
108.8		1
109		1
109.2		2
110		1
112		1
112.1		2
112.5		1

Region 5 road kill update, 2015
1/21/2016

Species	hwy mp	#
DEER		
550B		
	113.1	1
	114	7
	114.1	1
	115	1
	115.3	1
	26-48	3
	95-117	8
DOG		
160A		
	234.8	1
	235	1
ELK		
017B		
	85.1	1
	97.6	1
	99.1	2
	102.7	2
024A		
	197.8	1
	223	1
050A		
	168.5	1
	183.6	1
	187.6	1
	211.5	1
	212.1	1
	212.3	1
	212.4	1
	212.5	1
084A		
	24	1
114A		
	39.5	1
140A		
	20	1

Species	hwy mp	#
ELK		
145A		
	53.5	1
	54.5	1
	75.8	1
	80	1
	62.7-72.	3
149A		
	9.3	1
	16.5	1
151A		
	26	1
159A		
	4	1
	10	1
	17	1
	27.3	2
	27.5	2
	28	1
	31.1	1
160A		
	59.2	1
	63	3
	81	2
	81.2	1
	112	1
	113	1
	119	1
	119.1	1
	126.7	1
	128.8	1
	136.6	1
	193.5	1
	205.5	1
	261	2
	262.5	1
	265.3	1
	265.5	1
	270	1

Species	hwy mp	#
ELK		
172A		
	0.01	1
	24.4	1
184B		
	18.8	1
285A		
	31.4	1
285C		
	133.7	1
	134.4	1
	134.6	1
	146.3	1
491B		
	50.5	1
550A		
	8	1
	10	1
550B		
	26.4	1
	26.5	1
	27	1
	39.1	1
	43.3	1
	44.9	1
	46	1
FOX		
145A		
	0.1	1
160A		
	100.8	1
	101.2	1
491B		
	59.8	1
HORSE		
017B		
	75.4	1
159A		
	9.5	2

Region 5 road kill update, 2015
1/21/2016

Species	hwy mp	#
PORCUPINE		
160A		
81.1		1
260		1
RABBIT		
145A		
7.2		1
RACCOON		
145A		
3.8		1
184B		
12.7		1
SHEEP		
145A		
77.5		1
SKUNK		
084A		
25.8		1
27.9		1
145A		
4.1		1
7.1		1
16		1
160A		
121.7		4
142		1
144.8		1
184A		
1		1
184B		
11.4		1
23.2		1
SNAKE		
145A		
4.6		1

Species	hwy mp	#
UNK		
003A		
0.5		1
017B		
75.4		1
88.195		1
084A		
17		1
25.5		3
112A		
4		1
140A		
1.2		1
141A		
57		1
142A		
13		1
145A		
3.1		1
3.2		1
4.1		1
4.2		1
6.9		1
8		1
16		2
26.75		1
34.5		1
59.45		1
63		3
72		1
74		1
74.2		1
149A		
18		1
39		1
151A		
15		1
33.9		2
0-24.4		5

Species	hwy mp	#
UNK		
159A		
11		1
14.5		1
18.9		1
21.1		1
160A		
36		1
55.25		1
56.2		1
57.9		1
70		1
81		1
83		2
83.6		2
84		2
86		1
87		1
91		1
131.5		1
132.2		3
138.8		3
152		1
196		2
121.7-144.9		3
91.4-121.5		5
172A		
1		1
12		1
24		1
24.4		2
11-24.4		3
184B		
9		2
12.6		1
15		1
16		1
17.2		1
20		1
22		1
26		1
17.5-23.1		3

Region 5 road kill update, 2015

1/21/2016

Species	hwy	mp	#
UNK			
285B			
	69		1
	84		1
	51.2-62.9		3
285C			
	141		1
	142.5		1
491B			
	45		1
	46.9		1
	56		2
	64		2
550A			
	2		1
	3.5		1
	4.5		2
	8		2
	9		1
	10		1
550B			
	24.5		3
	25.4		1
	65		1
	67		1
	95		1
	98.5		1
	105.1		1
	107		1

PATROLS REPORTING
5301
5302
5303
5304
5305
5307
5310
5311
5312
5313
5314
5315
5317
5319
5320
5321
5324
5327
5396
5701
5702
5703
5704
5705
5707
5708
5709
5710
5711
5717
5718
5719
5723
5724
5725
5727
5728
57j2

