

Region 1 road kill update, EOY 2018

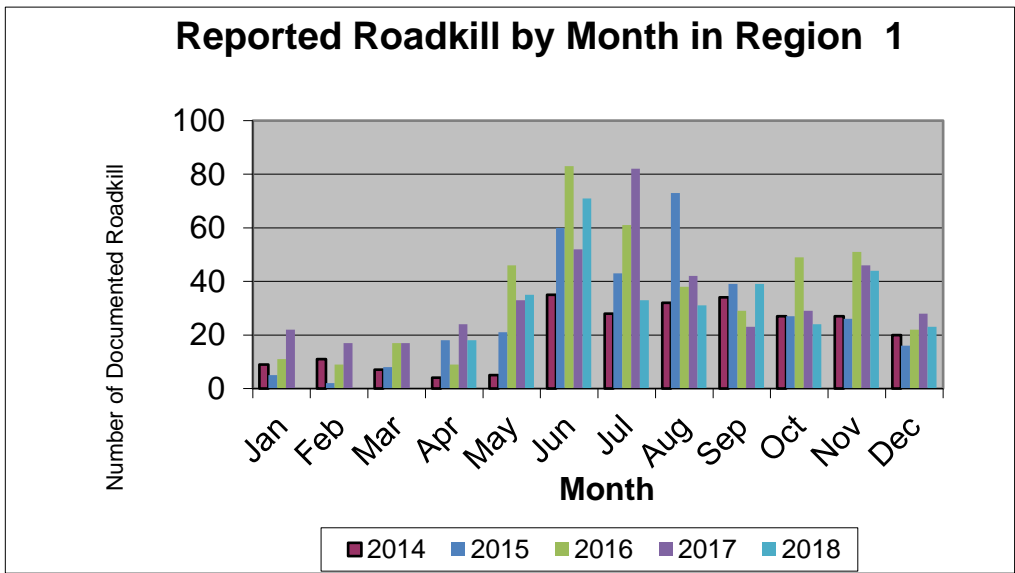
1/23/2019

Totals from CDOT personnel

Total number of reported animals killed: 318

Note: Due to a possible compromise in the data, all calculations January - March have been excluded from this report

BY MONTH	2014	2015	2016	2017	2018
Jan	9	5	11	22	-
Feb	11	2	9	17	-
Mar	7	8	17	17	-
Apr	4	18	9	24	18
May	5	21	46	33	35
Jun	35	60	83	52	71
Jul	28	43	61	82	33
Aug	32	73	38	42	31
Sep	34	39	29	23	39
Oct	27	27	49	29	24
Nov	27	26	51	46	44
Dec	20	16	22	28	23
Unknown Mo	0	0	0	1	0
Total	239	338	425	416	318



Region 1 road kill update, EOY 2018

1/23/2019

2018 BY SPECIES						
BEAR	4		DOG	1	PHEASANT	1
BIGHORN	1		ELK	31	RABBIT	1
CAT	2		FOX	2	RACCOON	4
COYOTE	3		LION	4	SKUNK	2
DEER	220		MOOSE	3	UNK	39

SPECIES BY MONTH							
April			July			November	
DEER	16		BEAR	1		BIGHORN	1
UNK	2		COYOTE	2		DEER	26
May			DEER	22		ELK	5
BEAR	1		ELK	3		LION	2
CAT	1		FOX	1		SKUNK	1
DEER	23		MOOSE	1		UNK	9
DOG	1		RACCOON	2		December	
ELK	4		UNK	1		DEER	15
UNK	5		August			ELK	4
June			BEAR	1		UNK	4
BEAR	1		DEER	23			
CAT	1		ELK	5			
DEER	49		FOX	1			
ELK	6		UNK	1			
LION	1		September				
MOOSE	2		DEER	29			
PHEASANT	1		ELK	2			
RABBIT	1		LION	1			
RACCOON	2		UNK	7			
SKUNK	1		October				
UNK	6		COYOTE	1			
			DEER	17			
			ELK	2			
			UNK	4			

Region 1 road kill update, EOY 2018
1/23/2019

Hwy MP range	#
006G	
260-270	1
270-280	3
280-290	1
007D	
70-80	2
022A	
0-10	2
025A	
160-170	1
170-180	18
180-190	16
190-200	3
200-210	1
210-220	1
036D	
180-190	2
200-210	1
220-230	1
040A	
240-250	2
250-260	5
270-280	1
070A	
210-220	8
220-230	14
230-240	12
240-250	10
250-260	19
260-270	4
280-290	3
072A	
10-20	1
20-30	1
074A	
0-10	19
076A	
0-10	2
20-30	1

Hwy MP range	#
083A	
30-40	11
40-50	5
50-60	21
60-70	8
085B	
180-190	2
190-200	6
086A	
0-10	7
10-20	12
088A	
0-10	2
093A	
0-10	9
10-20	1
103A	
20-30	1
119A	
0-10	3
20-30	2
121B	
0-10	1
225A	
0-10	1
285A	
230-240	1
285D	
0-10	2
220-230	3
230-240	28
240-250	28
250-260	2
391A	
0-10	1
470A	
0-10	5
10-20	1

Species hwy mp	#
BEAR	
025A 170-180	3
070A 220-230	1
BIGHORN	
070A 230-240	1
CAT	
036D 200-210	1
285D 0-10	1
COYOTE	
040A 270-280	1
085B 190-200	1
285D 230-240	1
DEER	
006G 260-270	1
270-280	3
280-290	1
007D 70-80	2
022A 0-10	2
025A	
160-170	1
170-180	7
180-190	6
190-200	3
178-183	5
040A	
240-250	2
250-260	5

Region 1 road kill update, EOY 2018
1/23/2019

Species	hwy mp	#
DEER		
070A		
	210-220	5
	220-230	8
	230-240	7
	240-250	6
	250-260	10
	280-290	1
	241-269	10
072A		
	10-20	1
	20-30	1
074A		
	0-10	9
076A		
	20-30	1
083A		
	30-40	5
	40-50	2
	50-60	21
	60-70	6
085B		
	190-200	5
086A		
	0-10	7
	10-20	11
093A		
	0-10	6
103A		
	20-30	1
119A		
	0-10	3
	20-30	2
121B		
	0-10	1
225A		
	0-10	1
285A		
	230-240	1

Species	hwy mp	#
DEER		
285D		
	220-230	3
	230-240	25
	240-250	21
391A		
	0-10	1
470A		
	0-10	1
DOG		
025A		
	200-210	1
ELK		
025A		
	170-180	2
	180-190	7
070A		
	210-220	1
	250-260	3
074A		
	0-10	4
083A		
	30-40	5
	40-50	2
085B		
	180-190	2
093A		
	0-10	1
285D		
	230-240	1
	240-250	3
FOX		
070A		
	210-220	1
083A		
	40-50	1
LION		
025A		
	170-180	4

Species	hwy mp	#
MOOSE		
070A		
	220-230	1
	230-240	2
PHEASANT		
036D		
	180-190	1
RABBIT		
036D		
	220-230	1
RACCOON		
083A		
	60-70	2
088A		
	0-10	1
285D		
	250-260	1
SKUNK		
036D		
	180-190	1
088A		
	0-10	1
UNK		
025A		
	210-220	1
070A		
	210-220	1
	220-230	4
	230-240	2
	240-250	1
	250-260	2
	260-270	1
	280-290	2
074A		
	0-10	6
076A		
	0-10	2

Region 1 road kill update, EOY 2018
 1/23/2019

Species		
hwy		#
mp		
UNK		
083A		
30-40		1
086A		
10-20		1
093A		
0-10		2
10-20		1
285D		
230-240		2
240-250		4
250-260		1
470A		
0-10		4
10-20		1

Patrols reporting
1501
1502
1503
1506
1509
1510
1511
1515
1516
1517
1518
1520
1521
1522
1524
1525
1526
1528
1530
1927
1930
1934
1935
1936
1937
1940
1941
1945

Region 2 road kill update, EOY 2018

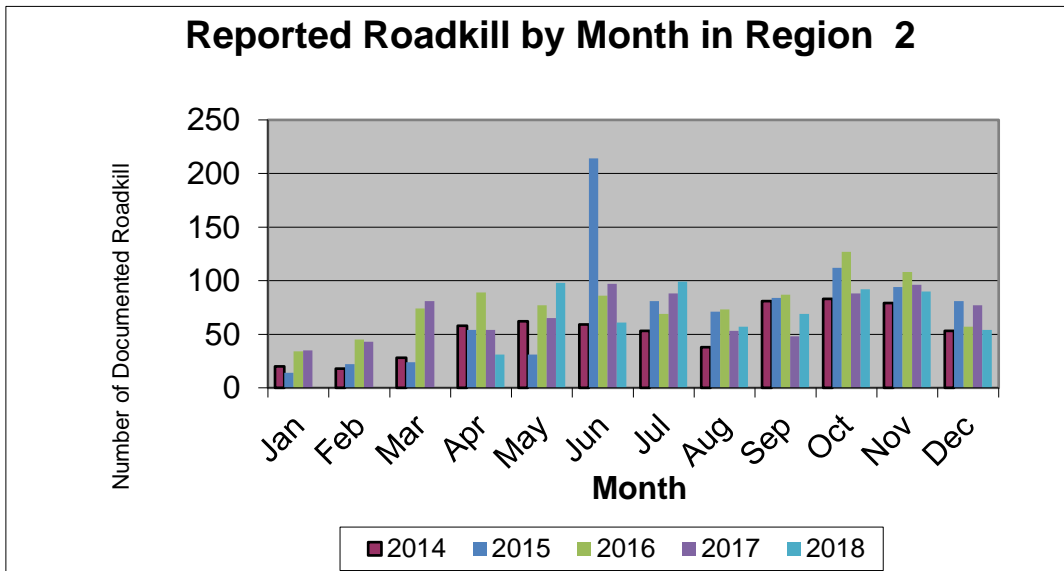
1/23/2019

Totals from CDOT personnel

Total number of reported animals killed: 651

Note: Due to a possible compromise in the data, all calculations January - March have been excluded from this report

BY MONTH	2014	2015	2016	2017	2018
Jan	20	14	34	35	-
Feb	18	22	45	43	-
Mar	28	24	74	81	-
Apr	58	54	89	54	31
May	62	31	77	65	98
Jun	59	214	86	97	61
Jul	53	81	69	88	99
Aug	38	71	73	53	57
Sep	81	84	87	48	69
Oct	83	112	127	88	92
Nov	79	94	108	96	90
Dec	53	81	57	77	54
Total	632	882	926	825	651



Region 2 road kill update, EOY 2018

1/23/2019

2018 BY SPECIES	
BADGER	2
BEAR	1
BOBCAT	1
CAT	3
CHICKEN	3
COW	1
COYOTE	7
DEER	402
DOG	5
ELK	58
FOX	3
HAWK	1
HORSE	1
MOOSE	2
OWL	1
PIG	3
PORCUPINE	1
PRONGHORN	9
RACCOON	22
SKUNK	6
TURKEY	2
UNK	117

SPECIES BY MONTH	
April	
DEER	21
ELK	3
MOOSE	1
UNK	6
May	
DEER	48
DOG	1
ELK	9
PRONGHORN	2
UNK	38
June	
BEAR	1
DEER	35
DOG	1
ELK	2
PIG	3
PRONGHORN	5
RACCOON	4
UNK	10

SPECIES BY MONTH	
July	
COYOTE	3
DEER	62
ELK	2
HORSE	1
PRONGHORN	1
SKUNK	4
UNK	26
August	
BADGER	2
CHICKEN	3
COYOTE	1
DEER	38
ELK	2
PRONGHORN	1
RACCOON	1
TURKEY	2
UNK	7
September	
BOBCAT	1
CAT	1
COYOTE	3
DEER	31
ELK	7
MOOSE	1
OWL	1
RACCOON	13
UNK	11
October	
COW	1
DEER	61
DOG	1
ELK	15
FOX	1
PORCUPINE	1
RACCOON	3
UNK	9

SPECIES BY MONTH	
November	
DEER	65
ELK	12
FOX	2
HAWK	1
SKUNK	2
UNK	8
December	
CAT	2
DEER	41
DOG	2
ELK	6
RACCOON	1
UNK	2

Region 2 road kill update, EOY 2018
1/23/2019

hwy mp	#
009A	
0-10	7
10-20	8
20-30	5
30-40	1
009B	
40-50	1
50-60	4
60-70	1
009C	
60-70	2
70-80	2
010A	
0-10	1
30-40	1
012A	
0-10	3
10-20	2
021B	
150-160	4
024A	
220-230	1
240-250	2
250-260	4
260-270	12
270-280	11
280-290	39
290-300	36
300-310	21
024G	
310-320	6
320-330	5
330-340	1
340-350	8
025A	
10-20	3
20-30	1
30-40	3
50-60	2
60-70	7
70-80	2
80-90	1

hwy mp	#
025A	
90-100	4
100-110	1
110-120	1
120-130	1
130-140	9
140-150	6
150-160	2
045A	
0-10	1
047A	
0-10	1
050A	
240-250	3
250-260	1
260-270	3
270-280	22
280-290	16
290-300	3
050B	
310-320	6
320-330	9
330-340	5
340-350	7
350-360	12
360-370	15
370-380	10
380-390	10
400-410	1
440-450	6
450-460	5
460-470	2
050C	
0-10	2
067A	
0-10	6
10-20	5
067D	
70-80	1
80-90	1

hwy mp	#
067F	
50-60	1
60-70	2
069A	
40-50	2
60-70	11
70-80	5
80-90	2
078A	
10-20	5
20-30	7
30-40	5
083A	
20-30	4
089A	
10-20	2
094A	
0-10	17
10-20	12
20-30	2
30-40	2
096A	
0-10	3
10-20	3
20-30	10
40-50	2
50-60	1
096B	
80-90	1
096D	
180-190	5
115A	
0-10	22
10-20	2
20-30	7
30-40	17
40-50	18
116A	
0-10	1

Region 2 road kill update, EOY 2018
1/23/2019

hwy mp	#
160A	
280-290	6
290-300	1
300-310	8
160C	
340-350	1
370-380	1
165A	
20-30	5
30-40	6
207A	
0-10	3
231A	
0-10	1
285D	
160-170	17
170-180	1
180-190	2
190-200	9
200-210	4
210-220	2
220-230	23
287A	
30-40	1
287B	
110-120	5

Species hwy mp	#
BADGER	
094A 10-20	2
BEAR	
024A 280-290	1
BOBCAT	
050B 350-360	1
CAT	
024G 310-320	1
050B 360-370	2
CHICKEN	
094A 10-20	3
COW	
160A 300-310	1
COYOTE	
009A 20-30	1
024A 240-250	2
050A 280-290	1
115A 30-40	1
160A 300-310	1
285D 220-230	1
DEER	
009A 0-10	7
10-20	7
20-30	4
30-40	1

Species hwy mp	#
DEER	
009B 50-60	1
010A 0-10	1
012A 0-10	3
10-20	2
021B 150-160	3
024A 220-230	1
250-260	3
260-270	8
270-280	10
280-290	38
290-300	36
300-310	20
024G 310-320	4
320-330	5
330-340	1
340-350	8
025A 10-20	2
50-60	2
60-70	1
70-80	2
90-100	3
100-110	1
110-120	1
130-140	9
140-150	6
150-160	2
045A 0-10	1
047A 0-10	1

Region 2 road kill update, EOY 2018

1/23/2019

Species	hwy mp	#
DEER		
050A		
	240-250	2
	250-260	1
	260-270	3
	270-280	12
	280-290	13
	290-300	3
050B		
	330-340	1
	340-350	1
	360-370	2
	400-410	1
	440-450	6
	450-460	5
067A		
	0-10	4
	10-20	2
067D		
	70-80	1
	80-90	1
067F		
	60-70	2
069A		
	40-50	2
	60-70	10
	70-80	5
	80-90	2
078A		
	10-20	1
	20-30	1
083A		
	20-30	4
094A		
	0-10	13
	30-40	2
096A		
	0-10	2
	10-20	2
	20-30	8
	40-50	2
	50-60	1

Species	hwy mp	#
DEER		
096B		
	80-90	1
096D		
	180-190	2
115A		
	0-10	2
	10-20	1
	20-30	7
	30-40	13
	40-50	18
160A		
	280-290	2
	290-300	1
	300-310	6
160C		
	340-350	1
165A		
	20-30	5
	30-40	6
231A		
	0-10	1
285D		
	200-210	3
	210-220	2
	220-230	20
287A		
	30-40	1
287B		
	110-120	1
DOG		
024A		
	260-270	1
050B		
	350-360	1
	360-370	1
094A		
	0-10	1
	10-20	1

Species	hwy mp	#
ELK		
009A		
	10-20	1
009B		
	40-50	1
	50-60	3
	60-70	1
009C		
	60-70	2
010A		
	30-40	1
021B		
	150-160	1
024A		
	260-270	2
	270-280	1
	300-310	1
025A		
	10-20	1
	120-130	1
	60-70	1
	80-90	1
	90-100	1
067F		
	50-60	1
069A		
	60-70	1
096A		
	10-20	1
115A		
	30-40	1
160A		
	280-290	4
285D		
	160-170	17
	170-180	1
	180-190	2
	190-200	8
	200-210	1
	220-230	2

Region 2 road kill update, EOY 2018
1/23/2019

Species	hwy mp	#
FOX		
050B	360-370	1
078A	20-30	2
HAWK		
050A	240-250	1
HORSE		
024A	260-270	1
MOOSE		
009C	70-80	2
OWL		
094A	20-30	1
PIG		
050B	350-360	3
PORCUPINE		
050B	340-350	1
PRONGHORN		
024A	250-260	1
067A	0-10	2
094A	0-10	1
	10-20	2
	20-30	1
096A	0-10	1
285D	190-200	1

Species	hwy mp	#
RACCOON		
050A	280-290	8
050B	360-370	1
	343-367	3
094A	0-10	2
	10-20	4
115A	0-10	4
SKUNK		
050C	0-10	1
078A	30-40	1
115A	0-10	4
TURKEY		
050B	460-470	2
UNK		
024G	310-320	1
025A	20-30	1
	30-40	3
	59.5-72.6	5
050A	270-280	2
	280-290	2
050B	310-320	1
	320-330	2
	330-340	2
	340-350	4
	350-360	2
	360-370	2
	352-388	43

Species	hwy mp	#
UNK		
050C	0-10	1
067A	10-20	3
078A	0-33.2	12
089A	10-20	2
096A	20-30	2
096D	169-207.5	3
115A	0-10	12
	10-20	1
	30-40	2
116A	0-10	1
160C	370-380	1
207A	0-10	3
287B	110-120	4

Region 2 road kill update, EOY 2018
1/23/2019

PATROLS REPORTING	
2402	
2403	
2404	
2405	
2406	
2407	
2408	
2409	
2410	
2414	
2415	
2417	
2418	
2419	
2420	
2421	
2422	
2423	
2424	
2425	
2426	
2427	
2428	
2429	
2430	
2431	
2432	
2433	
2436	
2437	
2438	
2439	
2441	
2452	
2458	
2459	
2460	
2465	
2467	
2468	
2469	
2472	
2476	

Region 3 road kill update, EOY 2018

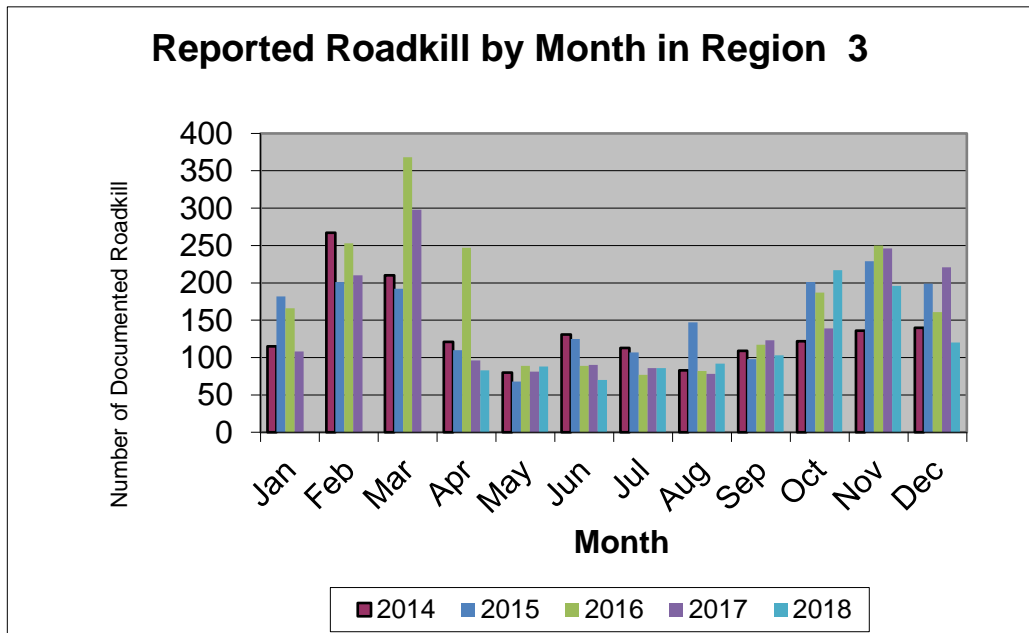
1/23/2019

Totals from CDOT personnel

Total number of reported animals killed: 1055

Note: Due to a possible compromise in the data, all calculations January - March have been excluded from this report

BY MONTH	2014	2015	2016	2017	2018
Jan	115	182	166	108	-
Feb	267	201	253	210	-
Mar	210	192	368	298	-
Apr	121	110	247	96	83
May	80	68	89	81	88
Jun	131	125	89	90	70
Jul	113	107	77	86	86
Aug	83	147	82	78	92
Sep	109	98	117	123	103
Oct	122	201	187	139	217
Nov	136	229	250	246	196
Dec	140	199	161	221	120
Total	1627	1859	2086	1776	1055



Region 3 road kill update, EOY 2018

1/23/2019

2018 BY SPECIES	
BADGER	1
BEAR	5
BEAVER	3
BIGHORN	4
CAT	2
COW	1
COYOTE	7
DEER	685
ELK	91
FOX	14
HORSE	2
MOOSE	6
PORCUPINE	15
PRONGHORN	5
RABBIT	12
RACCOON	58
SKUNK	18
TURKEY	3
UNK	123

SPECIES BY MONTH	
April	
BEAVER	1
DEER	58
ELK	7
FOX	1
MOOSE	2
PORCUPINE	1
RABBIT	1
RACCOON	8
UNK	4
May	
BEAVER	1
CAT	1
DEER	54
ELK	5
MOOSE	4
PORCUPINE	2
PRONGHORN	1
RACCOON	2
UNK	18
June	
DEER	49
ELK	5
FOX	1
PRONGHORN	1
RABBIT	2
UNK	12
July	
BEAVER	1
BIGHORN	2
DEER	32
ELK	8
FOX	2
PORCUPINE	6
PRONGHORN	1
RACCOON	15
SKUNK	1
UNK	18

Region 3 road kill update, EOY 2018

1/23/2019

SPECIES BY MONTH	
August	
BIGHORN	1
CAT	1
COW	1
COYOTE	1
DEER	46
ELK	4
PORCUPINE	1
PRONGHORN	2
RACCOON	6
SKUNK	3
UNK	26
September	
BADGER	1
BEAR	3
DEER	42
ELK	13
FOX	4
HORSE	1
PORCUPINE	2
RABBIT	1
RACCOON	7
SKUNK	2
UNK	27
October	
BEAR	1
BIGHORN	1
COYOTE	1
DEER	175
ELK	9
FOX	1
PORCUPINE	2
RACCOON	11
SKUNK	7
UNK	9

SPECIES BY MONTH	
November	
BEAR	1
COYOTE	2
DEER	153
ELK	7
FOX	3
HORSE	1
PORCUPINE	1
RABBIT	5
RACCOON	9
SKUNK	5
TURKEY	3
UNK	6
December	
COYOTE	3
DEER	76
ELK	33
FOX	2
RABBIT	3
UNK	3

Region 3 road kill update, EOY 2018

1/23/2019

hwy mp	#
006A	
10-20	2
006C	
30-40	1
006D	
90-100	6
100-110	4
006E	
140-150	1
150-160	1
160-170	15
170-180	2
006F	
210-220	4
009C	
80-90	7
90-100	5
009D	
100-110	8
110-120	12
120-130	12
130-140	1
013A	
0-10	4
10-20	4
20-30	2
30-40	6
40-50	3
50-60	8
60-70	1
70-80	6
80-90	15
110-120	1

hwy mp	#
013B	
0-10	1
80-90	6
90-100	18
100-110	24
110-120	19
120-130	7
014A	
0-10	1
10-20	4
014B	
40-50	1
024A	
150-160	1
160-170	2
170-180	7
180-190	6
190-200	2
034A	
0-10	2
040A	
0-10	3
10-20	1
20-30	6
30-40	3
40-50	4
60-70	1
70-80	1
80-90	6
90-100	32
100-110	48
110-120	45
120-130	24
130-140	6
140-150	2
150-160	4
160-170	2
170-180	3
180-190	2

hwy mp	#
040A	
190-200	2
200-210	5
220-230	1
230-240	1
050A	
30-40	5
40-50	2
60-70	1
80-90	5
90-100	8
100-110	7
110-120	11
120-130	21
130-140	3
140-150	6
150-160	7
064A	
10-20	8
40-50	3
50-60	1
70-80	2
065A	
0-10	14
10-20	4
20-30	2
30-40	2
40-50	2
50-60	2

Region 3 road kill update, EOY 2018
1/23/2019

hwy mp	#
070A	
0-10	1
10-20	1
30-40	1
40-50	1
50-60	1
60-70	1
70-80	6
80-90	6
90-100	6
100-110	4
110-120	13
120-130	17
130-140	5
140-150	13
150-160	6
160-170	12
170-180	15
180-190	8
190-200	12
200-210	17
070B	
0-10	6
10-20	2
160-170	1
082A	
0-10	23
10-20	22
20-30	28
30-40	18
60-70	5
091A	
0-10	12
10-20	19
20-30	2

hwy mp	#
092A	
0-10	3
10-20	14
20-30	10
30-40	2
40-50	6
50-60	1
114A	
90-100	1
125A	
20-30	1
131B	
0-10	3
10-20	2
20-30	6
30-40	3
40-50	5
60-70	4
133A	
0-10	22
10-20	6
20-30	1
30-40	2
60-70	1
135A	
0-10	12
10-20	2
20-30	4
139A	
0-10	2
10-20	1
20-30	3
30-40	1
60-70	1
13A	
50-60	1

hwy mp	#
141A	
90-100	1
110-120	4
120-130	1
130-140	1
141B	
150-160	5
160-170	1
318A	
40-50	2
325A	
0-10	3
330A	
0-10	20
10-20	2
340A	
0-10	6
10-20	2
550B	
110-120	8
120-130	45

Region 3 road kill update, EOY 2018

1/23/2019

Species	hwy mp	#
BADGER		
024A	170-180	1
BEAR		
070A	160-170	1
082A	0-10	3
133A	20-30	1
BEAVER		
006E	170-180	1
092A	0-10	1
330A	0-10	1
BIGHORN		
070A	110-120	2
	120-130	2
CAT		
070A	120-130	1
082A	10-20	1
COW		
340A	0-10	1
COYOTE		
040A	40-50	1
050A	110-120	1

Species	hwy mp	#
COYOTE		
070A	80-90	1
	100-110	1
	110-120	1
	140-150	1
	150-160	1
DEER		
006C	30-40	1
006D	90-100	3
006E	140-150	1
	150-160	1
	160-170	13
006F	210-220	3
009C	80-90	3
	90-100	1
009D	100-110	5
	110-120	8
	120-130	10
	130-140	1
013A	0-10	3
	10-20	4
	20-30	1
	30-40	6
	40-50	2
	50-60	2
	60-70	1
	70-80	4
	80-90	12
	53-66	5

Species	hwy mp	#
DEER		
013B	0-10	1
	80-90	1
	90-100	9
	100-110	11
	110-120	10
	120-130	2
	90-128	27
014A	10-20	1
014B	40-50	1
024A	150-160	1
	160-170	1
	170-180	4
	190-200	1
034A	0-10	2
040A	0-10	2
	10-20	1
	20-30	2
	40-50	3
	60-70	1
	70-80	1
	80-90	6
	90-100	19
	100-110	10
	110-120	12
	120-130	2
	130-140	2
	150-160	1
	160-170	2
	180-190	2
	190-200	2
	200-210	5
	220-230	1
	230-240	1

Region 3 road kill update, EOY 2018

1/23/2019

Species	hwy mp	#
DEER		
050A		
	30-40	3
	40-50	1
	60-70	1
	80-90	3
	90-100	7
	100-110	3
	110-120	7
	120-130	4
	130-140	3
	140-150	5
	150-160	7
	118-131.4	10
064A		
	10-20	8
	40-50	3
	70-80	2
065A		
	0-10	14
	10-20	4
	20-30	2
	30-40	2
	40-50	2
	50-60	2
070A		
	10-20	1
	40-50	1
	50-60	1
	60-70	1
	70-80	5
	80-90	5
	90-100	4
	100-110	1
	110-120	9
	120-130	13
	130-140	4
	140-150	10
	150-160	2

Species	hwy mp	#
DEER		
070A		
	160-170	7
	170-180	14
	180-190	7
	190-200	7
	200-210	9
070B		
	0-10	4
	10-20	2
082A		
	0-10	13
	10-20	18
	20-30	19
	30-40	13
	60-70	1
	16-26	8
091A		
	0-10	6
	10-20	9
	20-30	1
092A		
	0-10	2
	10-20	14
	20-30	3
	30-40	2
	40-50	6
131B		
	0-10	2
	10-20	1
	20-30	2
	30-40	2
	40-50	2
133A		
	0-10	14
	10-20	3
	60-70	1
	.1-17	5

Species	hwy mp	#
DEER		
135A		
	0-10	6
	10-20	1
	20-30	3
	1-27.4	7
139A		
	10-20	1
	20-30	3
	60-70	1
141A		
	90-100	1
	110-120	1
	130-140	1
141B		
	150-160	1
	160-170	1
325A		
	0-10	3
330A		
	0-10	14
	10-20	1
	.1-11.4	3
340A		
	0-10	3
	10-20	2
550B		
	110-120	6
	120-130	23
	118-127	19
ELK		
009C		
	90-100	1
009D		
	110-120	1

Region 3 road kill update, EOY 2018
1/23/2019

Species	hwy mp	#
ELK		
013A		
	110-120	1
	20-30	1
	40-50	1
	50-60	1
	70-80	2
	80-90	3
013B		
	90-100	3
	100-110	8
	110-120	3
014A		
	0-10	1
	10-20	3
024A		
	160-170	1
	170-180	1
	180-190	4
040A		
	20-30	3
	30-40	3
	120-130	1
	140-150	1
	150-160	2
	170-180	2
050A		
	100-110	3
	120-130	5
	140-150	1
064A		
	50-60	1
070A		
	30-40	1
	70-80	1
	140-150	1
	180-190	1
	190-200	3

Species	hwy mp	#
ELK		
082A		
	0-10	7
	20-30	1
	30-40	5
091A		
	0-10	2
	10-20	6
092A		
	50-60	1
133A		
	30-40	1
135A		
	0-10	1
139A		
	30-40	1
13A		
	50-60	1
141A		
	120-13C	1
FOX		
024A		
	180-19C	1
040A		
	130-14C	1
070A		
	150-16C	1
	160-17C	3
	170-18C	1
070B		
	160-17C	1
082A		
	10-20	3
091A		
	10-20	1
550B		
	110-12C	1
	120-13C	1

Species	hwy mp	#
HORSE		
318A		
	40-50	2
MOOSE		
009C		
	90-100	2
070A		
	200-210	4
PORCUPINE		
009C		
	80-90	3
040A		
	130-140	1
	140-150	1
	150-160	1
	97.1-121	6
070A		
	190-200	2
330A		
	0-10	1
PRONGHORN		
040A		
	0-10	1
	20-30	1
050A		
	40-50	1
070A		
	0-10	1
125A		
	20-30	1
RABBIT		
009C		
	80-90	1
009D		
	100-110	1
024A		
	170-180	1
	190-200	1

Region 3 road kill update, EOY 2018

1/23/2019

Species	hwy mp	#
RABBIT		
040A		
	90-100	1
	100-110	3
	110-120	1
131B		
	20-30	3
RACCOON		
006E		
	160-170	1
	170-180	1
009C		
	90-100	1
013A		
	0-10	1
040A		
	90-100	8
	100-110	9
	110-120	5
	120-130	9
	130-140	1
	97-121	11
050A		
	30-40	1
070A		
	120-130	1
092A		
	20-30	1
131B		
	0-10	1
	60-70	1
133A		
	0-10	1
141B		
	150-160	4
330A		
	10-20	1

Species	hwy mp	#
SKUNK		
040A		
	100-110	4
	110-120	5
	120-130	5
070A		
	140-150	1
114A		
	90-100	1
131B		
	40-50	1
	60-70	1
TURKEY		
141A		
	110-120	3
UNK		
006A		
	10-20	2
006D		
	92.1-110	7
006E		
	160-170	1
006F		
	210-220	1
009D		
	100-110	2
	110-120	3
	120-130	2
024A		
	180-190	1
040A		
	90-100	4
	120-130	2
	130-140	1
	170-180	1
	97-127	32

Species	hwy mp	#
UNK		
050A		
	30-40	1
	80-90	2
	90-100	1
	100-110	1
	110-120	3
	120-130	2
070A		
	90-100	2
	100-110	2
	110-120	1
	130-140	1
	150-160	2
	160-170	1
	200-210	4
070B		
	0-10	2
082A		
	60-70	4
091A		
	0-10	4
	10-20	3
	20-30	1
092A		
	20-30	6
131B		
	40-50	1
	60-70	1
	22-68	5
133A		
	0-10	5
	30-40	1
139A		
	0-10	2
330A		
	0-10	1

Region 3 road kill update, EOY 2018

1/23/2019

Species		
hwy		
mp		#
UNK		
340A		
0-10		2
550B		
110-120		1
120-130		2

PATROLS REPORTING	
3201	3233
3202	3240
3203	3241
3204	3242
3205	3243
3206	3244
3207	3245
3208	3246
3209	3247
3210	3251
3211	3252
3212	3253
3214	3254
3215	3603
3216	3604
3217	3605
3218	3608
3219	3612
3220	3613
3221	3614
3222	3619
3225	3621
3226	3623
3227	3627
3228	3633
3229	3636
3230	3637
3232	

Region 4 road kill update, EOY 2018

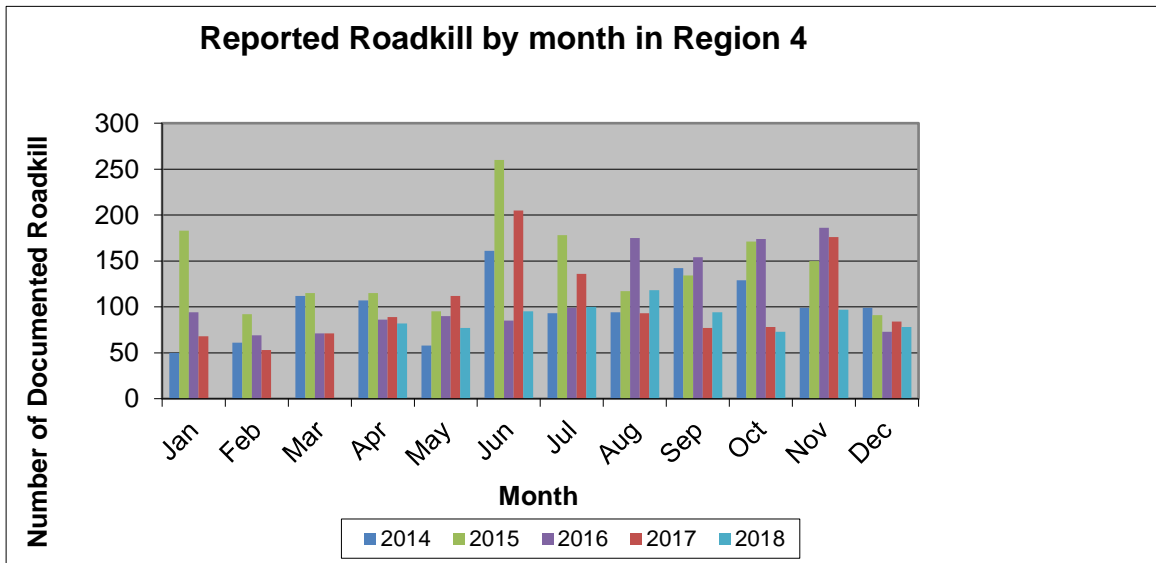
1/22/2019

Totals from CDOT personnel

Total number of reported animals killed: 814

Note: Due to a possible compromise in the data, all calculations January - March have been excluded from this report

BY MONTH	2014	2015	2016	2017	2018
Jan	50	183	94	68	-
Feb	61	92	69	53	-
Mar	112	115	71	71	-
Apr	107	115	86	89	82
May	58	95	90	112	77
Jun	161	260	85	205	95
Jul	93	178	99	136	100
Aug	94	117	175	93	118
Sep	142	134	154	77	94
Oct	129	171	174	78	73
Nov	99	150	186	176	97
Dec	99	91	73	84	78
Total	1205	1701	1356	1242	814



Region 4 road kill update, EOY 2018

1/22/2019

2018 BY SPECIES	
BADGER	8
BIRD	2
CAT	12
COYOTE	10
DEER	344
DOG	2
ELK	9
FOX	12
HAWK	5
OPOSSUM	6
OWL	2
PHEASANT	30
PRAIRIE DOC	5
PRONGHORN	6
RABBIT	58
RACCOON	60
SKUNK	37
TURKEY	1
UNK	205

Species by Month	
April	
BADGER	2
CAT	2
COYOTE	1
DEER	43
DOG	1
HAWK	1
OPOSSUM	1
PHEASANT	12
PRONGHORN	1
RABBIT	6
RACCOON	4
UNK	8
May	
CAT	3
DEER	37
PHEASANT	2
PRAIRIE DOC	4
PRONGHORN	1
RABBIT	4
RACCOON	4
SKUNK	3
UNK	19
June	
BADGER	1
DEER	50
FOX	1
OPOSSUM	1
PRAIRIE DOC	1
PRONGHORN	1
RABBIT	7
RACCOON	5
SKUNK	2
UNK	26

Species by Month	
July	
BADGER	1
CAT	3
COYOTE	1
DEER	38
ELK	1
FOX	3
PHEASANT	5
RABBIT	10
RACCOON	10
SKUNK	3
UNK	25
August	
BADGER	1
BIRD	1
DEER	22
ELK	3
FOX	4
HAWK	1
OPOSSUM	2
OWL	2
PHEASANT	4
RABBIT	10
RACCOON	9
SKUNK	11
UNK	48
September	
BADGER	1
BIRD	1
CAT	1
COYOTE	3
DEER	26
ELK	1
PHEASANT	2
PRONGHORN	3
RABBIT	5
RACCOON	11
SKUNK	7
UNK	33

Region 4 road kill update, EOY 2018

1/22/2019

SPECIES BY MONTH	
October	
CAT	1
DEER	36
DOG	1
ELK	1
OPOSSUM	1
PHEASANT	2
RABBIT	1
RACCOON	4
SKUNK	4
UNK	22
November	
CAT	1
COYOTE	4
DEER	52
ELK	2
FOX	1
HAWK	3
OPOSSUM	1
PHEASANT	1
RABBIT	8
RACCOON	10
SKUNK	2
UNK	12
December	
BADGER	2
CAT	1
COYOTE	1
DEER	40
ELK	1
FOX	3
PHEASANT	2
RABBIT	7
RACCOON	3
SKUNK	5
TURKEY	1
UNK	12

hwy	mp	#
001A		
0-10		1
006J		
370-380		1
390-400		3
410-420		2
440-450		3
460-470		1
007A		
0-10		1
10-20		1
20-30		3
30-40		1
014B		
60-70		5
70-80		2
80-90		3
100-110		1
110-120		3
014C		
140-150		3
150-160		1
190-200		1
200-210		2
210-220		3
220-230		1
024C		
440-450		1
024G		
350-360		6
360-370		3
370-380		1
025A		
220-230		1
230-240		3
240-250		3
250-260		4
260-270		1
270-280		1
280-290		2
290-300		2

hwy	mp	#
034A		
80-90		6
100-110		1
140-150		3
034B		
150-160		1
160-170		8
170-180		3
180-190		3
190-200		4
200-210		2
210-220		6
220-230		6
230-240		8
240-250		9
250-260		10
036A		
0-10		1
036B		
0-10		5
10-20		8
20-30		16
30-40		2
036D		
130-140		6
140-150		5
150-160		3
160-170		4
170-180		27
180-190		17
190-200		10
200-210		20
210-220		14
220-230		12
240-250		1

Region 4 road kill update, EOY 2018
1/22/2019

hwy mp	#
040H	
380-390	1
390-400	2
420-430	1
430-440	5
440-450	3
450-460	10
470-480	7
052A	
0-10	7
60-70	2
059A	
40-50	5
60-70	23
059B	
70-80	12
80-90	3
90-100	4
100-110	7
110-120	4
120-130	4
130-140	7
150-160	4
060B	
0-10	1
061A	
0-10	3
10-20	1
063A	
0-10	9
10-20	7
30-40	1
066B	
20-30	9
30-40	24
50-60	1

hwy mp	#
070A	
320-330	4
330-340	11
340-350	2
390-400	1
400-410	2
410-420	3
430-440	1
440-450	1
071D	
120-130	1
130-140	4
140-150	2
150-160	6
160-170	10
170-180	5
071E	
180-190	1
190-200	1
071F	
200-210	1
210-220	5
220-230	5
230-240	1
076A	
10-20	8
20-30	7
60-70	3
70-80	8
80-90	2
90-100	1
100-110	7
120-130	2
170-180	4
180-190	3
085A	
240-250	13

hwy mp	#
085C	
240-250	4
250-260	1
260-270	1
085L	
280-290	1
290-300	3
086A	
10-20	3
20-30	1
119A	
20-30	2
30-40	1
119B	
40-50	22
50-60	4
138A	
10-20	5
20-30	3
50-60	1
144A	
10-20	3
20-30	10
157A	
0-10	3
257A	
0-10	2
10-20	1
287C	
320-330	1
350-360	28
360-370	18
370-380	16
380-390	12

Region 4 road kill update, EOY 2018
1/22/2019

hwy mp	#
385C	
150-160	1
160-170	2
180-190	1
200-210	34
210-220	29
230-240	1
385D	
210-220	2
220-230	6
230-240	1
240-250	8
250-260	4
260-270	3

Species hwy mp	#
BADGER	
034B	
210-220	1
036D	
170-180	1
190-200	1
059A	
60-70	1
059B	
70-80	1
80-90	1
063A	
10-20	1
385C	
210-220	1
BIRD	
071D	
150-160	1
170-180	1
CAT	
034B	
200-210	1
230-240	1
036D	
170-180	2
180-190	1
190-200	1
200-210	1
063A	
30-40	1
066B	
30-40	2
071D	
160-170	1
144A	
20-30	1

Species hwy mp	#
COYOTE	
034B	
220-230	1
036D	
190-200	1
200-210	1
210-220	1
040H	
440-450	1
059A	
60-70	2
063A	
10-20	1
071D	
130-140	1
385C	
200-210	1
DEER	
001A	
0-10	1
006J	
390-400	3
460-470	1
007A	
10-20	1
20-30	2
014B	
60-70	5
70-80	2
80-90	3
100-110	1
110-120	3
014C	
140-150	3
190-200	1
200-210	2
210-220	3
220-230	1
024C	
440-450	1

Region 4 road kill update, EOY 2018
1/22/2019

Species	hwy mp	#
DEER		
024G		
	350-360	5
	360-370	3
	370-380	1
025A		
	220-230	1
	230-240	2
	240-250	2
	250-260	3
	260-270	1
	270-280	1
	280-290	2
	290-300	2
034A		
	100-110	1
	140-150	3
	80-90	6
034B		
	150-160	1
	160-170	3
	170-180	1
	190-200	2
	200-210	1
	220-230	1
	240-250	9
	250-260	9
036A		
	0-10	1
036B		
	0-10	3
	10-20	7
	20-30	8
	30-40	2
036D		
	130-140	5
	140-150	2
	170-180	4
	180-190	4
	210-220	1

Species	hwy mp	#
DEER		
040H		
	380-390	1
	390-400	1
	420-430	1
	430-440	5
	450-460	2
052A		
	60-70	2
059A		
	40-50	1
	60-70	3
059B		
	90-100	1
	110-120	1
061A		
	0-10	1
063A		
	10-20	2
066B		
	20-30	6
	30-40	1
070A		
	320-330	4
	330-340	7
	340-350	2
	390-400	1
	400-410	2
	410-420	3
	430-440	1
	440-450	1
	329-340.3	4
071D		
	120-130	1
	130-140	1
	150-160	2
	160-170	2
	170-180	3
071E		
	180-190	1
	190-200	1

Species	hwy mp	#
DEER		
071F		
	200-210	1
	210-220	1
	220-230	1
076A		
	20-30	1
	60-70	7
	70-80	2
	80-90	3
	90-100	3
	100-110	6
	120-130	2
	170-180	1
	180-190	2
	67-80	5
085C		
	240-250	4
	250-260	1
	260-270	1
086A		
	10-20	3
	20-30	1
119B		
	40-50	1
	50-60	1
138A		
	10-20	1
144A		
	10-20	1
	20-30	5
157A		
	0-10	3
287C		
	320-330	1
	350-360	16
	360-370	14
	370-380	14
	380-390	12
	357-365	5

Region 4 road kill update, EOY 2018
1/22/2019

Species	hwy mp	#
DEER		
385C		
	180-190	1
	200-210	3
	210-220	3
385D		
	210-220	2
	220-230	6
	230-240	1
	240-250	8
	250-260	4
	260-270	3
DOG		
014C		
	150-160	1
257A		
	0-10	1
ELK		
007A		
	0-10	1
036B		
	0-10	2
	10-20	1
	20-30	2
085L		
	280-290	1
287C		
	350-360	2
FOX		
036D		
	130-140	1
	140-150	3
	160-170	2
	170-180	1
	190-200	1
	210-220	1
059A		
	60-70	1

Species	hwy mp	#
FOX		
063A		
	0-10	1
119B		
	50-60	1
HAWK		
036D		
	170-180	1
	190-200	1
059B		
	100-110	1
	70-80	1
063A		
	0-10	1
OPOSSUM		
036D		
	200-210	1
385C		
	200-210	4
	210-220	1
OWL		
063A		
	10-20	1
287C		
	360-370	1
PHEASANT		
034B		
	190-200	1
	230-240	6
036D		
	170-180	1
	180-190	2
	190-200	1
	200-210	7
	210-220	2
	220-230	2
059A		
	60-70	1

Species	hwy mp	#
PHEASANT		
059B		
	70-80	2
	90-100	2
071D		
	160-170	1
385C		
	200-210	1
	210-220	1
PRAIRIE DOG		
066B		
	30-40	4
385C		
	230-240	1
PRONGHORN		
040H		
	390-400	1
071F		
	230-240	1
085L		
	291.1-309.5	3
287C		
	370-380	1
RABBIT		
034B		
	210-220	1
	220-230	1
036D		
	20-30	1
	150-160	3
	170-180	2
	180-190	6
	200-210	4
	210-220	2
	220-230	3
	240-250	1
059A		
	60-70	3

Region 4 road kill update, EOY 2018

1/22/2019

Species	hwy mp	#
RABBIT		
059B		
	70-80	4
	100-110	5
	110-120	2
	120-130	1
	130-140	1
063A		
	0-10	4
071D		
	130-140	2
	160-170	3
119B		
	40-50	2
385C		
	200-210	3
	210-220	4

Species	hwy mp	#
RACCOON		
034B		
	230-240	1
	250-260	1
036B		
	20-30	3
036D		
	170-180	1
	200-210	2
	210-220	2
052A		
	4.7-11.2	5
059B		
	70-80	1
066B		
	20-30	1
	30-40	9
	50-60	1
071D		
	150-160	1
119A		
	20-30	2
	30-40	1

Species	hwy mp	#
RACCOON		
119B		
	45.7-53	5
144A		
	20-30	1
287C		
	360-370	1
385C		
	200-210	9
	210-220	13
SKUNK		
034B		
	180-190	2
	190-200	1
	210-220	1
	220-230	1
036D		
	160-170	2
	170-180	4
	180-190	1
	190-200	1
	200-210	1
	210-220	1
052A		
	0-10	2
059A		
	60-70	5
059B		
	120-130	2
	130-140	2
	70-80	1
	80-90	1
063A		
	0-10	1
	10-20	2
287C		
	350-360	3
	360-370	1
385C		
	200-210	1
	210-220	1

Species	hwy mp	#
TURKEY		
059B		
	70-80	1
UNK		
006J		
	370-380	1
	410-420	1
	440-450	1
	415.8-445.7	3
007A		
	20-30	1
	30-40	1
024G		
	350-360	1
025A		
	230-240	1
	240-250	1
	250-260	1
034B		
	160-170	5
	170-180	2
	180-190	1
	209.8-237.4	5
036B		
	20-30	3
036D		
	170-180	7
	220-230	6
	178-224.7	13
040H		
	440-450	2
	450-460	2
	470-480	1
	459-486.9	12
059A		
	40-50	4
	60-70	7

Region 4 road kill update, EOY 2018

1/22/2019

Species	hwy	mp	#
UNK			
059B			
	70-80		1
	130-140		2
	150-160		1
	74-158		7
060B			
	0-10		1
061A			
	0-21.7		3
063A			
	0-10		2
066B			
	20-30		2
	30-40		8
071D			
	170-180		1
	138-174		7
071F			
	205.6-232.8		7
076A			
	10-20		5
	80-90		1
	66.5-85		7
085A			
	236.5-249.7		13
119B			
	40-50		5
	50-60		2
	47-53		9
138A			
	10-20		2
	50-60		1
	19-43.5		5
144A			
	10.5-28.8		5
257A			
	0-10		1
	10-20		1
287C			
	350-360		2
	360-370		1
	370-380		1

Species	hwy	mp	#
UNK			
385C			
	150-160		1
	160-170		2
	200-210		12
	210-220		5

PATROLS REPORTING	
4101	4126
4102	4127
4103	4128
4104	4130
4105	4131
4107	4132
4108	4133
4109	4134
4110	4135
4112	4136
4114	4137
4115	4138
4116	4139
4117	4140
4118	4141
4119	4142
4120	4143
4121	4144
4122	4146
4123	4147
4124	4152
4125	4153

Region 5 road kill update, EOY 2018 (April - Dec)

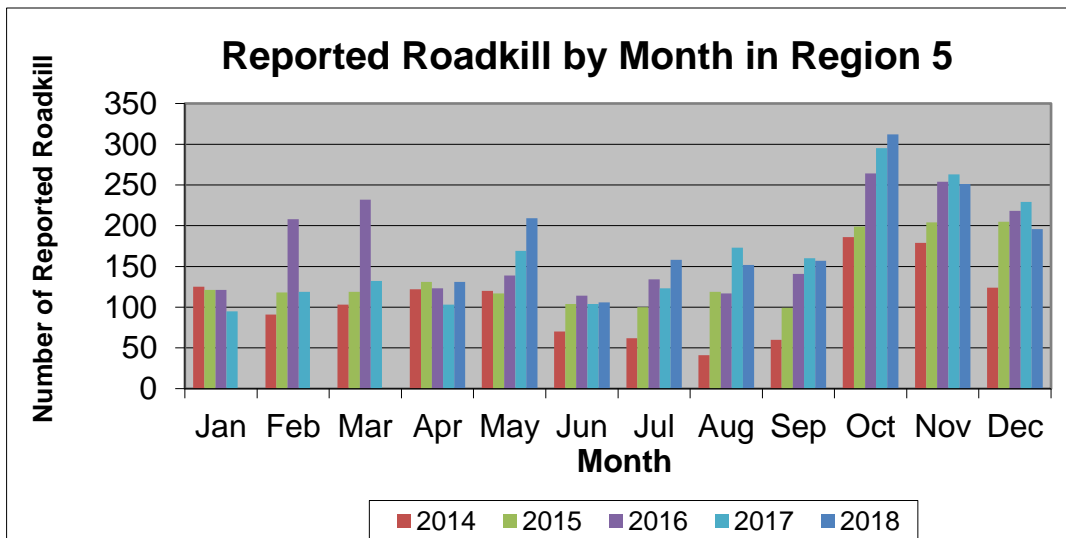
1/22/2019

Totals from CDOT personnel

Total number of reported animals killed 1672

Note: Due to a possible compromise in the data, all calculations January - March have been excluded from this report

BY MONTH	2014	2015	2016	2017	2018
Jan	125	121	121	95	-
Feb	91	118	208	119	-
Mar	103	119	232	132	-
Apr	122	131	123	103	131
May	120	117	139	169	209
Jun	70	104	114	104	106
Jul	62	100	134	123	158
Aug	41	119	117	173	152
Sep	60	99	141	160	157
Oct	186	199	264	295	312
Nov	179	204	254	263	251
Dec	124	205	218	229	196
Total	1283	1636	2065	1965	1672



Region 5 road kill update, EOY 2018 (April - Dec)

1/22/2019

2018 BY SPECIES							
BADGER	1		DEER	1365		PORCUPINE	2
BEAR	1		DOG	9		PRONGHORN	5
BEAVER	2		ELK	76		RABBIT	6
CAT	2		FOX	3		RACCOON	22
COW	6		HORSE	1		SKUNK	20
COYOTE	6		MARMOT	1		UNK	144

SPECIES BY MONTH	
April	
BEAVER	1
COW	1
DEER	107
DOG	1
ELK	4
SKUNK	1
UNK	16
May	
COYOTE	1
DEER	183
ELK	8
FOX	1
PRONGHORN	3
RABBIT	2
RACCOON	3
SKUNK	1
UNK	7
June	
BADGER	1
BEAR	1
CAT	1
COW	1
COYOTE	2
DEER	74
DOG	2
ELK	10
PRONGHORN	1
RACCOON	3
SKUNK	1
UNK	9

SPECIES BY MONTH	
July	
CAT	1
COYOTE	2
DEER	130
ELK	8
MARMOT	1
RACCOON	2
SKUNK	2
UNK	12
August	
DEER	121
DOG	1
ELK	4
FOX	1
UNK	25
September	
BEAVER	1
COW	2
DEER	115
DOG	2
ELK	13
FOX	1
PORCUPINE	2
RACCOON	6
SKUNK	7
UNK	8
DEER	73
ELK	3
PORCUPINE	1
RACCOON	20
SKUNK	45
UNK	25

SPECIES BY MONTH	
October	
COW	2
COYOTE	1
DEER	238
DOG	3
ELK	7
PRONGHORN	1
RABBIT	4
RACCOON	8
SKUNK	8
UNK	40
November	
DEER	235
ELK	10
UNK	6
December	
DEER	162
ELK	12
HORSE	1
UNK	21

Region 5 road kill update, EOY 2018 (April - Dec)
1/22/2019

hwy mp	#
003A	
0-10	5
015A	
0-10	1
017A	
0-10	1
30-40	1
017B	
70-80	4
024A	
190-200	5
200-210	52
210-220	34
220-230	10
050A	
110-120	1
170-180	1
180-190	1
200-210	1
210-220	16
220-230	8
230-240	4
062A	
0-10	7
10-20	6
20-30	2
084A	
0-10	10
10-20	23
20-30	40
112A	
0-10	9
114A	
20-30	2
40-50	7
50-60	12
136A	
0-10	1
140A	
0-10	7
10-20	4
20-30	4

hwy mp	#
141A	
0-10	1
20-30	1
80-90	1
145A	
0-10	30
10-20	14
20-30	2
30-40	3
40-50	3
50-60	2
60-70	6
70-80	6
80-90	1
149A	
0-10	3
10-20	1
20-30	5
30-40	1
150A	
0-10	2
151A	
0-10	14
10-20	6
20-30	15
30-40	6
159A	
0-10	1
10-20	3
20-30	6
30-40	1
160A	
0-10	3
10-20	1
20-30	4
30-40	20
40-50	41
50-60	38
60-70	35
70-80	11
80-90	38
90-100	81

hwy mp	#
110-120	29
120-130	41
130-140	61
140-150	26
100-110	63
150-160	1
160-170	1
170-180	1
180-190	28
190-200	49
200-210	11
210-220	9
220-230	10
230-240	11
240-250	1
250-260	11
260-270	4
270-280	3
160D	
0-10	1
172A	
0-10	25
10-20	23
20-30	22
184A	
0-10	19
20-30	1
30-40	1
184B	
0-10	3
10-20	31
20-30	2
285A	
10-20	2
30-40	3

Region 5 road kill update, EOY 2018 (April - Dec)
1/22/2019

hwy mp	#
285B	
50-60	4
80-90	6
100-110	5
110-120	9
120-130	1
285C	
120-130	5
130-140	16
140-150	15
291A	
0-10	15
368A	
0-10	2
491B	
10-20	1
20-30	47
30-40	70
40-50	89
50-60	42
60-70	36
70-80	1
90-100	1
550A	
0-10	21
10-20	28
90-100	1
100-110	2
110-120	1
550B	
20-30	13
30-40	5
40-50	5
50-60	1
90-100	6
100-110	26
110-120	15

Species hwy mp	#
BADGER	
491B 30-40	1
BEAR	
145A 10-20	1
BEAVER	
160A 250-260	2
CAT	
160A 30-40	1
491B 30-40	1
COW	
017A 30-40	1
145A 10-20	1
40-50	1
160A 180-190	1
368A 0-10	1
491B 30-40	1
COYOTE	
017B 70-80	1
084A 20-30	1
145A 60-70	1
160A 60-70	1
285B 80-90	1
491B 30-40	1

Species hwy mp	#
DEER	
003A 0-10	4
017A 0-10	1
017B 70-80	1
024A 190-200	5
200-210	51
210-220	33
220-230	10
050A 110-120	1
170-180	1
180-190	1
200-210	1
210-220	13
220-230	8
230-240	4
062A 0-10	3
20-30	1
084A 0-10	10
10-20	25
20-30	37
112A 0-10	2
114A 40-50	7
50-60	12
140A 0-10	6
10-20	3
20-30	4

Region 5 road kill update, EOY 2018 (April - Dec)
 1/22/2019

Species	hwy mp	#
DEER		
141A		
	0-10	1
	20-30	1
	80-90	1
145A		
	10-20	11
	20-30	2
	30-40	2
	40-50	2
	50-60	1
	60-70	2
	70-80	4
	80-90	1
	110-120	1
149A		
	0-10	3
	20-30	5
151A		
	0-10	12
	10-20	4
	20-30	10
	30-40	5
159A		
	20-30	5
160A		
	0-10	1
	30-40	1
	40-50	37
	50-60	38
	70-80	7
	80-90	37
	90-100	81
	100-110	62
	110-120	27
	120-130	57
	130-140	75
	140-150	24

Species	hwy mp	#
DEER		
160A		
	150-160	1
	180-190	16
	190-200	22
	200-210	11
	230-240	3
	250-260	7
	260-270	3
	270-280	2
160D		
	0-10	1
172A		
	0-10	15
	10-20	21
	20-30	19
184A		
	0-10	16
	20-30	1
	30-40	1
184B		
	0-10	2
	10-20	30
	20-30	1
285A		
	30-40	2
285B		
	50-60	3
	80-90	1
	100-110	2
	110-120	7
	120-130	1
285C		
	120-130	5
	130-140	10
	140-150	15
291A		
	0-10	14

Species	hwy mp	#
DEER		
491B		
	20-30	23
	30-40	55
	40-50	85
	60-70	27
	90-100	1
550A		
	0-10	21
	100-110	2
	10-20	25
	110-120	1
	90-100	1
550B		
	20-30	11
	30-40	5
	40-50	5
	50-60	1
	90-100	4
	100-110	13
	110-120	13
DOG		
017B		
	70-80	1
136A		
	0-10	1
160A		
	230-240	1
	240-250	1
	250-260	1
285A		
	10-20	1
	30-40	1
368A		
	0-10	1
491B		
	40-50	1

Region 5 road kill update, EOY 2018 (April - Dec)
1/22/2019

Species	hwy mp	#
ELK		
015A		
0-10		1
017B		
70-80		1
024A		
200-210		1
210-220		1
050A		
210-220		3
062A		
0-10		4
10-20		6
20-30		1
114A		
20-30		2
140A		
0-10		1
10-20		1
145A		
30-40		1
50-60		1
60-70		3
70-80		1
149A		
30-40		1
150A		
0-10		1
151A		
0-10		2
159A		
10-20		2
20-30		1
30-40		1
160A		
20-30		1
60-70		4
70-80		1
100-110		1
110-120		2

Species	hwy mp	#
ELK		
160A		
120-130		1
130-140		2
140-150		1
170-180		1
180-190		2
220-230		1
230-240		1
250-260		1
260-270		1
270-280		1
172A		
0-10		1
285B		
110-120		1
50-60		1
80-90		4
285C		
130-140		6
291A		
0-10		1
550B		
100-110		3
20-30		2
FOX		
150A		
0-10		1
160A		
220-230		1
30-40		1
HORSE		
159A		
0-10		1
MARMOT		
491B		
40-50		1

Species	hwy mp	#
PORCUPINE		
491B		
40-50		1
550B		
110-120		1
PRONGHORN		
112A		
0-10		1
285B		
100-110		3
110-120		1
RABBIT		
160A		
0-10		2
210-220		4
RACCOON		
160A		
220-230		4
184A		
0-10		1
491B		
20-30		4
30-40		2
40-50		6
550A		
10-20		3
550B		
100-110		1
110-120		1
SKUNK		
160A		
10-20		1
210-220		4
230-240		4
172A		
10-20		2
20-30		2
184B		
10-20		1

Region 5 road kill update, EOY 2018 (April - Dec)
 1/22/2019

Species	hwy mp	#
SKUNK		
491B		
	30-40	3
	40-50	3
UNK		
003A		
	0-10	1
112A		
	0-10	6
145A		
	0-10	5
	70-80	1
149A		
	10-20	1
151A		
	10-20	2
	20-30	5
	30-40	1
159A		
	10-20	1
160A		
	40-50	1
	60-70	7
	80-90	1
	140-150	1
	160-170	1
	180-190	9
	190-200	27
	210-220	1
	230-240	2
172A		
	0-10	9
	20-30	1
184A		
	0-10	2
184B		
	0-10	1
	20-30	1
285A		
	10-20	1

Species	hwy mp	#
UNK		
491B		
	10-20	1
	20-30	17
	30-40	11
	40-50	6
	50-60	6
	60-70	4
550B		
	100-110	9
	90-100	2

PATROLS REPORTING	
5301	5702
5302	5703
5303	5704
5304	5705
5305	5707
5307	5708
5310	5709
5311	5711
5312	5717
5315	5718
5317	5719
5319	5723
5320	5724
5321	5725
5324	5727
5327	5728
5397	5788
5701	

Statewide deer counts

Note: Due to a possible compromise in the data, the year 2018 has been excluded from these tables.

