



**COLORADO**  
Department of Transportation

# HB23-1101 TPR Study

Region 3 Maps  
August 3, 2023



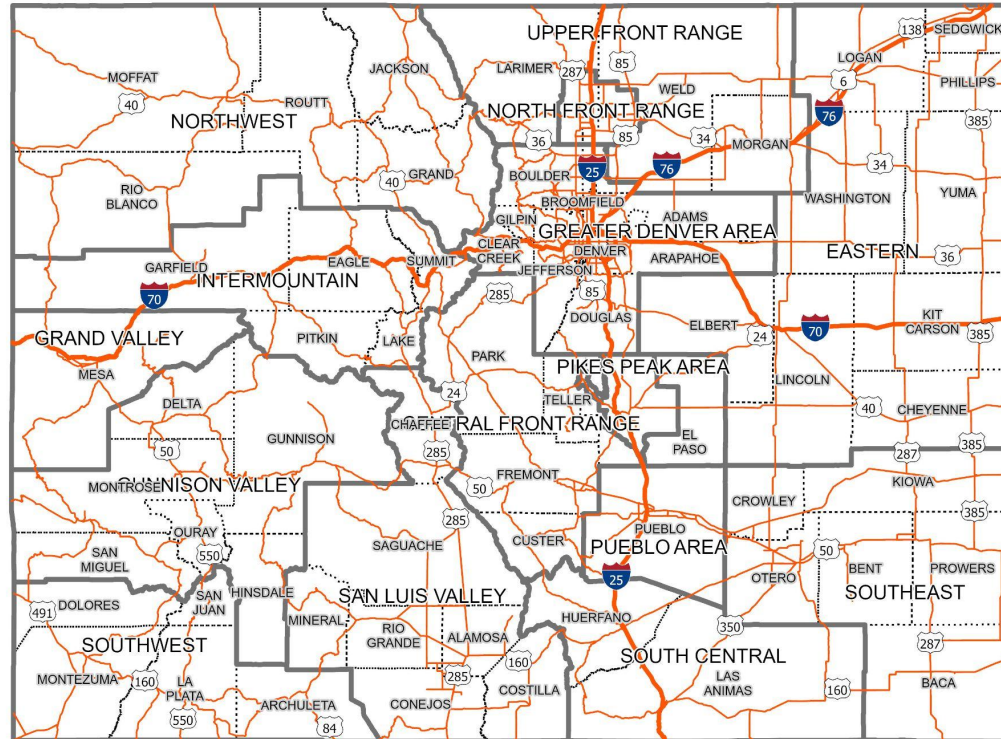


# Statewide Maps





# Highway Corridors





### Statutory Requirement: Transit Corridors

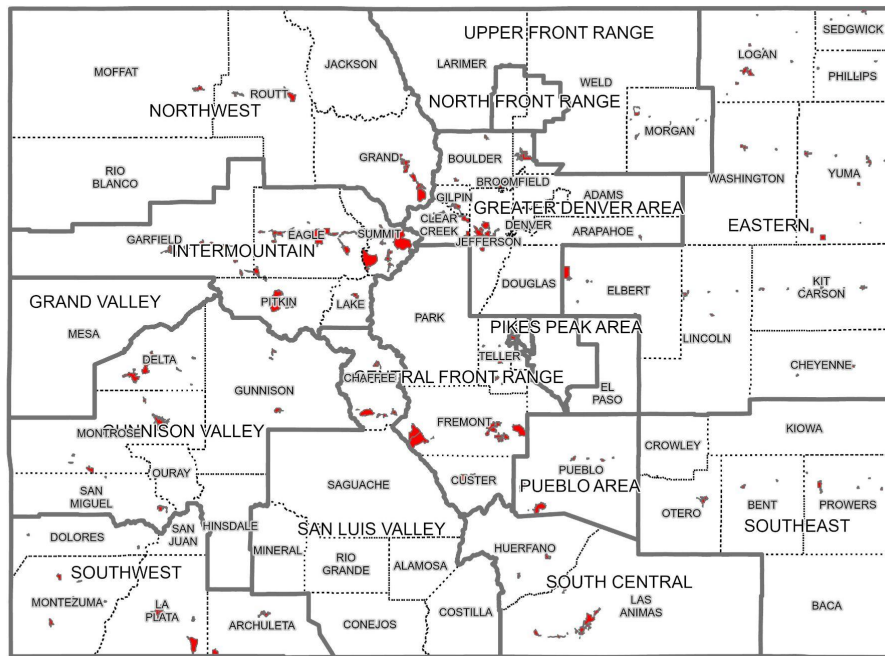




# Transit District Boundaries

## TPR Boundary Analysis - Transit Service for Census Designated Places

Statutory Requirement: Transit District Boundaries

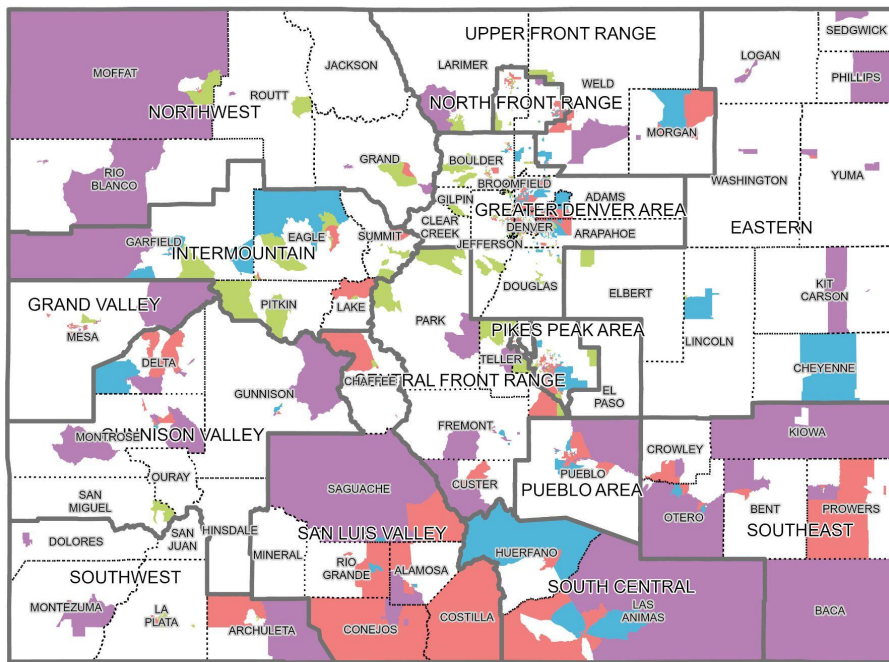




# Disproportionately Impacted Communities

## TPR Boundary Analysis - Disproportionately Impacted Communities

Statutory Requirement: Disproportionately Impacted Communities



0 30 Miles

More than one category  
People of Color

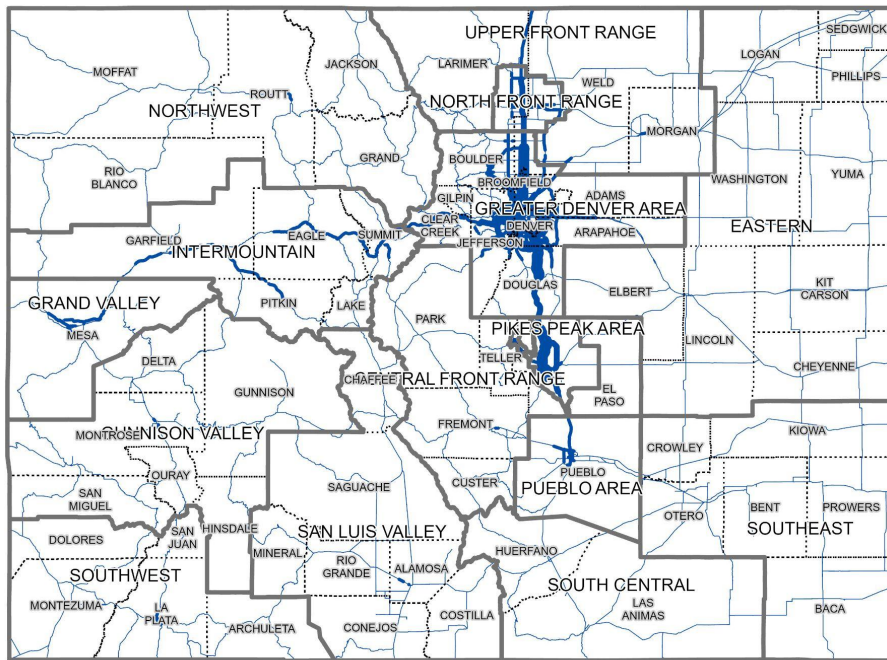
Housing Burden  
Low Income

Source: CDOT 2021



## TPR Boundary Analysis - Vehicle Miles Travelled

Statutory Requirement: Vehicle Miles Travelled



0 30 Miles

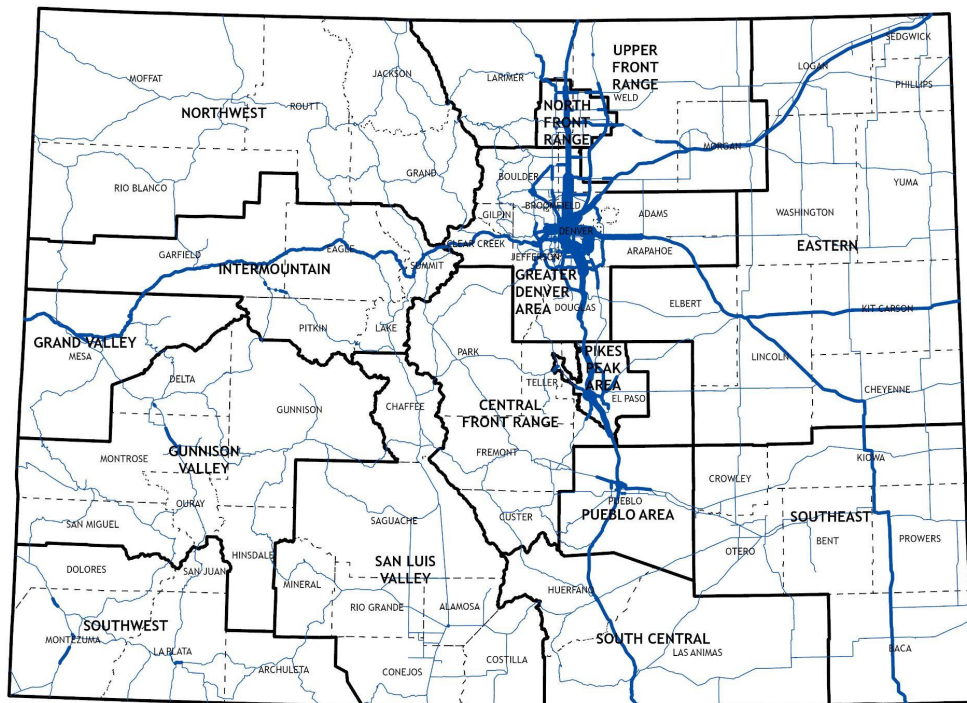
0-2000 2000-5000 5000-10000 >10000

Source: CDOT 2021

# Truck Vehicle Miles Traveled

## TPR Boundary Analysis - Truck Vehicle Miles Travelled

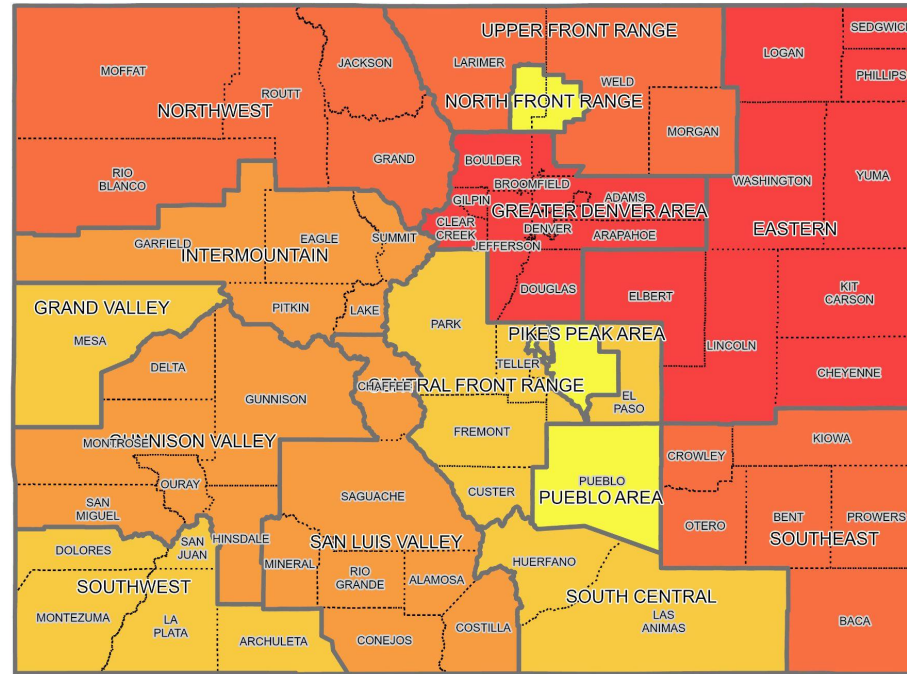
Statutory Requirement: Truck Vehicle Miles Travelled





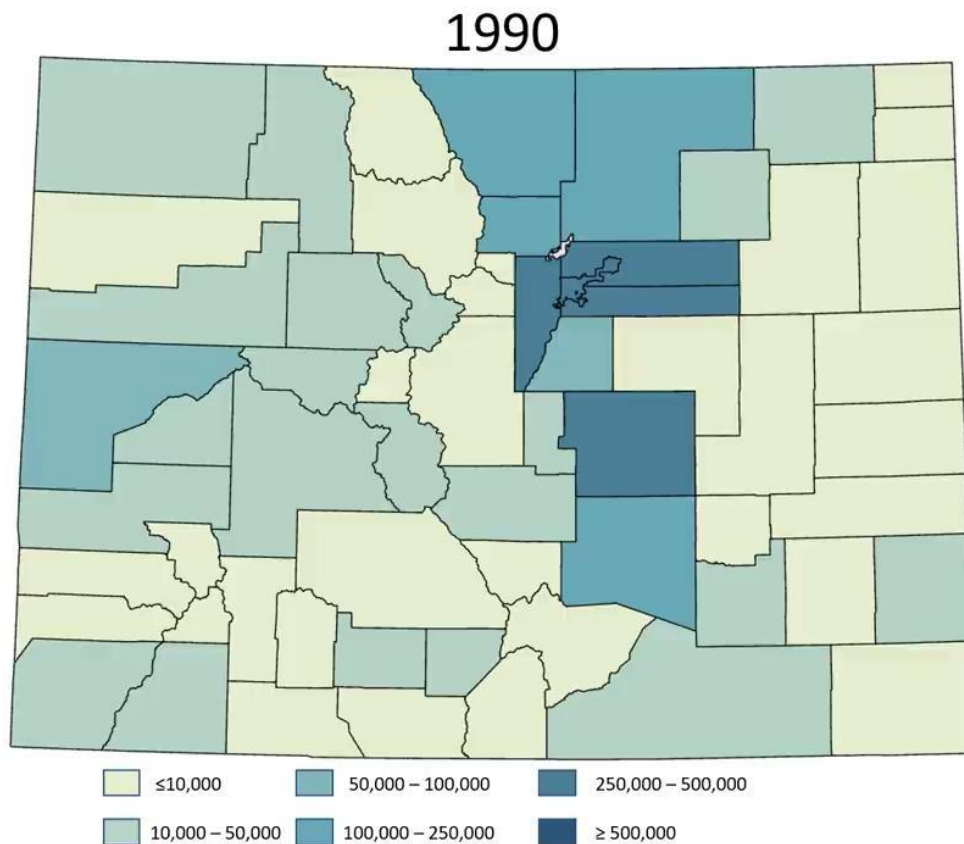
## TPR Boundary Analysis - Lane Miles by TPR

Statutory Requirement: Lane Miles





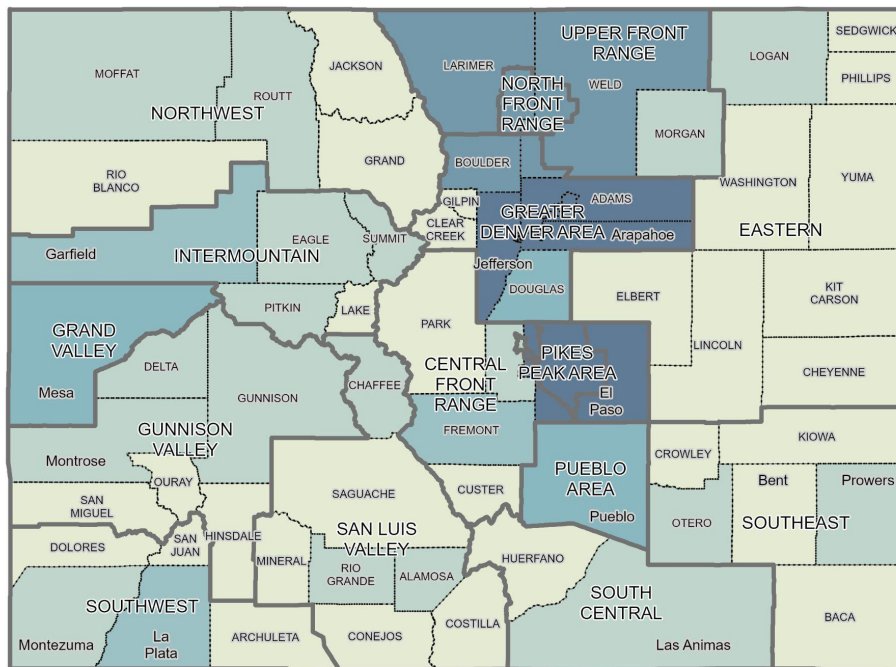
# Visualization of Population Change by County





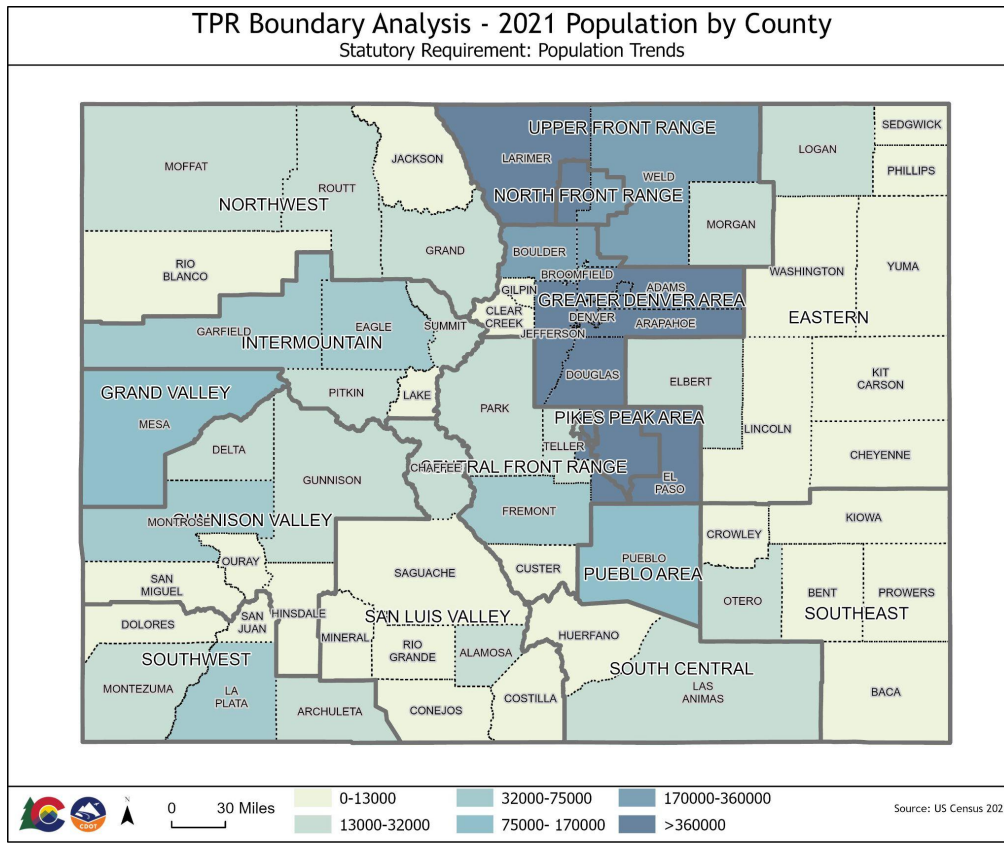
## TPR Boundary Analysis - 1990 Population by County

Statutory Requirement: Population Trends



\*Broomfield City/County did not exist in 1990

# 2021 Population by County



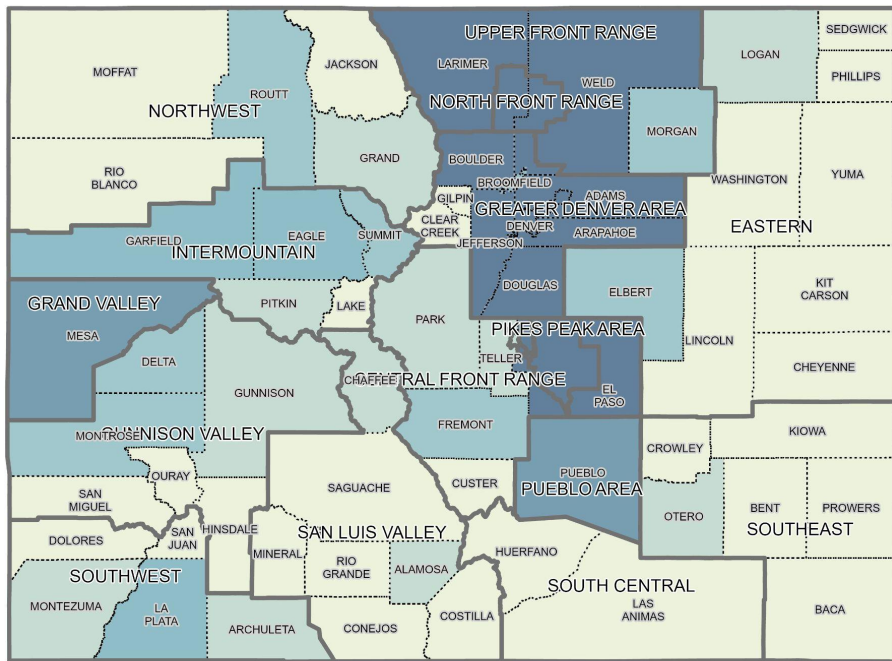




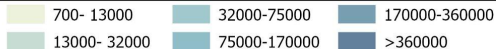
# 2050 County Population Projection

## TPR Boundary Analysis - 2050 County Population Projection

Statutory Requirement: Population Trends

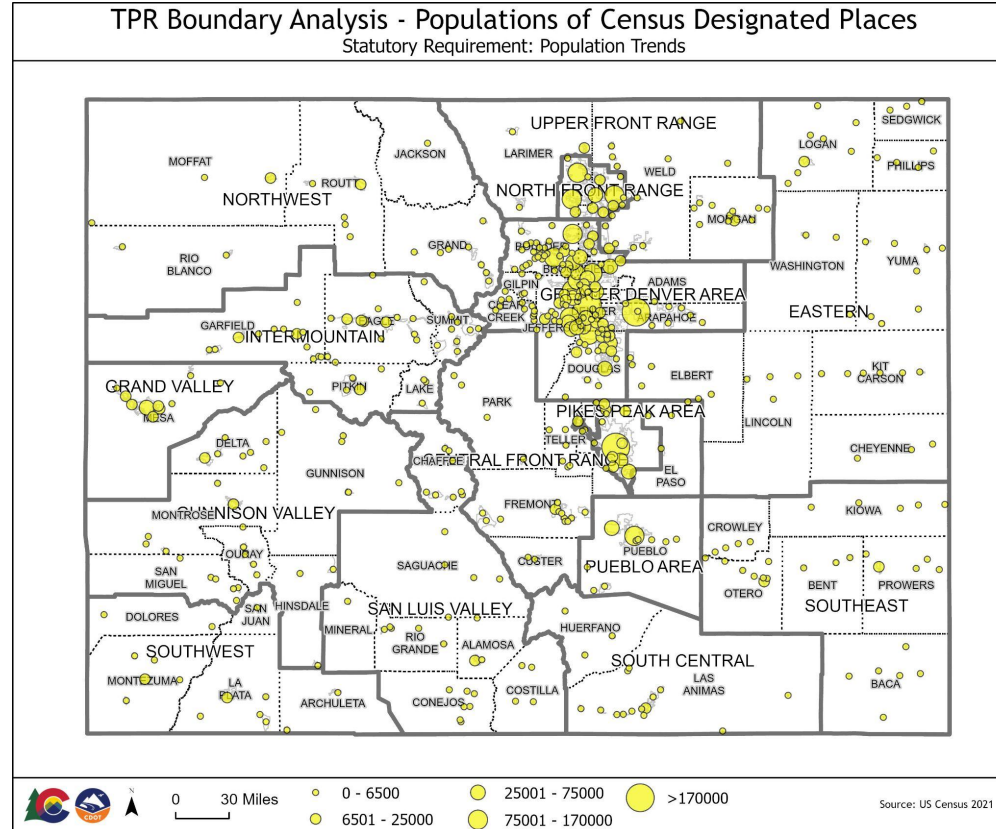


0 30 Miles



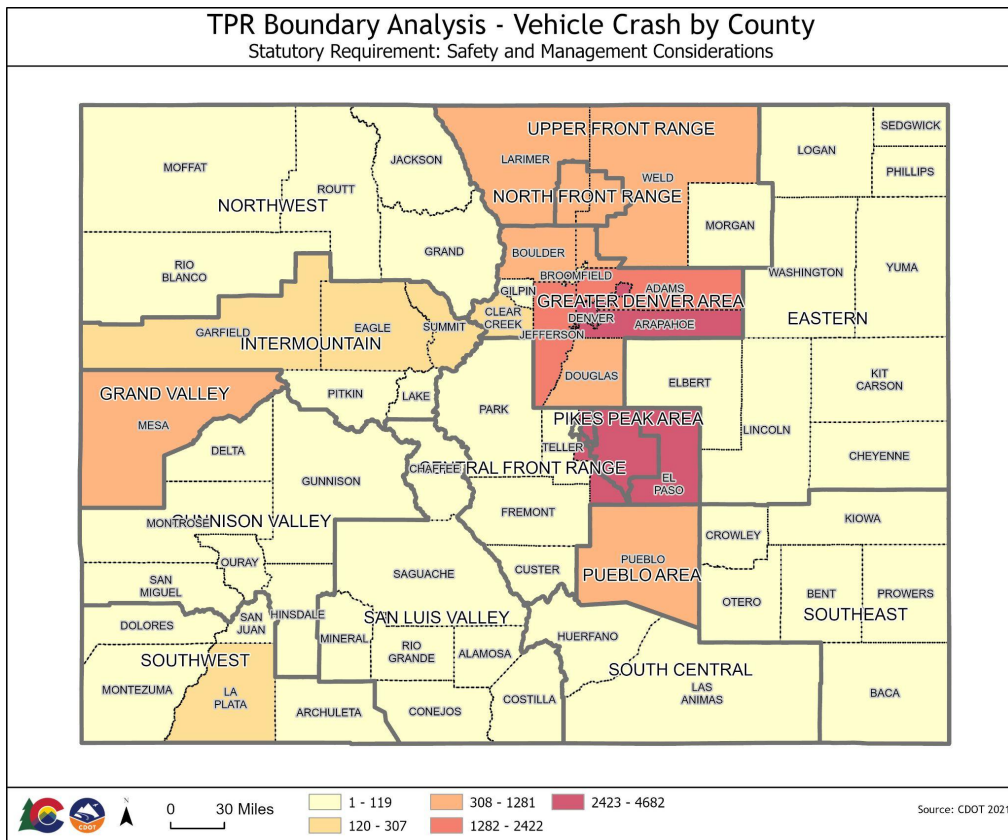
Source: DOLA 2020

# Populations of Census Designated Places





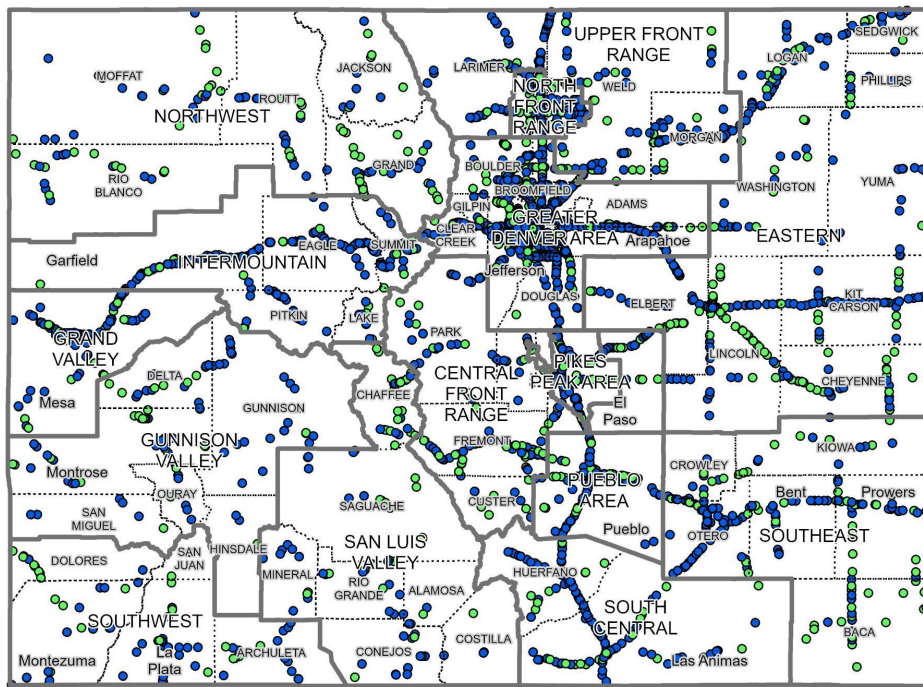
# Vehicle Crashes by County





## TPR Boundary Analysis - Bridges and Major Culverts

Statutory Requirement: Safety and Management Considerations





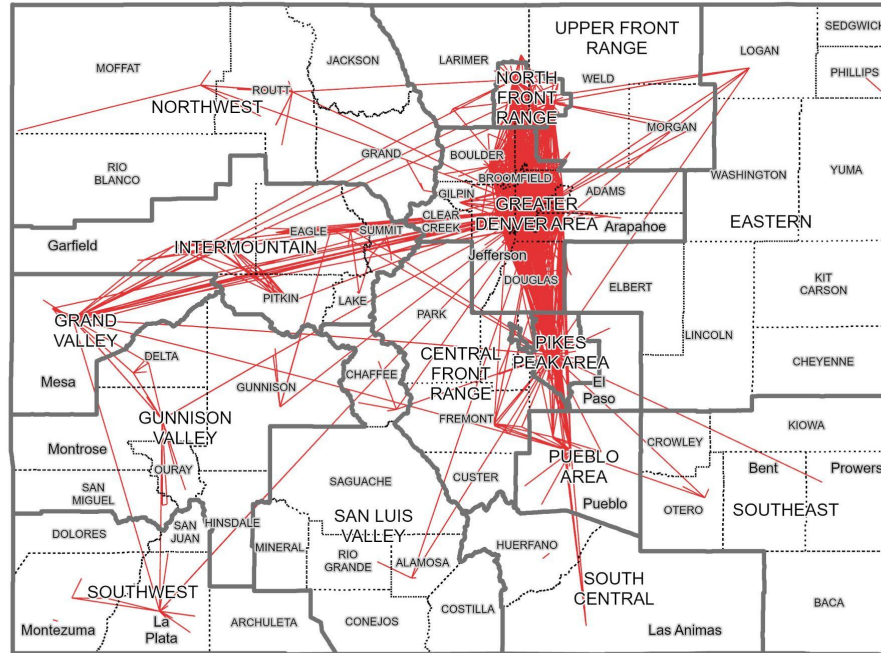
### Statutory Requirement: Safety and Management Considerations



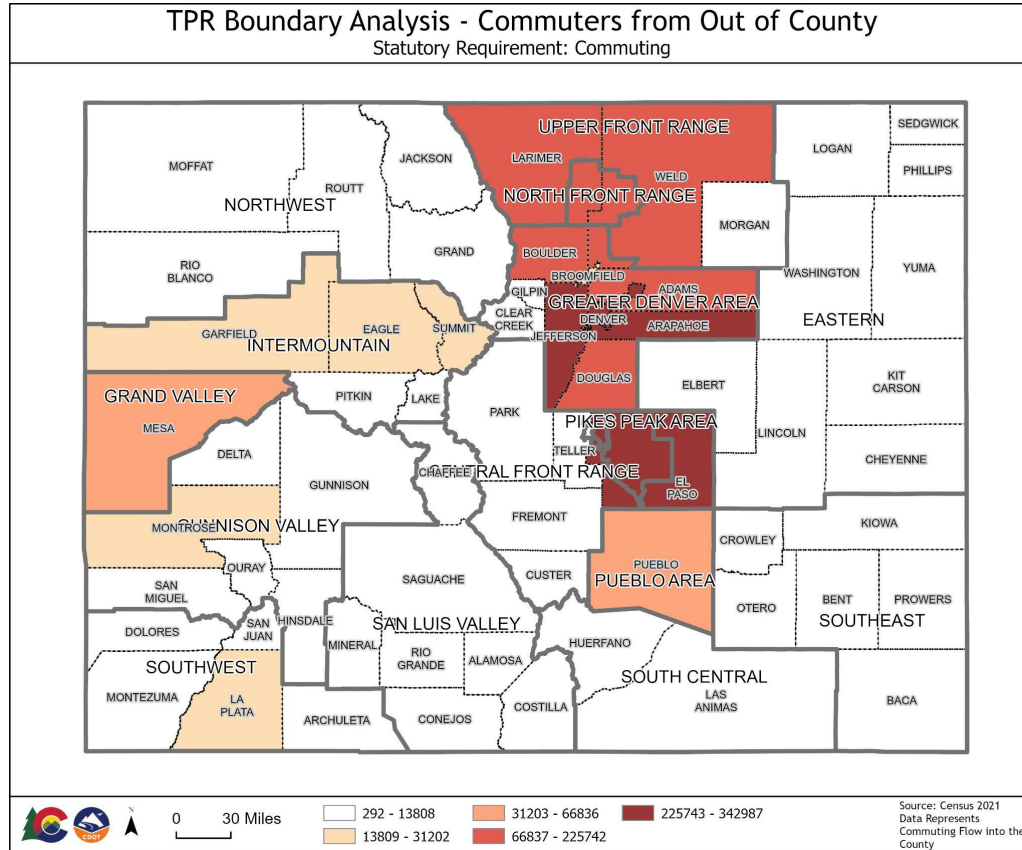
Source: CDOT 2021

# Commuter Origin and Destination

TPR Boundary Analysis - Commuter Origin and Destination (100+ Commuters)  
Statutory Requirement: Commuting



# Commuters from Out of County



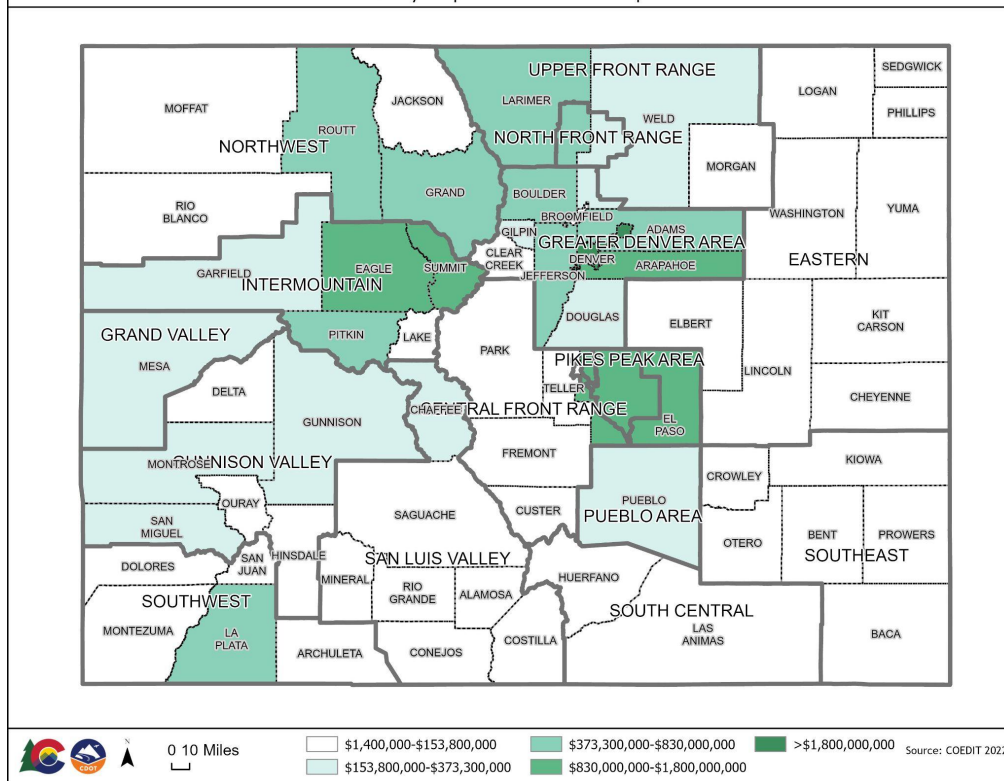




# County Level Tourism Direct Travel Spending

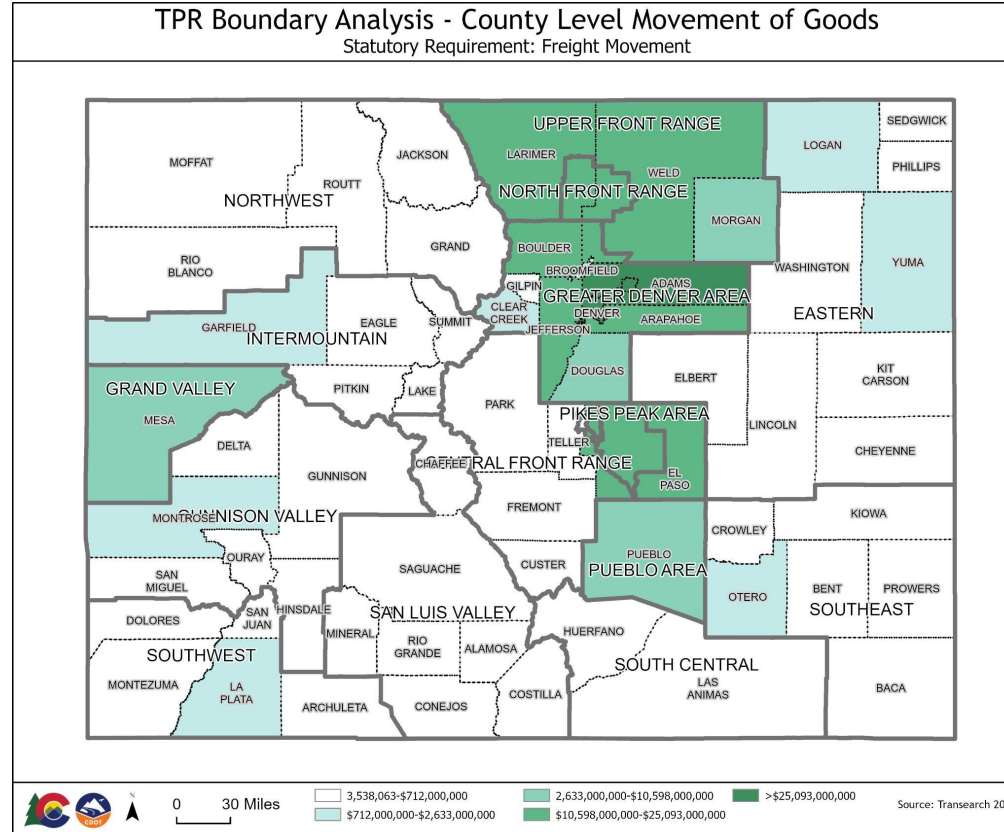
## TPR Boundary Analysis - County Level Tourism Statistics (Direct Travel Spending)

Statutory Requirement: Tourism Impacts



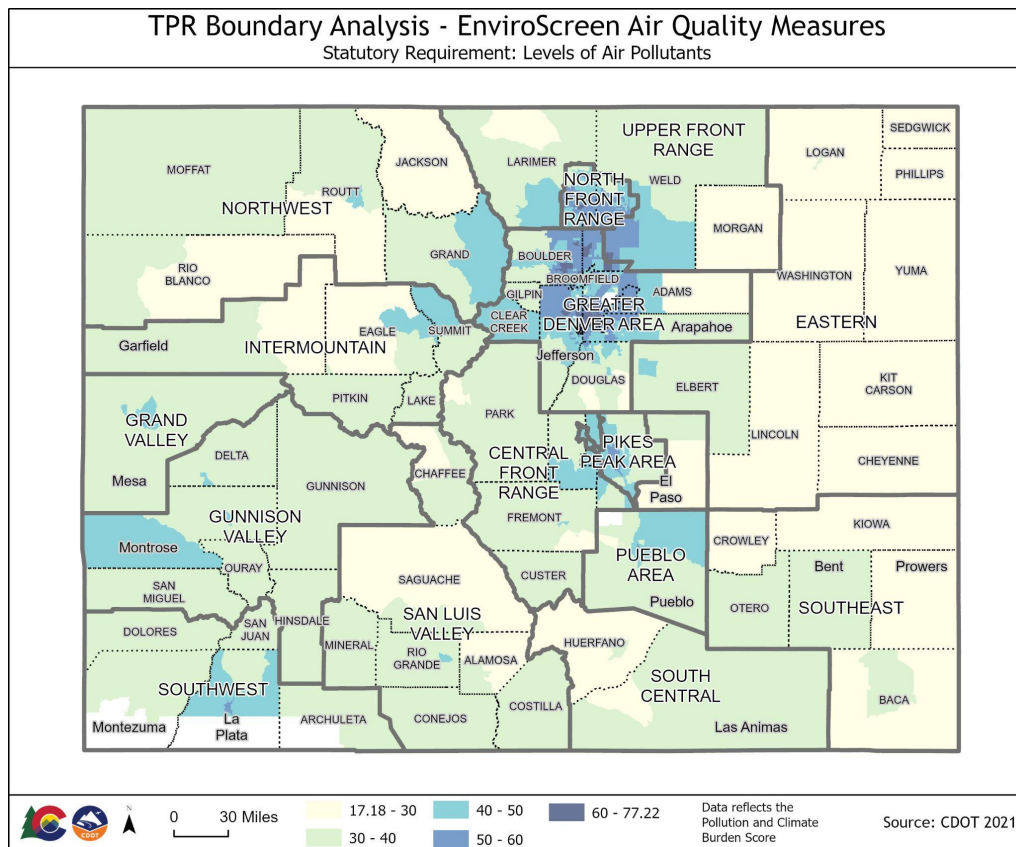


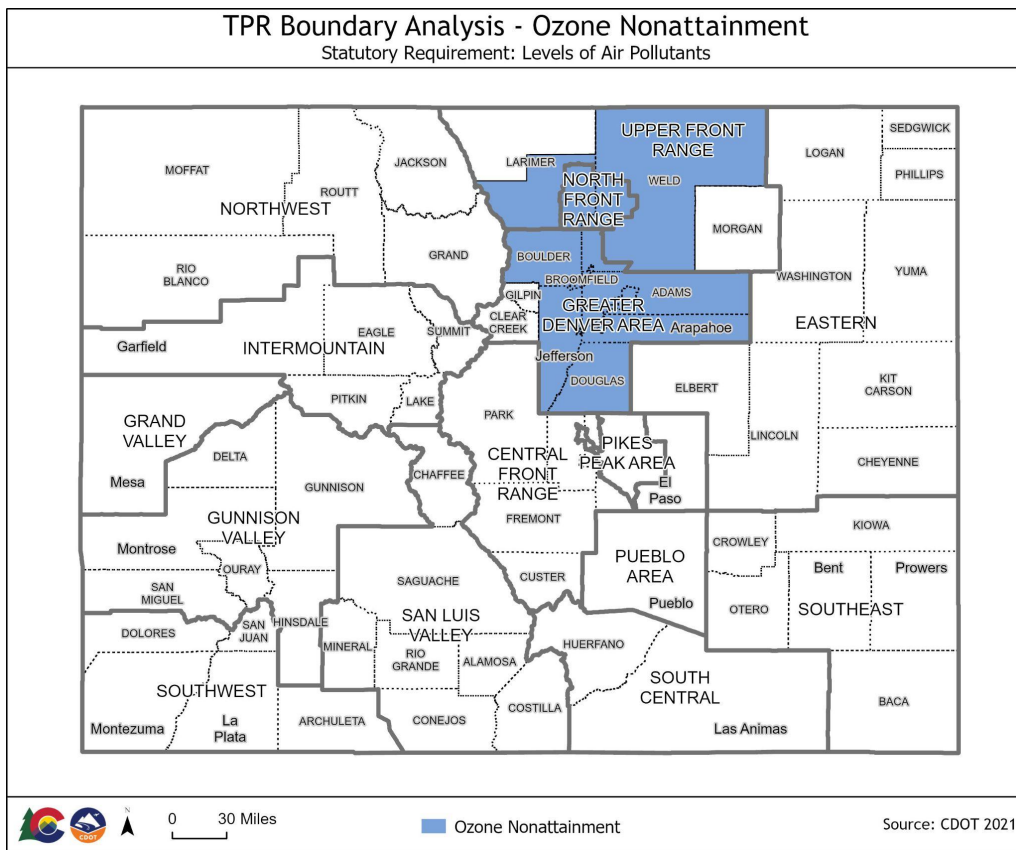
# County Level Movement of Goods





# Levels of Air Pollutants: Air Quality Measures





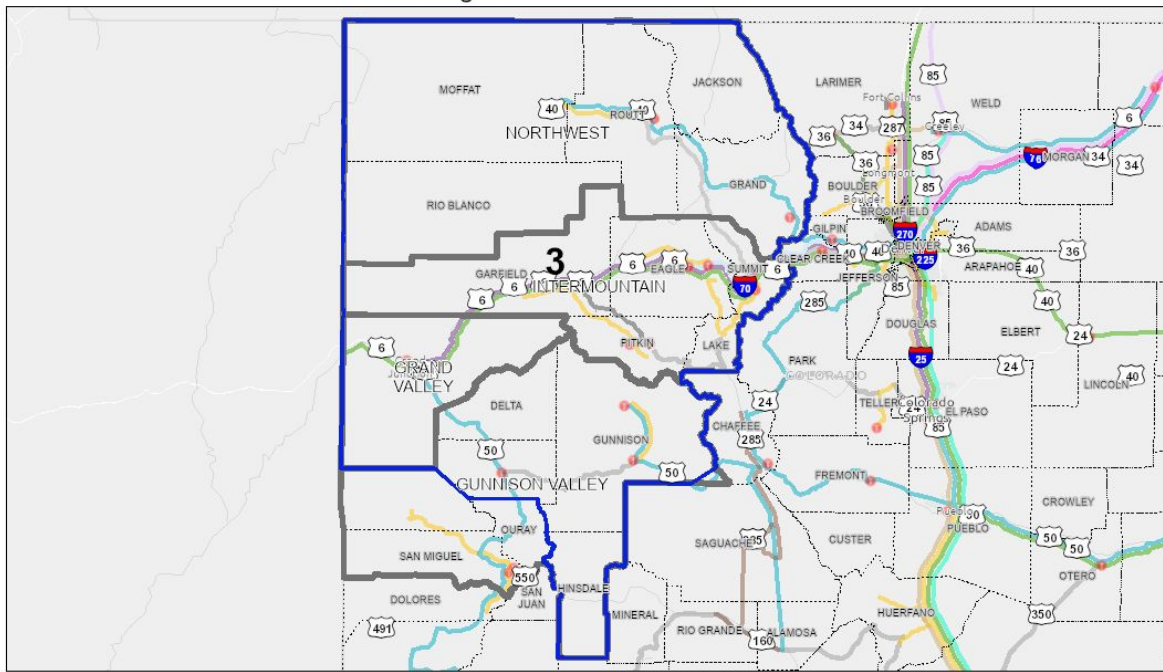




# Region TPR Specific Maps

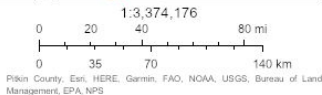


## Region 3 Transit Corridors



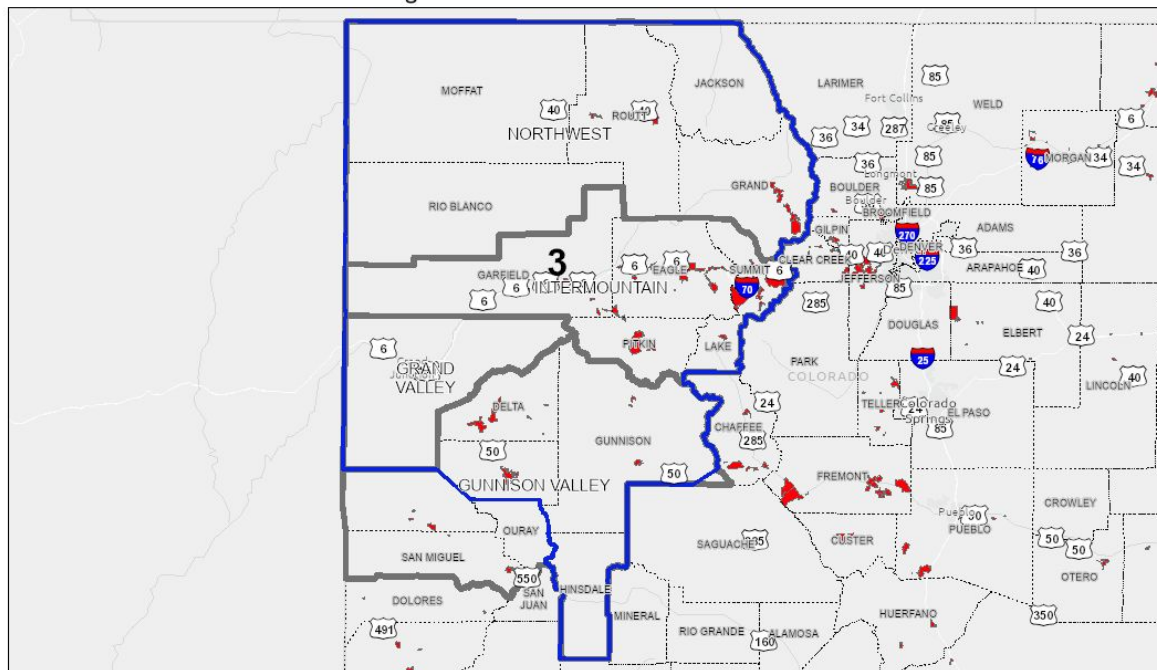
8/2/2023, 12:58:37 PM

- Highways for Arno
- CDOT Engineering Regions
- Transportation Planning Regions (TPR)
- County Boundaries
- Local Transit Systems
- Bus Rapid Transit
- Flatiron Flyer: Denver to Boulder
- MAX: Fort Collins
- VelociRFTA: Aspen to Glenwood Springs
- Intercity Bus Routes
- Burlington Trailways
- Chaffee Shuttle






# Transit District Boundaries

Region 3 Transit District Boundaries



8/2/2023, 1:09:32 PM

-  Highways for Anno
-  CDOT Engineering Regions
-  Transportation Planning Regions (TPR)

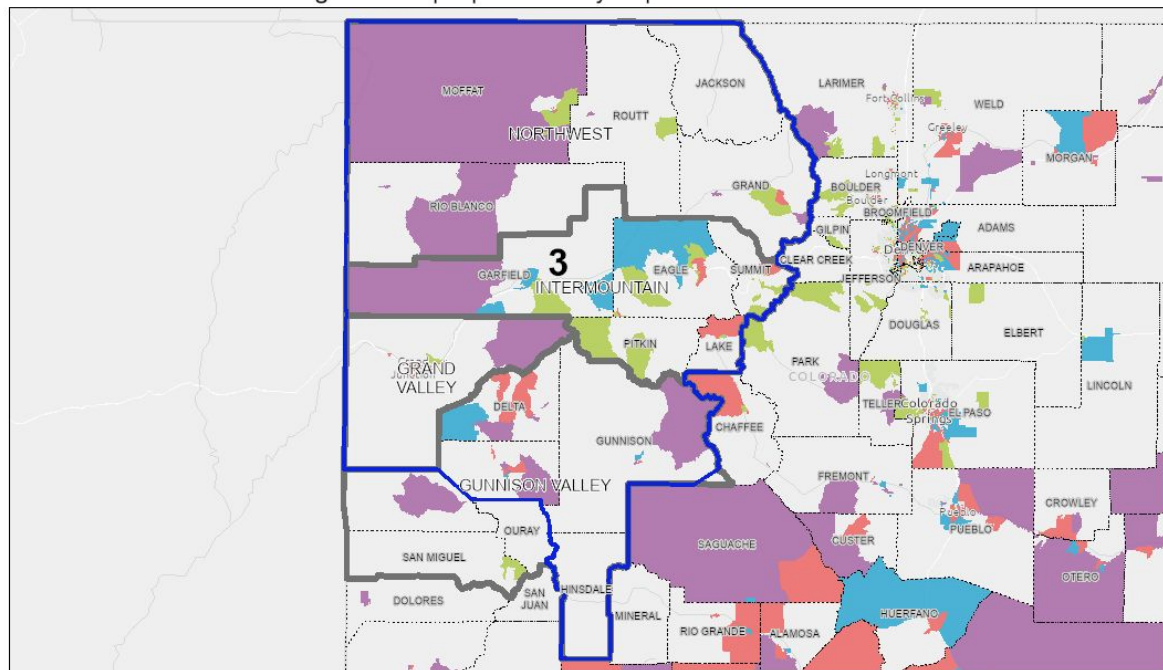
-  County Boundaries
-  Transit Service Areas for Census Designated Places

1:3,374,176  
0 20 40 80 mi  
0 35 70 140 km  
Pike County, Esri, HERE, Garmin, FAO, NOAA, USGS, Bureau of Land Management, EPA, NPS



# Disproportionately Impacted Communities

Region 3 Disproportionately Impacted Communities



8/2/2023, 1:10:51 PM

CDOT Engineering Regions

Transportation Planning Regions (TPR)

County Boundaries

Disproportionately Impacted Communities

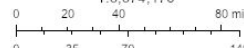
More than one category

People of Color

Housing Burden

Low Income

1:3,374,176

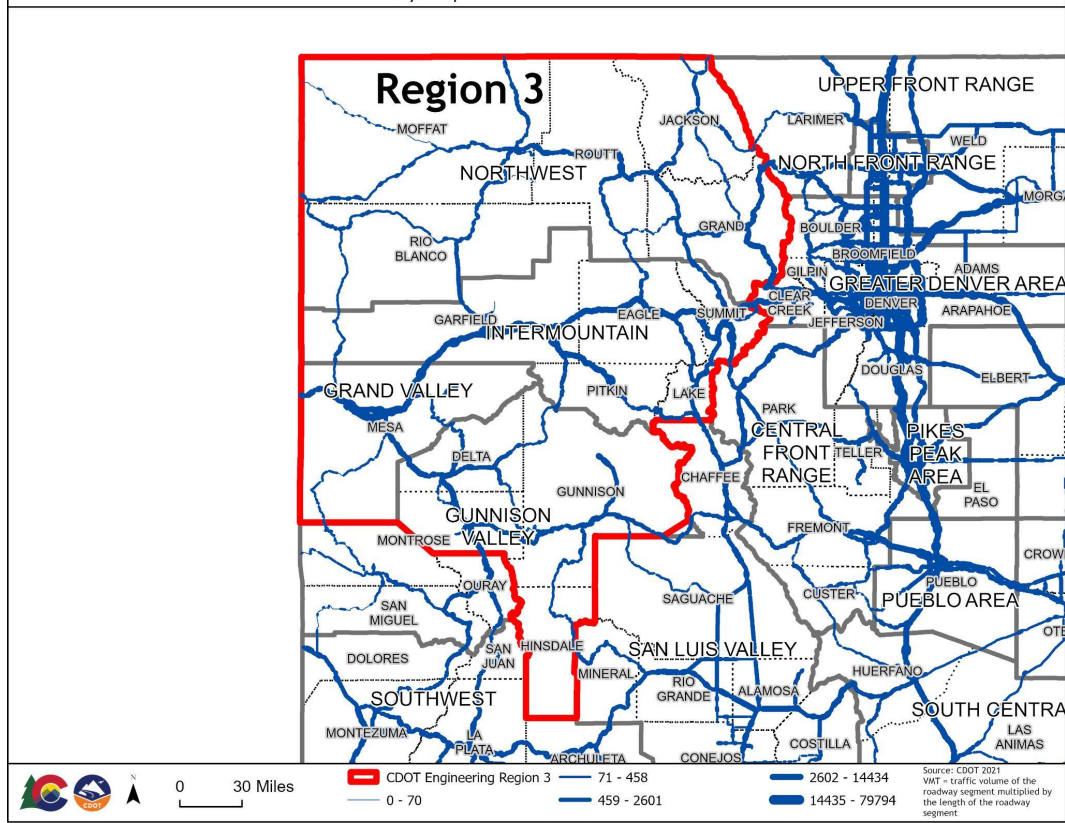


Pitkin County, Esri, HERE, Garmin, FAO, NOAA, USGS, Bureau of Land Management, EPA, NPS





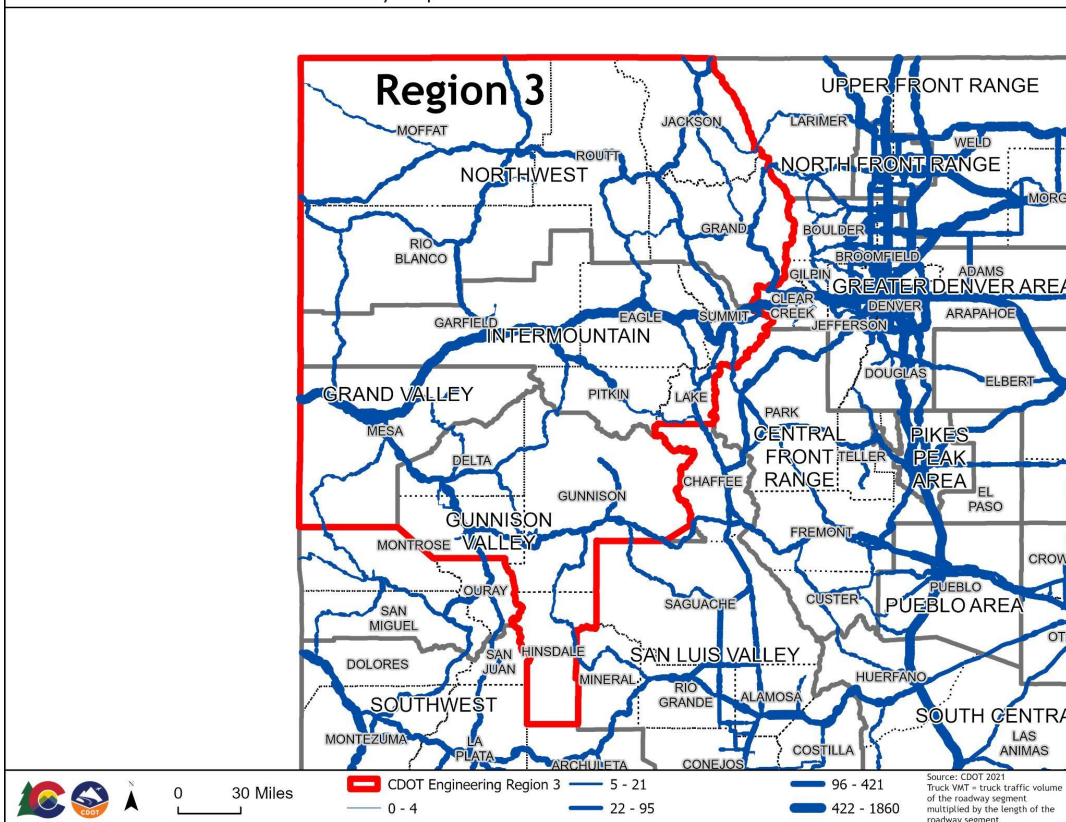
## Statutory Requirement: Vehicle Miles Traveled



# Truck Vehicle Miles Traveled

## TPR Boundary Analysis - Truck Vehicle Miles Traveled Region 3

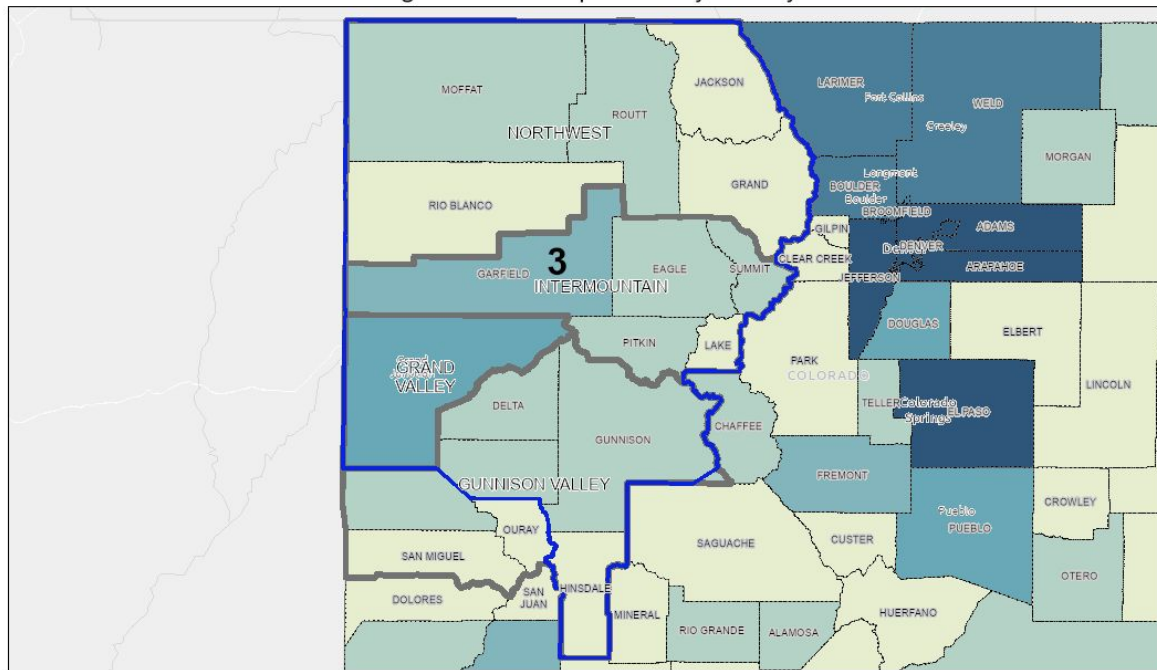
Statutory Requirement: Truck Vehicle Miles Traveled





# 1990 Population by County

Region 3 1990 Population by County



8/2/2023, 1:25:05 PM

CDOT Engineering Regions

Transportation Planning Regions (TPR)

County Boundaries

Census 1990

467 - 10,000

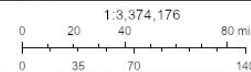
> 10,000 - 25,000

> 25,000 - 60,000

> 60,000 - 130,000

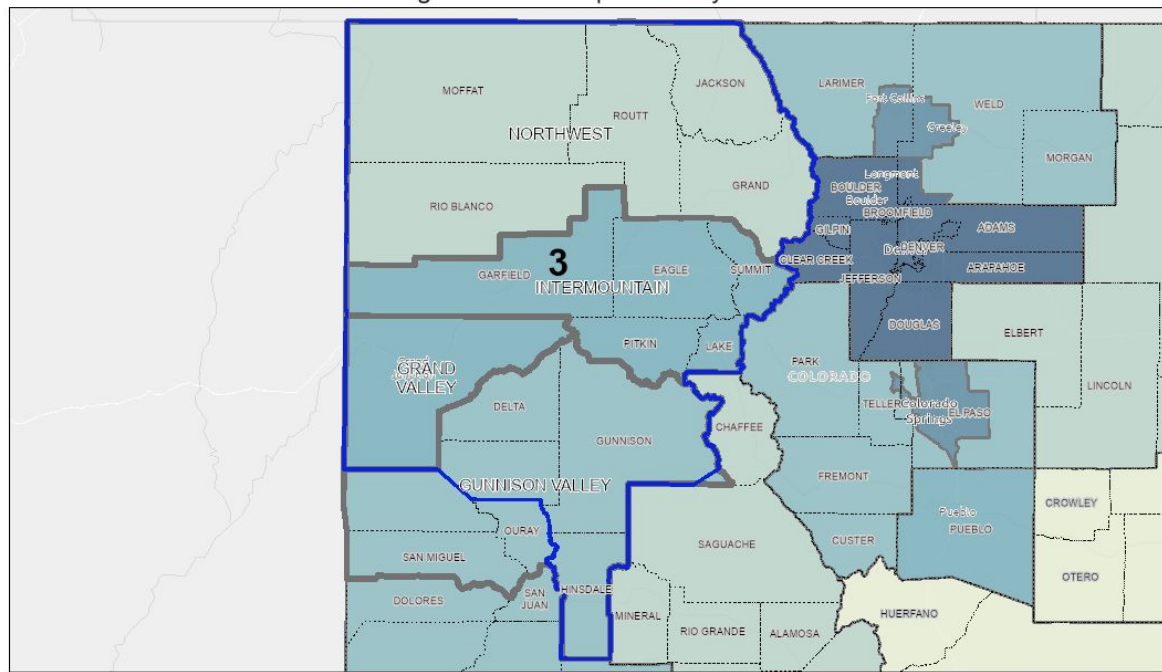
> 130,000 - 265,000

> 265,000 - 467,610



1:3,374,176  
Pitkin County, Esri, HERE, Garmin, FAO, NOAA, USGS, Bureau of Land Management, EPA, NPS

Region 3 2021 Population by TPR



8/2/2023, 1:41:45 PM

CDOT Engineering Regions

Transportation Planning Regions (TPR)

County Boundaries

2021 Population by TPR

21,318 – 47,443

47,443 – 83,788

83,788 – 110,632

> 110,632 – 172,844

> 172,844 – 713,984

> 713,984 – 3,299,015

1:3,374,176

0 20 40 80 mi  
0 35 70 140 km

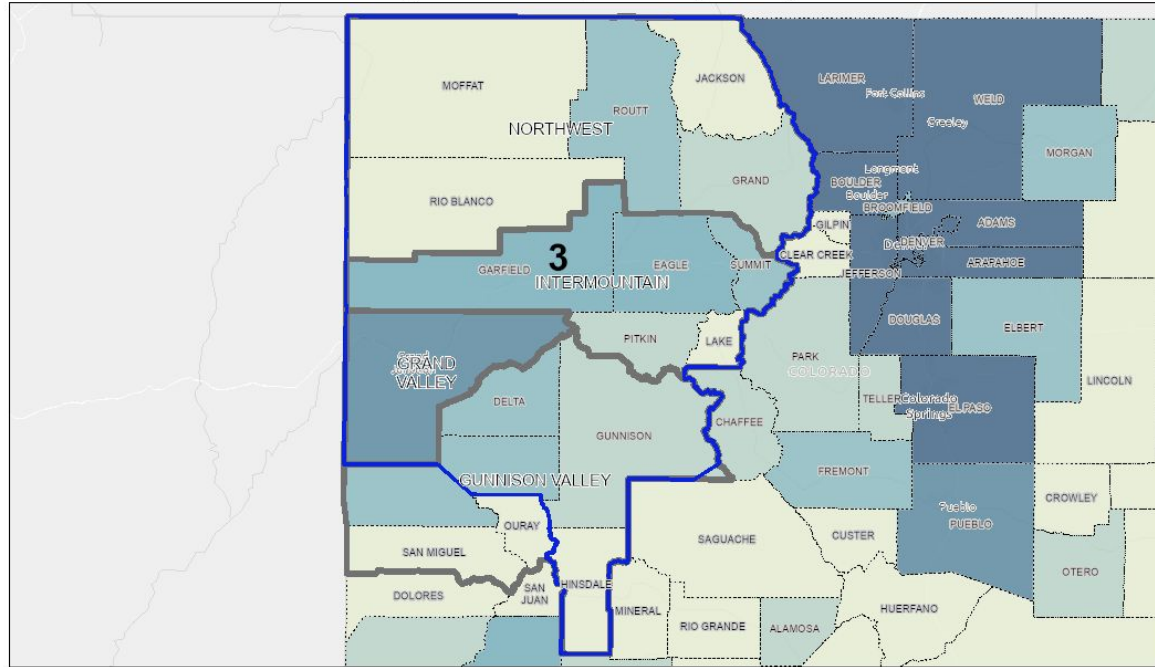
Pike County, Earl, HERE, Garmin, FAO, NOAA, USGS, Bureau of Land Management, EPA, NPS





# 2050 Population by County

Region 3 2050 Population by County



8/2/2023, 1:44:32 PM

CDOT Engineering Regions

Transportation Planning Regions (TPR)

County Boundaries

2050 Population Projections By County

700,021 - 13,000

> 13,000 - 32,000

> 32,000 - 75,000

> 75,000 - 170,000

> 170,000 - 360,000

> 360,000 - 1,004,027

1:3,374,176

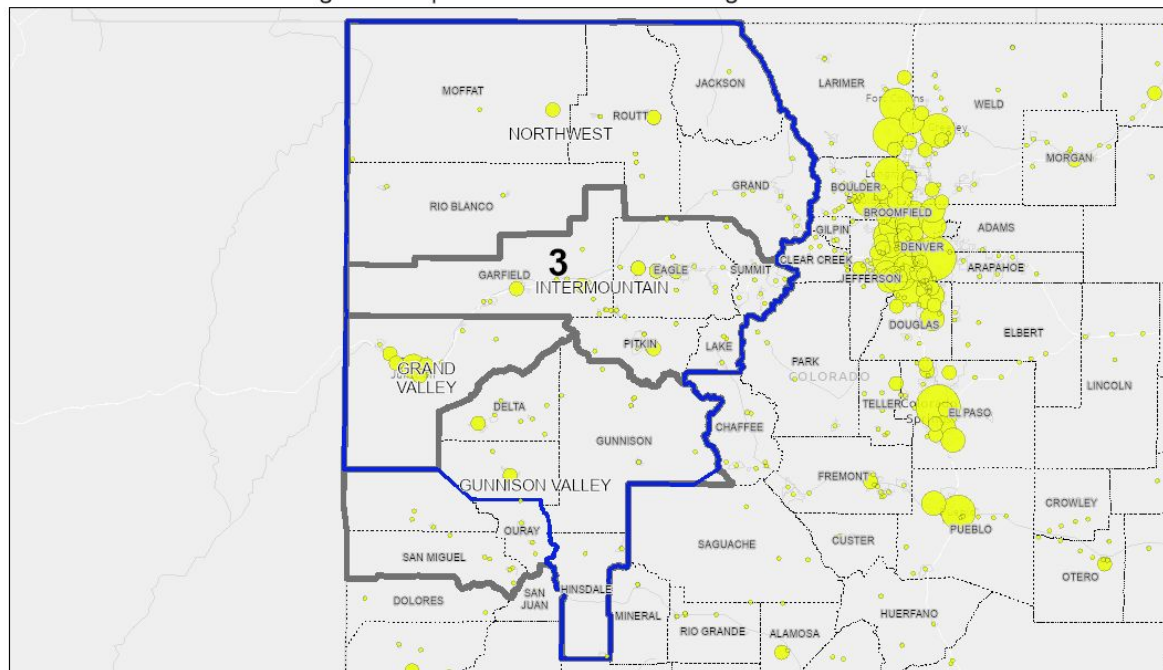
0 20 40 80 mi  
0 35 70 140 km

Pikini County, Esri, HERE, Garmin, FAO, NOAA, USGS, Bureau of Land Management, EPA, NPS



# Populations of Census Designated Areas

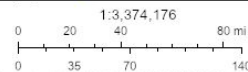
Region 3 Populations of Census Designated Areas



8/2/2023, 1:46:13 PM

- CDOT Engineering Regions
- Transportation Planning Regions (TPR)
- County Boundaries

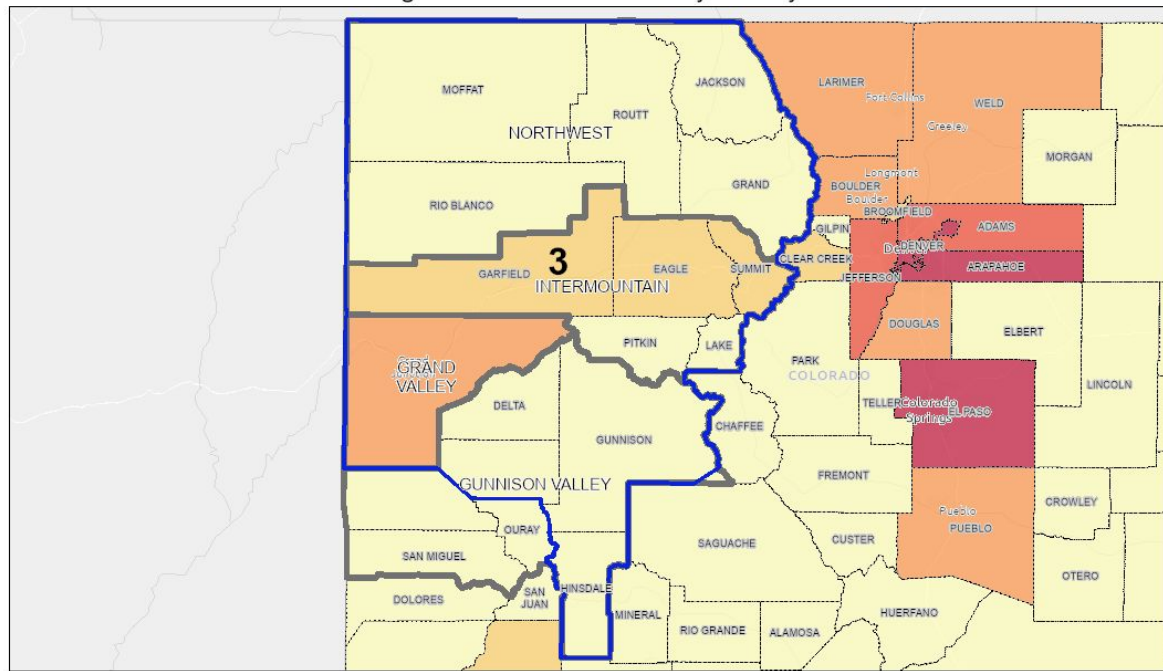
- Census Designated Place Population Estimates
- 0 - 6,500
  - > 6,500 - 25,000
  - > 25,000 - 75,000
  - > 75,000 - 170,000
  - > 170,000 - 706,799



Pitkin County, Esri, HERE, Garmin, FAO, NOAA, USGS, Bureau of Land Management, EPA, NPS

# Vehicle Crashes by County

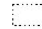
Region 3 Vehicle Crashes by County



8/2/2023, 1:47:34 PM

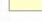
 CDOT Engineering Regions

 Transportation Planning Regions (TPR)

 County Boundaries

Vehicle Crashes by County

 1 - 119

 120 - 307

 308 - 1281

 1282 - 2422

 2423 - 4682

1:3,374,176

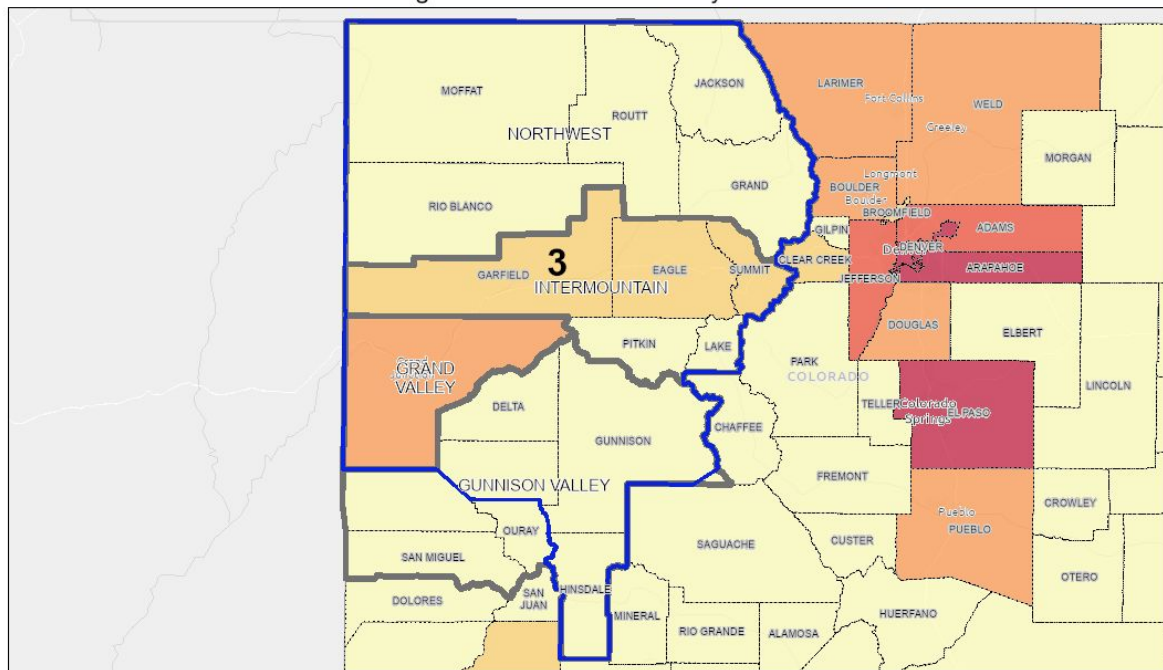
0 20 40 80 mi

0 35 70 140 km

Pitkin County, Esri, HERE, Garmin, FAO, NOAA, USGS, Bureau of Land Management, EPA, NPS

# Vehicle Crashes by TPR

Region 3 Vehicle Crashes by TPR



8/2/2023, 1:48:25 PM

CDOT Engineering Regions

Transportation Planning Regions (TPR)

County Boundaries

Vehicle Crashes by County

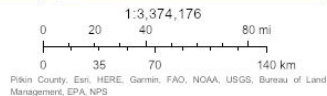
1 - 119

120 - 307

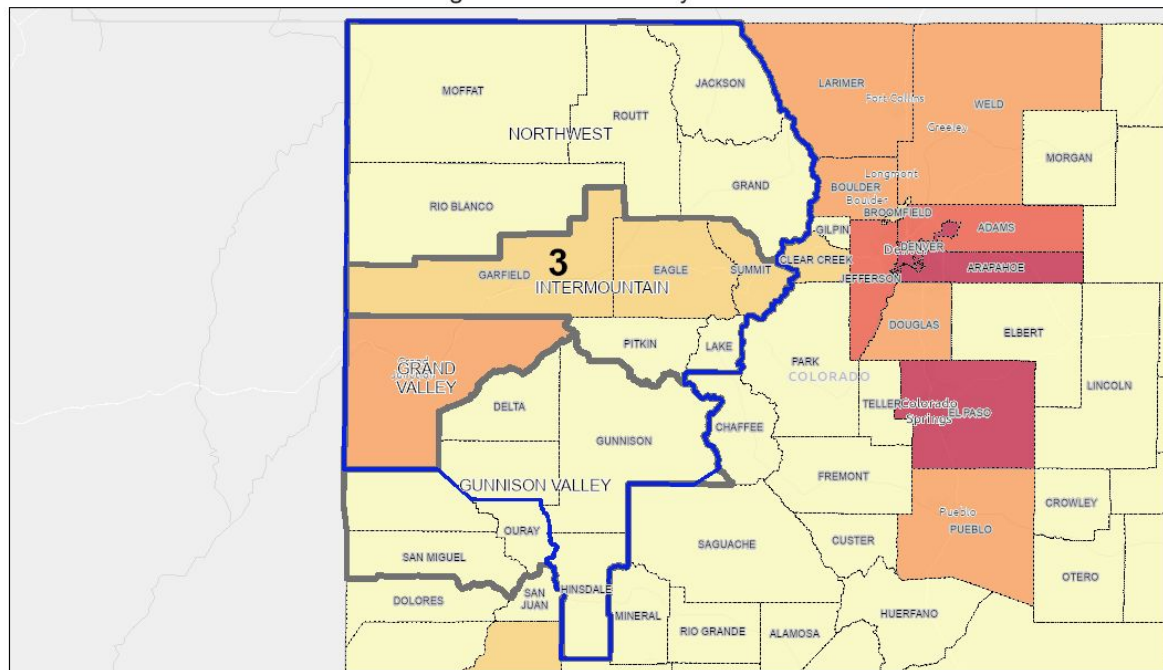
308 - 1281

1282 - 2422

2423 - 4682



Region 3 Lane Miles by TPR



8/2/2023, 1:49:49 PM

CDOT Engineering Regions

Transportation Planning Regions (TPR)

County Boundaries

Vehicle Crashes by County

1 - 119

120 - 307

308 - 1281

1282 - 2422

2423 - 4682

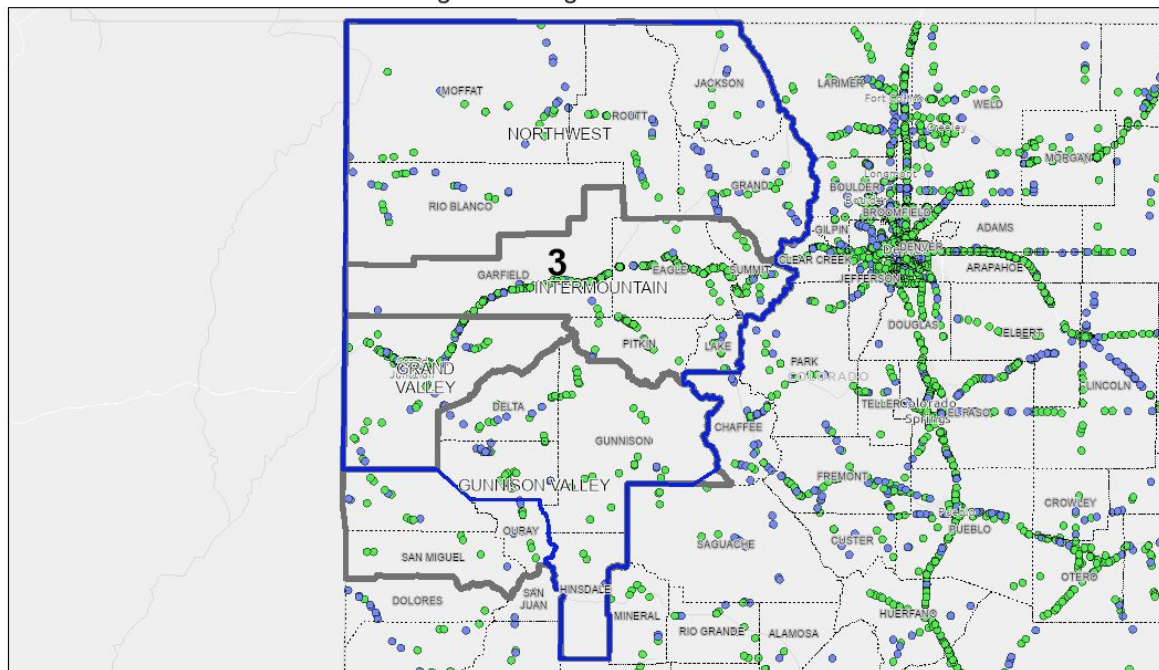
1:3,374,176

0 20 40 80 mi  
0 35 70 140 km


Pitkin County, Esri, HERE, Garmin, FAO, NOAA, USGS, Bureau of Land Management, EPA, NPS



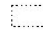
## Region 3 Bridges and Culverts



8/2/2023, 1:54:46 PM

 CDOT Engineering Regions

 Transportation Planning Regions (TPR)

 County Boundaries

Bridges and Major Culverts

 BRIDGE

 CULVERT

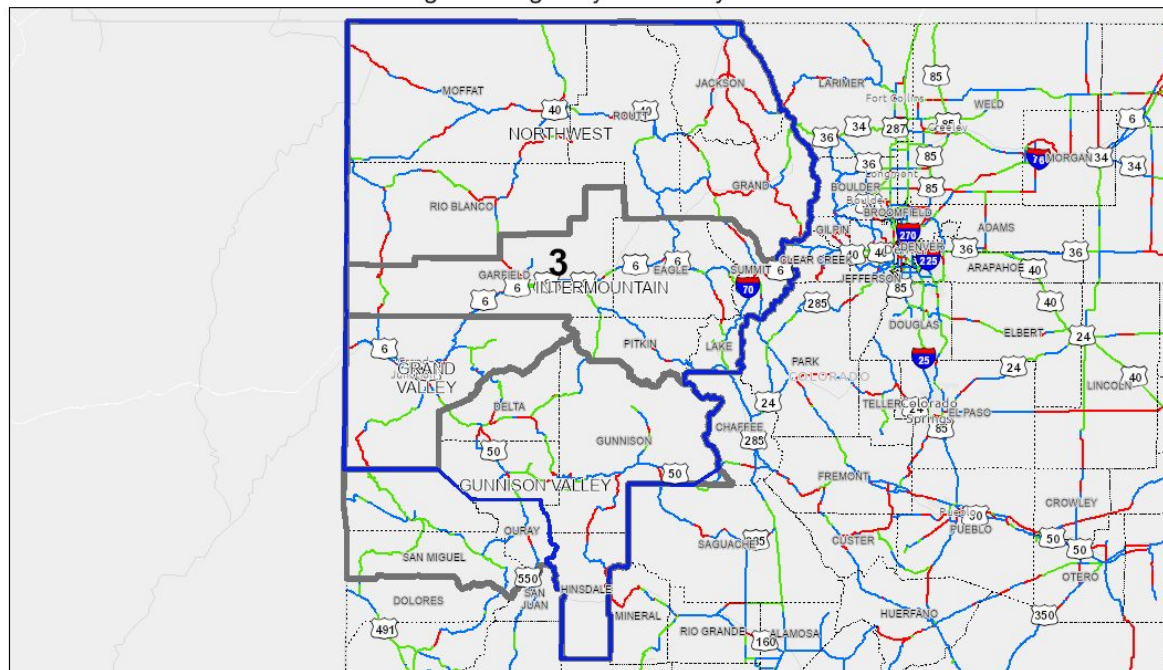
1:3,374,176

0 20 40 80 mi

0 35 70 140 km

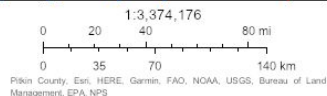
Pike County, Inc. HERE, Garmin, FAO, NOAA, USGS, Bureau of Land Management, EPA, NPS

Region 3 Highway Drivability Life



8/2/2023, 1:56:58 PM

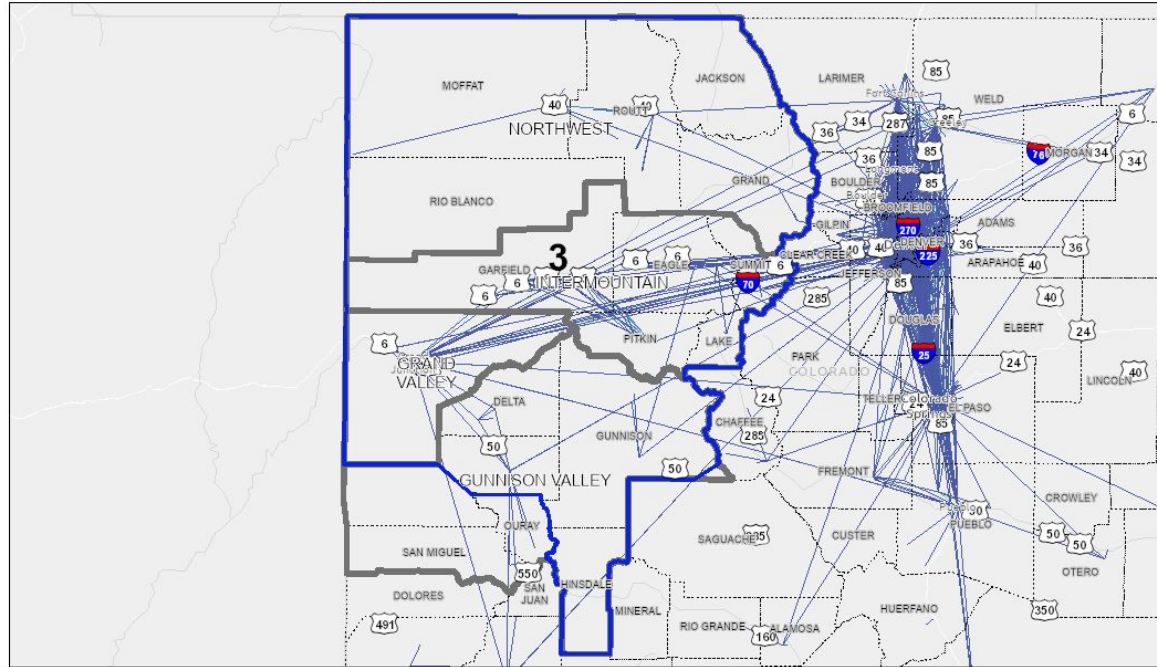
- Highways for Anno
- CDOT Engineering Regions
- Transportation Planning Regions (TPR)
- County Boundaries
- Highways: Drivability Life
- MODERATE
- LOW
- HIGH





# Commuter Origin and Destination

Region 3 Commuter Origin and Destination



8/2/2023, 2:02:32 PM

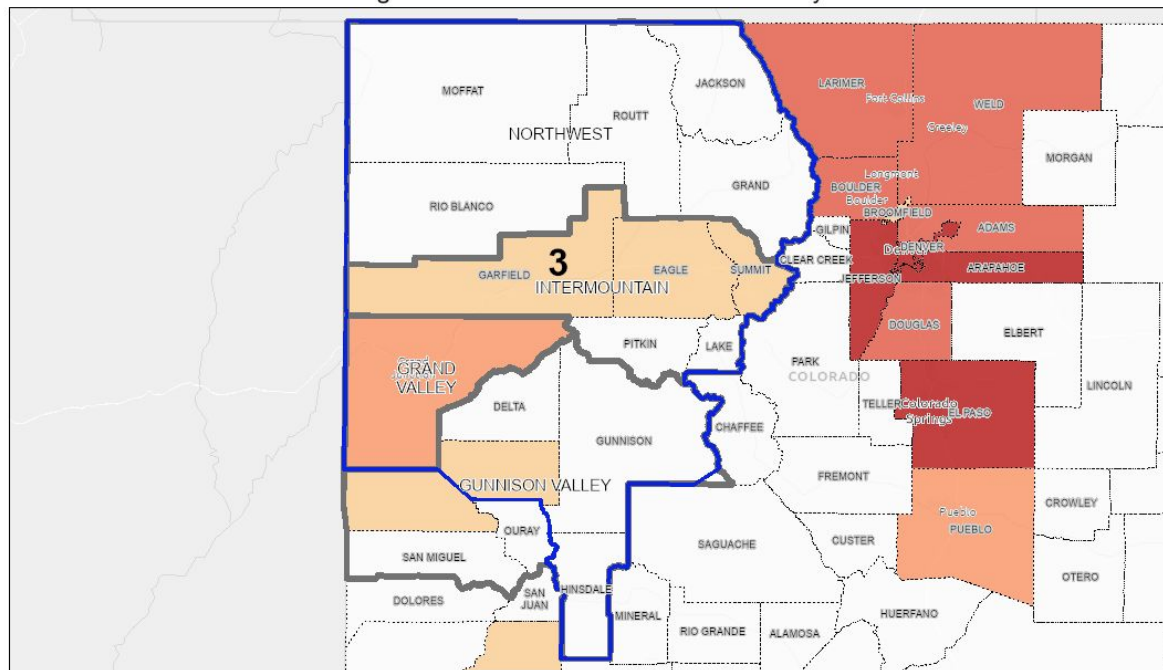
Highways for Anno  
 CDOT Engineering Regions  
 Transportation Planning Regions (TPR)  
 County Boundaries

Commuter Origin and Destination (100+ Commuters)  
 100  
 1,000  
 5,000  
 10,000  
 100,000  
 100

1:3,374,176  
 0 20 40 80 mi  
 0 35 70 140 km  
 Pitkin County, Esri, HERE, Garmin, FAO, NOAA, USGS, Bureau of Land Management, EPA, NPS

# Commuters from Out of County

Region 3 Commuters from Out of County



8/2/2023, 2:04:54 PM

CDOT Engineering Regions

Transportation Planning Regions (TPR)

County Boundaries

County Level Commuters (commuters flowing into the county)

292 – 13,808

> 13,808 – 31,202

> 31,202 – 66,836

1:3,374,176

0 20 40 80 mi

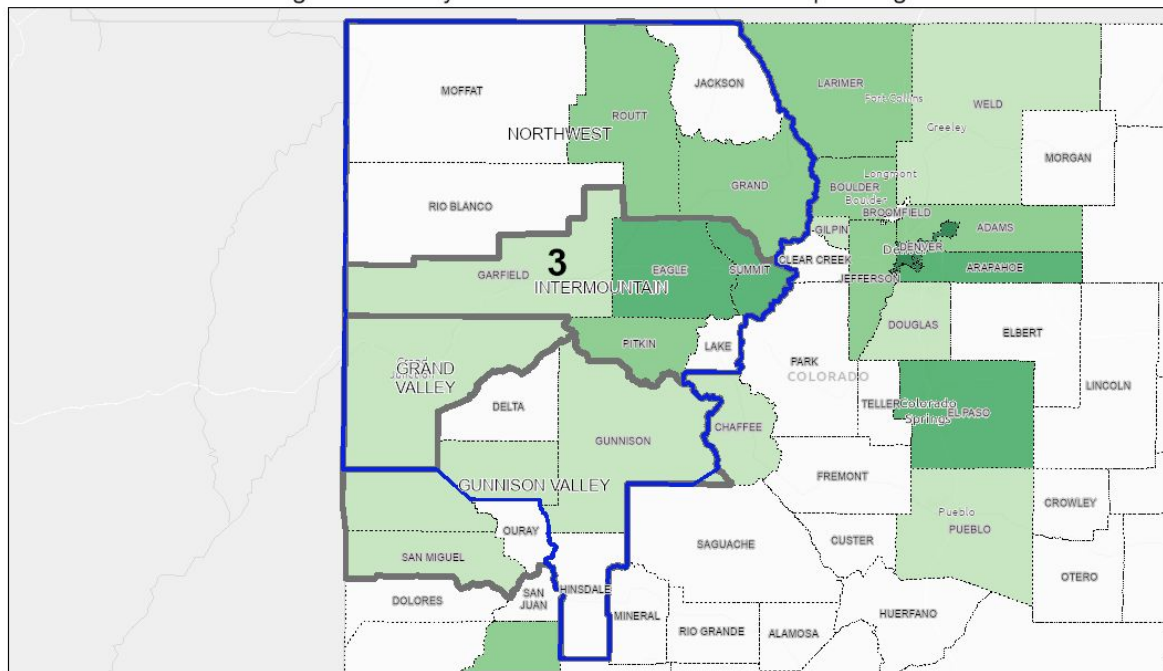
0 35 70 140 km

Pike County, Esri, HERE, Garmin, FAO, NOAA, USGS, Bureau of Land Management, EPA, NPS



# County Level Tourism Direct Travel Spending

Region 3 County Level Tourism Direct Travel Spending



8/2/2023, 2:06:07 PM

CDOT Engineering Regions

Transportation Planning Regions (TPR)

County Boundaries

County Level Tourism Statistics

\$1,400,000 – \$153,800,000

\$153,800,000 – \$373,300,000

\$373,300,000 – \$830,000,000

\$830,000,000 – \$1,800,000,000

\$1,800,000,000 – \$6,399,999,999

1:3,374,176

0 20 40 80 mi  
0 35 70 140 km

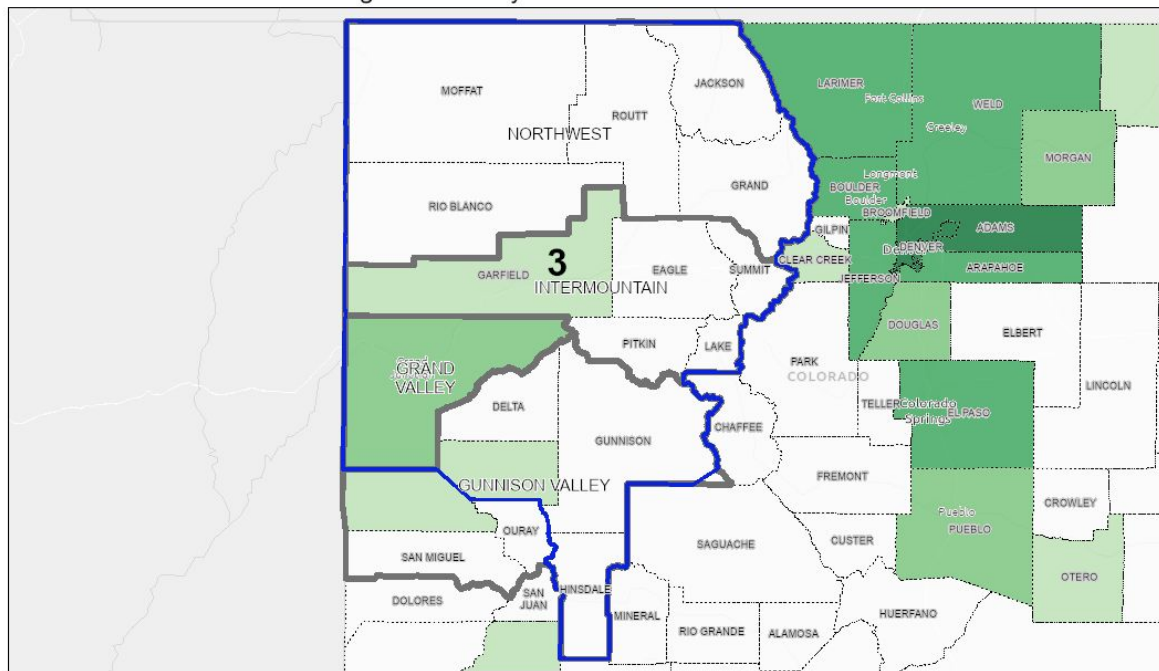
Plain County, Est. HERE, Garmin, FAO, NOAA, USGS, Bureau of Land Management, EPA, NPS





# County Level Movement of Goods

Region 3 County Level Movement of Goods



8/2/2023, 2:07:00 PM

CDOT Engineering Regions

Transportation Planning Regions (TPR)

County Boundaries

County Level Movement of Goods

\$3,538,063.84 - \$712,000,000

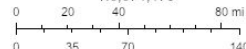
\$712,000,000 - \$2,633,000,000

\$2,633,000,000 - \$10,598,000,000

\$10,598,000,000 - \$25,093,000,000

\$25,093,000,000 - \$67,737,000,000

1:3,374,176

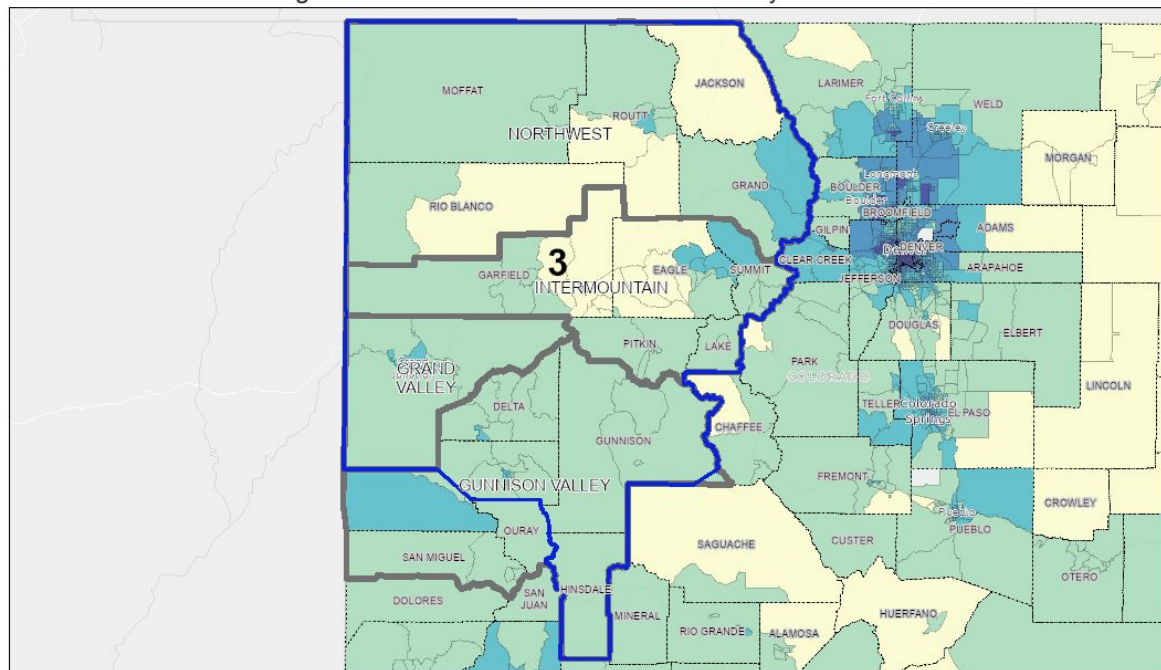


Pike County, Esri, HERE, Garmin, FAO, NOAA, USGS, Bureau of Land Management, EPA, NPS



# Levels of Air Pollutants: Air Quality Measures

Region 3 Levels of Air Pollutants: Air Quality Measures



8/2/2023, 2:09:40 PM

CDOT Engineering Regions

Transportation Planning Regions (TPR)

County Boundaries

EnviroScreen Air Quality Measures

17.18 - 30

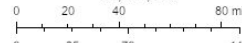
> 30 - 40

> 40 - 50

> 50 - 60

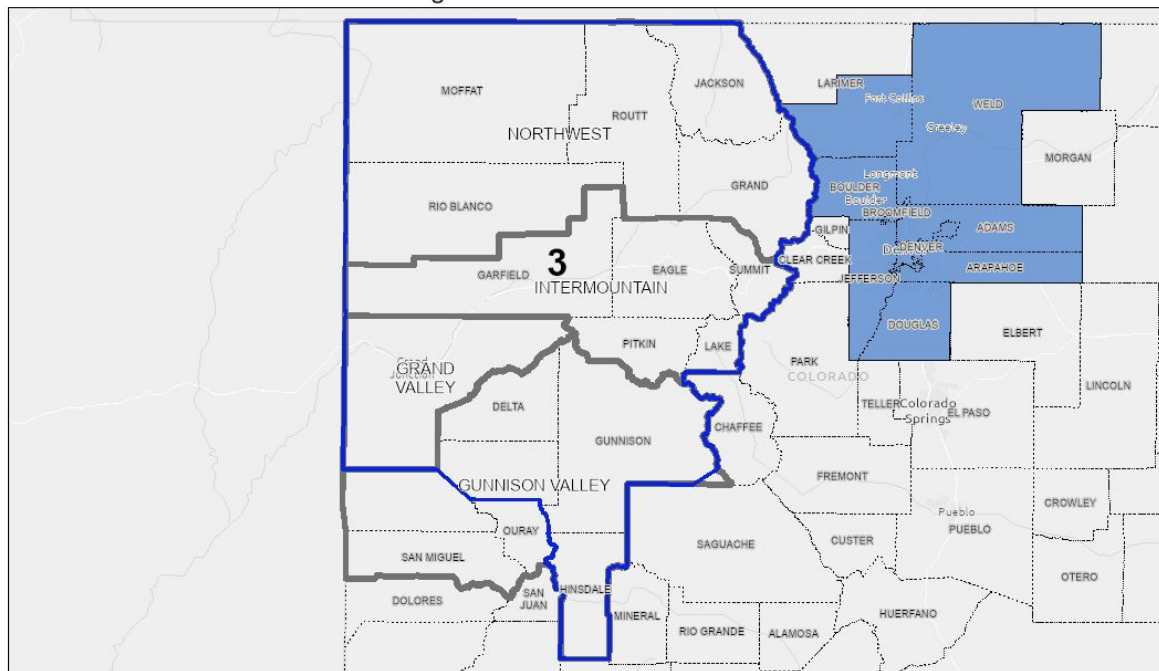
> 60 - 77.22

1:3,374,176



Pitkin County, Est. HERE, Garmin, FAO, NOAA, USGS, Bureau of Land Management, EPA, NPS

## Region 3 Ozone Nonattainment



8/2/2023, 2:10:33 PM

- CDOT Engineering Regions
- County Boundaries
- Transportation Planning Regions (TPR)
- Ozone Nonattainment

