



COLORADO
Department of Transportation

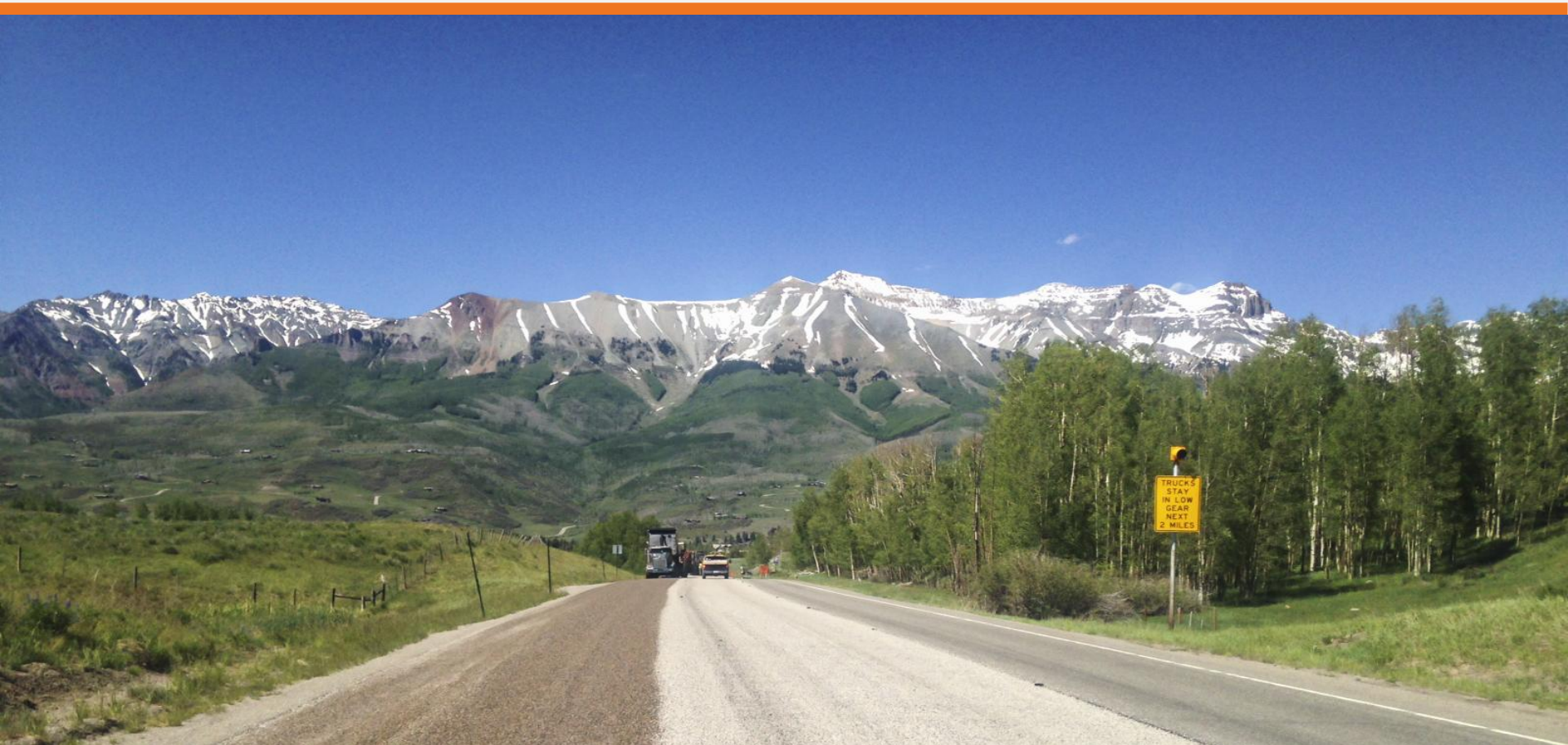
HB23-1101 TPR Study Maps

CDOT Region 5 Public Meeting

July 25, 2023

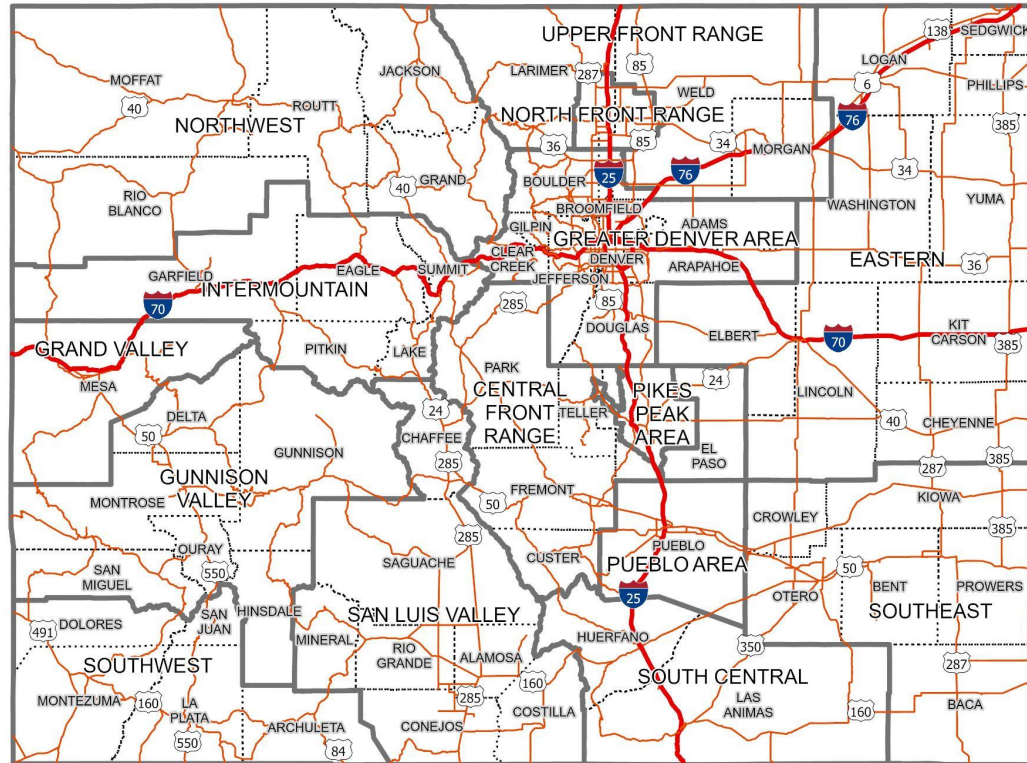


Statewide Maps



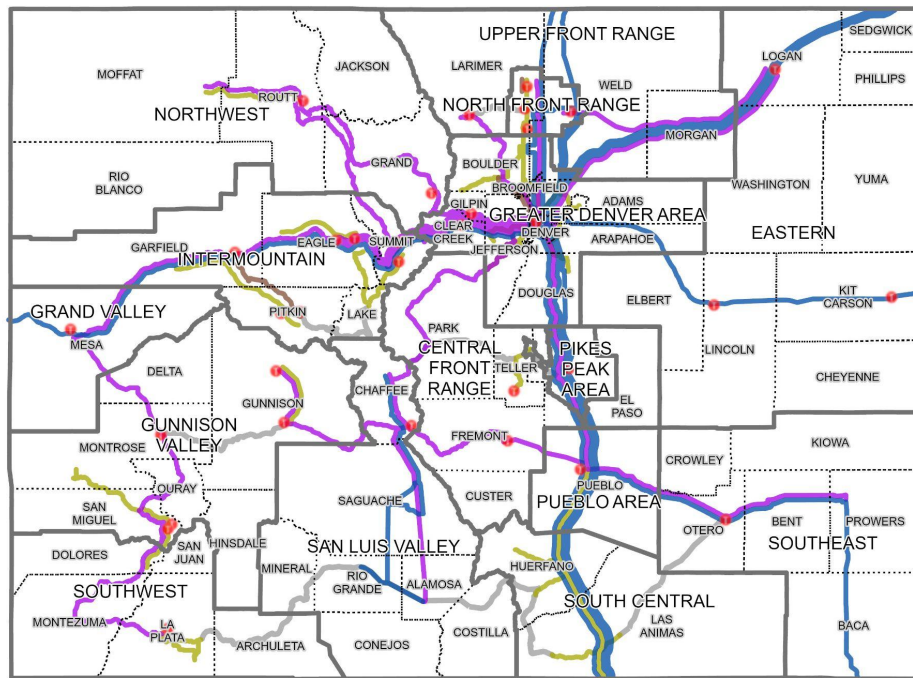


Highway Corridors



TPR Boundary Analysis - Colorado Transit Network

Statutory Requirement: Transit Corridors



0 30 Miles

Local Transit Systems

Intercity Bus Routes

Regional Bus Routes

Bus Rapid Transit

Bustang/Outrider

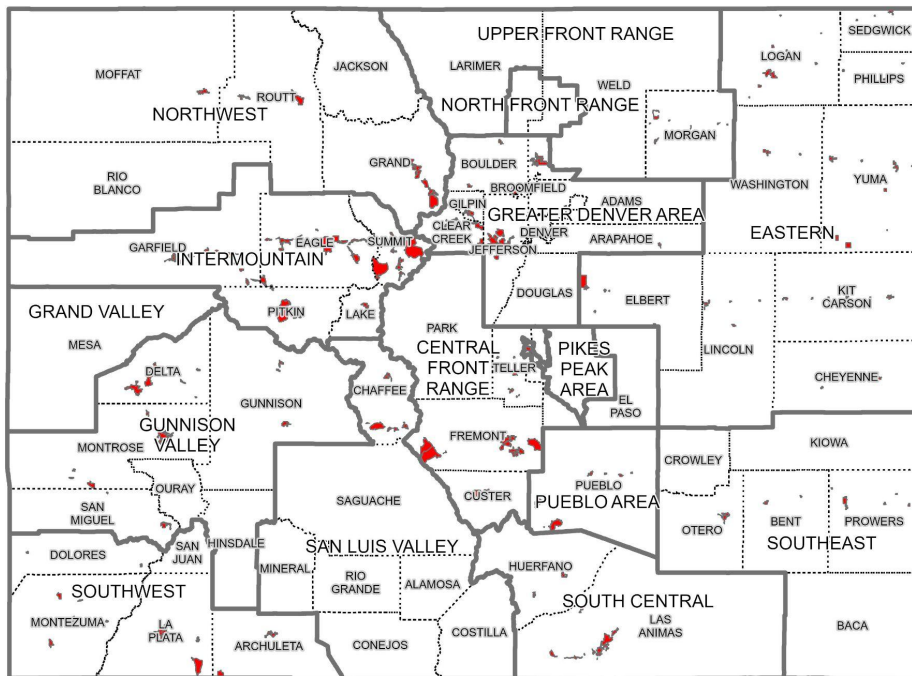
Transit Gaps

Source: CDOT 2021

Transit District Boundaries

TPR Boundary Analysis - Transit Service Areas for Census Designated Places

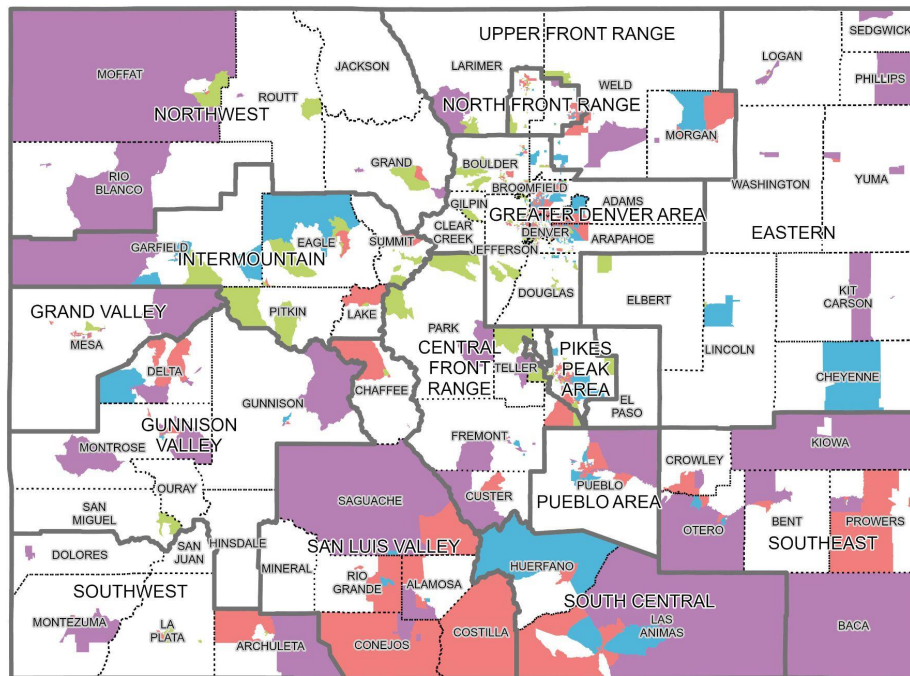
Statutory Requirement: Transit District Boundaries



Disproportionately Impacted Communities

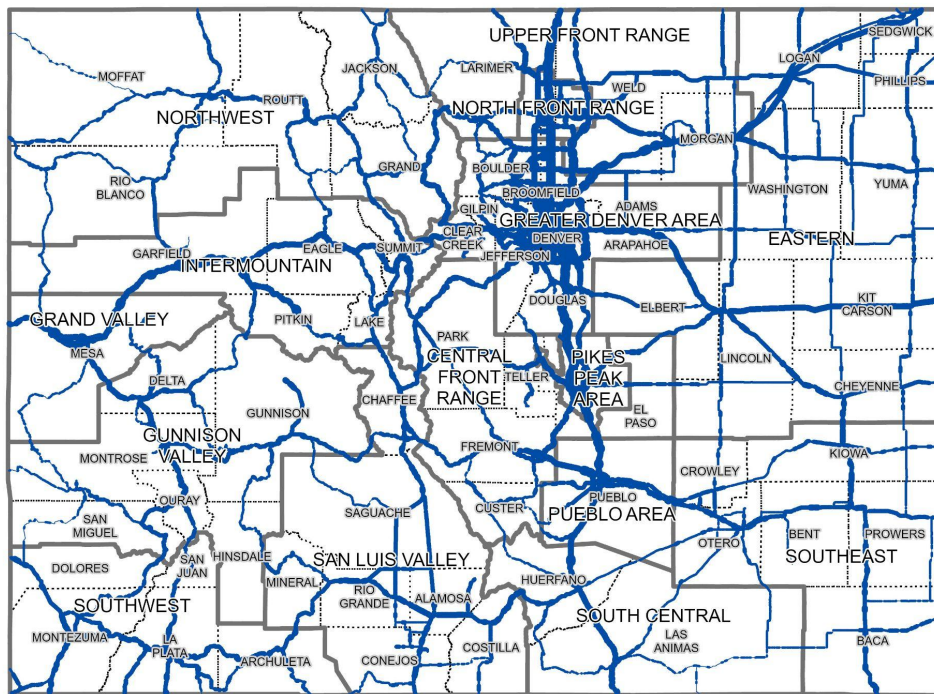
TPR Boundary Analysis - Disproportionately Impacted Communities

Statutory Requirement: Disproportionately Impacted Communities



TPR Boundary Analysis - Vehicle Miles Traveled

Statutory Requirement: Vehicle Miles Traveled



0 30 Miles

0 - 70 71 - 458 459 - 2601 2602 - 14434 14435 - 79794

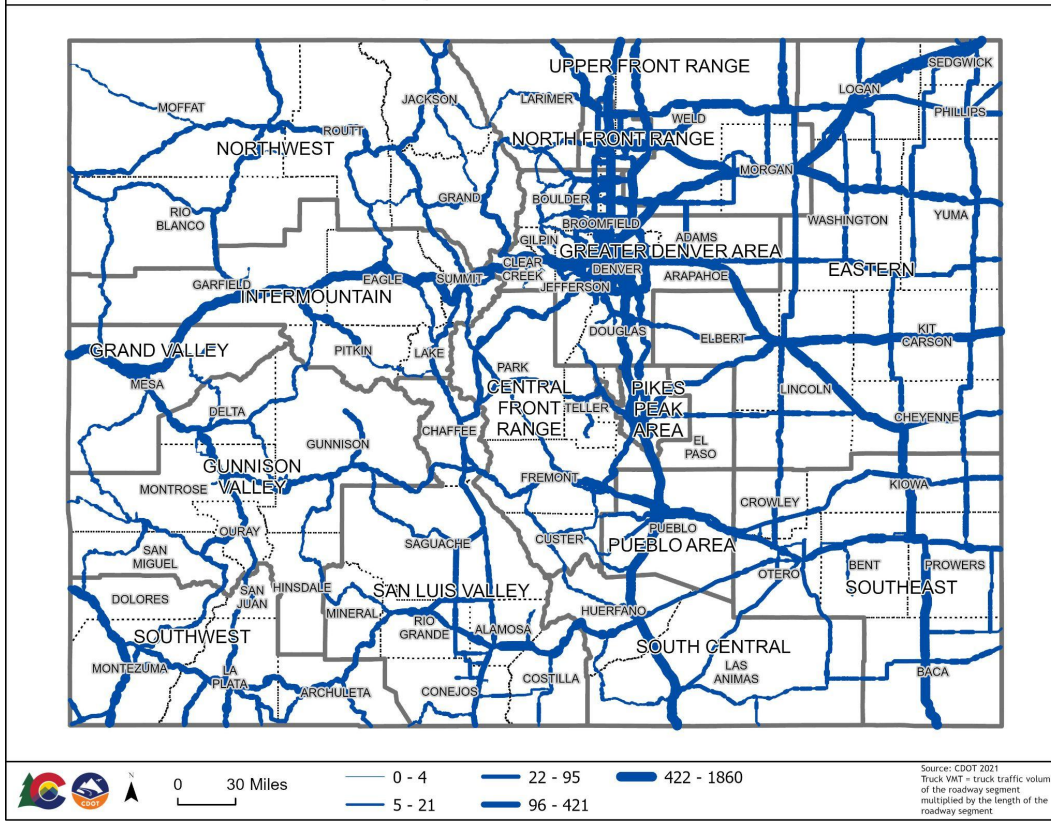
Source: CDOT 2021
VMT = traffic volume of the roadway segment multiplied by the length of the roadway segment



Truck Vehicle Miles Traveled

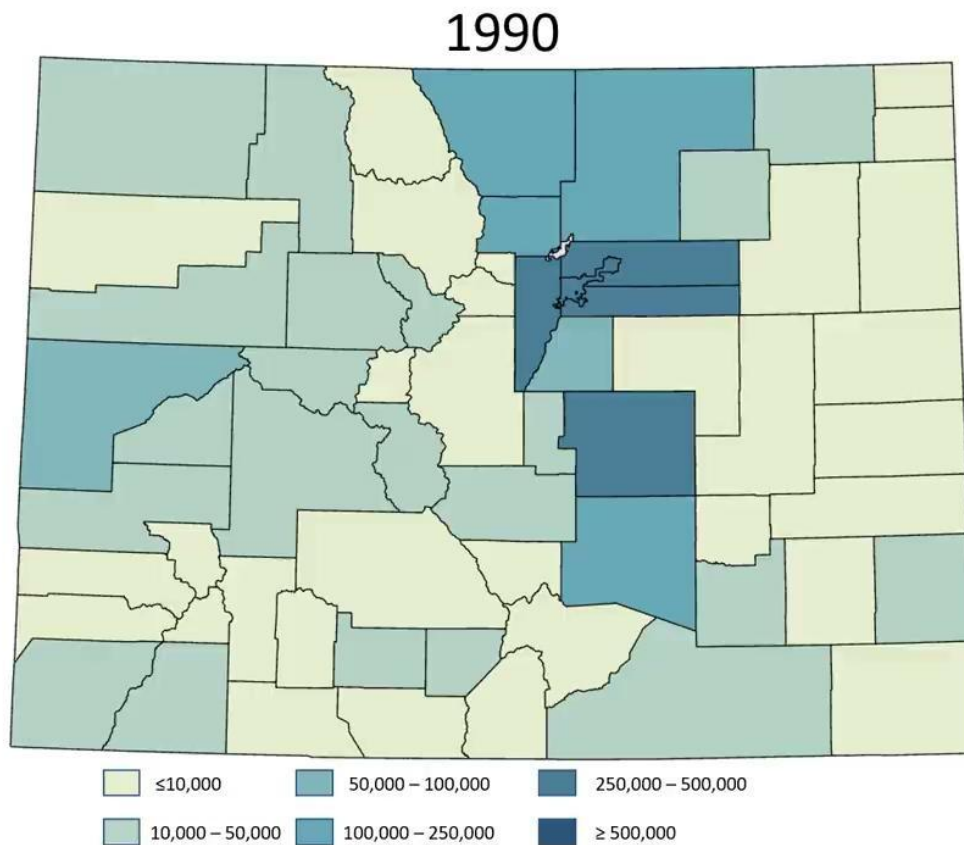
TPR Boundary Analysis - Truck Vehicle Miles Traveled

Statutory Requirement: Truck Vehicle Miles Traveled





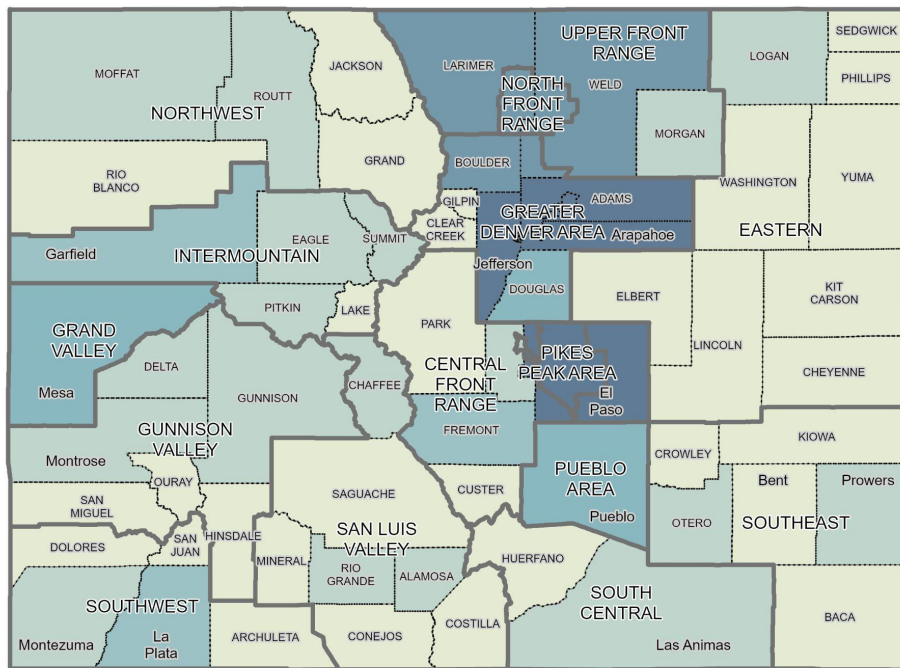
Visualization of Population Change by County



1990 Population by County

TPR Boundary Analysis - 1990 Population by County

Statutory Requirement: Population Trends



*Broomfield City/County did not exist in 1990



0 30 Miles

<10,000

10,001 - 25,000

25,001 - 60,000

60,001 - 130,000

130,001 - 265,000

265,001 - 467,610

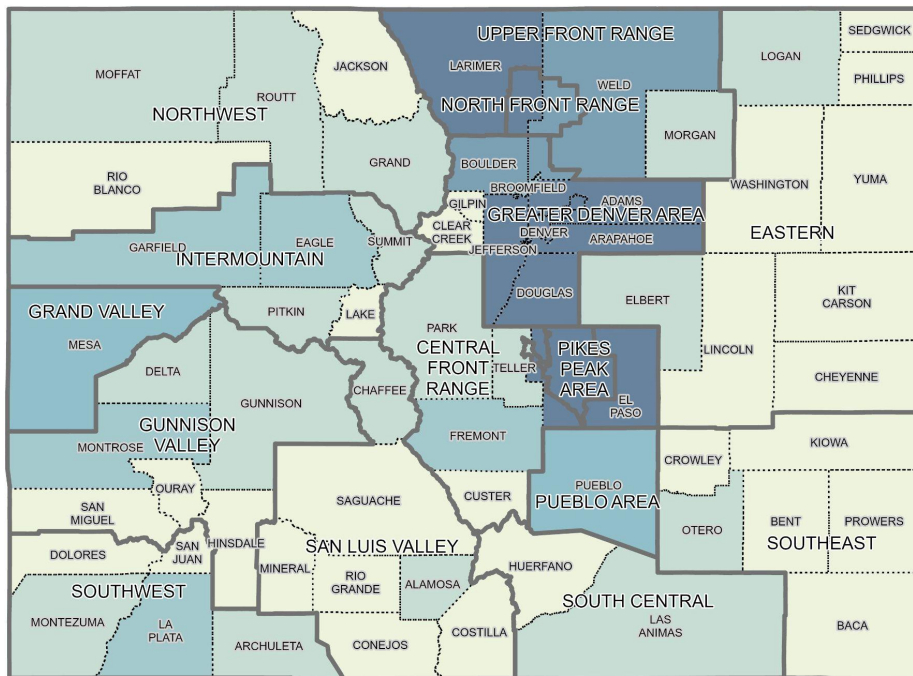
Source: US Census
1990



2021 Population by County

TPR Boundary Analysis - 2021 Population by County

Statutory Requirement: Population Trends



0 30 Miles

0-13000 13000-32000 32000-75000 75000-170000 170000-360000 >360000

Source: US Census 2021



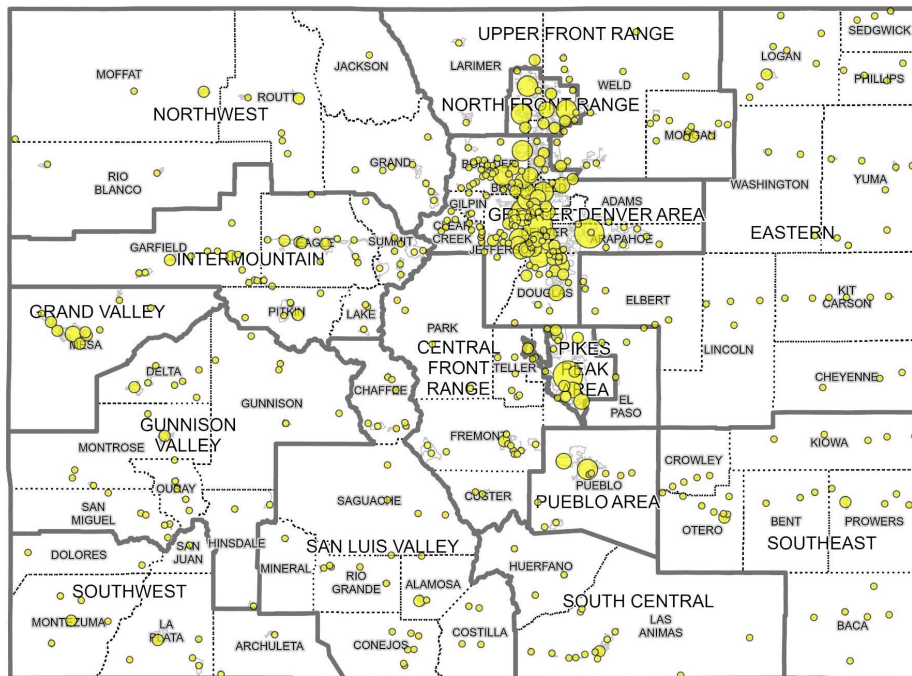
Statutory Requirement: Population Trends



Populations of Census Designated Places

TPR Boundary Analysis - Population of Census Designated Places

Statutory Requirement: Population Trends



0 30 Miles

0 - 6500

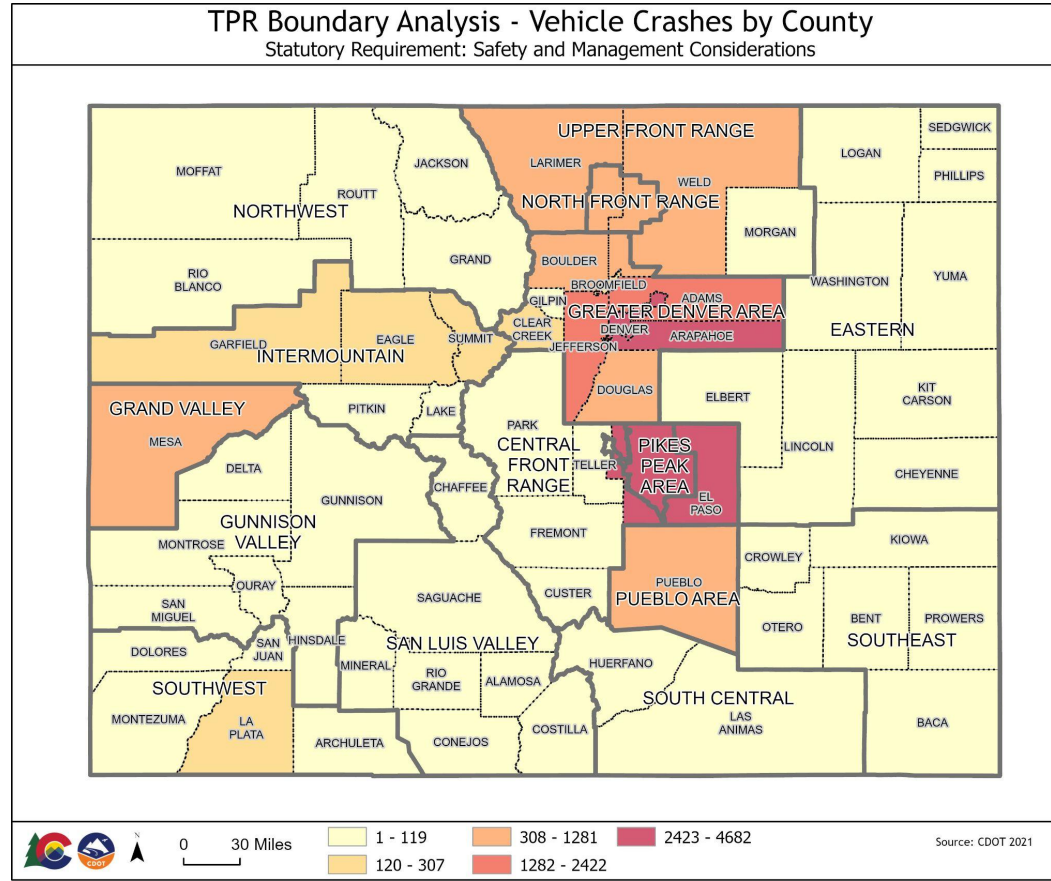
6501 - 25000

25001 - 75000

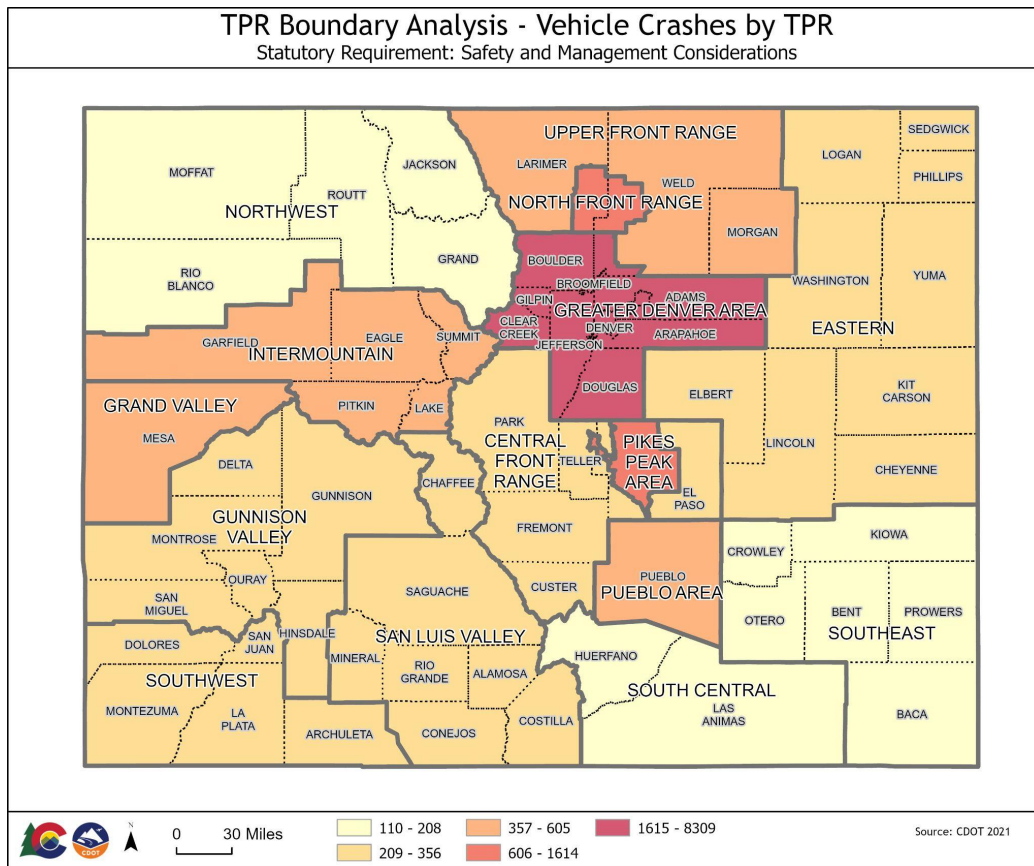
75001 - 170000

>170000

Source: US Census 2021

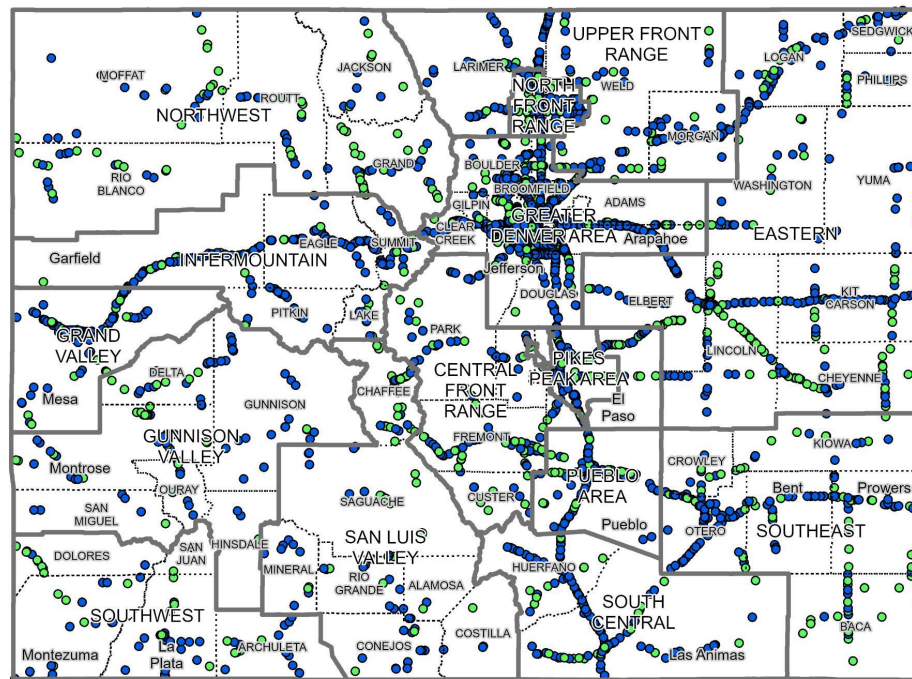


Vehicle Crashes by TPR



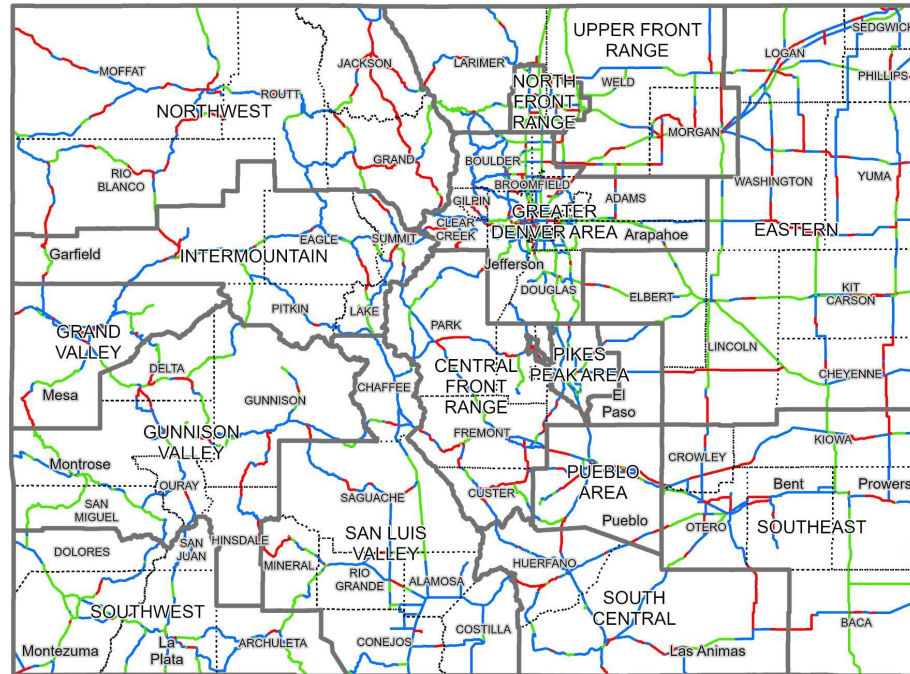
TPR Boundary Analysis - Bridges and Major Culverts

Statutory Requirement: Safety and Management Considerations



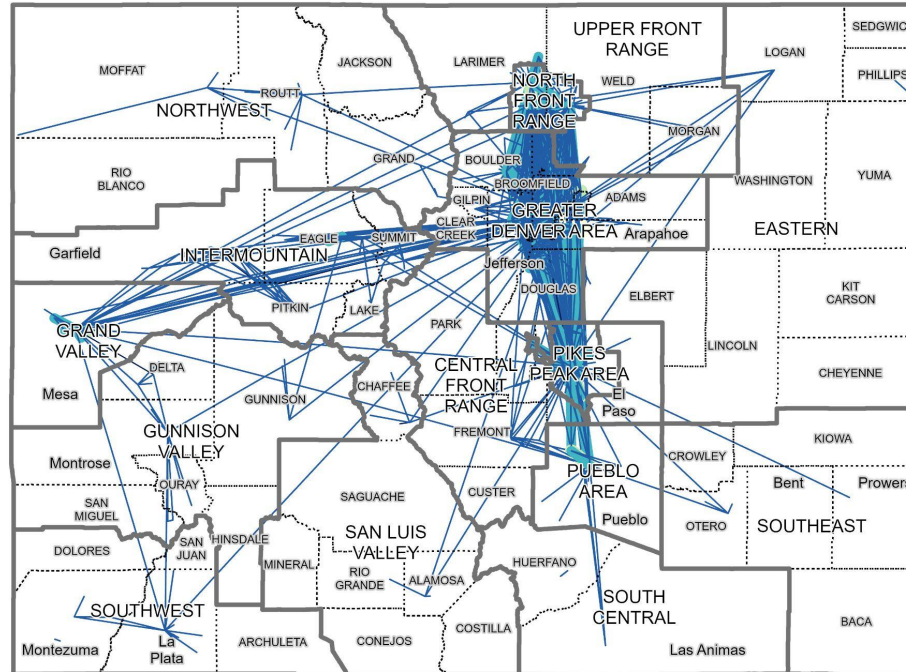
TPR Boundary Analysis - Highways: Drivability Life

Statutory Requirement: Safety and Management Considerations

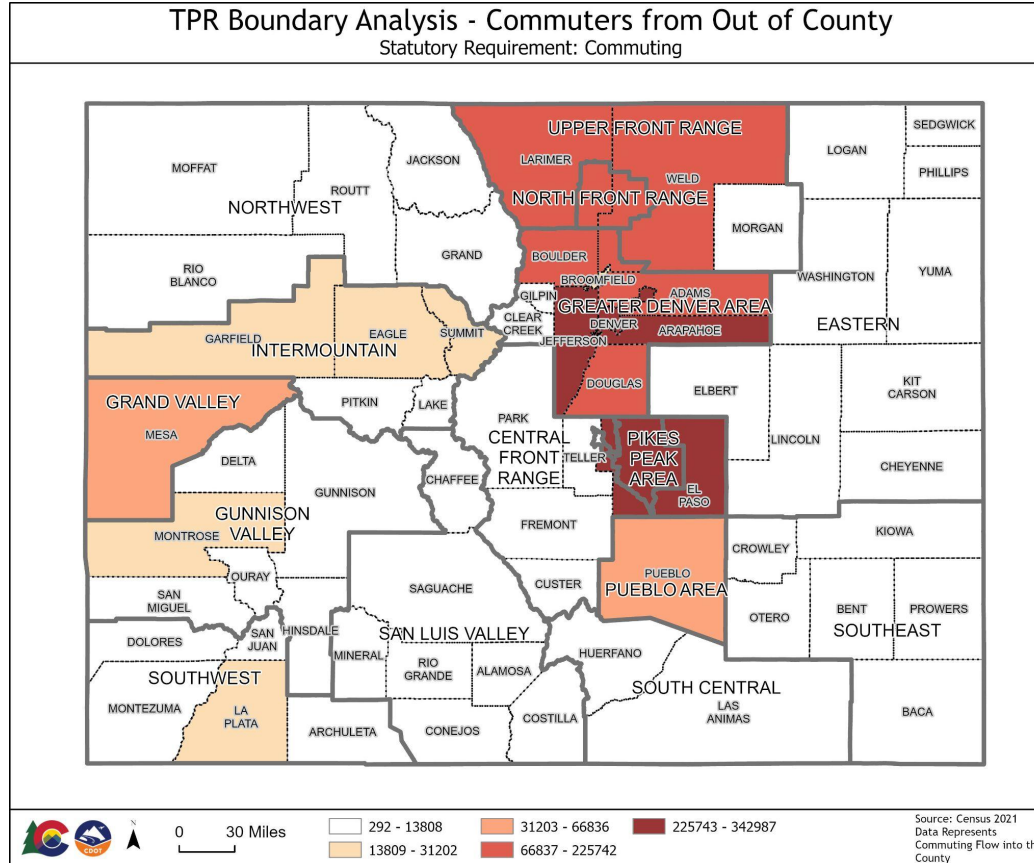


Commuter Origin and Destination

TPR Boundary Analysis - Commuter Origin and Destination (100+ Commuters)
Statutory Requirement: Commuting

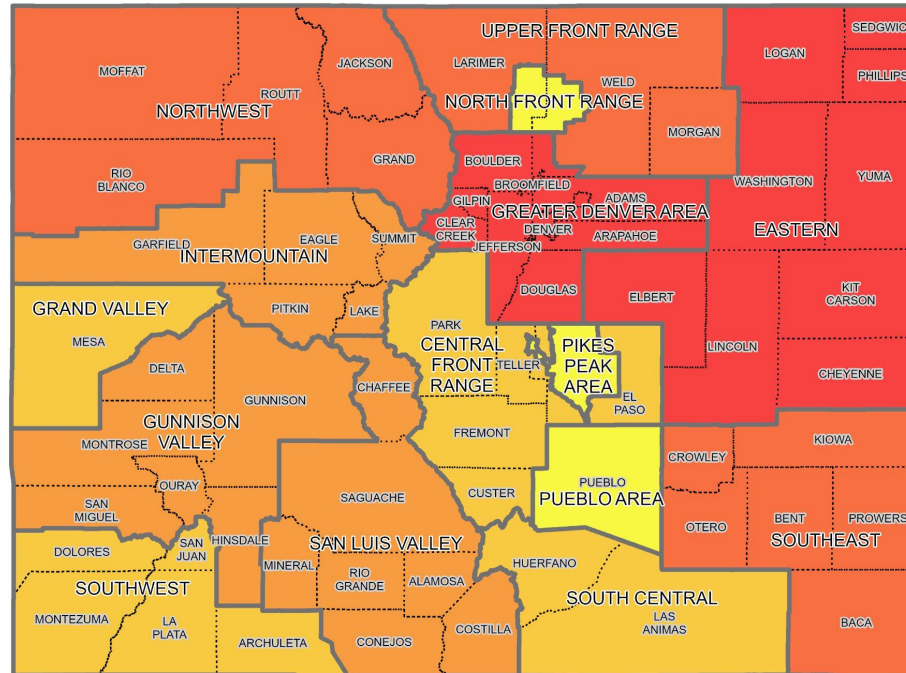


Commuters from Out of County



TPR Boundary Analysis - Lane Miles by TPR

Statutory Requirement: Lane Miles

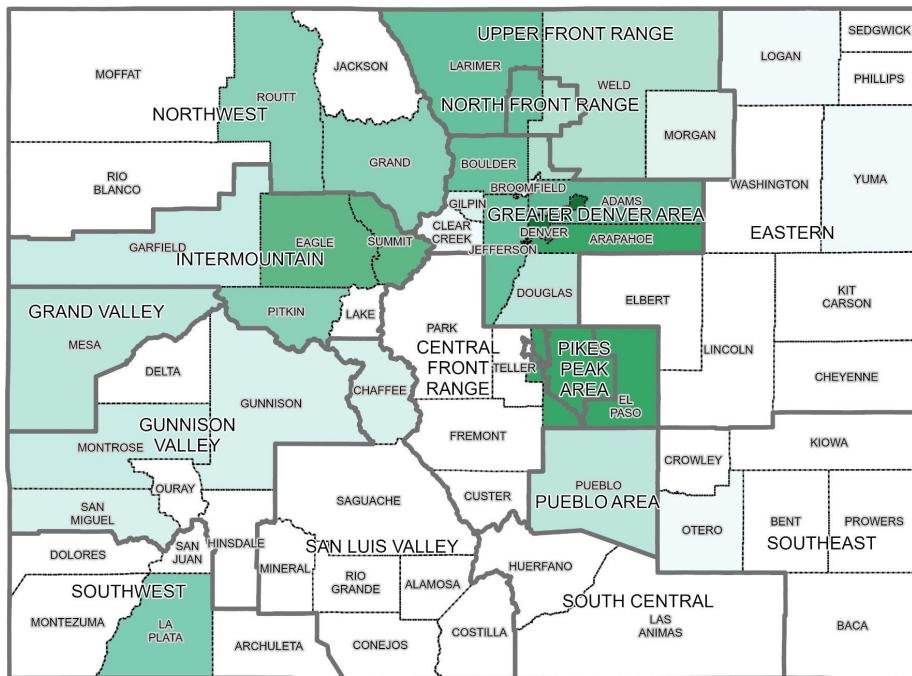




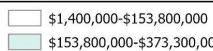
County Level Tourism Direct Travel Spending

TPR Boundary Analysis - County Level Tourism Statistics (Direct Travel Spending)

Statutory Requirement: Tourism Impacts



0 10 Miles

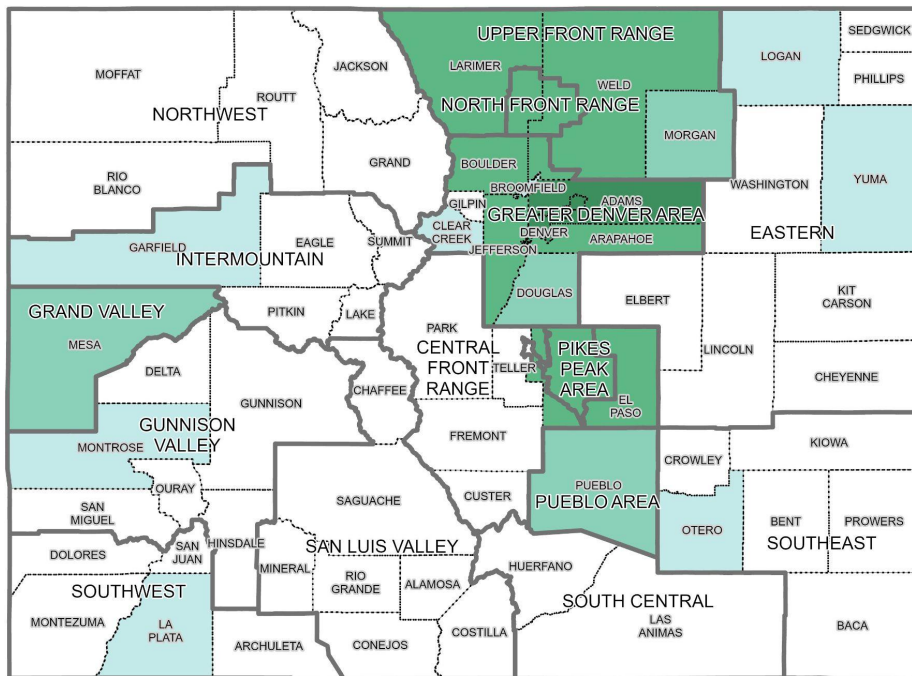


Source: COEDIT 2022

County Level Movement of Goods

TPR Boundary Analysis - County Level Movement of Goods

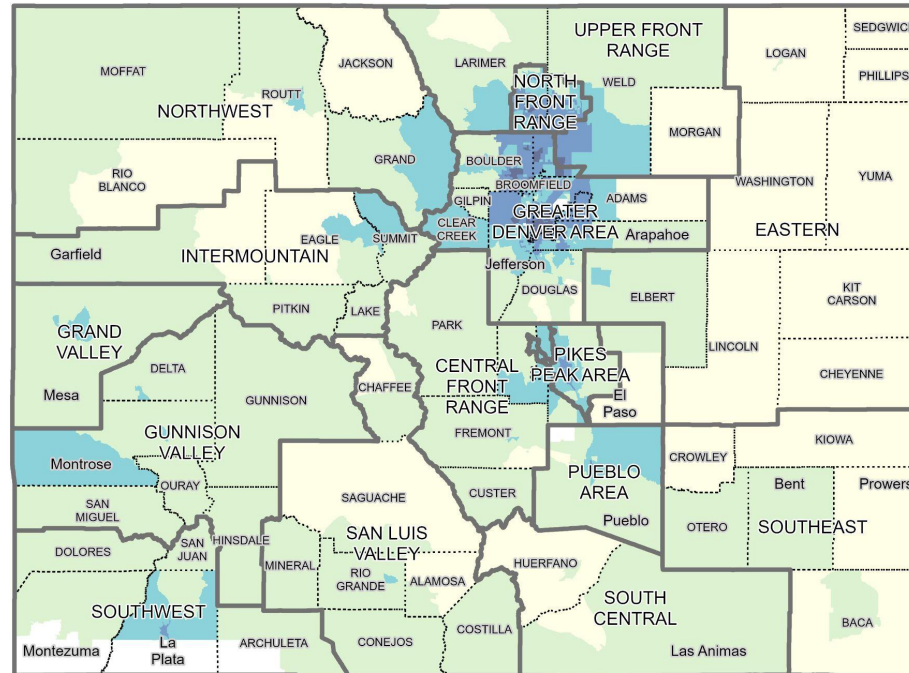
Statutory Requirement: Freight Movement





Levels of Air Pollutants: Air Quality Measures

TPR Boundary Analysis - EnviroScreen Air Quality Measures
Statutory Requirement: Levels of Air Pollutants



0 30 Miles

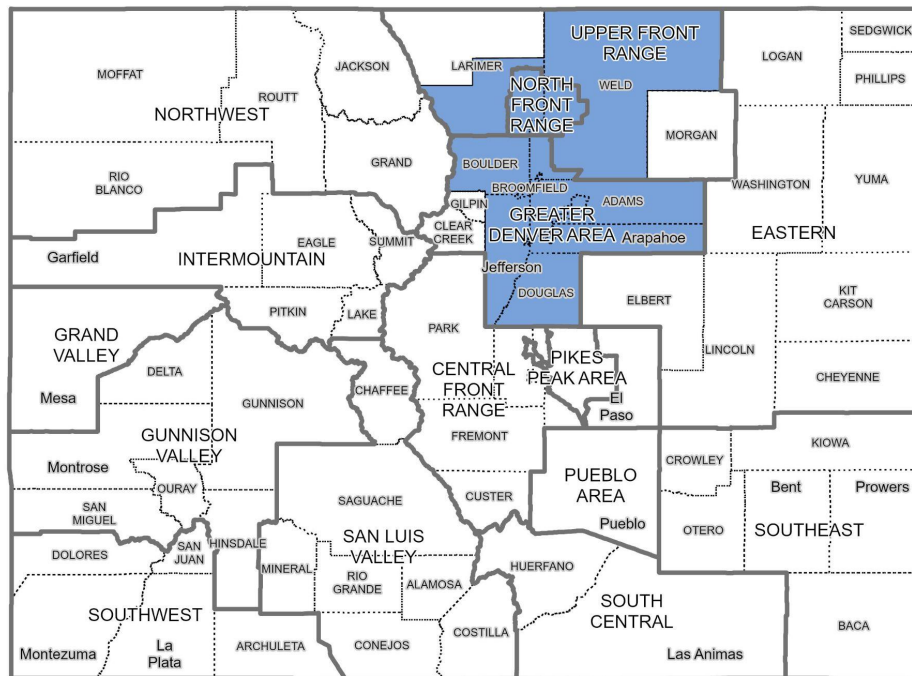
17.18 - 30 30 - 40 40 - 50 50 - 60 60 - 77.22

Data reflects the
Pollution and Climate
Burden Score

Source: CDPHE 2022

TPR Boundary Analysis - Ozone Nonattainment

Statutory Requirement: Levels of Air Pollutants



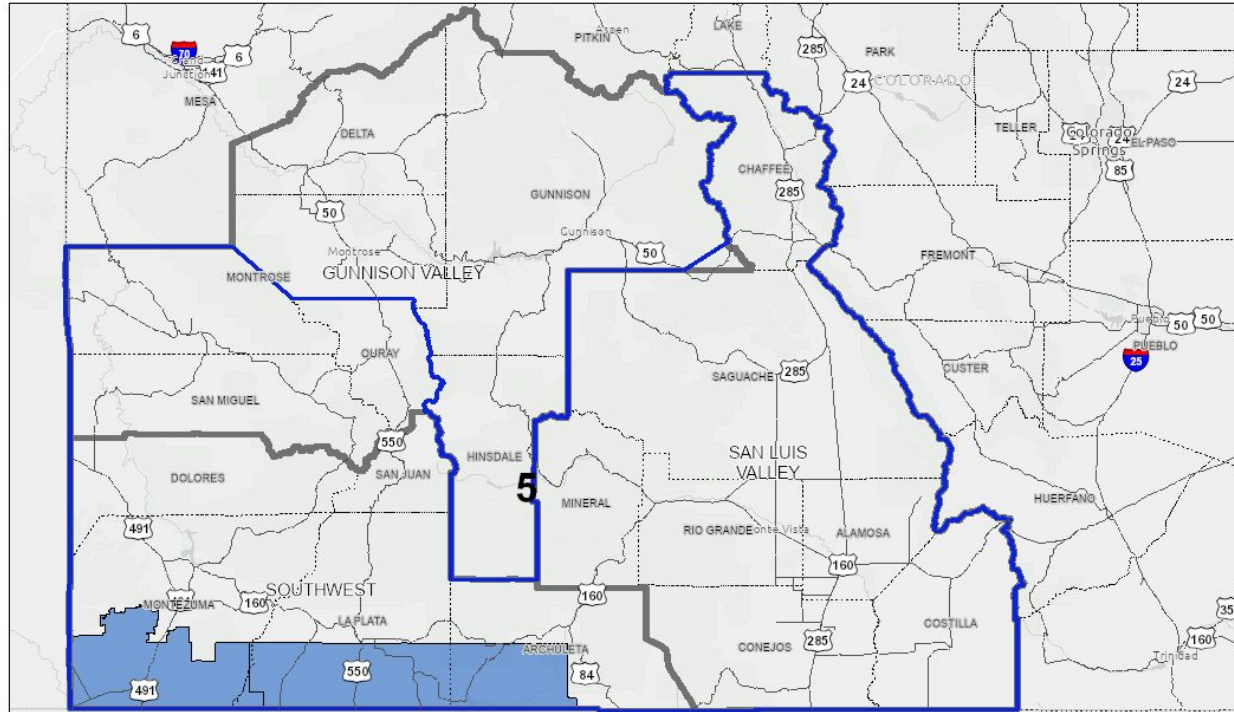


TPR Level Regional Maps





Highway Corridors



7/24/2023, 3:38:41 PM

Highways for Anno

Highways

CDOT Engineering Regions

Transportation Planning Regions (TPR)

County Boundaries

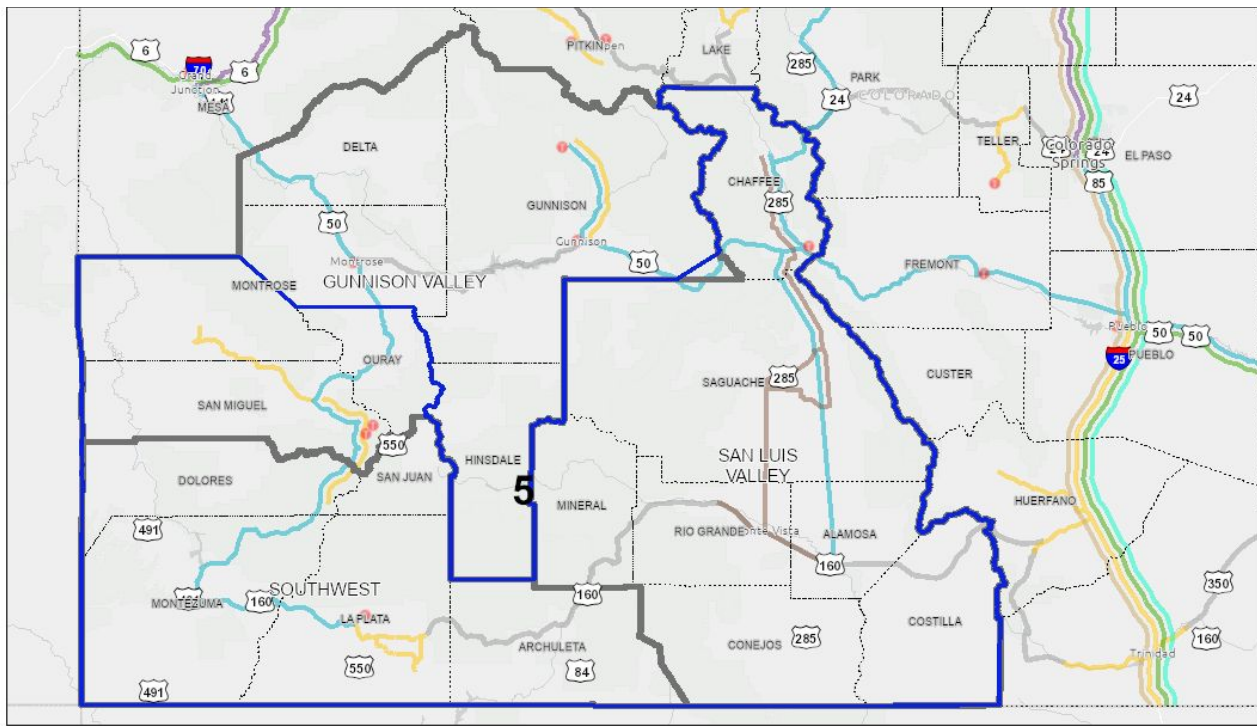
Ute Mountain Ute Reservation

Southern Ute Reservation

1:2,041,483
0 12.5 25 50 mi

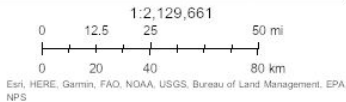
0 20 40 80 km

Esri, HERE, Garmin, FAO, NOAA, USGS, Bureau of Land Management, EPA, NPS



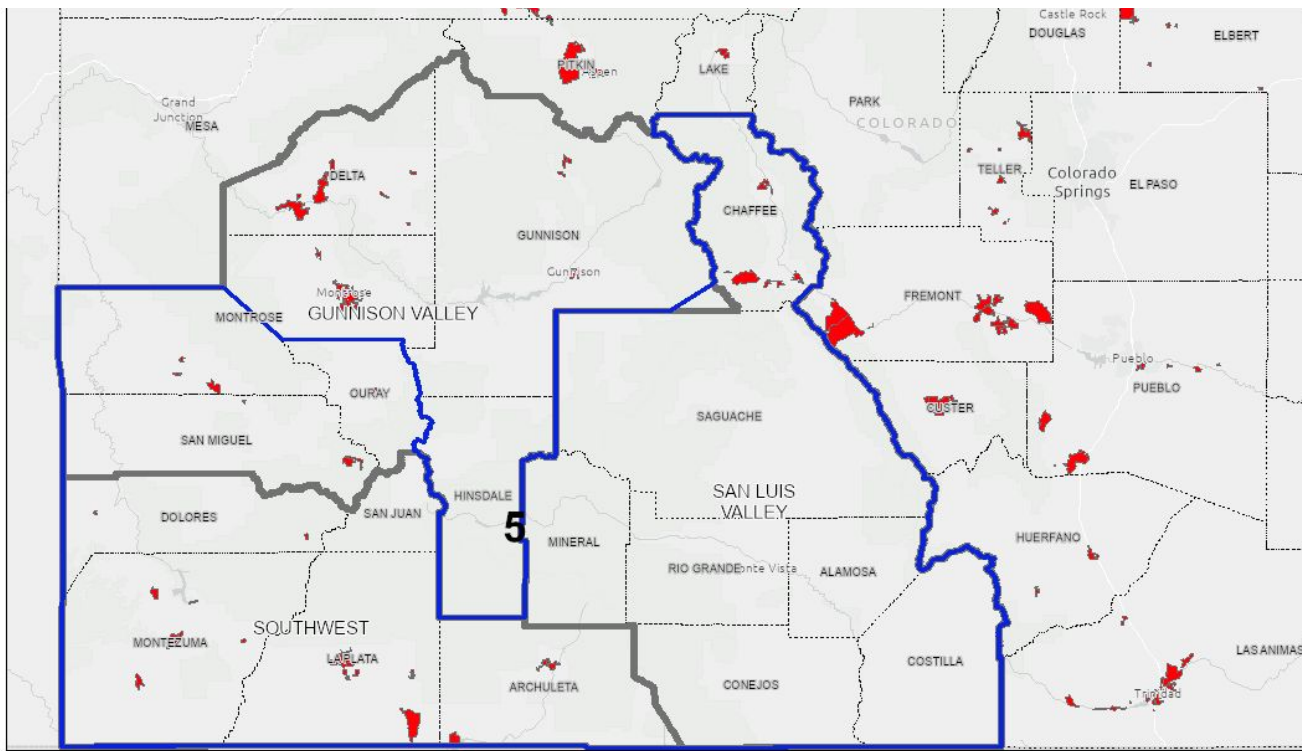
7/20/2023, 1:23:46 PM

- | | | |
|---------------------------------------|---------------------------------------|---------------------------------------|
| Highways for Arno | Local Transit Systems | Intercity Bus Routes |
| CDOT Engineering Regions | Bus Rapid Transit | Chaffee Shuttle |
| Transportation Planning Regions (TPR) | VelociRFTA: Aspen to Glenwood Springs | El Paso-Los Angeles Limousine Express |
| County Boundaries | | Greyhound |





Transit District Boundaries



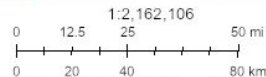
7/19/2023, 4:15:11 PM

CDOT Engineering Regions

County Boundaries

Transportation Planning Regions (TPR)

Transit Service Areas for Census Designated Places

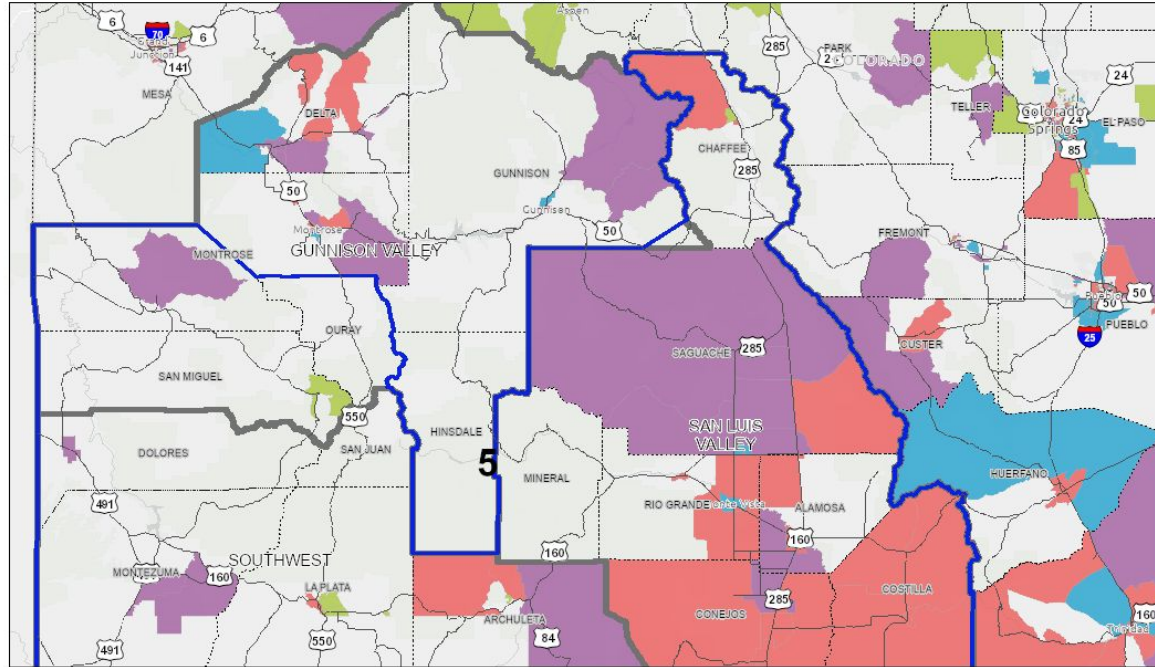


Esri, HERE, Garmin, FAO, NOAA, USGS, Bureau of Land Management, EPA, NPS



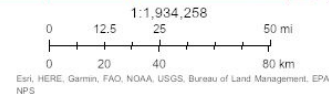
Disproportionately Impacted Communities

Disproportionately Impacted Communities

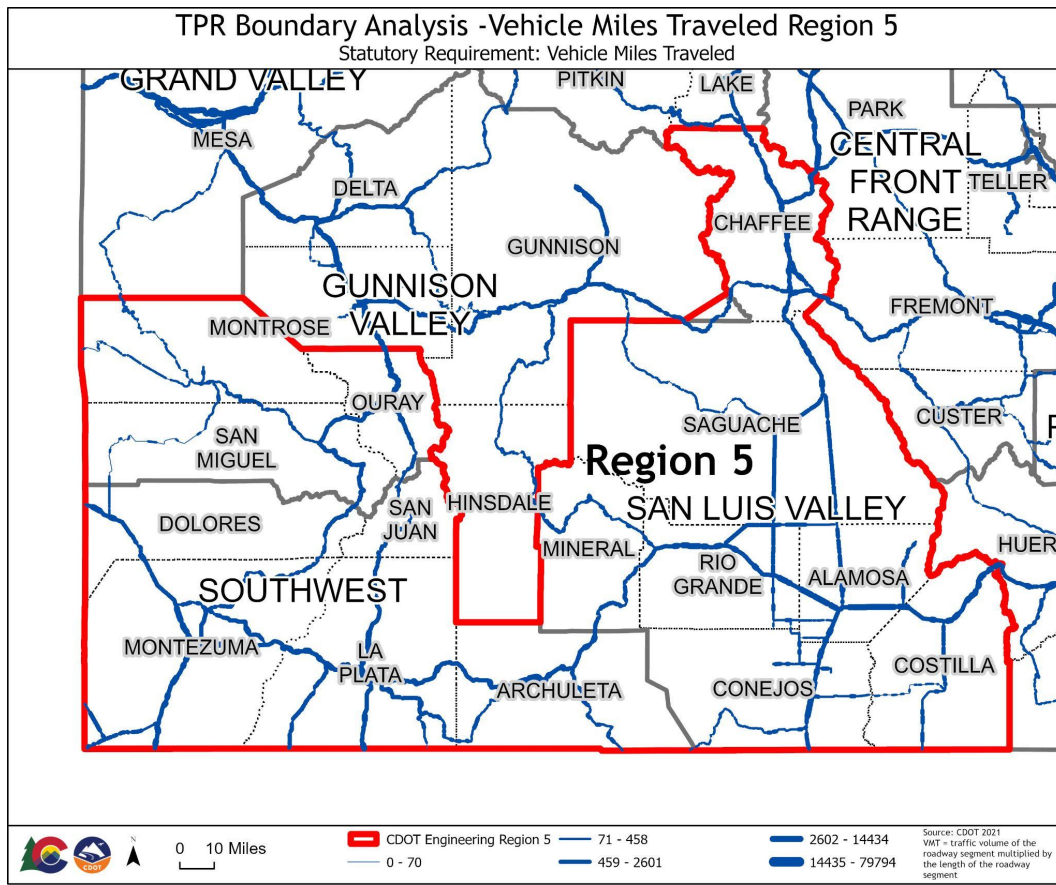


7/24/2023, 3:41:02 PM

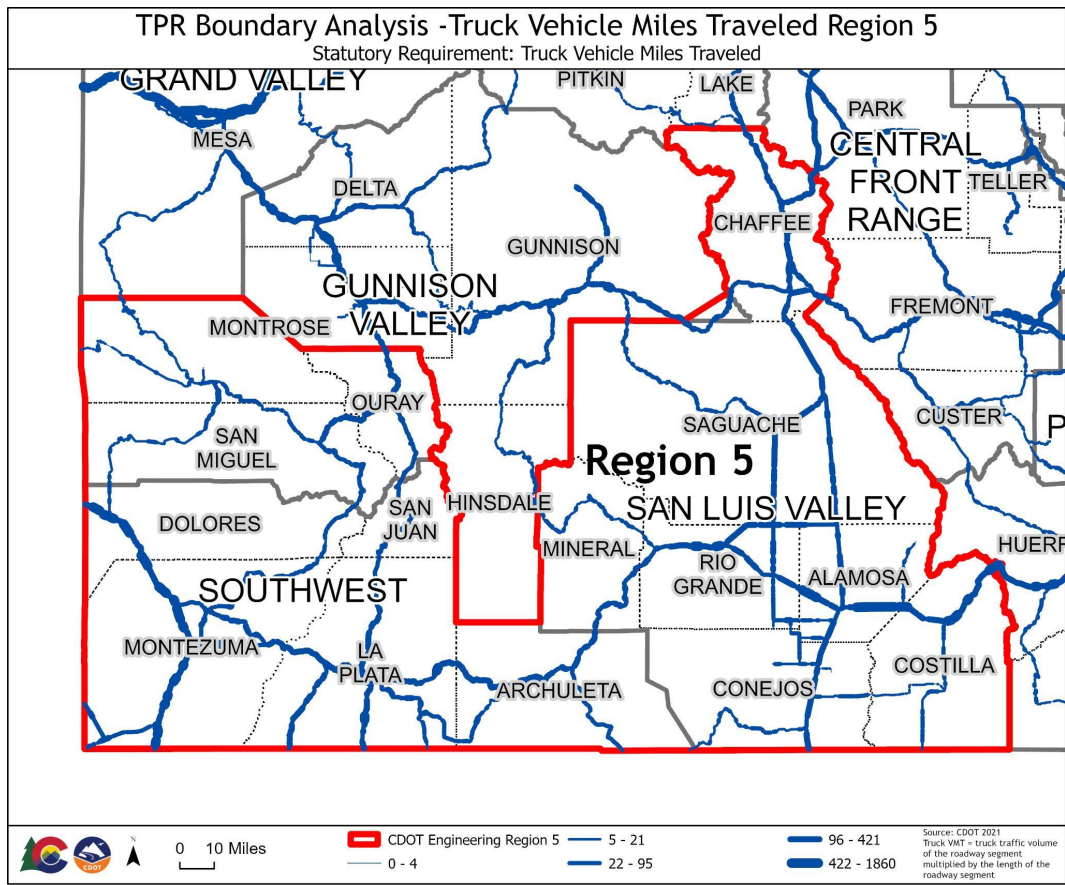
- Highways for Anno
- Highways
- CDOT Engineering Regions
- Transportation Planning Regions (TPR)
- County Boundaries
- Disproportionately Impacted Communities
- More than one category
- People of Color
- Housing Burden
- Low Income



Vehicle Miles Traveled

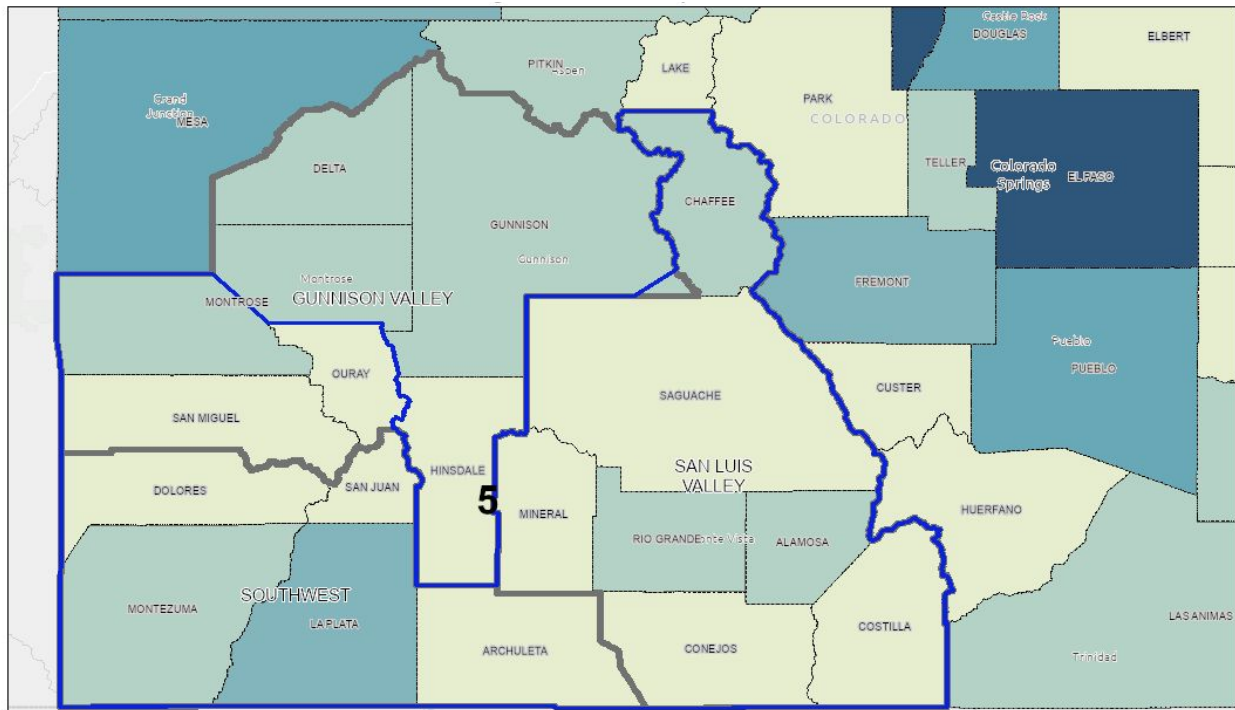


Truck Vehicle Miles Traveled





1990 Population by TPR



7/19/2023, 11:07:22 AM

CDOT Engineering Regions

Transportation Planning Regions (TPR)

County Boundaries

Census 1990

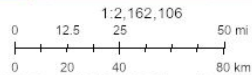
467 - 10,000

> 10,000 - 25,000

> 25,000 - 60,000

> 60,000 - 130,000

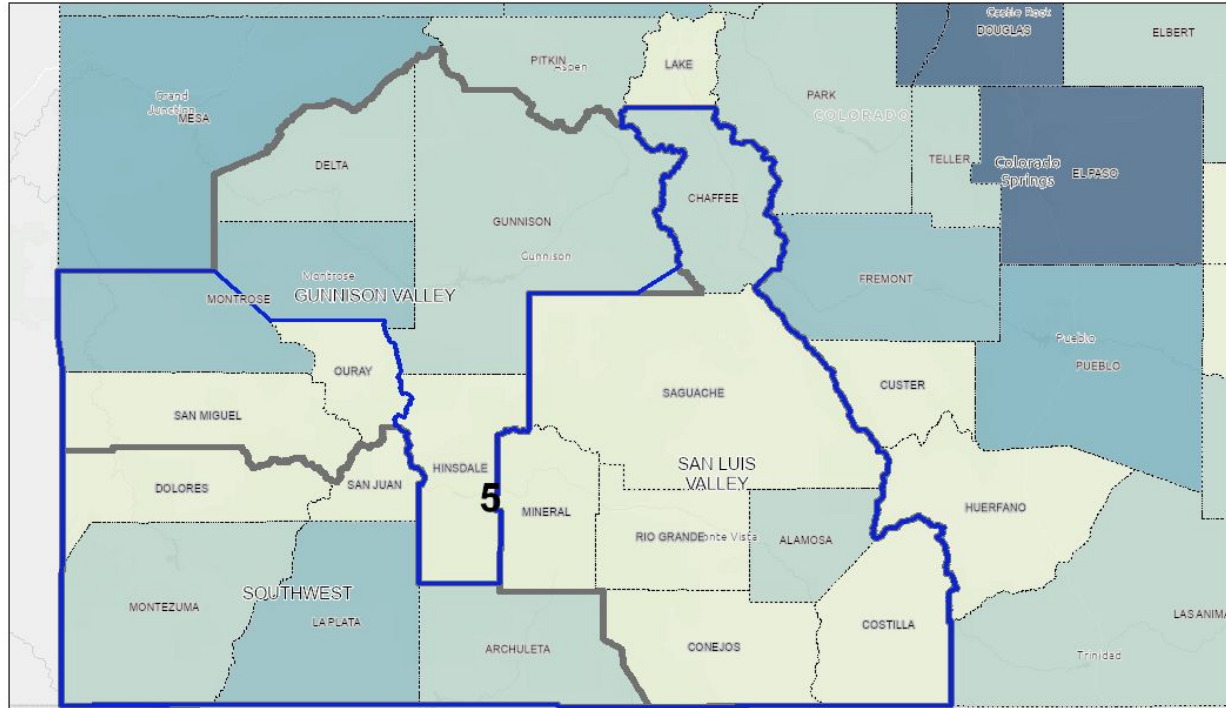
> 265,000 - 467,610



Esri, HERE, Garmin, FAO, NOAA, USGS, Bureau of Land Management, EPA, NPS



2021 Population by TPR



7/19/2023, 11:11:00 AM

CDOT Engineering Regions

Transportation Planning Regions (TPR)

County Boundaries

2021 Population by County

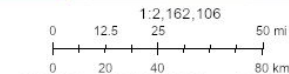
741 - 13,000

> 13,000 - 32,000

> 32,000 - 75,000

> 75,000 - 170,000

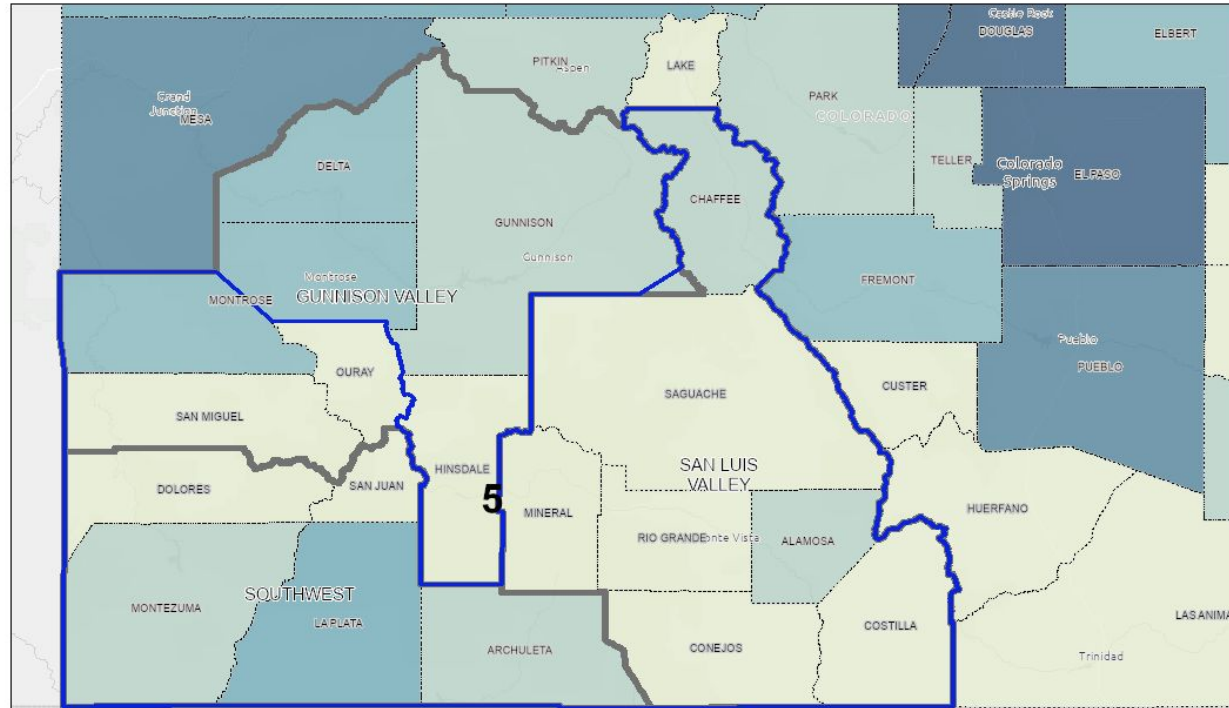
> 360,000 - 738,532



Esri, HERE, Garmin, FAO, NOAA, USGS, Bureau of Land Management, EPA, NPS



2050 Population by TPR



7/19/2023, 11:12:33 AM

CDOT Engineering Regions

Transportation Planning Regions (TPR)

County Boundaries

2050 Population Projections By County

700,021 - 13,000

> 13,000 - 32,000

> 32,000 - 75,000

> 75,000 - 170,000

> 170,000 - 360,000

> 360,000 - 1,004,027

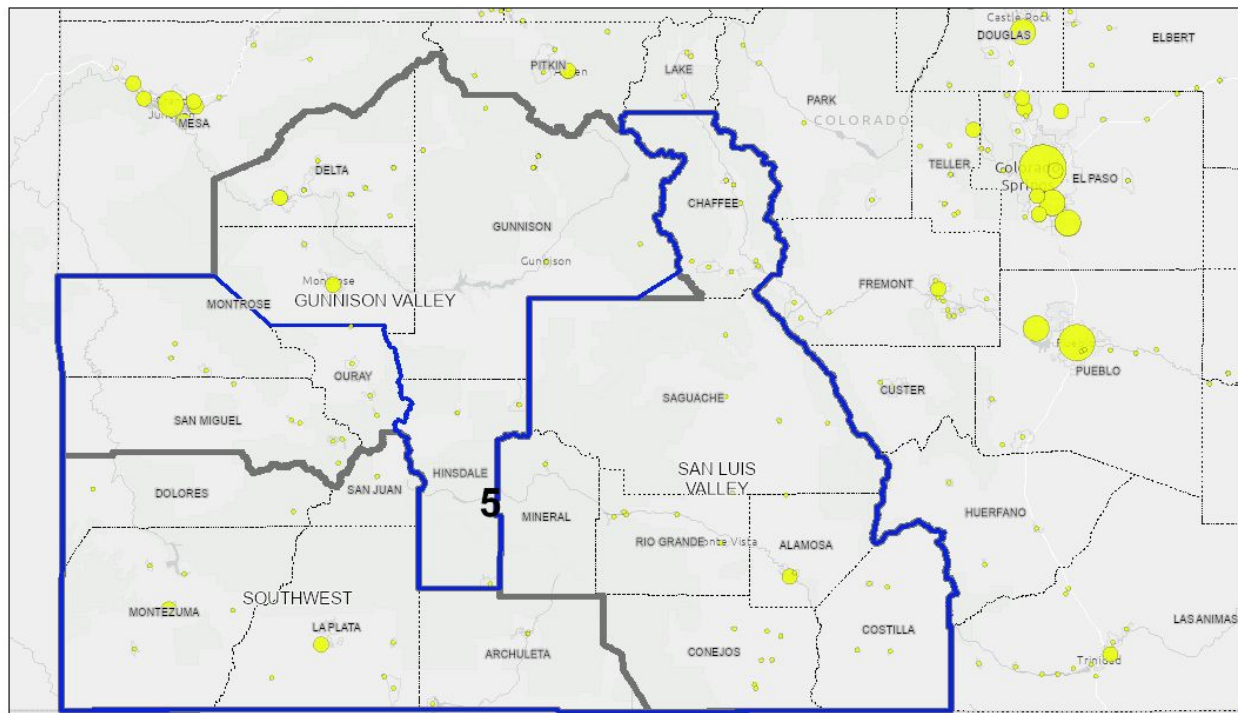
1:2,162,106
0 12.5 25 50 mi

0 20 40 80 km

Esri, HERE, Garmin, FAO, NOAA, USGS, Bureau of Land Management, EPA, NPS



Populations of Census Designated Areas



7/19/2023, 11:16:49 AM

CDOT Engineering Regions

Transportation Planning Regions (TPR)

County Boundaries

Census Designated Place Population Estimates

0 - 6,500

> 6,500 - 25,000

> 25,000 - 75,000

> 75,000 - 170,000

> 170,000 - 706,799

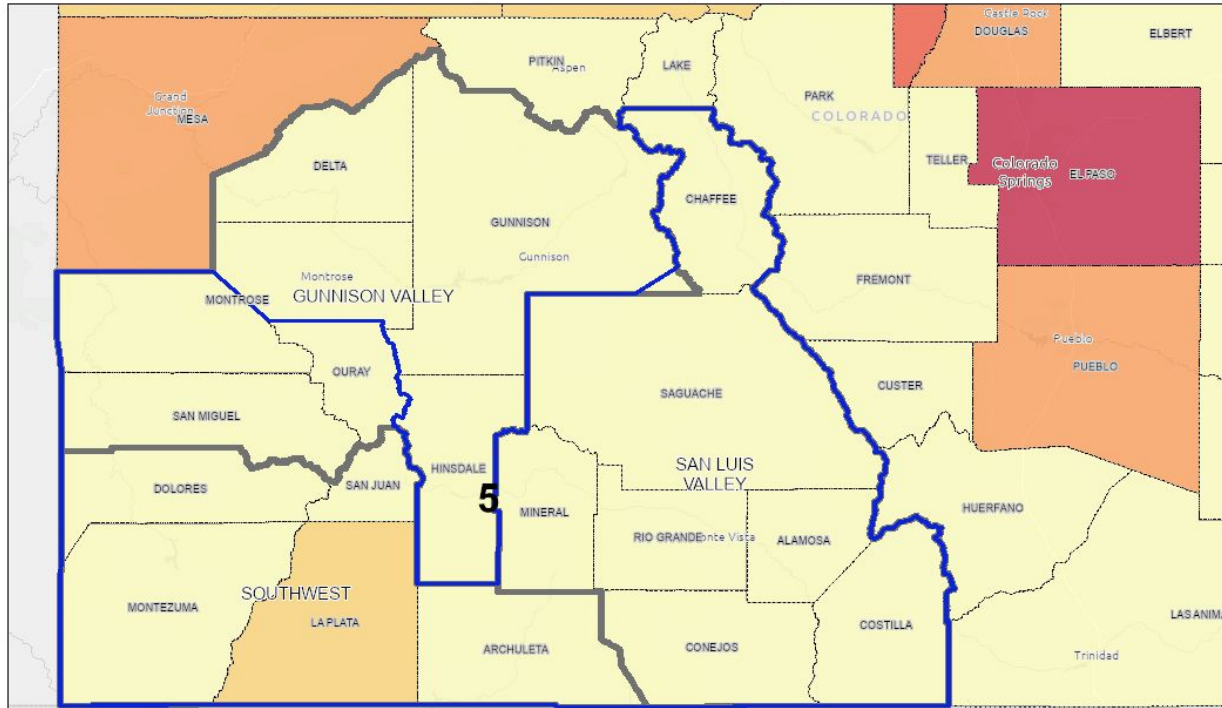
0 12.5 25 50 mi

0 20 40 80 km

Esi, HERE, Garmin, FAO, NOAA, USGS, Bureau of Land Management, EPA, NPS



Vehicle Crashes by County



7/19/2023, 11:24:44 AM

CDOT Engineering Regions

Transportation Planning Regions (TPR)

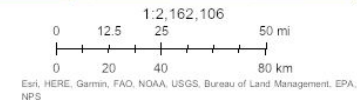
County Boundaries

Vehicle Crashes by County

1 - 119
 120 - 307

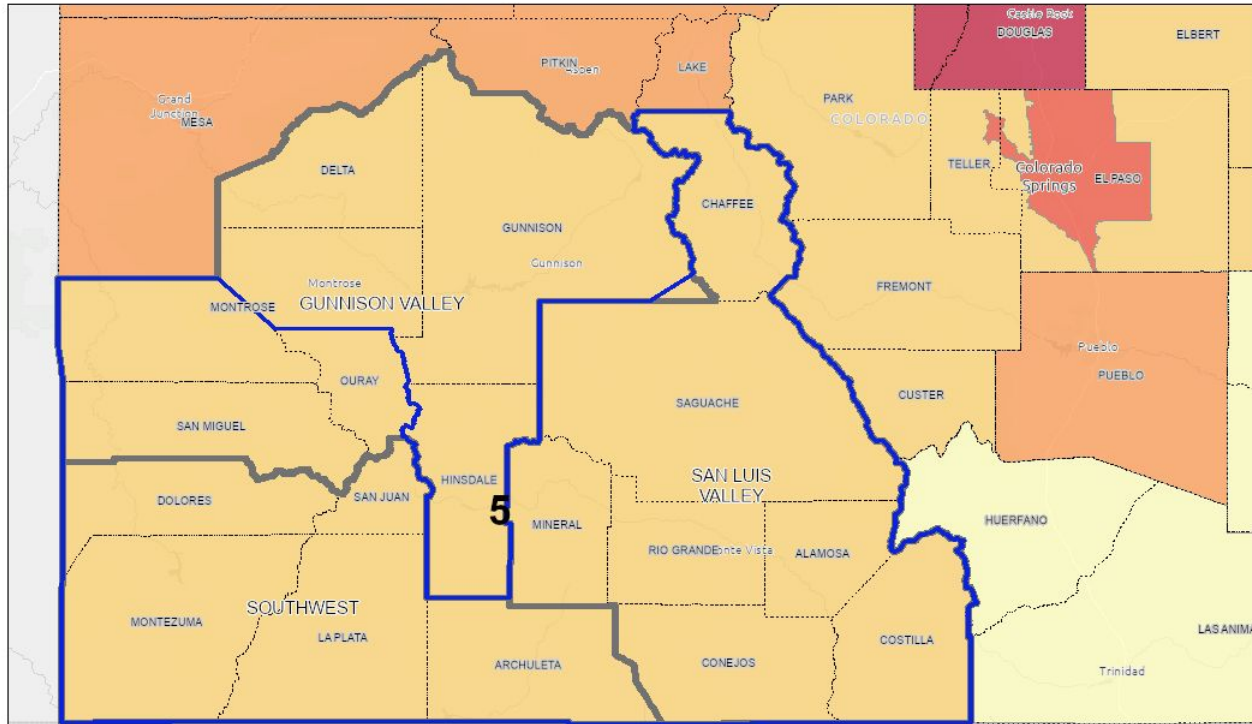
308 - 1281

1282 - 2422
 2423 - 4682





Vehicle Crashes by TPR



7/19/2023, 11:35:56 AM

CDOT Engineering Regions

Transportation Planning Regions (TPR)

County Boundaries

Vehicle Crashes by TPR

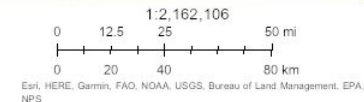
110 - 208

209 - 356

357 - 605

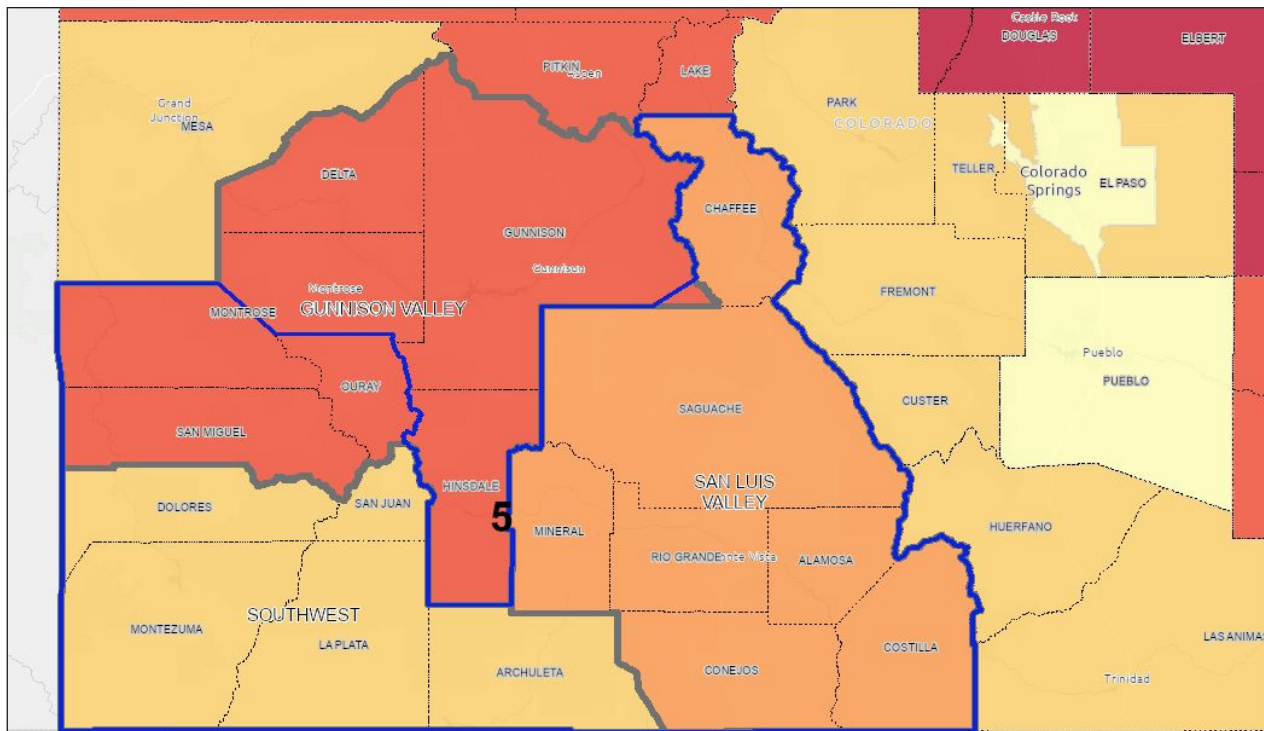
606 - 1614

1615 - 8309





Lane Miles by TPR



7/19/2023, 5:02:07 PM

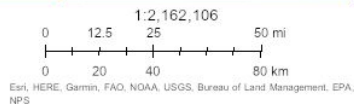
CDOT Engineering Regions

Transportation Planning Regions (TPR)

County Boundaries

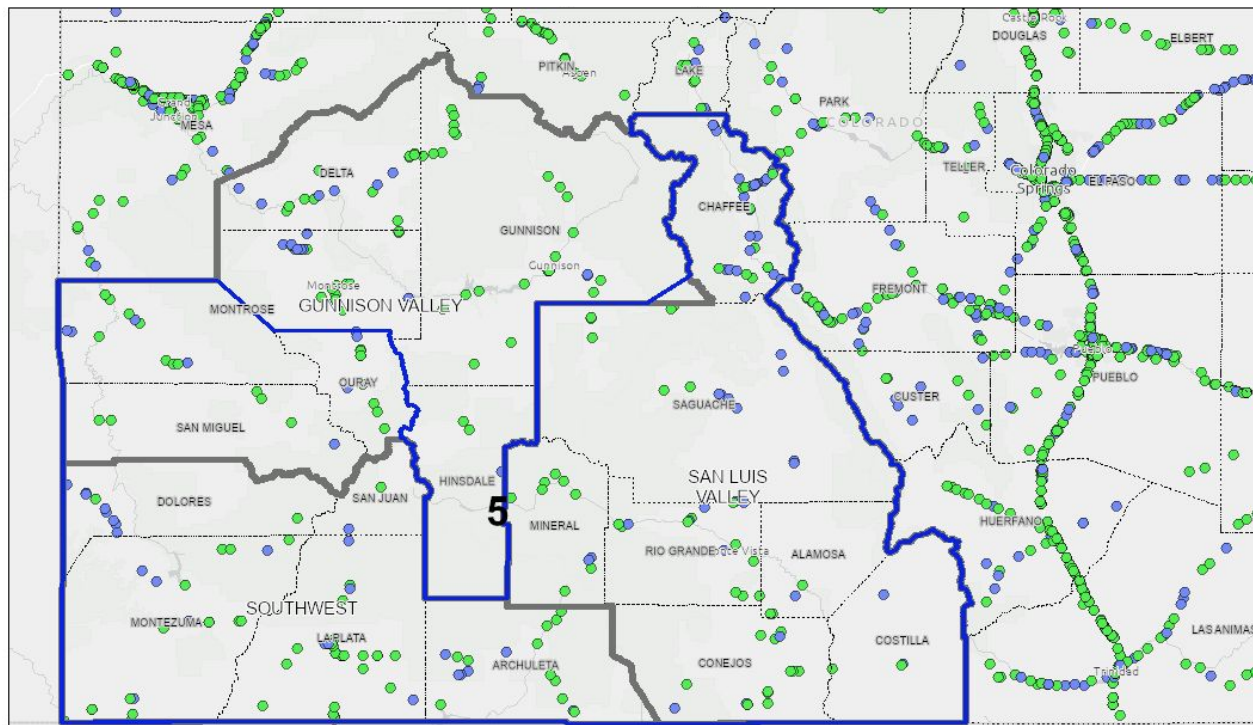
Lane Miles per TPR

	640.7 - 750		> 1,250 - 1,500
	> 750 - 1,250		> 1,500 - 1,750
	> 1,750 - 4,433.7		





Bridges and Culverts



7/19/2023, 11:45:03 AM

CDOT Engineering Regions

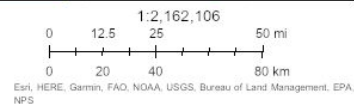
Transportation Planning Regions (TPR)

County Boundaries

Bridges and Major Culverts

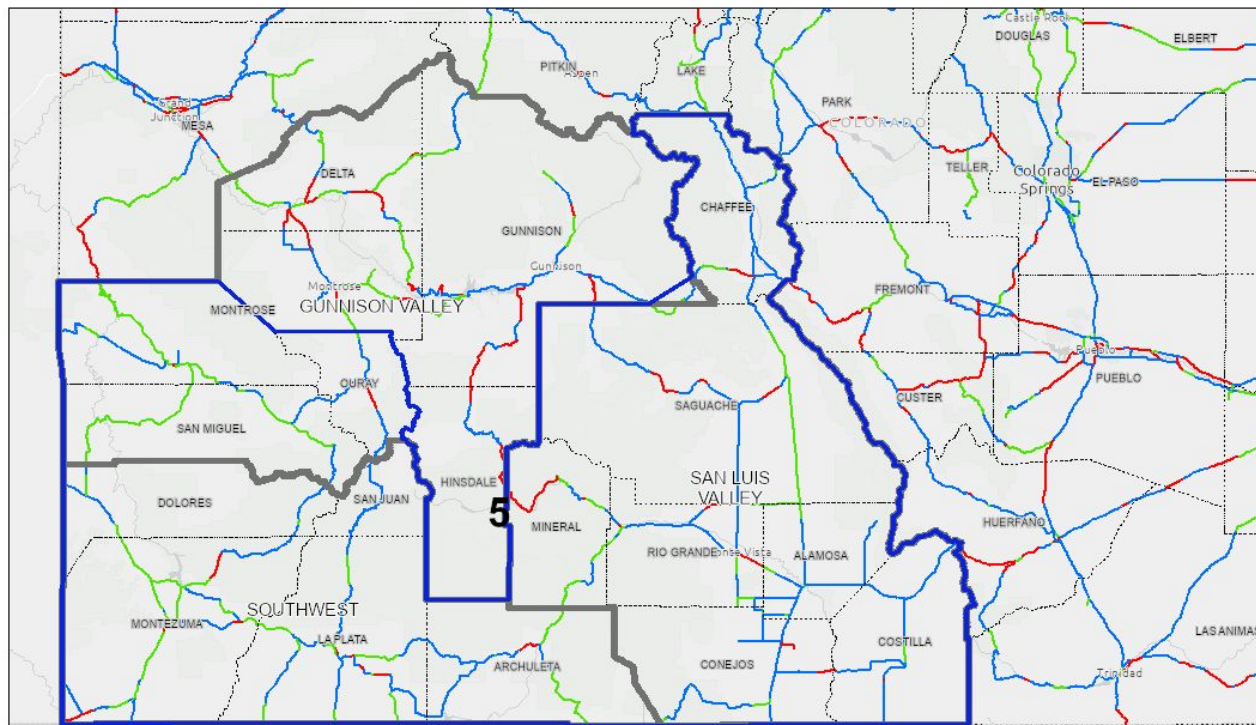
BRIDGE

CULVERT







Highway Drivability Life



7/19/2023, 11:46:46 AM

 CDOT Engineering Regions

 Transportation Planning Regions (TPR)

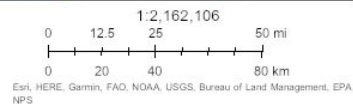
 County Boundaries

Highways: Drivability Life

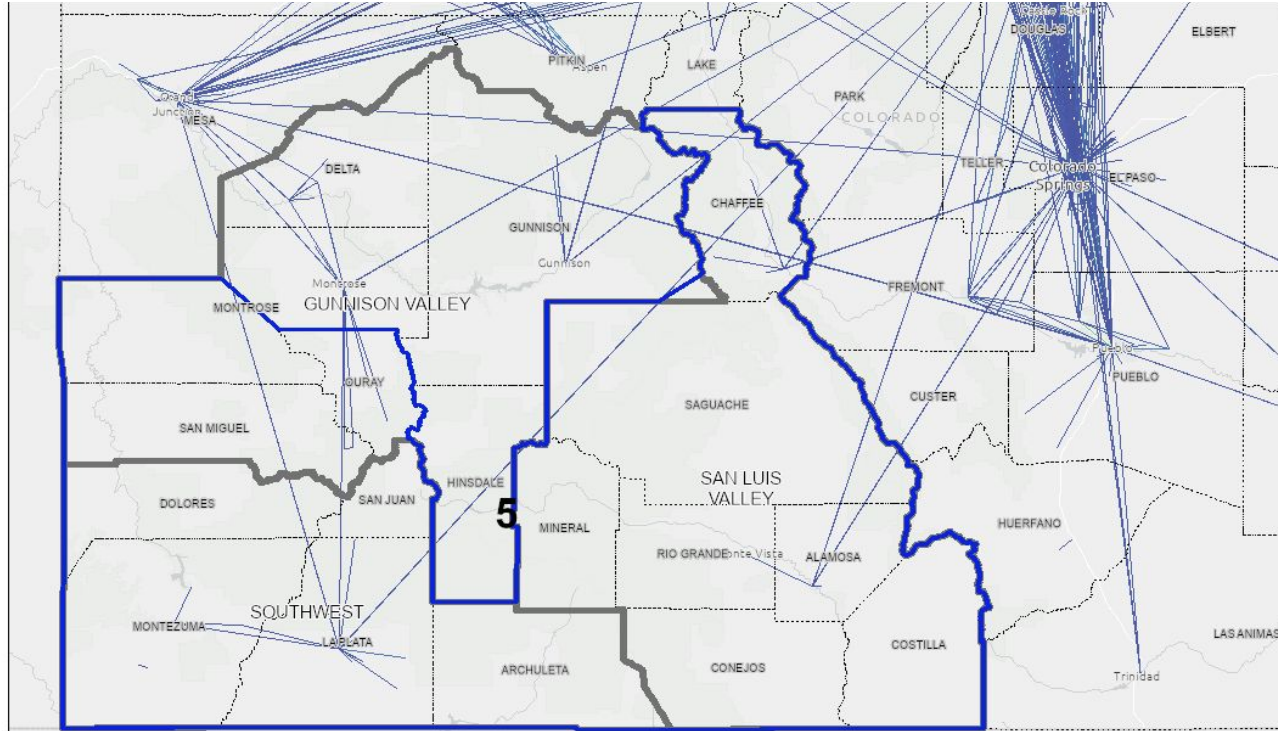
 HIGH

 MODERATE

 LOW



Commuter Origin and Destination



7/19/2023, 12:01:38 PM

- CDOT Engineering Regions
- Transportation Planning Regions (TPR)
- County Boundaries

Commuter Origin and Destination (100+ Commuters)

	10,000
	100,000
	1,000
	5,000
	100

1:2,162,106

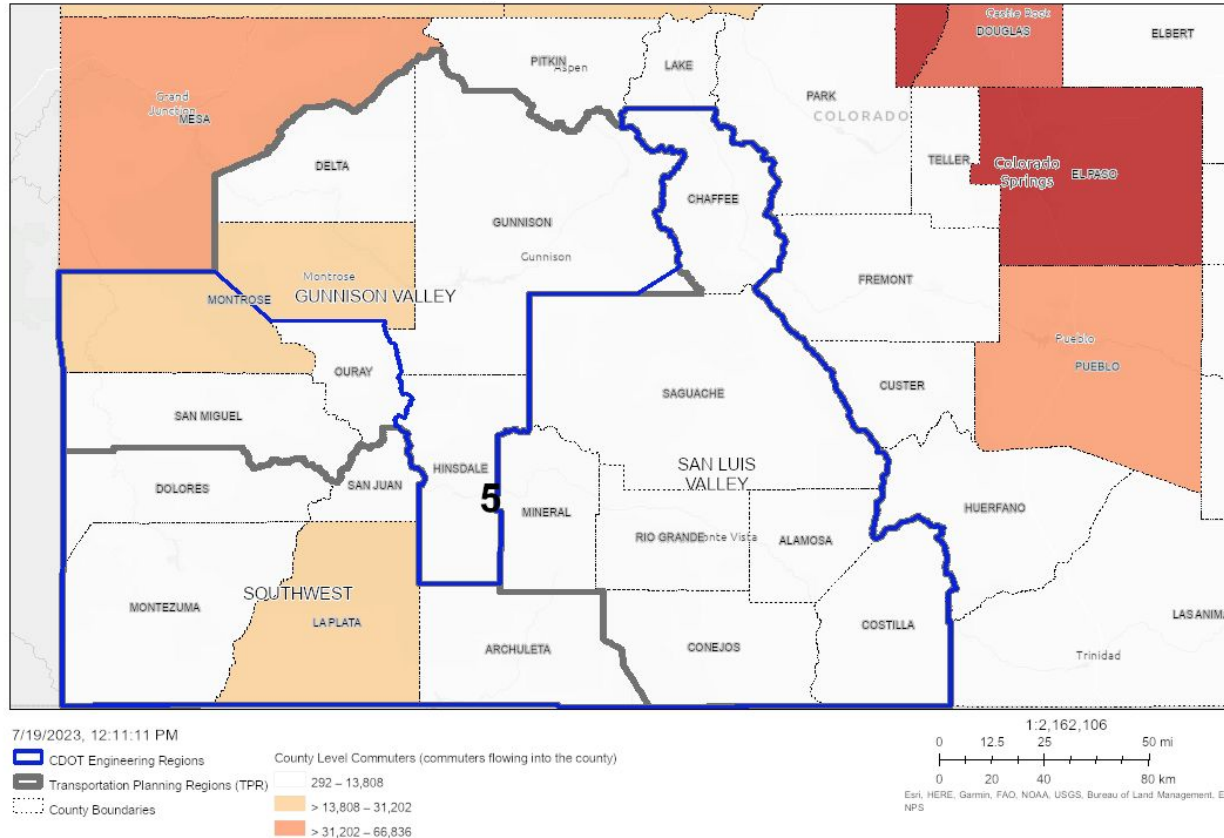
0 12.5 25 50 mi

0 20 40 80 km

Esri, HERE, Garmin, FAO, NOAA, USGS, Bureau of Land Management, EPA, NPS



Commuters from Out of County





 Transportation Planning Regions (TPR)

 County Boundaries

County Level Tourism Statistics

☐ \$1,400,000 – \$153,800,000

☒ \$153,800,000 – \$373,300,000

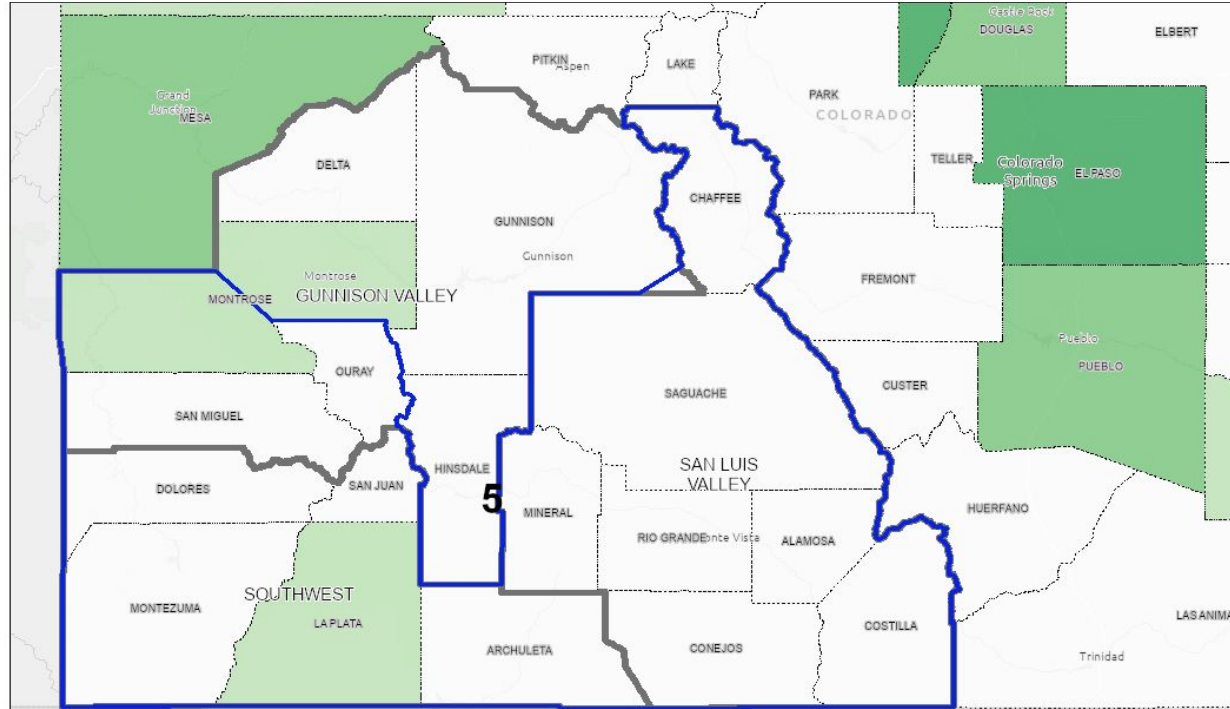
\$373.300.000 – 830.000.000

\$830,000,000 – \$1,800,000,000





County Level Movement of Goods



7/19/2023, 12:14:19 PM

CDOT Engineering Regions

Transportation Planning Regions (TPR)

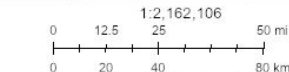
County Boundaries

County Level Movement of Goods

Value Range
\$3,538,063.84 - \$712,000,000
\$712,000,000 - \$2,633,000,000


\$2,633,000,000 - \$10,598,000,000

\$10,598,000,000 - \$25,093,000,000



Esri, HERE, Garmin, FAO, NOAA, USGS, Bureau of Land Management, EPA, NPS

 Transportation Planning Regions (TPR)

 County Boundaries

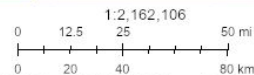
EnviroScreen Air Quality Measures

17.18 - 30

 > 30 - 40

■ $> 40 - 50$

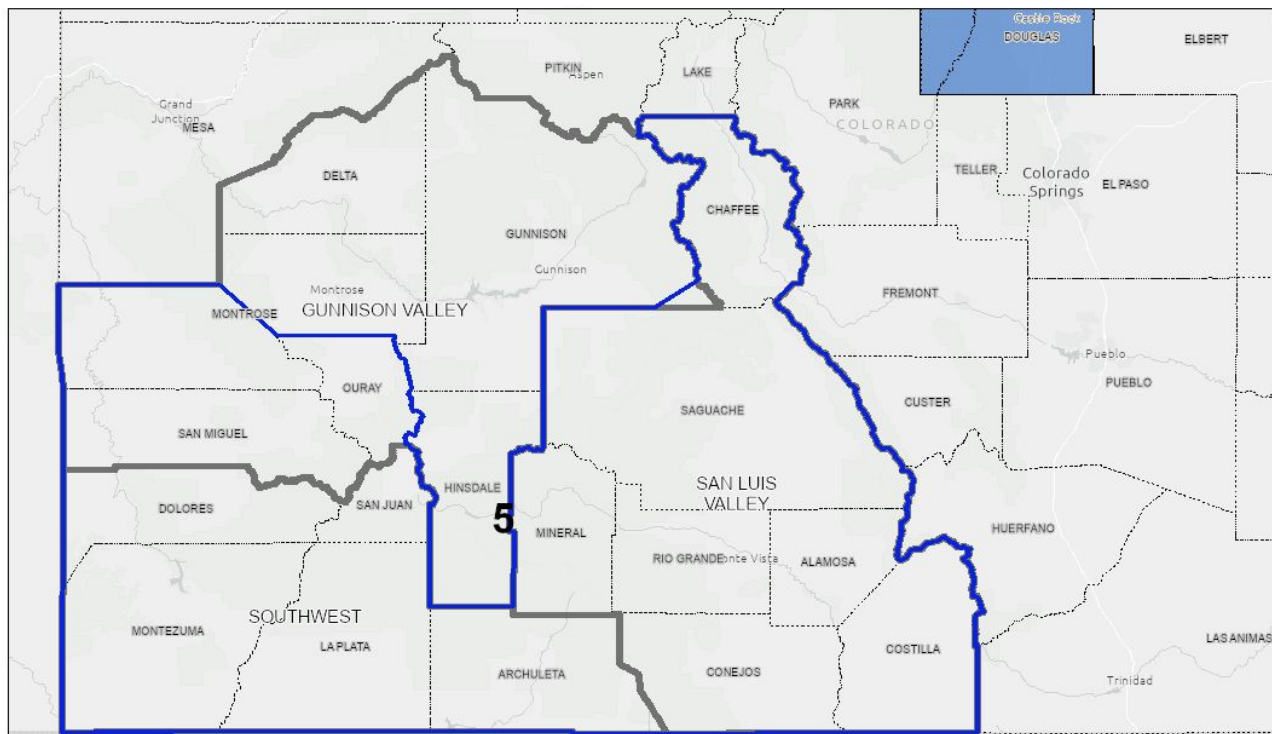
 > 50 - 60



Esri, HERE, Garmin, FAO, NOAA, USGS, Bureau of Land Management, EPA, NPS



Ozone Nonattainment



7/19/2023, 12:21:29 PM

- CDOT Engineering Regions
- County Boundaries
- Transportation Planning Regions (TPR)
- Ozone Nonattainment

