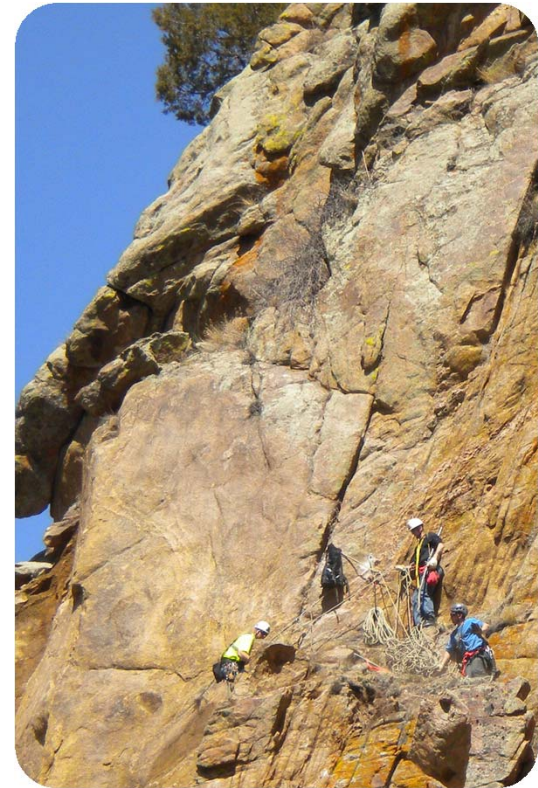
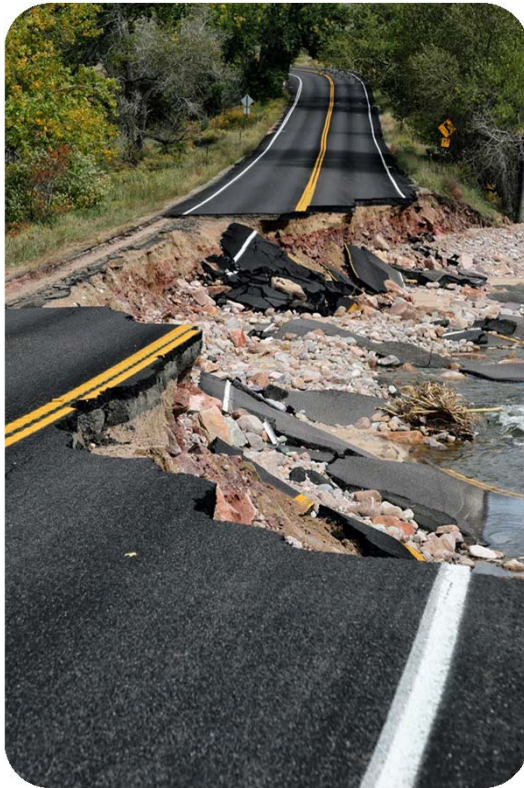




COLORADO

Department of
Transportation



CDOT Organization Update for STAC

June 13, 2014



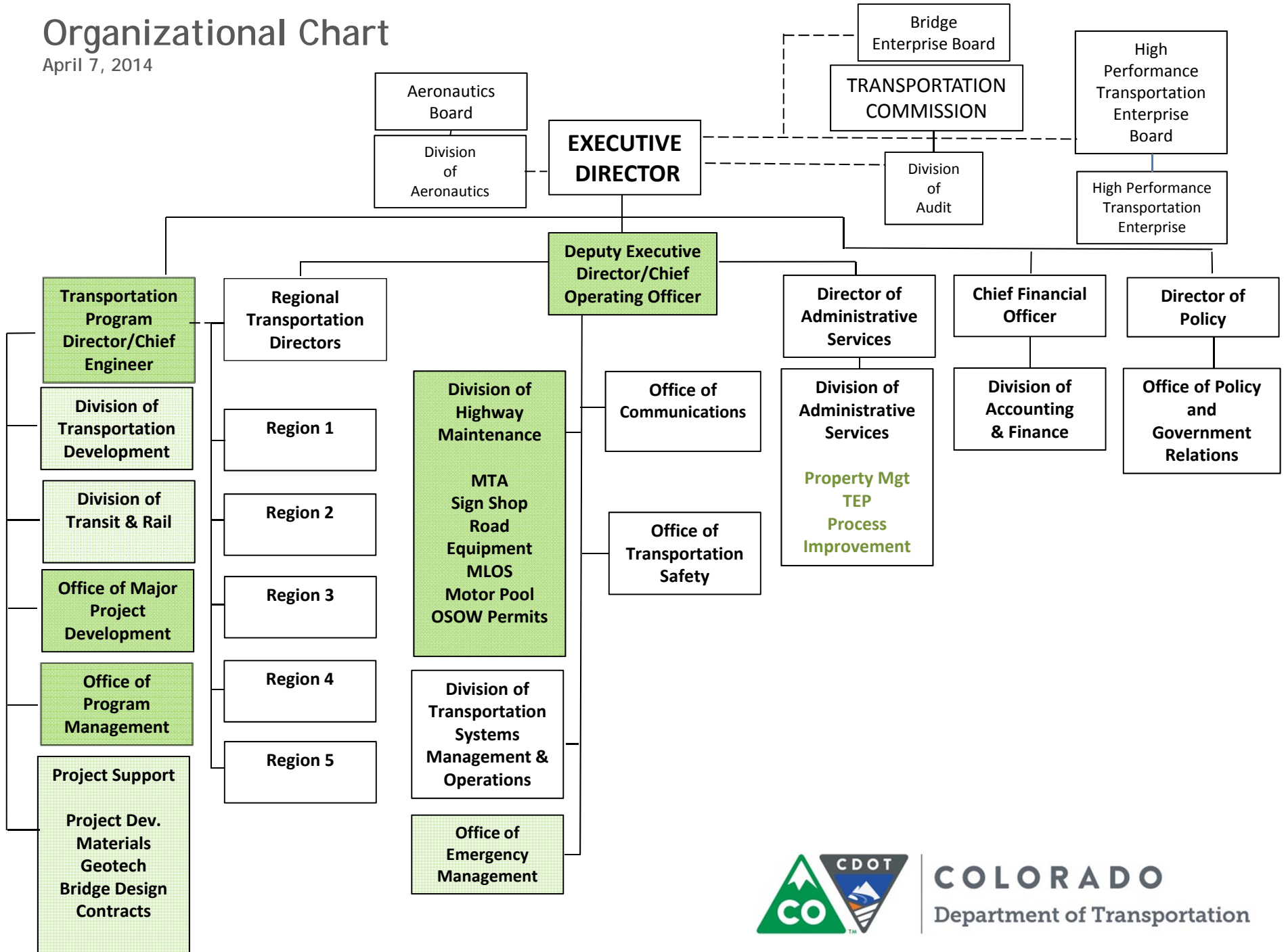
Why Re-Alignment?

- Better align with the future (and even the present)
- Group “like” functionality:
 - “Plan & Develop”
 - “Operate & Maintain”
- Operations, Maintenance, Design & Construction too big for one roof?
- System preservation & system operations more important than ever before
- Statewide collaboration within CDOT (DTD & DTR as examples)



Organizational Chart

April 7, 2014

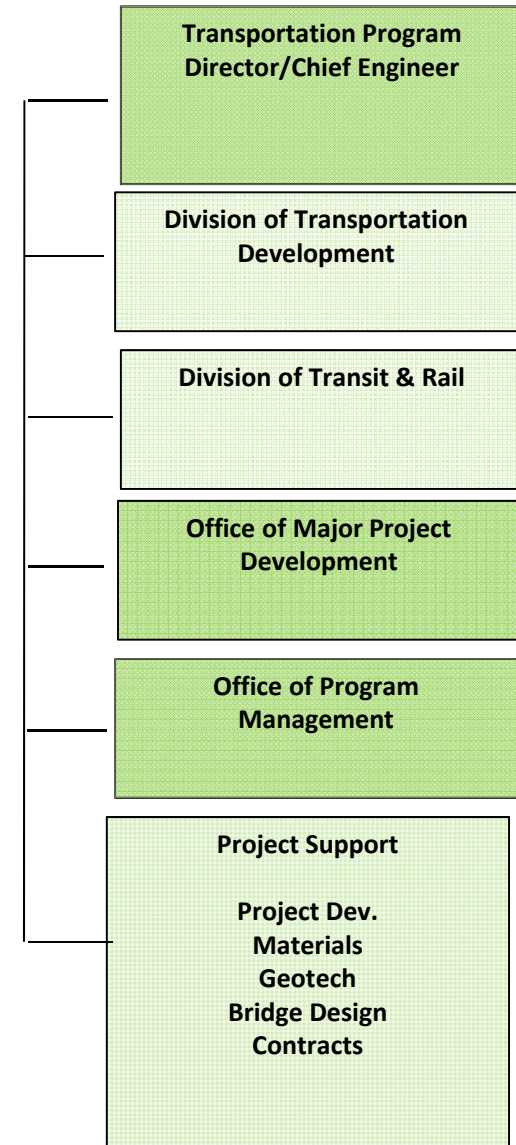


COLORADO
Department of Transportation



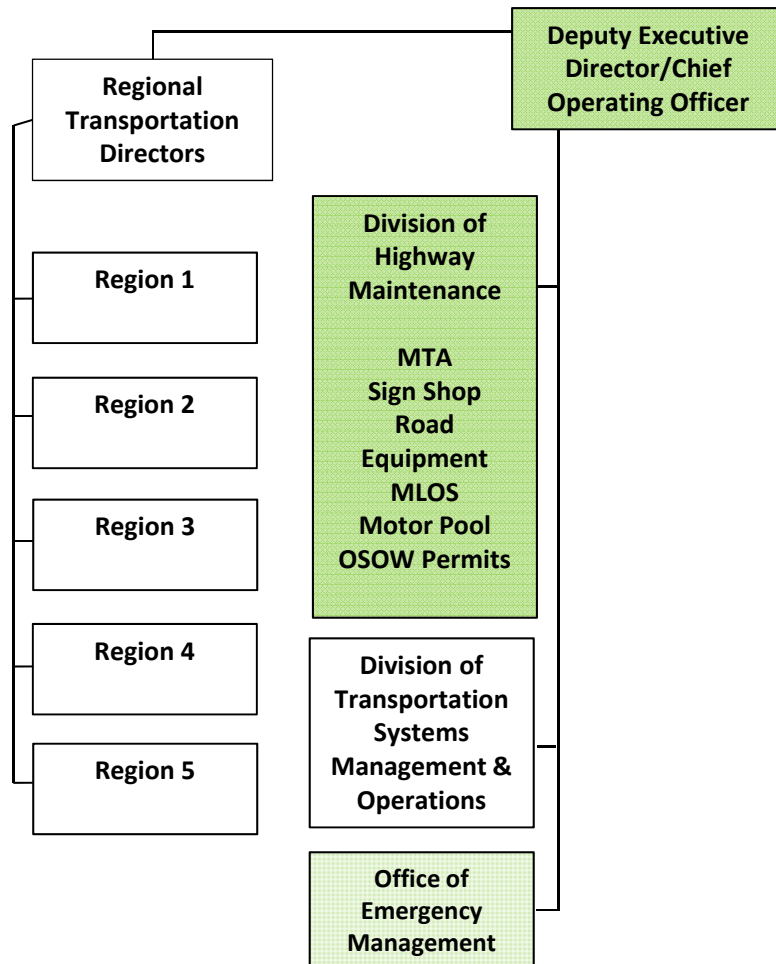
Plan & Develop

- Chief Engineer focus will be on an overall strategy and implementation for transportation project program
- Plan and develop projects and set the vision for the department across all modes of transportation
- Chief Engineer remains “final stamp” related to design and construction and continues to oversee the design and construction program
- New program management functions vs. supervision of 90% of department employees





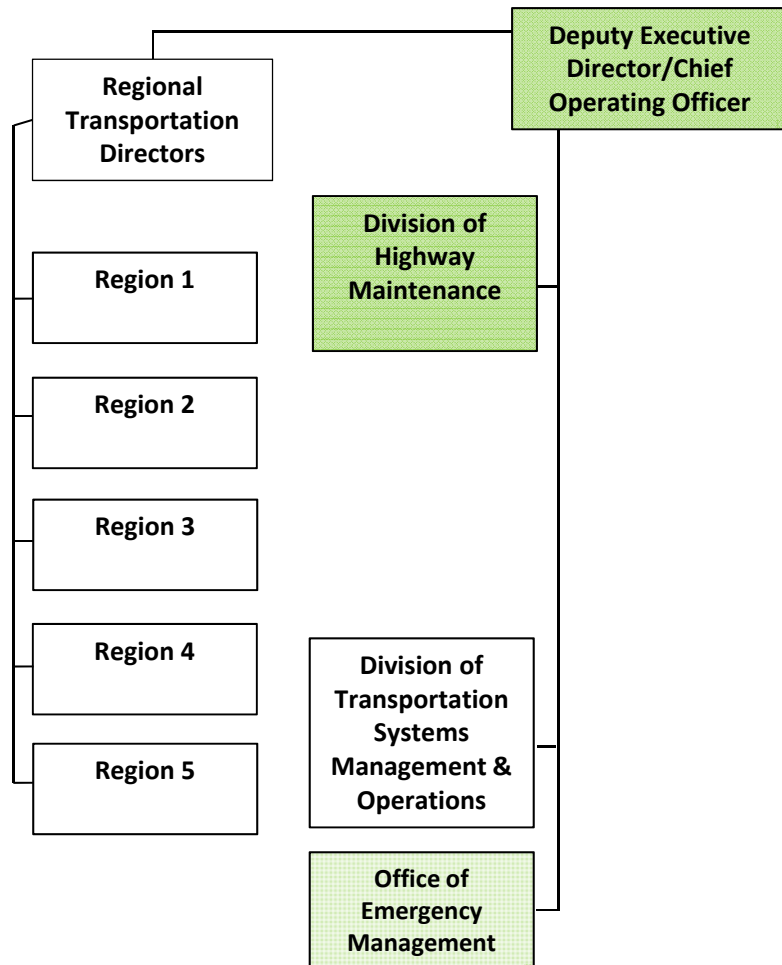
Operate & Maintain



- Elevate importance of maintenance within the organization
- RTDs report to Deputy Executive Director/COO-reflects broader services the regions provide- construction, maintenance, operations, public communications, etc.
- Region staff will see little difference in their jobs
- Why do maintenance staff still report to RTDs and not the “Chief Maintainer”?
- HQ focus strategy and policy/Regions have responsibility and authority for service delivery



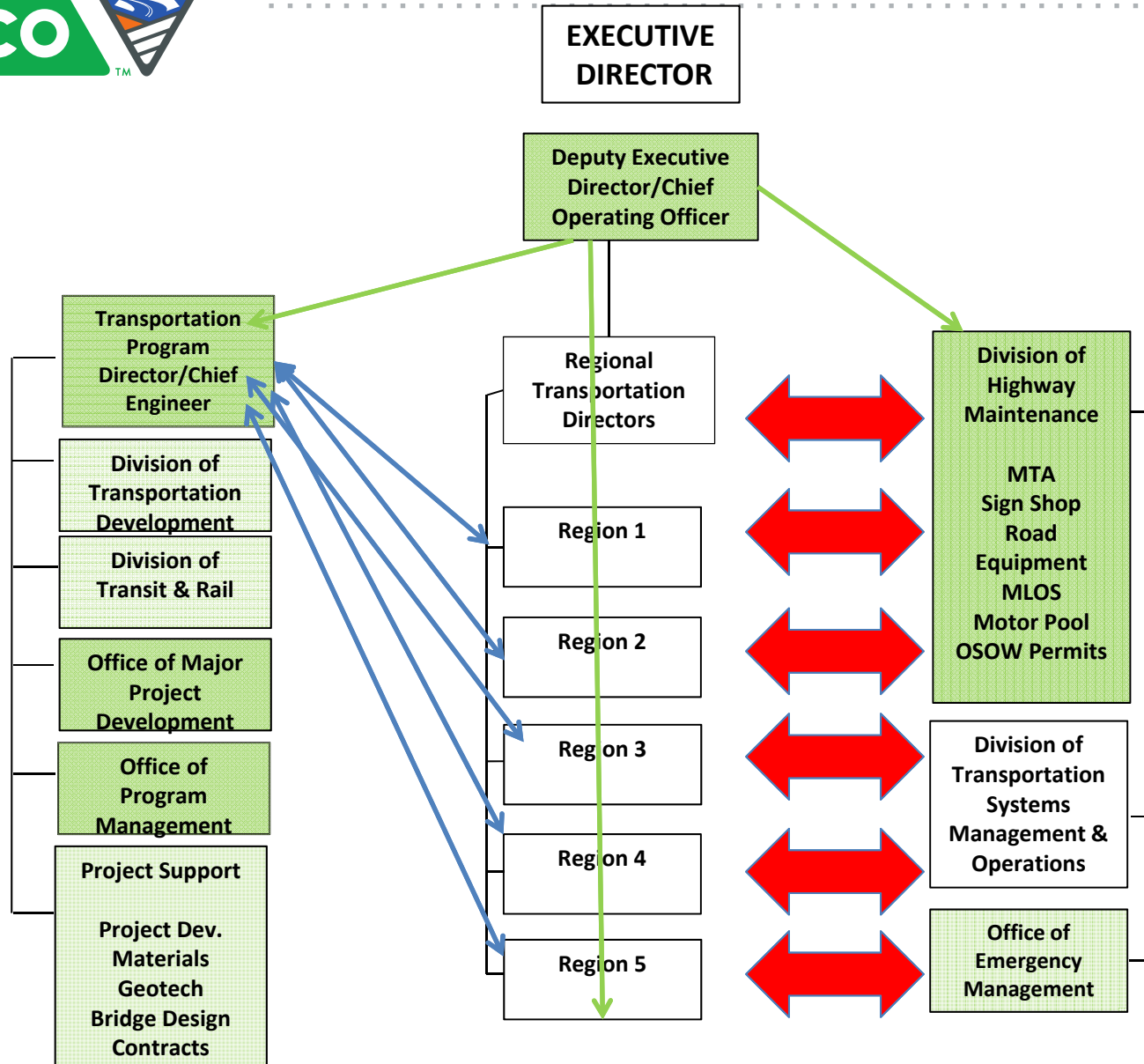
Operate & Maintain





Operate & Maintain

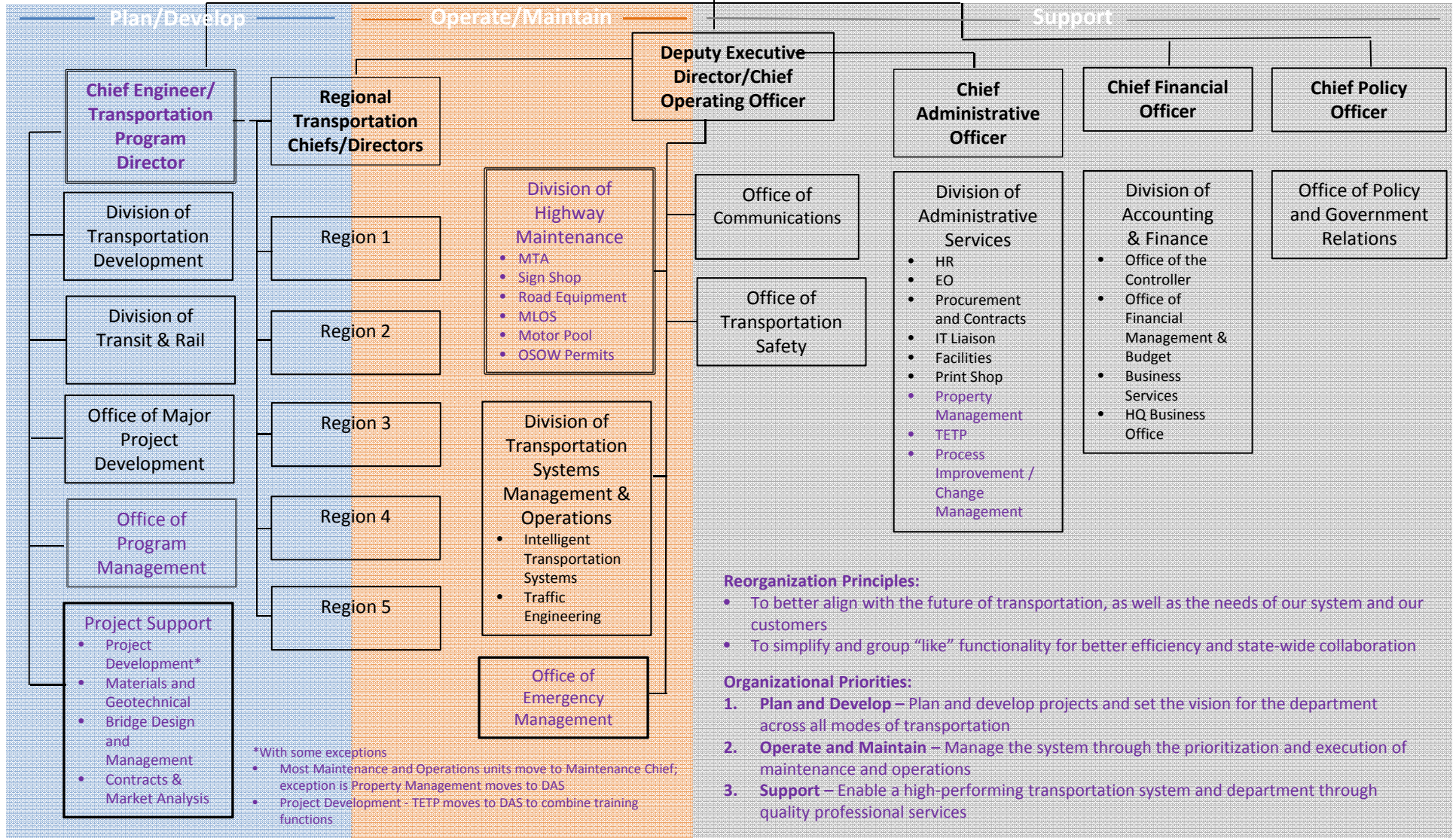
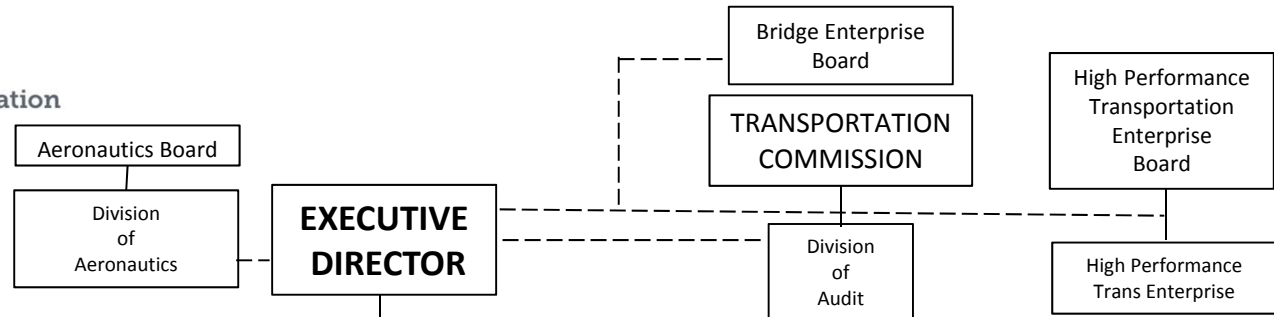






Organizational Chart

March 14, 2014



*With some exceptions
 • Most Maintenance and Operations units move to Maintenance Chief; exception is Property Management moves to DAS
 • Project Development - TETP moves to DAS to combine training functions

- Reorganization Principles:**
- To better align with the future of transportation, as well as the needs of our system and our customers
 - To simplify and group "like" functionality for better efficiency and state-wide collaboration
- Organizational Priorities:**
1. **Plan and Develop** – Plan and develop projects and set the vision for the department across all modes of transportation
 2. **Operate and Maintain** – Manage the system through the prioritization and execution of maintenance and operations
 3. **Support** – Enable a high-performing transportation system and department through quality professional services



Discussion

