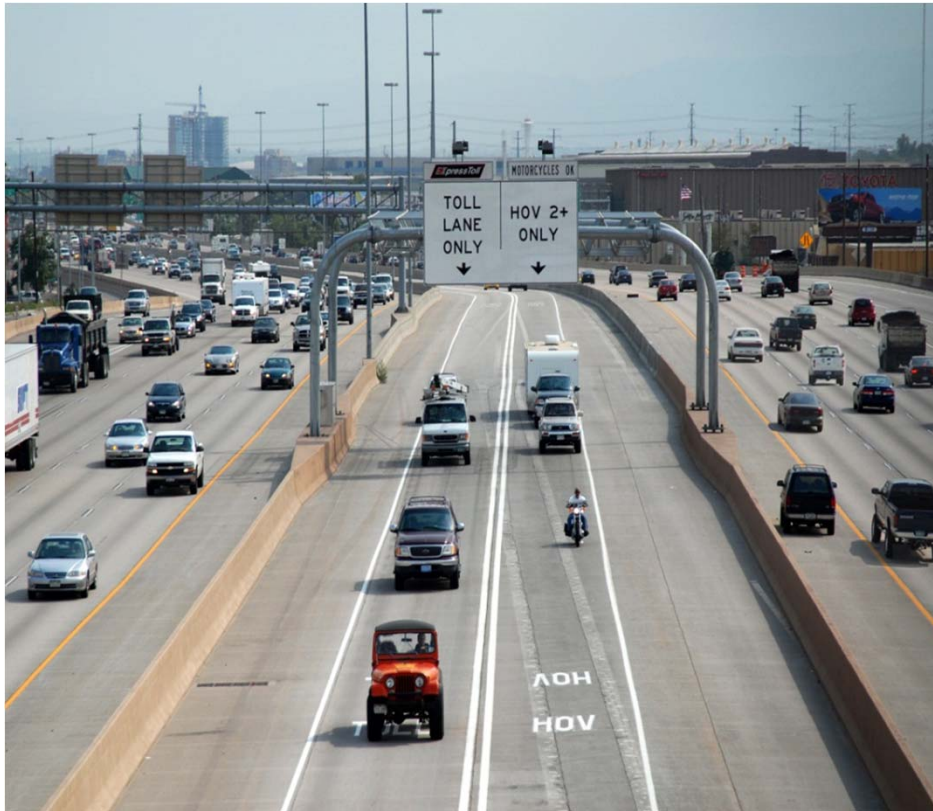


Managed Lanes

STAC Meeting - November 9, 2012

What Are Managed Lanes?



Definition:

Lanes that are proactively managed in response to changing conditions.

Goal:

Improve highway efficiency and meet corridor and community goals.

Types of Managed Lanes

“Operational” techniques for managing lanes:

- Active Traffic Management
- Bus Rapid Transit (BRT)
- Exclusive Lanes (Busways, Transitways, Exclusive Truck Facilities)
- Express Lanes & Tolled Express Lanes
- High Occupancy Vehicle (HOV) Lanes
- High Occupancy Toll (HOT) Lanes
- Lane Restrictions
- Peak Period Shoulder (PPS) Lanes (Hard Shoulder Running)
- Reversible Lanes (Counterflow lanes or contraflow lanes)
- Value Pricing (Congestion Pricing)
- Variable Pricing
- Dynamic Pricing Variable Speed Limits

Managed Lanes in Colorado Today

HOV Lanes

- US 36
West Bound: I-25/Pecos to Federal
East Bound: Sheridan to Pecos
- US85/Santa Fe Drive
North Bound: Bowles Ave to Alameda
South Bound: Platte River Drive to Bowles Ave
- SH 82 (Basalt)
Extend from Basalt to Buttermilk Ski Area
- I-25
7 miles of HOV/HOT lanes between Downtown Denver and US 36



Managed Lanes in Colorado Today

Other

- Downtown Denver—Bus Only Lanes
- Highways with Variable Speed Limits: US36 north of Boulder to Lyons, speeds reduced at night to reduce animal collisions



Benefits of Managed Lanes

To Transportation Facilities

- Improve traffic flow
- Improve safety
- Improve roadway efficiency and reliability
- Improve transit growth and on-time performance
- Assist with emergency vehicle response times

To Travelers

- Manage congestion providing more reliable travel time
- Offer a choice when you can't be late
- Can reward carpoolers, transit riders and certain alt fuel vehicle owners with a faster commute



Goals of a Managed Lanes Policy Directive

Preserve and enhance mobility

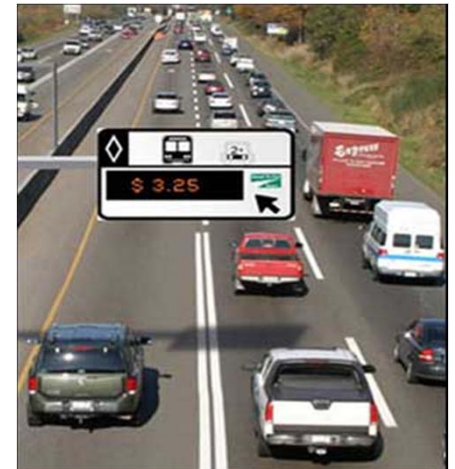
- Provide reliable and predictable travel times
- Increase system efficiency and optimize the movement of people and goods
- Provide congestion avoidance choices for the public
- Improve emergency response
- Enhance opportunities for economic growth through travel efficiencies

Maximize person per vehicle throughput

- Improve transit on-time performance
- Enhance opportunities for transit expansion
- Improve vanpool and carpool travel efficiency

Managed Lanes Policy Directive

- CDOT/HPTE developed a policy directive addressing the consideration of managed lanes during the planning and development of capacity improvements on state highway facilities in Colorado.



Questions?

