

LOS - Levels of Service

LOS is a qualitative measure describing traffic operational conditions. LOS is based on speed and travel time, freedom to maneuver, traffic interruptions, comfort and convenience. In addition to travel volume, roadway LOS is affected by number of access points, lane width, number of lanes and percentage of large vehicles. The conditions characterizing roadway LOS are:



- Best operating condition considered free-flow
- Users are unaffected by presence of others



- Reasonably free-flowing conditions
- Some influence by others



- Constrained constant flow below speed limits
- Additional attention required by drivers to maintain safe operations
- Comfort levels of driver decline noticeably



- Approaching unstable flow
- High passing demand, limited passing capacity
- An acceptable condition for arterial and collector roadways in the community

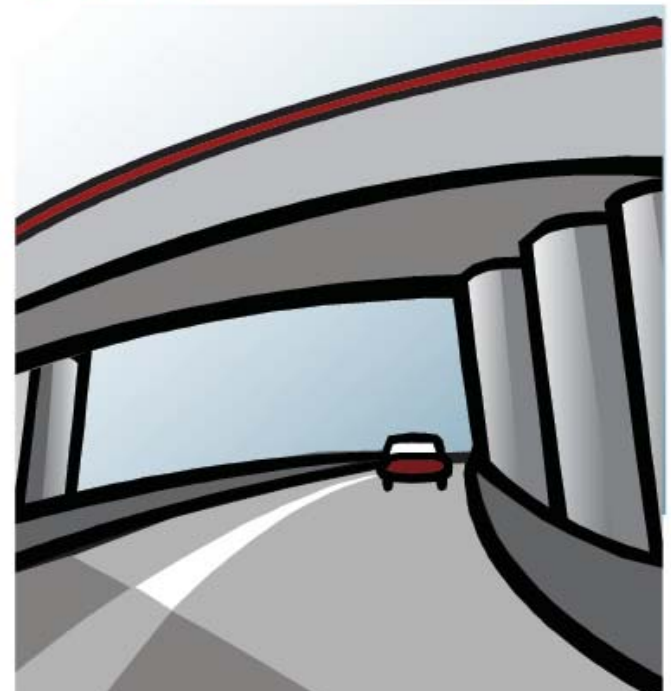


- Unstable flow near capacity
- LOS E often quickly changes to LOS F because of disturbances in traffic flow



- Worst conditions with heavily congested flow, traffic demand exceeding capacity
- Poor travel time, low comfort and convenience

US 6/Wadsworth



Environmental
Assessment