



Scoping Summary Report

APPENDIX H

Public Scoping Meeting Presentation and Display Boards

Project Purpose

Improve safety and mobility for automobile, truck, transit, bicycle, and pedestrian travel at the US 6 and Wadsworth Boulevard interchange and along Wadsworth Boulevard between 3rd Avenue and 13th Avenue.

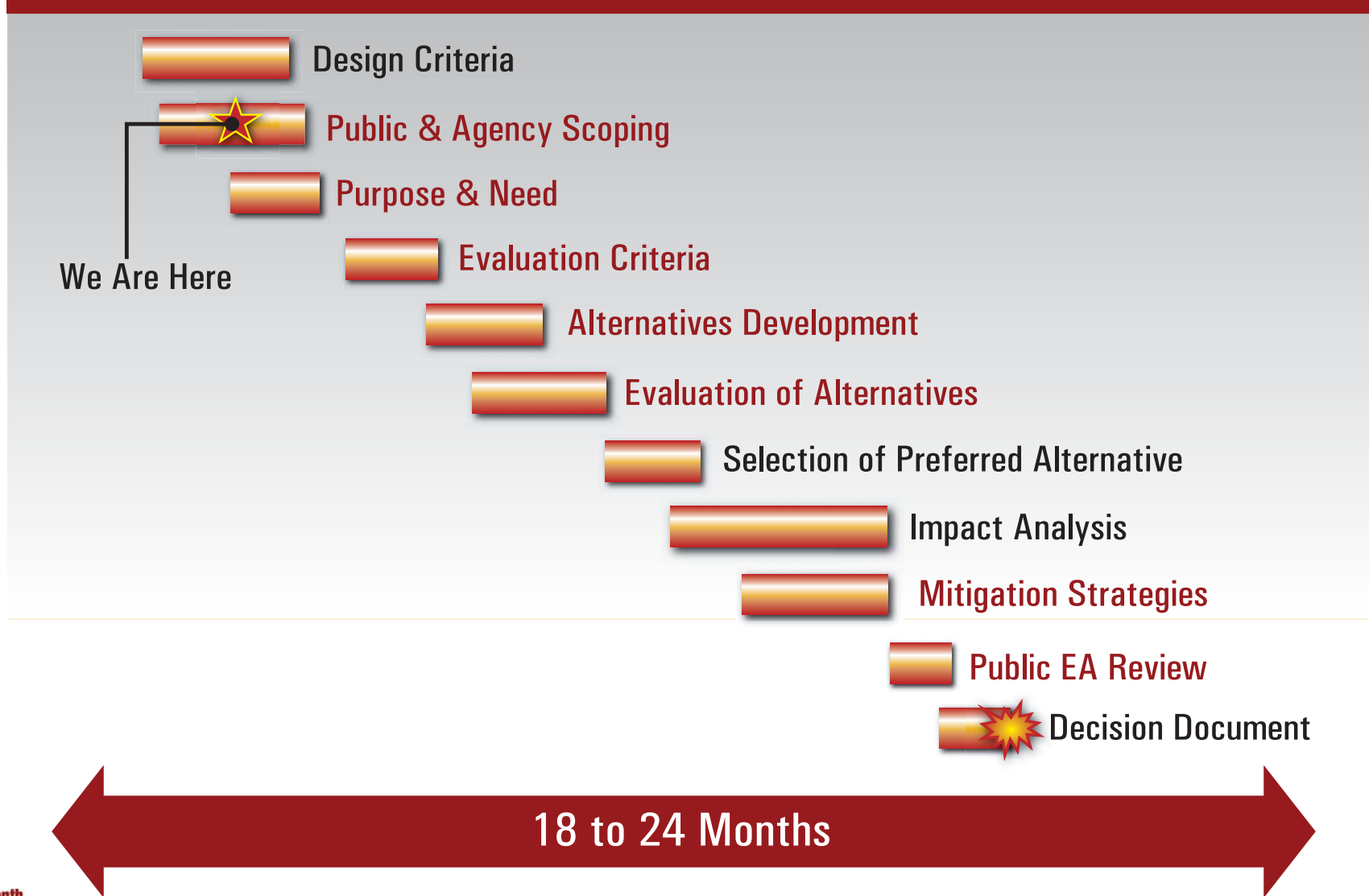


US 6/Wadsworth



Environmental
Assessment

Key Decision Milestones



US 6/Wadsworth








Environmental Assessment



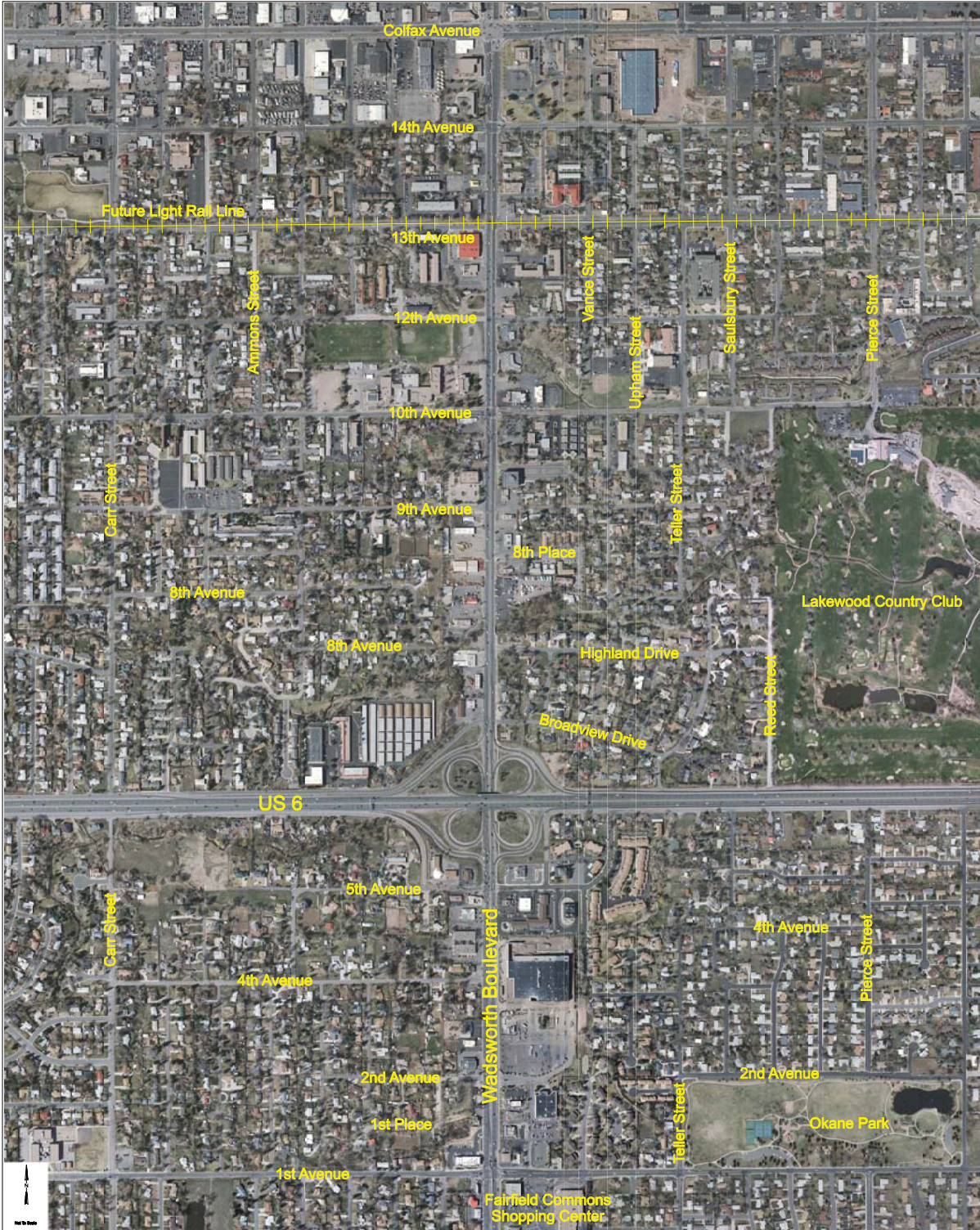
Project Issues



- 
Roadway and Bridge Issues
 This symbol indicates an area of roadway or structural deficiencies, including such issues as inadequate vertical or horizontal curves, insufficient acceleration or deceleration lanes, intersections that are too closely spaced, and conflicts between travel lanes and shoulders or medians.
- 
Drainage Issues
 This symbol indicates an area that has problems with drainage, flooding, or potential flooding.
- 
Traffic and Access Issues
 Traffic and access issues include congestion, inefficient traffic operations, uncontrolled center turn lanes, unrestricted driveway access, and poor mainline, weave, ramp, intersection, and cross street level of service.
- 
Safety Issues
 This symbol represents areas with frequent or severe crashes. Roadway deficiencies contribute to these conditions.
- 
Bicycle/Pedestrian Issues
 This symbol is located in areas where pedestrian and bicycle facilities are limited or non-existent. Barriers to pedestrian and bicycle travel also are shown with this symbol.



Vicinity Map



US 6/Wadsworth



Environmental Assessment



LOS - Levels of Service

LOS is a qualitative measure describing traffic operational conditions. LOS is based on speed and travel time, freedom to maneuver, traffic interruptions, comfort and convenience. In addition to travel volume, roadway LOS is affected by number of access points, lane width, number of lanes and percentage of large vehicles. The conditions characterizing roadway LOS are:



- Best operating condition considered free-flow
- Users are unaffected by presence of others



- Reasonably free-flowing conditions
- Some influence by others



- Constrained constant flow below speed limits
- Additional attention required by drivers to maintain safe operations
- Comfort levels of driver decline noticeably



- Approaching unstable flow
- High passing demand, limited passing capacity
- An acceptable condition for arterial and collector roadways in the community



- Unstable flow near capacity
- LOS E often quickly changes to LOS F because of disturbances in traffic flow



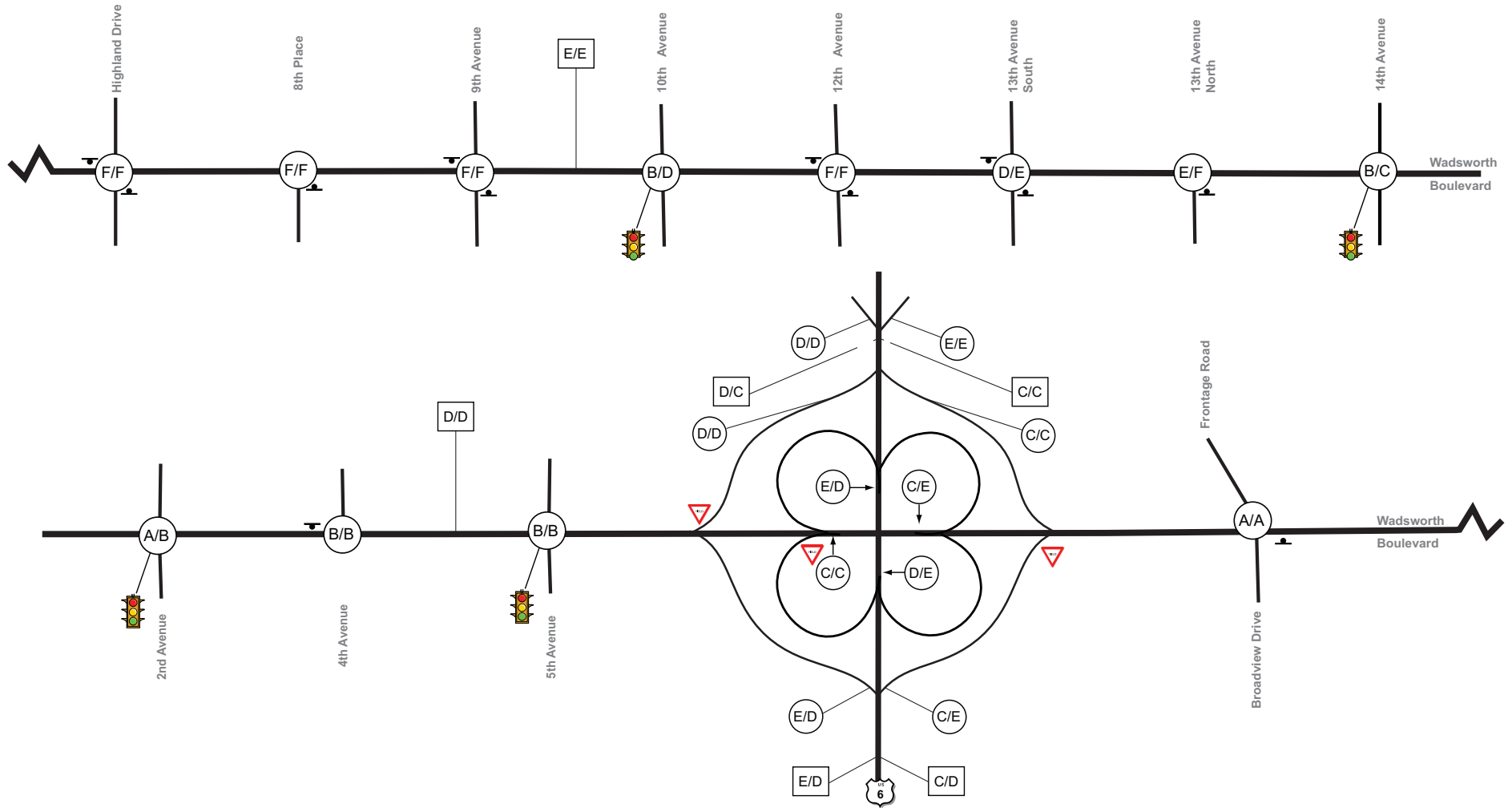
- Worst conditions with heavily congested flow, traffic demand exceeding capacity
- Poor travel time, low comfort and convenience

US 6/Wadsworth



Environmental
Assessment

Existing Levels of Service (June 2007)



LEGEND

	Signal		E/F = Mainline Level of Service AM/PM
	Stop Sign		E/F = Intersection, Weave, or Ramp Level of Service AM/PM
	Yield Sign		



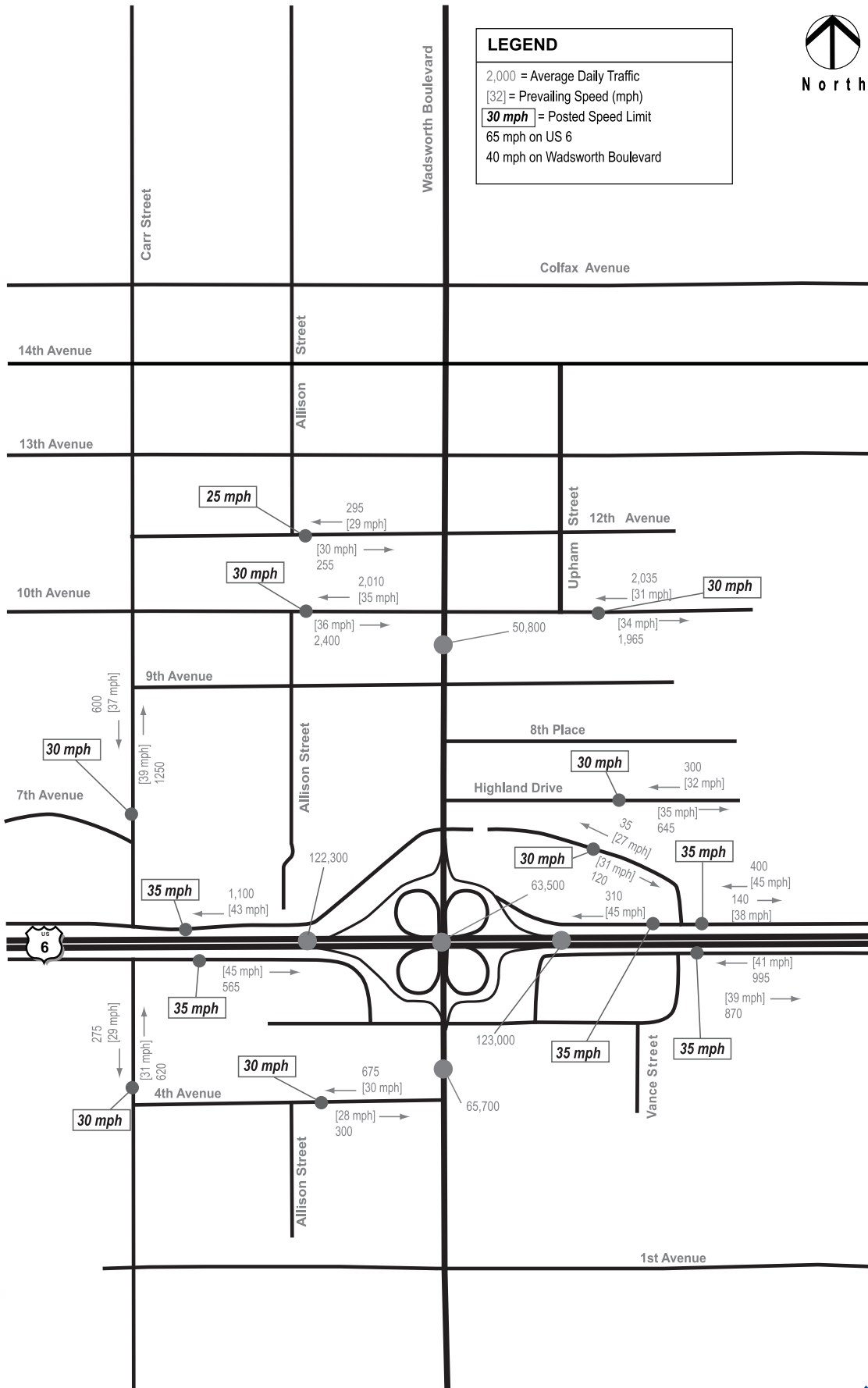
US 6/Wadsworth



Environmental Assessment



Neighborhood Traffic Counts and Speeds



US 6/Wadsworth

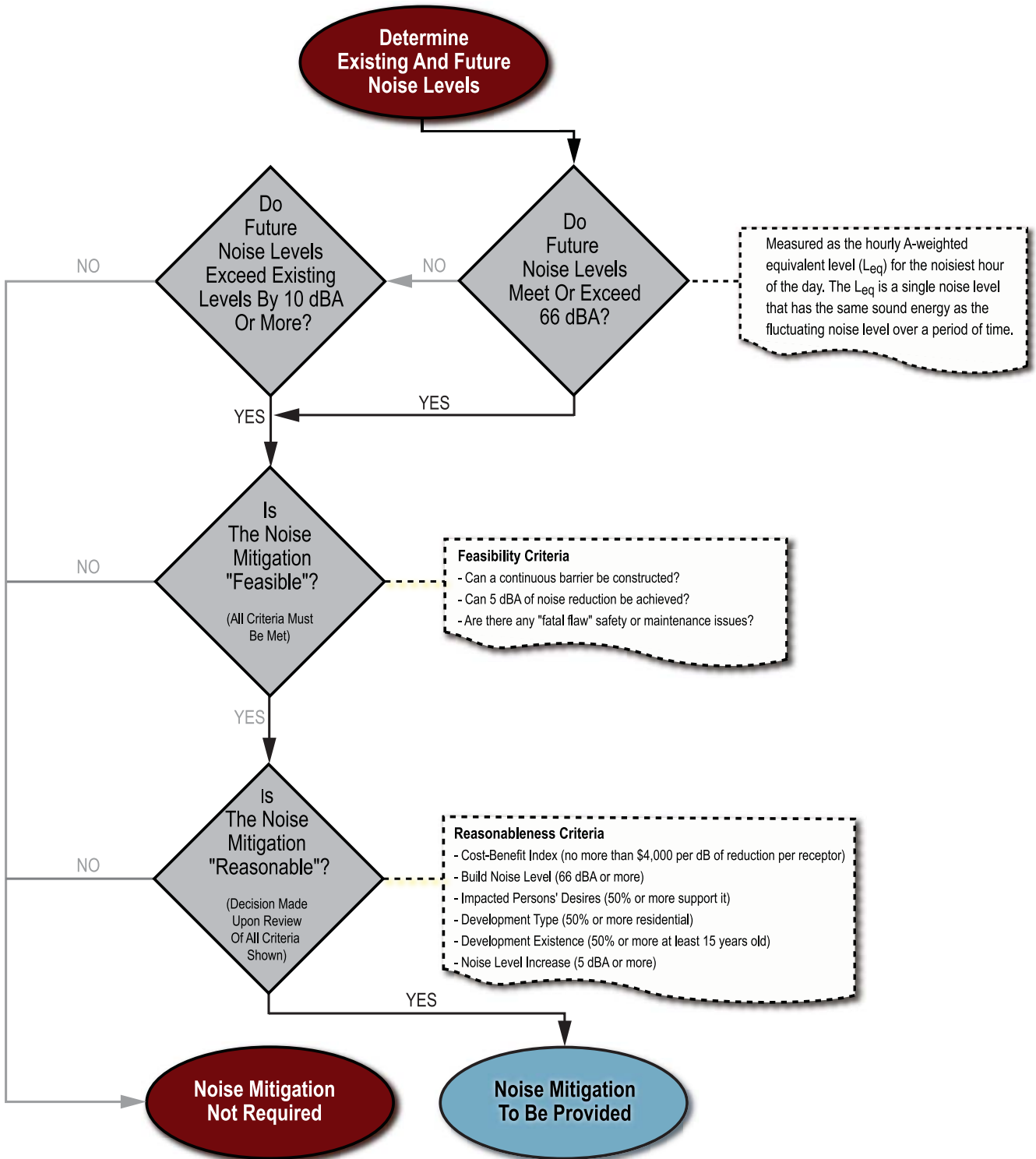


Environmental Assessment



CDOT Noise Analysis Procedure

Cdot Noise Analysis And Abatement Guidelines - December 1, 2002



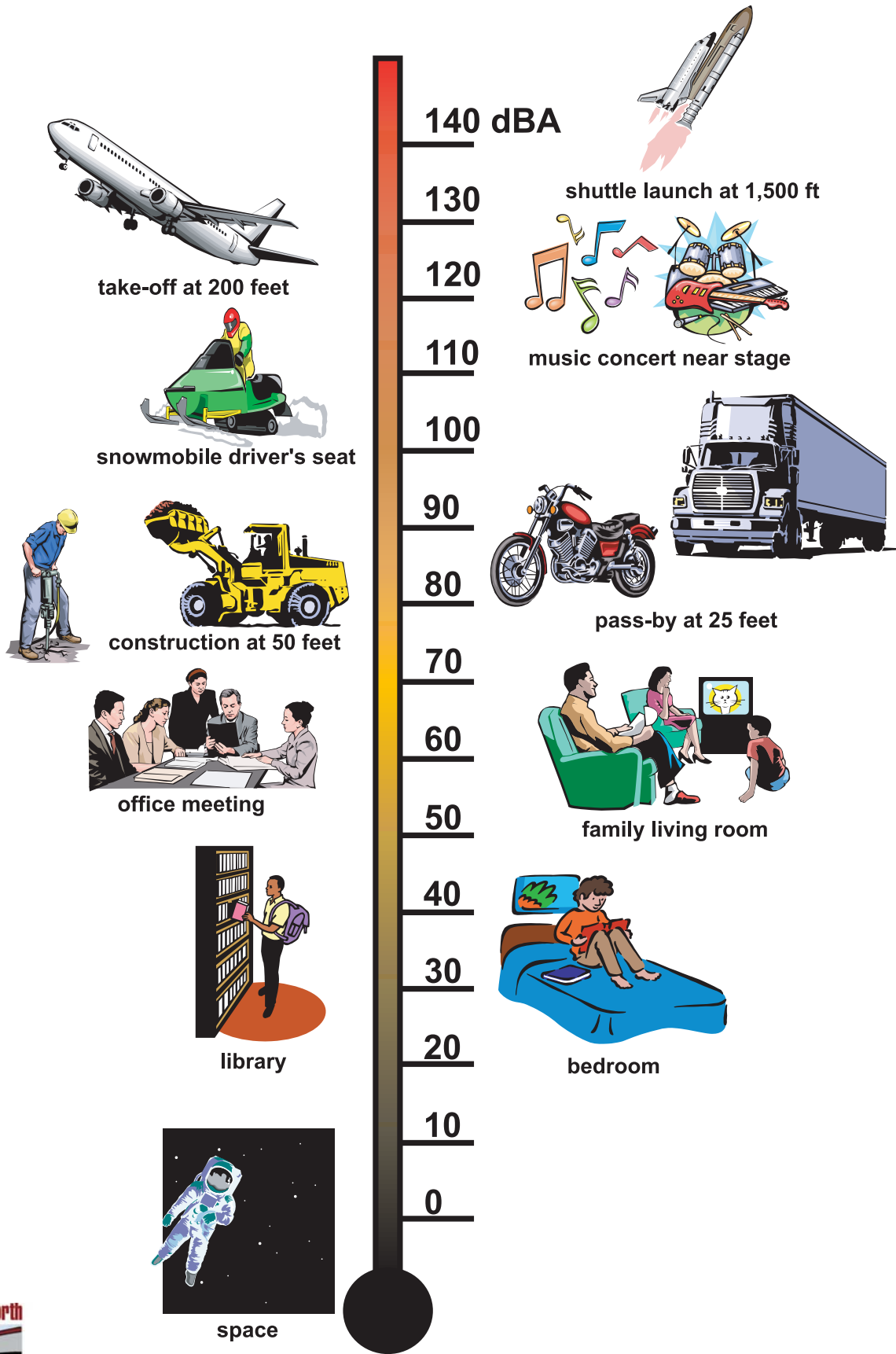
US 6/Wadsworth



Environmental Assessment



Sound Pressure Levels

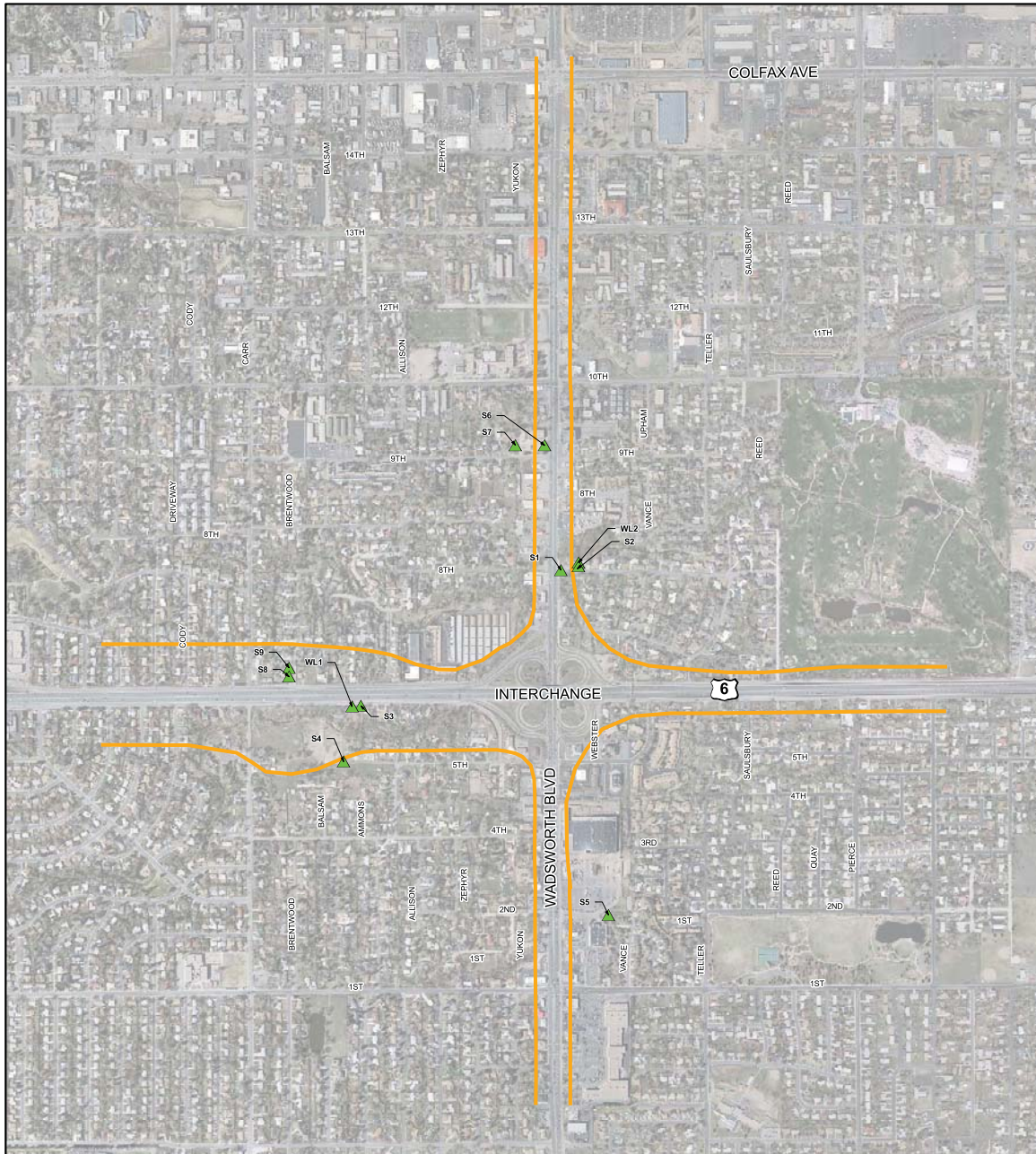


US 6/Wadsworth





Environmental Assessment

Existing Noise Contours (June 2007)



Legend

-  Noise Measurement Locations
-  Existing 66 dBA Noise Level Contours

US 6 and WADSWORTH ENVIRONMENTAL ASSESSMENT

SOURCE:
TNM, Hankard Environmental Inc

MAP CREATED: 07-24-07

0 250 500 1,000 1,500 Feet



US 6/Wadsworth



Environmental Resource Areas Considered

- Air Quality
- Archaeological Resources
- Energy
- Environmental Justice
(Low-Income or Minority Populations)
- Farmlands
- Floodplains
- Geology
- Hazardous Materials/Wastes
- Historic Properties
- Land Use
- Noise
- Noxious Weeds
- Paleontological Resources
- Relocation/Right-of-Way
- Pedestrians and Bicyclists
- Recreation
- Section 4(f) Resources
(Parks, Historic Properties, and Wildlife Refuges)
- Socioeconomics
- Soils
- Threatened or Endangered Species
- Transportation
- Vegetation
- Visual Quality / Aesthetics
- Water Quality/Water Resources
- Wetlands
- Wildlife and Fisheries

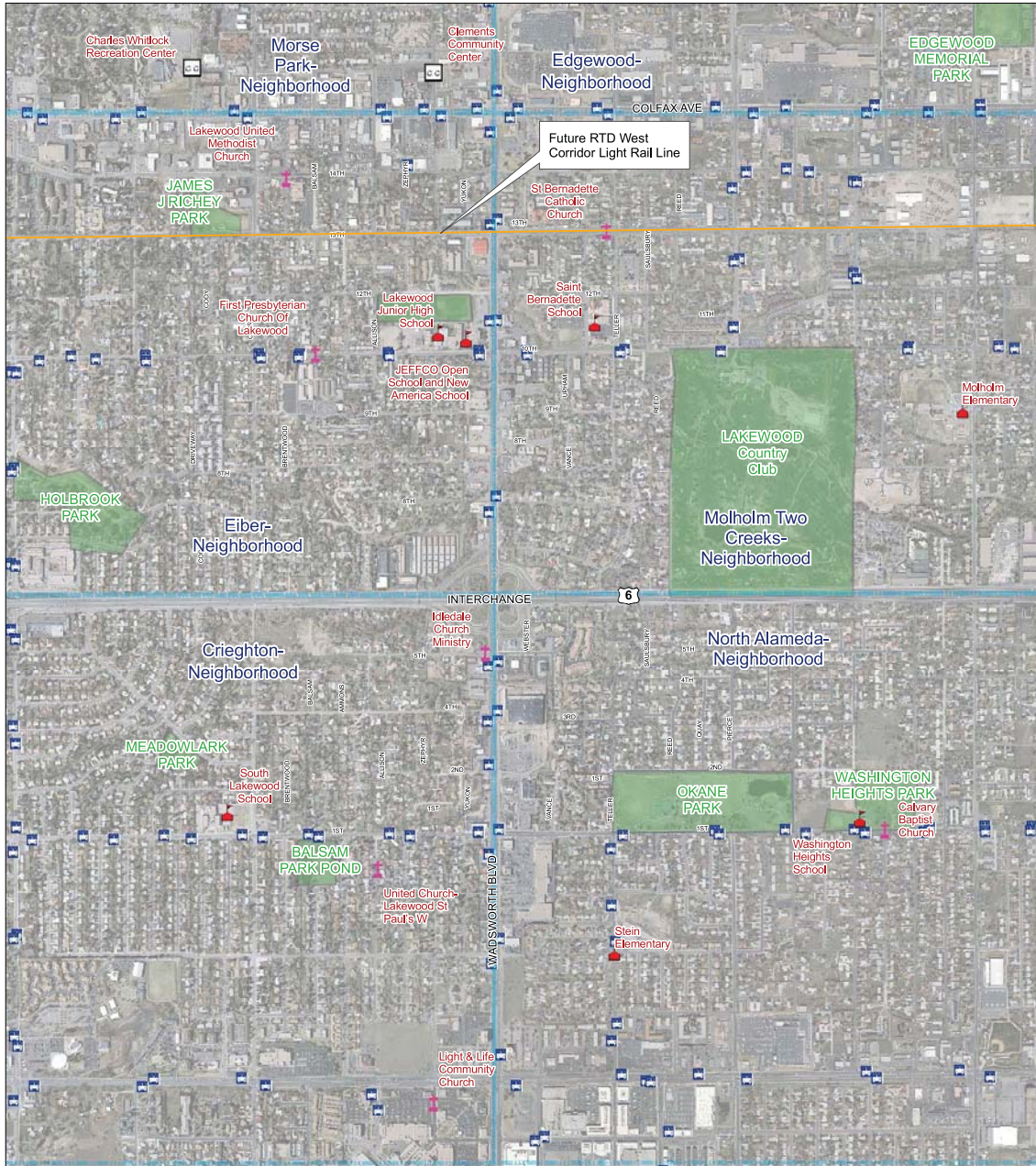
US 6/Wadsworth



Environmental
Assessment



Community Resources



Legend

Community Resources

- Church
- Community Center
- School
- Bus Stops
- Neighborhood Boundary
- Parks/Golf Course

US 6 and WADSWORTH ENVIRONMENTAL ASSESSMENT

SOURCE:
ESRI BASEMAP DATA

MAP CREATED: 08-20-07

0 250 500 1,000 1,500 Feet

N
↑

CH2M HILL

\\COBRA\GIS\PROJECTS\6TH_WADSWORTH\MAPFILES\WORKING\COMMUNITY_RESOURCES.MXD 8/20/2007 09:45:39

US 6/Wadsworth



**US 6 and Wadsworth
Environmental Assessment
Public Scoping Meeting**

August 21, 2007
Clements Community Center, Lakewood

Welcome

The mission of the Colorado Department of Transportation (CDOT) is to provide the best multi modal transportation system for Colorado that most effectively moves people, goods, and information.



Project Participants

Sponsoring Agencies

 Colorado Department of Transportation
 Federal Highway Administration

Cooperating Agency


Partnering Agency
 City of Lakewood

Consultant Team
 CH2MHILL
and subconsultants

Agenda

- Public scoping meeting format
- Project background and purpose
- Transportation issues
- National Environmental Policy Act (NEPA) process
 - Key decision milestones
 - Scoping process
 - Environmental resources

Scoping Meeting Format

- Presentation of study overview
- Open house information stations
- Information packets
- Tonight's goals:
 - Inform stakeholders of NEPA process
 - Collect stakeholder input on important issues

Information Packets

- Project Fact Sheet
- Information Sheets
 - Environmental Assessment Process
 - Study Schedule
 - Draft Purpose and Need
 - Noise
 - Environmental Resources
- Frequently Asked Questions
- Comment and Mailing List Form

Study Area

US 6
Wadsworth Boulevard
Study Corridor

Project Purpose

Improve safety and mobility for automobile, truck, transit, bicycle, and pedestrian travel at the US 6 and Wadsworth Boulevard interchange and along Wadsworth Boulevard between 3rd Avenue and 13th Avenue.

Transportation Needs and Issues

- Corridor fly-through

Project Schedule

- Typical CDOT Project Development Phases
 - Planning: varies
 - **Environmental Assessment (EA): 1 – 2 years**
 - Final Design: 6 – 12 months
 - Construction: 1 – 2 years
- **US 6 / Wadsworth Study**
 - Pilot streamlining project
 - Priority project for CDOT and City of Lakewood
 - Opportunity for additional funding support

Essential Elements of National Environmental Policy Act (NEPA)

- Scoping
- Purpose and Need
- Alternatives Analysis
- Identifying Impacts
- Determining Mitigation
- Documenting


Key Decision Milestones

We are Here

US 6 Wadsworth
Assessment

Scoping


- Early involvement with interested public and affected agencies
- Invite participation
- Determine the scope of the study
- Identify important vs. minor issues



US 6 Wadsworth
Assessment

Environmental Resources

- Early data collected to determine presence and context of environmental resources in the study area
- Study area is urban, and environmental resources are typical of those found in disturbed, urban areas
 - Human resources are important
 - Natural areas are limited



US 6 Wadsworth
Assessment

Resources Analyzed

▪ Air Quality	▪ Pedestrians and Bicyclists
▪ Archaeological Resources	▪ Recreation
▪ Energy	▪ Relocation / Right-of-Way
▪ Environmental Justice (Low-Income or Minority Populations)	▪ Section 4(f) Resources (Parks, Historic Properties, and Wildlife Refuges)
▪ Farmlands	▪ Socioeconomics
▪ Floodplains	▪ Soils
▪ Geology	▪ Threatened or Endangered Species
▪ Hazardous Materials	▪ Transportation
▪ Historic Properties	▪ Vegetation
▪ Land Use	▪ Visual Quality / Aesthetics
▪ Noise	▪ Water Quality / Water Resources
▪ Noxious Weeds	▪ Wetlands
▪ Paleontological Resources	▪ Wildlife and Fisheries




US 6 Wadsworth
Assessment

Questions and Comments

- Scoping packets contain comment sheets for you to provide comments on the scope of the EA
- Of particular interest are:
 - Purpose and Need
 - Issues important to you
 - Community groups and resources
 - What are we missing?
- Scoping period extends to August 31, 2007; public involvement will continue throughout study

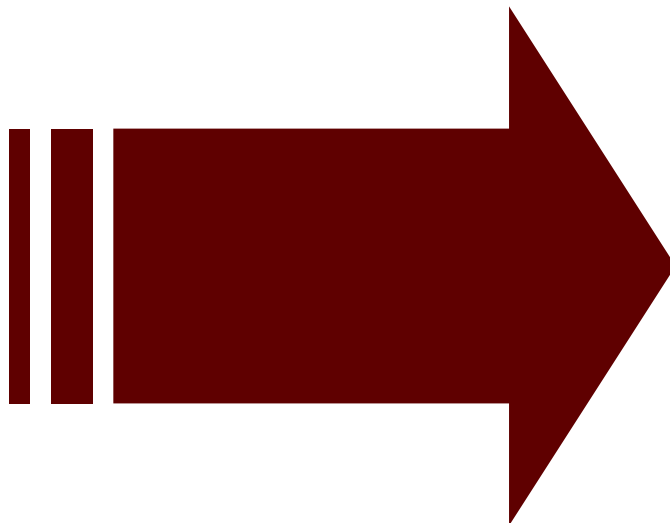
Visit www.US6Wadsworth.com





US 6 and Wadsworth Environmental Assessment Public Scoping Meeting

Lakewood Room





Welcome

to the
**US 6 and Wadsworth
Environmental Assessment
Public Scoping Meeting**

**August 21, 2007
Clements Community Center, Lakewood**

US 6/Wadsworth



**Environmental
Assessment**

