

EXHIBIT B UTILITY DESIGN SHEET

PROJECT

Utility Co. #	Conflict #
---------------	------------

Utility Owner: CSU - Water Public Private

SECTION TO BE COMPLETED PRIOR TO NEGOTIATION MEETING

Existing Condition

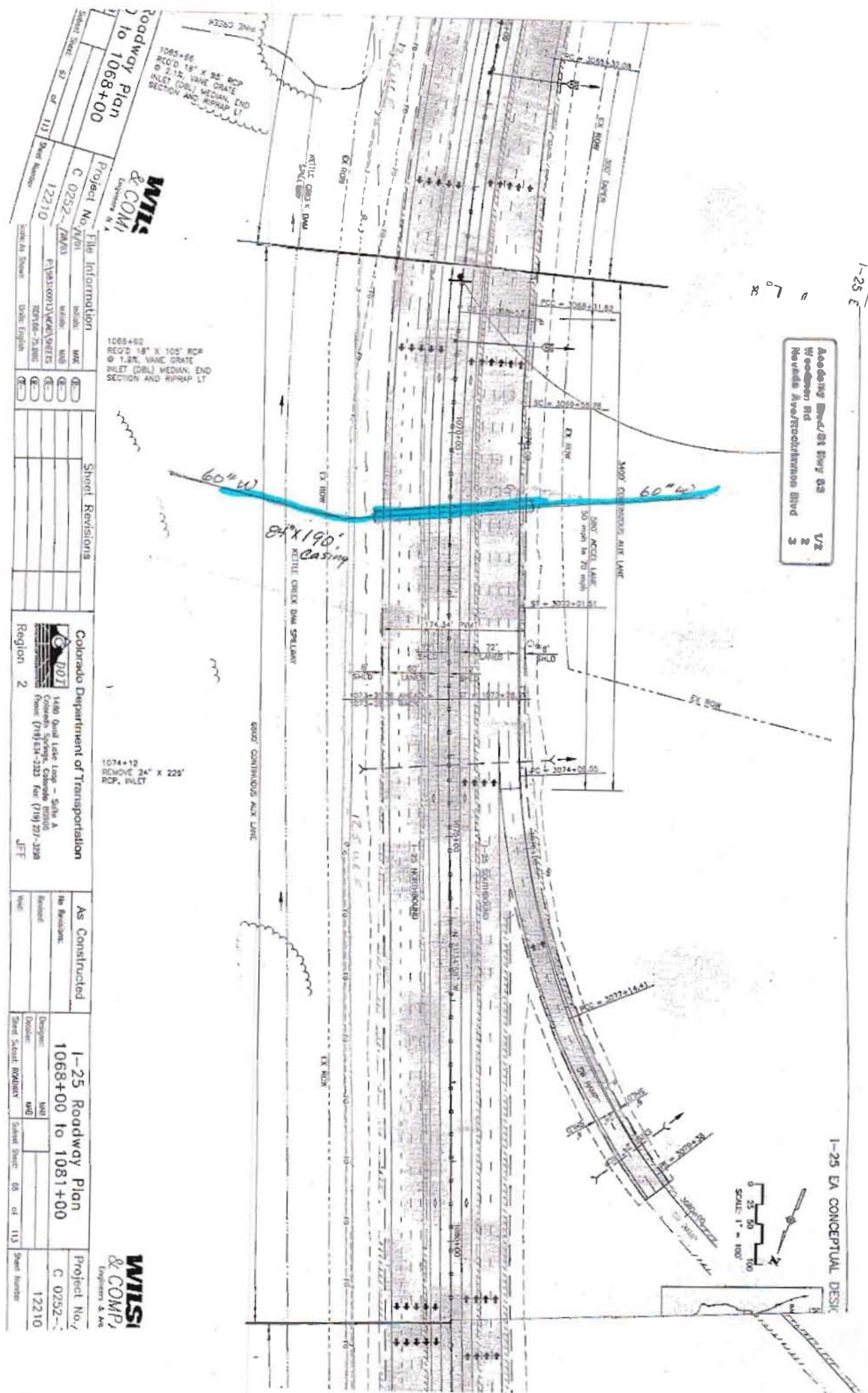
- General Location: Sta. 1023+ Crossing
- Utility type: Electric Gas Communications Water Sanitary Cable TV Irr. Canal
 Other
- Location by: Utility plat maps; Field located and surveyed: Yes No; Pothole: Yes No
If pothole, # _____ from: CDOT pothole or DBC pothole HCL used: _____
Station: _____ to Station: _____ Dist. from HCL: _____ Rt. / Lt. _____
- Utility size & type of materials: 60" Steel water line
- Environmental Concerns: mouse area
- Encased: No Yes, if so size & material: 84" x 190"
This section completed by DBC Rep.: _____ Date: _____

SECTION TO BE COMPLETED AT NEGOTIATION MEETING

Proposed Resolution

- Recommendation: left alone modified removed relocated upgraded abandoned in place
Conflict with: _____
- This utility may be modified/relocated to: _____
Station: _____ to Station: _____ Dist. from HCL: _____ Rt./Lt. _____
- Utility in: CDOT ROW other public ROW Easement (attach copy) other _____
- Who will do the Utility Relocation Plan: Utility Company (UC) Design/Build Contractor (DBC)
- Who will do the construction: Utility Company (UC) Design/Build Contractor (DBC)
- UC to perform inspection? No Yes, if so conditions: _____
- Number of days required for prior notification by DBC for construction by UC: _____ days
- Number of days required by UC or DBC to complete Utility Relocation Plan: _____ days; Construction: _____ days.
- Any construction details unique to this location? No Yes, if yes describe: _____
- Utility can be disconnected for: _____ days/hours.
- Other proposed action: _____
- Contractor Drawings confirming conflict must be attached
This section completed by: Utility Co. _____ Date: _____ DBC _____ Date: _____

Accessory Road/St Hwy 83
 Woodson Rd
 Nevada Ave/Reddickman Blvd
 U2
 2
 3



Sheet No. 03 of 113	Project No. N/A	File Information	1068+60 RCD @ 2.12' VANE GRATE INLET (DBL) MEDIAN, END SECTION AND RIPRAP LT
Sheet No. 03 of 113	Project No. N/A	Sheet Revisions	1068+66 RCD @ 2.12' VANE GRATE INLET (DBL) MEDIAN, END SECTION AND RIPRAP LT
Scale As Shown	Scale As Shown	Colorado Department of Transportation	1074+12 REMOVE 24' X 22' INLET
Unit: English	Unit: English	1480 Quail Lake Loop - Site A Colorado Springs, Colorado 80906 Phone: (719) 521-2333 Fax: (719) 271-2398	1074+12 REMOVE 24' X 22' INLET
		Region 2	
		As Constructed	
		1-25 Roadway Plan	
		1068+00 to 1081+00	
		Project No. /	
		C 0752- /	
		12210	
		Sheet No. /	
		03 of 113	

WISI & COMPANY
 Engineers & Architects

WISI & COMPANY
 Engineers & Architects