

INDEX OF SHEETS
 SHEET NO. 1 TITLE SHEET.
 2 PLAN SHEET

COLORADO DEPARTMENT OF HIGHWAYS

PLAN AND PROFILE OF PROPOSED
FEDERAL AID PROJECT I 25-2 (44)150
 STATE HIGHWAY NO. 25
 EL PASO COUNTY

FEDERAL ROAD DIVISION NO.	DISTRICT	PROJ. NO.	SHEET NO.	TOTAL SHEETS
9	2	I 25-2 (44)150	1	

RIGHT OF WAY

SO ENTRANCE TO AIR ACADEMY

REVISIONS

CONVENTIONAL SIGNS

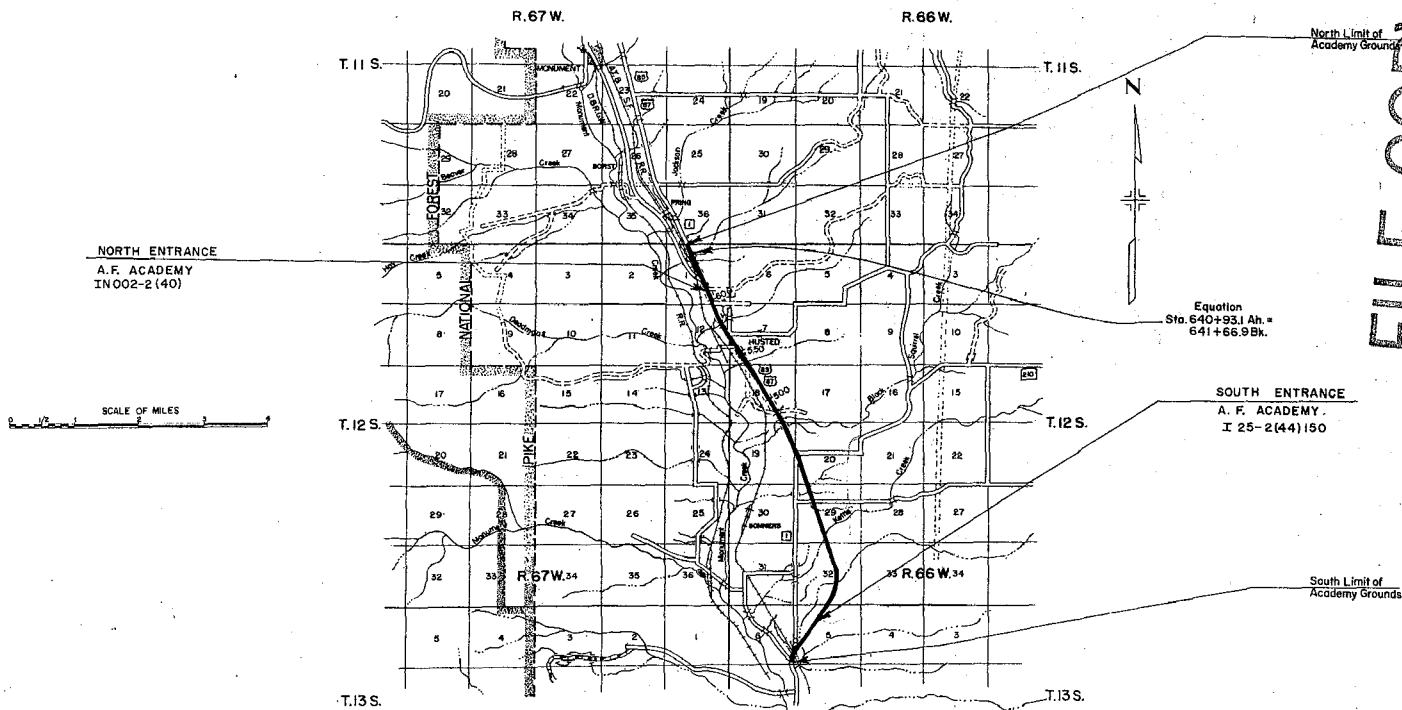
CENTER LINE	PLAN SHEET	TITLE SHEET
RIGHT OF WAY LINE	R.O.W. MARKER	
COUNTY LINE		
TOWNSHIP OR RANGE LINE		
LAND LINES	SECTION LINE	1/4 SECTION LINE
RAILROAD	TITLE SHEET	PLAN SHEET
BARBED WIRE FENCE		
COMBINATION WIRE FENCE		
SNOW FENCE		
TELEPHONE & TELEGRAPH LINES		
POWER LINE		
DETOUR		
PRESENT ROAD (Plan Sheets)		

SCALES OF ORIGINAL DRAWINGS

ON PLAN, 1 IN. = 100 FT.
 ON PROFILE, 1 IN. = 100 FT. HORIZONTAL
 1 IN. = 10 FT. VERTICAL
 GRADE LINE ON PROFILE IS SHOWN AS GRADE OF FINISHED ROAD
 GROSS LENGTH OF PROJECT
 NET LENGTH OF PROJECT

RIGHT OF WAY

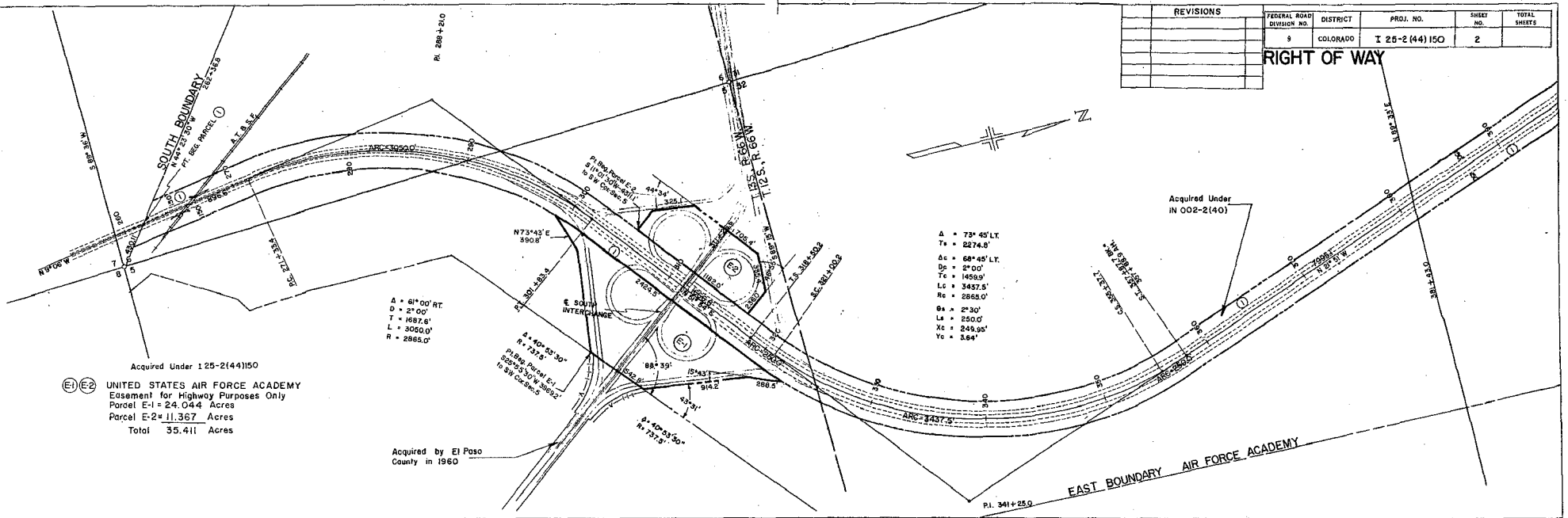
EASEMENT FOR HIGHWAY PURPOSES ONLY



FILE COPY
DO NOT REMOVE

REVISIONS		FEDERAL ROAD DIVISION NO.	DISTRICT	PROJ. NO.	SHEET NO.	TOTAL SHEETS
		9	COLORADO	I 25-2 (44) 150	2	

RIGHT OF WAY



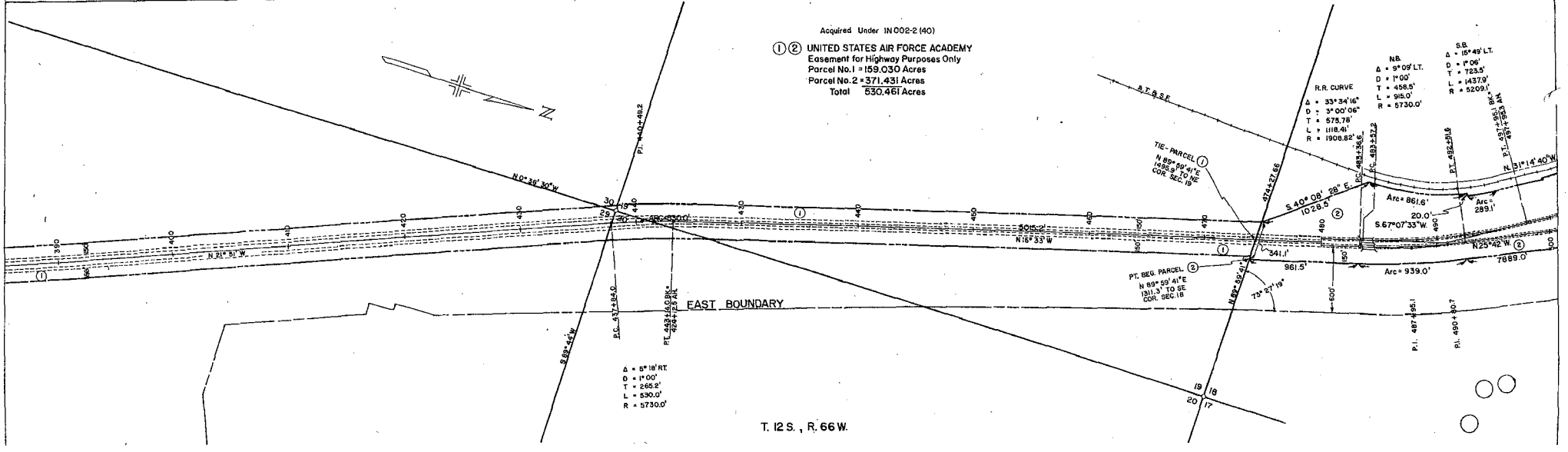
Δ = 61°00' RT.
D = 2°00'
T = 1687.6'
L = 3050.0'
R = 2865.0'

Δ = 73°45' LT.
T = 5274.8'
Δc = 68°45' LT.
Dc = 2°00'
Tc = 1469.8'
Lc = 3457.5'
Rc = 2865.0'
Θa = 2°30'
La = 250.0'
Xc = 249.55'
Yc = 3.64'

Acquired Under 125-2(44)150
 (E) (E2) UNITED STATES AIR FORCE ACADEMY
 Easement for Highway Purposes Only
 Parcel E-1 = 24.044 Acres
 Parcel E-2 = 11.367 Acres
 Total 35.411 Acres

Acquired by El Paso County in 1960

Acquired Under
IN 002-2(40)



Acquired Under IN 002-2(40)
 (1) (2) UNITED STATES AIR FORCE ACADEMY
 Easement for Highway Purposes Only
 Parcel No. 1 = 159.030 Acres
 Parcel No. 2 = 371.431 Acres
 Total 530.461 Acres

SS
Δ = 15°49' LT.
D = 1°06'
T = 723.5'
L = 1437.9'
R = 5209.1'

R.R. CURVE
Δ = 33°34'16"
D = 3°00'06"
T = 575.78'
L = 1118.41'
R = 1908.82'

Δ = 5°18' RT.
D = 1°00'
T = 265.5'
L = 530.0'
R = 5730.0'

T. 12 S., R. 66 W.