

COLORADO DEPARTMENT OF HIGHWAYS

PLAN AND PROFILE OF PROPOSED FEDERAL AID PROJECT NO. I.N. 002-2 (40) STATE HIGHWAY NO. 1 EL PASO COUNTY

FEDERAL ROAD DIVISION NO.	DISTRICT	PROJECT NO.	SHEET NO.
9	COLORADO	I.N. 002-2 (40)	1

RIGHT OF WAY

INDEX OF SHEETS
SHEET NO. 1 TITLE SHEET.
2-3 PLAN AND PROFILE SHEETS SHOWING R.O.W.

CONVENTIONAL SIGNS

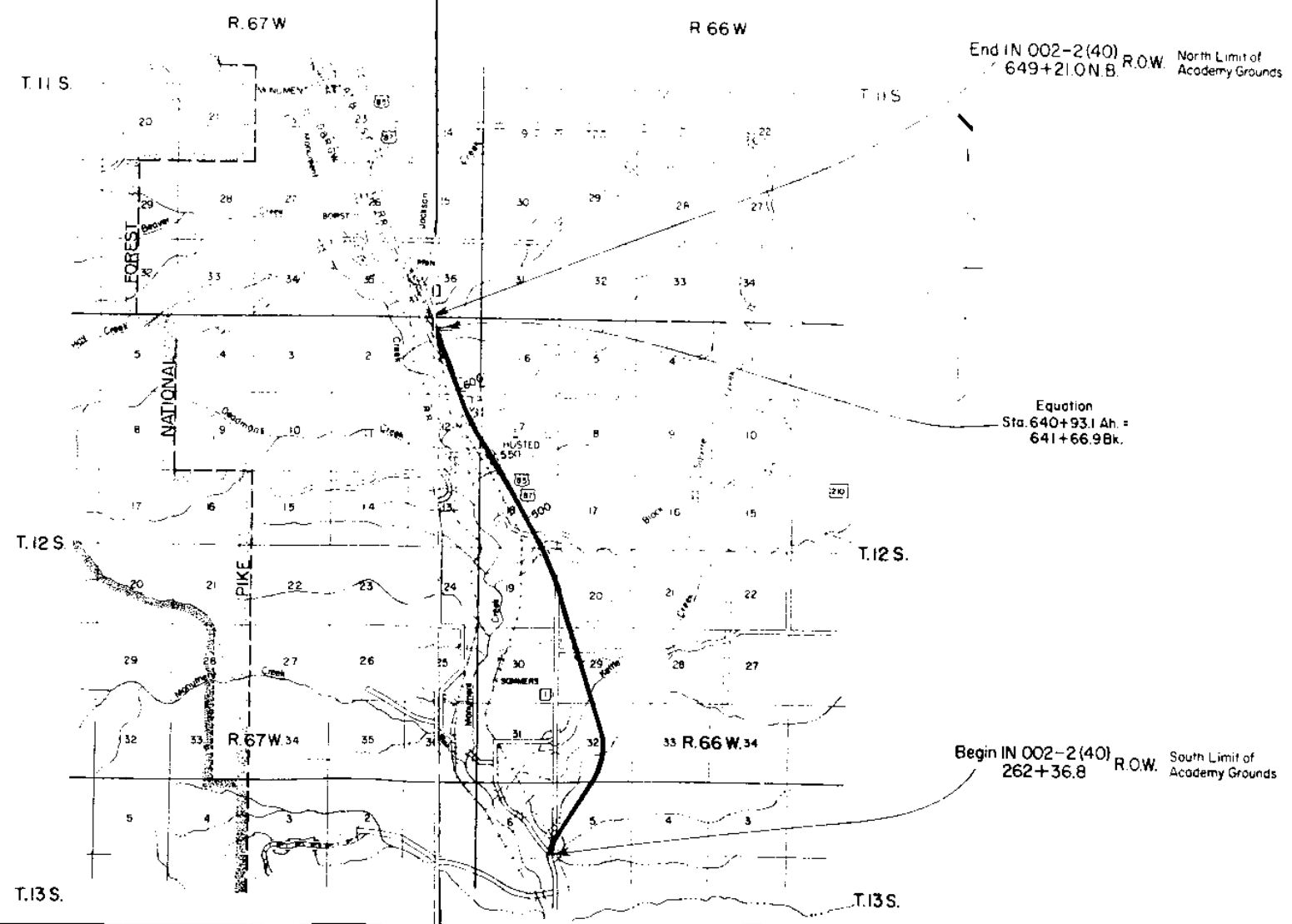
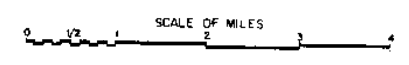
CENTER LINE	—+— PLAN SHEET	—+— TITLE SHEET
RIGHT OF WAY LINE	—+— ROW MARKER	
COUNTY LINE	—+—	
TOWNSHIP OR RANGE LINE	—+—	
LAND LINES	—+— SECTION LINE	—+— 1/4 SECTION LINE
RAILROAD	—+— TITLE SHEET	—+— PLAN SHEET
BARBED WIRE FENCE	—+—	
COMBINATION WIRE FENCE	—+—	
SNOW FENCE	—+—	
TELEPHONE & TELEGRAPH LINES	—+—	
POWER LINE	—+—	
DETOUR	—+—	
PRESENT ROAD (Plan Sheets)	—+—	

SCALES OF ORIGINAL DRAWINGS

ON PLAN 1 IN. = 100 FT.
ON PROFILE 1 IN. = 10 FT. HORIZONTAL
1 IN. = 10 FT. VERTICAL

GRADE LINE ON PROFILE IS SHOWN AS GRADE OF FINISHED ROAD
GROSS LENGTH OF PROJECT
NET LENGTH OF PROJECT

RIGHT OF WAY EASEMENT FOR HIGHWAY PURPOSES ONLY



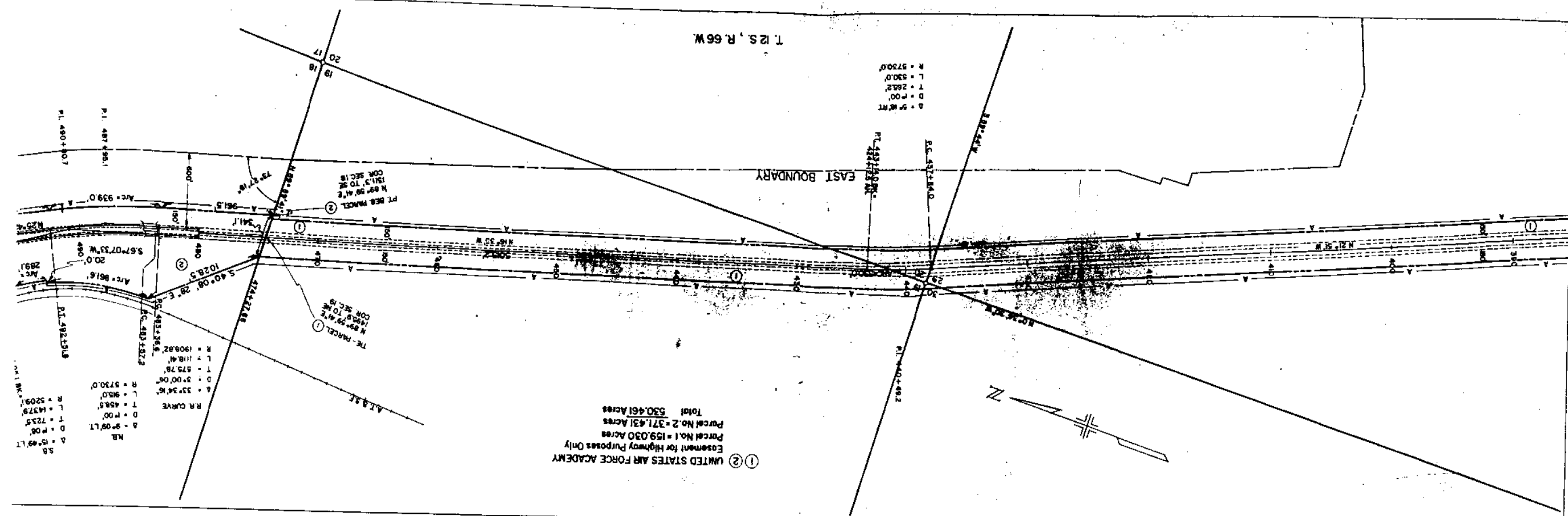
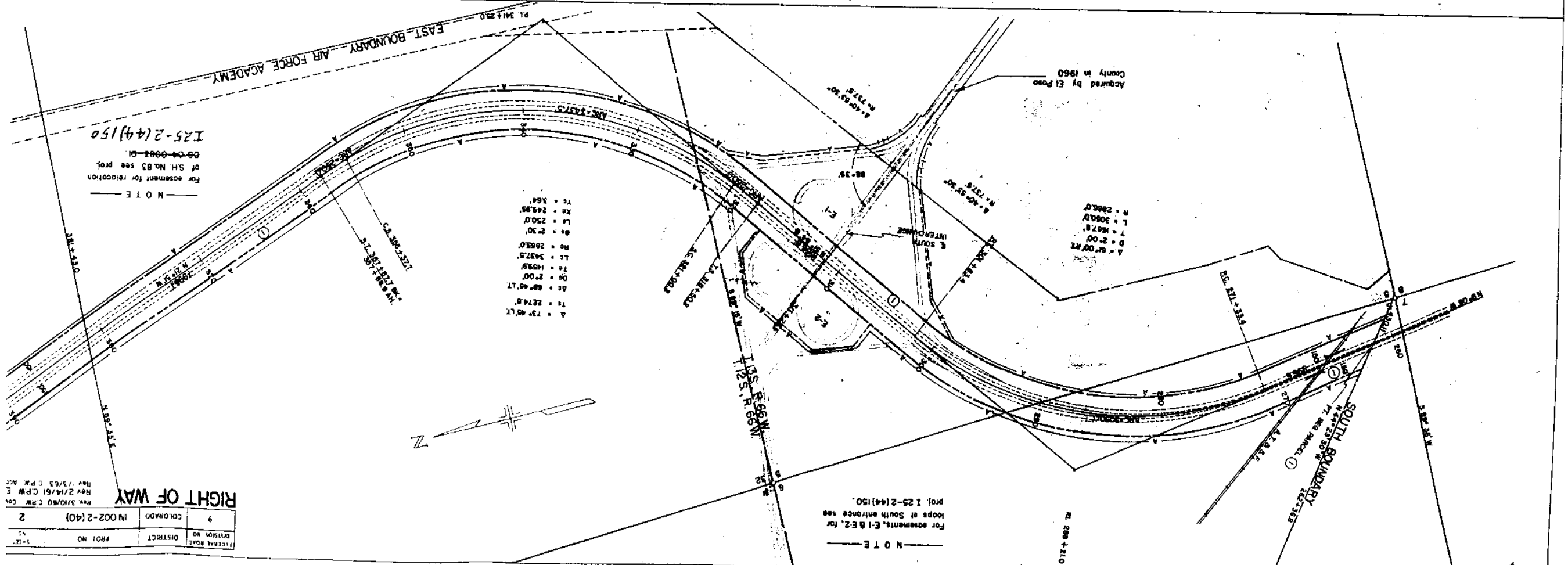
FEDERAL ROAD DISTRICT	PROJ NO	2
DIVISION NO	IN 002-2(40)	9
COLORADO		

REV 3/30/60 C.P.M. CO.
REV 2/18/61 C.P.M. E
REV 7/5/63 C.P.M. ACC

RIGHT OF WAY

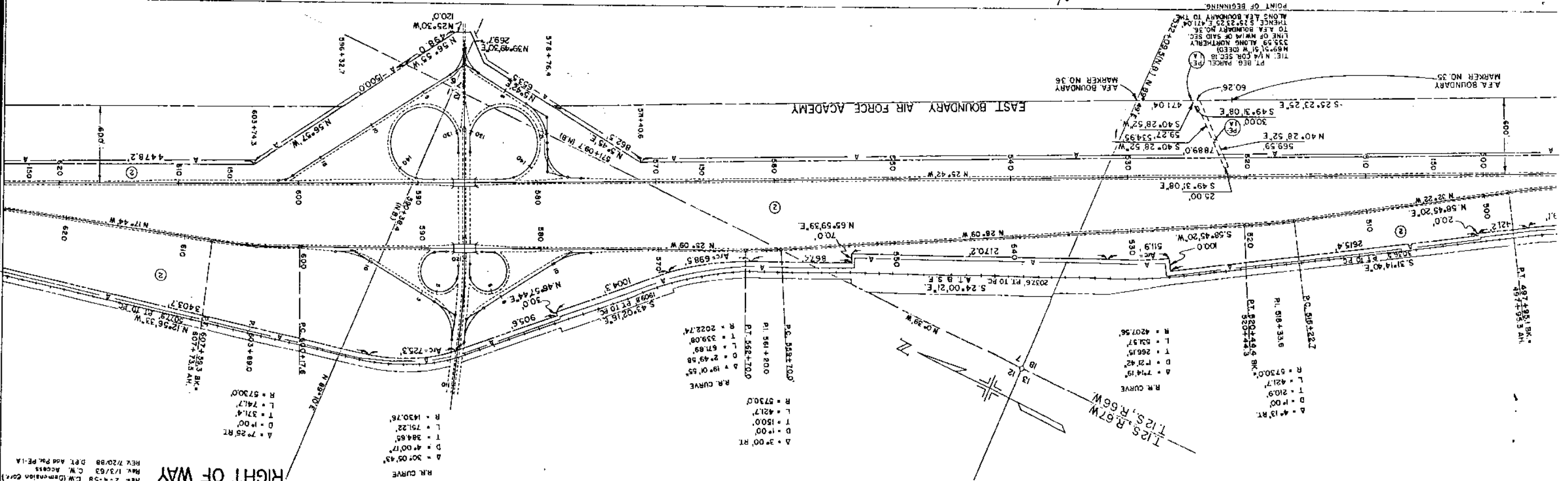
NOTE
For easement for relocation
of S.H. No. 83 see proj.
09-04-0082-01

I 25-2(44) 150



FEDERAL ROAD DISTRICT	PROJ. NO.	SHEET NO.	TOTAL SHEETS
9 COLORADO	IN 002-2(40)	3	

REV 7/20/88 DRT Add Pk PE-1A
 Max 1/3/83 C.W. RECORDS



UNITED STATES AIR FORCE ACADEMY
 Easement for Utility Purposes Only
 0.366 Acres

