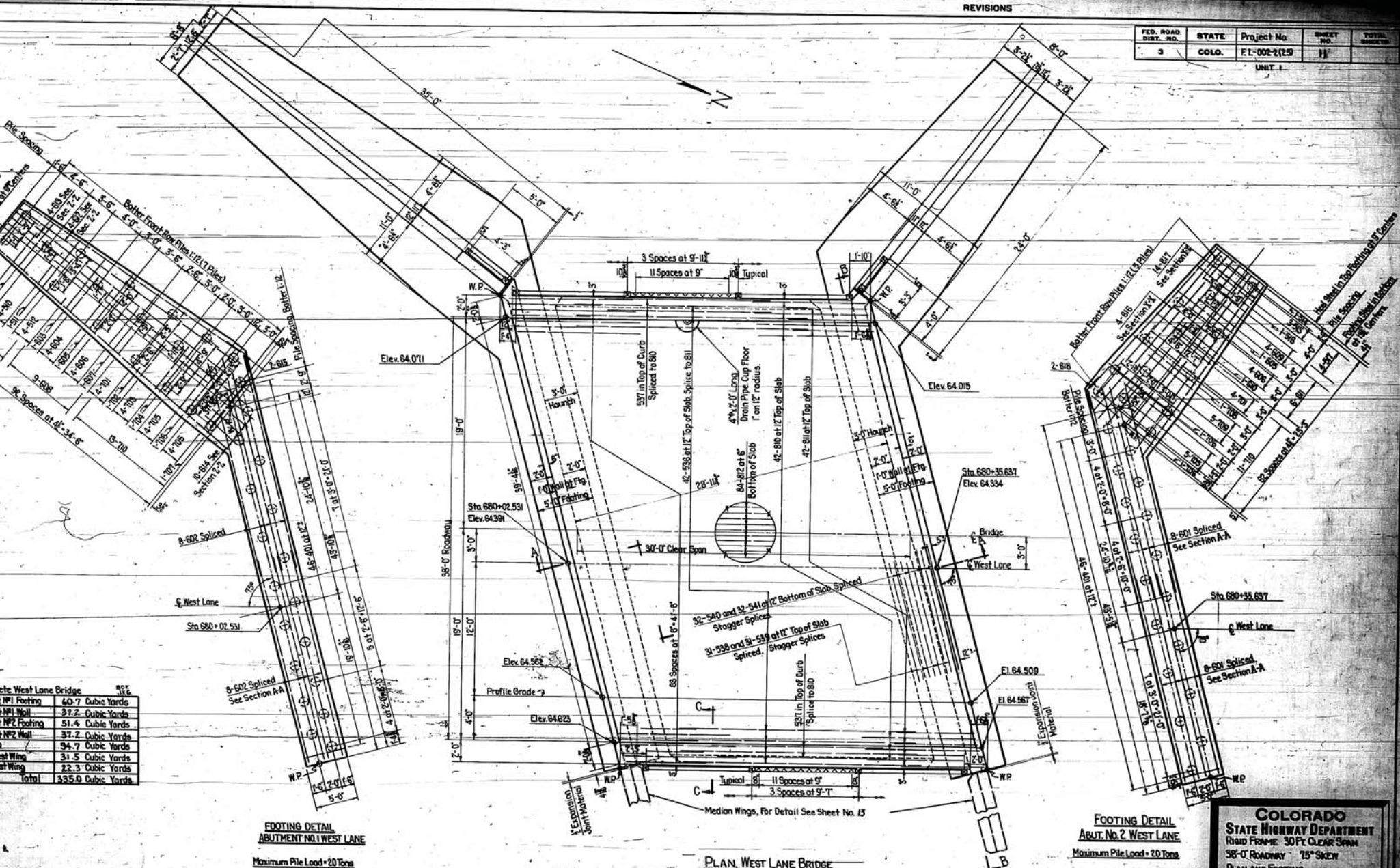


REVISIONS

FED. ROAD DIST. NO.	STATE	Project No.	SHEET NO.	TOTAL SHEETS
3	COLO.	FI-002-2(25)	11	

UNIT 1



Item	Quantity
West Lane Bridge	
NP1 Footing	60.7 Cubic Yards
NP1 Wall	37.2 Cubic Yards
NP2 Footing	51.4 Cubic Yards
NP2 Wall	37.2 Cubic Yards
NP3 Footing	94.7 Cubic Yards
NP3 Wall	31.5 Cubic Yards
NP4 Footing	22.3 Cubic Yards
NP4 Wall	22.3 Cubic Yards
Total	335.0 Cubic Yards

FOOTING DETAIL
ABUTMENT NO. 1 WEST LANE
Maximum Pile Load = 20 Tons

FOOTING DETAIL
ABUT. NO. 2 WEST LANE
Maximum Pile Load = 20 Tons

PLAN, WEST LANE BRIDGE

Note:
Stream bed to be back filled with Class I Structure Backfill and topped to Elevation of bottom of footings before driving footing piling.

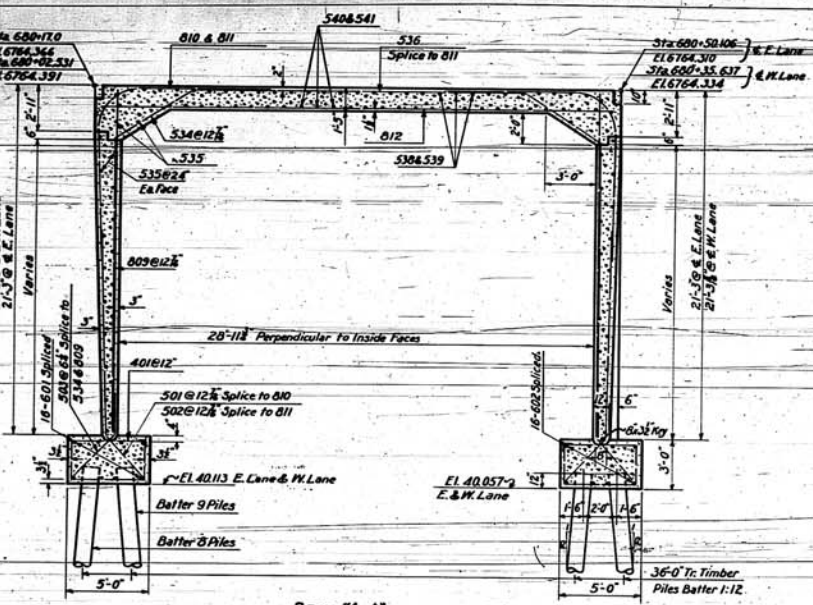
All reinforcing dimensions to $\bar{\phi}$ bar unless otherwise noted.

COLORADO STATE HIGHWAY DEPARTMENT
RIGID FRAME - 30 FT CLEAR SPAN
36'-0" ROADWAY 75° SKEW
PLAN AND FOOTING
DETAILS FOR WEST LANE
 Arroyo, Jackson Creek
 Sta. 680+02.531 to 680+35.637
 Designed by: [Signature] Approved by: [Signature]
 Made by: S.A.R. Checked by: [Signature]

STRUCTURE NO. 11-T-11

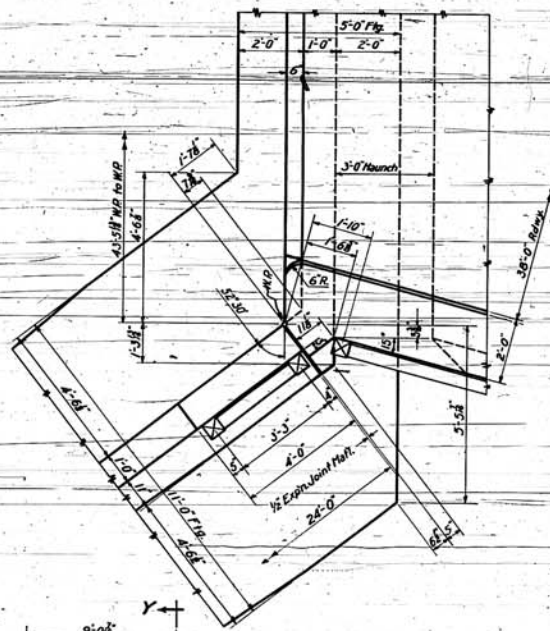
FED. ROAD DIST. NO.	STATE	PROJECT NO.	SHEET NO.
3	COLO.	FI-002-2 (23)	13

Unit 1

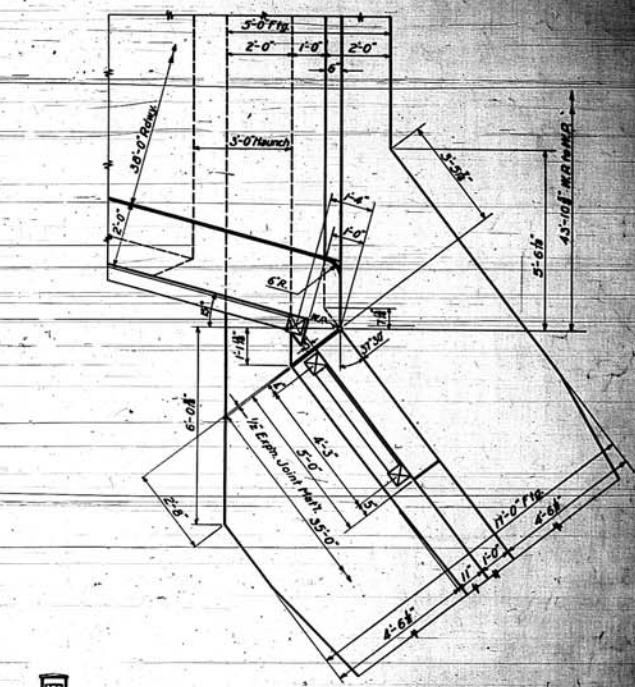


SECT "A-A"

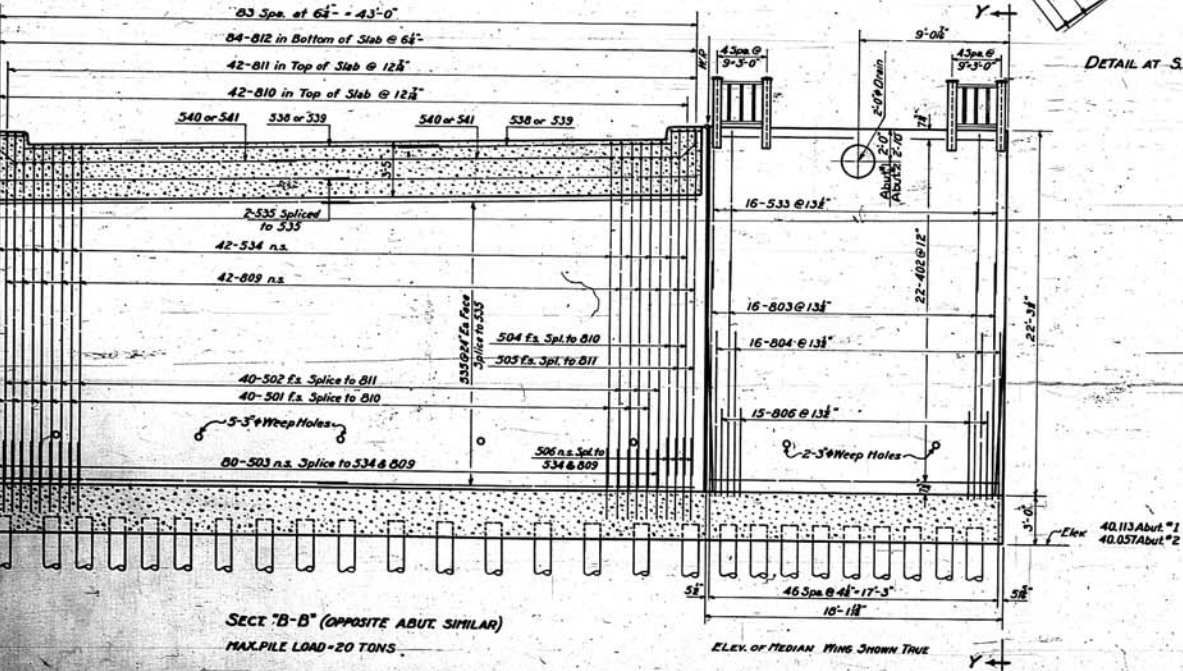
Note: Bars and dimensions shown on one side only also apply on other side unless otherwise noted.



DETAIL AT SE. & N.W. WING



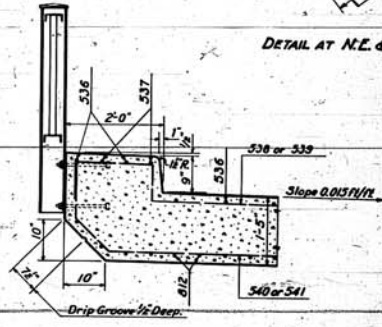
DETAIL AT NE. & S.W. WING



SECT "B-B" (OPPOSITE ABUT. SIMILAR)

MAX. PILE LOAD - 20 TONS

ELEV. OF MEDIAN WING SHOWN TRUE



SECT "C-C"

LOADING DATA
 LIVE LOAD - A.S.H.T.O. CLASS II
 DEAD LOAD - 15 LB. PER SQ. FT.
 WIND LOAD - 30 LB. PER SQ. FT.
 IMPACT - 10% OF LIVE LOAD

ENGINEERING DATA
 28,000 PSI COMP. STRENGTH
 60,000 PSI TENS. STRENGTH
 10% ELONG. AT BREAK
 10% ELONG. AT YIELD
 10% ELONG. AT YIELD

All reinf. dimensions to c. of bar unless otherwise indicated.

STRUCTURE NO. H-17-N & H-17-A1

COLORADO
 STATE HIGHWAY DEPARTMENT
 30'-0" CLEAR SPAN
 RIGID FRAME
 38'-0" ROADWAY 75' SKIRM
 SECTIONS & WING DETAILS
 APPROX. SECTION C-C
 10% ELONG. AT YIELD
 10% ELONG. AT YIELD
 10% ELONG. AT YIELD