

AS BUILT DRAWINGS
APRIL 30, 1958

REVISION: ADDED CONCRETE FINISH NOTE 12-14-58 R.R.A.
REVISION: CHANGED BAR QUANTITIES 2-29-57 J.V.G.

FED. ROAD DIST. NO.	DIST.	PROJ. NO.	SHEET NO.
9	COLD.	1N002-2(40)	10

SUMMARY OF QUANTITIES

ITEM No.	ITEM	UNIT	SUPER	ABT. A'	PIER	ABT. B'	TOTAL	2-APPR. SLABS
14g	DRY COMMON EXCAVATION (STR.)	CUYD	250	0.5	266	604		
16a	STRUCTURE BACKFILL (CLASS 1)	CUYD	156	56	173	385		
16c	MECHANICAL TAMPING	HR.	20	8	22	50		
34d	PLAN MIXED ASPHALTIC SURFACING	TON	10.5			10.5	18	
46a	CLASS 'A' CONCRETE	CUYD	251	111	65	134	561	62
46b	CLASS 'P' CONCRETE - BEAM	CUYD	374				374	
47	REINFORCING STEEL (+ 1% OVERRUN)	LB.	7650	15590	8595	21835	9418	
48	STRUCTURAL STEEL (+ 1/2" FOR PAINT.)	LB.	5100	10150	6100	16350	16350	
61a	STEEL PILING 12 1/2" O.D. 1/4" WALL	LINEAL FT.	541	351	503	1395		
90c	SHEET ZINC (32 GA. PER SQ. FT.)	LB.	232	54	46	332	332	
90d	HARD LEAD (3/4" THICK)	SQ. FT.		10.2		10.2		
90e	FELT (3/4" THICK)	SQ. FT.		15.0		15.0		
90f	ELECTRICAL CONDUIT 2" DIA.	LINEAL FT.	400	30	35	465	465	
90g	1/2" EXPANSION JOINT MATERIAL	LINEAL FT.		93		93	93	
90h	WATER PROOFING COAT	SQ. YD.						

SUMMARY OF QUANTITIES - REFERENCE NOTES

- * STONE BACKFILL INCLUDED
- o PRESTRESSING STEEL WITH ANCHORS INCLUDED WITH BID PRICE FOR CLASS 'P' CONCRETE (160 UNITS REQUIRED IN GIRDERS)
- Δ INCLUDES STEEL RAILING, PLATES, ANCHOR BOLTS, ANCHOR BARS AND BEARINGS.
- * INCLUDES WITH BID PRICE FOR CLASS 'A' CONCRETE.
- NOTE: ITEM 47 DOES NOT INCLUDE PRESTRESSING STEEL.

DESIGN SPECIFICATIONS:

1953 A.A.S.H.O. WITH 1953 AND 1954 AMENDMENTS.
LIVE LOAD: H20-S16-44
WT 20000 P.S.I.
WEIGHT OF EARTH: 120 LBS PER CU. FT.
EQUIVALENT FLUID PRESSURE: 50 LBS PER CU. FT.
MAX. ALLOWABLE LOAD PER STEEL PIPE PILE 12" DIA. FILLED WITH CONCRETE 3000 P.S.I. = 47 TONS.

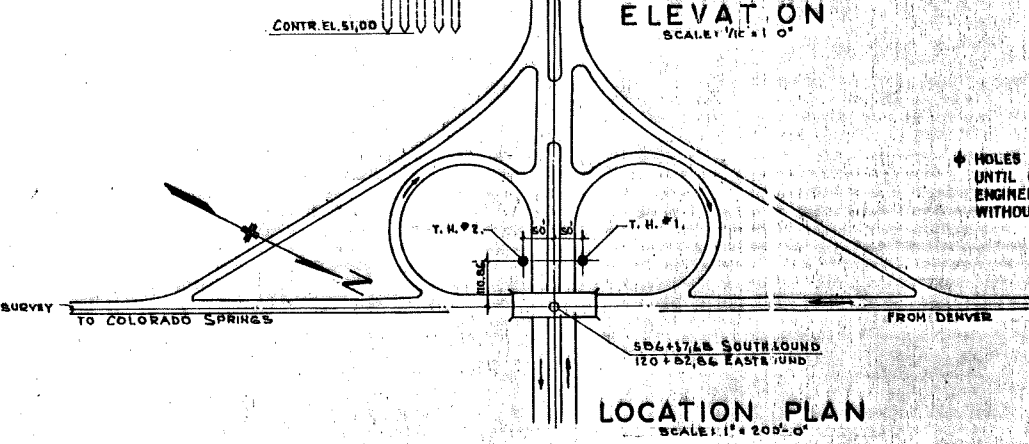
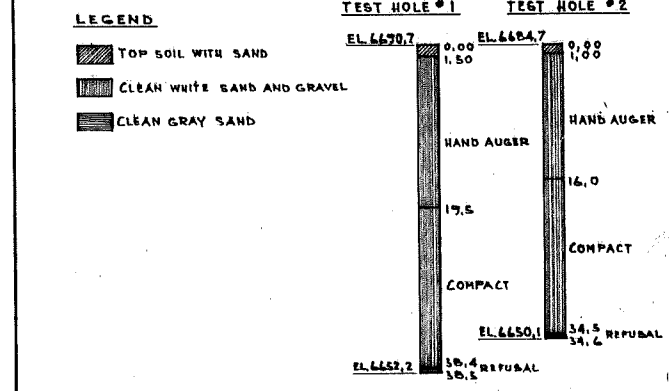
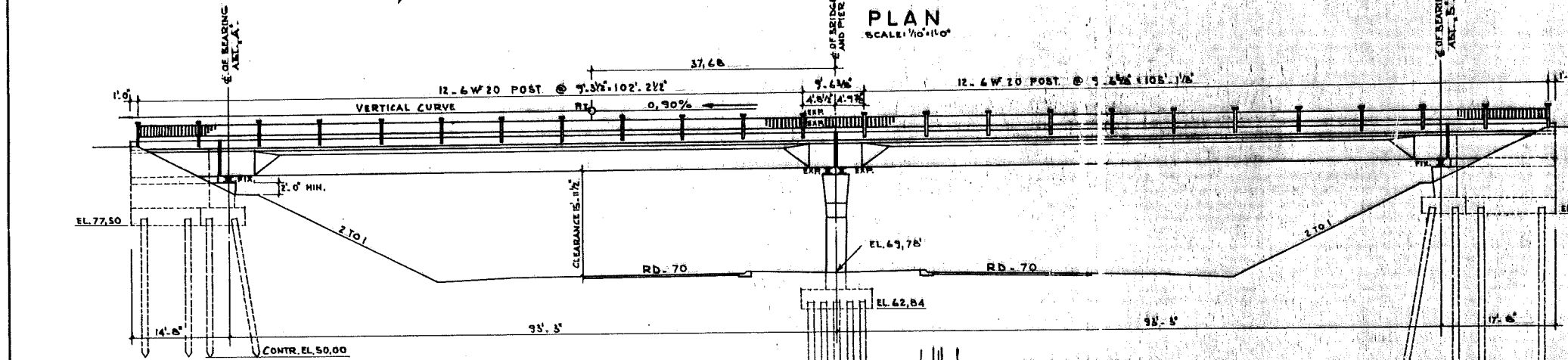
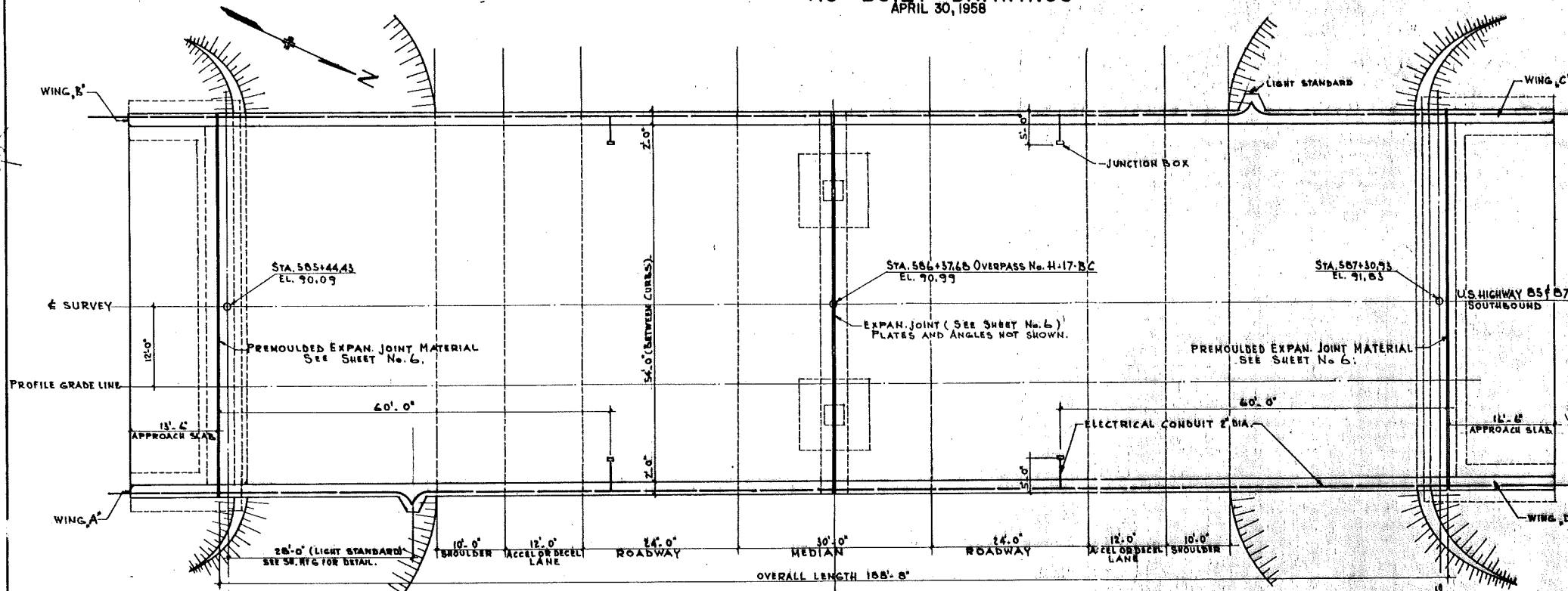
GENERAL NOTES

- ALL WORK SHALL BE DONE ACCORDING TO THE STANDARD SPECIFICATIONS OF THE COLORADO DEPARTMENT OF HIGHWAYS, ADOPTED JUNE 1, 1952.
- SOUNDINGS AND DEPTH OF FOOTINGS SHOWN ACCORDING TO THE BEST AVAILABLE DATA. IF ESSENTIALLY DIFFERENT CONDITIONS ARE ENCOUNTERED THE BRIDGE ENGINEER WILL INSPECT AND DETERMINE IF REDESIGN IS NECESSARY.
- ALL CONCRETE SHALL BE CLASS 'A' AND AIR ENTRAINED AS SPECIFIED, EXCEPT OTHERWISE NOTED FOR PRESTRESSED GIRDERS, ABUTMENTS AND WING WALLS.
- CHAMFER ALL EXPOSED CORNERS 3/4", EXCEPT AS NOTED.
- ALL REINFORCING STEEL SHALL BE INTERMEDIATE GRADE DEFORMED BARS CONFORMING TO A.A.S.H.O. SPECIFICATIONS M31 AND M157 (A.S.T.M. DESIGNATIONS A15 AND A305).
- ALL REINFORCING BARS SHALL BE TAGGED WITH THE STRUCTURE NUMBER AND MARK.
- ALL DIMENSIONS ON BAR DETAILS ARE OUT TO OUT.
- ALL HOOKS AND BENDS IN BARS SHALL CONFORM TO A.C.I. STANDARD 315-51. 2" MINIMUM CLEAR TO STEEL, EXCEPT AS NOTED.
- ALL STRUCTURAL STEEL SHALL RECEIVE ONE SHOP COAT OF ZINC CHROMATE AND TWO FIELD COATS OF ALUMINUM PAINT.
- WHEN EXCAVATING FOR FOOTINGS THE FINAL ONE FOOT IN DEPTH SHALL BE DONE BY HAND LABOR METHODS.
- ALL CONCRETE SURFACES EXPOSED TO NORMAL VIEW BY HIGHWAY TRAFFIC SHALL RECEIVE CLASS 'T' SURFACE FINISH. WING FACES SHALL RECEIVE ORDINARY SURFACE FINISH.

- * INDEX OF SHEETS
- SHEET No. 1. GENERAL PLAN AND ELEVATION
 - 2. PIER
 - 3. ABUTMENT 'A'
 - 4. ABUTMENT 'B'
 - 5. GIRDERS
 - 6. DECK
 - 7. RAILING

COLORADO DEPARTMENT OF HIGHWAYS
U.S. HIGHWAY 85-87 SOUTH BOUND
NORTH ENTRANCE INTERCHANGE
A. F. A.
OVERPASS N#H-17-BG.
GENERAL PLAN
AND ELEVATION
L. BODUROFF & ASSOCIATE
CONSULTING ENGINEERS
DENVER - COLORADO

Designed: N.H. Scale: as noted Sheet: N# 1
Drawn: J.N. Date: 11-28-56 N# of Sheets: 7
Checked: N.H.



* Sheet numbers shown refer to Bridge Sheet numbers.

FED. ROAD DIST. PROJ. NO. SHEET	9	COLO. IN.002-2(40)	11
---------------------------------	---	--------------------	----

Rev. Changed Rein. Steel quantities 8-29-57 J.V.G.
AS BUILT DRAWINGS
 APRIL 30, 1958

BAR LIST FOR PIER

MARK	TYPE	LENGTH	WT. PER	SIZE
P 801	BENT	12'-8"	128	B
P 802	"	9'-10"	20	B
P 903	"	35'-3"	10	9
P 904	STR.	16'-6"	12	9
P 505	BENT	11'-4 1/2"	16	5
P 906	"	24'-9"	8	9
P 1007	STR.	36'-0"	11	10
P 1008	"	30'-0"	3	10
P 509	"	59'-6"	4	5
P 1010	BENT	60'-0"	6	10
P 1011	STR.	20'-0"	6	10
P 1012	BENT	52'-9"	2	10
P 1013	"	54'-9"	2	10
P 1014	"	56'-9"	2	10
P 1015	"	58'-9"	2	10
P 516	"	15'-0"	44	5
P 517	"	15'-1" Av	40	5
P 518	"	16'-6"	20	5
P 519	"	13'-10 1/2"	52	5
P 520	STR.	15'-0"	4	5
P 1021	"	23'-0"	10	10
P 522	BENT	41'-1" Av	48	5
P 523	"	3'-7"	48	5
P 524	"	5'-4"	29	5
P 525	STR.	42'-0"	2	5
P 526	BENT	3'-0"	156	5

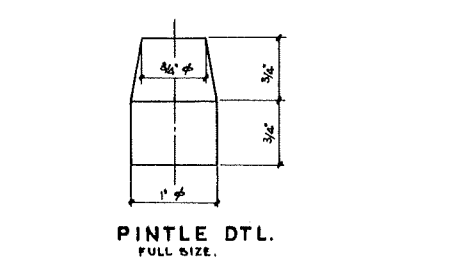
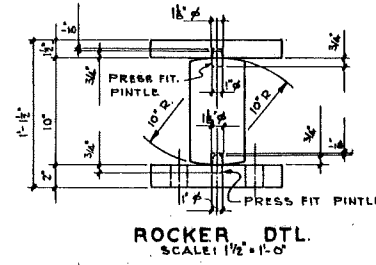
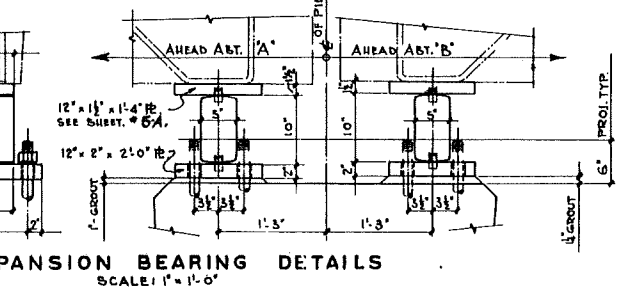
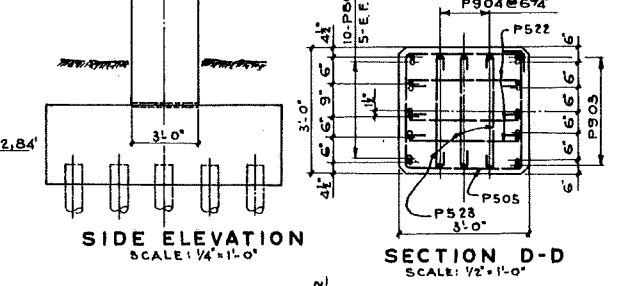
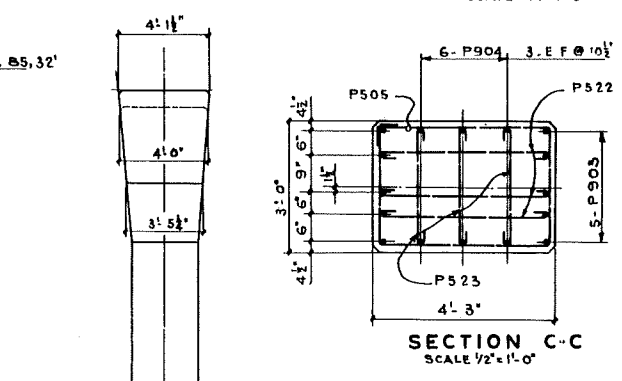
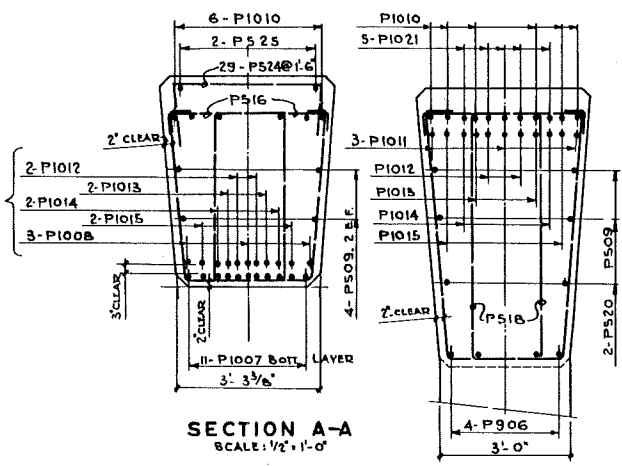
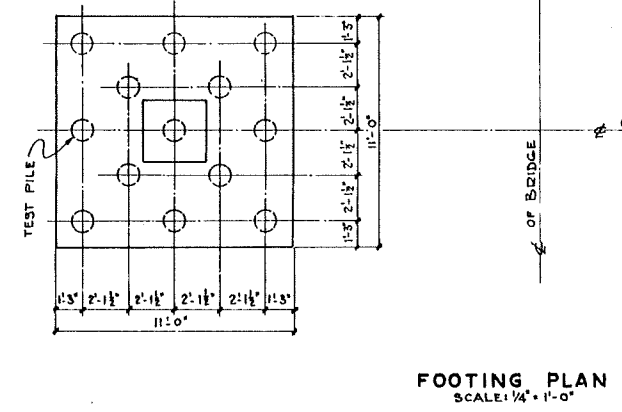
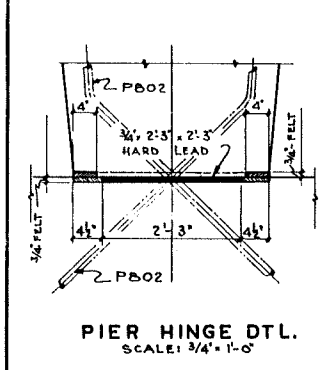
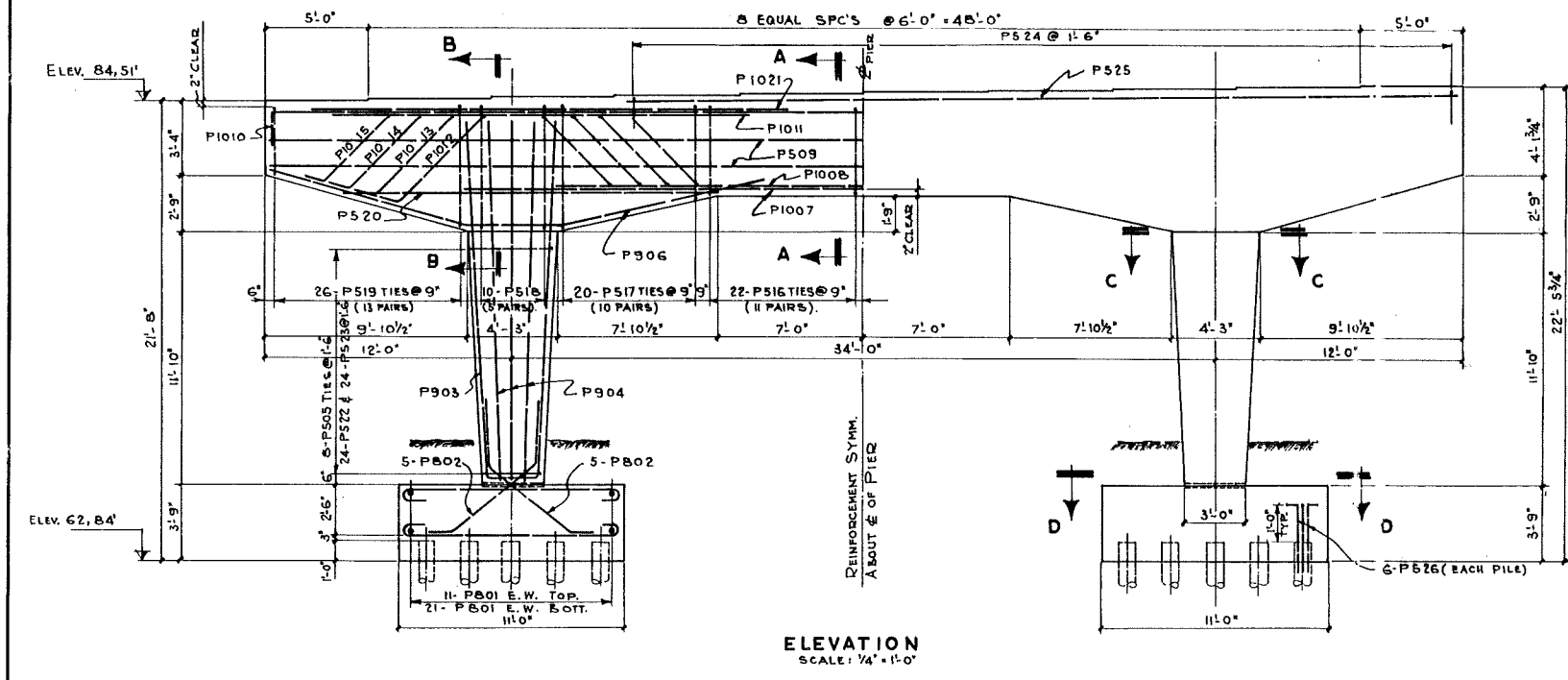
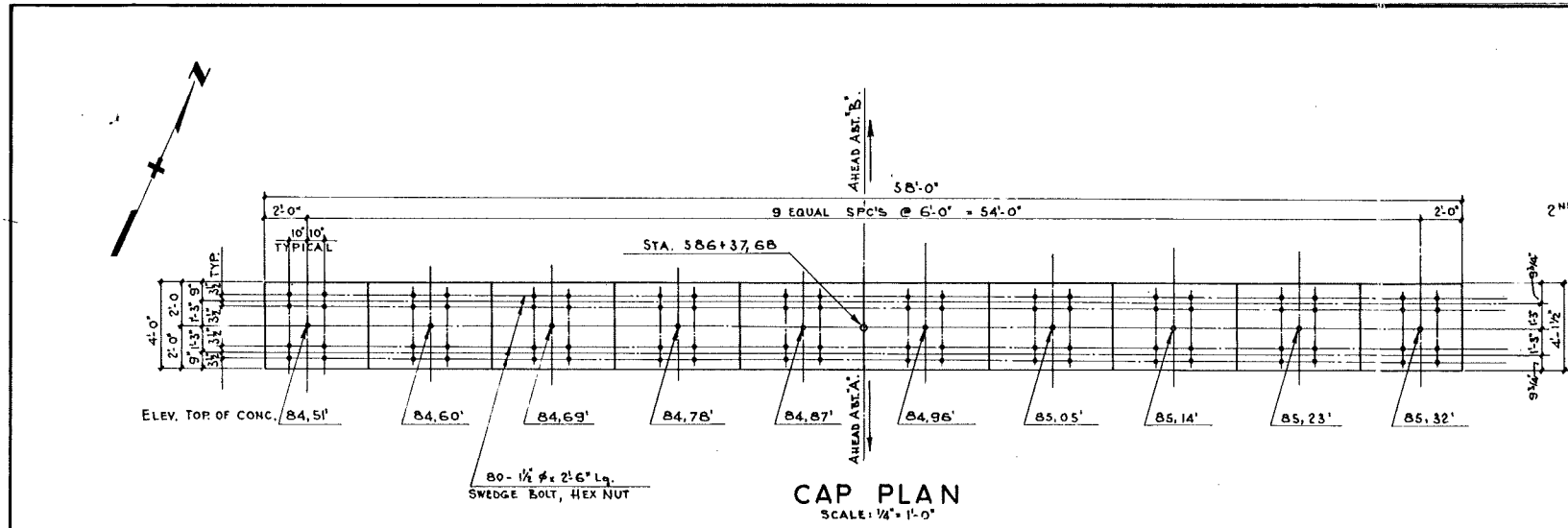
MARK	MAX. L	MIN. L	TOTAL LENGTH	WT. PER	SIZE	3779 Lbs. #5 @ 1.043 = 3941'			
P 505	3'-4 1/2"	2'-6"	12'-3"	10'-6"	7	2	1,818 # @ 2.67 = 4854		
P 517	5'-6"	4'-0"	16'-8"	15'-6"	2	9	4	749 # @ 3.10 = 2347	
P 519	5'-5"	3'-0"	16'-3"	11'-6"	2 1/2	12	4	1,641 # @ 10.4305 = 7061	
P 522	3'-4 1/2"	2'-6"	4'-6 1/2"	3'-0"	1 1/2	7	6	1% OVERRUN	187
						TOTAL	18,590'		

QUANTITIES

ITEM	Quantity	Unit
COMMON EXCAVATION		cu yd.
CLASS 'A' CONCRETE:		
FOOTINGS	34	#
COLUMNS	9.6	#
BEAM	41.5	#
STEEL PILING 12" O.D. 1/2" WALL	351	L.Ft.
HARD LEAD 3/4" TH.	10.2	Sq.Ft.
FELT 3/4" TH.	15.0	#
REINFORCING BARS	18,590	Lbs.
80-1 1/2" x 2'-6" SW.B. HEX. N.	1220	#
20-EPX. BRS. (ROCKER + PINTLE)	8,800	#
BACKFILL	56	cu yd.
MECH. TAMPING	8	Hrs.

FOR GENERAL NOTES SEE SHEET NO. 1.

COLORADO DEPARTMENT OF HIGHWAY
 U.S. HIGHWAY 85-87 SOUTH BOUND
 NORTH ENTRANCE INTERCHANGE
 A. F. A.
 OVERPASS N:H-17-BC
PIER
 L. BODUROFF & ASSOCIATE
 CONSULTING ENGINEERS
 Designed: N.N. Scale: as noted Sheet No. 2
 Drawn: N.H.D. Date: 11.28.56 No. of Sheets 7
 Checked: N.N.



AS BUILT DRAWINGS
APRIL 30, 1958

FED. ROAD DIST. NO.	DIST.	PROJ. NO.	SHEET NO.
9	COLO.	LN002-2(40)	12

Rev. Changed Reinf. Steel Quantities 3-29-57 JVG.

BAR LIST FOR ABUTMENT "A"

MARK	TYPE	LENGTH	NO. PER	PIECE
A501	BENT	15'-3"	60	5
A502	STR.	60'-0"	8	
A503	"	8'-3"	53	
A504	BENT	7'-3"	57	
A505	STR.	56'-0"	21	
A506	"	3'-3"	114	
A507	BENT	3'-0"	114	
A508	"	6'-11"	53	
A509	"	16'-2"	36	
A510	STR.	17'-0"	20	
A511	BENT	10'-4"	26	
A512	STR.	10'-0"	26	
A513	"	6'-6"	26	
A514	BENT	5'-11"	26	
A515	"	6'-5"	26	
A516	STR.	13'-0"	26	
A517	BENT	4'-11"	16	
A518	STR.	14'-6"	9	
A519	"	15'-0"	9	
A520	BENT	7'-6"	3	
A521	"	6'-8"	3	5

BAR SUMMARY		
7247	Lin. ft.	5 @ 1043' = 7,575'
1%	OVERBURH	71'
TOTAL		7,650'

QUANTITIES.

ITEM	QUANTITY	UNIT
STEEL PILING 12 3/4" O.D. 1/2" WALL	541	lin. ft.
REINFORCEMENT	7,650	Lbs.
COMMON EXCAVATION	250	Cu. Yd.
CONCRETE CLASS 'A' - FOOTING WALLS	50	Cu. Yd.
6"		
10 - FIXED BRG. TYPE (ROCKER & BASE R)	4,440	Lbs.
B. D.A.O.B. STIRRUPS (SEE SHEET NIG)	10	
16 - 7/8" x 10" BOLTS W. Sq. Hd. Hex. Nut (Posts)	41	
40 - 1 1/2" x 2-6" SWEDGE Bolt, Hex. Nut.	610	
STONE BACKFILL	26	Cu. Yd.
STRUCTURE BACKFILL (CLASS)	130	
MECHANICAL TAMPING	20	Hr.
WATER PROOFING	93	Sq. Yd.
SHEET COPPER (32 oz. PER Sq. Ft.)	54	Lbs.
ELECTRICAL CONDUIT 2" #	35	Lin. ft.

NOTE: PLACE TWO-COAT PAINTED WATERPROOFING ON TOPS OF HEELS AND ON REAR FACES OF ABUTMENTS AND WING WALLS UP TO A LINE 1'-6" BELOW TOPS OF WALLS.

FOR GENERAL NOTES SEE SHEET N-1.

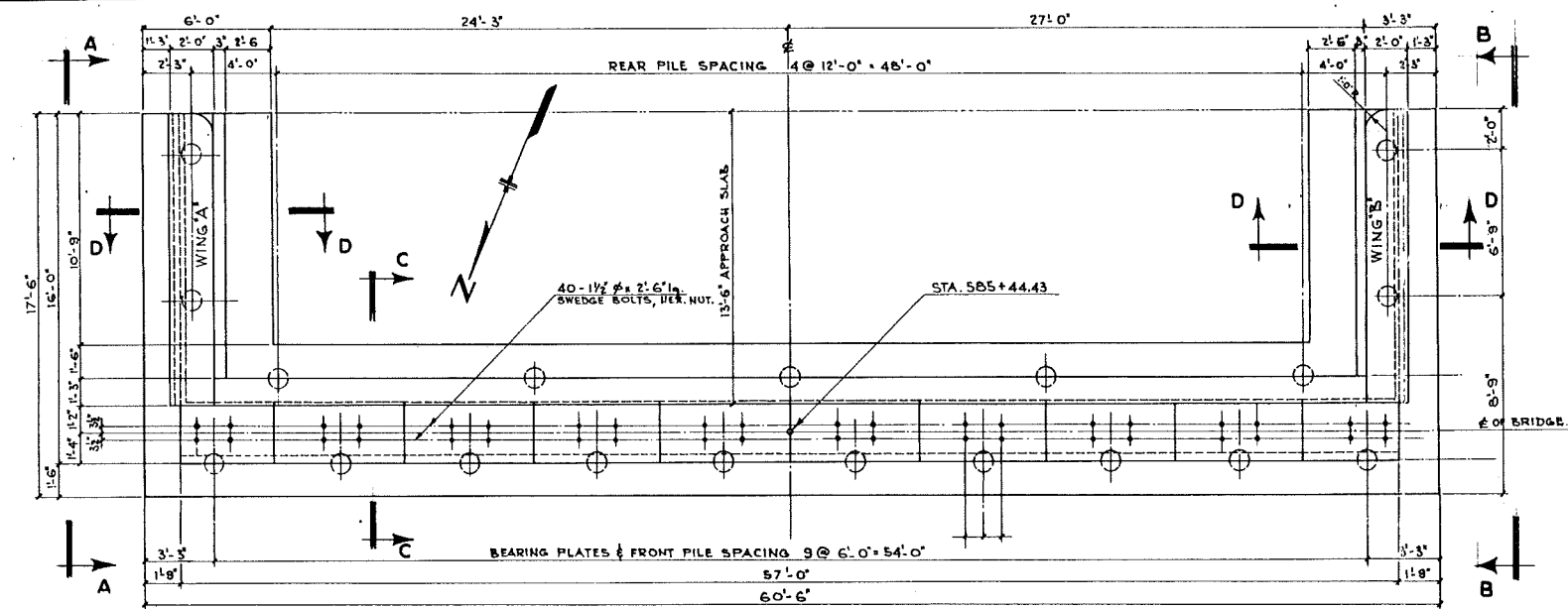
COLORADO DEPARTMENT OF HIGHWAYS
U.S. HIGHWAY 85 - 87 SOUTH BOUND

NORTH ENTRANCE INTERCHANGE
A. F. A.

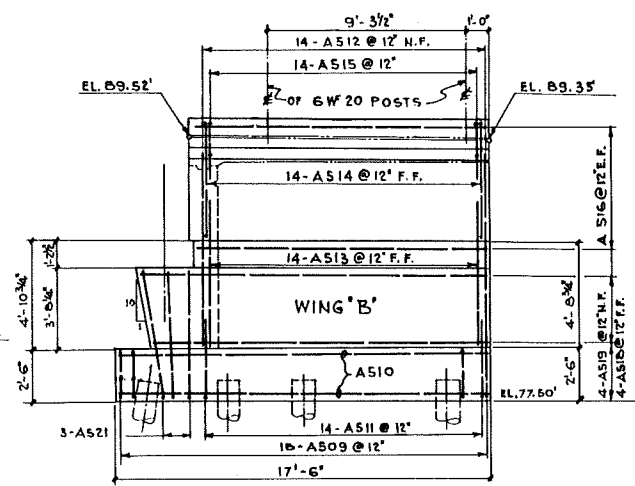
OVERPASS N-17-B.C
ABUTMENT "A"

L. BODUROFF & ASSOCIATE
CONSULTING ENGINEERS

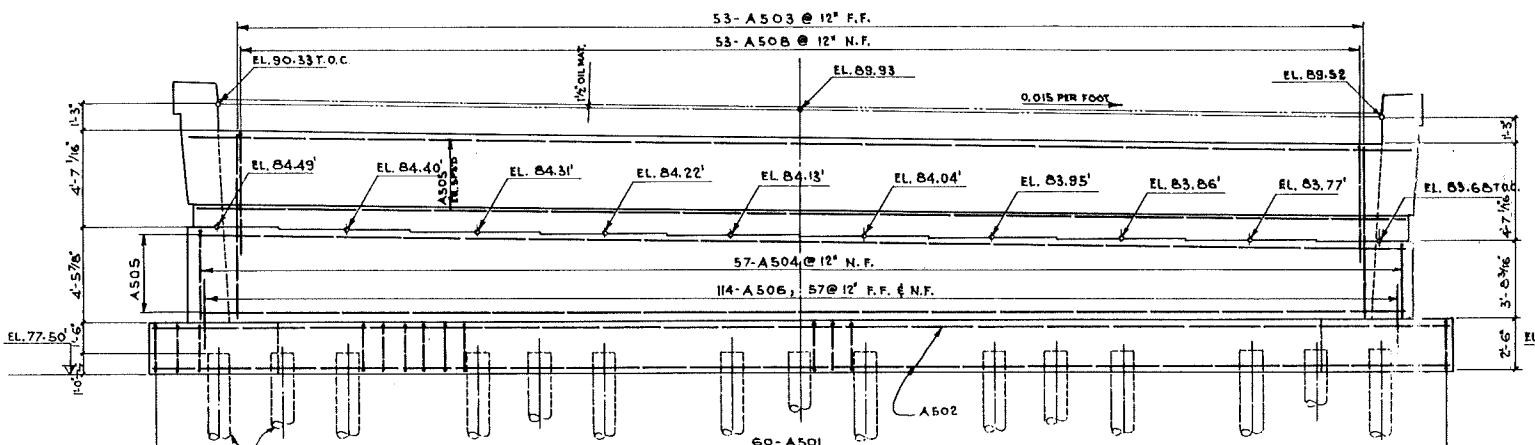
Design: N.N. Scale: as noted Sheet: N-3
Drawn: N.H.D. Date: 11/28/56 No. of Sheets: 7
Checked: H.N.



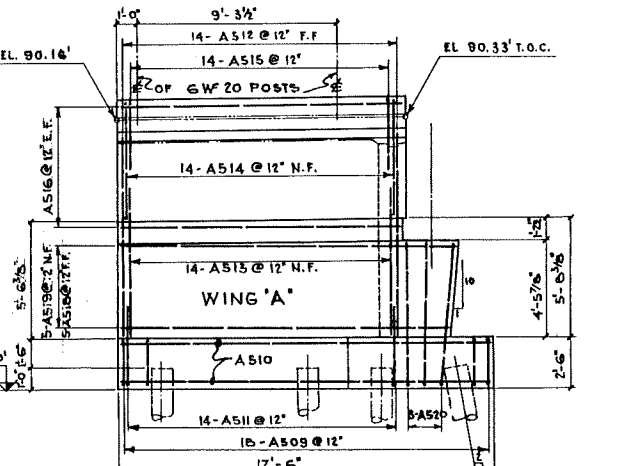
ABUTMENT "A" - PLAN
SCALE: 1/4" = 1'-0"



ELEVATION B-B
SCALE: 1/4" = 1'-0"

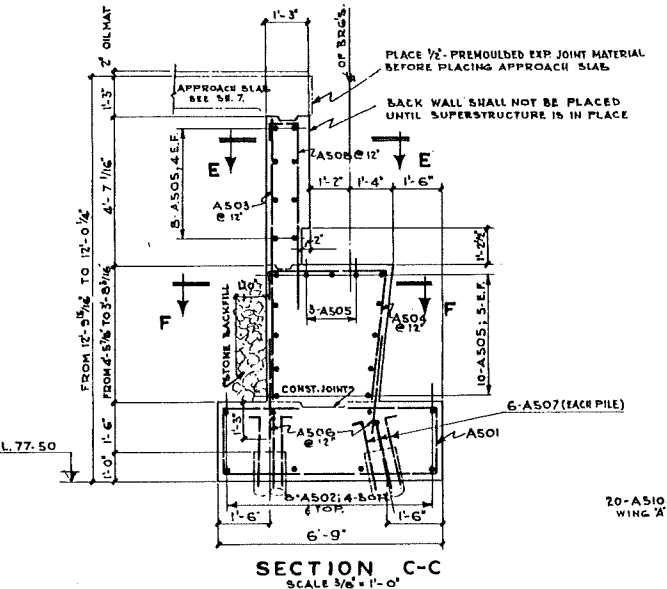


ABUTMENT "A" - ELEVATION
SCALE: 1/4" = 1'-0"

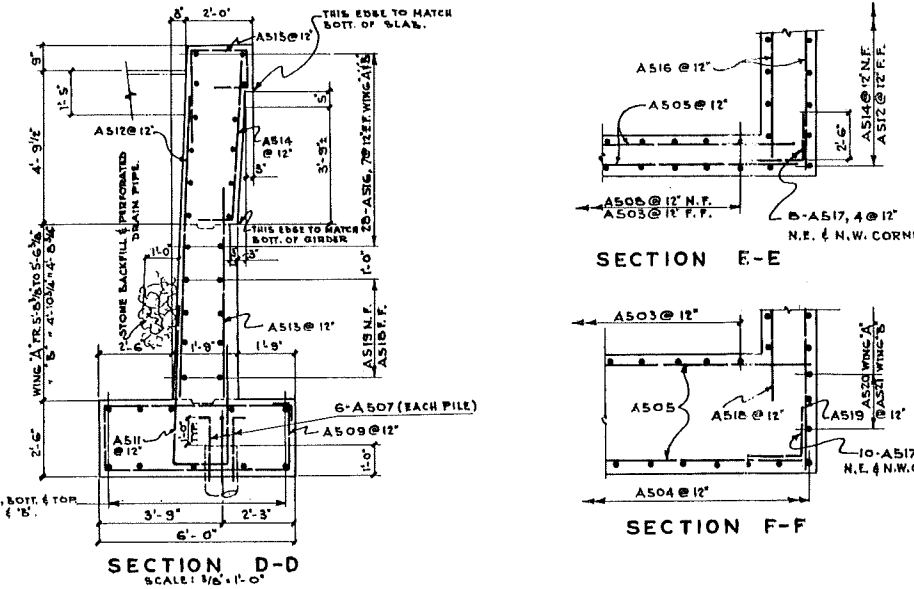


ELEVATION A-A
SCALE: 1/4" = 1'-0"

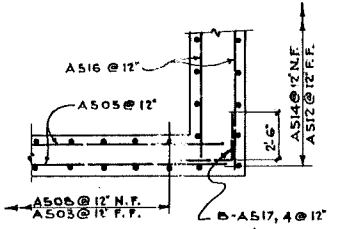
MAX. DESIGN PILE LOAD: 47 TONS
ALL PILES SHALL BE 12" DIA.
STEEL FILLED WITH CONCRETE.



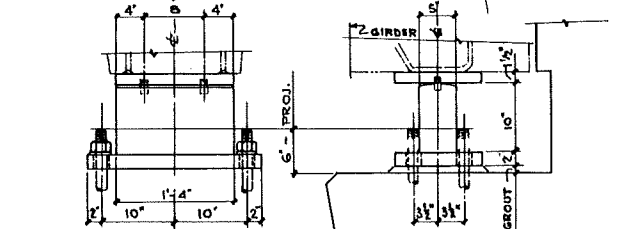
SECTION C-C
SCALE: 3/8" = 1'-0"



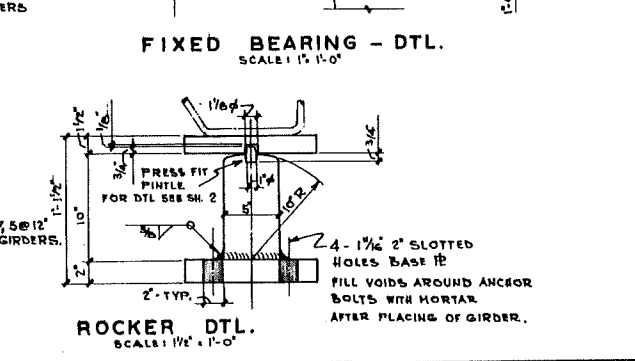
SECTION D-D
SCALE: 1/8" = 1'-0"



SECTION E-E



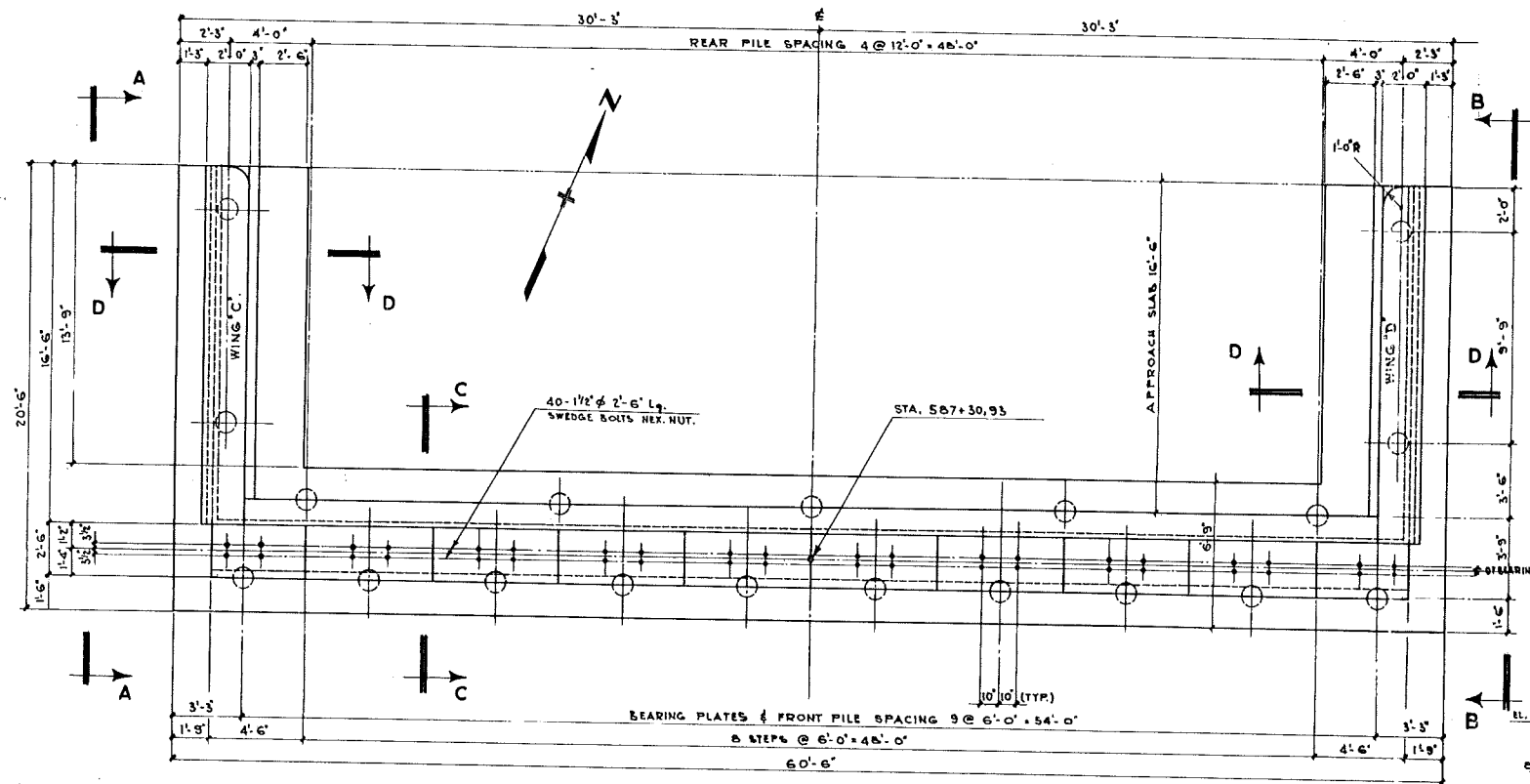
SECTION F-F



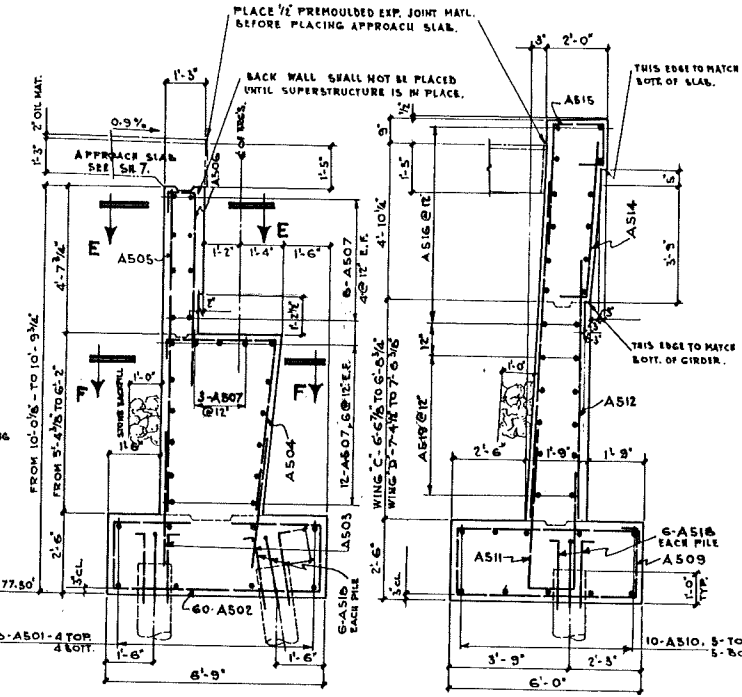
ROCKER DTL.
SCALE: 1/2" = 1'-0"

AS BUILT DRAWINGS
APRIL 30, 1958

FED. ROAD DIST. NO.	DIST.	PROJ. NO.	SHEET NO.
9	COLO.	IN 002-2(40)	13



ABUTMENT "B" - PLAN
SCALE: 1/4" = 1'-0"



SECTION C-C
SCALE 3/8" = 1'-0"

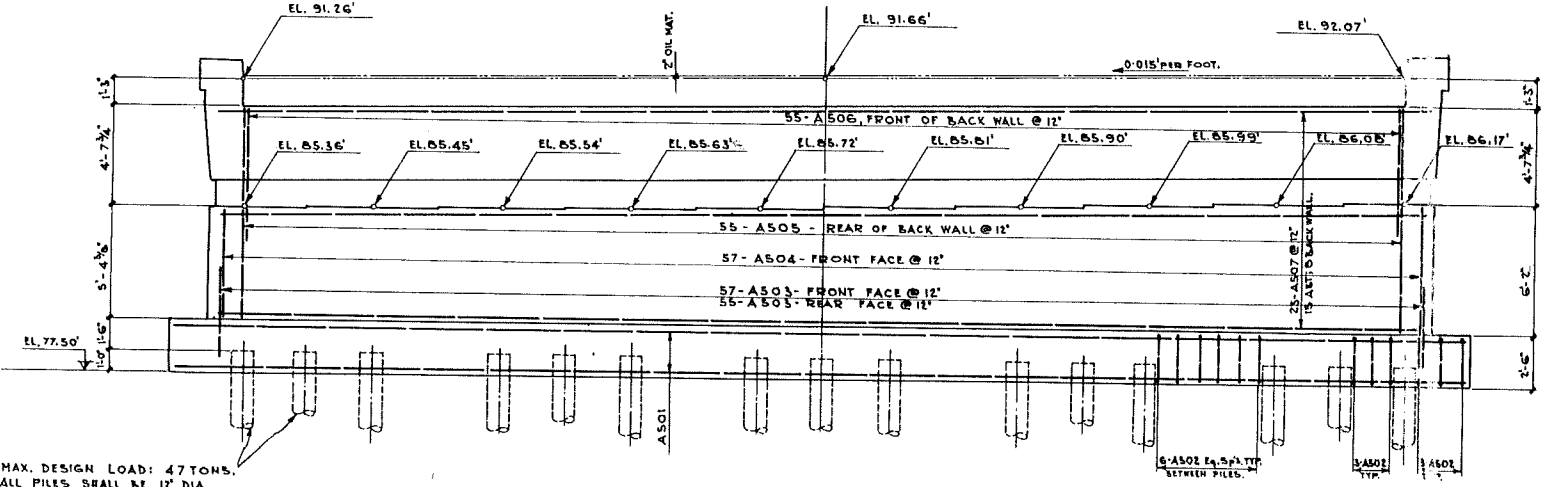
SECTION D-D
SCALE 3/8" = 1'-0"

MARK.	TYPE	LENGTH	NO.	SIZE
A501	STR.	62'-0"	8	#5
A502	BENT	15'-9"	60	
A503	STR.	4'-3"	112	
A504	BENT	9'-5"	57	
A505	STR.	9'-10"	55	
A506	BENT	8'-0"	55	
A507	STR.	58'-0"	23	
A508	BENT	5'-0"	20	
A509	BENT	16'-1"	44	
A510	STR.	20'-0"	20	
A511	BENT	9'-9"	24	
A512	STR.	8'-6"	24	
A513	STR.	10'-0"	24	
A514	BENT	5'-8"	24	
A515	BENT	7'-6"	24	
A516	STR.	16'-0"	25	
A517	BENT	8'-8"	6	
A518	STR.	3'-0"	114	
A519	BENT	18'-0"	20	#5

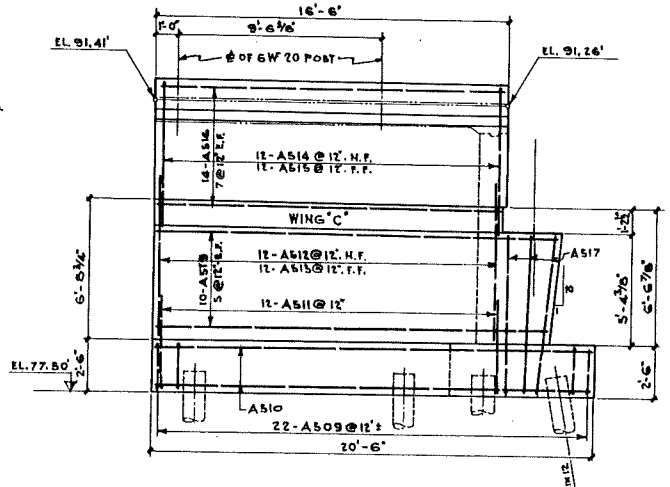
#5-B173 Lin 11 @ 1.043' Lin ft. = 8510 #
1% OVERRRUN
TOTAL 8595 #

ITEM	QUANTITY	UNIT
STEEL PILING 12" O.D. 7/8" WALL	503	LW FT
REINFORCEMENT	8595	LB
COMMON EXCAVATION	266	CY
CONCRETE CLASS "A", FOOTING	53	YD
CONCRETE CLASS "A", WALLS	81	YD
DRY-FILL BACKFILL (ROCKERY BOT. FT.)	4440	LL
B-D408 STIRRUPS (SEE SK. N° 6)	10	-
16-7/8" #12 BOLTS WITH NUTS	41	-
40-1 1/2" #2-6" SWEDGE BOLT NUT	610	-
STONE BACKFILL	33	CY
STRUCTURE BACKFILL (CLASS)	140	YD
MECHANICAL TAMPING	22	HR.
WATER PROOFING	120	SQ FT
SHEET COPPER (2.0 LB. PER SQ. FT.)	66	LL
ELECTRICAL CONDUIT 2"	35	LW FT

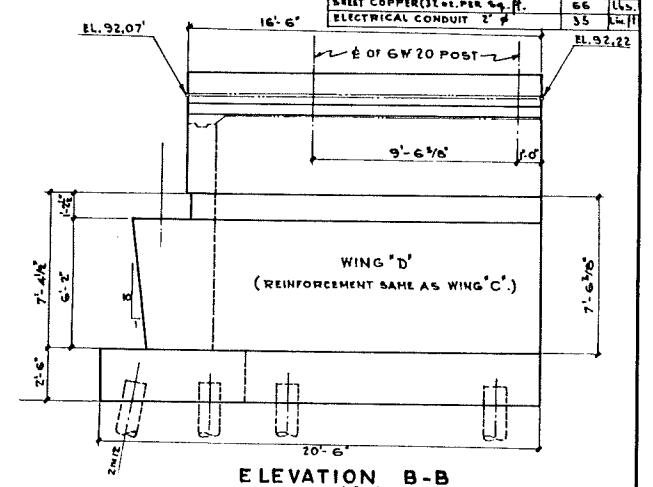
NOTE:
1. PLACE TWO-COAT PAINTED WATERPROOFING ON TOPS OF HEELS AND REAR FACES OF ABT'S AND WING WALLS UP TO A LINE 1'-6" BELOW TOPS OF WALLS.
2. FOR FIXED BEARING DET'S SEE SHEET N° 3.



ABUTMENT "B" ELEVATION
SCALE: 1/4" = 1'-0"

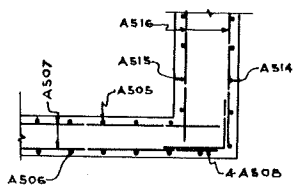


ELEVATION A-A
SCALE 1/4" = 1'-0"

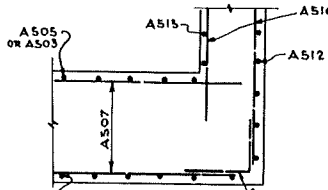


ELEVATION B-B
SCALE 1/4" = 1'-0"

MAX. DESIGN LOAD: 47 TONS.
ALL PILES SHALL BE 12" DIA.
STEEL PIPE FILLED WITH CONCRETE.



SECTION E-E
SCALE: 3/8" = 1'-0"



SECTION F-F
SCALE: 3/8" = 1'-0"

FOR GENERAL NOTES, SEE SHEET N° 1.

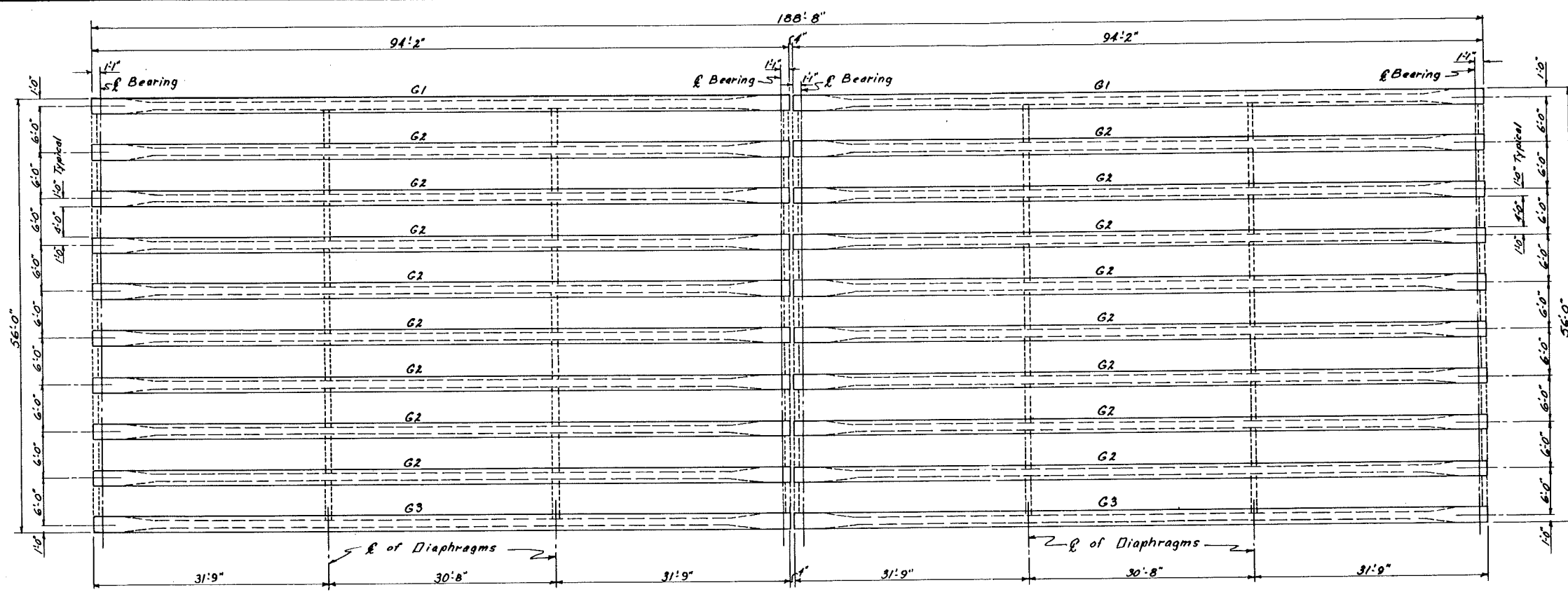
COLORADO DEPARTMENT OF HIGHWAYS
U.S. HIGHWAY 85-87 SOUTH BOUND
NORTH ENTRANCE INTERCHANGE
A. F. A.
OVERPASS N° H-17-B.C
ABUTMENT "B"

L. BODUROFF & ASSOCIATE
CONSULTING ENGINEERS

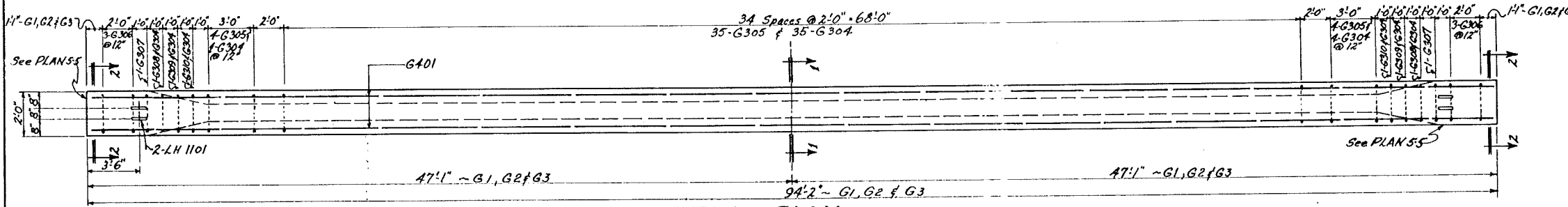
Designed: N.N. Scale: as noted Sheet N° 4
Drawn: N.H.D. Date: 11.28.56 N° of Sheets 7
Checked: N.N.

FED. ROAD DIST. PROJ. NO. SHEET NO.	9	COLO. 14 002-2(40)	14
-------------------------------------	---	--------------------	----

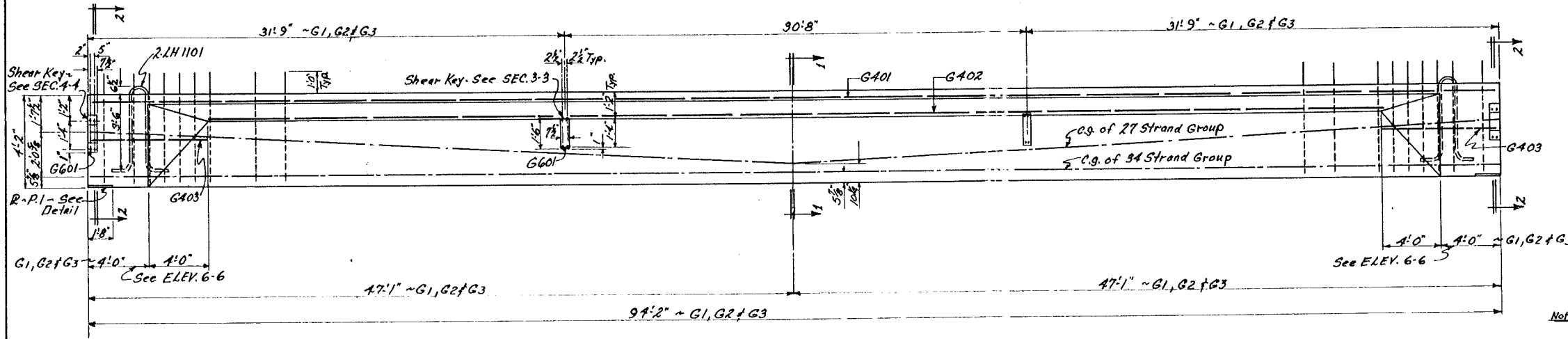
ASSUMED NORTH
AS BUILT DRAWINGS
 APRIL 30, 1958



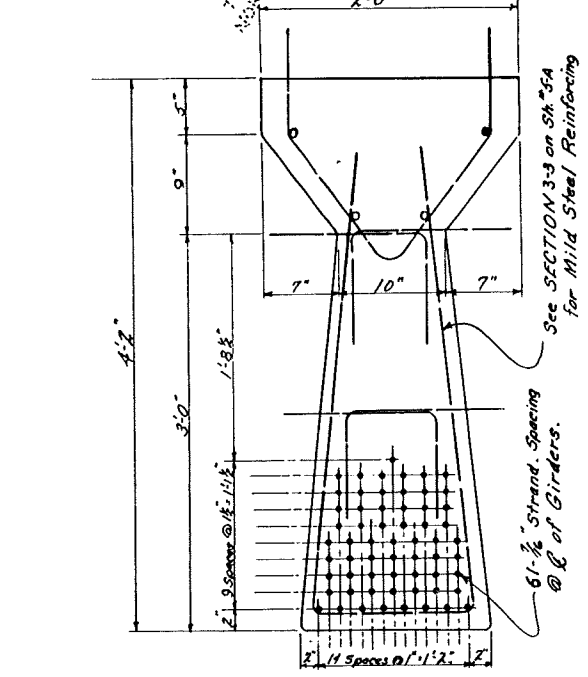
ERECTION PLAN



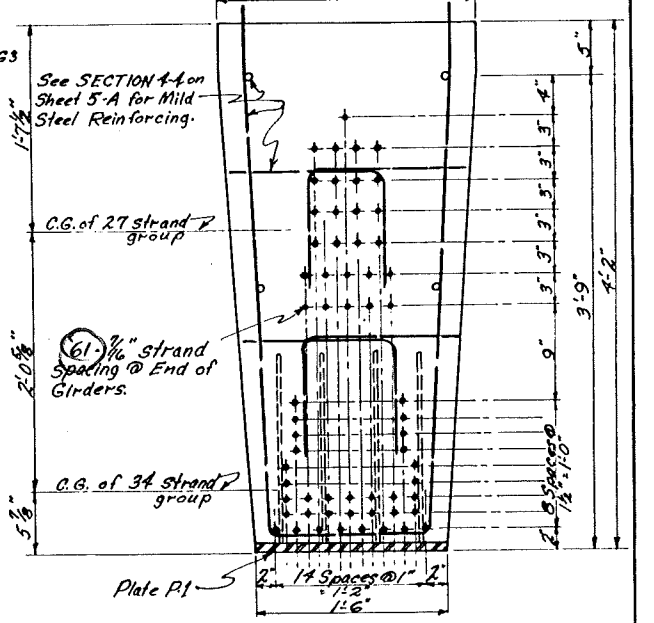
TYPICAL PLAN



**ELEVATION G2
 INTERIOR ELEVATION G1, G3**



SECTION 1-1



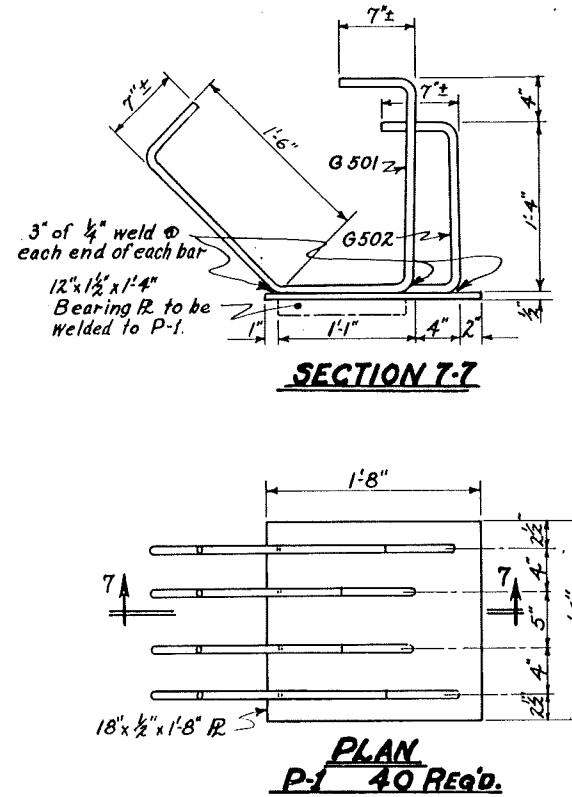
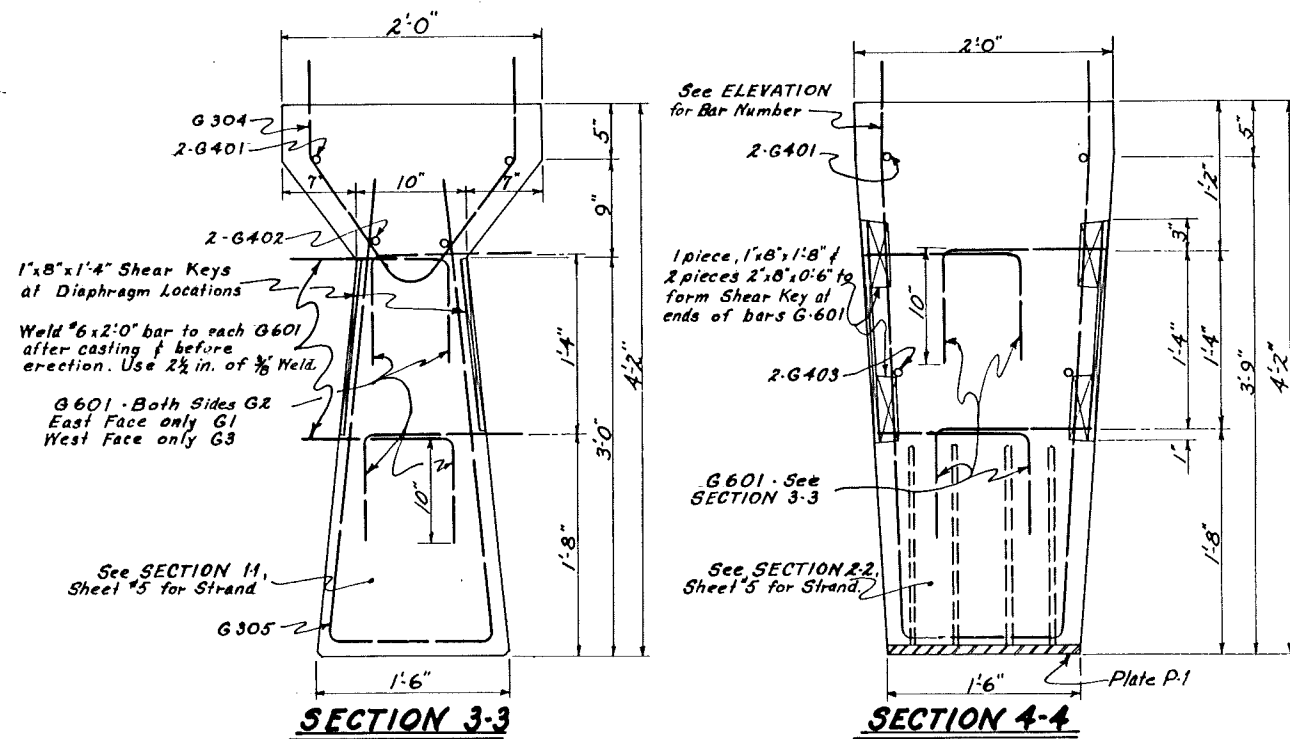
SECTION 2-2

COLORADO DEPARTMENT OF HIGHWAYS
 U.S. HIGHWAY 85-87 SOUTH BOUND
 NORTH ENTRANCE INTERCHANGE
 A. F. A.
 OVERPASS N-H-17-BC
PRESTRESSED GIRDER

L. BODUROFF & ASSOCIATE
 CONSULTING ENGINEERS

Designed: L.B. Scale as noted Sheet No. 5
 Drawn: B.F.W.
 Checked: L.B. Date: 11-28-56 No. of Sheets 7

Note: See Sheet No. 5-A for Bar List.



BAR LIST FOR 20 GIRDERS

SHAPE	MARK	SIZE	LENGTH	Nº REQ.	A.	B.
(a) (b) (a)	G 401	#4	40'-0"	40		
(a) (b) (a)	G 401	#4	15'-8"	40		
(a) (b) (a)	G 402	#4	40'-0"	40		
(a) (b) (a)	G 402	#4	39'-6"	40		
(a) (b) (a)	G 403	#4	7'-9"	80		
(a) (b) (a)	G 501	#5	5'-2"	80	1'-1"	1'-8"
(a) (b) (a)	G 502	#5	5'-2"	80	1'-5"	1'-4"
(a) (b) (a)	G 601	#6	2'-0"	576		
(a) (b) (a)	G 306	#3	11'-3"	120	1'-7"	
(a) (b) (a)	G 307	#3	11'-3"	40	1'-3"	
(a) (b) (a)	G 305	#3	8'-3"	860	0'-5"	3'-6"
(a) (b) (a)	G 308	#3	9'-3"	40	0'-11"	4'-0"
(a) (b) (a)	G 309	#3	9'-3"	40	0'-8"	4'-0"
(a) (b) (a)	G 310	#3	9'-3"	40	0'-5"	4'-0"
(a) (b) (a)	G 304	#3	7'-10"	980		
(a) (b) (a)	LH 1101	#11	10'-2"	80		
17,678 lin. ft. #3 @ 0.376%/ft. = 6647 #						
7,627 - #4 @ 0.668% = 5095						
828 - #5 @ 1.043% = 864						
2,304 - #6 @ 1.502% = 3461						
814 - #11 @ 5.313% = 4325						
					20,392 #	
					1% Over-run 204	
					Total Weight = 20,596 #	

QUANTITIES FOR 20 GIRDERS

ITEM	QUANT.	UNIT
5500 psi CONCRETE	394	Cu Yds
REINF. STEEL + 1%	20,596	Lbs.
40-R 12"x1 1/2"x1'-4"	3264	"
40-R 18"x1 1/2"x1'-8"	2044	"

NOTES:

Concrete for the Precast Girders to be 5,500 psi Cylinder Strength at 28 days

High Tensile Strand for Prestressing Units to have Min. Ult. Strength of 200,000 psi and Unit Elongation at breaking point of 3% on 10" long testing wire.

The Water-Cement Ratio of the Concrete for Girders to be Max. 0.5 and Slump not more than 2".

All Exposed Surfaces of Bearing Plates to be Aluminum Sprayed.

For General Notes, See Sheet #1.

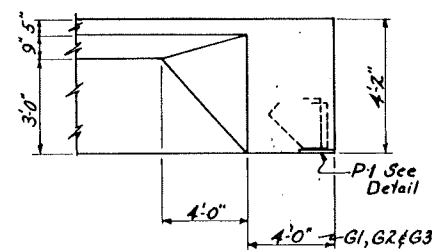
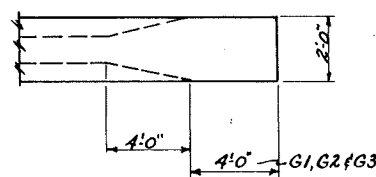
COLORADO DEPARTMENT OF HIGHWAYS
U.S. HIGHWAY 83-87 SOUTHBOUND

NORTH ENTRANCE INTERCHANGE AFA
OVERPASS Nº H-17-BC

PRESTRESSED GIRDER DETAILS

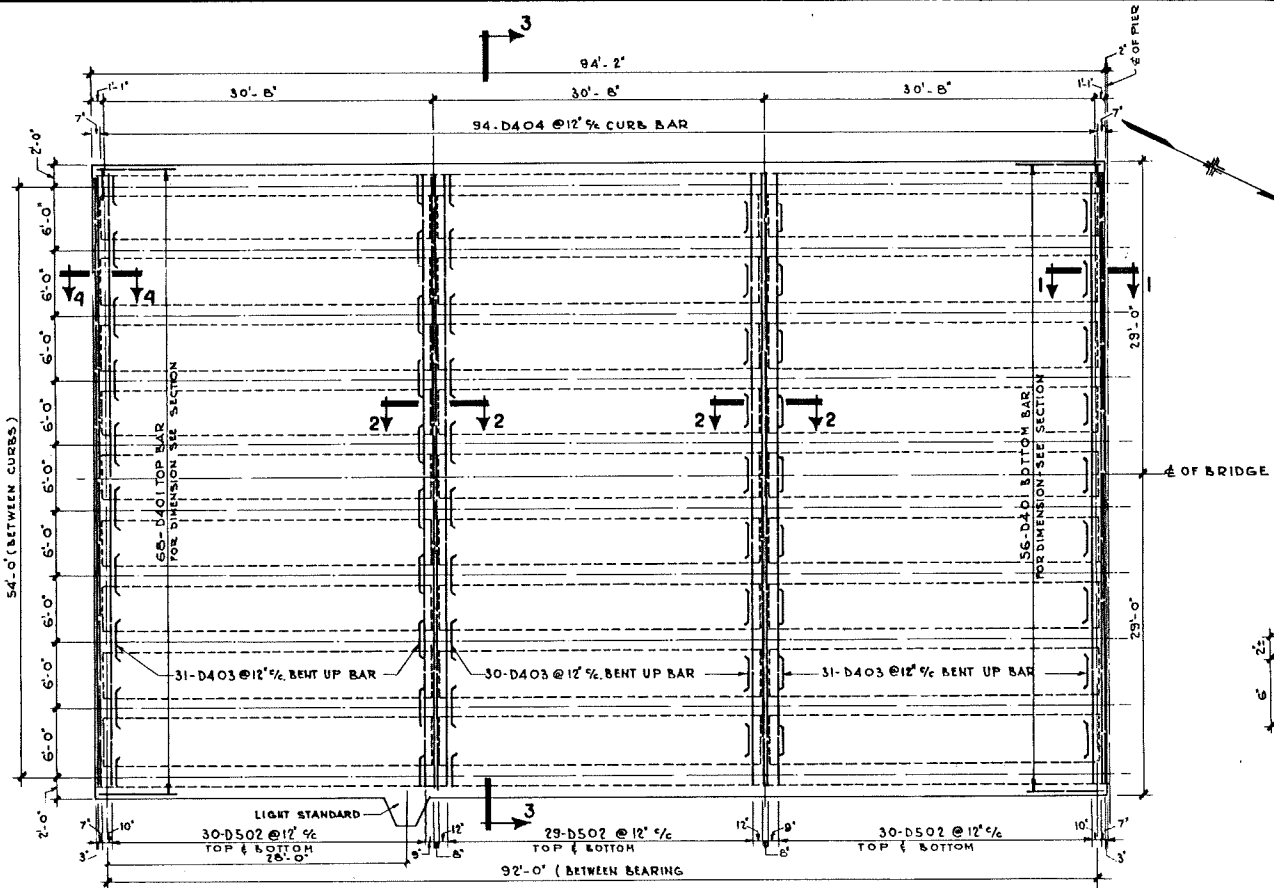
L. BODUROFF & ASSOCIATE
CONSULTING ENGINEERS

Designed: L.B.	Scale: As Noted	Sheet Nº 5-A
Drawn: J.E.E.	Date: 11-28-56	Nº of Sheets: 7
Checked: L.B.		



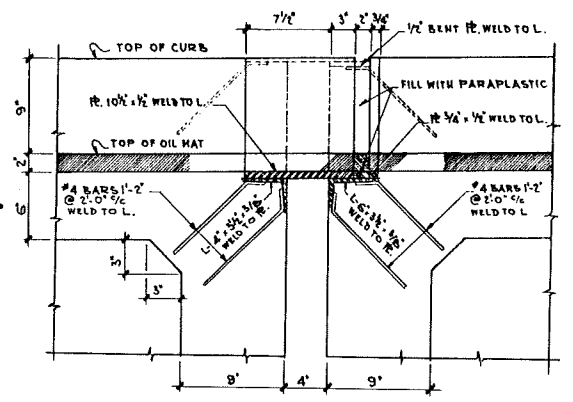
AS BUILT DRAWINGS
APRIL 30, 1958

FED. ROAD DIST. PROJ. NO. SHEET NO.	COLO. LN.002-2(40) 15
-------------------------------------	-----------------------

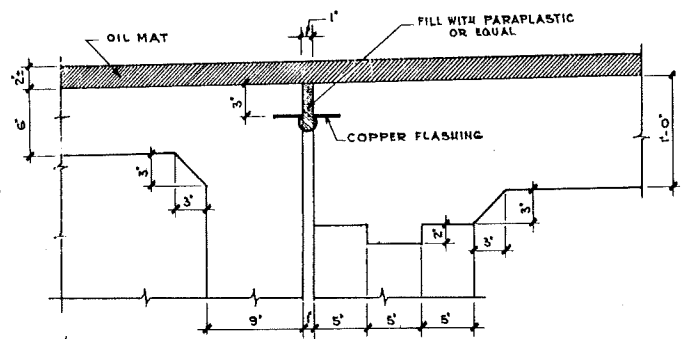


HALF PLAN OF DECK
SCALE: 1/8" = 1'-0"

NOTE:
OTHER HALF SYMMETRICAL TO \pm OF PIER
FOR LOCATION OF HANDRAIL POSTS
SEE SHEET NO. 1.



EXP. JOINT AT PIER
SCALE: 1 1/2" = 1'-0"



SECTION 4-4 (AT ABTS. 'A' AND 'B')
SCALE: 1 1/2" = 1'-0"

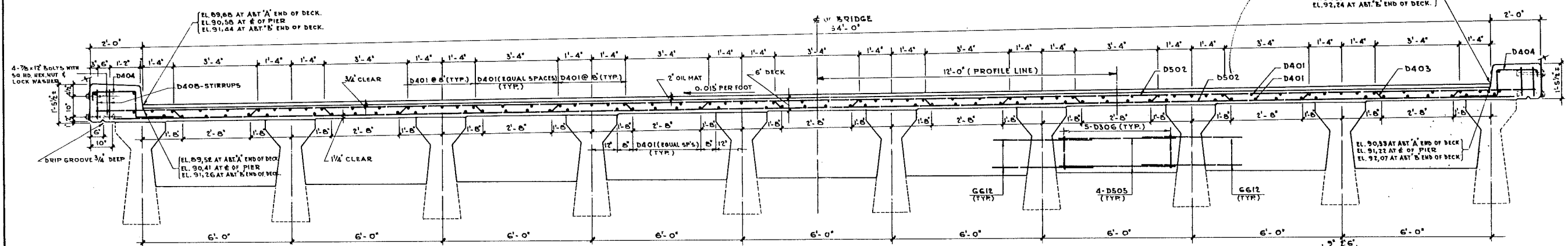
BAR LIST FOR DECK

MARK	SIZE	LENGTH	NO. REQ'D
D401	#4	97'-10"	248
D502	#5	58'-0"	388
D403	#4	68'-11"	184
D404	#4	4'-6"	376
D505	#5	4'-6"	288
D306	#3	8'-0"	180
D307	#3	7'-7"	180
D405	#4	3'-0"	80
D509	#5	3'-3"	8
D510	#5	2'-0"	4
D511	#5	10'-6"	6
D512	#5	5'-6"	4
23942 Lbs. #5 @ 1055' = 24971#			
38875 " #4 @ 668' = 25969			
2804 " #3 @ 376' = 1054			
51994			
1% OVERRUN			
TOTAL WEIGHT			
520			
57.4			

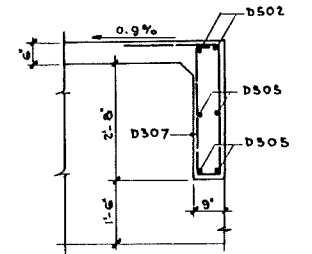
QUANTITIES FOR DECK

ITEM	QUANTITY	UNIT
CLASS A CONCRETE	250.60	Cu. Yds.
PLANT MIXED ASPHALTIC SURF.	108.00	TONS.
REINFORCING STEEL (1% OVERRUN)	52514	Lbs.
160-7/8 x 12 BOLTS	401.60	Lbs.
114#4 ANCOR BARS-1'-2"	85.18	Lbs.
R. 10 1/2 x 1/2 x 6'-0"	1074.00	Lbs.
R. 3/4 x 1/2 x 6'-0"	76.80	Lbs.
R. 5/8 x 1/2 x 6'-0"	58.68	Lbs.
L-4 x 3 1/2 x 3/8 x 5'-0"	491.40	Lbs.
L-6 x 3 1/2 x 3/8 x 5'-0"	631.80	Lbs.
SHEET COPPER (31.06 PER SQ FT)	232.00	Lbs.
ELECTRICAL CONDUIT 2"	400	Ln. Ft.
1 1/2" x 10 1/2 STD. PIPE	30	Lbs.

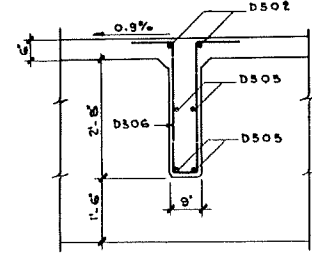
NOTE:
TO FORM THE VERTICAL CURVE, SLAB THICKNESS IS UNIFORMLY DECREASED FROM 6" AT STA. 566+00 TO 5 1/2" AT STA. 565+44.43.



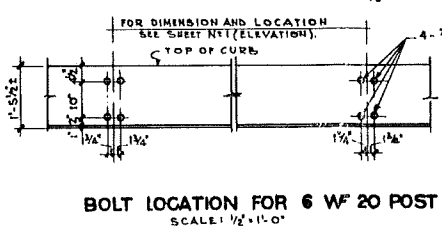
SECTION 3-3
SCALE: 1/2" = 1'-0"



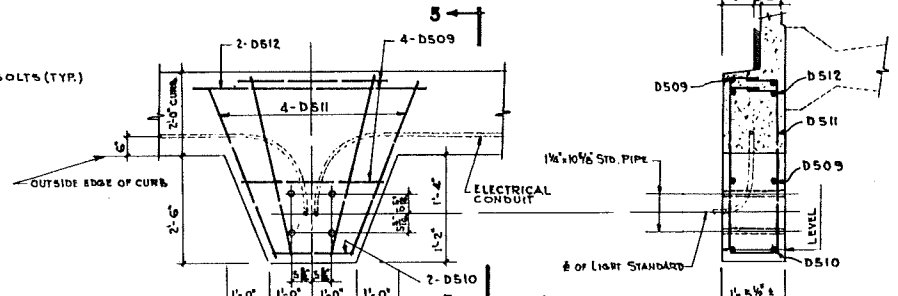
SECTION 1-1
SCALE: 1/2" = 1'-0"



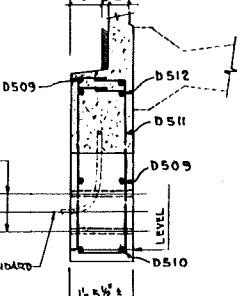
SECTION 2-2
SCALE: 1/2" = 1'-0"



BOLT LOCATION FOR 6 W/ 20 POST
SCALE: 1/2" = 1'-0"



LIGHT STANDART SUPPORT
SCALE: 1/2" = 1'-0"



SECTION 5-5
SCALE: 1/2" = 1'-0"

FOR GENERAL NOTES, SEE SHEET NO. 1.

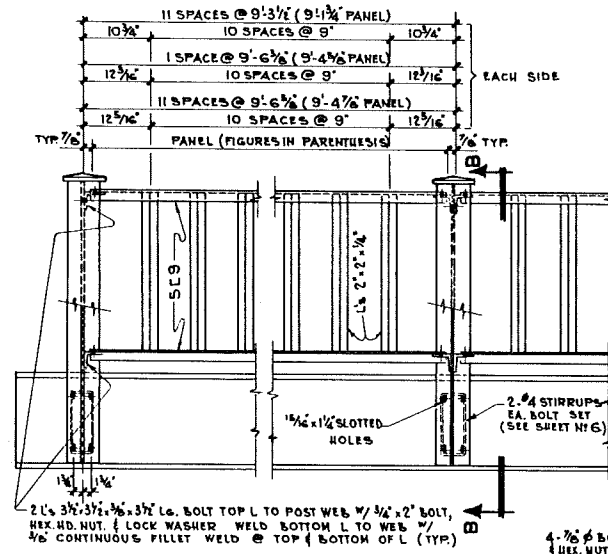
COLORADO DEPARTMENT OF HIGHWAYS
U.S. HIGHWAY 85-87 SOUTH BOUND

NORTH ENTRANCE INTERCHANGE AFA
OVERPASS N# H-17-B.C.

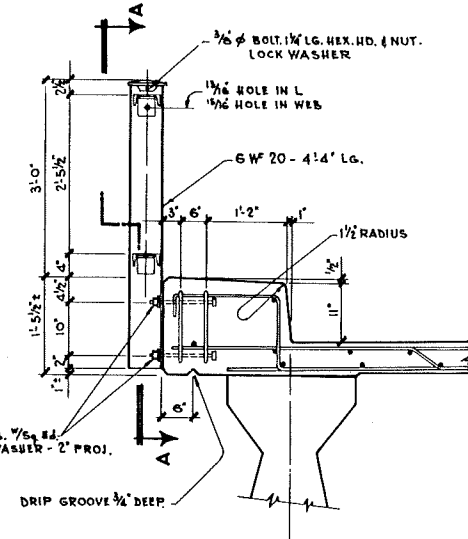
DECK PLAN AND SECTIONS

L. BODUROFF & ASSOCIATE
CONSULTING ENGINEERS

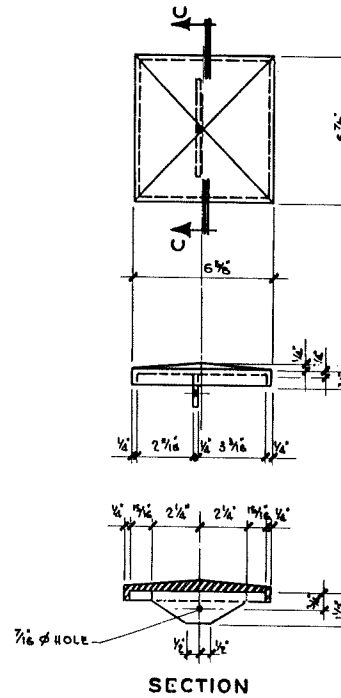
Designed: N.N. Scale: as noted Sheet No. 8
Drawn: N.N. Date: 11.28.56 1st of 3 sheets 7
Checked: N.N.



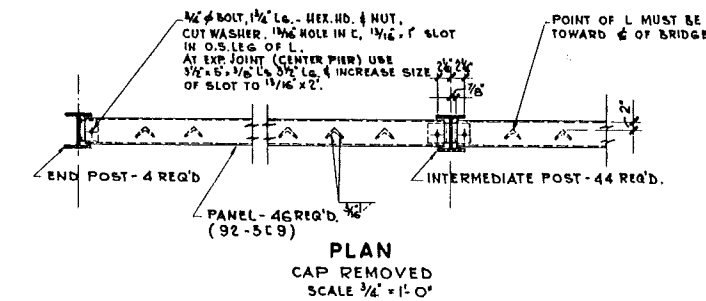
SECTION A-A
SCALE 3/4" = 1'-0"



SECTION B-B
SCALE 3/4" = 1'-0"

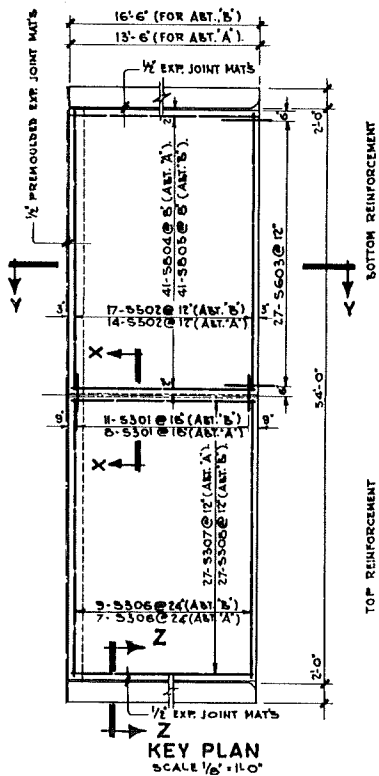


CAST IRON CAP FOR POST
4B-REQ'D
SCALE 3" = 1'-0"

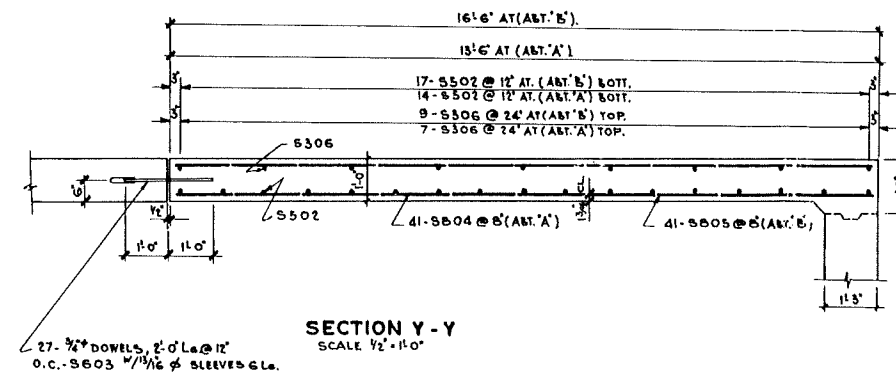


PLAN
CAP REMOVED
SCALE 3/4" = 1'-0"

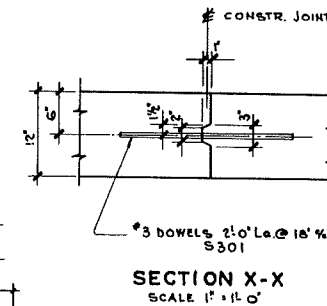
NOTE: FOR GENERAL ELEVATION OF STEEL HANDRAIL SEE SHEET N°1.
STEEL HANDRAIL



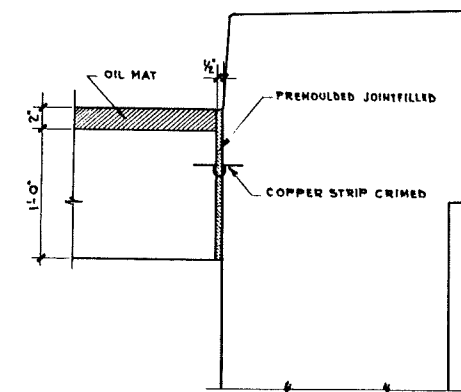
KEY PLAN
SCALE 1/8" = 1'-0"



SECTION Y-Y
SCALE 1/2" = 1'-0"



SECTION X-X
SCALE 1" = 1'-0"



SECTION Z-Z
SCALE 1 1/2" = 1'-0"

BAR LIST FOR TWO APPROACH SLAB

MARK	TYPE	LENGTH	N° REQ'D	SIZE
S301	STRAIGHT	21'-0"	19	#3
S302	"	26'-0"	62	#5
S603	"	21'-0"	106	#6
S604	"	13'-0"	82	#6
S605	"	16'-0"	82	#6
S306	"	26'-0"	32	#3
S307	"	13'-0"	54	#3
S308	"	16'-0"	54	#3
#3 BARS - 2457 Lw. ft. @ .376 Lw. ft. =				924.00
#5 BARS - 1653 " @ 1.043 " =				1724.10
#6 BARS - 216 " @ 1.502 " =				324.40
#6 BARS - 2375 " @ 2.670 " =				6349.20
				9321.70
1% OVERRUN				93.30
TOTAL WEIGHT				9415.00

QUANTITIES

ITEM	QUANTITIES	UNIT
REINFORCING STEEL	9415	Lbs.
CONCRETE CLASS A	62	Cu. Yds.
PLAN MIXED ASPHALTING	16	TONS.
1/2" EXPANSION JOINT MATERIAL	88	Sq. Ft.
STEEL HANDRAILING	16550	Lbs.

COLORADO DEPARTMENT OF HIGHWAYS
U.S. HIGHWAY 85-87 SOUTH BOUND
NORTH ENTRANCE INTERCHANGE
A. F. A.
OVERPASS N°H-17-B.C.
STEEL HANDRAIL
APPROACH SLAB
L. BODUROFF & ASSOCIATE
CONSULTING ENGINEERS
DENVER COLORADO
Designed: N.N. Scale: as shown Sheet N° 7
Drawn: J.N. Date: 11/28/56 N° of Sheets 7
Checked: N.N.