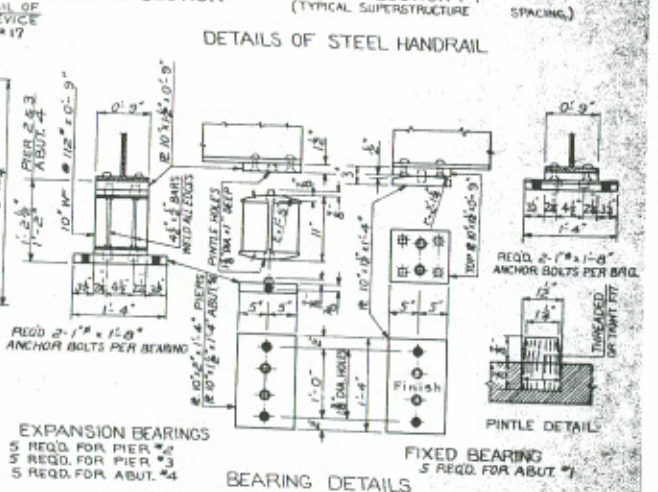
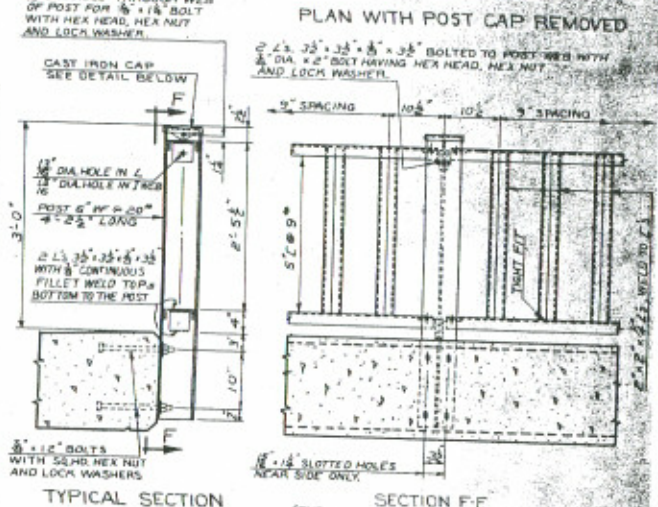
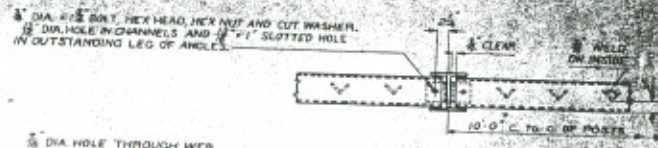
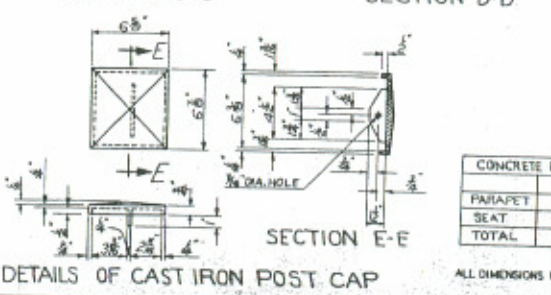
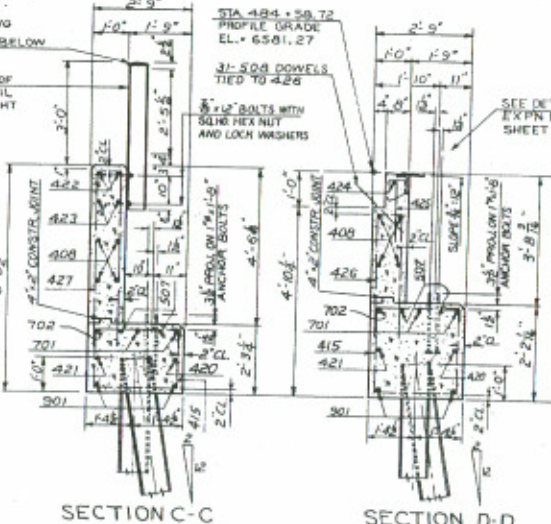
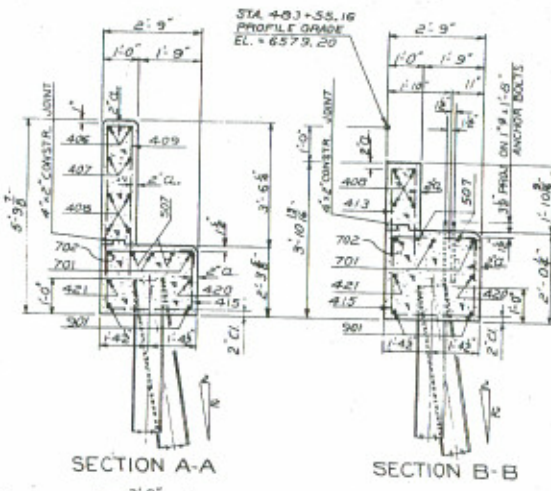
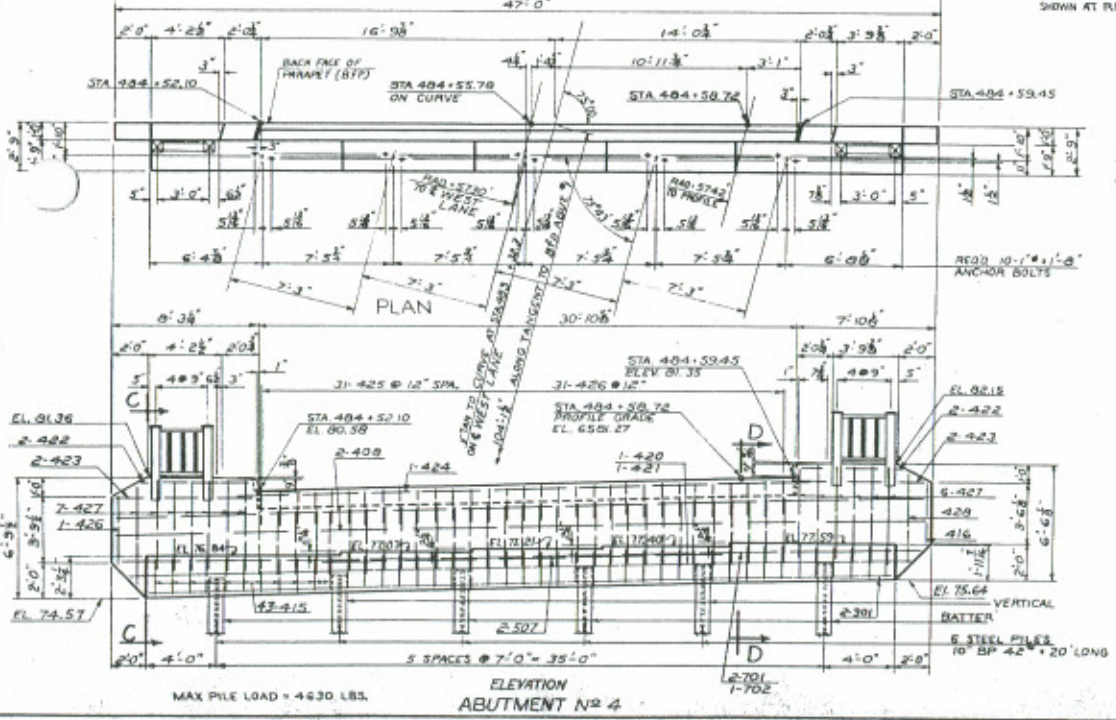
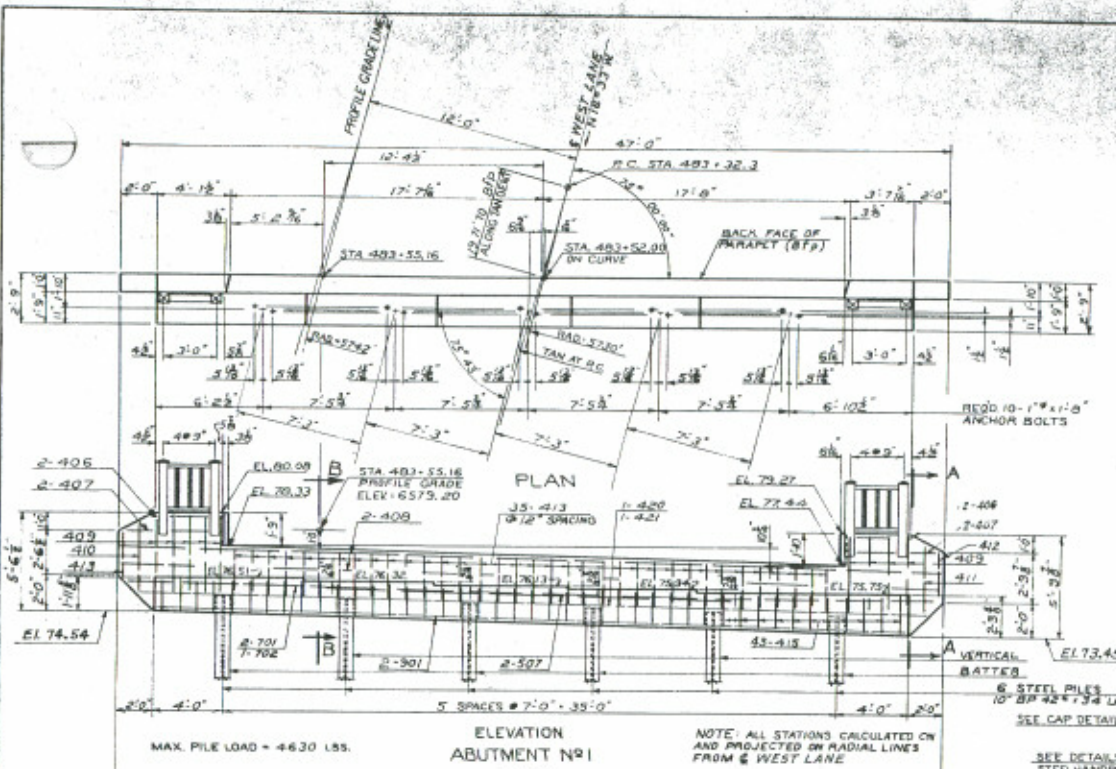


REVISIONS

FED. ROAD DIST. NO.	DISTRICT	PROJECT NO.	SHEET NO.	TOTAL SHEETS
9	COLO.	FLOOD CONTROL UNIT 140-2	103	



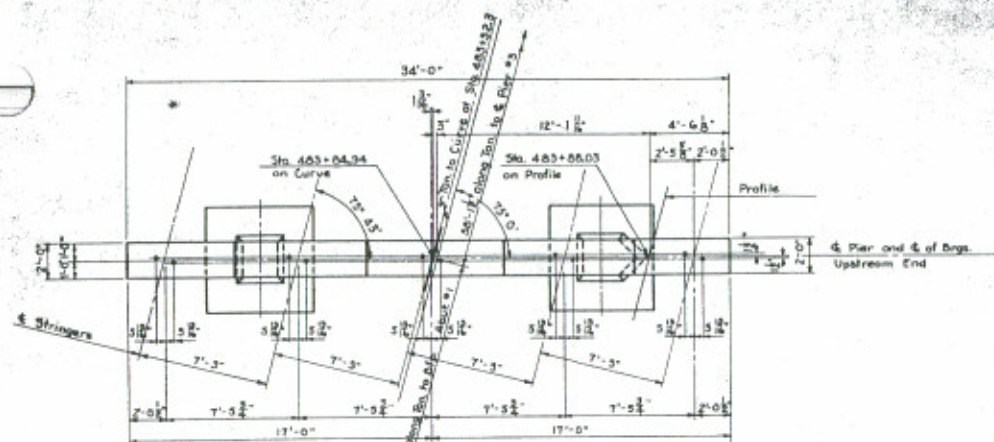
	ABUT. NO. 1	ABUT. NO. 4
PARAPET	4.10 CUYD	7.00 CUYD
SEAT	3.10 CUYD	9.10 CUYD
TOTAL	7.20 CUYD	16.10 CUYD

**COLORADO**  
 DEPARTMENT OF HIGHWAYS  
 3 SPAN (31, 39, 31) CONTINUOUS  
 CONCRETE SLAB & BEAM BRIDGE  
 30'-0" CLEAR ROADWAY 75° SKEW  
 DETAILS OF ABUT. NO. 4  
 BEARING AND STEEL HANDRAIL DETAILS  
 Areas: BLACK SQUARE, CHIEF ENGINEER  
 Sta. 483+50.0 to 484+50.0  
 Near: MUSTED See: 10, 11, 12, 13, 14, 15, 16, 17, 18, 19, 20, 21, 22, 23, 24, 25, 26, 27, 28, 29, 30, 31, 32, 33, 34, 35, 36, 37, 38, 39, 40, 41, 42, 43, 44, 45, 46, 47, 48, 49, 50, 51, 52, 53, 54, 55, 56, 57, 58, 59, 60, 61, 62, 63, 64, 65, 66, 67, 68, 69, 70, 71, 72, 73, 74, 75, 76, 77, 78, 79, 80, 81, 82, 83, 84, 85, 86, 87, 88, 89, 90, 91, 92, 93, 94, 95, 96, 97, 98, 99, 100

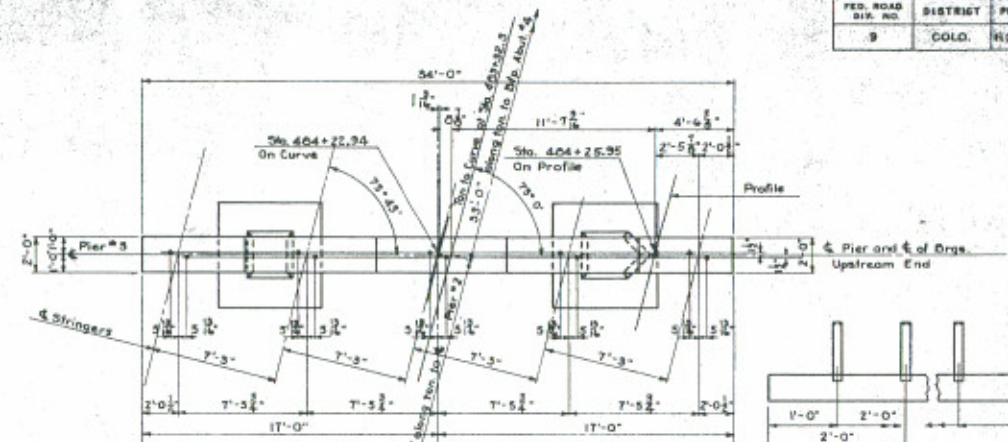
Designed by EFS  
 Made by LWF  
 Checked by [Signature]  
 Approved by [Signature]  
 Date: 10/18/53

ALL DIMENSIONS NOT SHOWN AS "CL." (CLEAR) ARE TO FACE OF BARS.  
 STRUCTURE NO. H-17-L

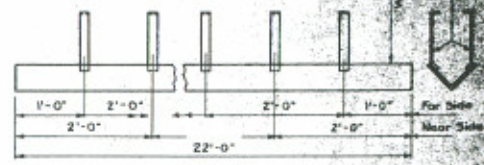
FED. ROAD DIST. NO.	DISTRICT	PROJECT NO.
9	COLO.	Highway 2



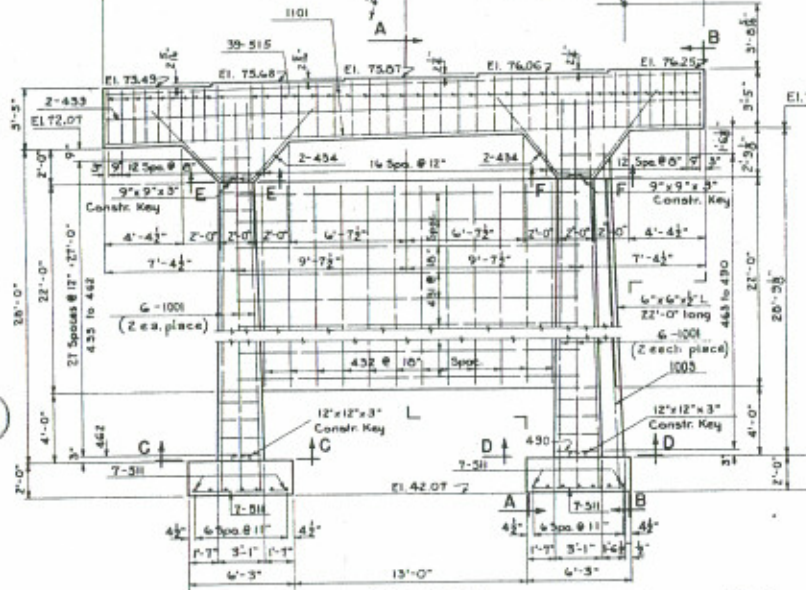
PLAN Sta. 403+55.03 Grade Elev. = 73.94



PLAN Sta. 404+25.95 Grade El. = 80.47



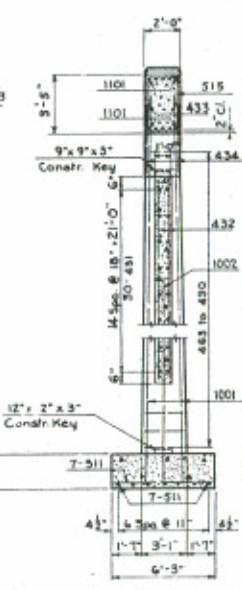
PIER NOSING



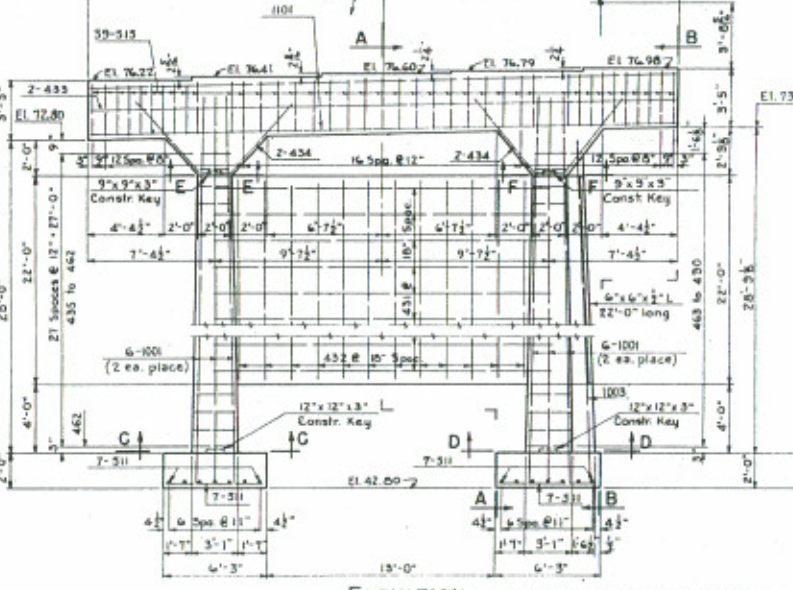
ELEVATION PIER NO. 2

Max. Footing Pressure = 5330 Lbs. per Sq. Ft.

Note: All Stations calculated on and Projected from & West Lane.

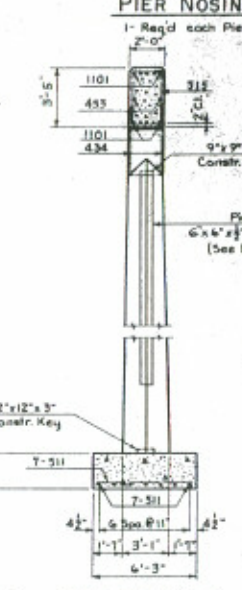


SECTION A-A

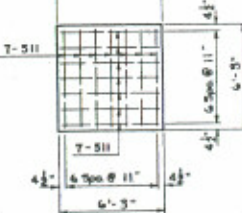


ELEVATION PIER NO. 3

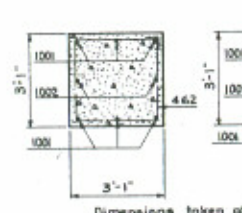
Max. Footing Pressure = 5330 Lbs. per Sq. Ft.



SECTION B-B



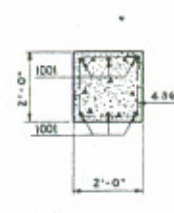
FOOTING PLAN Same for all Footings



SECTION C-C



SECTION D-D



SECTION E-E



SECTION F-F

	PIER 2	PIER 3
FOOTINGS	5.8 Cu. Yd.	5.8 Cu. Yd.
COLUMNS	14.2 "	14.2 "
CAP	10.0 "	10.0 "
WALL	13.7 "	13.7 "
TOTAL	43.7 "	43.7 "

All dimensions not shown as 'CL' are to & of bars.

**COLORADO**  
 DEPARTMENT OF HIGHWAYS  
 3 SPAN (31'-38'-3") CONTINUOUS  
 CONCRETE SLAB & I BEAM  
 30'-0" CLEAR ROWY, 70' SKEW  
 DETAILS OF PIERS 2 & 3

Address: Black Square, Grand  
 Sta. 403+02.0 to 404+50.75  
 Near Husted Sec. 18, T. 123 N. R. 60E

Designed by E.P.S. Approved by G.P. Ziegler  
 Made by L.W.F. Bridge Engineer  
 Checked by H.H.S. Inspector

GENERAL NOTES

ALL WORK SHALL BE DONE ACCORDING TO THE STANDARD SPECIFICATIONS OF THE DIVISION OF HIGHWAYS, STATE OF COLORADO, APPLICABLE TO THE PROJECT.

ALL CONCRETE SURFACES MARKED WITH THE SYMBOL  $\sigma$  AS SHOWN ON DRAWING NO. B-25 SHALL RECEIVE A CLASS 2 SURFACE FINISH.

ALL CONCRETE CHAMFERS SHALL BE 3/4" UNLESS OTHERWISE NOTED.

EXPANSION JOINT MATERIAL SHALL MEET A.S.H.T.O. SPECIFICATION W-213-65. IT SHALL NOT BE PAID FOR SEPARATELY BUT WILL BE INCLUDED IN THE WORK.

SOUNDINGS AND DEPTH OF FOOTINGS ARE IN ACCORDANCE WITH THE BEST AVAILABLE DATA. WHEN DIFFERENT CONDITIONS ARE ENCOUNTERED, THE BRIDGE ENGINEER WILL INSPECT AND DETERMINE IF REDESIGN IS NECESSARY.

WHEN EXCAVATING FOR FOOTINGS, THE FINAL SIX INCHES IN DEPTH SHALL BE DONE BY HAND LABOR METHODS.

FOOTINGS IN ROCK SHALL NOT BE FORMED BUT SHALL BE PLACED AGAINST UNDISTURBED ROCK.

FOR DETAILS OF STRUCTURE EXCAVATION AND STRUCTURE BACKFILL, SEE STANDARD M-206-6A.

ALL STRUCTURAL STEEL NOT OTHERWISE NOTED SHALL BE A.S.A.H.T.O. SPECIFICATION A-133 (ASTM A-36).

ALL STRUCTURAL STEEL NOT OTHERWISE NOTED SHALL BE PAINTED IN ACCORDANCE WITH SECTION 505 FOR (ALUMINUM) PAINT.

ALL BOLTS SHALL BE 3/4" DIAMETER, HIGH STRENGTH, UNLESS OTHERWISE NOTED.

NO WELDING OF ANY KIND SHALL BE PERMITTED ON THE FLANGES OF STEEL GIRDERS UNLESS SPECIFICALLY CALLED FOR ON THE PLANS.

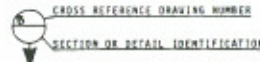
THE FOLLOWING TABLE SHOWS THE MINIMUM LAP FOR COMMON BAR SIZES.

BAR SIZE NUMBER	4	5	6	7	8	9	10	11
SPLICE LENGTH	1'-0"	1'-2"	1'-6"	2'-0"	3'-0"	3'-10"	4'-10"	6'-0"

GRADE 60 REINFORCING STEEL REQUIRED FOR #5 BARS AND LARGER

GRADE 40 OR GRADE 60 MAY BE FURNISHED FOR #4 BARS.

L. F. = EACH FACE  
N. F. = NEAR FACE  
F. F. = FAR FACE



Location of all construction joints shall be approved by the Engineer.

LOADING DATA

LEVELLOAD: A.S.H.T.O. HS-20-44 OR INTERSTATE ALTERNATE  
SEMILOAD: ASSUMES 25 LBS. PER SQ. FT. FOR BITUMINOUS PAVEMENT

DESIGN DATA

A.S.H.T.O. 1973 UNIT STRESSES, EXCEPT AS NOTED

REINFORCED CONCRETE: #5 BARS & LARGER,  $f_c = 24,000$  PSI  
EXCEPT #4 = 20,000 PSI IN TRANSVERSE  
DECK SLAB.  
#4 BARS:  $f_c = 25,000$  PSI  
 $f_s = 1,200$  PSI  $n = 10$

STRUCTURAL STEEL: A.S.H.T.O. A36 (ASTM A-36)  $f_y = 30,000$  PSI  
A.S.H.T.O. A572 (ASTM A-572)  $f_y = 27,000$  PSI

AS CONSTRUCTED  
REVISED DATE  
3/23/76

FEDERAL ROAD DISTRICT NO.	DEVISION	PROJ. NO.	SHEET NO.	TOTAL SHEETS
III	COLORADO	I 25-2 (113)	42	

REVISIONS				
(E-1)	NUM	Add Item 516, Delete		
(E-1)		Finish note		4-8-75

INDEX OF DRAWINGS

- Dwg. No. B1 General Information and Summary of Quantities
- Dwg. No. B2 General Layout
- Dwg. No. B3 Engineering Geology
- Dwg. No. B4 Elevations (H-17-J)
- Dwg. No. B5 Elevations (H-17-L)
- Dwg. No. B6 Construction Layout and Piling Layout (H-17-J)
- Dwg. No. B7 Construction Layout and Piling Layout (H-17-L)
- Dwg. No. B8 Abutment Details (H-17-J)
- Dwg. No. B9 Abutment Details (H-17-L)
- Dwg. No. B10 Abutment Details (H-17-J)
- Dwg. No. B11 Abutment Details (H-17-L)
- Dwg. No. B12 Abutment Details (H-17-L)
- Dwg. No. B13 Abutment Details (H-17-L)
- Dwg. No. B14 Pier Details (H-17-J)
- Dwg. No. B15 Pier Details (H-17-L)
- Dwg. No. B16 Pier Details
- Dwg. No. B17 Superstructure Details (H-17-J)
- Dwg. No. B18 Superstructure Details (H-17-L)
- Dwg. No. B19 Superstructure Details
- Dwg. No. B20 Superstructure Details
- Dwg. No. B21 Superstructure Details
- Dwg. No. B22 Superstructure Details (H-17-J)
- Dwg. No. B23 Superstructure Details (H-17-L)
- Dwg. No. B24 Bridge Rail Type 5
- Dwg. No. B25 Approach Slab Details and Miscellaneous Details
- Dwg. No. B26 Structure Number Standard

Item No.	Description	Unit	Structure Number H-17-J						Structure Number H-17-L						Total H-17-J	Total H-17-L
			Super-struct.	Abut 1	Pier 2	Pier 3	Abut 4	Total	Super-struct.	Abut 1	Pier 2	Pier 3	Abut 4	Total		
			202	Removal of Portions of Present Struct.	Ea.											
	" As Const.														1	2
206	Structure Excavation	Cu.Yd.		20	20	20	20	80		20	20	20	20	80	160	160
	" As Const.							80						80	160	160
206	Structure Backfill (Class 2)	Cu.Yd.		10	15	15	10	50		10	15	10	10	45	95	95
	" As Const.							50						45	95	95
403	Hot Bituminous Pavement (Gr. E)	Ton	64					64	64					64	128	128
	" As Const.															
502	Drilling Hole to Facilitate Pile Driving	Lin.Ft.		30				30					20	50	100	100
	" As Const.			0				0	0				0	0	0	0
502	Steel Piling (HP 10 x 42)	Lin.Ft.	76	66	67	64	240	54	50	44	30	180	420	420	420	420
	" As Const.		71.3	66.4	62.2	44.2	244.3	58.4	47.2	63.8	32.7	185.3	415.4	415.4	415.4	415.4
506	Riprap	Cu.Yd.	25	25			50		27	25			55	105	105	105
	" As Const.						50						55	105	105	105
509	Paint Existing Structure	Ea.					1						1	2	2	2
	" As Const.						1						1	2	2	2
509	Structural Steel	Lb.	21,190	80	680	680	920	22,950	21,170	80	330	330	320	22,230	45,180	45,180
	" As Const.						22,950							22,230	45,180	45,180
509	Structural Steel (Galvanized)	Lb.	4,390					4,390	4,390					4,390	8,780	8,780
	" As Const.							4,390						4,390	8,780	8,780
515	Waterproofing (Membrane)	Sq.Yd.	161					161	162					162	323	323
	" As Const.							161	162					162	323	323
601	Concrete, Class A (Bridge)	Cu.Yd.		5.5	16.7	16.7	6.2	45.1		5.2	17.7	17.7	6.5	47.1	92.2	92.2
	" As Const.						45.1							47.1	92.2	92.2
601	Concrete, Class D (Bridge)	Cu.Yd.	35.6					35.6	36.5					36.5	72.1	72.1
	" As Const.						35.6		36.5					36.5	72.1	72.1
602	Reinforcing Steel	Lb.	10,310	655	1845	1845	700	15,355	10,345	655	2000	2000	700	15,700	31,055	31,055
	" As Const.						15,355							15,700	31,055	31,055
606	Guard Rail Type 5A	Lin.Ft.	127					127	128					128	255	255
	" As Const.							127	128					128	255	255
502	Steel Pile Cut Off	Lin.Ft.						79						121	200	200

- ① W10 x 42 or HPS10 x 42 may be used in lieu of HP10 x 42.
- \* Includes 9' for 3 welds
- ② 9" Stone Size.
- \* INCLUDED IN ROADWAY QUANTITIES      \* DELETED BY W.O. #05543

Item No.	Description	Unit	APPROACH SLAB QUANTITIES				As Const.
			Str. No. H-17-J		Str. No. H-17-L		
			Abut 1	Abut 4	Abut 1	Abut 4	
58	Concrete	Cu.Yd.	4.1	5.1	5.1	4.1	18.4
63	Reinforcing Steel	Lb.	475	605	605	475	2160

The above quantities are included in Roadway Summary.

**IHLENFELDT PETERSON AND HANEY**  
INCORPORATED  
structural engineers  
2145 s. clement st.  
denver, color 80222  
758-4349

Reviewed by  
**P. Chermak**  
Bridge Engineer Date 3/1/76

DIVISION OF HIGHWAYS				
GENERAL INFORMATION SUMMARY OF QUANTITIES				
Station	483+64.46	to	484+70.19	(H-17-J)
Station	483+52.00	to	484+55.78	(H-17-L)
Near Colo. Spgs. Sec. 16	T. 125	R. 66 W		
Designer	D. Peterson	Structure	H-17-J	
Detailer	B. Waitan	Numbers	H-17-L	
Drawing Number	B 1	of	26	Drawings

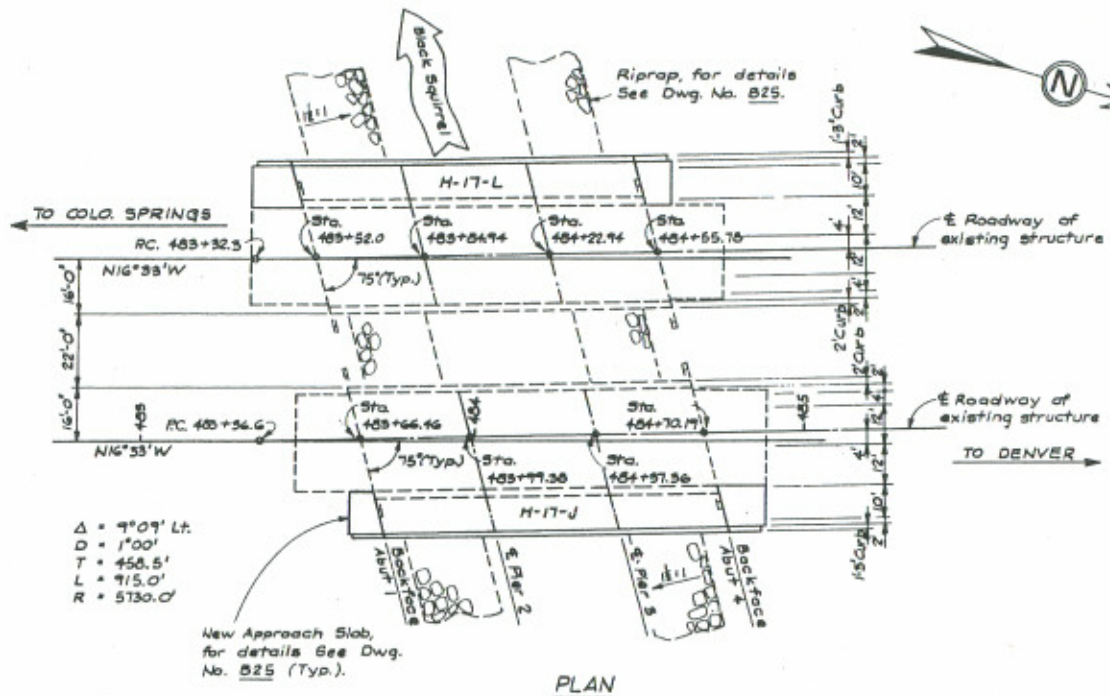
(11-1-74)

AS CONSTRUCTED  
NO REVISIONS DATE 3/23/76

FEDERAL ROAD DISTRICT	PROJ. NO.	SHEET NO.	TOTAL SHEETS
III COLORADO	I 25-2(113)	43	

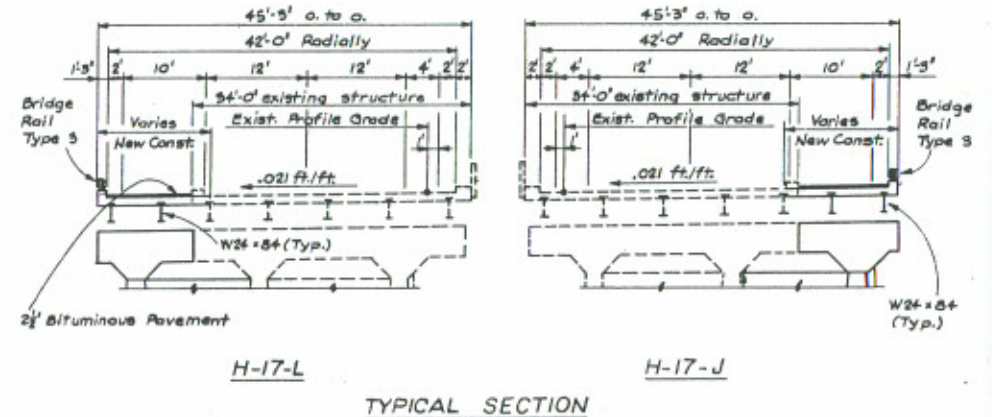
REVISIONS	



$\Delta = 9^{\circ}09'$  Lt.  
D = 1'00'  
T = 450.5'  
L = 715.0'  
R = 5730.0'

New Approach Slab,  
for details See Dwg.  
No. B25 (Typ.).

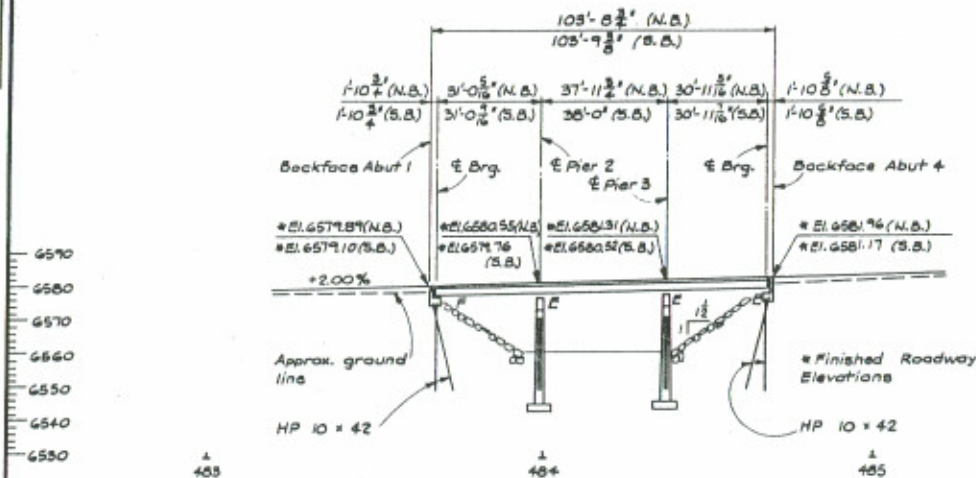
PLAN



H-17-L

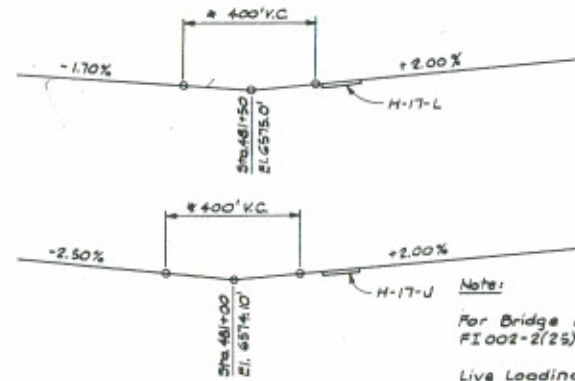
H-17-J

TYPICAL SECTION



SECTION TAKEN AT  $\Phi$  ROADWAY OF EXIST. STR. NO. H-17-J

Note: Section of  $\Phi$  Roadway of Exist. Str. No. H-17-L similar except as noted.



PROFILE GRADE DIAGRAMS

\* Adjust elevations of roadway to match new structure elevations.

Note:  
New portion of Piers shall be founded on HP 10 x 42's.

For estimated pile lengths at Abutments and Piers, See Dwg. Nos. B6 and B7.

Note:  
For Bridge Hydraulics See Project FI002-2(25) Unit #2.

Live Loading HS 20-44 or Interstate Alternate.

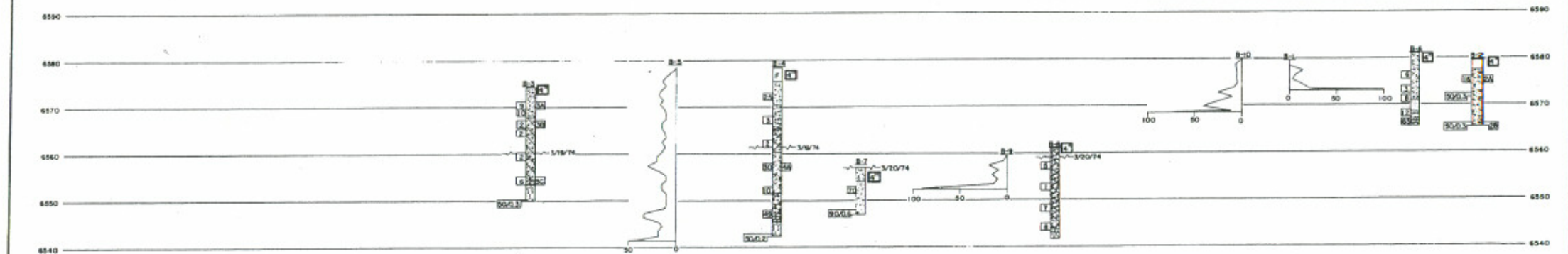
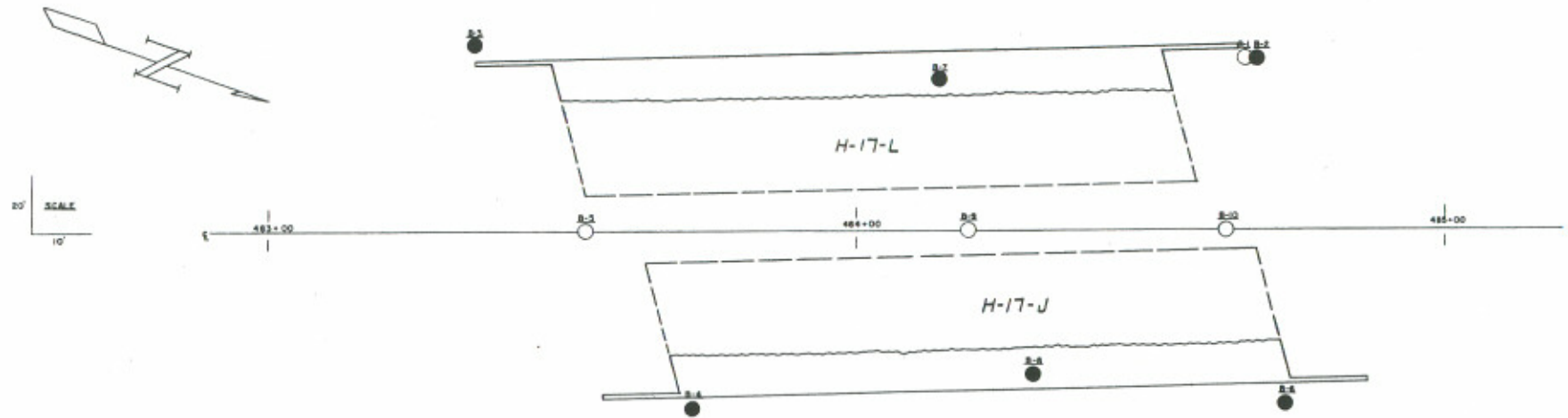
DIVISION OF HIGHWAYS

GENERAL LAYOUT

Designer D. Peterson	Structure Numbers H-17-J Northbound
Detailer B. Walton	H-17-L Southbound
Drawing Number B 2	of 26 Drawings

AS CONSTRUCTED  
NO REVISIONS DATE 3/23/76

FED. ROAD DIST. NO.	DIVISION	PROJECT NO.	SHEET NO.	TOTAL SHEETS
	COLO.	I25-2 (113)	44	



Sample No.	Depth	Classification	Grading Analysis					Atterberg Limits				Flow Value	Shrinkage	Unit Weight	Triaxial Shear Strength					Dr. or Saturated				
			Coarsest	Coarse	Pass	Silt and Clay	Liquid Limit	Plasticity Index	Plasticity	Flow Value	Shrinkage				Unit Weight	Unconsolidated	Consolidated	Triaxial	Compression		Extension			
2A	3.5-5.0	GRAVELLY SAND A-1-M(2)	36	46	12	6	NV	NP	NP	5.5														
2B	13.5-14.3	SAND A-1-6(2)	12	47	33	8	NV	NP	NP	11.5														
3A	3.0-4.5	SAND A-1-6(2)	25	36	25	14	NV	NP	NP	8.4														
3B	7.0-8.5	SILTY SAND A-2-4(2)	13	23	35	29	25	19	6	13.3														
3C	20.0-20.5	CLAYEY SAND A-2-4(2)	18	24	26	32	29	19	10	20.0														
4A	20.5-22.0	GRAVELLY SAND A-1-M(2)	28	41	23	8	NV	NP	NP	13.4														

TYPE OF MATERIAL	
<input checked="" type="checkbox"/> SILTY, CLAYEY GRAVEL	<input checked="" type="checkbox"/> SANDSTONE
<input checked="" type="checkbox"/> SANDY GRAVEL	<input checked="" type="checkbox"/> SILTY SAND & GRAVEL
<input checked="" type="checkbox"/> SAND	<input checked="" type="checkbox"/> SILTSTONE
<input checked="" type="checkbox"/> FILL	<input checked="" type="checkbox"/> SILTY GRAVEL
<input checked="" type="checkbox"/> CLAYEY GRAVEL	<input checked="" type="checkbox"/> GRAVELLY CLAY
<input checked="" type="checkbox"/> CLAYSTONE	<input checked="" type="checkbox"/> SANDY, CLAYEY GRAVEL
<input checked="" type="checkbox"/> GRAVELLY, SANDY CLAY	<input type="checkbox"/> ASPHALT & CONCRETE

TEST BORING  
CLAYSTONE INTERLAYERED

CONTINUOUS PENETRATION TEST

LEGEND

- Location of Test Boring
- Location of Continuum Penetration Test
- Boring
- Auger Boring
- ◇ Core Boring

STRUCTURE NO. H-17-L & H-17-J  
DWG. NO. 2 OF 26

DIVISION OF HIGHWAYS  
STATE OF COLORADO

ENGINEERING GEOLOGY

Area: BLACK SQUIRREL CREEK

Now: COLO. SPURNS Sec. 12, T. 12, R. 66W

Made by: S.L.S. Checked by: D.L.S.

Approved by: [Signature]  
Bridge Engineer

Date: 18



DATE: 3/23/76

STR NO H-17-L OVER BLACK SQUIRREL CR.  
PROJECT NO 125-2(113)  
ELEVATIONS ARE AT TOP OF CONCRETE

**AS CONSTRUCTED**  
**NO REVISIONS** DATE 3/23/76

FEDERAL ROAD DISTRICT PROJ NO		
XXX COLORADO T25-2(113)		
REVISION		

HORIZONTAL ALIGNMENT DATA.....

DEGREE OF CURVATURE 1 9 9 .0 P.C. STATION 483+32.36 C.T. STATION 492+47.36

VERTICAL ALIGNMENT DATA.....

VERTICAL CURVE NO. 1 1 P.I. STATION 481+58.00 P.I. ELEV 6575.100 VC LENGTH 400.000 G1 -1.700000 G2 2.000000

SUPERELEVATION DATA.....

SUPERELEVATION NO. 1 1 STATION 0+ .00 RATE LEFT -.0210 RATE RIGHT .0210

DESCRIPTION OF BENT LINE	DESCRIPTION OF LINE	SKEW ANGLE OR CHORD OF BENT LINE	STATION OF INTERSECTION TO CHORD OF BENT LINE	ELEVATION AT INTERSECTION OF BENT LINE	ROADWAY ELEVATION AT INTERSECTION OF BENT LINE
END WING AB	CONSTR. CL -15 0 .0		483+46.000	6578.4526	
	WEST OUT		483+32.432	6577.9177	
	WEST IN		483+32.789	6577.9561	
	CL NEW G1		483+32.980	6577.9623	
	CL NEW G2		483+34.588	6578.1259	
	CL EX. GDR		483+38.205	6578.2826	
	CL EX. STR		483+48.000	6578.6529	
	TAN TO POC		483+48.811	6578.6537	
	PROF'ILE GR		483+43.191	6578.9660	
BP ABUT 1-REF	CONSTR. CL -15 0 .0		483+52.000	6578.8888	
	WEST OUT		483+44.496	6578.1461	
	WEST IN		483+44.830	6578.1708	
	CL NEW G1		483+45.095	6578.1968	
	CL NEW G2		483+46.680	6578.3538	
	CL EX. GDR		483+48.201	6578.5111	
	CL EX. STR		483+52.000	6578.8888	
	TAN TO POC		483+52.818	6578.8898	
	PROF'ILE GR		483+48.184	6579.2933	
CL BRW ABUT 1	CONSTR. CL -15 0 .0		483+53.000	6579.9259	
	WEST OUT		483+46.402	6578.1834	
	WEST IN		483+46.735	6578.2162	
	CL NEW G1		483+46.995	6578.2329	
	CL NEW G2		483+48.580	6578.3902	
	CL EX. GDR		483+52.000	6578.8888	
	CL EX. STR		483+52.000	6578.8888	
	TAN TO POC		483+57.358	6579.2411	
	PROF'ILE GR		483+48.800	6579.4911	
17 10 PT.+ 1	CONSTR. CL -15 0 .0		483+57.803	6578.9881	
	WEST OUT		483+49.526	6578.2453	
	WEST IN		483+50.281	6578.2782	
	CL NEW G1		483+50.529	6578.2942	
	CL NEW G2		483+51.010	6578.3177	
	CL EX. GDR		483+53.205	6578.4100	
	CL EX. STR		483+57.803	6578.9881	
	TAN TO POC		483+57.026	6578.9944	
	PROF'ILE GR		483+49.156	6579.3631	
27 10 PT.+ 1	CONSTR. CL -15 0 .0		483+62.125	6579.1123	
	WEST OUT		483+52.000	6578.3177	
	WEST IN		483+52.980	6578.3406	
	CL NEW G1		483+53.135	6578.3559	
	CL NEW G2		483+54.252	6578.5134	
	CL EX. GDR		483+56.312	6578.6718	
	CL EX. STR		483+62.125	6579.0562	
	TAN TO POC		483+62.125	6579.0529	
	PROF'ILE GR		483+53.298	6579.3851	
47 10 PT.+ 1	CONSTR. CL -15 0 .0		483+62.321	6579.1744	
	WEST OUT		483+55.771	6578.3762	
	WEST IN		483+56.102	6578.4030	
	CL NEW G1		483+56.251	6578.4177	
	CL NEW G2		483+57.833	6578.5751	
	CL EX. GDR		483+59.428	6578.7331	
	CL EX. STR		483+62.321	6579.1123	
	TAN TO POC		483+62.321	6579.1154	
	PROF'ILE GR		483+54.355	6579.4271	
67 10 PT.+ 1	CONSTR. CL -15 0 .0		483+62.321	6579.1744	
	WEST OUT		483+58.073	6578.4326	
	WEST IN		483+58.223	6578.4455	
	CL NEW G1		483+59.385	6578.4785	
	CL NEW G2		483+60.945	6578.6369	
	CL EX. GDR		483+62.527	6578.7948	
	CL EX. STR		483+62.321	6579.1744	
	TAN TO POC		483+62.321	6579.1780	
	PROF'ILE GR		483+59.453	6579.4891	
87 10 PT.+ 1	CONSTR. CL -15 0 .0		483+62.014	6578.4950	
	WEST OUT		483+62.344	6578.5279	
	WEST IN		483+62.678	6578.5611	
	CL NEW G1		483+64.057	6578.6887	
	CL NEW G2		483+65.634	6578.8566	
	CL EX. GDR		483+68.426	6579.2365	
	CL EX. STR		483+62.014	6579.2468	
	TAN TO POC		483+62.014	6579.2510	
	PROF'ILE GR		483+62.014	6579.2510	

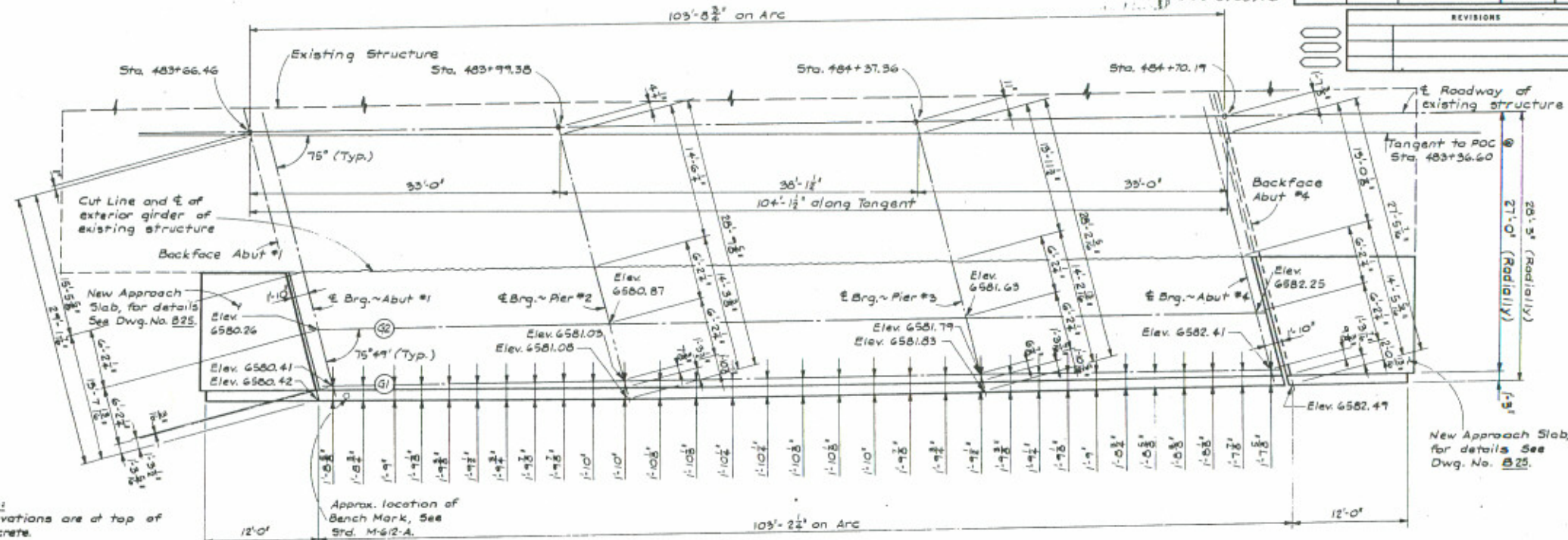
67 10 PT.+ 1	CONSTR. CL -15 0 .0		483+72.531	6579.2986	
	WEST OUT		483+65.136	6578.5575	
	WEST IN		483+65.468	6578.5903	
	CL NEW G1		483+65.996	6578.6233	
	CL NEW G2		483+67.168	6578.7469	
	CL EX. GDR		483+68.742	6578.9181	
	CL EX. STR		483+72.531	6579.2986	
	TAN TO POC		483+72.531	6579.3033	
	PROF'ILE GR		483+75.649	6579.6130	
77 10 PT.+ 1	CONSTR. CL -15 0 .0		483+75.635	6579.3867	
	WEST OUT		483+68.256	6578.6190	
	WEST IN		483+68.588	6578.6527	
	CL NEW G1		483+69.760	6578.6852	
	CL NEW G2		483+70.289	6578.7224	
	CL EX. GDR		483+71.864	6578.9799	
	CL EX. STR		483+75.635	6579.3867	
	TAN TO POC		483+75.635	6579.3913	
	PROF'ILE GR		483+78.746	6579.6749	
87 10 PT.+ 1	CONSTR. CL -15 0 .0		483+78.739	6579.4288	
	WEST OUT		483+71.376	6578.6823	
	WEST IN		483+71.728	6578.7151	
	CL NEW G1		483+71.824	6578.7271	
	CL NEW G2		483+73.391	6578.8863	
	CL EX. GDR		483+74.957	6579.0517	
	CL EX. STR		483+78.739	6579.4288	
	TAN TO POC		483+78.739	6579.4286	
	PROF'ILE GR		483+81.853	6579.7369	
97 10 PT.+ 1	CONSTR. CL -15 0 .0		483+81.842	6579.4848	
	WEST OUT		483+74.498	6578.7447	
	WEST IN		483+74.823	6578.7775	
	CL NEW G1		483+74.939	6578.7891	
	CL NEW G2		483+76.501	6578.9463	
	CL EX. GDR		483+78.065	6579.1035	
	CL EX. STR		483+81.842	6579.4848	
	TAN TO POC		483+81.842	6579.4814	
	PROF'ILE GR		483+84.961	6579.7988	
117 10 PT.+ 1	CONSTR. CL -15 0 .0		483+84.945	6579.5449	
	WEST OUT		483+77.019	6578.8071	
	WEST IN		483+77.361	6578.8398	
	CL NEW G1		483+77.854	6578.8512	
	CL NEW G2		483+79.015	6579.0083	
	CL EX. GDR		483+81.172	6579.1653	
	CL EX. STR		483+84.945	6579.5449	
	TAN TO POC		483+84.945	6579.5542	
	PROF'ILE GR		483+88.036	6579.8607	
137 10 PT.+ 1	CONSTR. CL -15 0 .0		483+88.743	6579.6229	
	WEST OUT		483+81.434	6578.8834	
	WEST IN		483+81.758	6578.9162	
	CL NEW G1		483+81.867	6578.9271	
	CL NEW G2		483+83.429	6579.0841	
	CL EX. GDR		483+84.977	6579.2411	
	CL EX. STR		483+88.743	6579.6229	
	TAN TO POC		483+88.743	6579.6305	
	PROF'ILE GR		483+91.825	6579.9365	
157 10 PT.+ 1	CONSTR. CL -15 0 .0		483+92.546	6579.6989	
	WEST OUT		483+85.250	6578.9599	
	WEST IN		483+85.580	6578.9926	
	CL NEW G1		483+85.685	6579.0032	
	CL NEW G2		483+87.237	6579.1602	
	CL EX. GDR		483+88.781	6579.3171	
	CL EX. STR		483+92.546	6579.6989	
	TAN TO POC		483+92.546	6579.7135	
	PROF'ILE GR		483+95.619	6580.0124	
177 10 PT.+ 1	CONSTR. CL -15 0 .0		483+96.347	6579.7749	
	WEST OUT		483+89.078	6579.0263	
	WEST IN		483+89.401	6579.0590	
	CL NEW G1		483+89.557	6579.0793	
	CL NEW G2		483+91.121	6579.2362	
	CL EX. GDR		483+92.597	6579.3931	
	CL EX. STR		483+96.347	6579.7749	
	TAN TO POC		483+96.347	6579.7895	
	PROF'ILE GR		483+99.412	6580.0886	
197 10 PT.+ 1	CONSTR. CL -15 0 .0		484+ .144	6579.8510	
	WEST OUT		483+92.899	6579.1127	
	WEST IN		483+93.221	6579.1454	
	CL NEW G1		483+93.321	6579.1555	
	CL NEW G2		483+94.885	6579.3124	
	CL EX. GDR		483+96.446	6579.4692	
	CL EX. STR		484+ .144	6579.8510	
	TAN TO POC		484+ .144	6579.8578	
	PROF'ILE GR		484+ 3.265	6580.1661	

57 10 PT.+ 1	CONSTR. CL -15 0 .0		484+ 3.240	6579.9270	
	WEST OUT		483+96.719	6579.1891	
	WEST IN		483+97.043	6579.2218	
	CL NEW G1		483+97.138	6579.2317	
	CL NEW G2		483+98.679	6579.3885	
	CL EX. GDR		484+ .128	6579.5453	
	CL EX. STR		484+ 3.240	6579.9270	
	TAN TO POC		484+ 3.240	6579.9456	
	PROF'ILE GR		484+ 6.493	6580.2399	
77 10 PT.+ 1	CONSTR. CL -15 0 .0		484+ 7.748	6580.0930	
	WEST OUT		484+ .539	6579.2655	
	WEST IN		484+ .866	6579.2982	
	CL NEW G1		484+ .996	6579.3080	
	CL NEW G2		484+ 2.492	6579.4648	
	CL EX. GDR		484+ 4.228	6579.6215	
	CL EX. STR		484+ 7.748	6580.0930	
	TAN TO POC		484+ 7.748	6580.0923	
	PROF'ILE GR		484+ 10.788	6580.3150	
97 10 PT.+ 1	CONSTR. CL -15 0 .0		484+ 11.547	6580.3789	
	WEST OUT		484+ 4.258	6579.3419	
	WEST IN		484+ 4.678	6579.3746	
	CL NEW G1		484+ 4.776	6579.3844	
	CL NEW G2		484+ 6.307	6579.5411	
	CL EX. GDR		484+ 7.836	6579.6977	
	CL EX. STR		484+ 11.547	6580.3789	
	TAN TO POC		484+ 11.547	6580.3968	
	PROF'ILE GR		484+ 14.579	6580.7116	
117 10 PT.+ 1	CONSTR. CL -15 0 .0		484+ 15.345	6580.1549	
	WEST OUT		484+ 6.177	6579.4183	
	WEST IN		484+ 6.496	6579.4509	
	CL NEW G1		484+ 6.592	6579.4608	
	CL NEW G2		484+ 8.120	6579.6174	
	CL EX. GDR		484+ 9.648	6579.7740	
	CL EX. STR		484+ 15.345	6580.1549	
	TAN TO POC		484+ 15.345	6580.1770	
	PROF'ILE GR		484+ 18.369	6580.4914	
137 10 PT.+ 1	CONSTR. CL -15 0 .0		484+ 19.144	6580.2309	
	WEST OUT		484+ 11.995	6579.4964	
	WEST IN		484+ 12.313	6579.5273	
	CL NEW G1		484+ 12.410	6579.5372	
	CL NEW G2		484+ 13.937	6579.6938	
	CL EX. GDR		484+ 15.345	6579.8503	
	CL EX. STR		484+ 19.144	6580.2309	
	TAN TO POC		484+ 19.144	6580.2344	
	PROF'ILE GR		484+ 22.168	6580.5432	
157 10 PT.+ 1	CONSTR. CL -15 0 .0		484+ 22.942	6580.3088	
	WEST OUT		484+ 14.811	6579.5710	
	WEST IN		484+ 15.128	6579.6036	
	CL NEW G1		484+ 15.227	6579.6137	
	CL NEW G2		484+ 16.747	6579.7702	
	CL EX. GDR		484+ 18.265	6579.9267	
	CL EX. STR		484+ 22.942	6580.3088	
	TAN TO POC		484+		

AS CONSTRUCTED  
DATE 3/23/76

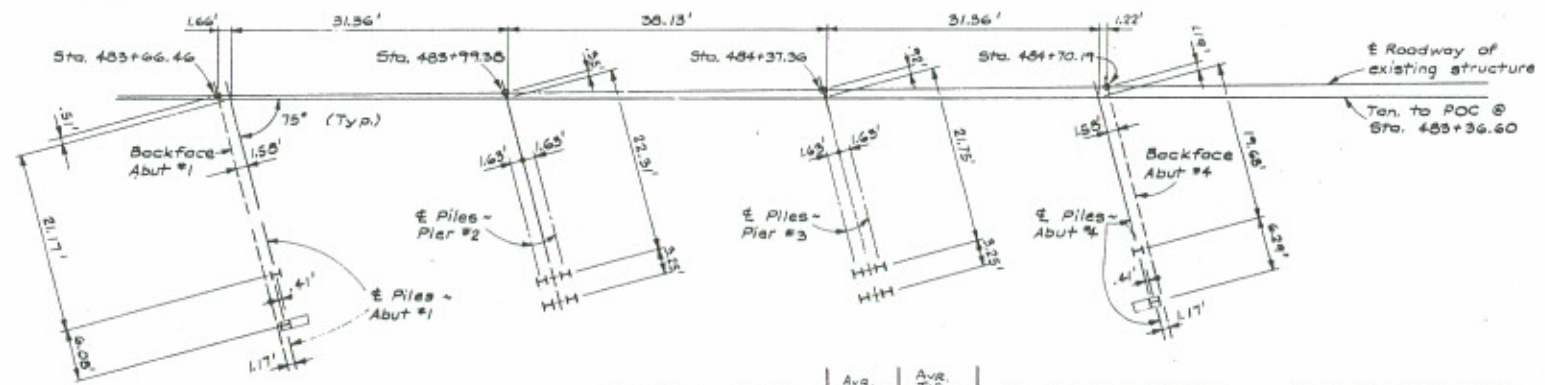
FEDERAL ROAD DISTRICT	PROJ. NO.	SHEET NO.	TOTAL SHEETS
XIII COLORADO	I 25-2(113)	47	

REVISIONS	



- Note:**
- Elevations are at top of concrete.
  - Adjust elevations to match existing structure.
  - Abutments & Piers are parallel.
  - Curb offsets are spaced at 10th points along  $\bar{c}$  of Girder.

**CONSTRUCTION LAYOUT**  
H-17-J NORTHBOUND  
Bridge Rail Type 3. See Dwg. B24 for details.



**PILING LAYOUT**  
H-17-J NORTHBOUND

Avg. Crown Length	Avg. Tide Elevation	Pile Cut-off elevations:	Estimated pile length:
17.9'	42.8'	Abutment No. 1 - 6576.0	38.00'
15.6'	41.5'	Pier No. 2 - 6556.4	16.00'
20.6'	56.7'	Pier No. 3 - 6557.1	17.00'
		Abutment No. 4 - 6577.5	15.00'

- Note:**
- All dimensions are at bottom of concrete.
  - All piling shall be HP10x42. All piles are end bearing.  
Abutment - Max. Pile Load = 217 tons.  
Pier - Max. Pile Load = 163 tons.
  - The backfaces of Abutments 1 & 4 shall be aligned with the existing backfaces.
  - Piles in Abutments 1 & 4 shall be battered 2:12 shown thus

**DIVISION OF HIGHWAYS**

**CONSTRUCTION LAYOUT**  
**PILING LAYOUT**  
**H-17-J NORTHBOUND**

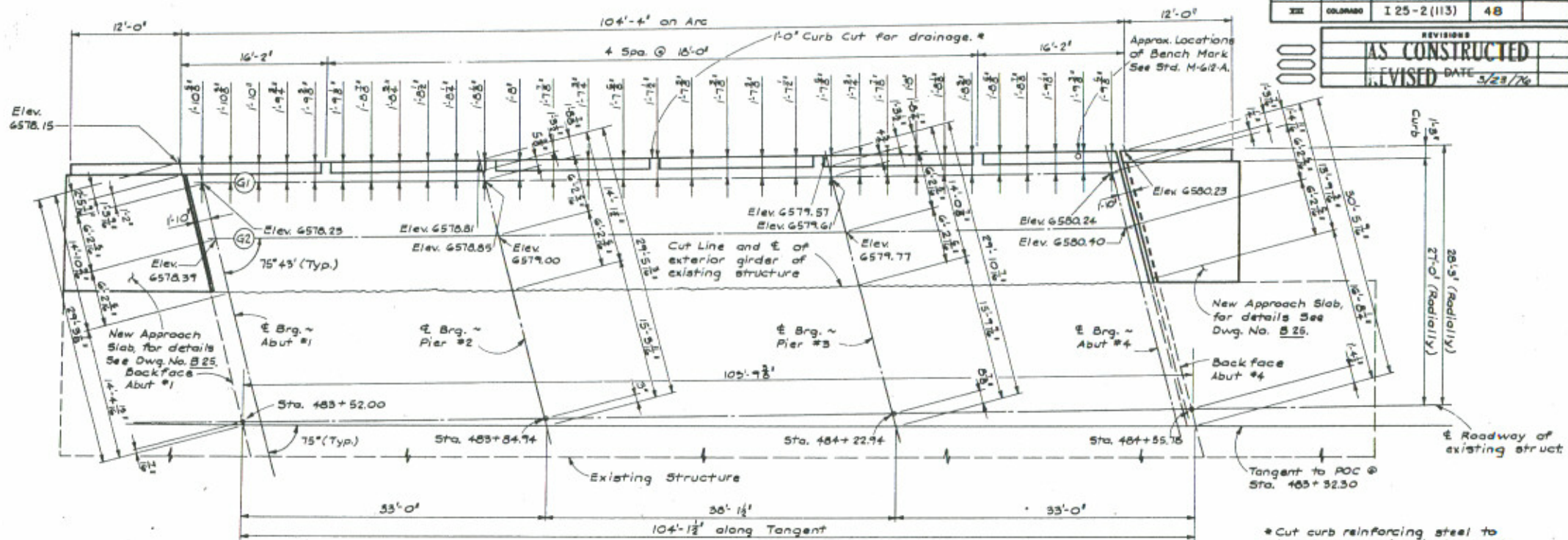
Designer D. Peterson	Structure Numbers H-17-J Northbound
Detailer B. Walton	H-17-L Southbound
Drawing Number B 6	of 26 Drawings

Revision Dates: \_\_\_\_\_ (Preliminary Stage Only)




PROJECT NO.	DISTRICT	PROJ. NO.	SHEET NO.	TOTAL SHEETS
122	COLORADO	I 25-2 (113)	48	

REVISIONS	
AS CONSTRUCTED	
REVISED	DATE 3/23/76



**CONSTRUCTION LAYOUT  
H-17-L SOUTHBOUND**

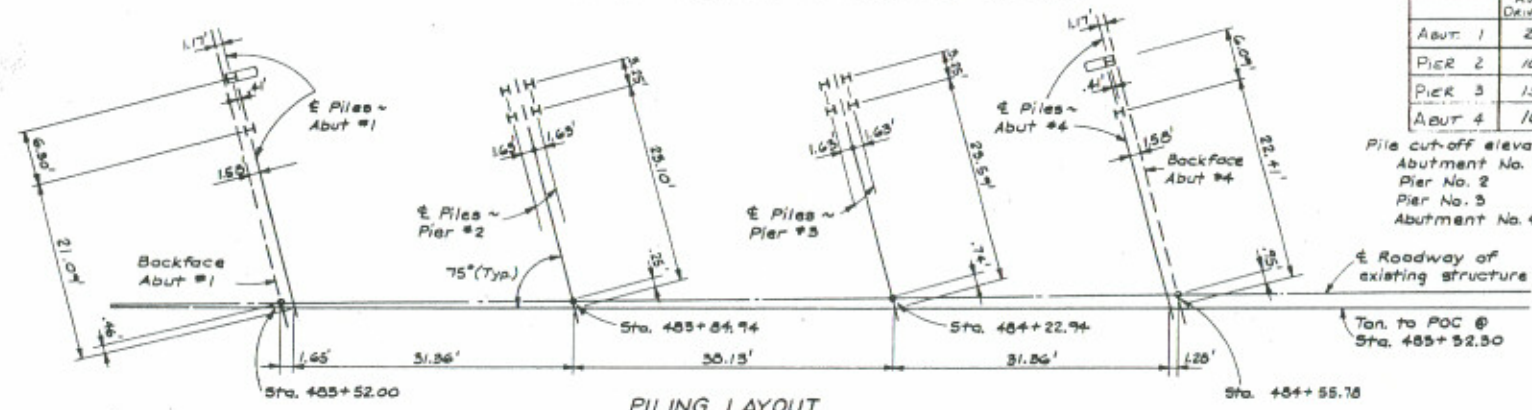
Bridge Rail Type 3. See Dwg. No. B24 for details.

For Notes See Dwg. No. B6.

	AVERAGE DRIVEN/LEN.	AVERAGE TIP ELEVATION
Abut. 1	29.3'	45.1'
Pier 2	10.8'	41.8'
Pier 3	15.2'	38.1'
Abut. 4	16.4'	57.1'

Pile cut-off elevations:      Estimated pile lengths:

Abutment No. 1 - 6574.4	30.00'
Pier No. 2 - 6552.6	13.00'
Pier No. 3 - 6553.3	11.00'
Abutment No. 4 - 6575.5	12.00'



**PILING LAYOUT  
H-17-L SOUTHBOUND**

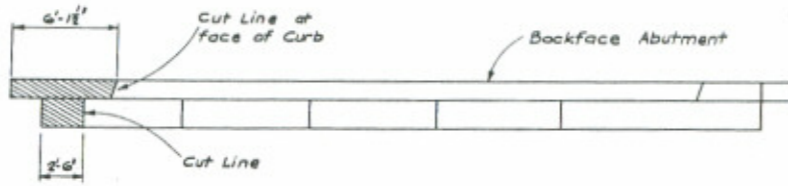
<b>DIVISION OF HIGHWAYS</b>	
<b>CONSTRUCTION LAYOUT PILING LAYOUT H-17-L SOUTHBOUND</b>	
Designer D. Peterson	Reviewer H-17-L Northbound
Detailer B. Walton	Numbers H-17-L Southbound
Drawing Number B 7	of 26 Drawings

FEDERAL ROAD DISTRICT	PROJ. NO.	SHEET NO.	TOTAL SHEETS
III	COLO. I 25-2(113)	49	

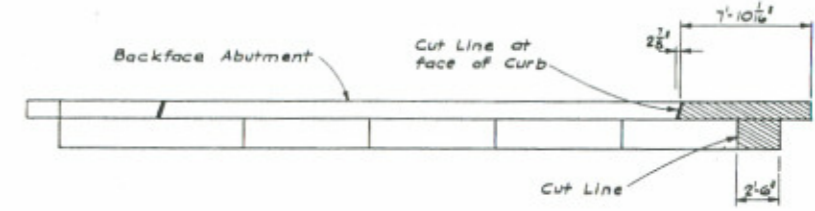
REVISIONS		

AS CONSTRUCTED  
 DATE: 3/28/76

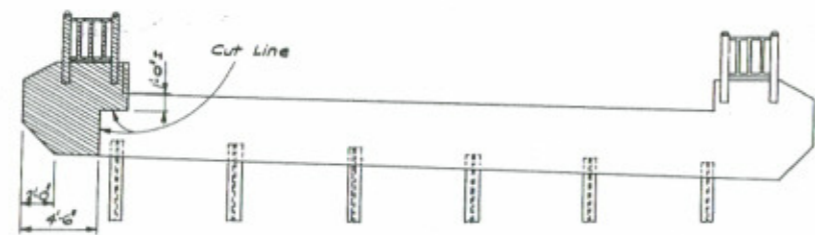
DESIGNED BY	
CHECKED BY	
APPROVED BY	
DATE	



PLAN - EXISTING ABUTMENT NO. 1  
 H-17-J NORTHBOUND

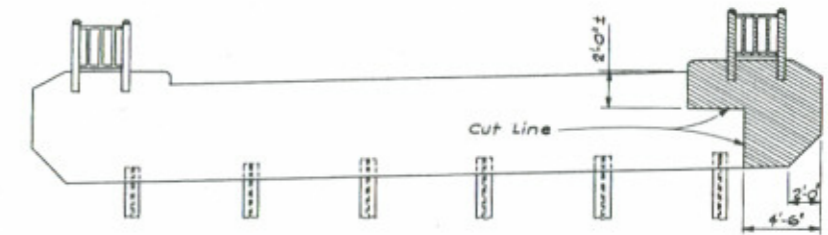


PLAN - EXISTING ABUTMENT NO. 4  
 H-17-J NORTHBOUND



ELEVATION - EXISTING ABUTMENT NO. 1  
 H-17-J NORTHBOUND

Clean and straighten existing reinforcing steel exposed by cutting concrete. Lap approx. 2'-0".



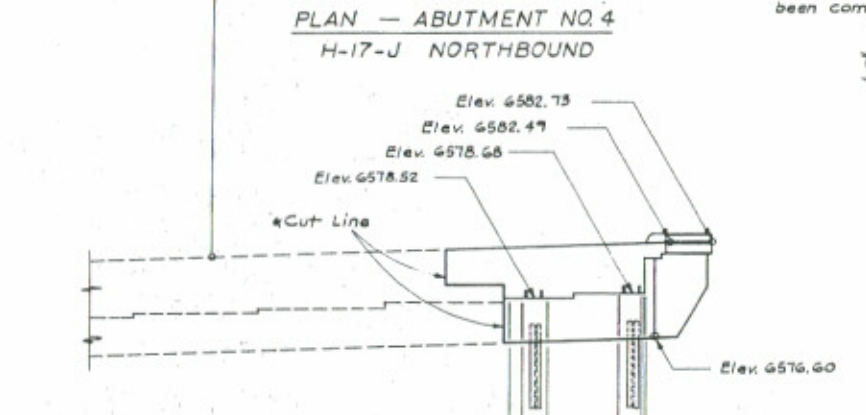
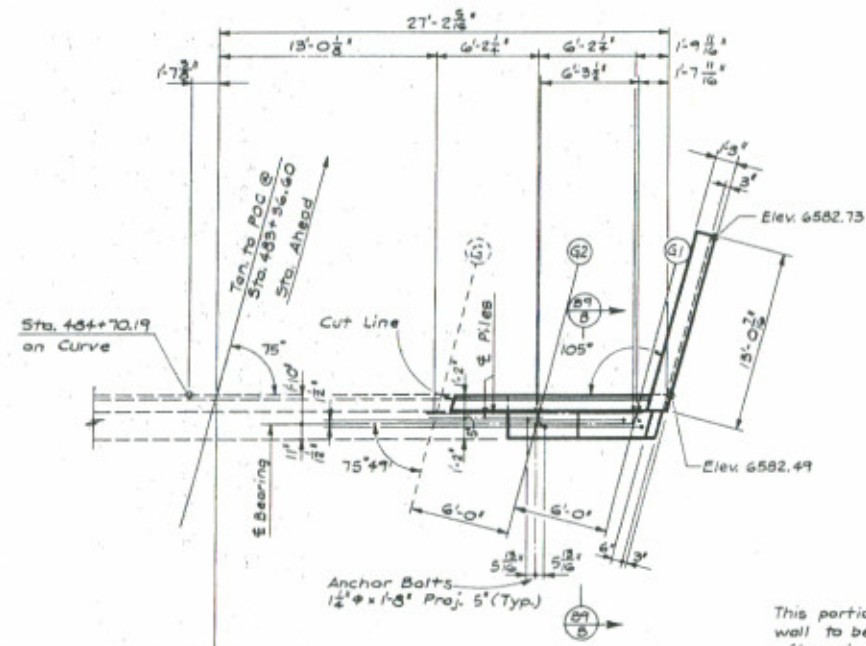
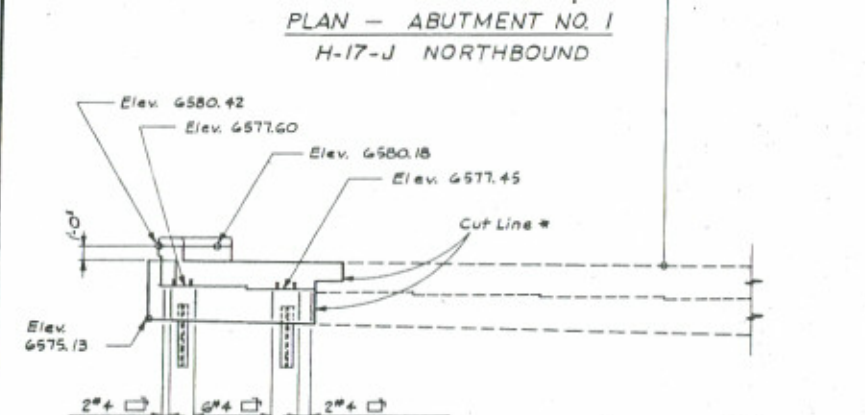
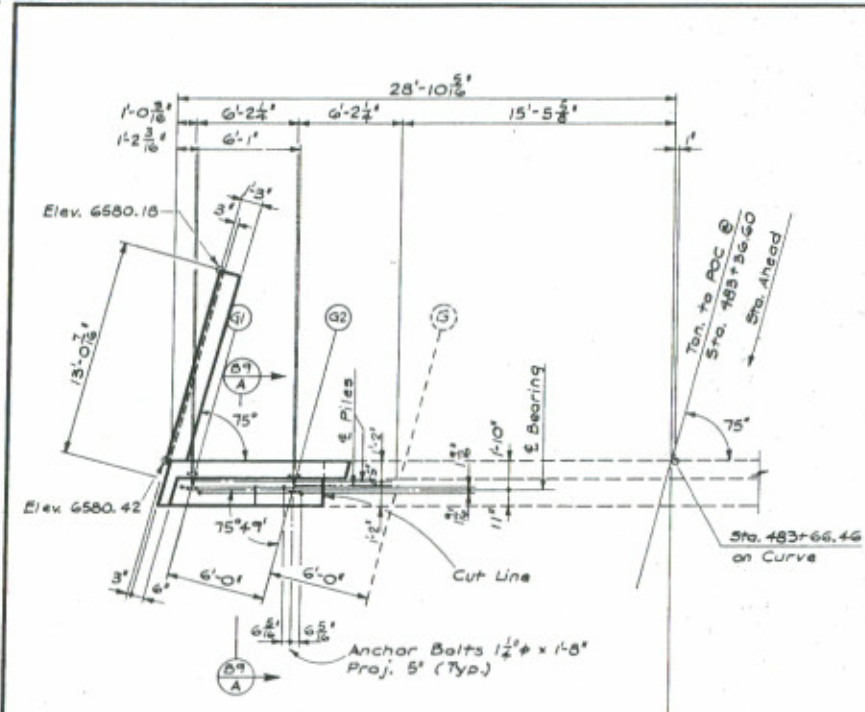
ELEVATION - EXISTING ABUTMENT NO. 4  
 H-17-J NORTHBOUND

Clean and straighten existing reinforcing steel exposed by cutting concrete. Lap approx. 2'-0".

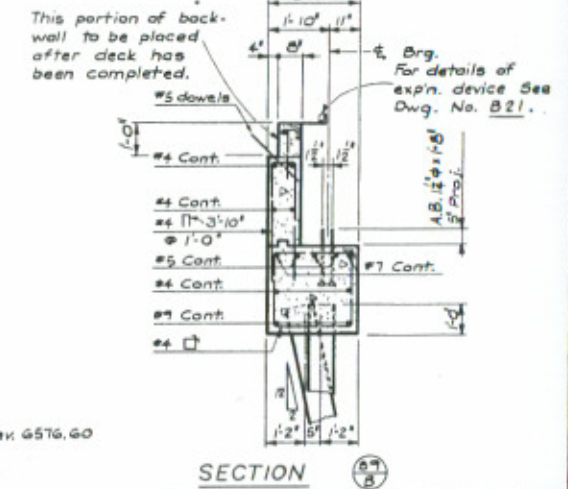
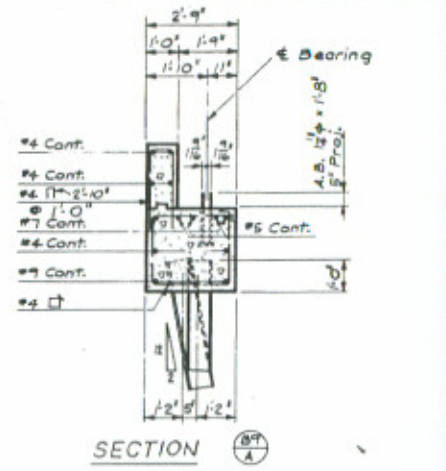
<b>DIVISION OF HIGHWAYS</b>	
ABUTMENT DETAILS H-17-J NORTHBOUND	
Designer: D. Peterson	Structure: H-17-J Northbound
Detailer: S. Walton	Number: H-17-L Southbound
Drawing Number: B 5	of 26 Drawings

FEDERAL ROAD DISTRICT	PROJ. NO.	SHEET NO.	TOTAL SHEETS
III COLORADO	I 25-2(113)	50	

REVISIONS	
AS CONSTRUCTED	DATE
NO. REVISIONS	DATE



Note:  
\* For Cut Line Locations See Dwg. No. 88.  
Coat all cut line surfaces with Epoxy bonding material. Epoxy shall be included in the Bid Price for item 601 Concrete, Class A (Bridge).



DIVISION OF HIGHWAYS

ABUTMENT DETAILS  
H-17-J NORTHBOUND

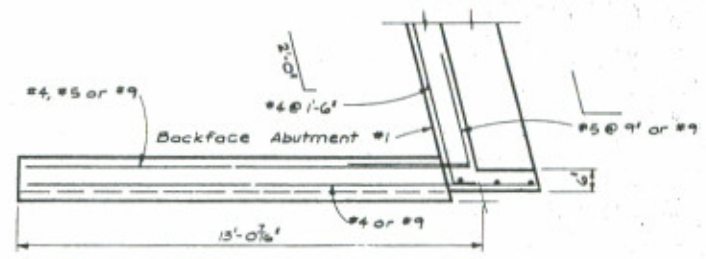
Designer D. Peterson	Structures H-17-J Northbound
Detailer B. Walton	Numbers H-17-L Southbound
Drawing Number B 9	of 26 Drawings

DATE	DESIGNED BY	CHECKED BY

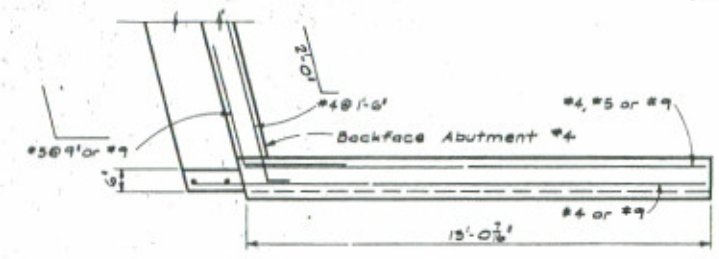
FEDERAL ROAD DISTRICT	PROJ. NO.	SHEET NO.	TOTAL SHEETS
III COLORADO	I 25-2(113)	51	

REVISIONS	

AS CONSTRUCTED  
 NO. REVISIONS DATE 3/25/76

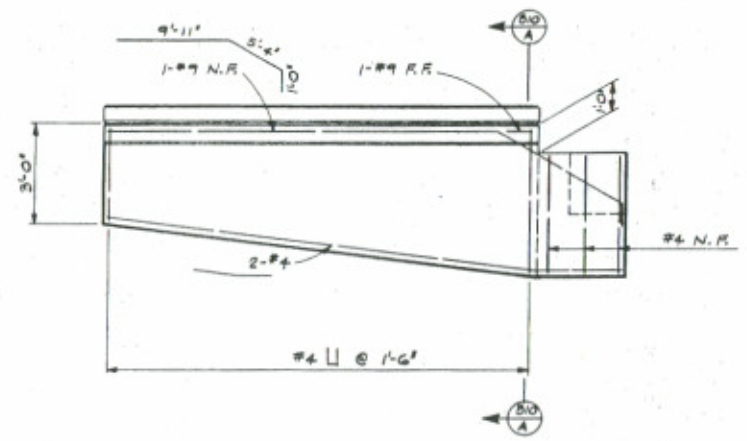


PLAN — WINGWALL @ ABUTMENT NO. 1  
 H-17-J NORTHBOUND

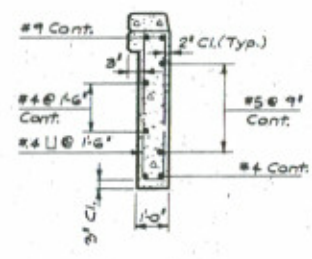


PLAN — WINGWALL @ ABUTMENT NO. 4  
 H-17-J NORTHBOUND

DATE	DESIGNED BY

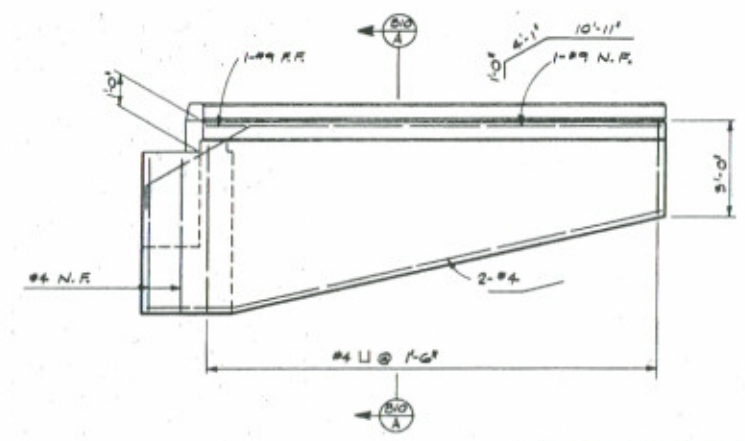


ELEVATION — WINGWALL @ ABUTMENT NO. 1  
 H-17-J NORTHBOUND



SECTION

Note:  
 For Curb dowels and reinforcing, See Dwg. No. 824.



ELEVATION — WINGWALL  
 @ ABUTMENT NO. 4  
 H-17-J NORTHBOUND

DIVISION OF HIGHWAYS			
ABUTMENT DETAILS H-17-J NORTHBOUND			
Designer	D. Peterson	Structure	H-17-J Northbound
Detailer	B. Walton	Number	H-17-L Southbound
Drawing Number	B 10	of	26 Drawings

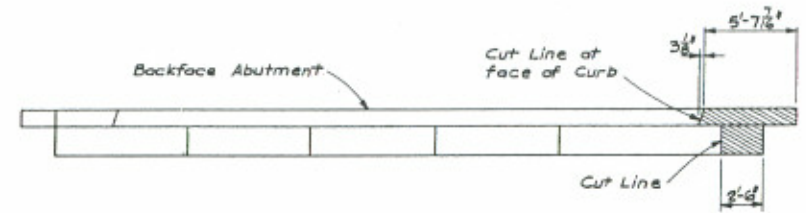
Division of Highways of Colorado  
 1000 North Lincoln Street  
 Denver, Colorado

FEDERAL ROAD DISTRICT NO.	DISTRICT	PROJ. NO.	SHEET NO.	TOTAL SHEETS
XIII	COLORADO	I 25-2(113)	52	

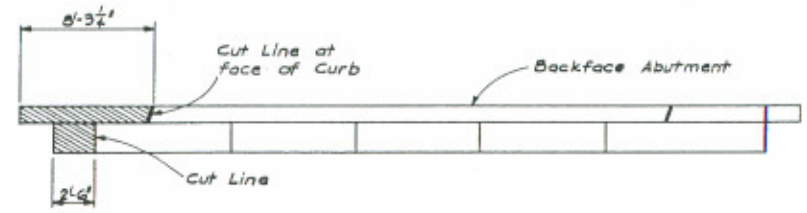
REVISIONS		

AS CONSTRUCTED  
 NO REVISIONS DATE 3/23/76

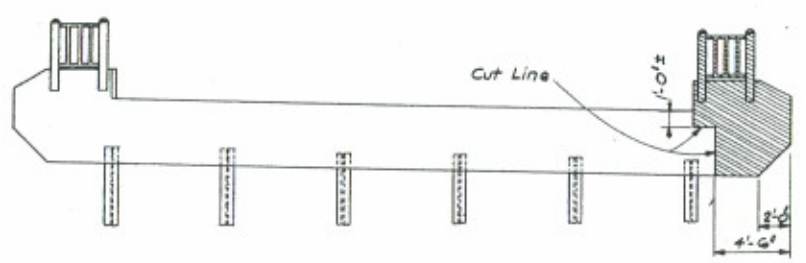
DATE	CHANGED BY	REASON FOR CHANGE



PLAN - EXISTING ABUTMENT NO. 1  
 H-17-L SOUTHBOUND

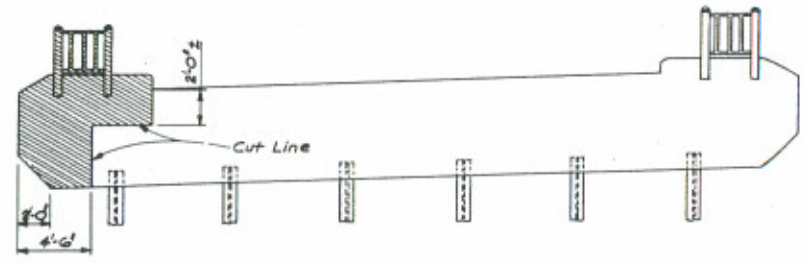


PLAN - EXISTING ABUTMENT NO. 4  
 H-17-L SOUTHBOUND



ELEVATION - EXISTING ABUTMENT NO. 1  
 H-17-L SOUTHBOUND

Clean and straighten existing reinforcing steel exposed by cutting concrete. Lap approx. 2'-0".



ELEVATION - EXISTING ABUTMENT NO. 4  
 H-17-L SOUTHBOUND

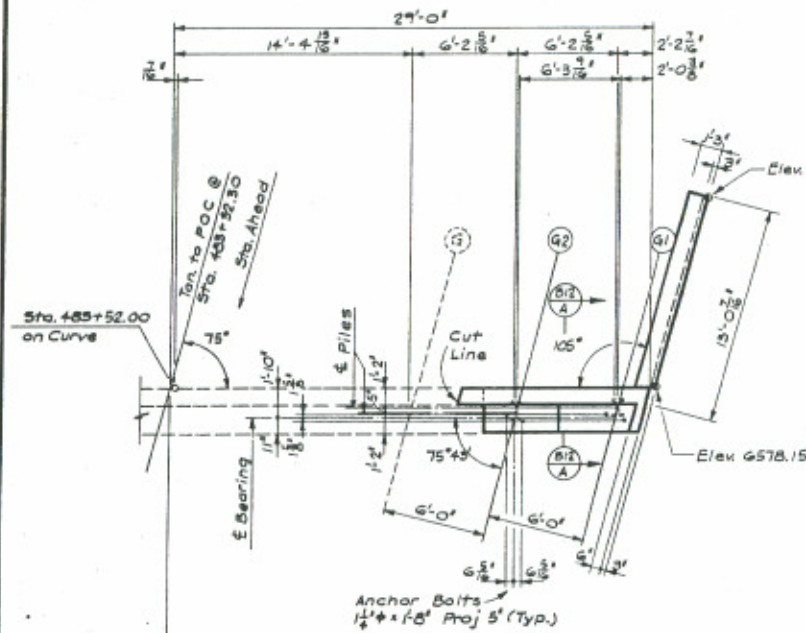
Clean and straighten existing reinforcing steel exposed by cutting steel. Lap approx. 2'-0".

<b>DIVISION OF HIGHWAYS</b>			
ABUTMENT DETAILS H-17-L SOUTHBOUND			
Designer	D. Peterson	Structure Number	H-17-L Northbound
Detailer	S. Walton	Structure Number	H-17-L Southbound
Drawing Number	B 11	of	26 Drawings

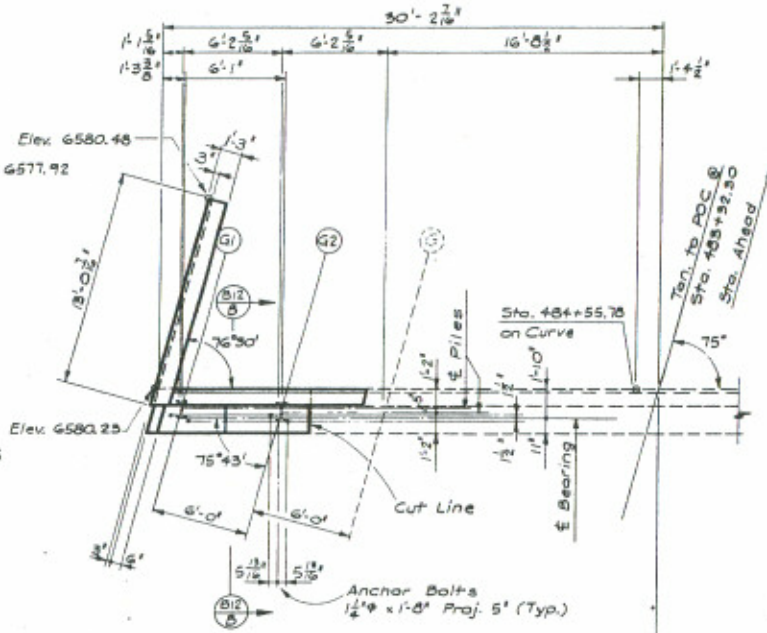
AS CONSTRUCTED  
NO REVISIONS 3/23/76

FEDERAL ROAD DISTRICT	PROJ. NO.	SHEET NO.	TOTAL SHEETS
III COLORADO	I 25-2(113)	53	

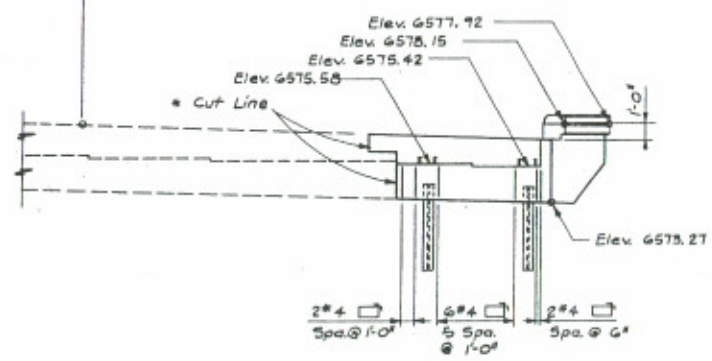
REVISIONS	

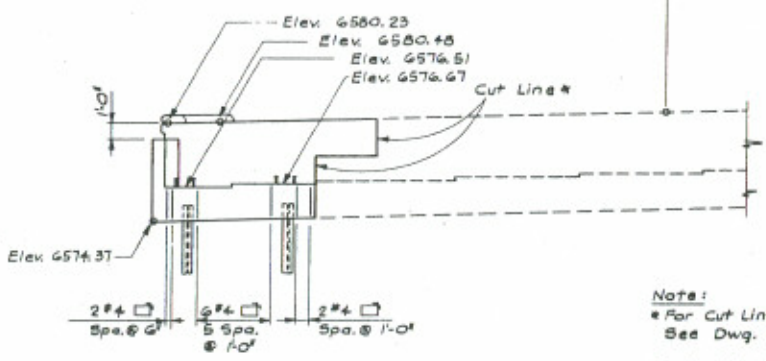
PLAN - ABUTMENT NO. 1  
H-17-L SOUTHBOUND



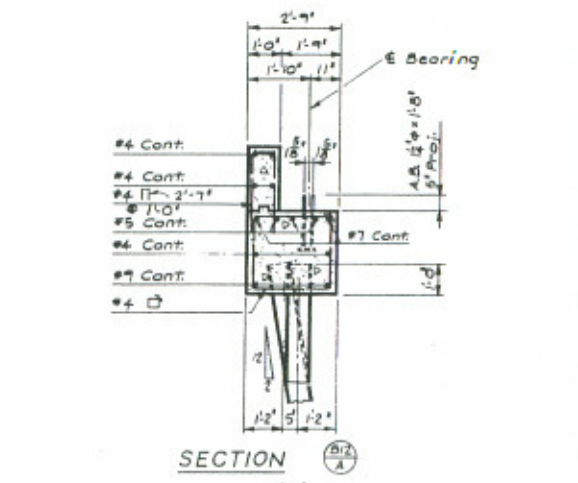
PLAN - ABUTMENT NO. 4  
H-17-L SOUTHBOUND



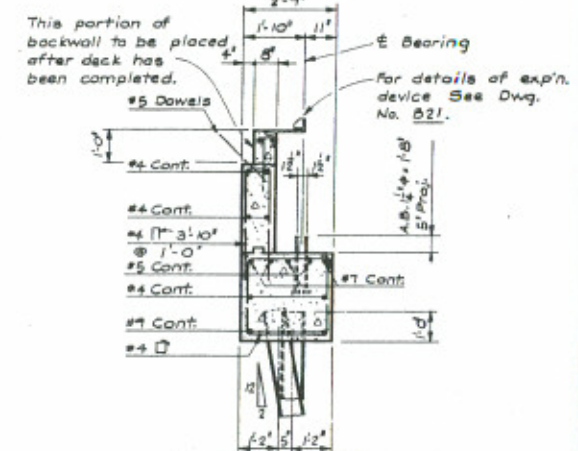
ELEVATION - ABUTMENT NO. 1  
H-17-L SOUTHBOUND



ELEVATION - ABUTMENT NO. 4  
H-17-L SOUTHBOUND



SECTION A-A



SECTION B-B

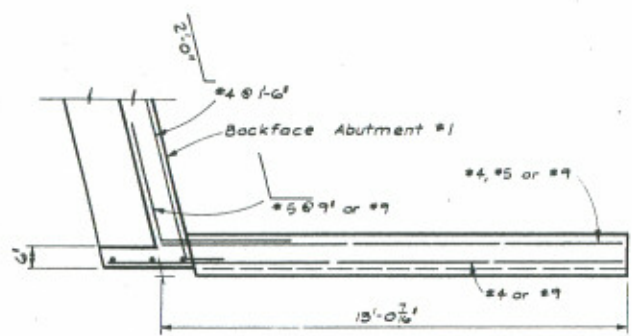
**Notes:**  
\* For Cut Line Locations See Dwg. No. B11.  
Coat all cut line surfaces with Epoxy banding material. Epoxy shall be included in the Bid Price for Item 601 Concrete, Class A (Bridge).

DIVISION OF HIGHWAYS			
ABUTMENT DETAILS H-17-L SOUTHBOUND			
Designer	D. Paterson	Structure Numbers	H-17-J Northbound H-17-L Southbound
Detailer	B. Walton	of	26 Drawings
Drawing Number	B 12		

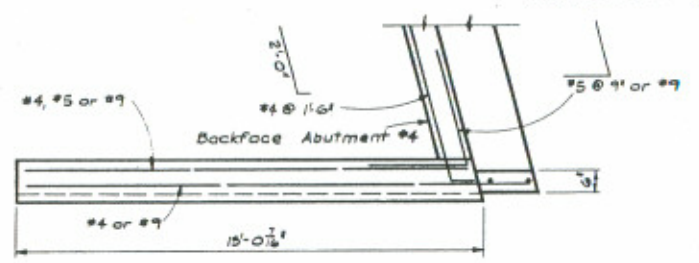
FEDERAL ROAD DISTRICT	PROJECT NO.	SHEET NO.	TOTAL SHEETS
III COLORADO	I 25-2(113)	54	

REVISIONS	

AS CONSTRUCTED  
 NO REVISIONS DATE 3/23/76

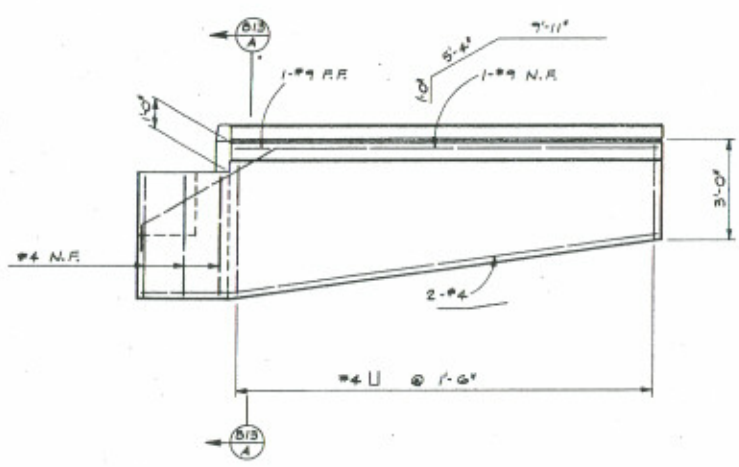


PLAN - WINGWALL @ ABUTMENT NO. 1  
 H-17-L SOUTHBOUND

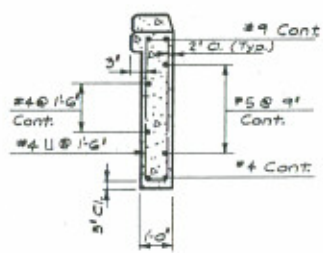


PLAN - WINGWALL @ ABUTMENT NO. 4  
 H-17-L SOUTHBOUND

REVISION NO.	DATE	CHANGED BY	APPROVED BY

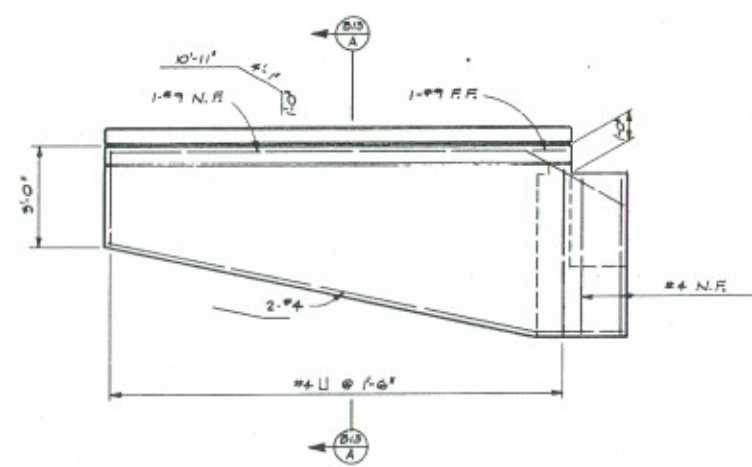


ELEVATION - WINGWALL @ ABUT. NO. 1  
 H-17-L SOUTHBOUND



SECTION B-3/A

Note:  
 For curb dowels and reinforcing, see Dwg. No. 524.



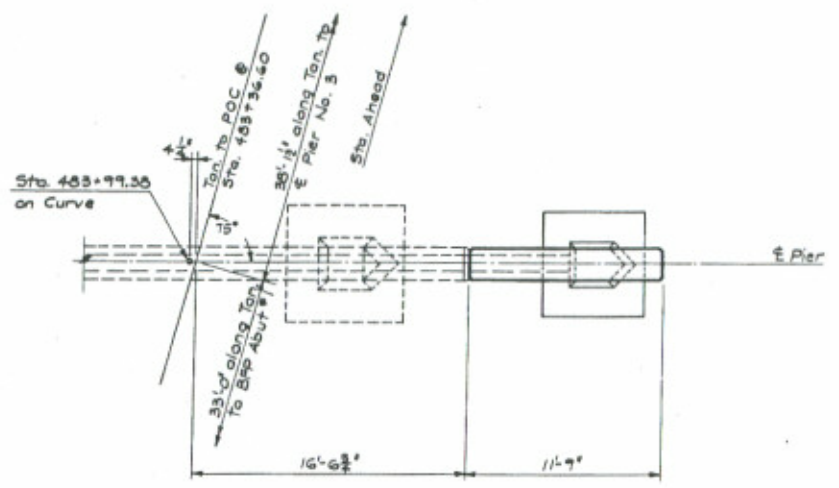
ELEVATION - WINGWALL @ ABUTMENT NO. 4  
 H-17-L SOUTHBOUND

DIVISION OF HIGHWAYS			
ABUTMENT DETAILS H-17-L SOUTHBOUND			
Designer	D. Peterson	Structure Numbers	H-17-L Northbound
Detailer	S. Walton	Structure Numbers	H-17-L Southbound
Drawing Number	B 13	of	26 Drawings

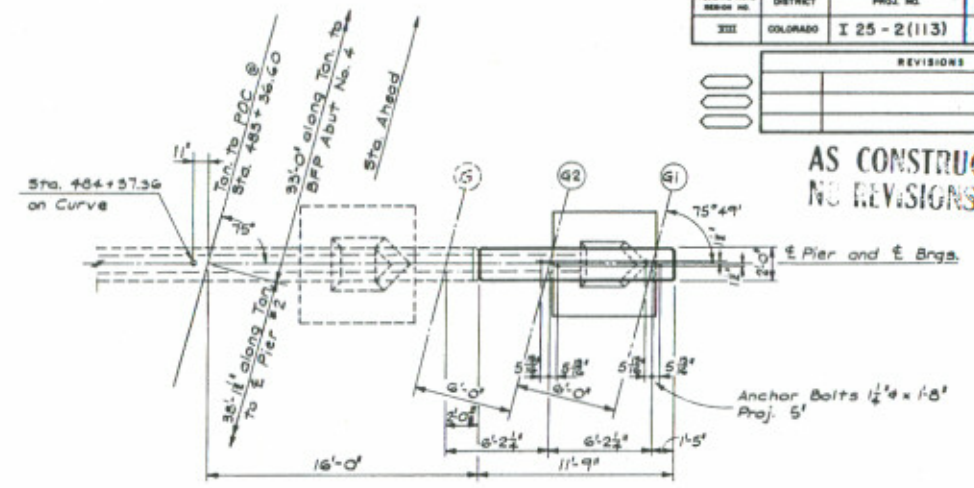
FEDERAL ROAD DISTRICT	PROJ. NO.	SHEET NO.	TOTAL SHEETS
XIII COLORADO	I 25 - 2(113)	55	

REVISIONS	

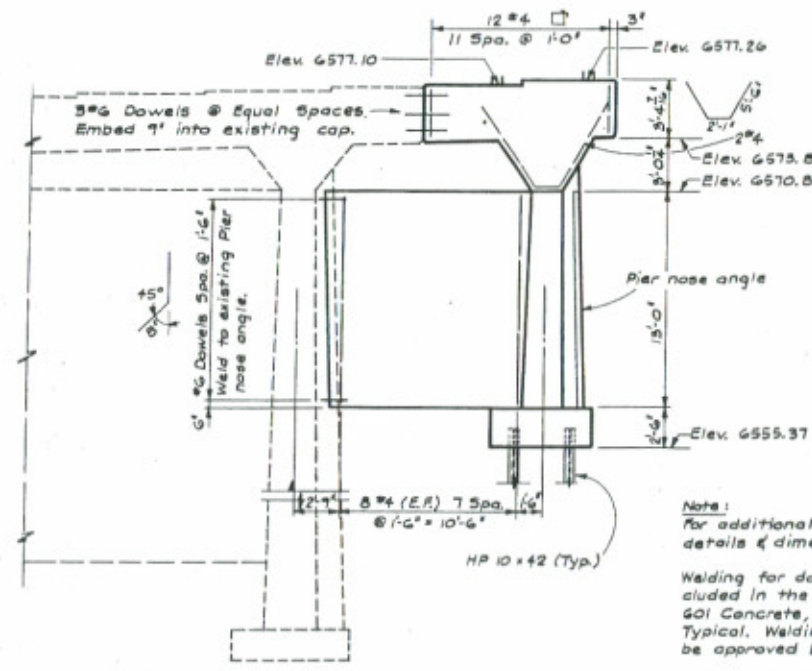
**AS CONSTRUCTED**  
**NO REVISIONS** DATE 3/23/76

**PLAN - PIER NO. 2**  
 (H-17-J Northbound)

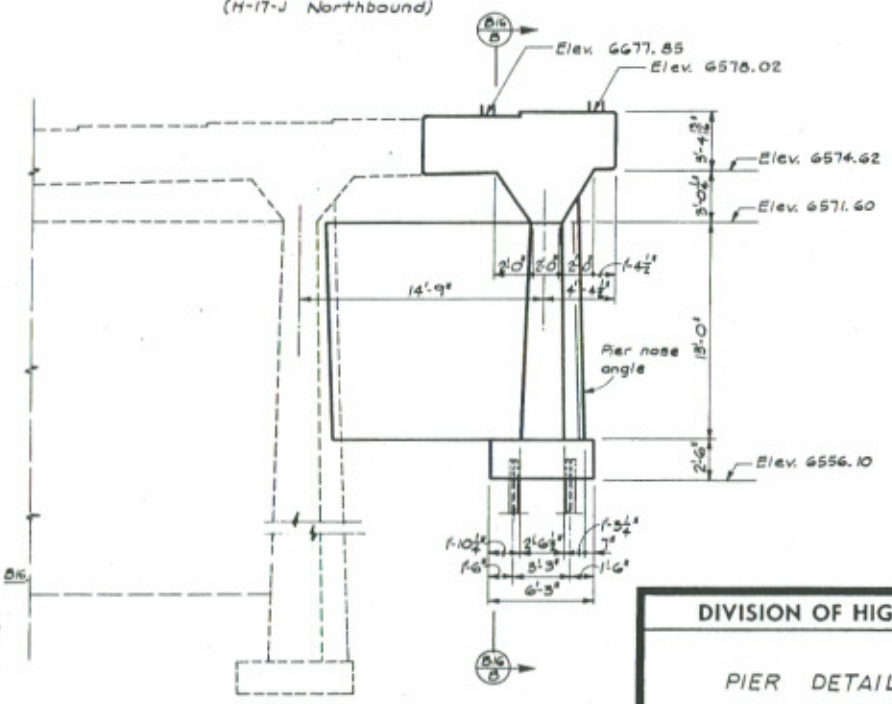


**PLAN - PIER NO. 3**  
 (H-17-J Northbound)



**ELEVATION - PIER NO. 2**  
 (H-17-J Northbound)  
 For Dimensions see Pier No. 3.

**Note:**  
 For additional reinforcing steel details & dimensions See Dwg. No. B16.  
 Welding for dowels shall be included in the bid price for Item 601 Concrete, Class 'A' (Bridge) Typical. Welding procedure shall be approved by the Engineer.  
 See Dwg. No. B25 for Pier nose angle details.



**ELEVATION - PIER NO. 3**  
 (H-17-J Northbound)  
 For Reinforcing see Pier No. 2.

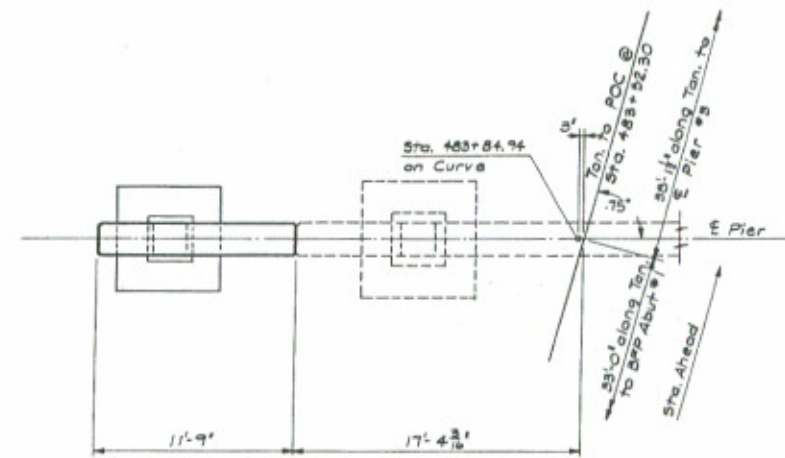
<b>DIVISION OF HIGHWAYS</b>			
<b>PIER DETAILS</b>			
<b>H-17-J NORTHBOUND</b>			
Designer	D. Peterson	Structure	H-17-J Northbound
Detailer	D. Walton	Numbers	H-17-L Southbound
Drawing Number	B 14	of	26 Drawings



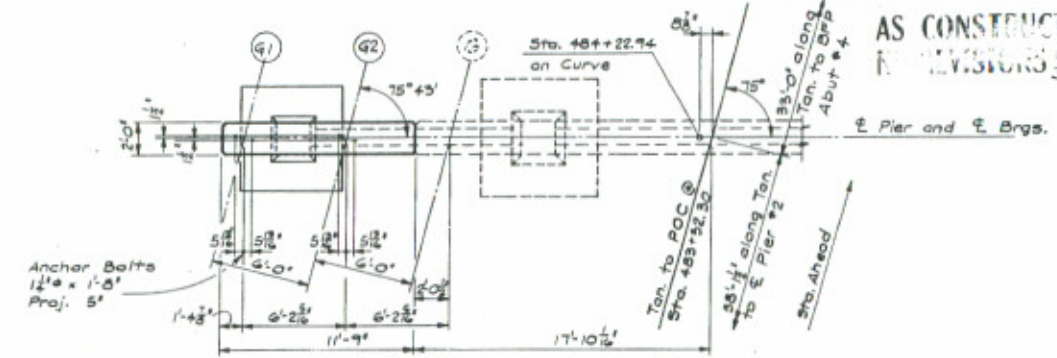
FEDERAL ROAD DISTRICT	PROJ. NO.	SHEET NO.	TOTAL SHEETS
XIII COLORADO	I 25 - 2 (113)	56	

REVISIONS	

AS CONSTRUCTED  
 REVISED DATE 3/23/76

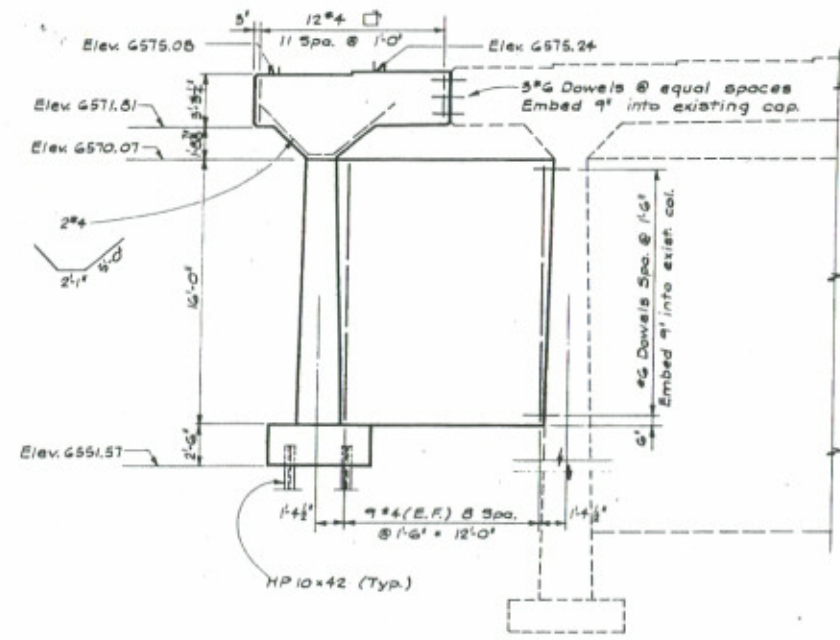


PLAN - PIER NO. 2  
 (H-17-L Southbound)

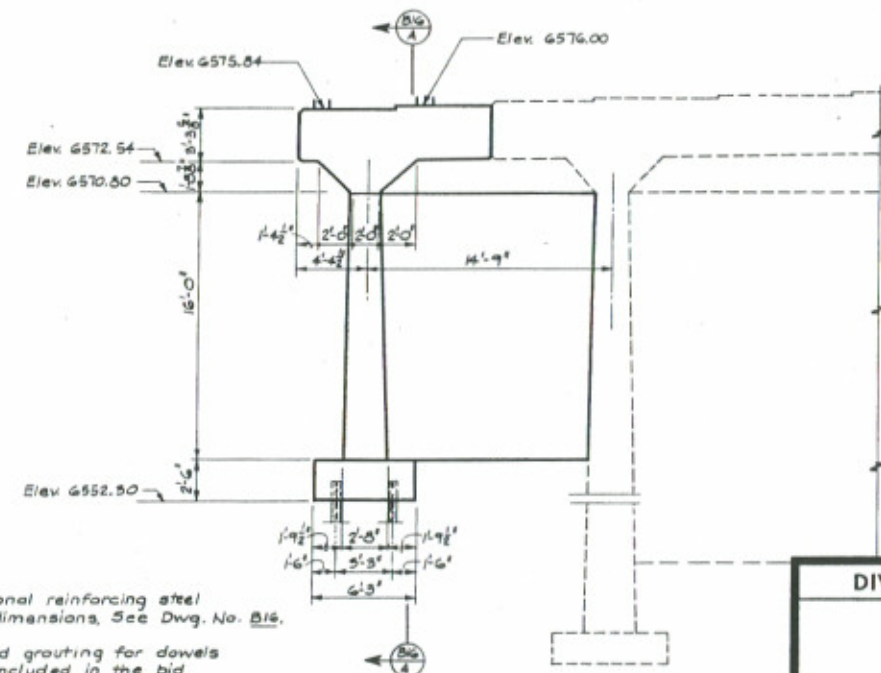


PLAN - PIER NO. 3  
 (H-17-L Southbound)

DESIGNED BY	CHECKED BY



ELEVATION - PIER NO. 2  
 (H-17-L Southbound)  
 For Dimensions see Pier No. 3.



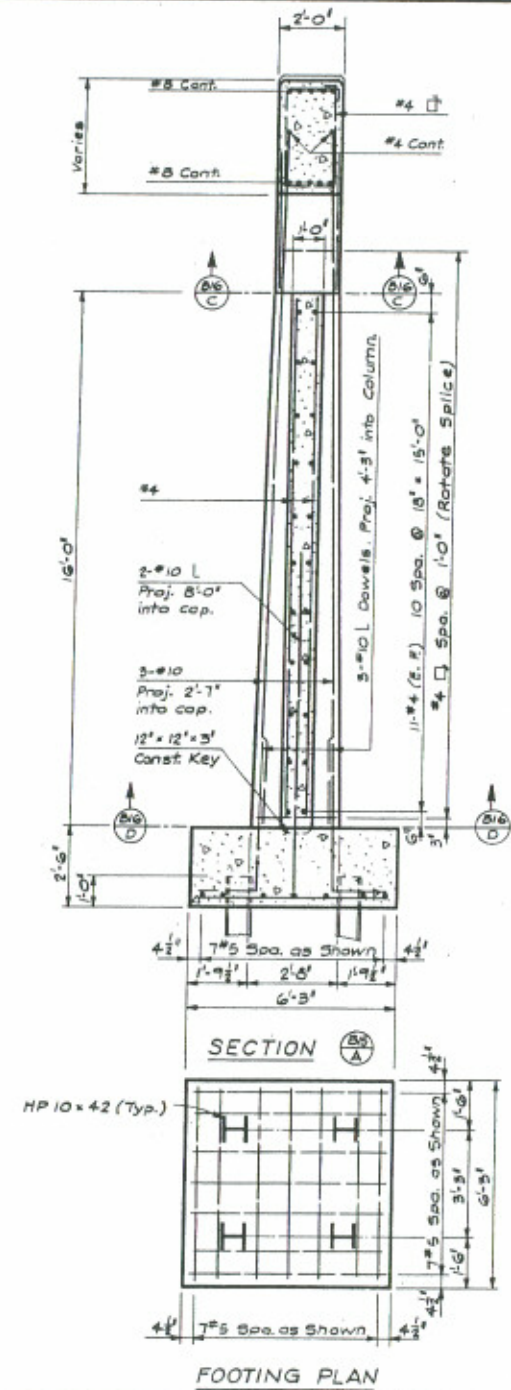
ELEVATION - PIER NO. 3  
 (H-17-L Southbound)  
 For Reinforcing see Pier No. 2.

Note:  
 For additional reinforcing steel details & dimensions, see Dwg. No. B15.  
 Drilling and grouting for dowels shall be included in the bid price for Item 601 Concrete, Class 'A' (Bridge) Typical.

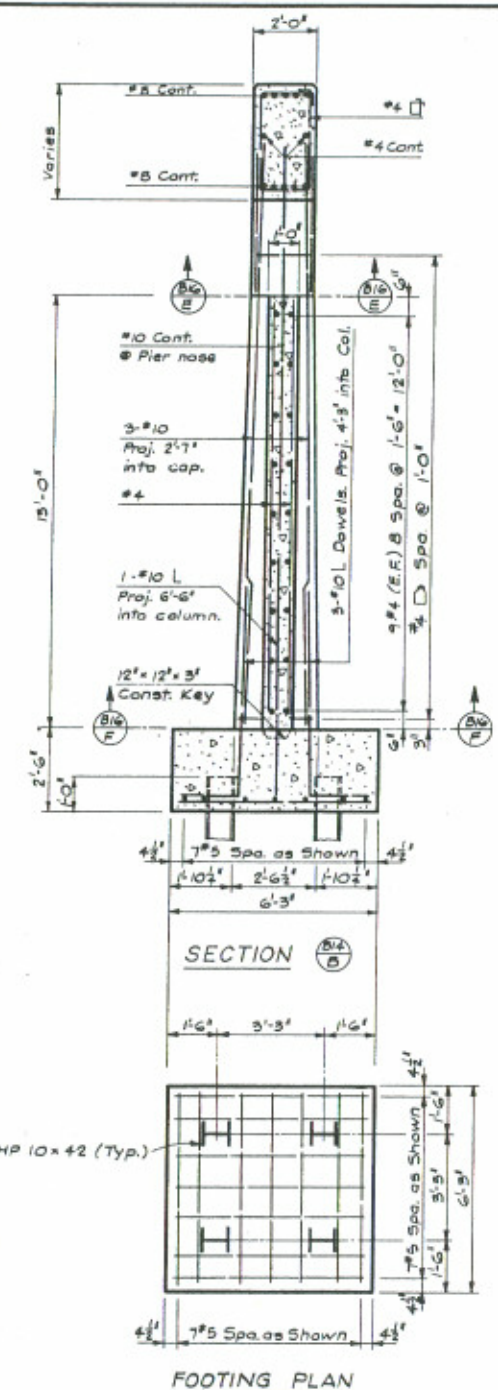
<b>DIVISION OF HIGHWAYS</b>			
<b>PIER DETAILS</b>			
<b>H-17-L SOUTHBOUND</b>			
Designer	D. Peterson	Structure	H-17-L Northbound
Detailer	B. Walton	Numbers	H-17-L Southbound
Drawing Number	B 15	of	26 Drawings

SEE PLAN FOR DIMENSIONS

DESIGNED BY	DATE	CHECKED BY
QUANTITIES BY		APPROVED BY
REVISED BY		



**H-17-L SOUTHBOUND**  
 Note: For additional reinforcing steel details see Dwg. No. B15.



FEDERAL ROAD DISTRICT	PROJ. NO.	SHEET NO.	TOTAL SHEETS
XIII COLORADO	I 25 - 2 (113)	57	

REVISIONS	

**AS CONSTRUCTED**  
 NO REVISIONS DATE 3/23/76

**H-17-J NORTHBOUND**

Note: For additional reinforcing steel details See Dwg. No. B14.

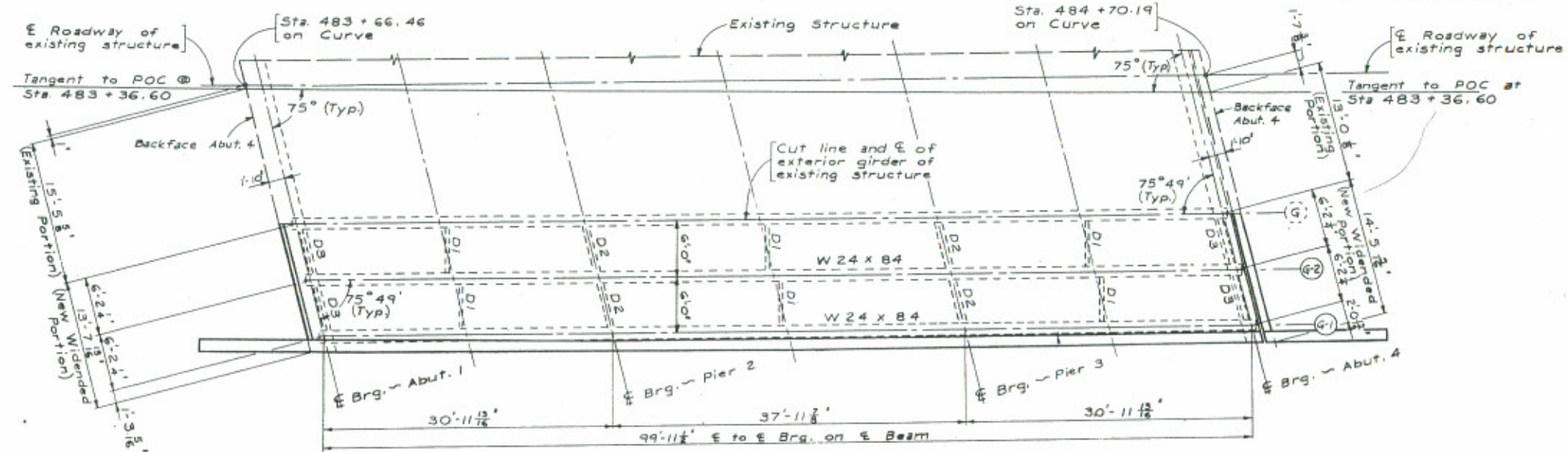
<b>DIVISION OF HIGHWAYS</b>	
<b>PIER DETAILS</b>	
H-17-J NORTHBOUND H-17-L SOUTHBOUND	
Designer: D. Peterson	Structure: H-17-J Northbound
Designer: S. Walton	Structure: H-17-L Southbound
Drawing Number: B 16	of 26 Drawings

AS CONSTRUCTED  
NO REVISIONS DATE 3/23/76

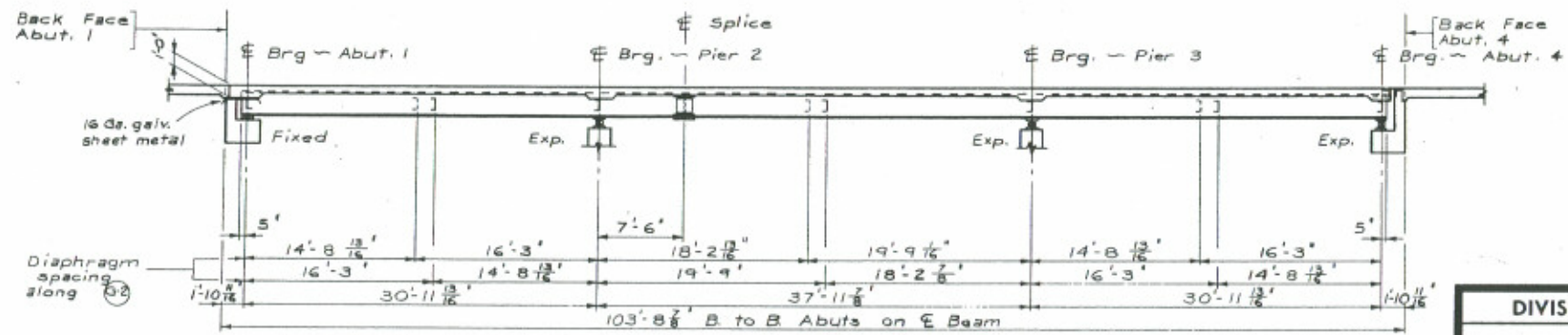
FEDERAL ROAD DISTRICT	PROJ. NO.	SHEET NO.	TOTAL SHEETS
XIII	COLORADO I 25-2(113)	58	

REVISIONS	



PLAN  
H-17-J NORTHBOUND



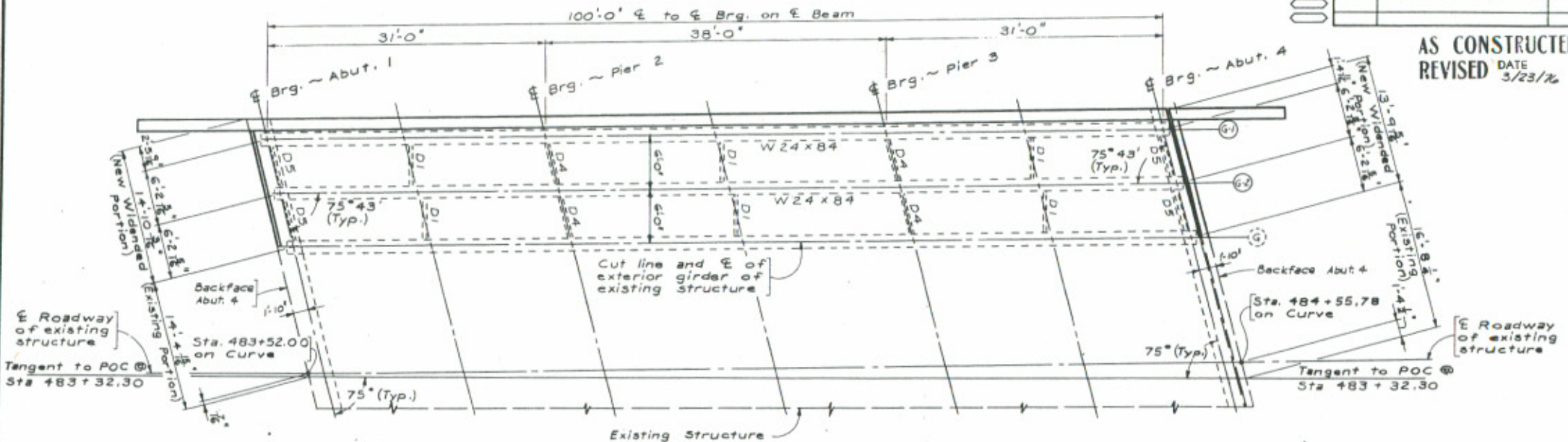
SECTION ALONG C OF BEAM  
H-17-J NORTHBOUND

<b>DIVISION OF HIGHWAYS</b>	
<b>SUPERSTRUCTURE DETAILS H-17-J NORTHBOUND</b>	
Designer D. Peterson	Structure H-17-J Northbound
Detailer K. Shigley	Numbers H-17-L Southbound
Drawing Number B 17	of 26 Drawings

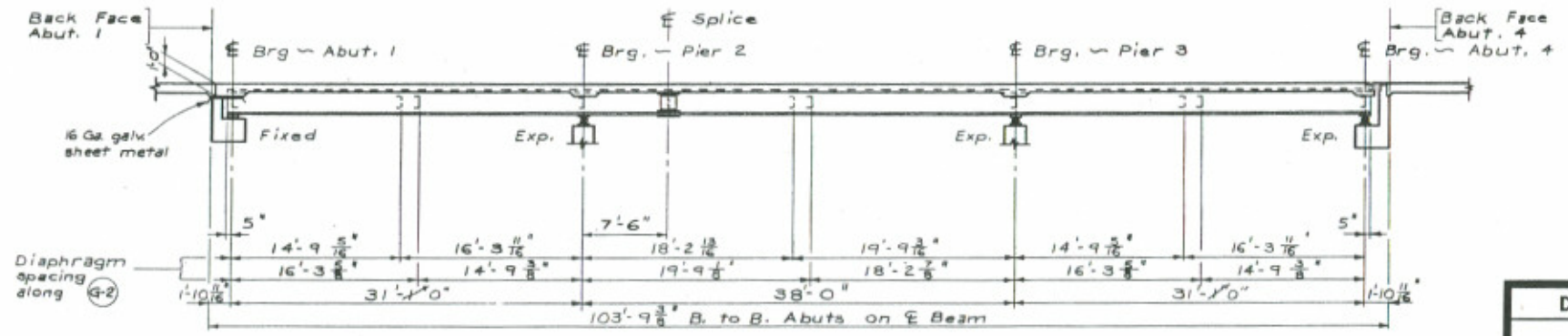

FEDERAL ROAD DISTRICT	PROJ. NO.	SHEET NO.	TOTAL SHEETS
XIII COLORADO	I 25 - 2 (113)	59	

REVISIONS	

AS CONSTRUCTED  
 REVISED DATE 5/23/76



PLAN  
 H-17-L SOUTHBOUND



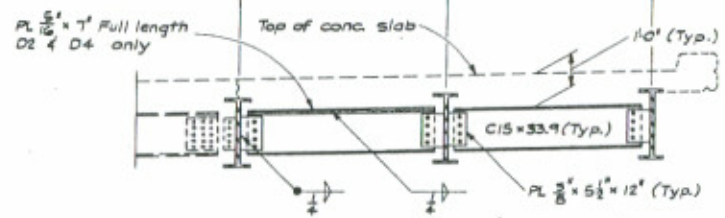
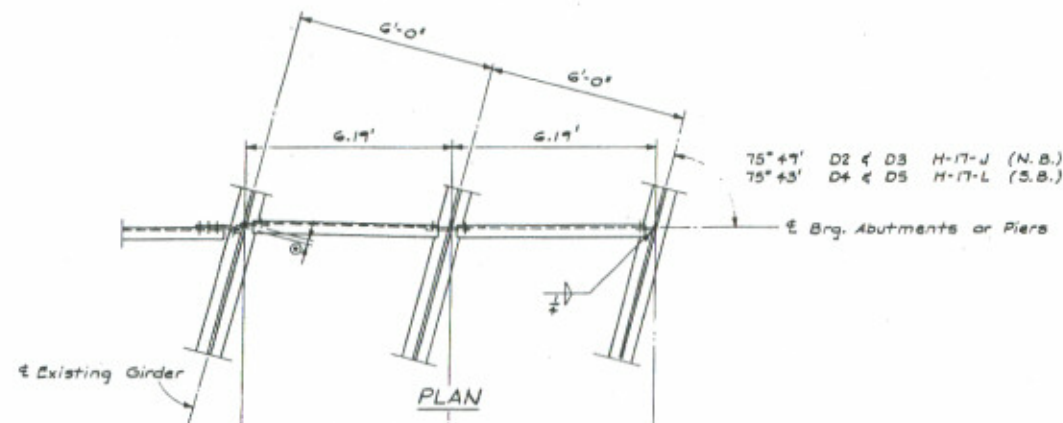
SECTION ALONG E OF BEAM  
 H-17-L SOUTHBOUND

DESIGNED BY	DATE
CHECKED BY	
APPROVED BY	
DESIGNED BY	
CHECKED BY	
APPROVED BY	

DIVISION OF HIGHWAYS	
SUPERSTRUCTURE DETAILS H-17-L SOUTHBOUND	
Designer D. Peterson	Structure H-17-L Northbound
Detailer K. Sharpley	Numbers H-17-L Southbound
Drawing Number B 15	of 26 Drawings

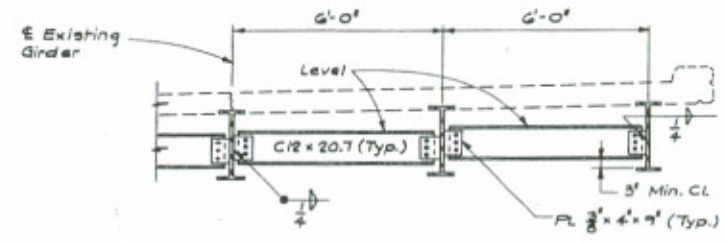
FEDERAL ROAD DISTRICT	PROJ. NO.	SHEET NO.	TOTAL SHEETS
XIII COLORADO	I 25-2 (113)	60	
REVISIONS			

AS CONSTRUCTED  
NO REVISIONS DATE 3/23/76



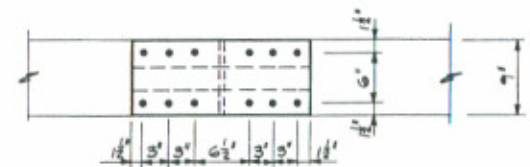
DIAPHRAGM D2, D3, D4 & D5 — ELEVATION

Diaphragm D2 & D3 shown; D4 & D5 similar except slope.  
① Offset new 3/8" plates to miss existing rivets (Typ.).

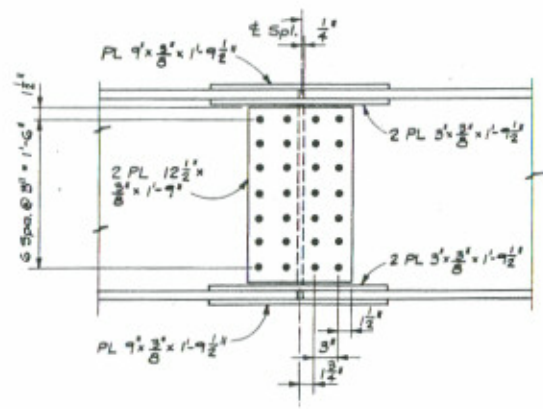


DIAPHRAGM D1 — ELEVATION

**NOTES:**  
All diaphragm bolts are 3/4"φ.  
The intermediate diaphragm (D1) bolted connections shall not be torqued until the slab has been poured.  
Holes in plate to be slotted (1 1/2" x 3/8" slots).  
Alterations of the existing exterior girder will not be measured and paid for separately but shall be included in the cost of new structural steel. Areas of girder onto which weld metal will be deposited shall be thoroughly cleaned free of old paint before welding is started.



TOP AND BOTTOM PLATES



ELEVATION

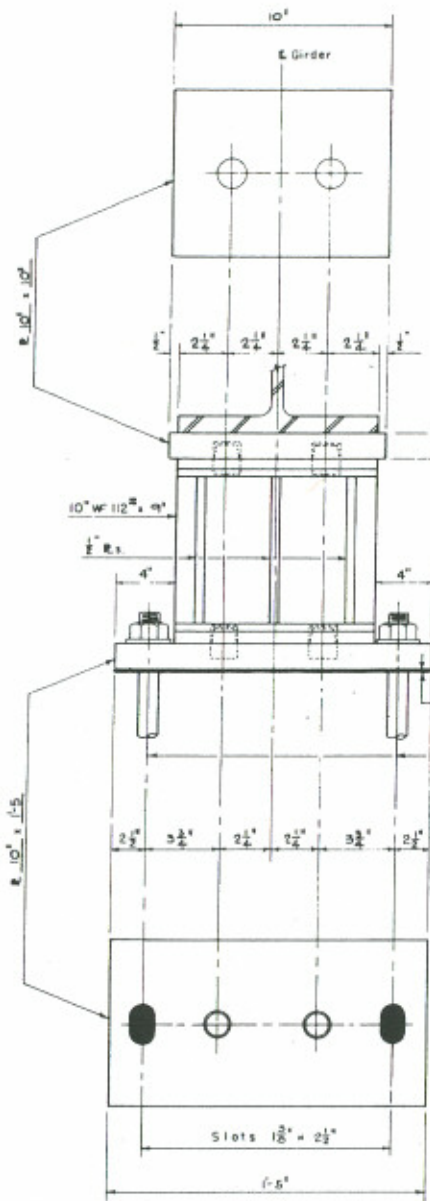
**SPLICE DETAILS**  
Note: All splice bolts are H.S. 7/8"φ.

DIVISION OF HIGHWAYS			
SUPERSTRUCTURE DETAILS			
Designer D. Peterson	Structure H-17-J Northbound		
Detailer B. Walton	Numbers H-17-L Southbound		
Drawing Number B 17	of 26	Drawings	
Revision Date		Fictitious Date Only	

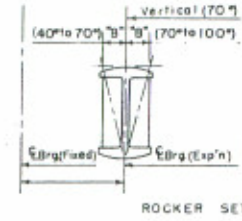

FIGURE NO. / BLOCK NO.	DIVISION	PROJ. NO.	SHEET NO.	TOTAL SHEETS
VIII	COLORADO	I 25 - 2 (113)	61	
REVISIONS				

AS CONSTRUCTED  
NO REVISIONS DATE 3/23/76

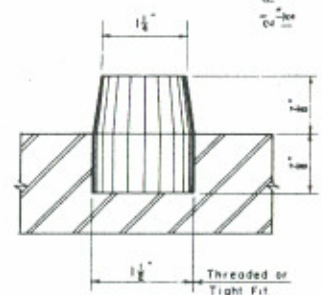
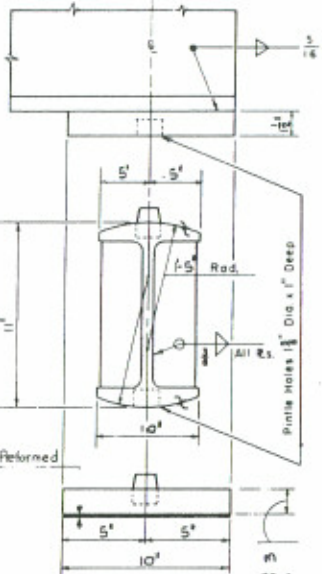
DESIGNED BY	CHECKED BY
DRAWN BY	APPROVED BY



- EXPANSION BEARING**
- 2 Req'd. for Pier 2 (H-17-J)
  - 2 Req'd. for Pier 2 (H-17-L)
  - 2 Req'd. for Pier 3 (H-17-J)
  - 2 Req'd. for Pier 3 (H-17-L)
  - 2 Req'd. for Abut 4 (H-17-J)
  - 2 Req'd. for Abut 4 (H-17-L)

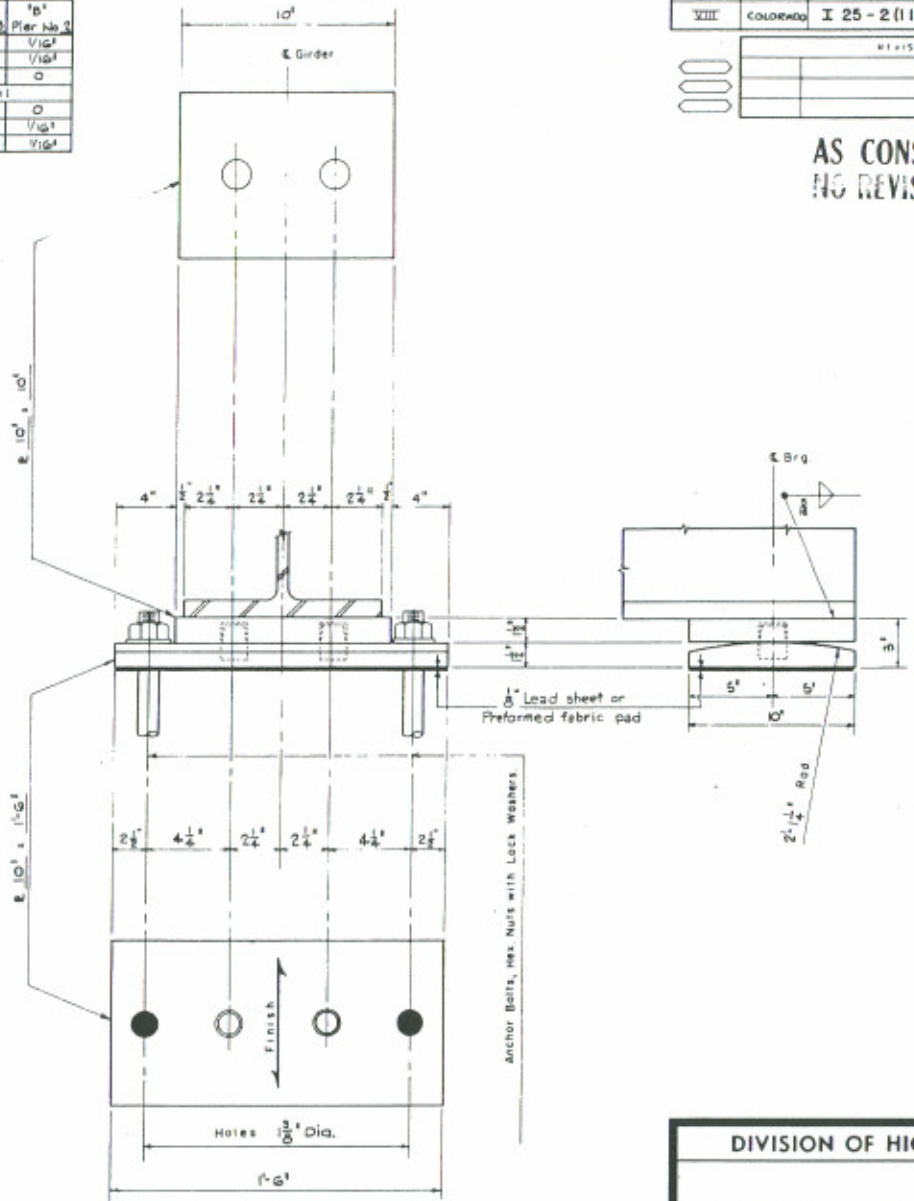


Outside Temp	<sup>1</sup> / <sub>8</sub> " Abut No. 4	<sup>1</sup> / <sub>8</sub> " Pier No. 3	<sup>1</sup> / <sub>8</sub> " Pier No. 2
40°	1/4"	3/16"	1/16"
50°	3/16"	1/8"	1/16"
60°	1/16"	1/16"	0
70°	Vertical		
80°	1/16"	1/16"	0
90°	3/16"	1/8"	1/16"
100°	1/4"	3/16"	1/16"



PINTLE DETAIL

**DETAILS OF BEARINGS**  
Rocker may be built from plates equal in thickness to designated WF Section or may be made from Cast Steel.



- FIXED BEARING**
- 2 Req'd. for Abut 1 (H-17-J)
  - 2 Req'd. for Abut 1 (H-17-L)

**DIVISION OF HIGHWAYS**

**SUPERSTRUCTURE DETAILS**

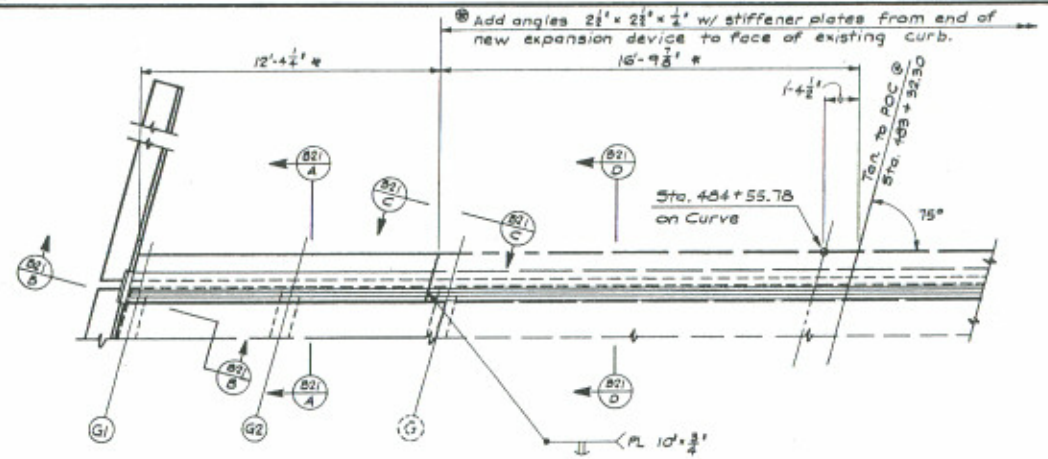
Designer	D. Peterson	Checker	B. Walton
Structure Number	H-17-J Northbound		
	H-17-L Southbound		
DWG. No.	B 20	of	26

(7-1-74)

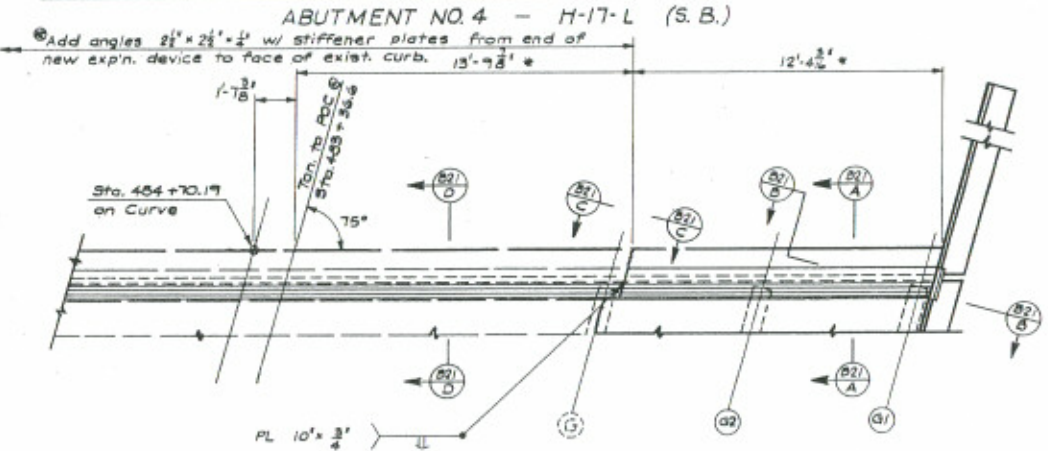
AS CONSTRUCTED  
 NO REVISIONS DATE 3/23/76

FEDERAL ROAD DISTRICT	PROJ. NO.	SHEET NO.	TOTAL SHEETS
III COLORADO	I 25 - 2(113)	62	

REVISIONS	



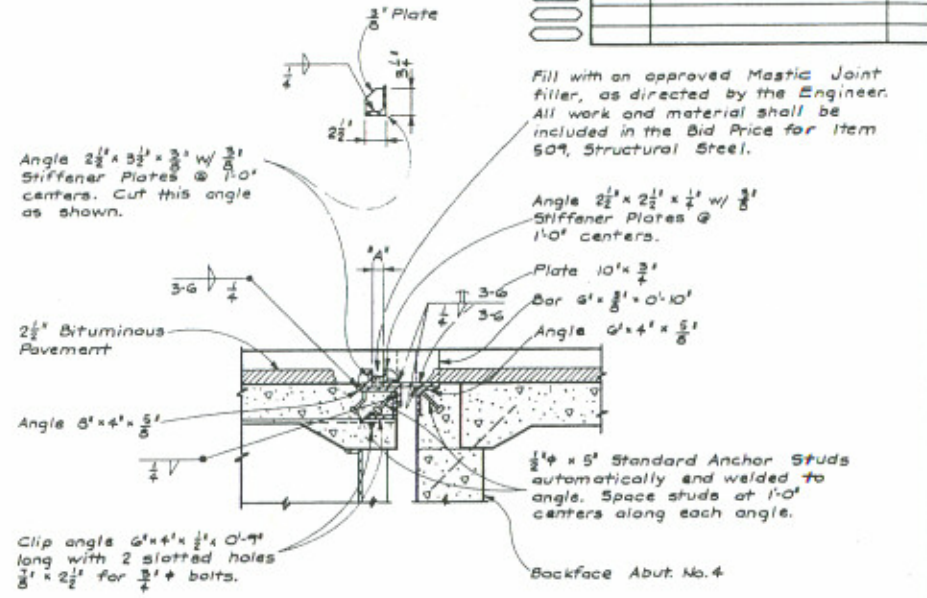
PLAN SHOWING ROADWAY EXPANSION DEVICE FOR NEW WIDENED PORTION



PLAN SHOWING ROADWAY EXPANSION DEVICE FOR NEW WIDENED PORTION

ABUTMENT NO. 4 H-17-J (N.B.)

DATE	DESIGNED BY	CHECKED BY



Outside Temp.	Dimension 'A'
30°	2 3/4'
40°	2 1/2'
50°	2 1/4'
60°	2'
70°	1 3/4'
80°	1 1/2'
90°	1 1/4'
100°	1 1/2'

SECTION A-A

Fill with an approved Mastic Joint filler, as directed by the Engineer. All work and material shall be included in the Bid Price for Item 509, Structural Steel.

Angle 2 1/2' x 2 1/2' x 1/4' w/ 3/8\"/>

Plate 10' x 3/4\"/>

Bar 6' x 3/8' x 0'-10\"/>

Angle 6' x 4' x 5/8\"/>

1/2\"/>

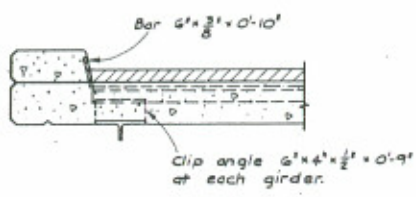
Backface Abut. No. 4

Clip angle 6' x 4' x 1/2', 0'-9\"/>

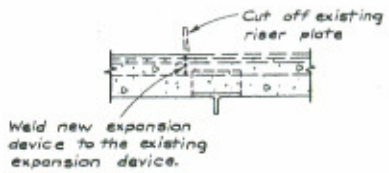
All work necessary to attach new angles to existing device shall be included in the Bid Price for item 509, Structural Steel. Length of angles shall be verified in the field prior to fabrication.

These dimensions shall be verified in the field prior to fabrication of structural steel.

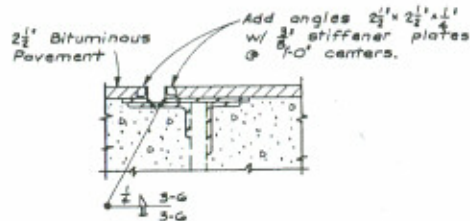
The construction sequence for modifying the existing Expansion Device and method of traffic control shall be approved by the Engineer.



SECTION B-B



SECTION C-C



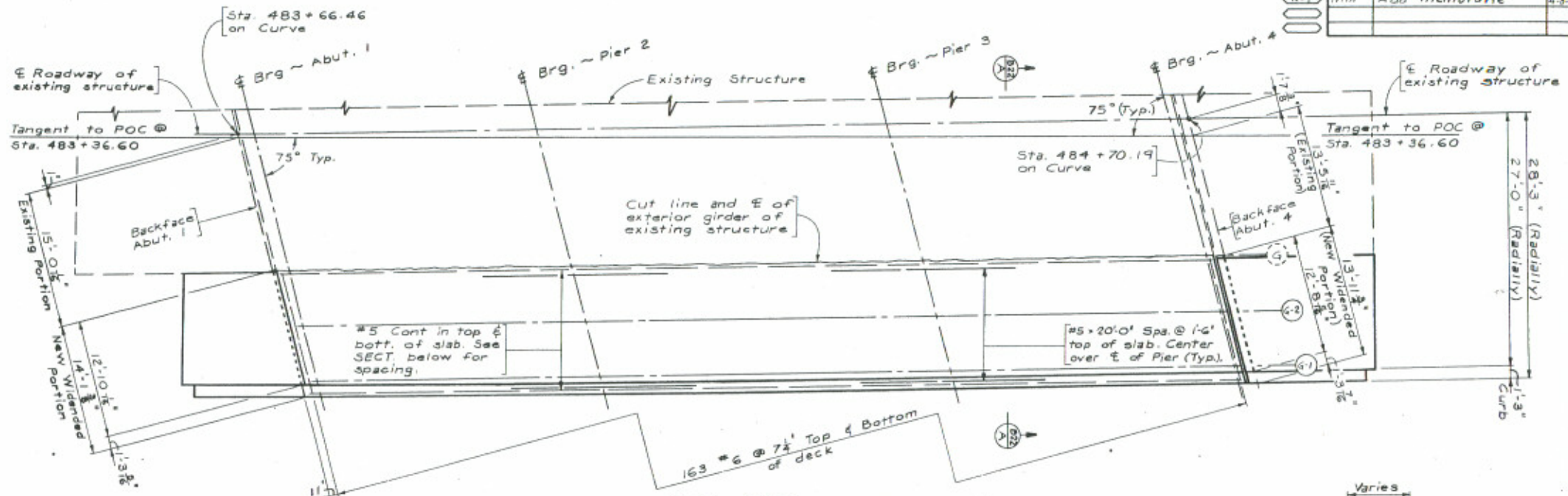
SECTION D-D

DIVISION OF HIGHWAYS			
SUPERSTRUCTURE DETAILS			
Designer	D. Peterson	Structure	H-17-J Northbound
Detailer	B. Walton	Number	H-17-L Southbound
Drawing Number	B 21	of	26 Drawings

AS CONSTRUCTED  
NO REVISIONS DATE 3/23/76

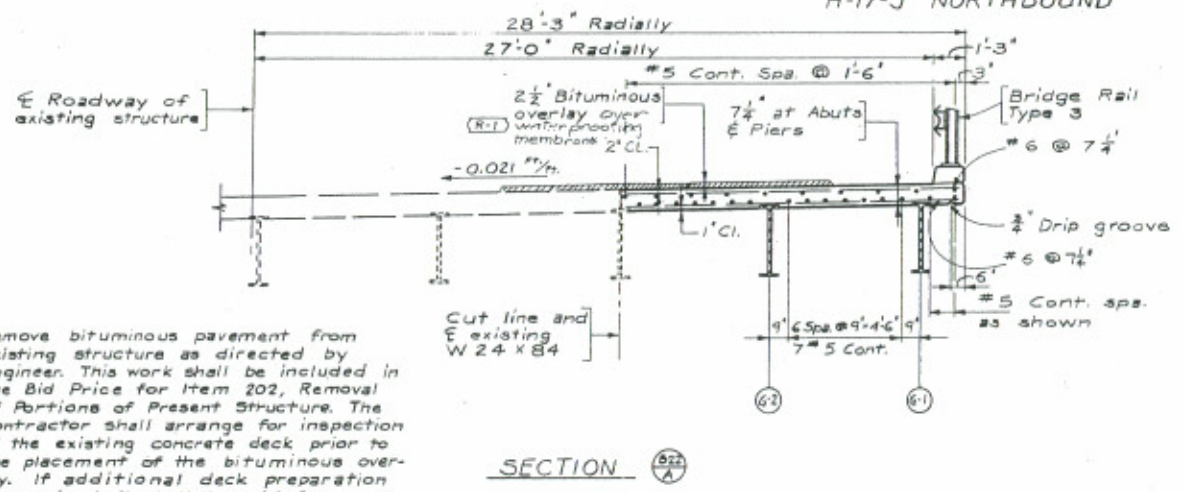
FEDERAL ROAD DISTRICT	PROJ. NO.	SHEET NO.	TOTAL SHEETS
III COLORADO	I 25-2(113)	63	

REVISIONS			
R-1	HRH	Add membrane	4-8-75



DATE	ISSUED BY	QUANTITIES BY	CHECKED BY

SLAB-PLAN  
H-17-J NORTHBOUND



SECTION A-A

Remove bituminous pavement from existing structure as directed by Engineer. This work shall be included in the Bid Price for Item 202, Removal of Portions of Present Structure. The Contractor shall arrange for inspection of the existing concrete deck prior to the placement of the bituminous overlay. If additional deck preparation is required it shall be paid for as extra work.

Cut line and E existing W24x84. Saw cut 1" deep prior to removal.

Cost all cut line surfaces with Epoxy bonding material. Epoxy shall be included in the Bid Price for Item 601, Concrete Class D (Bridge).

Note:  
Slab thickness shall be increased 1/2" at E of end spans and 1/4" at E of center span to compensate for dead load deflection.

See Dwg. No. B-24 for curb dowels and reinforcing.

Clean and straighten projecting slab reinforcing to lap with new slab reinforcing.

Existing railing and posts shall become the property of the Division of Highways State of Colorado.

CUT LINE DETAIL ~ SUPERSTRUCTURE  
Showing portions of present structure to be removed.

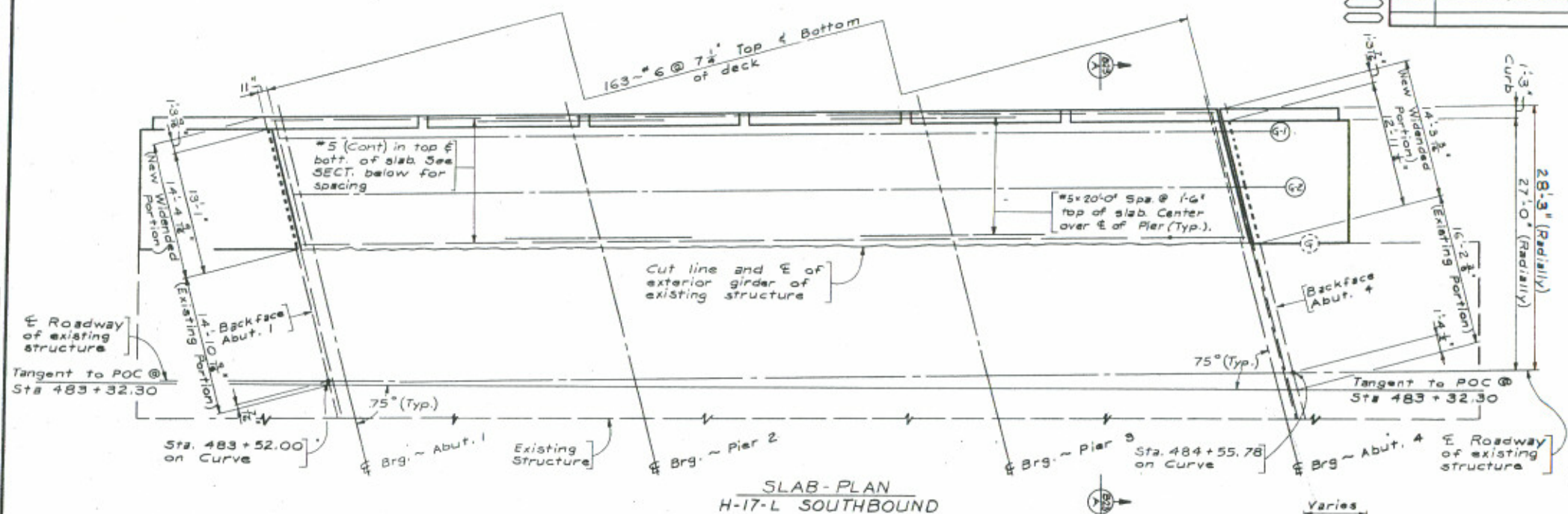
DIVISION OF HIGHWAYS			
SUPERSTRUCTURE DETAILS H-17-J NORTHBOUND			
Designer D. Peterson	Structure H-17-J Northbound		
Detailer K. Sharpley	Numbers H-17-L Southbound		
Drawing Number B 22	of 26	Drawings	



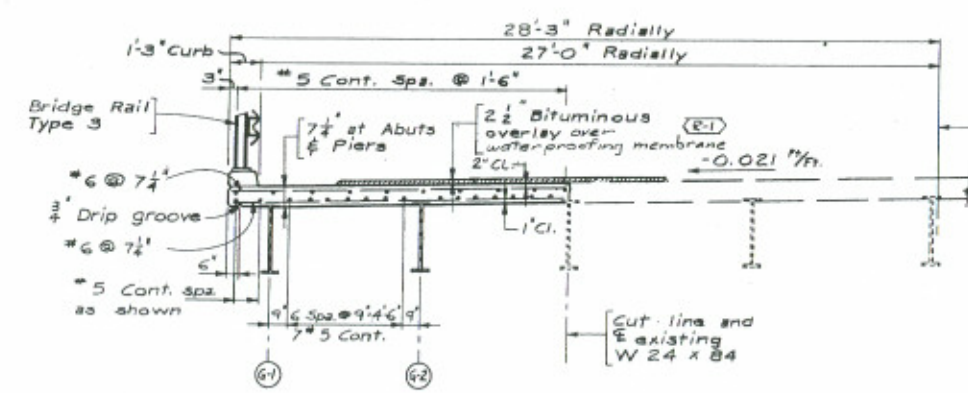
AS CONSTRUCTED  
NO REVISIONS DATE 3/23/76

FEDERAL ROAD DISTRICT	PROJ. NO.	SHEET NO.	TOTAL SHEETS
COLO. 25	I 25-2(113)	64	

REVISIONS			
8-1	HHH	Add waterproofing	4-8-75



NO.	DATE	BY	DESCRIPTION

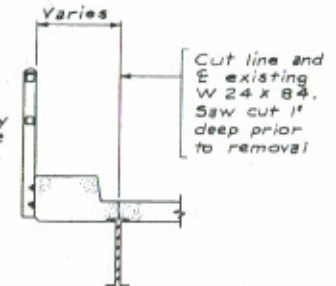


SECTION A-A

Remove bituminous pavement from existing structure as directed by Engineer. This work shall be included in the Bid Price for Item 202, Removal of Portions of Present Structure. The Contractor shall arrange for inspection of the existing concrete deck prior to the placement of the bituminous overlay. If additional deck preparation is required it shall be paid for as extra work.

SLAB-PLAN  
H-17-L SOUTHBOUND

Coat all cut line surfaces with Epoxy bonding material. Epoxy shall be included in the Bid Price for Item 601, Concrete, Class D (Bridge).



CUT LINE DETAIL - SUPERSTRUCTURE  
Showing portions of present structure to be removed.

Note: Slab thickness shall be increased 3/4" at E of end spans and 1/2" at E of center span to compensate for dead load deflection.

See Dwg. No. B-24 for curb dowels and reinforcing.

Clean and straighten projecting slab reinforcing to lap with new slab reinforcing.

Existing railing and posts shall become the property of the Division of Highways State of Colorado.

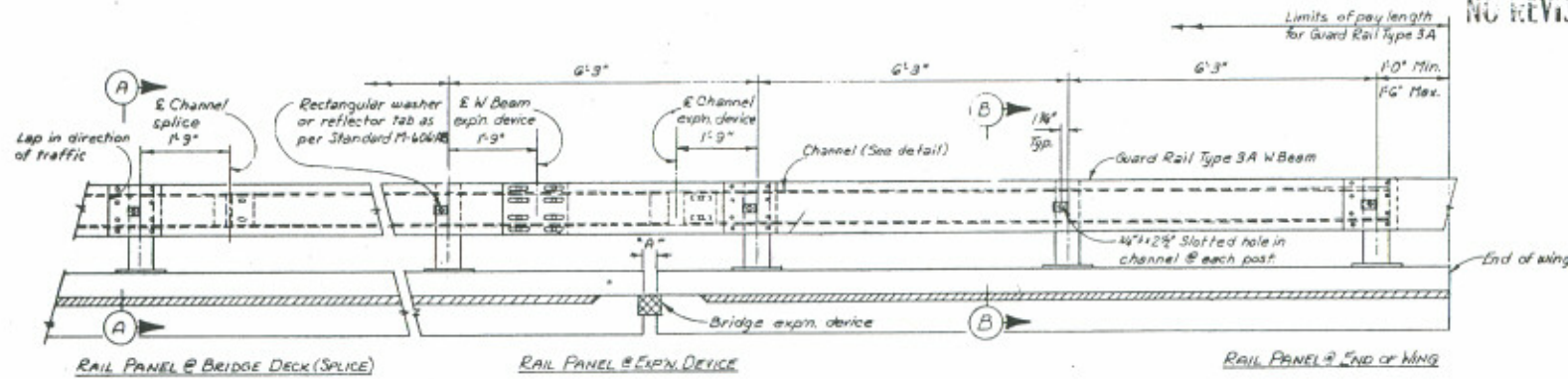
<b>DIVISION OF HIGHWAYS</b>			
<b>SUPERSTRUCTURE DETAILS H-17-L SOUTHBOUND</b>			
Designer D. Peterson	Structure H-17-L Northbound		
Detailer K. Sharpley	Numbers H-17-L Southbound		
Drawing Number B 25	of 26	Drawings	

AS CONSTRUCTED  
NO REVISIONS DATE 5/25/76

FEDERAL ROAD DISTRICT NO.	REVISION	PROJ. NO.	SHEET NO.	TOTAL SHEETS
XIII		I 25-2 (113)	65	

REVISIONS	



NOTES

POSTS SHALL BE PERPENDICULAR TO THE GRADE OF THE DECK.

ALL POSTS, CHANNEL, CHANNEL SPLICE, EXPANSION DEVICE, ANCHOR ASSEMBLY, BOLTS, NUTS AND WASHERS SHALL BE GALVANIZED AFTER FABRICATION OR ACCORDANCE WITH THE SPECIFICATIONS AND SHALL BE MEASURED AND PAID FOR IN ACCORDANCE WITH SECTION 509.

CHANNEL SHALL BE CONTINUOUS OVER NOT LESS THAN TWO (2) POSTS.

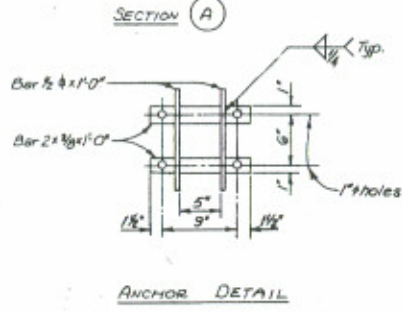
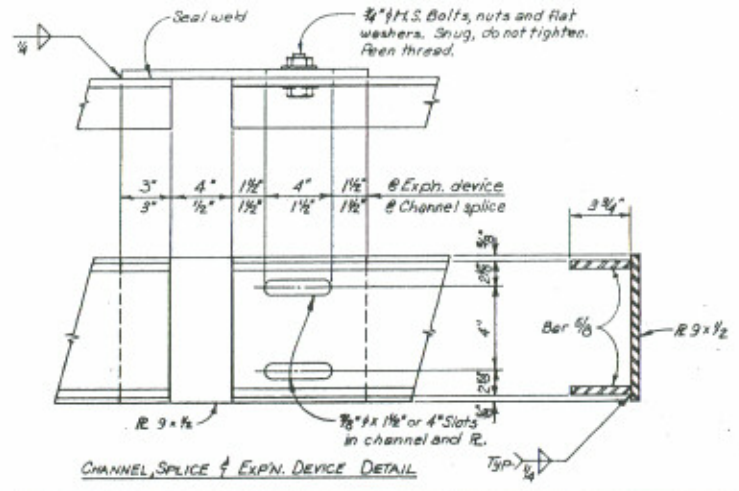
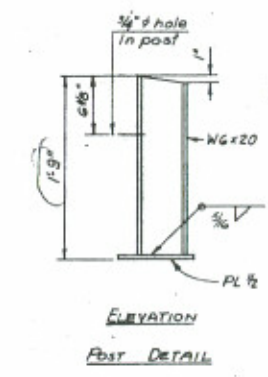
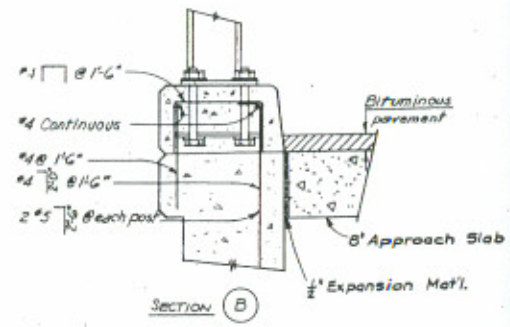
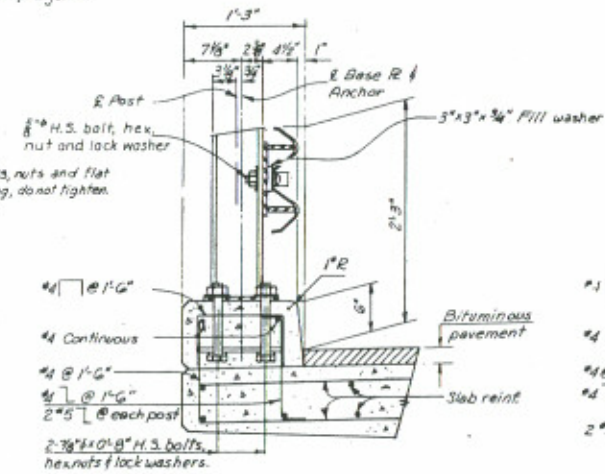
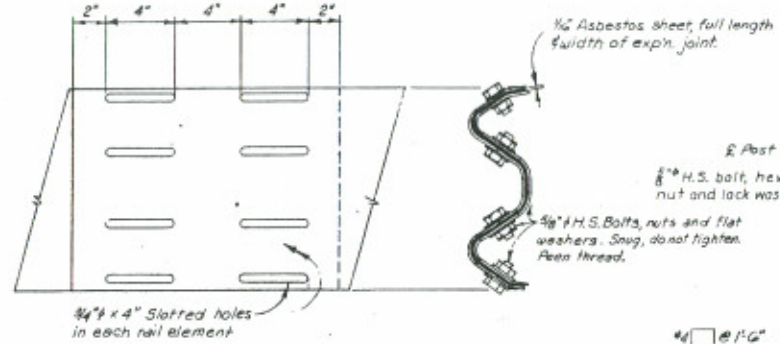
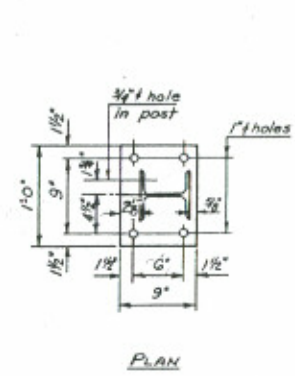
POSTS AT EXPANSION JOINT SHALL BE 3'-0" MINIMUM FROM THE CENTER LINE OF THE JOINT TO CENTER LINE OF POST MEASURED ALONG THE CENTER LINE OF POSTS.

ONE OR MORE 6'-3" PANELS MAY BE REDUCED (6'-0" MIN.) IN ORDER TO MAINTAIN DIMENSIONS FROM THE END OF WINGS AND EXPANSION JOINTS.

ALL EXPOSED CORNERS SHALL BE GRIND SMOOTH.

SEE STANDARD M-606-AB FOR ADDITIONAL DETAILS.

DATE	REVISION	BY	CHECKED BY

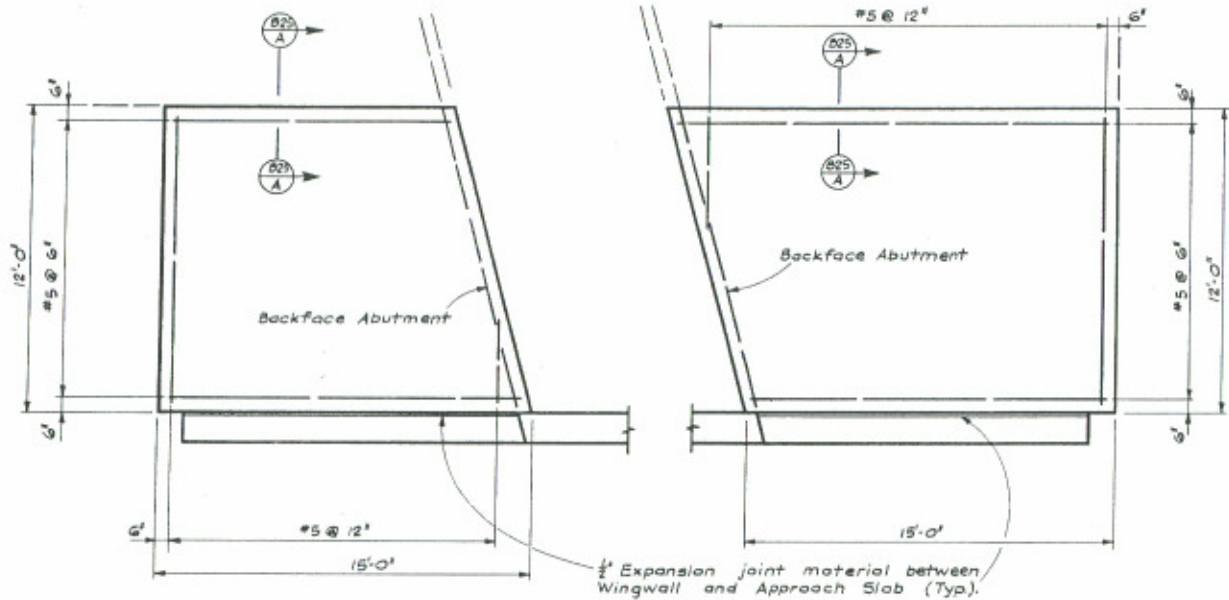


**DIVISION OF HIGHWAYS**

**BRIDGE RAIL TYPE 3**

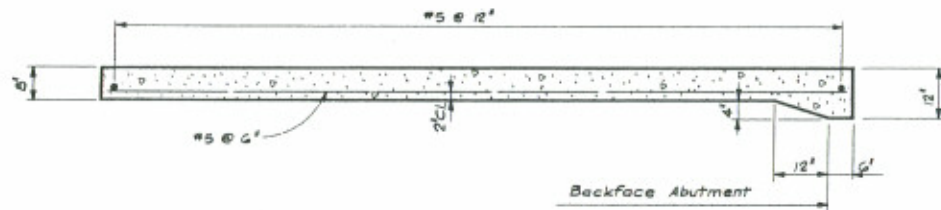
Designer	J. GRAYNA	Structure	M-17-J
Detailer	J.R. EYBER	Numbers	M-17-L
Drawing Number	B 24	of	20 Drawings

DESIGNED BY	APPROVED BY
CHECKED BY	CONTRACTED BY
DATE	DATE

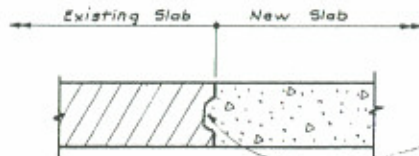


PLAN - APPROACH SLAB  
 ABUTMENT NO. 1 - H-17-J  
 ABUTMENT NO. 4 - H-17-L

PLAN - APPROACH SLAB  
 ABUTMENT NO. 4 H-17-J  
 ABUTMENT NO. 1 H-17-L



TYPICAL LONGITUDINAL SECTION THRU APPROACH SLAB



SECTION (B25 A)

Note:  
 Portions of existing Approach Slabs that interfere with the new construction shall be removed as directed by the Engineer. All work shall be included in the Bid Price for Item 202, Removal of Portions of Present Structure.

Roughen edge of existing Approach Slab to provide keyway, as directed by Engineer. Work shall be included in the bid price for Item 601 Concrete, Class 'A'.



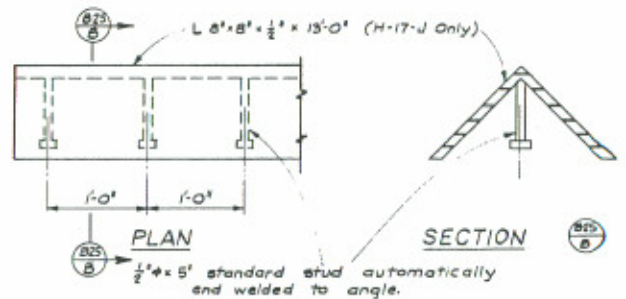
FEDERAL ROAD DISTRICT	PROJ. NO.	SHEET NO.	TOTAL SHEETS
XIII COLORADO	I 25-2(113)	66	

REVISIONS	

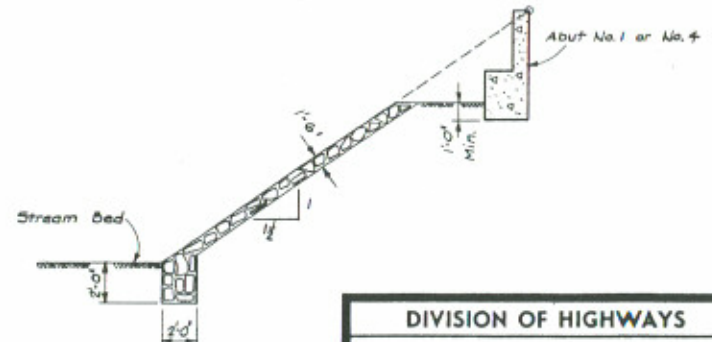
AS CONSTRUCTED  
 NO REVISIONS DATE 3/23/76

SURFACE FINISH DETAILS

Shows portions of structure to receive class 2 surface finish.



PIER NOSE ANGLE DETAILS  
 (2 Required)



DETAIL OF RIPRAP WITH TOE

Note: Transition ends of riprap may be modified by the Engineer to fit conditions encountered in the field.

DIVISION OF HIGHWAYS			
APPROACH SLAB DETAILS			
MISCELLANEOUS DETAILS			
Designer D. Peterson	Reviewer H-17-J Northbound		
Detailer S. Warren	Reviewer H-17-L Southbound		
Drawing Number B 25	of 26	Drawings	

Revision Date: (Preliminary Stage Only)

GENERAL NOTES

ALL WORK SHALL BE DONE ACCORDING TO THE STANDARD SPECIFICATIONS OF THE DIVISION OF HIGHWAYS, STATE OF COLORADO, APPLICABLE TO THE PROJECT.

Expansion Joint Material shall meet AASHTO Specification M-213.

The following Structural Steel shall be AASHTO M-183 (ASTM A-36): Rail Posts.

STATIONS, ELEVATIONS, AND DIMENSIONS CONTAINED IN THESE PLANS ARE CALCULATED FROM THE "AS CONSTRUCTED PLANS." THESE STATIONS, ELEVATIONS AND DIMENSIONS MAY BE ADJUSTED TO MEET THE EXISTING STRUCTURE. THE CONTRACTOR SHALL VERIFY ALL DEPENDENT DIMENSIONS IN THE FIELD BEFORE ORDERING OR FABRICATING ANY MATERIAL.

FINAL SUMMARY OF QUANTITIES

Item No.	Description	Unit	H-17-J	H-17-L	Total	BOOK	PAGE
202	Removal of Asphalt Mat (Planing)	Ton	40	27	67	1	3
202	Removal of Bridge Railing	Lin. Ft.	225 <del>231</del>	225 <del>232</del>	450 <del>463</del>	1	5
403	Hot Bituminous Pavement (Gr. E) (Haul & Asphalt)	Ton	54	54	108		
① 509	Structural Steel (Galvanized)	Lb.	1300	1300	2600	1	28
518	Bridge Expansion Device (0-4 Inch)	Lin. Ft.	44	44	88		29
② 518	Elastomeric Concrete End Dam	Lin. Ft.	88	88	176	1	30
606	Bridge Rail Type 3R	Lin. Ft.	100	100	200	1	35

① Includes posts and base plates on outside of Str. No's H-17-J & H-17-L.

DESIGNED BY: M.C. J. [Signature]  
 CHECKED BY: R.A. [Signature]  
 QUANTITIES BY: R.A. [Signature]  
 ESTIMATED BY: M.C. J. [Signature]

DESIGN DATA

CURRENT AASHTO SPECIFICATIONS:

LIVE LOAD: AASHTO HS-20-44 AND INTERSTATE ALTERNATE  
 DEAD LOAD: ASSUMES 40 LBS. PER SQ. FT. FOR BITUMINOUS PAVEMENT

REINFORCED CONCRETE:

CLASS D CONCRETE:  $f'_c = 1,800$  psi,  $n = 8$

STRUCTURAL STEEL: AASHTO M-183 (ASTM A-36)  $f_y = 20,000$  psi

CROSS REFERENCE DRAWING NUMBER



SECTION OR DETAIL IDENTIFICATION

AS CONSTRUCTED  
 NO REVISIONS [ ] REVISED 5/11/87 VOID [ ]

FEDERAL ROAD REGION NO. DIVISION COLORADO PROJ. NO. IR 25-2 (195) SHEET NO. 24 TOTAL SHEETS

REVISIONS

R-1	6-6-86	Changed Quantities	R.A.D.
-----	--------	--------------------	--------

BRIDGE STANDARD 0

INDEX OF DRAWINGS

- DWG. NO. 1 GENERAL INFORMATION - SUMMARY OF QUANTITIES
- DWG. NO. 2 PLAN
- DWG. NO. 3 BRIDGE EXPANSION DEVICE DETAIL
- DWG. NO. 4 BRIDGE RAIL TYPE 3R
- DWG. NO. 5 DETAILS FOR INSTALLING BRIDGE RAIL SUMMARY OF QUANTITIES

BRIDGE DESCRIPTION

Expansion device and rail replacement on 2 structures.

**DIVISION OF HIGHWAYS**

GENERAL INFORMATION  
SUMMARY OF QUANTITIES

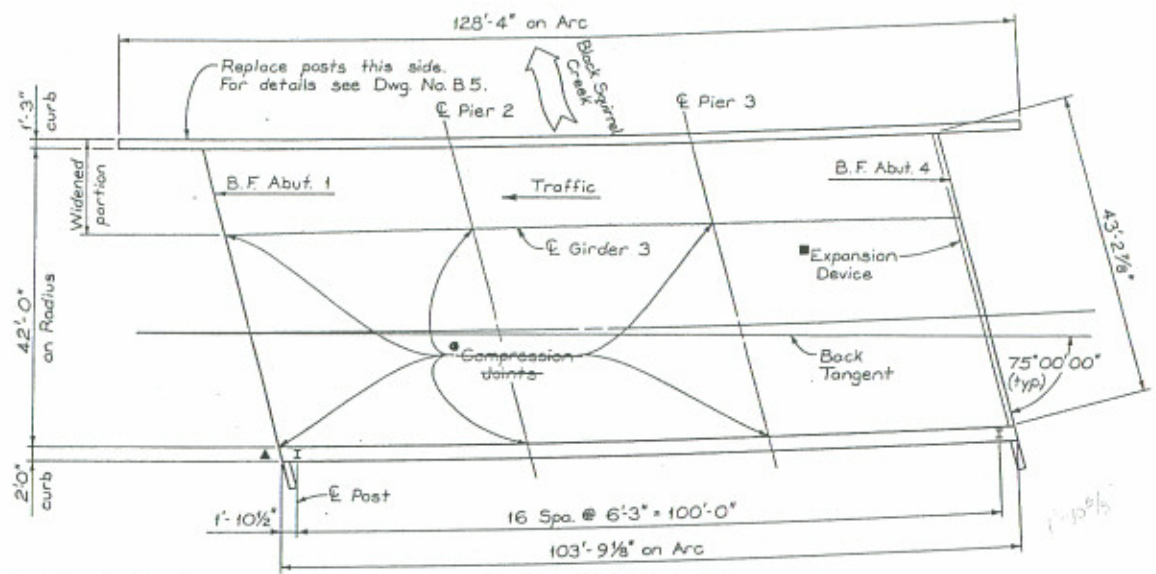
Station  
Station

Near	Sec	T	R
Designer M. Pulver	Structure H-17-J		
Detailer R. Dickey	Numbers H-17-L		
Drawing Number 8		of 5 Drawings	

AS CONSTRUCTED  
 NO REVISIONS [ ] REVISED [X] 5/15/67 VOID [ ]

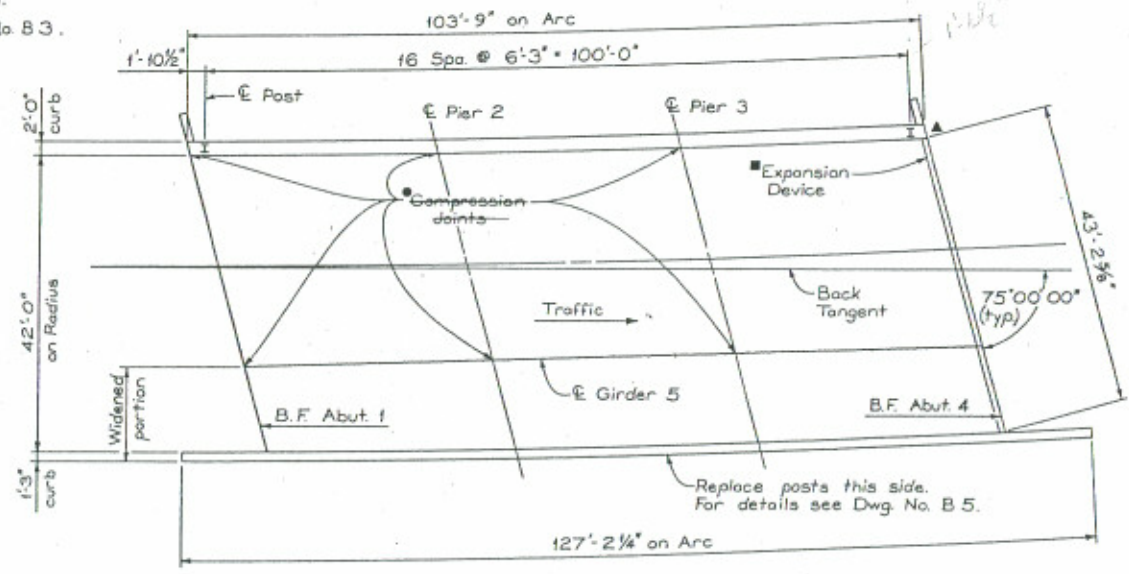
FED. ROAD DISTRICT	DIVISION	PROJ. NO.	SHEET NO.	TOTAL SHEETS
200	COL. O.	IR 25-2(195)	25	

REVISIONS	

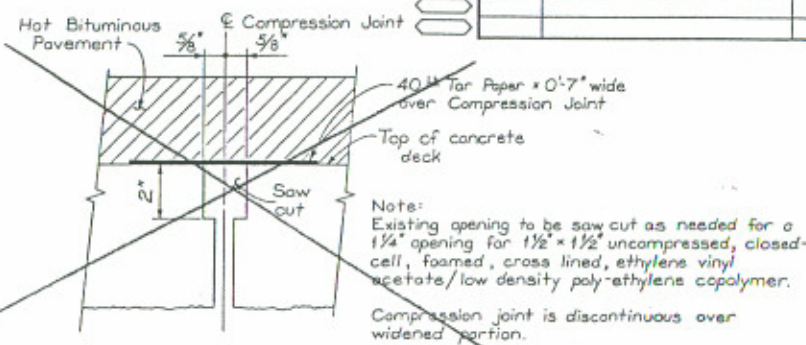


PLAN - STR NO. H-17-L

- ▲ Denotes required terminal section.
- See detail this sheet.
- For details see Dwg. No. B 3.

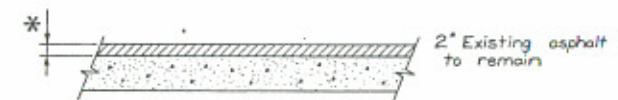


PLAN - STR NO. H-17-J



Note:  
 Existing opening to be saw cut as needed for a 1 1/4" opening for 1 1/2" x 1 1/2" uncompressed, closed-cell, foamed, cross lined, ethylene vinyl acetate/low density poly-ethylene copolymer.  
 Compression joint is discontinuous over widened portion.  
 Price to be included in the bid price of Item 518 Bridge Expansion Device (0-4 Inch)

COMPRESSION JOINT DETAIL



SECTION THRU EXISTING SLAB

Str. No.	Description
H-17-J	Strip 1 1/2" off of existing mat.
H-17-L	Strip 1" off of existing mat.

\* For information only

<b>DIVISION OF HIGHWAYS</b>			
PLAN			
DESIGNER	M. Pulver	STRUCTURE NUMBER	H-17-J
DETAILER	R. Dickey	NUMBERS	H-17-L
DRAWING NUMBER	B 2	OF	5 DRAWINGS

DESIGNED BY	K.D.H.	DATE	3-26-67
CHECKED BY	M.P.	DATE	3-26-67
QUANTITIES BY	R.A.O.	DATE	3-26-67
DETAILED BY	B.A.D.	DATE	3-26-67

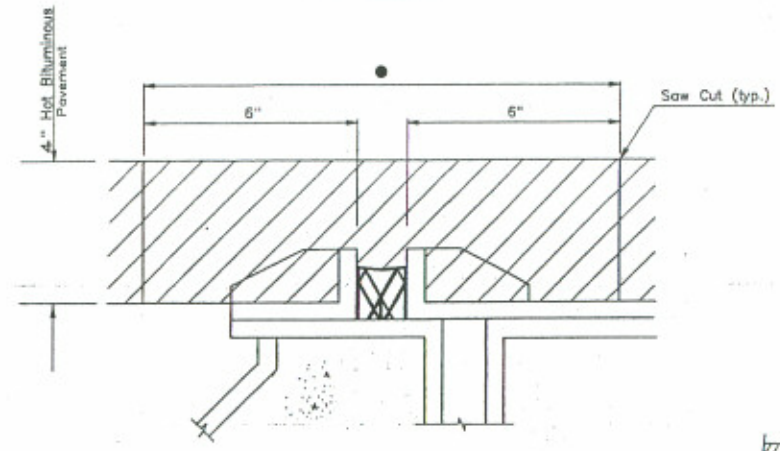
AS CONSTRUCTED		
NO REVISIONS	REVISED 5/12/87	VOID

FED. ROAD REGION	DIVISION	PROJ. NO.	SHEET NO.	TOTAL SHEETS
III	COLO.	IR 25-2(195)	26	

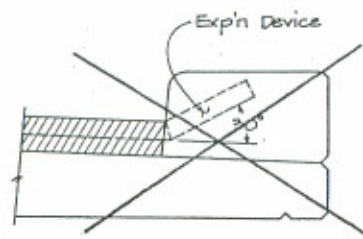
REVISIONS			
R-1	6-6-86	Changed Notes	R/

STEP NO. 1 : Strip off existing asphalt as shown on Dwg. No. B 2.

STEP NO. 2 : Overlay with 2" of Hot Bituminous Pavement.



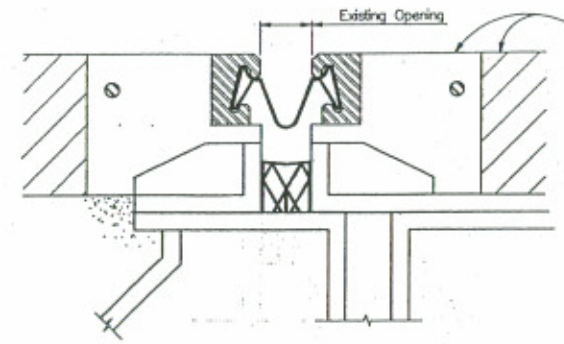
After removing bituminous pavement in this area, sandblast top of concrete and steel angle. Remove all loose particles before placing expansion device and elastomeric concrete end dam.



CURB ELEVATION

STEP NO. 3

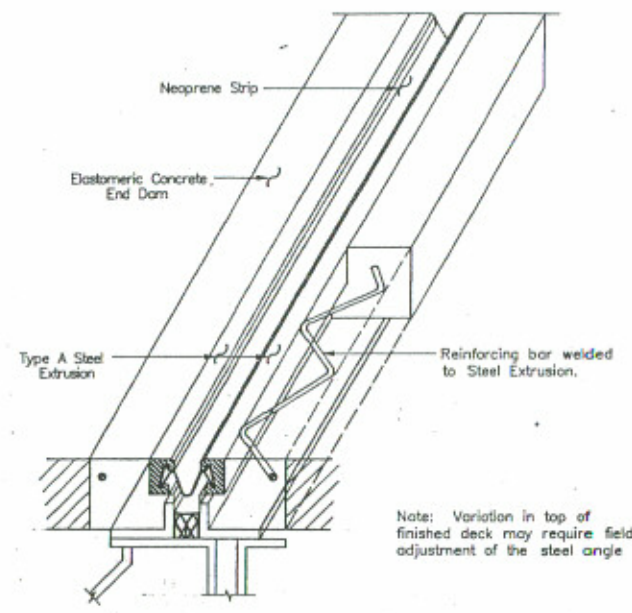
Existing device to remain in place.



Elastomeric concrete to be flush with Bituminous pavement.

Note: 6" wide x 4" deep x 1'-0" = 1 Lin. Ft. of Item 518, Elastomeric Concrete End Dam.

STEP NO. 4



DETAIL AT EXPANSION DEVICE

Note: Variation in top of finished deck may require field adjustment of the steel angle

Note: Fabricator of expansion device will show special field weld details to handle stage construction on their shop drawings.

ACCEPTABLE ALTERNATES

- Wabo-S-400
- Gen-Strip CD
- Oriflex 40-SEG
- D.S Brown 55-400

DESIGNED BY	DATE	CHECKED BY	DATE
M.F.P.	2-84	R.A.D.	3-84
CHECKED BY	DATE	QUANTITIES BY	DATE
R.A.D.	2-88	M.L.P.	3-88
DETAILER BY	DATE	CHECKED BY	DATE

NO NUMBER 6 795 00115157 DRAW. STDS. BEST PRACTICE EXPDEV4

DIVISION OF HIGHWAYS			
BRIDGE EXPANSION DEVICE			
DETAIL			
DESIGNER	M. Pulver	STRUCTURE NUMBER	H-17-J
DETAILER	R. Dickey	STRUCTURE NUMBER	H-17-L
DRAWING NUMBER B		3	OF 5 DRAWINGS

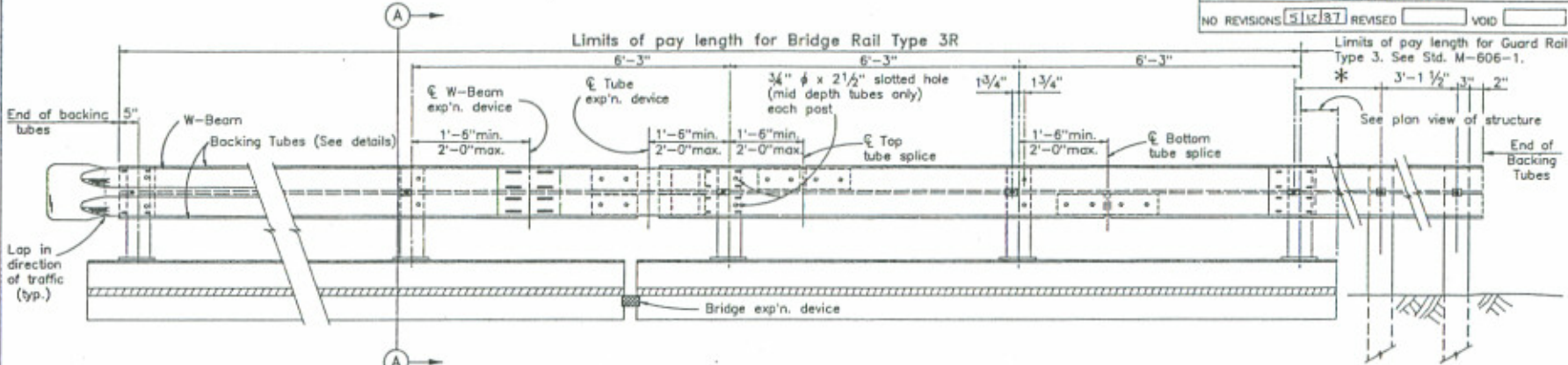
EXPDEV4

REVISION DATE	DESCRIPTION
6/85	

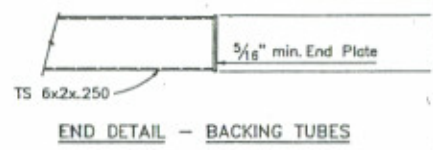
AS CONSTRUCTED  
 NO REVISIONS  REVISED  VOID

FED. ROAD REGION	DIVISION	PROJ. NO.	SHEET NO.	SH. TOT.
VIII	COLD.	IR 25-2(195)	27	

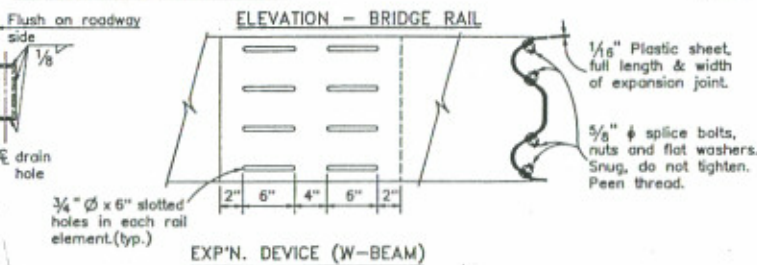
REVISIONS	



**RAIL PANEL @ TERMINAL SECTION**  
 (See roadway plans for ends requiring terminal section.)



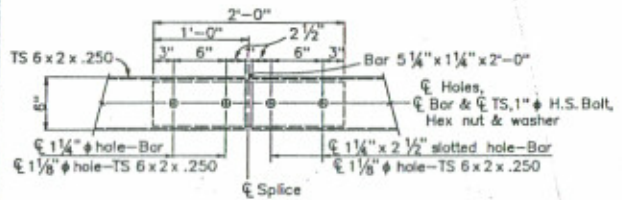
**RAIL PANEL @ EXP'N. DEVICE**



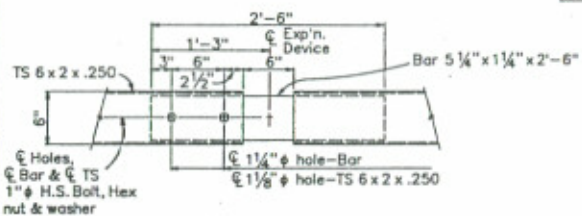
NOTE: BACKING TUBES EXTENDED PAST BRIDGE TO BE INCLUDED IN ITEM 606 - BRIDGE RAIL TYPE 3R.

**POST DETAIL MEASUREMENTS**

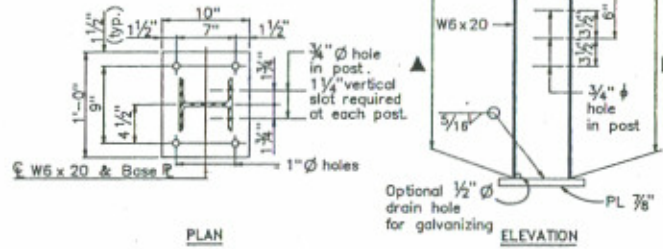
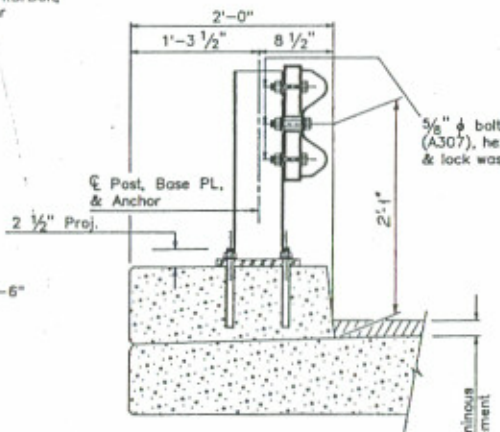
STR. NO.	▲	■	*
H-17-J	1'-9"	1'-9"	6'-3"
H-17-L	1'-9"	1'-9"	6'-3"



Top and bottom tube splices shall not be located together but staggered as shown.



Req'd. near all bridge exp'n. joints as shown on the plans.



**INFORMATION ONLY**

Description	Unit	Per Lin. Ft.
Structural Steel (Galvanized)	Lb.	51.6 Avg.
Bridge Rail Type 3R - W Beam	Lin.Ft.	1.0

Note: At each expansion device add 235 lb. of Structural Steel (Galvanized)

**NOTES**

ALL TUBES SHALL BE FABRICATED FROM ASTM A-500 GRADE B.

ALL POSTS SHALL BE FABRICATED FROM ASTM A-36 STEEL. ALL SPLICES AND EXPANSION DEVICES FOR TUBE SHALL BE FABRICATED FROM ASTM A572, GRADE 50. THE ABOVE MATERIAL W-BEAM, AND ALL ANCHOR BOLTS AND MISCELLANEOUS BOLTS, NUTS AND WASHERS SHALL BE GALVANIZED AFTER FABRICATION IN ACCORDANCE WITH THE SPECIFICATIONS.

POSTS, BASE PLATES, ANCHOR BOLTS, MISCELLANEOUS BOLTS, NUTS, WASHERS, TUBES, TUBE EXPANSION DEVICES, TUBE SPLICES, END PLATES, W-BEAM, AND W-BEAM EXPANSION DEVICES SHALL BE INCLUDED IN ITEM 606 - BRIDGE RAIL TYPE 3R.

THE BACKING TUBES SHALL BE SHOP BENT OR FABRICATED TO FIT HORIZONTAL CURVE WHEN RADIUS IS LESS THAN 1500 FEET.

TUBES SHALL BE CONTINUOUS OVER NOT LESS THAN TWO POSTS.

POSTS SHALL BE PERPENDICULAR TO THE GRADE OF THE DECK.

CONTRACTOR SHALL PROVIDE TERMINAL SECTION (FLARED) WHEN NO APPROACH GUARD RAIL IS USED WITH THE COST INCLUDED IN ITEM 606 BRIDGE RAIL, TYPE 3R. FOR DETAILS SEE STD. M-606-1.

FOR ADDITIONAL DETAILS, SEE STD. M-606-1.

OPTIONAL DRAIN HOLE FOR GALVANIZING MAY BE DRILLED, PUNCHED, OR CLIPPED LEAVING SMOOTH SURFACES AND TRANSITIONS. NO FLAME CUTTING OR AIR CARBON ARC GOUGING IS ALLOWED.

**STRUCTURAL STEEL:**

AASHTO M-183(ASTM A-36)  $f_y = 20,000$

AASHTO M-223(ASTM A-572)  $f_y = 37,500$   
 GRADE 50

COLD FORMED ASTM A-500  $f_y = 27,600$   
 GRADE B

**DIVISION OF HIGHWAYS**  
**BRIDGE RAIL TYPE 3R**

DESIGNER	M. Pulver	STRUCTURE NUMBER	H-17-J
DETAILER	R. Dickey	NUMBERS	H-17-L
DRAWING NUMBER	4	OF	5
DRAWING		DRAWING	

REVISION DATES	DATE	DESCRIPTION
5/85	6/85	3/86

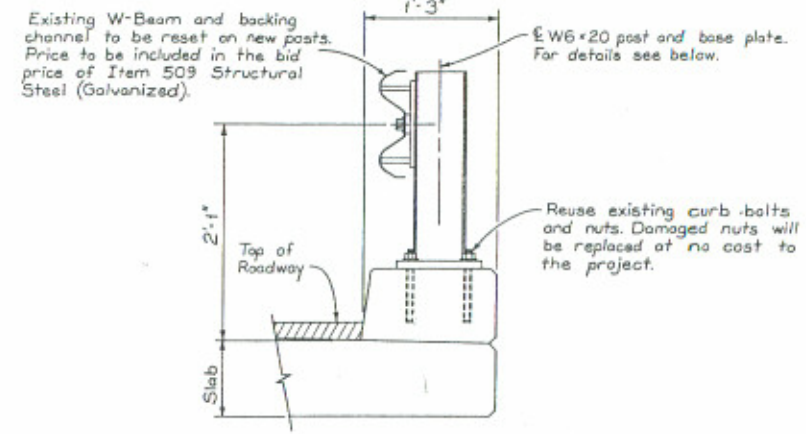
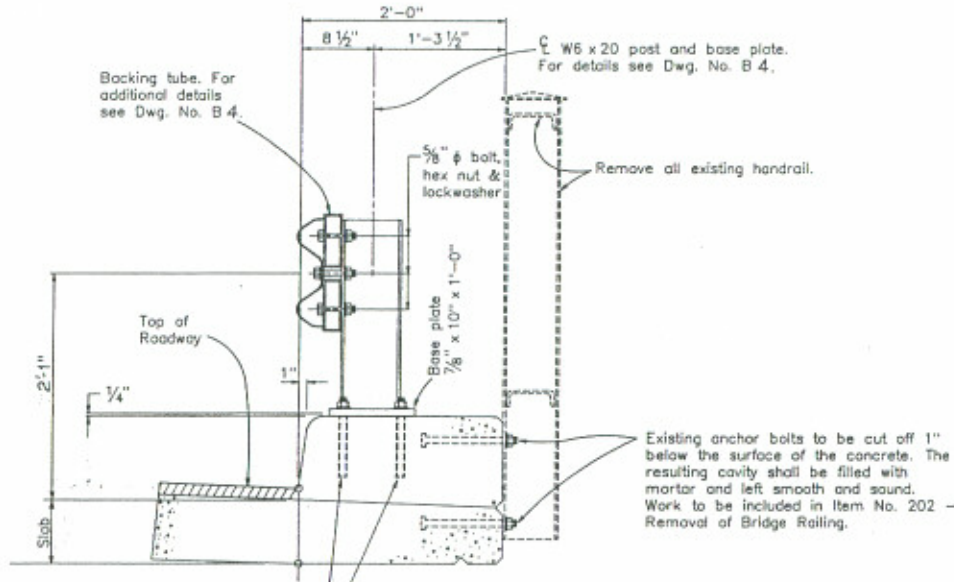
NO NUMBER CHANGES 1612028 JUL 1 (FORM 5705-MS105) BRT

DESIGNED BY	DATE	CHECKED BY	DATE

BRT1

AS CONSTRUCTED		FED. ROAD REGION	DIVISION	PROJ. NO.	SHEET NO.	SHE. TOTAL
NO REVISIONS	REVISED 3/14/87	VIII	COLD.	IR 25-2(195)	28	

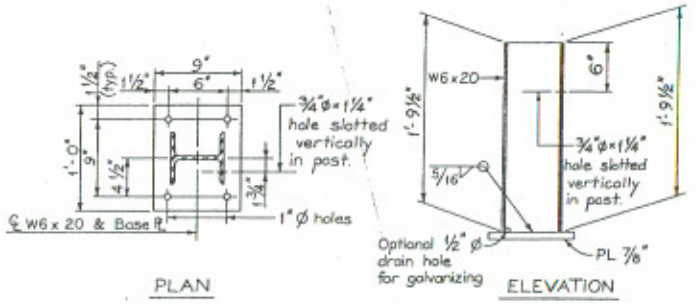
REVISIONS	



POST REPLACEMENT DETAIL  
 For Str. No's H-17-J & H-17-L (Outside Only)

2 - 3/8"  $\phi$  x 1'-1" long H.S. galvanized rods fully threaded, with hex nuts and lock washers. Rods to be set in 1 1/4"  $\phi$  corad holes with an approved epoxy grout (4 rods required per post).  
 Note: The coring of holes into the concrete and the epoxy grout to be included in Item 606 - Bridge Rail Type 3R.  
 Use steel shims as required under Base Plate.

BRIDGE RAIL TYPE 3R  
 For Str. No's H-17-J & H-17-L (Median Side Only)



PLAN  
 ELEVATION  
 POST DETAIL  
 For Str. No's H-17-J & H-17-L (Outside Only)

GENERAL NOTES

ALL WORK SHALL BE DONE ACCORDING TO THE STANDARD SPECIFICATIONS OF THE DIVISION OF HIGHWAY, STATE OF COLORADO, APPLICABLE TO THE PROJECT.

DIMENSIONS CONTAINED IN THESE PLANS ARE CALCULATED FROM THE "AS CONSTRUCTED PLANS." THESE DIMENSIONS MAY BE ADJUSTED TO MEET THE EXISTING STRUCTURE. THE CONTRACTOR SHALL VERIFY ALL DEPENDENT DIMENSIONS IN THE FIELD BEFORE ORDERING OR FABRICATING ANY MATERIAL.

DRAWINGS REFLECT THE FINISHED CONDITION AND NOT THE EXISTING CONDITIONS. ALL WORK TO GET TO FINISHED PRODUCT WILL BE INCLUDED IN THE COST.

DESIGNED BY	DATE	DESIGNED BY	DATE
CHKD BY	DATE	CHKD BY	DATE
APPROVED BY	DATE	APPROVED BY	DATE

SUMMARY OF QUANTITIES

Item No.	Description	Unit	Str. No. H-17-J	Str. No. H-17-L	Str. No.	Str. No.	Str. No.	Str. No.	Str. No.	Str. No.
202	Removal of Bridge Railing	Lin.Ft.	234225	232225						
606	Bridge Rail Type 3R	Lin.Ft.	100	100						

DIVISION OF HIGHWAYS  
 DETAILS FOR INSTALLING BRIDGE RAIL  
 SUMMARY OF QUANTITIES

DESIGNER	M. Pulver	STRUCTURE NUMBER	H-17-J
DETAILER	R. Dickey	STRUCTURE NUMBER	H-17-L
DRAWING NUMBER B 5		OF 5 DRAWINGS	

REVISION DATES	(SHE. NUMBER STAGE ONLY)
6/85 9/85	

NO NUMBER ON 85 16 56 13 DUR 1 0094H STD5 HSTDS) BRT22

BRT22