

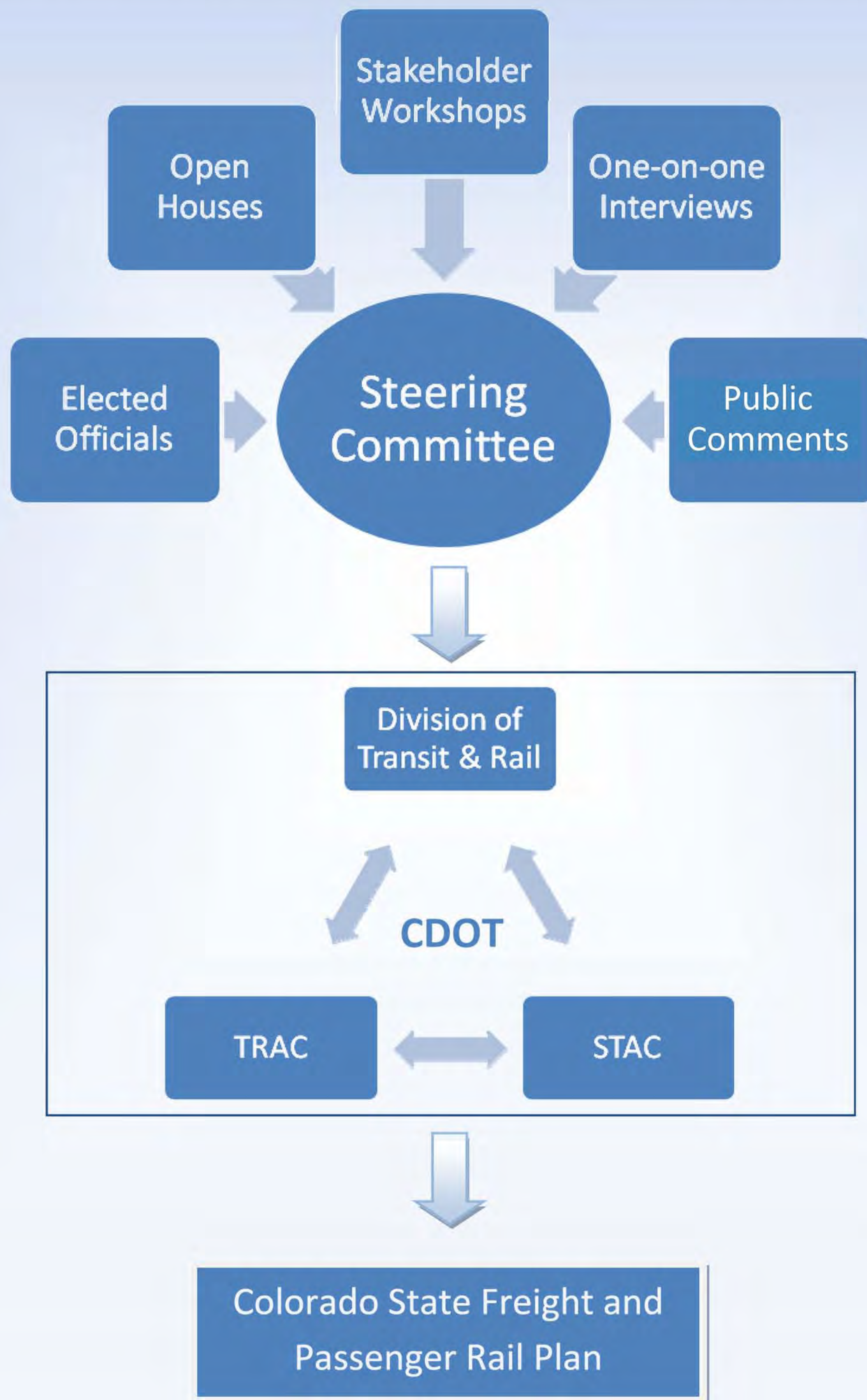
WELCOME!



Open House

Why Are You Here Today?

CDOT would like stakeholders to help the Division of Transit and Rail consider and identify passenger and freight rail needs



Why Develop a State Rail Plan?

- Provide a road map for improving/expanding rail infrastructure and services
- Provide education related to freight and passenger rail transportation
- Identify potential funding sources

Passenger Rail Investment and Improvement Act (PRIIA) Requirements

In order for Colorado to qualify for federal funding for rail projects the following 12 elements must be included in a State Rail Plan:

1. Inventory of Rail System, Services and Facilities
2. Evaluation of Rail Lines
3. Review of Connections with other Transportation Modes
4. Review of Existing Publicly Funded Projects
5. General Transportation, Economic and Environmental Impacts of Rail Service
6. Performance Evaluation of Passenger Services
7. Passenger rail Service Objectives
8. High Speed Rail Corridor Development
9. Rail Infrastructure Needs Assessment – Stakeholder Input
10. Long Range Service and Investment Program; Proposed Projects
11. Determination of Public and Private Benefits
12. Financing Alternatives



PARSONS
BRINCKERHOFF

Stakeholder Involvement

Colorado State Freight and Passenger Rail Plan Steering Committee

- Amtrak – Jonathan Hutchison
- BNSF Railway – Sarod Dhuru
- CDOT Rail Plan Project Manager – Mehdi Baziar
- CDOT Rail Plan Deputy Project Manager – Wendy Wallach
- CDOT Planning and Performance Manager – Sandi Kohrs
- Colorado Association of State Transit Agencies (CASTA) – Ann Rajewski
- Colorado Counties Inc. (CCI) – Gary Beedy
- Colorado Department of Agriculture – Tim Larsen
- Colorado Municipal League (CML) – Mark Radtke
- Colorado Office of Economic Development – Matt Cheroutes
- OmniTRAX – Mike Ogborn
- Pikes Peak Area Council of Governments – Craig Casper (representing all Colorado MPOs)
- Progressive 15 (representing Action 22 and Club 20) – Cathy Shull
- Regional Transportation District (RTD) – Henry Stopplecamp
- San Luis and Rio Grande Railroad – Steve Gregory
- State Transportation Advisory Committee (STAC) – Vince Rogalski
- Union Pacific Railroad – Dick Hartman

Additional Outreach

- Stakeholder Group – 100 + Diverse Members
- Transit and Rail Advisory Committee (TRAC)
- State Transportation Advisory Committee (STAC)
- Other Industry Sector Meetings
- Various One-on-One Meetings

Workshop and Open House Meetings

- August 15 – Akron
- August 17 – Limon
- August 23 – Denver
- August 25 – Grand Junction
- August 31 – La Junta
- September 1 - Alamosa



Colorado Rail Vision and Draft Goals

Colorado Rail Vision

- The Colorado rail system will improve the movement of freight and passengers in a safe, efficient, coordinated and reliable manner. In addition, the system will contribute to a balanced transportation network, cooperative land use planning, economic growth, a better environment and energy efficiency. Rail infrastructure and service will expand to provide increased transportation capacity, cost effectiveness, accessibility and intermodal connectivity to meet freight and passenger market demands through investments which include public-private partnerships.

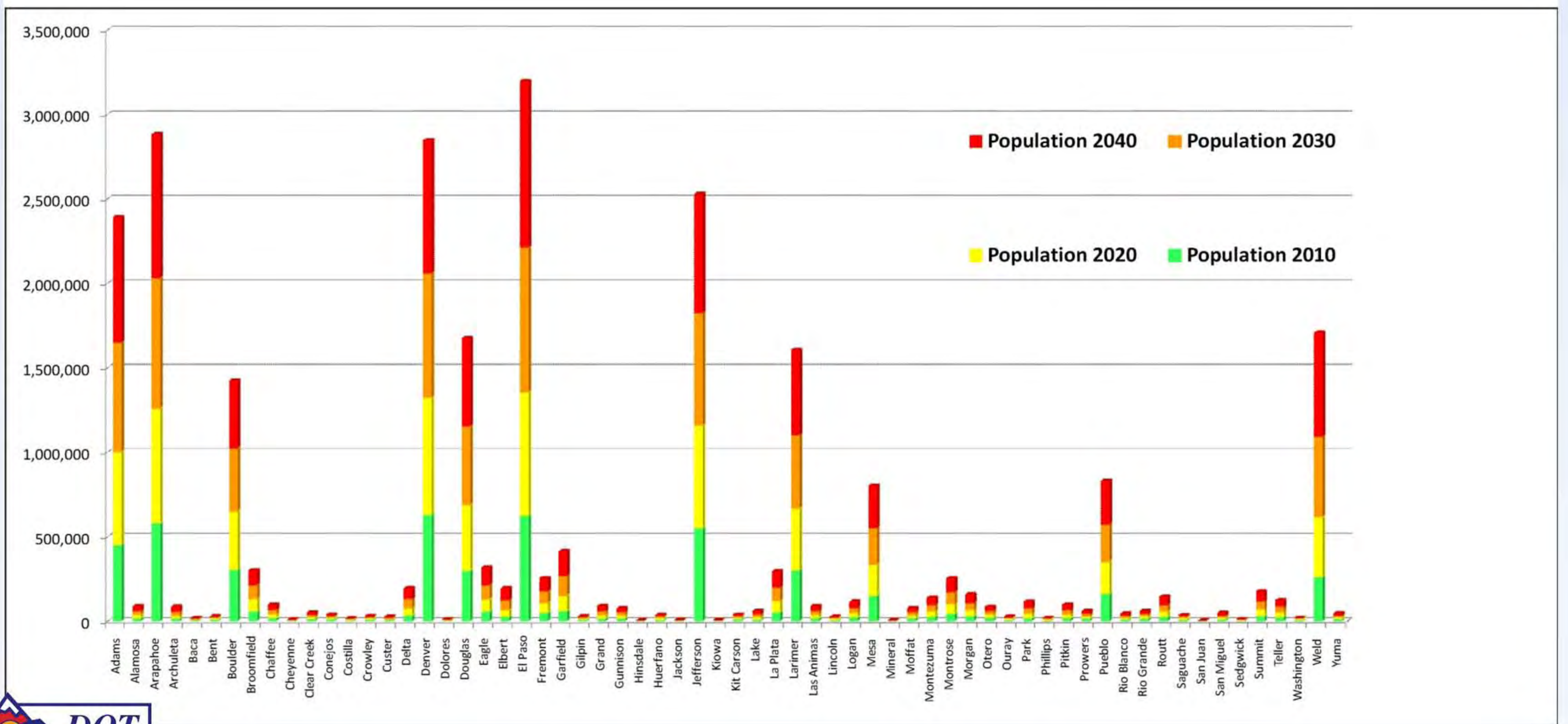
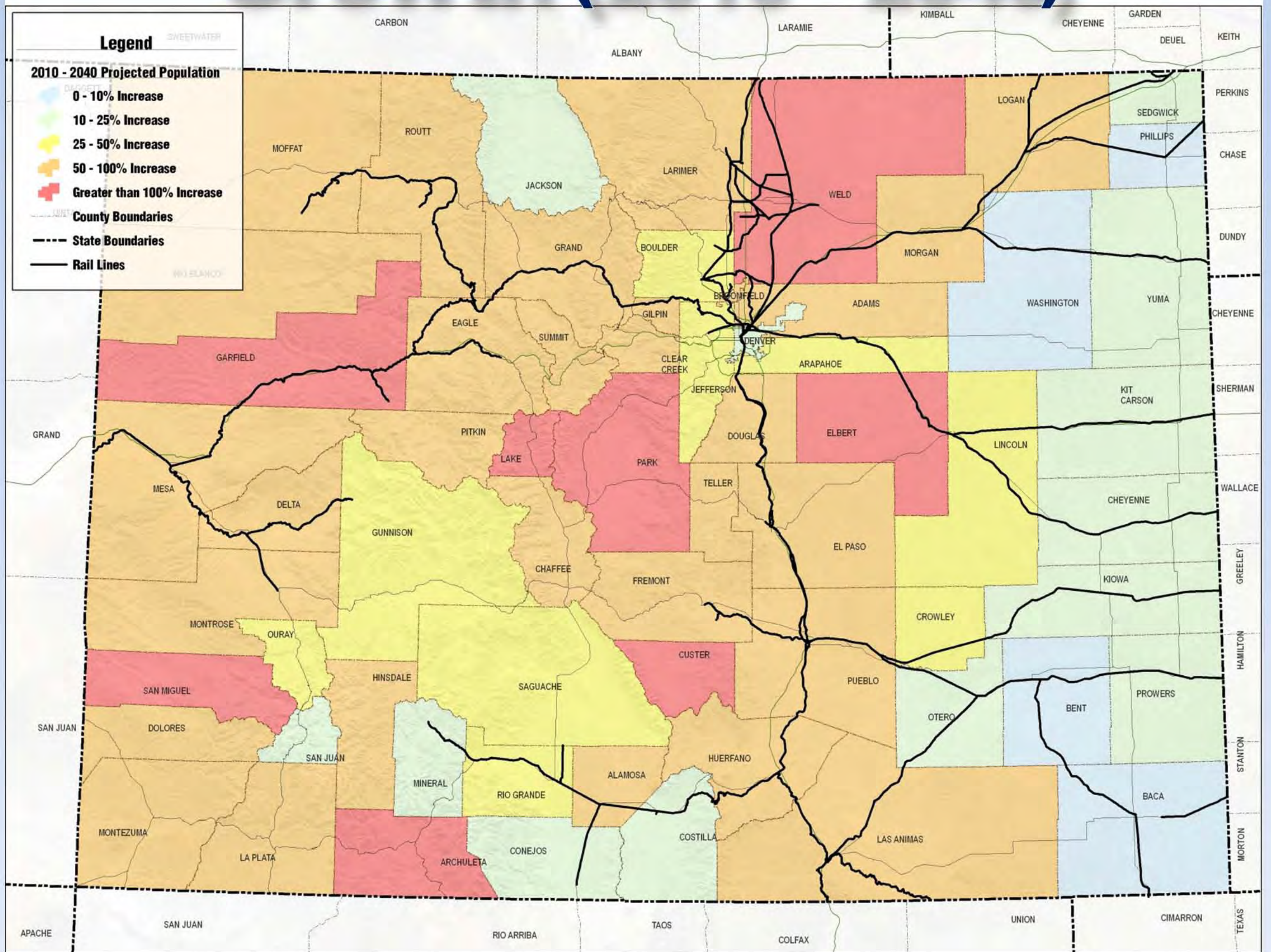
Preliminary Goals Linked to Colorado Rail Vision

1. Create a balanced transportation system utilizing cooperative land use planning to create intermodal connectivity and accessibility without compromising existing service and infrastructure.
2. Provide for the safety of people, infrastructure and goods.
3. Expand rail infrastructure and freight and passenger rail services to meet future demand through strategic investments which include public-private partnerships.
4. Promote through education the energy efficiency, environmental, and economic benefits of freight and passenger rail transportation throughout the state.
5. Utilize the efficiencies of freight and passenger rail to develop livable communities which enhance economic growth throughout the state.



**PARSONS
BRINCKERHOFF**

Projected Population Growth (2010 - 2040)

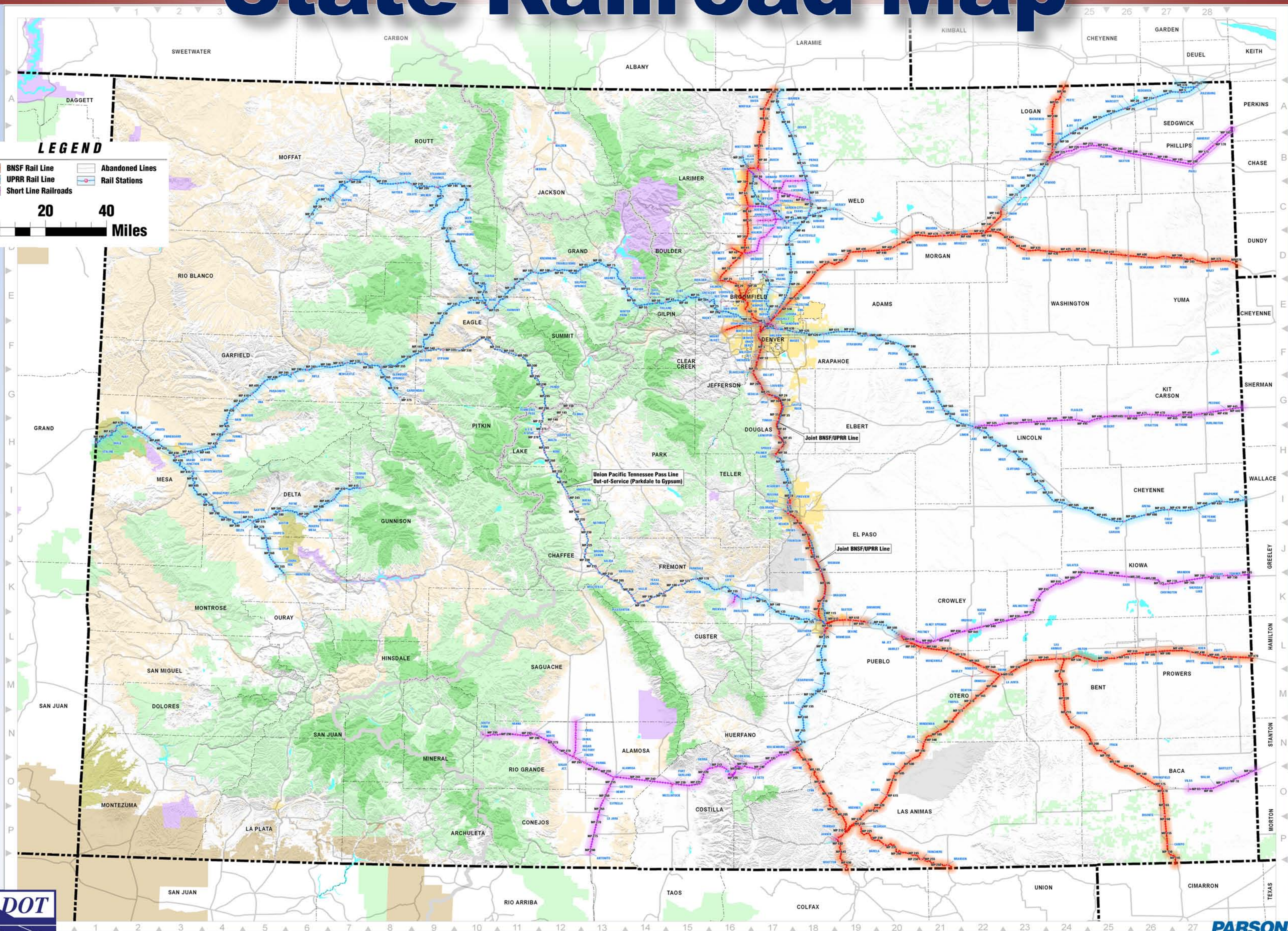


State Railroad Map

LEGEND

- BNSF Rail Line
- UPRR Rail Line
- Short Line Railroads
- Abandoned Lines
- Rail Stations

0 20 40 Miles



COLORADO STATE FREIGHT AND PASSENGER RAIL PLAN

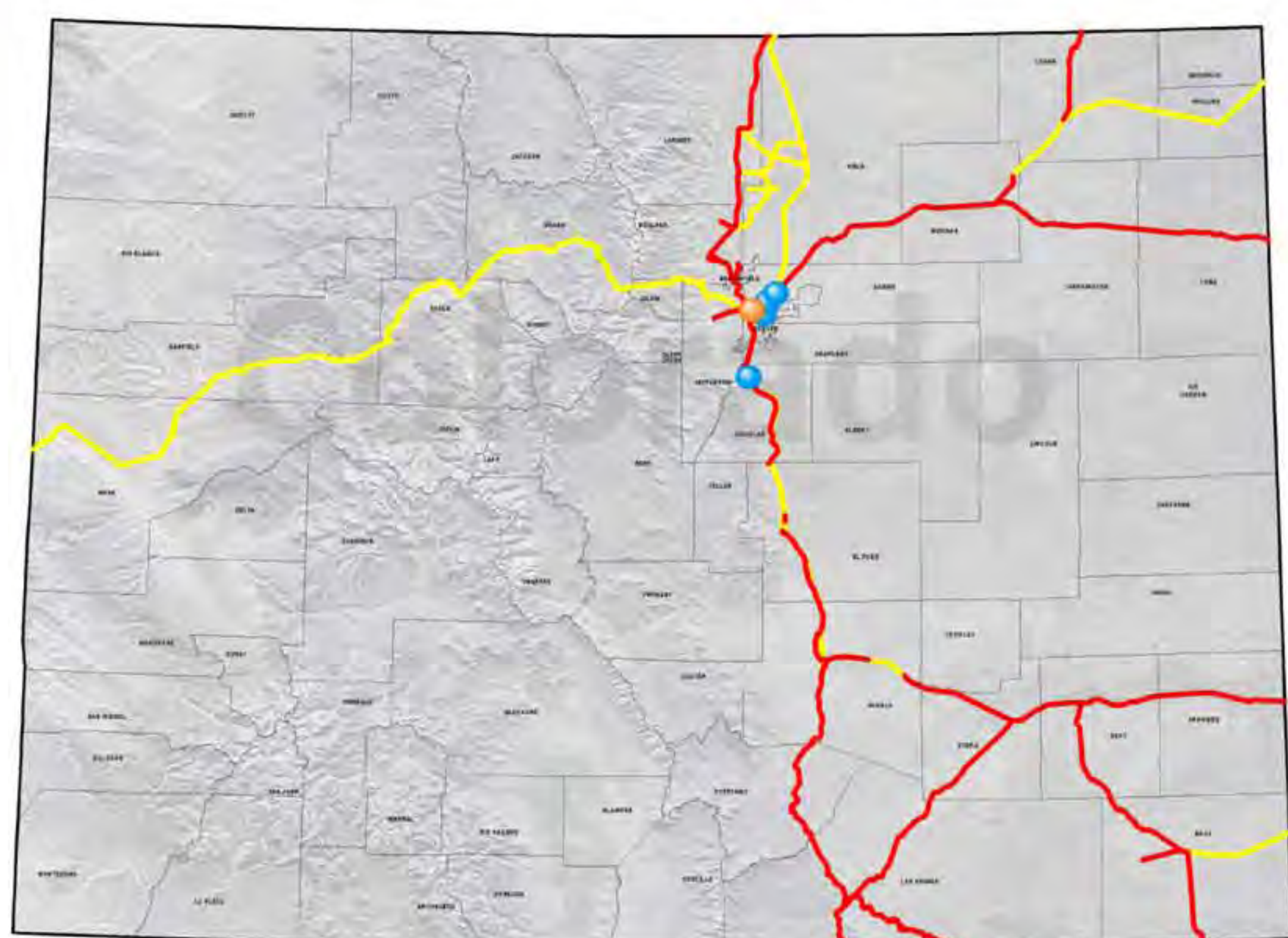
Major Railroads in the State (BNSF and UP)

Class I Railroads

Class I Railroad Definition: A line haul freight railroad with 2008 operating revenues in excess of \$400 Million.

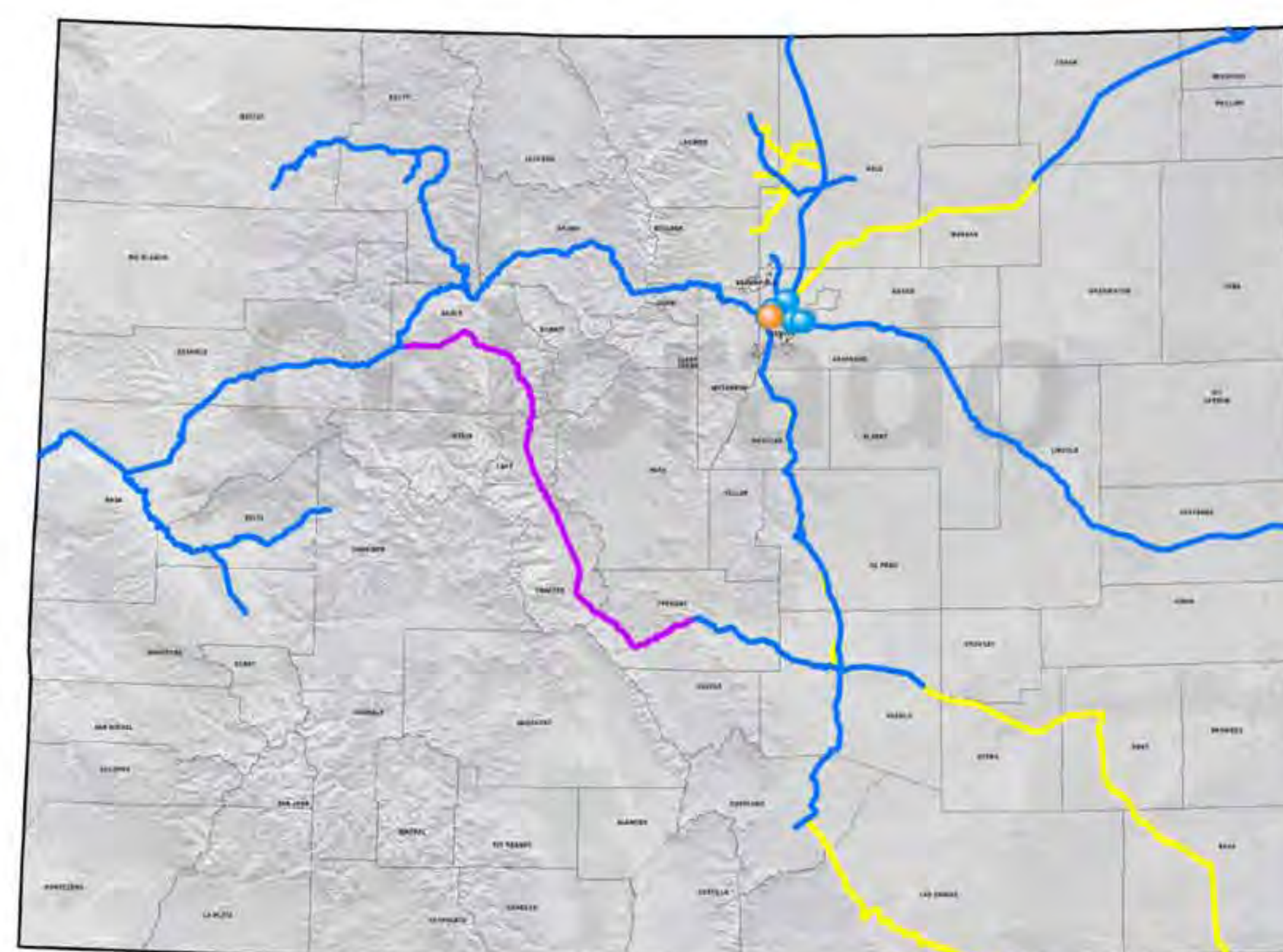
Colorado Characteristics	Burlington Northern Santa Fe	Union Pacific
Track Data		
Miles of Owned Track Operated	773	1,463
Miles of Trackage Rights	533	680
Miles of Abandoned Track (Since 2007)	1.6 Miles	2.2
Miles of Out-of-Service Track	0	126.6
Economic Data		
2010 Employees (in Colorado)	1,112	1,294
2010 Annual Payroll	\$83,000,000	\$106,000,000
2010 Rail Cars Originating	81,009	240,576
2010 Rail Cars Terminating	172,459	121,511
Rail Yards	Denver, La Junta, Pueblo, Sterling, Trinidad	Denver, Grand Junction, Pueblo, Trinidad
Intermodal Hub Centers	Denver	Denver
Shops	Denver, Golden	Denver, Pueblo, Grand Junction
Top Five Commodities Shipped from Colorado		
1.	Industrial Products	Coal
2.	Consumer Products	Intermodal-Wholesale
3.	Agricultural Products	Wheat and Food Grains
4.	Coal	Ferrous Metal Scrap
5.	Other	Roofing Products
Top Five Commodities Received in Colorado		
1.	Coal	Coal
2.	Consumer Products	Intermodal-Wholesale
3.	Industrial Products	Non-Metallic Minerals
4.	Agricultural Products	Assembled Autos
5.	Other	Roofing Products

Burlington Northern Santa Fe's Colorado Rail Network



-  BNSF Owned Lines
-  BNSF Trackage Rights
-  BNSF Transload Facilities
-  BNSF Intermodal Facility

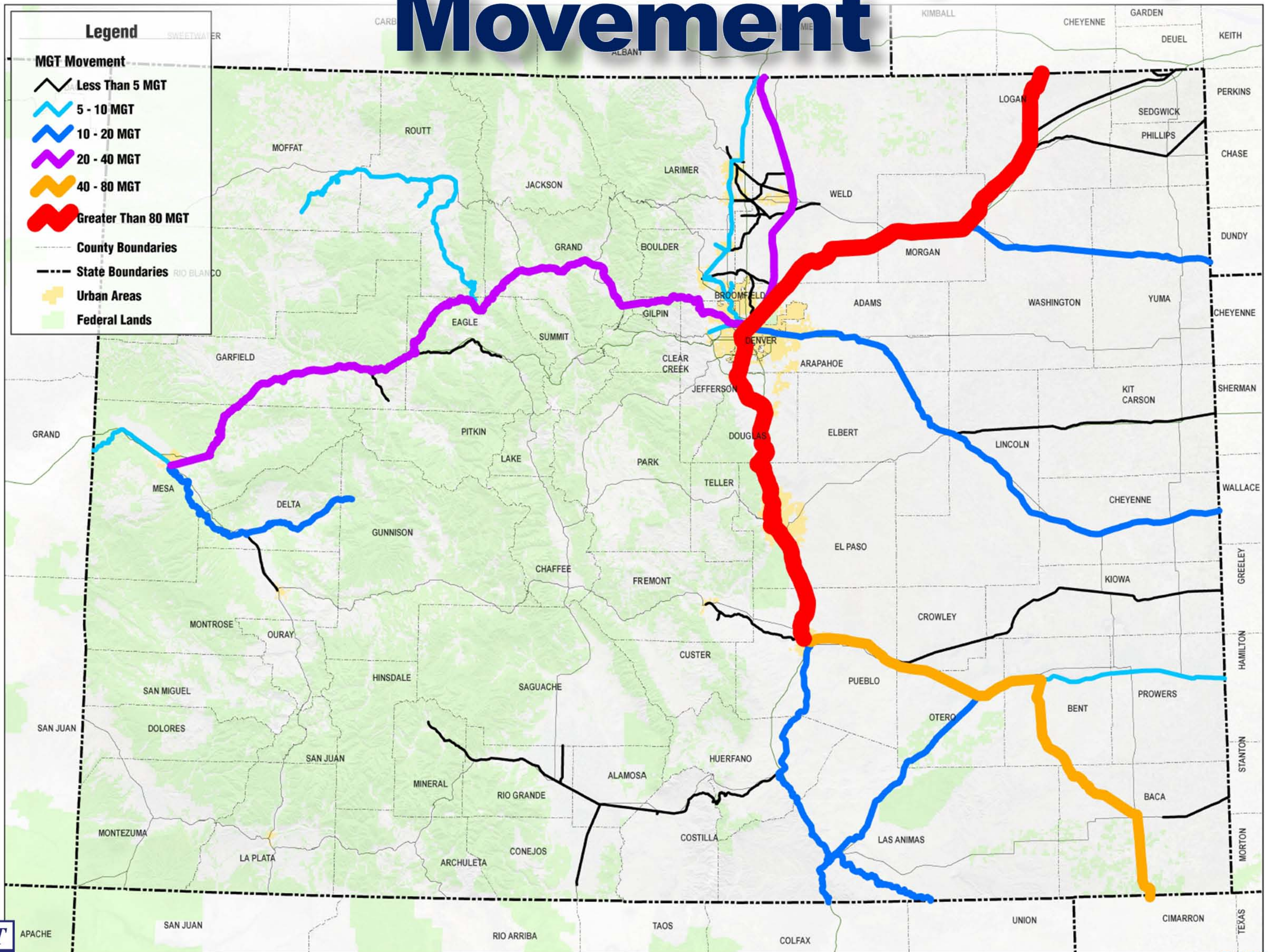
Union Pacific's Colorado Rail Network



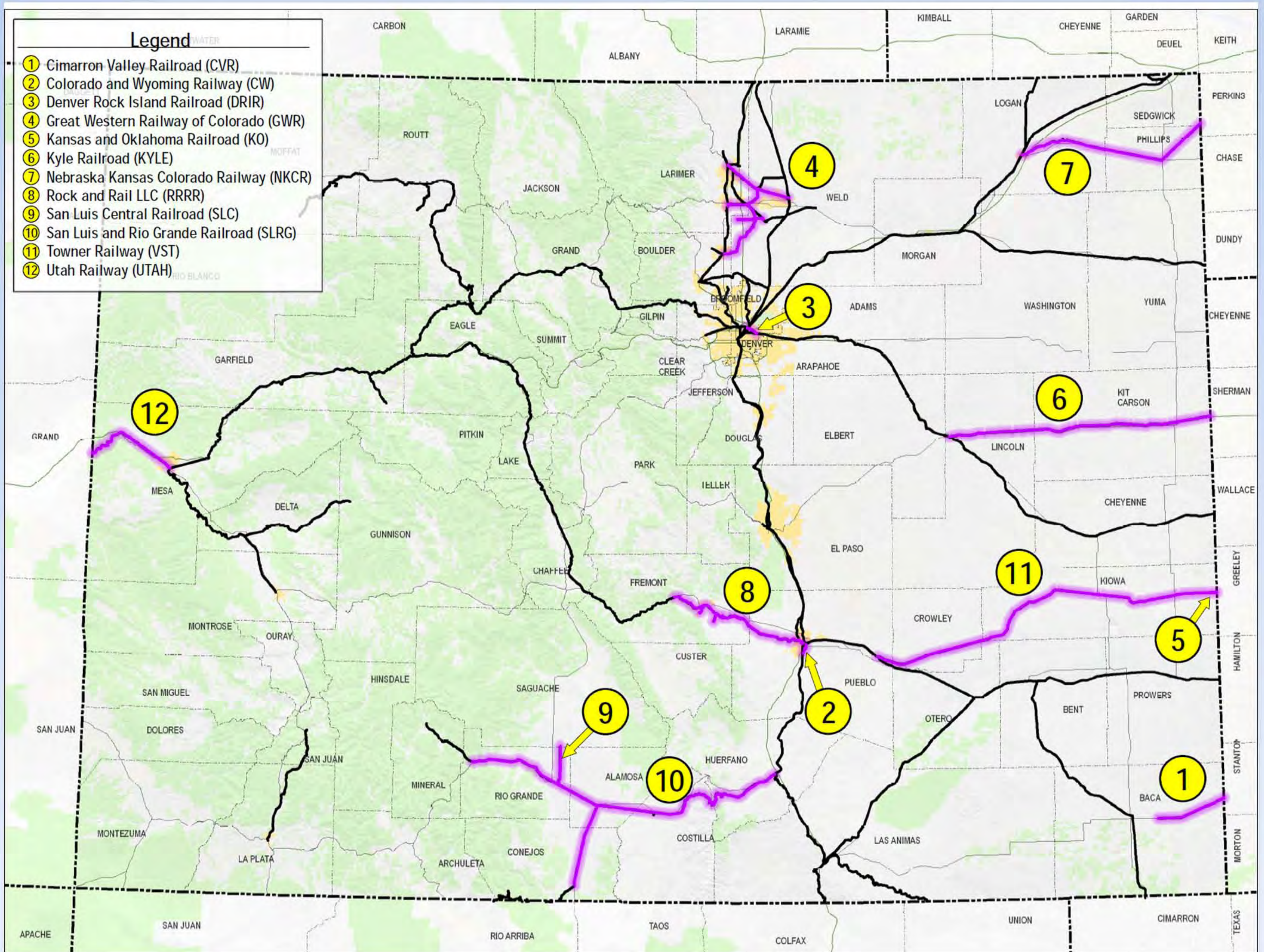
-  UP Owned Lines
-  UP Out-of-Service Lines
-  UP Trackage Rights
-  UP Transload Facilities
-  UP Intermodal Facility



Million Gross Ton (MGT) Movement



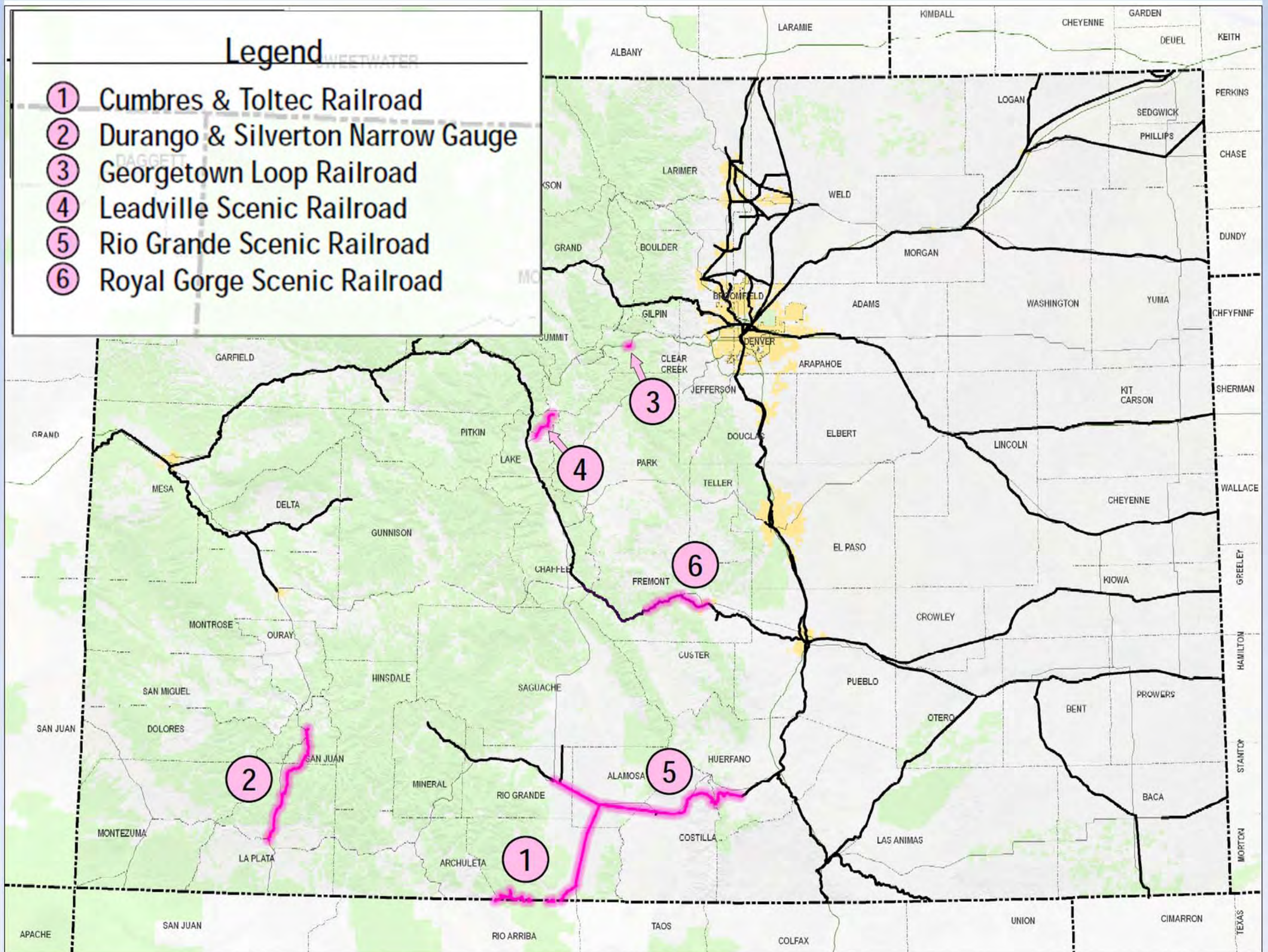
Short Line Railroads



Short Line Railroads	Miles of Owned Track	Miles of Trackage Rights	Primary Function
Cimarron Valley Railroad (CVR)	23	0	Agricultural
Colorado and Wyoming Railway (CW)	5	0	Switching
Denver Rock Island Railroad (DRIR)	4	3 (UP)	Switching
Great Western Railway of Colorado (GWR)	80	5 (BNSF, UP)	Agricultural, Mineral
Kansas and Oklahoma Railroad (KO)	3	0	Agricultural
Kyle Railroad (KYLE)	89	0	Agricultural, Industrial Products, Industrial Chemicals, etc.
Nebraska Kansas Colorado Railway (NKCR)	68	0	Agricultural
Rock and Rail LLC (RRRR)	16	40	Mineral
San Luis Central Railroad (SLC)	13	2 (SLRG)	Agricultural
San Luis and Rio Grande Railroad (SLRG)	150	5	Mineral, Agricultural
Towner Railway (VST)	122	0	Agricultural
Utah Railway (UTAH)	0	32 (UP)	Coal



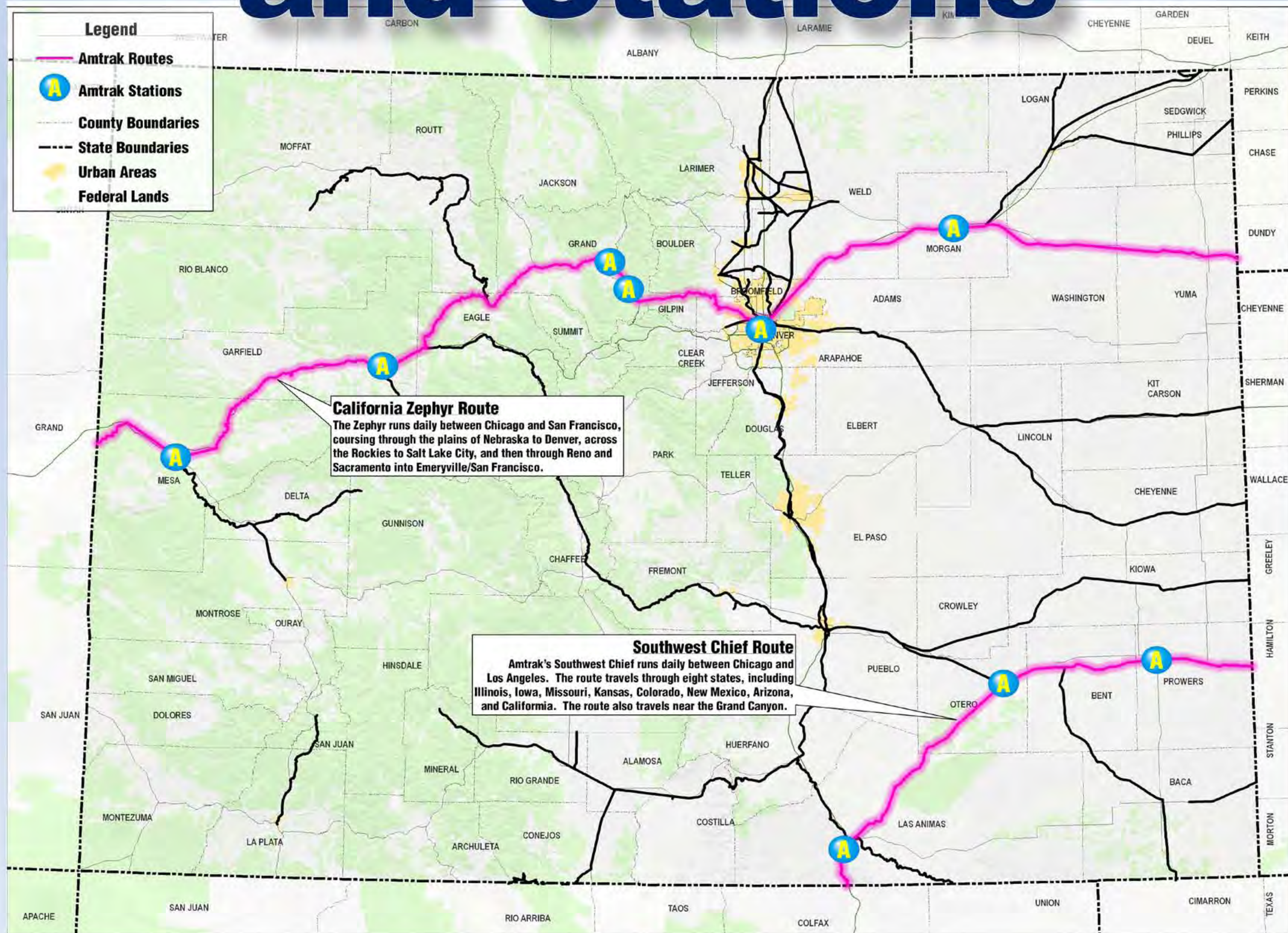
Scenic Railroads



Scenic Railroads	Miles of Owned Track	Gauge	Trips per Day Max / Min	Operations
Cumbres & Toltec Railroad	63.4	Narrow	2	Late May - Mid-October
Durango & Silverton Narrow Gauge	45.4	Narrow	4 / 1	Year-Round
Georgetown Loop Railroad	3.5	Narrow	6 / 1	Late April - December
Leadville Scenic Railroad	*	Narrow	2 / 1	Late May - Early October
Rio Grande Scenic Railroad	*	Standard		Late May - October
Alamosa to La Veta (Friday - Sunday)		Standard	3	Late May - October
Alamosa to Antonito (Wednesday / Saturday)		Standard	2 / 1	Late May - October
Alamosa to Monte Vista (Thursday)		Standard	1	Late May - October
Royal Gorge Route Railroad	12	Standard	4 / 1	Late May - December



Amtrak Routes and Stations

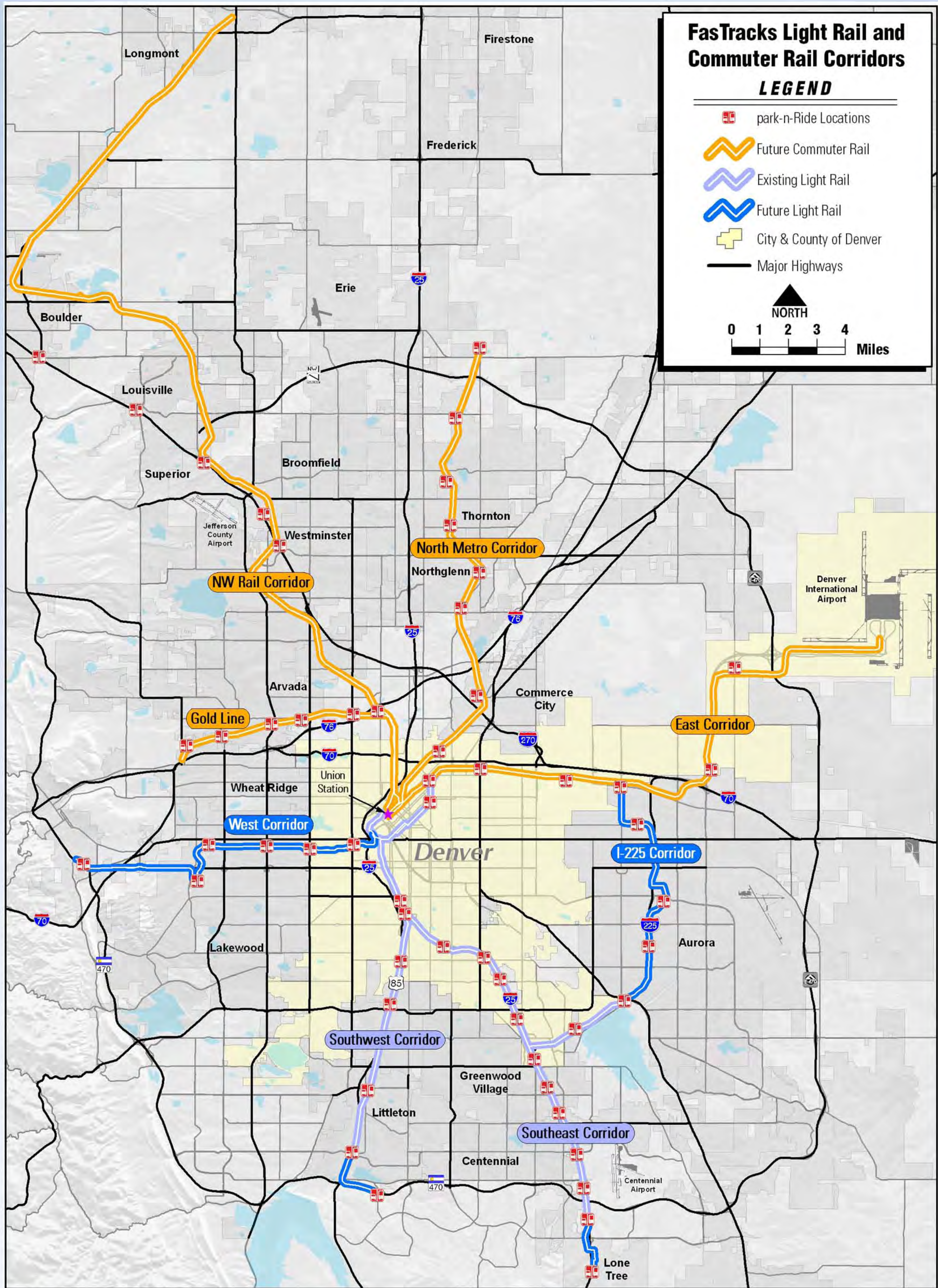


California Zephyr				
Station	Westbound Arrival	Westbound Departure	Eastbound Arrival	Eastbound Departure
Fort Morgan	5:05am	-	8:25pm	-
Denver	7:15am	8:05am	6:38pm	7:10pm
Fraser-Winter Park	10:07am	-	3:50pm	-
Granby	10:37am	-	3:12pm	-
Glenwood Springs	1:53pm	-	12:10pm	-
Grand Junction	4:10pm	-	10:23am	-
Southwest Chief				
Station	Westbound Arrival	Westbound Departure	Eastbound Arrival	Eastbound Departure
Lamar	6:59am	-	8:40pm	-
La Junta	8:15am	8:30am	7:31pm	7:41pm
Trinidad	9:50am	-	5:49pm	-

Amtrak Ridership, 2006 - 2010																
Station	FY2006			FY2007			FY2008			FY2009			FY2010			
	Boarding Riders	Alighting Riders	Total Riders	Boarding Riders	Alighting Riders	Total Riders	Boarding Riders	Alighting Riders	Total Riders	Boarding Riders	Alighting Riders	Total Riders	Boarding Riders	Alighting Riders	Total Riders	
Fort Morgan	1,311	1,333	2,644	1,465	1,455	2,920	1,523	1,655	3,178	1,438	1,541	2,979	1,591	1,758	3,349	
Denver	61,136	58,228	119,364	63,530	59,743	123,273	65,979	63,794	129,773	61,487	58,749	120,236	65,129	63,281	128,410	
Fraser	4,169	4,408	8,577	4,195	4,649	8,844	4,478	4,922	9,400	3,986	4,404	8,390	3,771	4,142	7,913	
Granby	1,238	1,490	2,728	1,914	1,594	3,508	1,757	1,872	3,629	1,477	1,544	3,021	1,789	1,866	3,655	
Glenwood Springs	13,207	14,305	27,512	14,946	17,751	32,697	17,471	19,013	36,484	13,943	15,428	29,371	16,502	17,725	34,227	
Grand Junction	10,574	11,182	21,756	11,979	13,136	25,115	13,779	14,523	28,302	11,148	12,244	23,392	14,193	14,642	28,835	
Lamar	946	792	1,738	925	758	1,683	885	759	1,644	983	739	1,722	1,065	832	1,897	
La Junta	3,439	3,492	6,931	3,231	3,325	6,556	3,828	3,647	7,475	3,506	3,303	6,809	3,753	3,511	7,264	
Trinidad	2,294	2,101	4,395	2,010	1,946	3,956	2,447	2,181	4,628	1,961	1,962	3,923	1,977	2,125	4,102	
TOTAL	98,314	97,331	195,645	104,195	104,357	208,552	112,147	112,366	224,513	99,929	99,914	199,843	109,770	109,882	219,652	

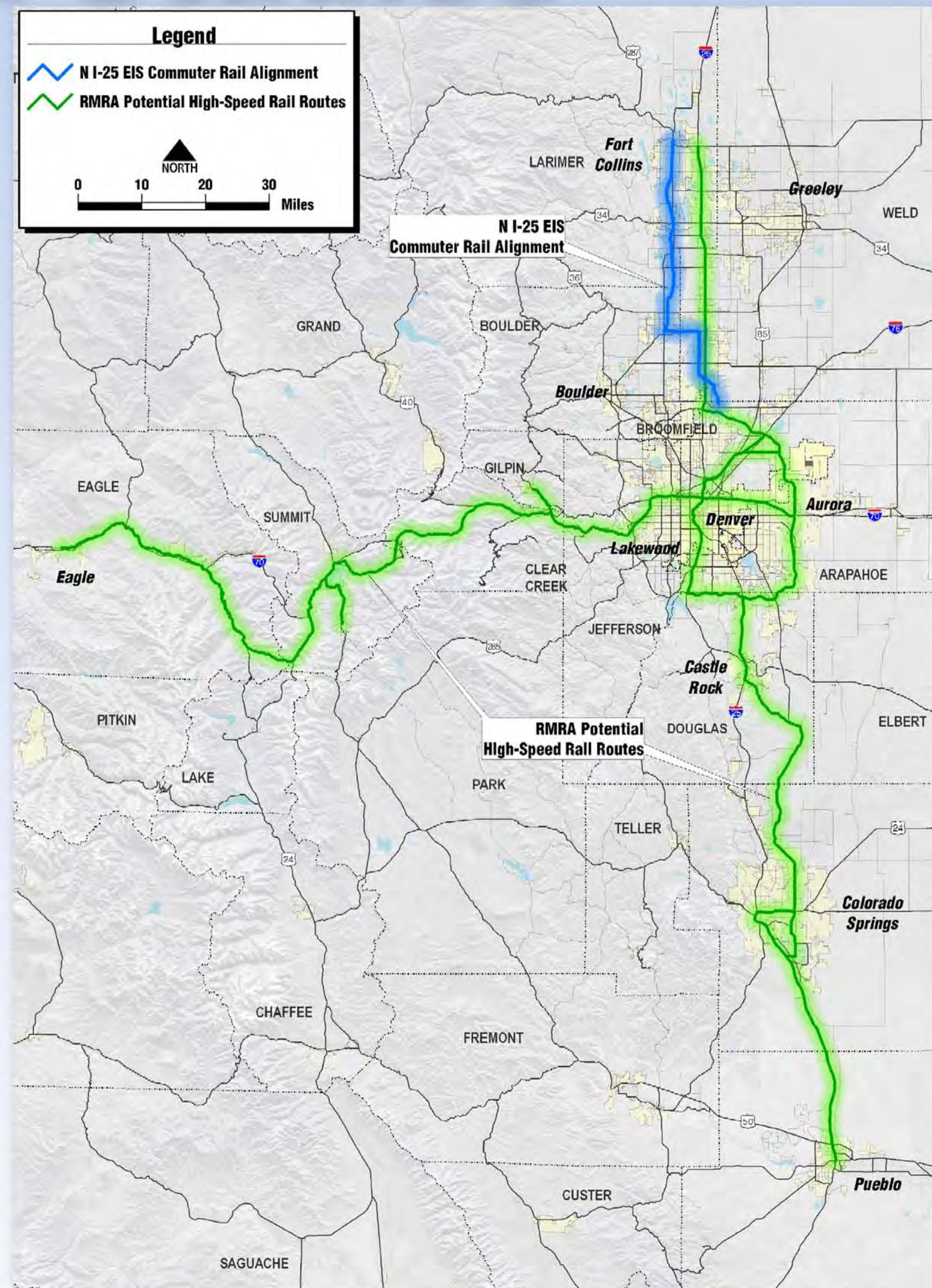


RTD Rail System



Other Passenger Rail Studies

- RMRA Study Completed in 2010
- North I-25 Environmental Impact Statement (EIS)



Other Passenger Rail Studies

- **Interregional Connectivity Study**

- **Advanced Guideway System Feasibility Study**



PHOTO COURTESY WIKIMEDIA COMMONS.



Colorado Rail Relocation Implementation Study (R2C2)

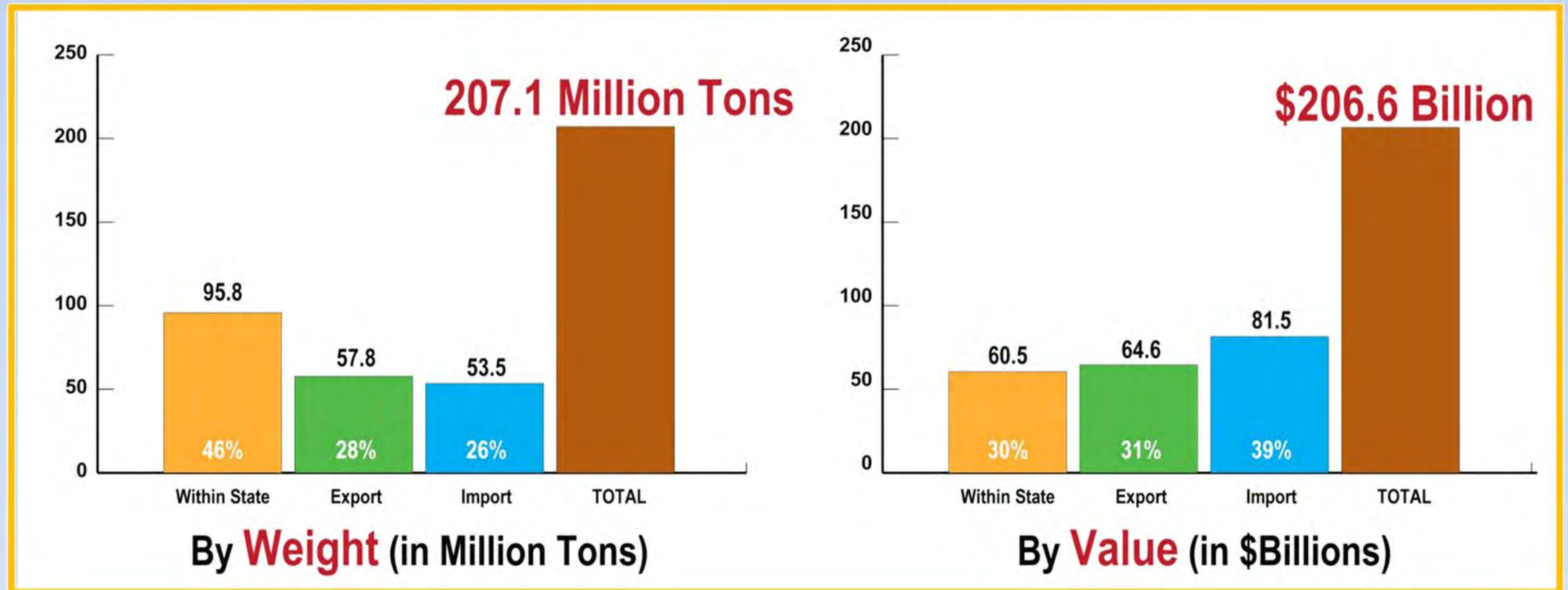
- **Study evaluating 2 potential alignments completed in 2009**
- **Future actions on hold pending findings/recommendations of State Freight and Passenger Rail Plan**
- **No imminent actions being considered by CDOT**



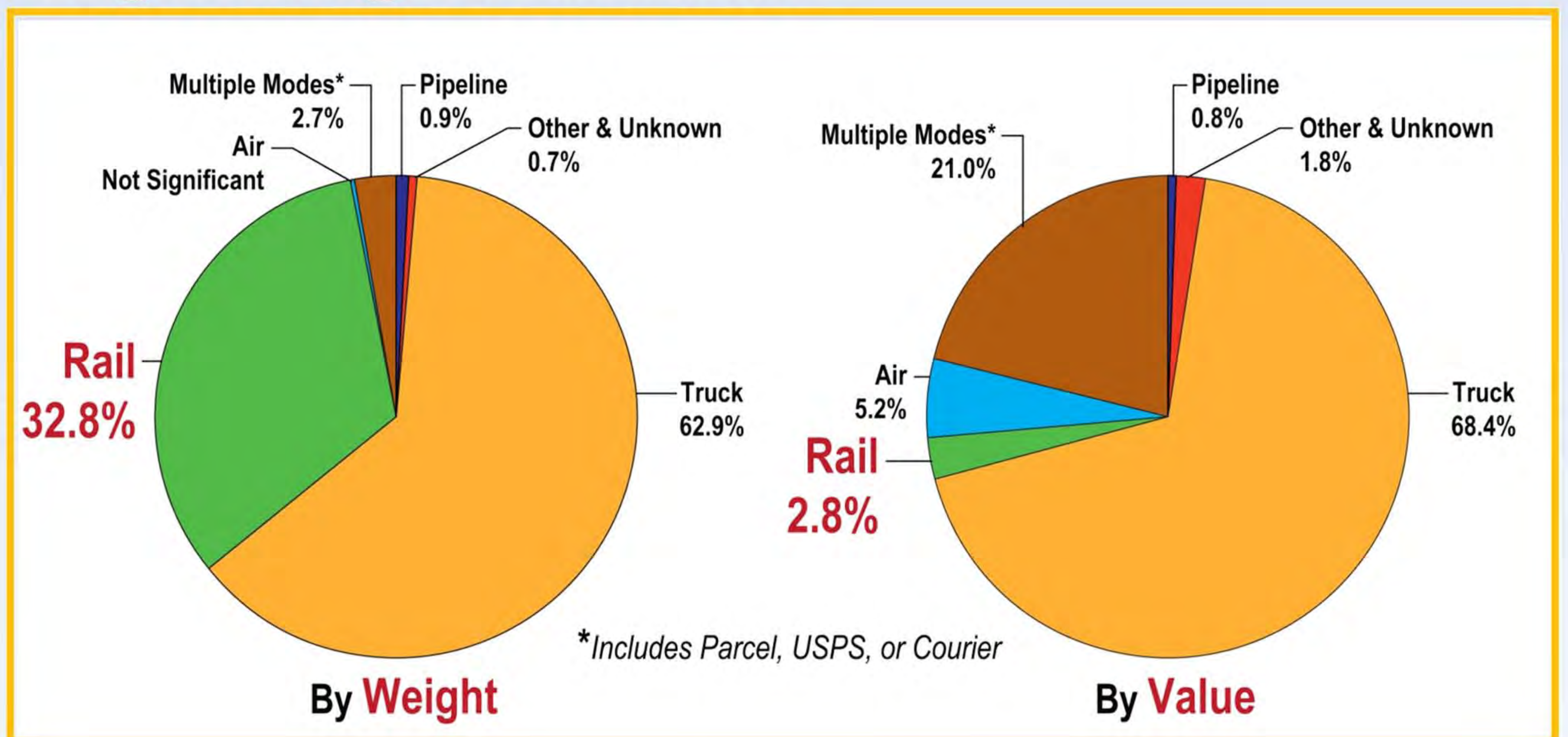
**PARSONS
BRINCKERHOFF**

Colorado Freight Characteristics

2007 Colorado Freight Shipments



Transportation Mode for Shipments Originating in Colorado



SOURCE: Freight Analysis Framework, USDOT, Federal Highway Administration



Movement of Top Commodities Shipped by Rail (2007)

Exports

Imports

1.
Coal



1.
Coal



2.
Alcohol



2.
Cereal Grains



3.
Coal & Petroleum Products



3.
Base Chemicals



4.
Cereal Grains



4.
Base Metals



5.
Article Metals



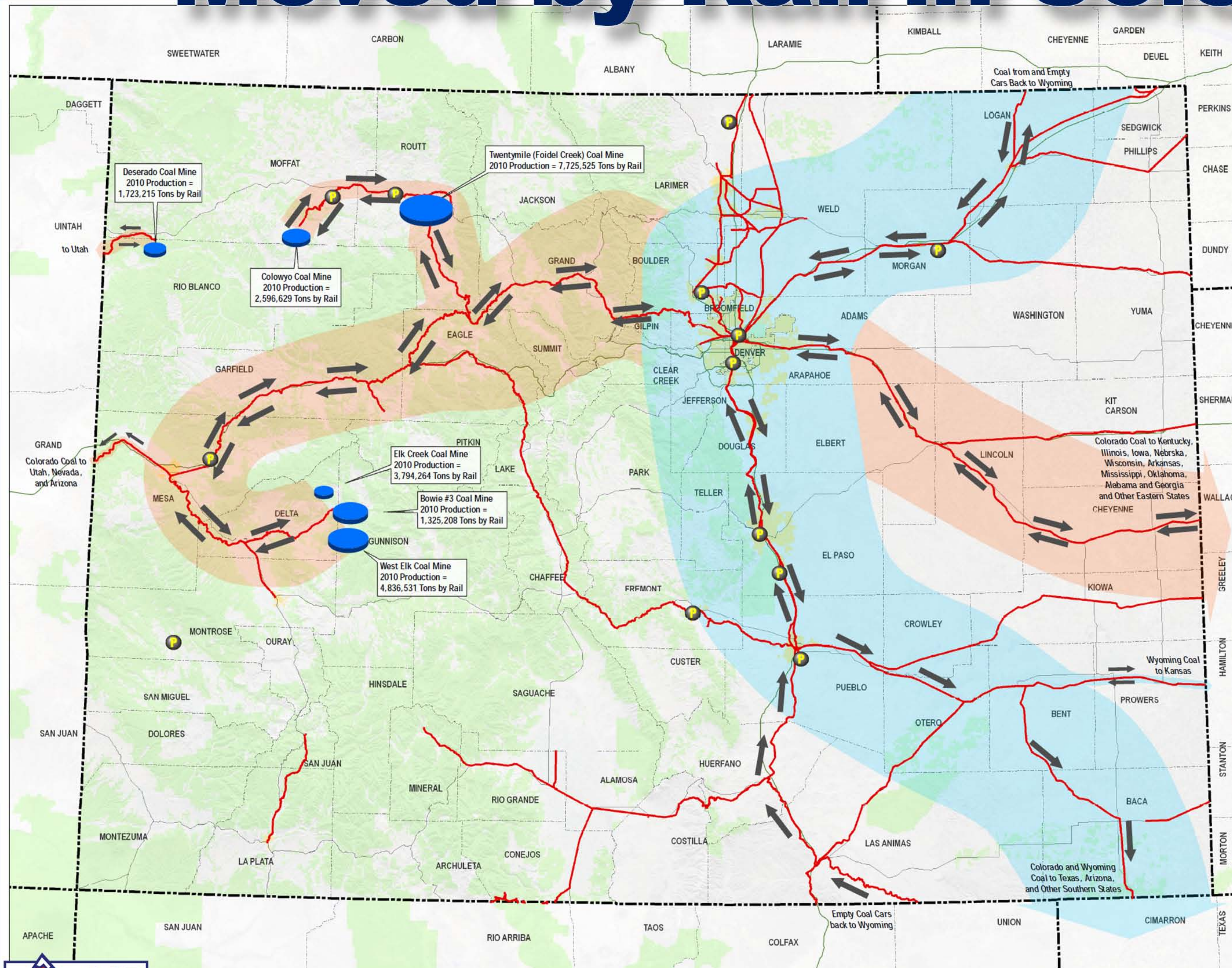
5.
Wood Products



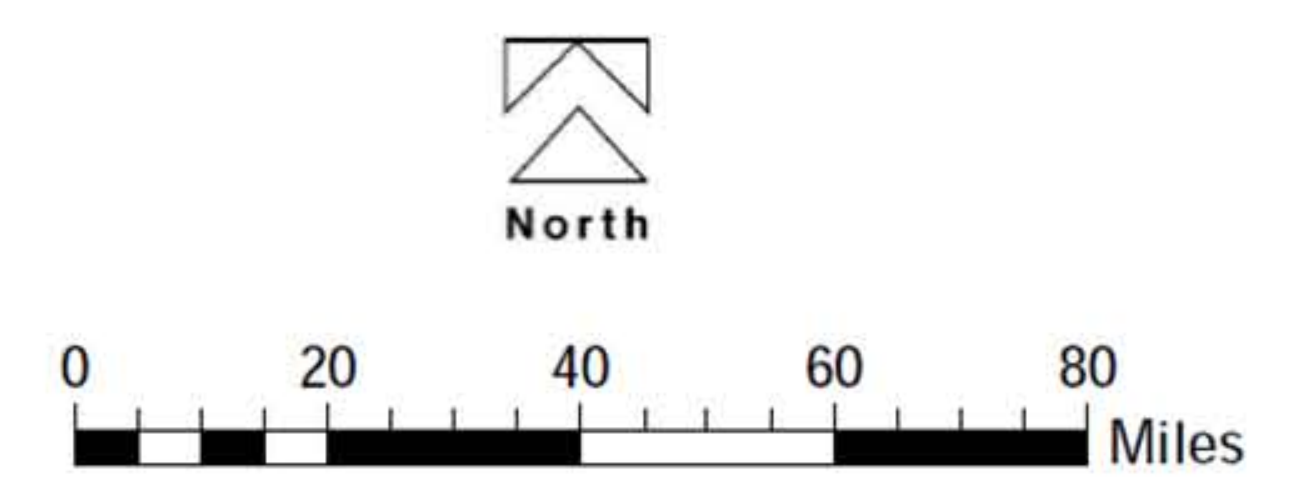
SOURCE: 2010 Freight Analysis Framework 3 (FAF3) with 2007 Economic Census Commodity Flow Survey



Coal is the Top Commodity Moved by Rail in Colorado



- Coal Fired Power Plants
- Rail Lines
- County Boundaries
- State Boundaries
- Urban Areas
- Federal Lands
- Coal Mines Shipping by Rail (the larger the symbol, the greater the production)
- Dominant Coal Movements**
- CO Origin Coal Movement
- WY Origin Coal Movement



Colorado is ranked 11th in U.S. coal production. The top coal-producing county in 2010 was Routt County with 7.73 million tons. 10 Colorado coal mines produced 25,205,411 tons of coal in 2010, the lowest production year since 1996.

Total Coal Produced in 2010: 25,205,411 Tons
 Total Coal Sold In State: 11,342,434 Tons (45%)
 Total Coal Sold Out-of-State: 13,358,867 Tons (53%)
 Total Coal Sold Internationally: 504,108 Tons (2%)
 Total Sales Value of 2010 CO Coal Production: \$1 Billion

Top 5 2010 Importers of Colorado Coal

- Utah - 2.97 Million Tons
- Kentucky - 1.76 Million Tons
- Mississippi - 1.66 Million Tons
- Tennessee - 1.21 Million Tons
- Alabama - 0.91 Million Tons

In 2010, 87% of Colorado mined coal was shipped by rail while 13% was shipped by truck.

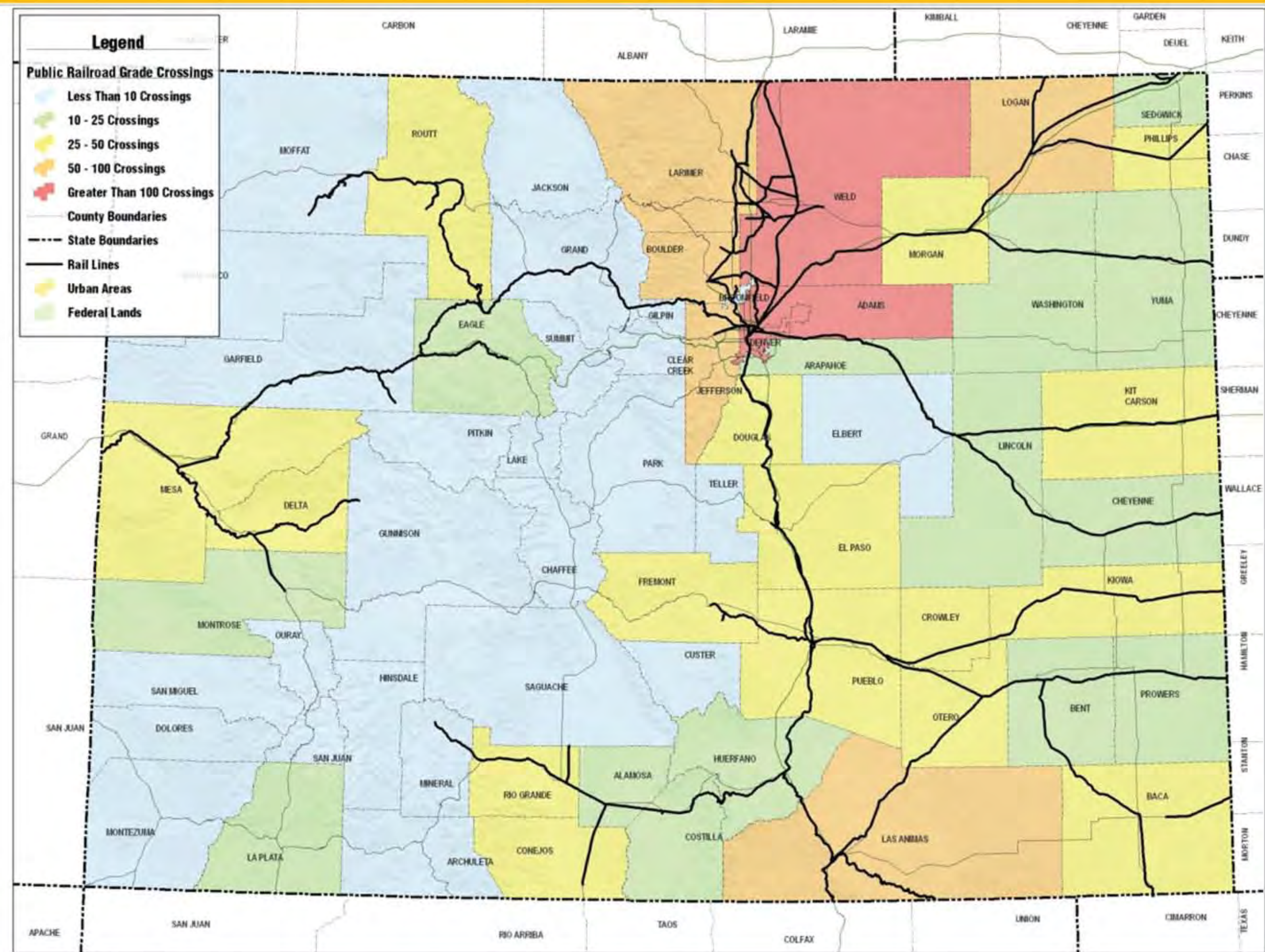
SOURCE - Colorado Mining Association Survey of Coal Producers and Colorado Geological Survey 2010 Coal Fact Sheet



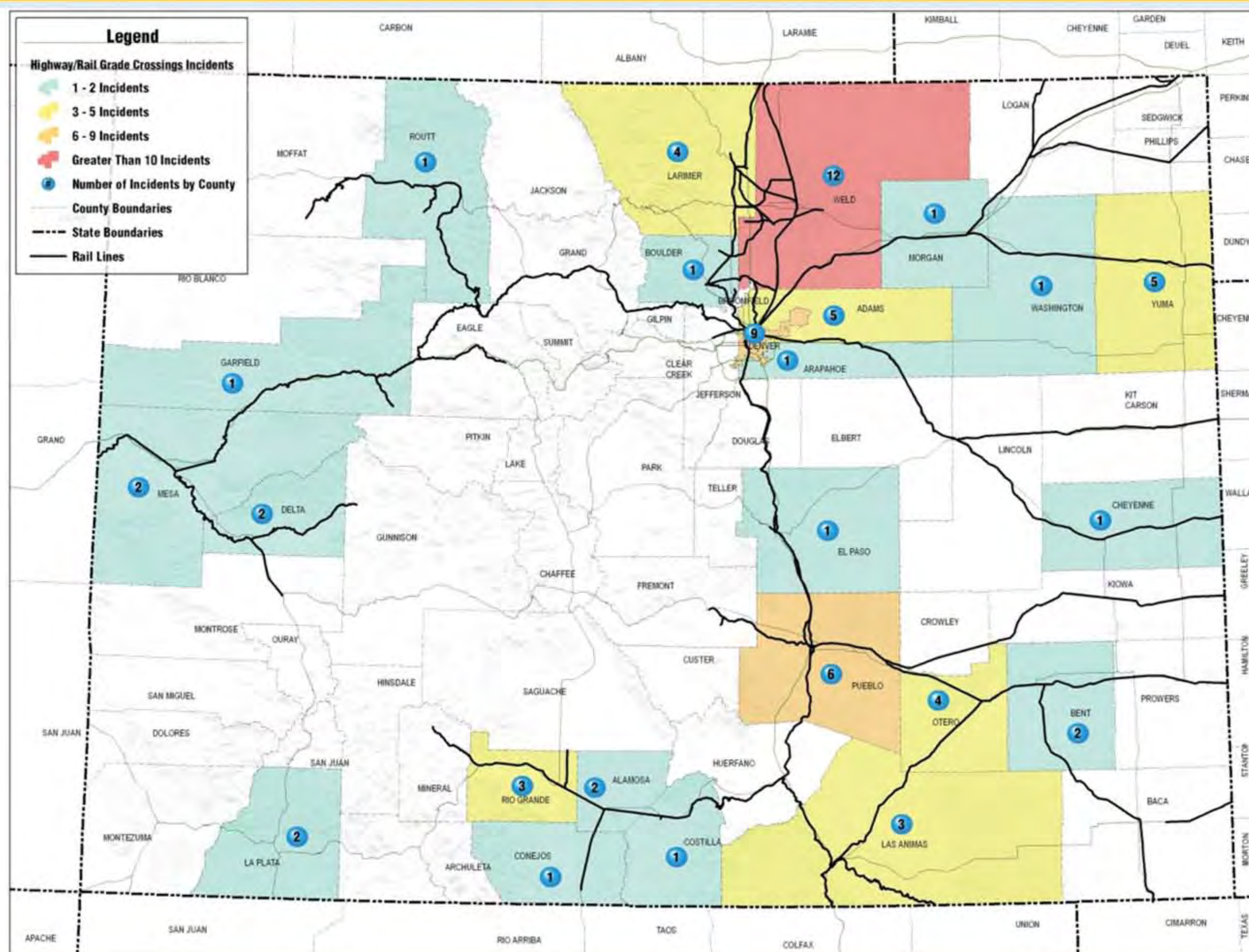
Railroad Safety in Colorado

Highway/Rail Grade Crossings

- Colorado has over 4,000 highway/rail grade crossings.
- 1,730 crossings are public. (43%)

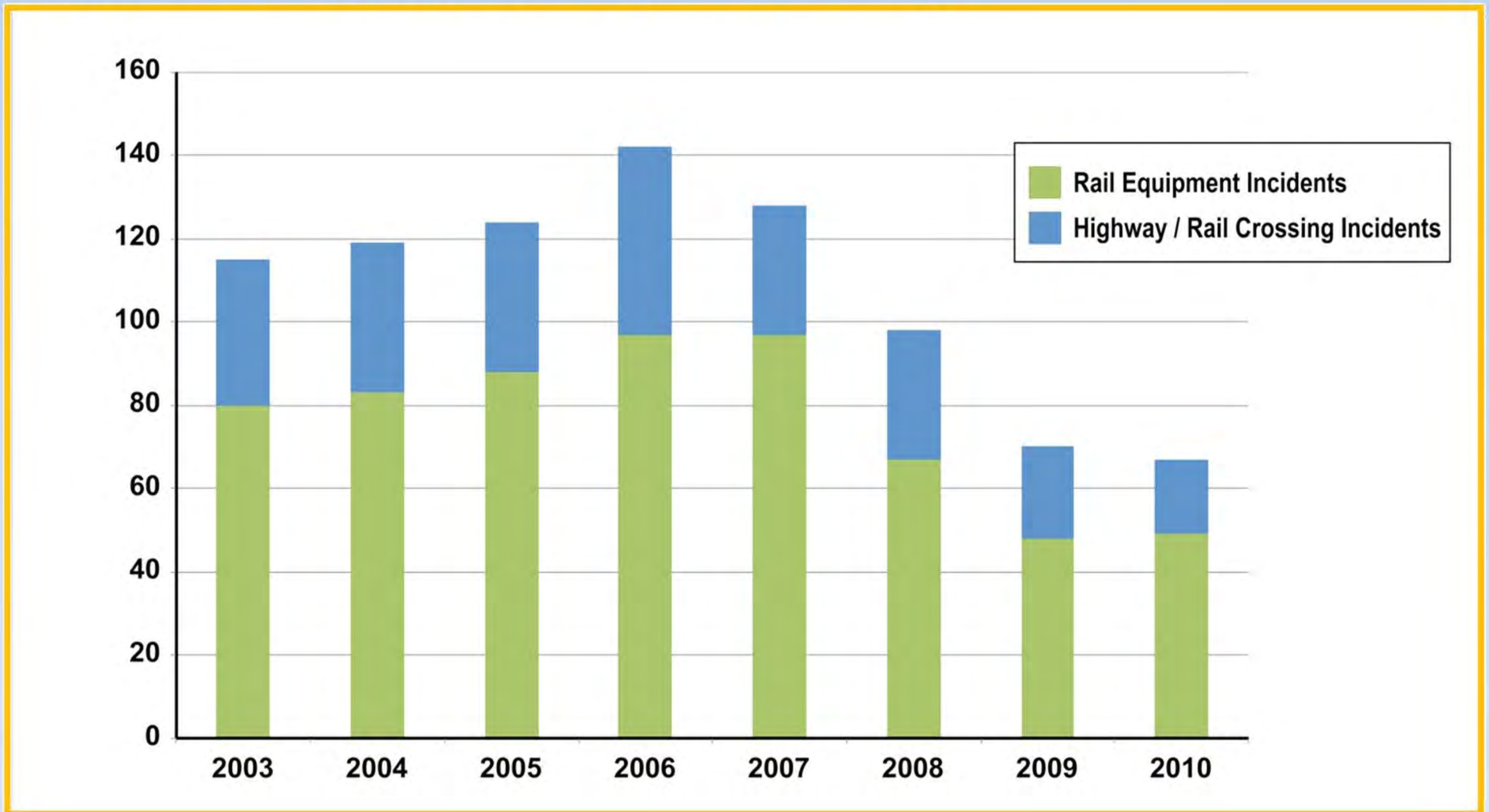


Highway/Rail Crossing Incidents (2008-2010)

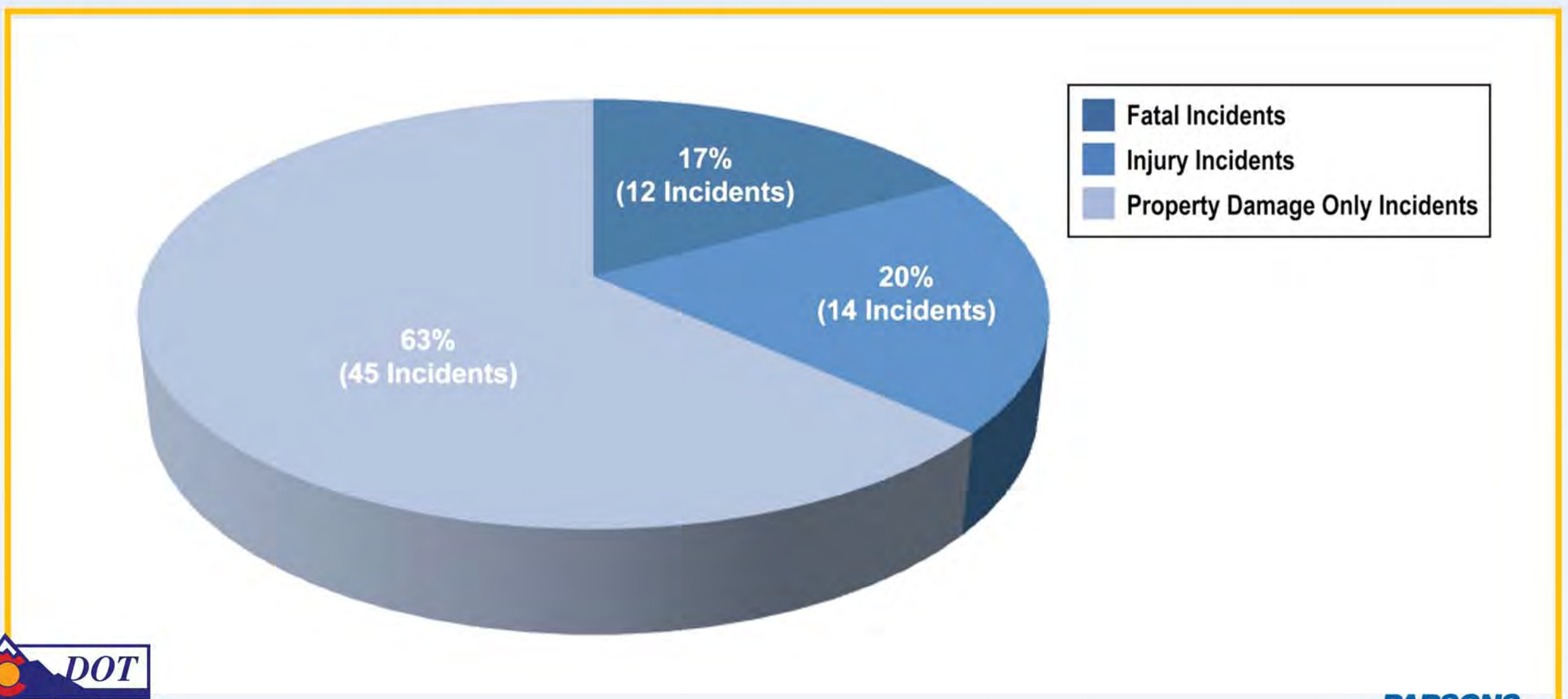


Railroad Safety in Colorado

Rail Safety Incident History



Highway/Rail Crossing Incidents by Severity (2008-2010)



Questions / Comments

Questions to be Answered

- What are the strengths of Colorado's rail transportation system?
- What are the deficiencies of Colorado's rail network?
- What improvements need to be made to Colorado's rail infrastructure and rail service?
- What should be considered in prioritizing these improvements?

For additional information

- Check the website
www.coloradodot.info/projects/passengerfreightrailplan
- Contact CDOT Project Manager
Mehdi Baziar 303-757-9047, mehdi.baziar@dot.state.co.us

