

Historic Resources

SH 7

Cherryvale Rd. to 75th St.



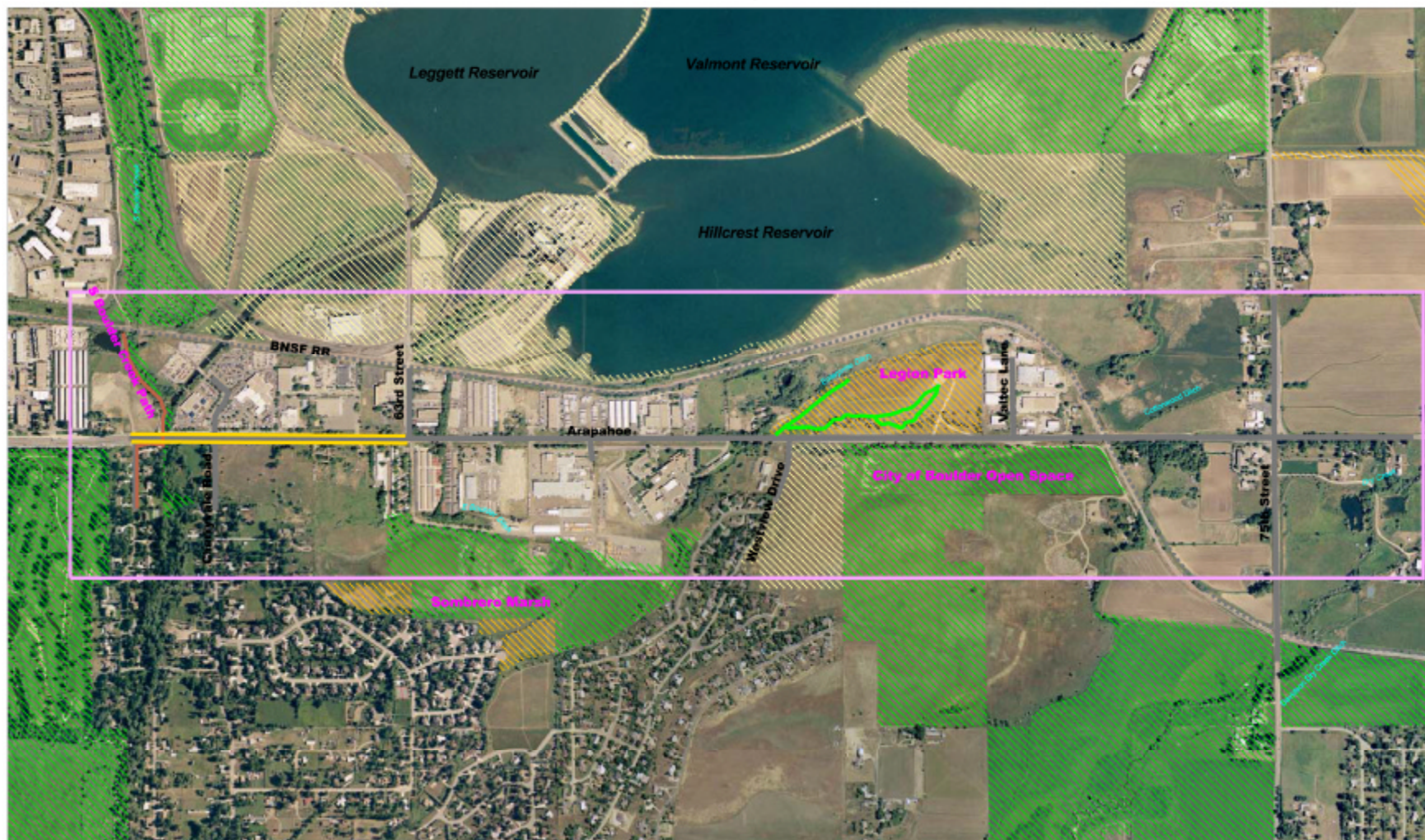
LEGEND:

- ★ Field Eligible National Historic Resources
- ★ Field Eligible Local Historic Resources

Source: State Historic Preservation Office, Field Review, 2011

800 0 800 Feet
300 0 300 Meters

Park or Recreation Sites Including Bike and Pedestrian



LEGEND:

City of Boulder Parks and Open Space	Bikeway
County of Boulder Parks and Open Space	On Shoulder Bikeway
Other non-private ownership	Trail

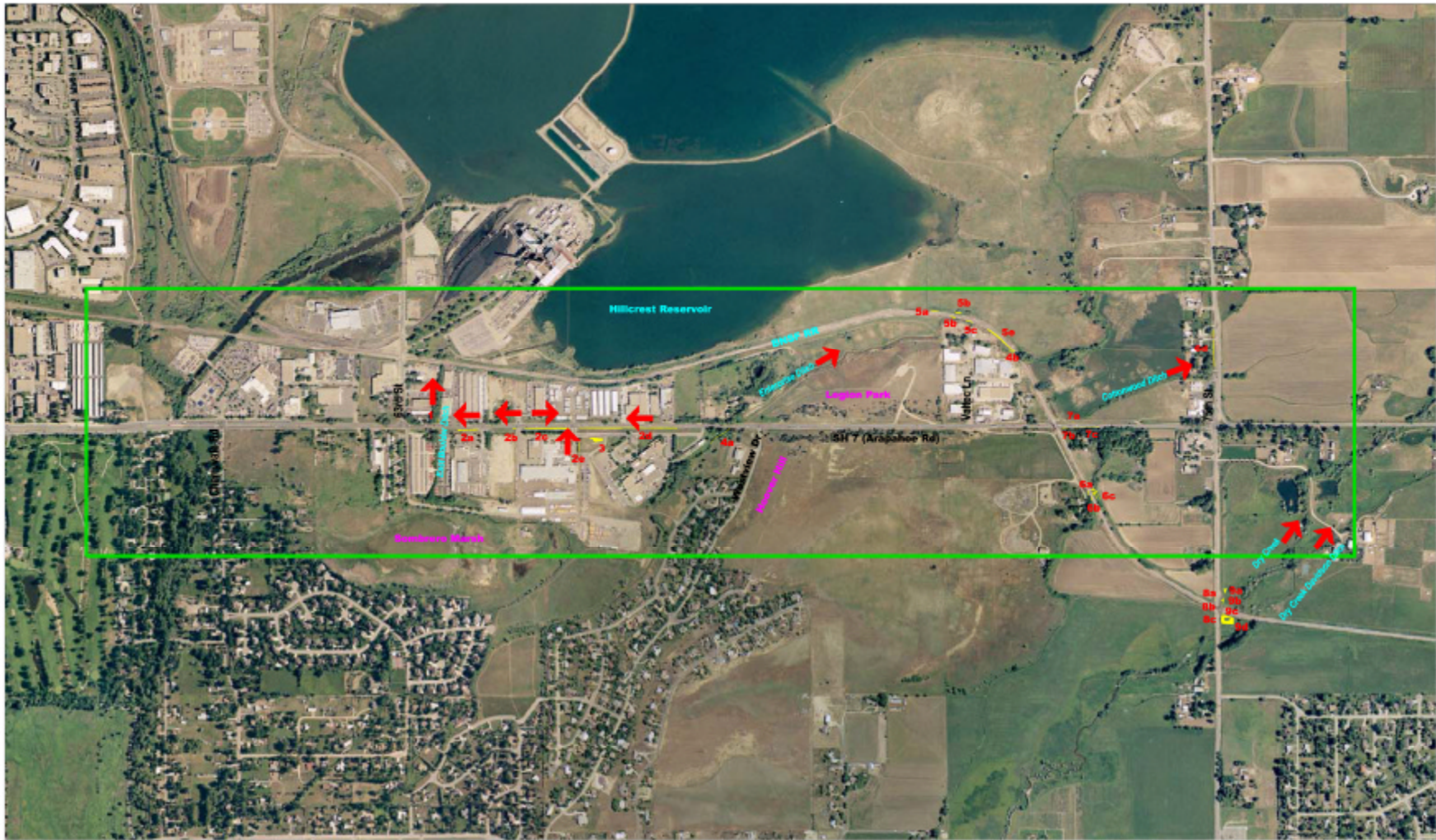
Source: County and the Department, February 2011
City of Boulder Planning 2010 and January 2011

800 0 800 Feet
300 0 300 Meters

Wetlands

SH 7

Cherryvale Rd. to 75th St.

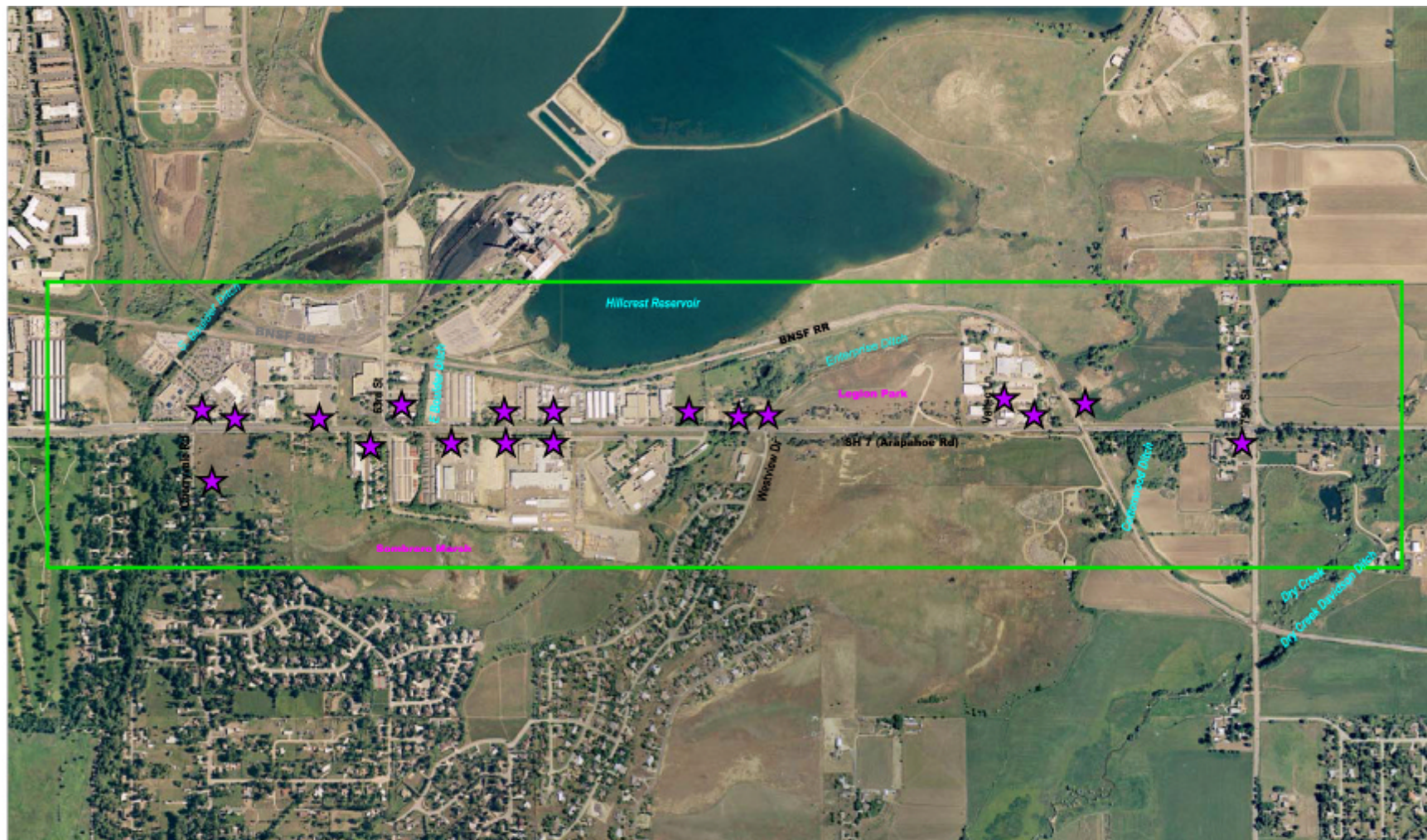


LEGEND:

- Wetlands within highway and railroad rights-of-way, or on public lands
- Direction of Flow
- 1 East Resistor Ditch
- 2 Roadside Ditches, SH 7 west of Hoover Hill
- 3 Detention Basin
- 4 Enterprise Ditch, west
- 5 Adjacent to railroad
- 6 Cottonwood Ditch, west
- 7 Roadside Ditches, SH 7 east of Hoover Hill
- 8 Roadside Ditches, 75th St.
- 9 Dry Creek Floodplain



Potential Hazardous Materials Contamination



LEGEND:

★ Sites of Potential Concern

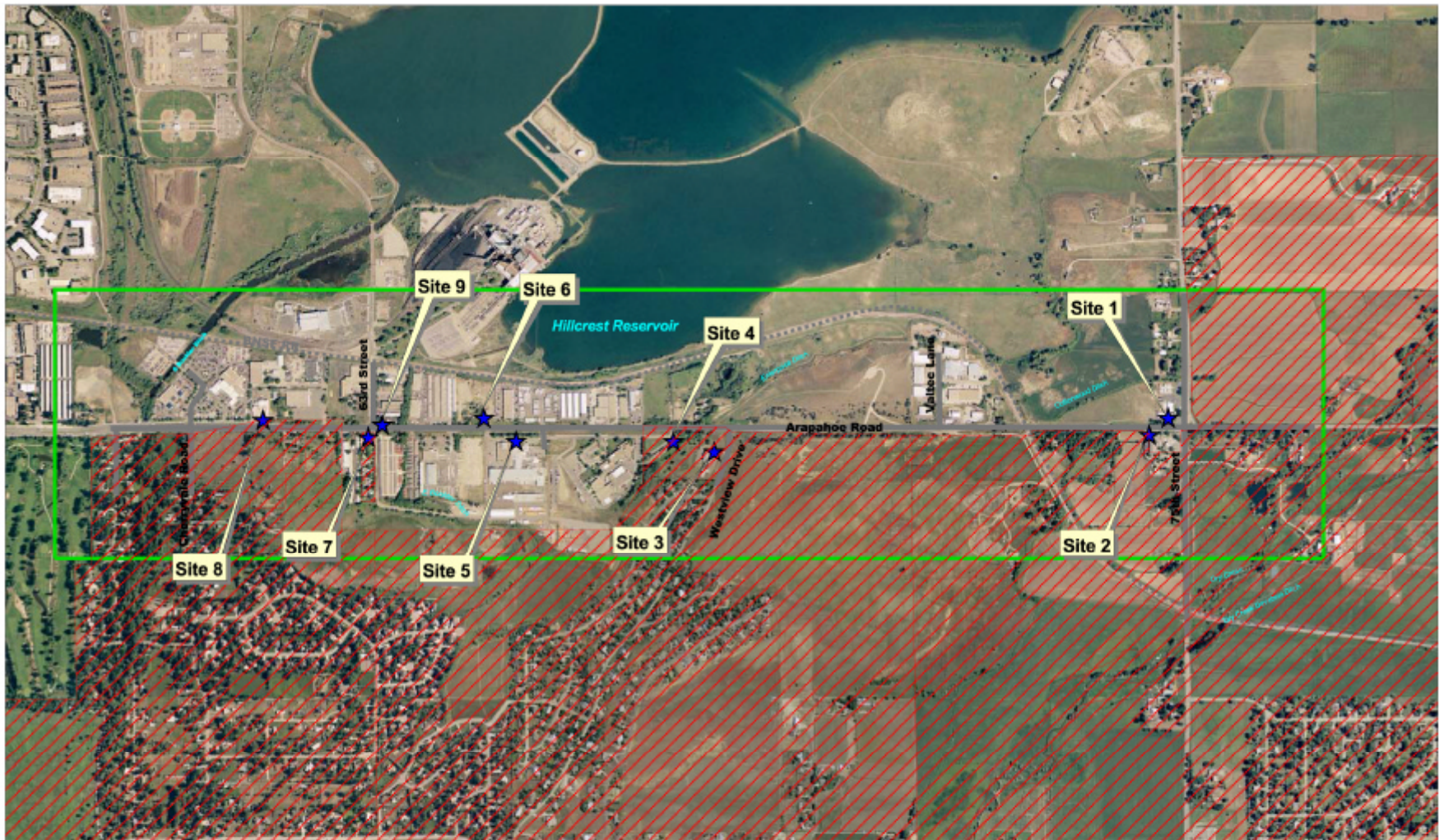
Source: Colorado Dept. of Transportation, Region 4, Hazardous Materials Database

800 0 800 Feet
300 0 300 Meters

Noise Monitoring Locations

SH 7

Cherryvale Rd. to 75th St.



LEGEND:



Noise-sensitive land use (based on zoning)



Noise monitoring sites



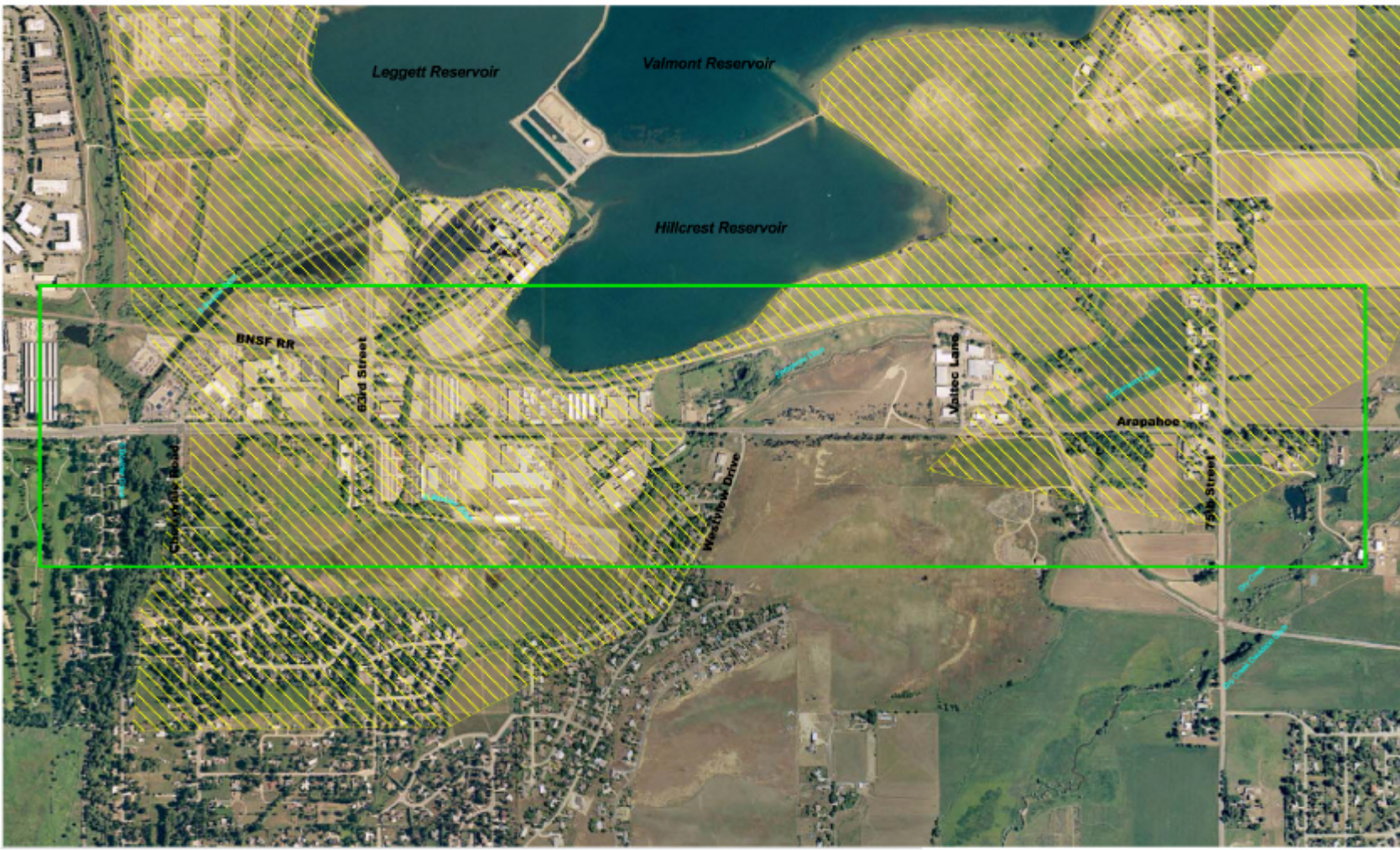
Project boundary

Source: Carter & Burgess/Johnson, 2011
Southeastern Colorado State



Soils That Can Be Considered Prime or Unique Farmland*

SH 7
Cherryvale Rd. to 75th St.



LEGEND

 Prime or Unique Farmlands

Map Date: 2004, Map Revisions: March 2005, 2004, M-12, September 12, 2007

800 0 800 Feet
300 0 300 Meters



Note: The area shown as prime or unique farmland are soil types that can be classified this way. Areas that are developed can not be prime or unique farmland.