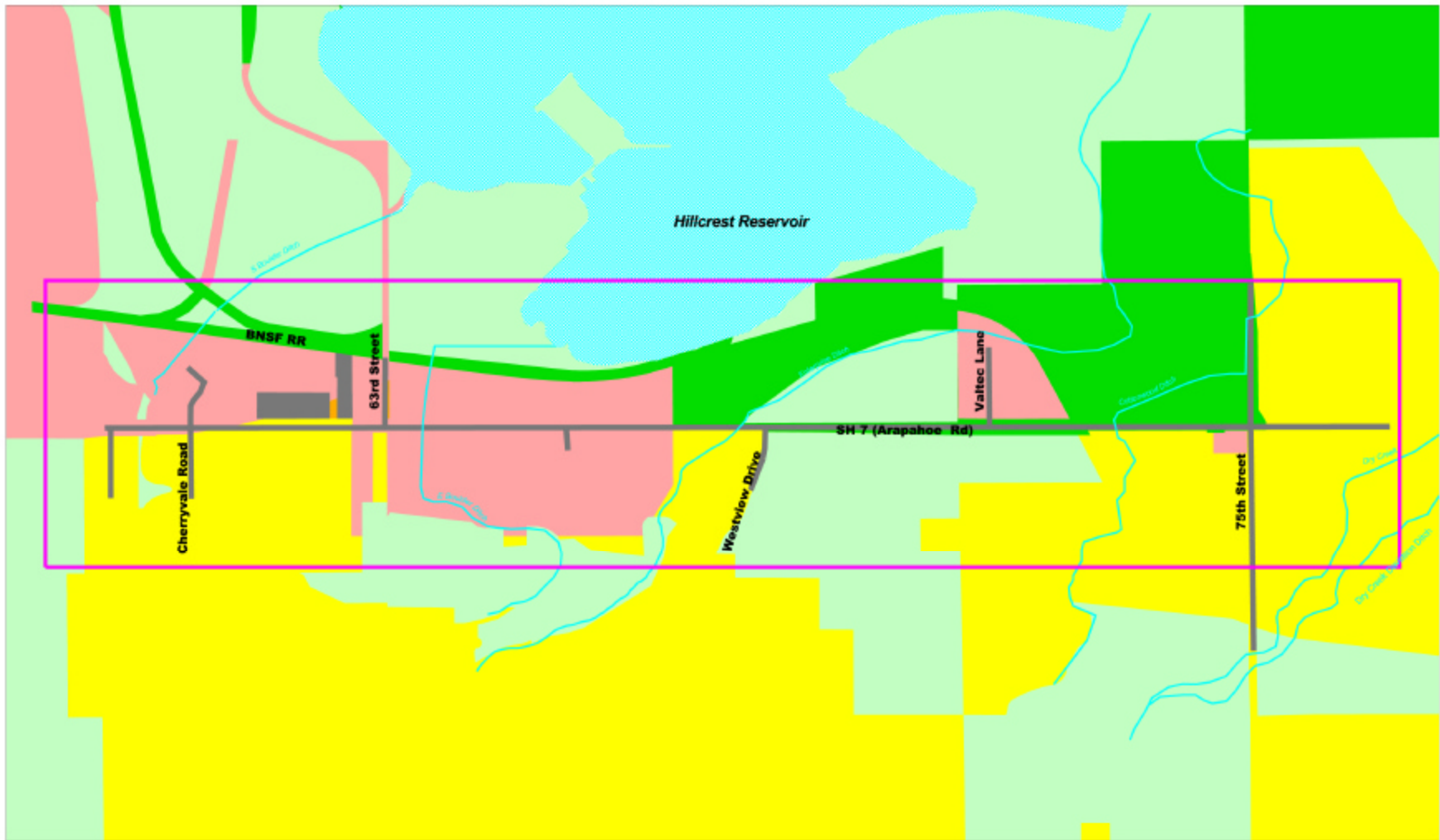


Land Use

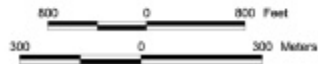
SH 7

Cherryvale Rd. to 75th St.



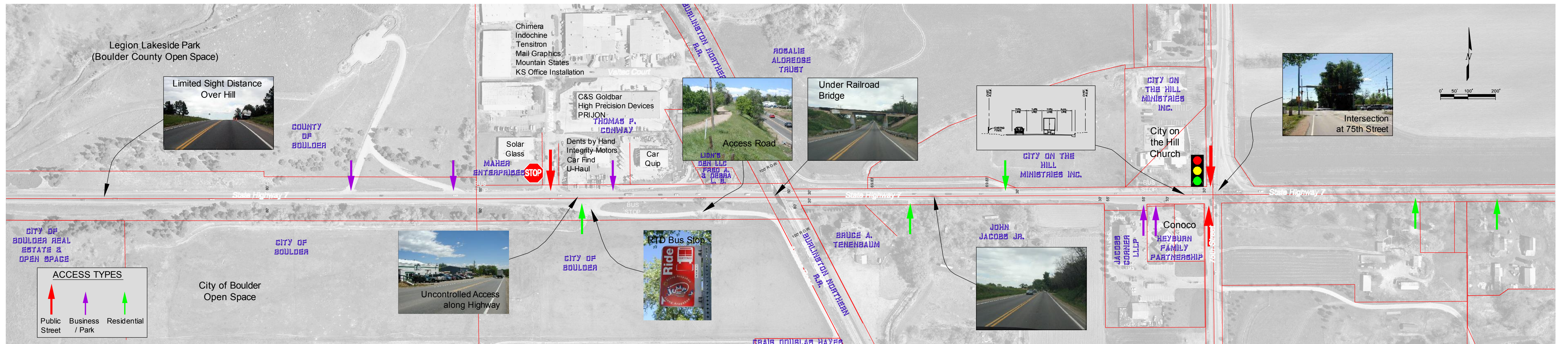
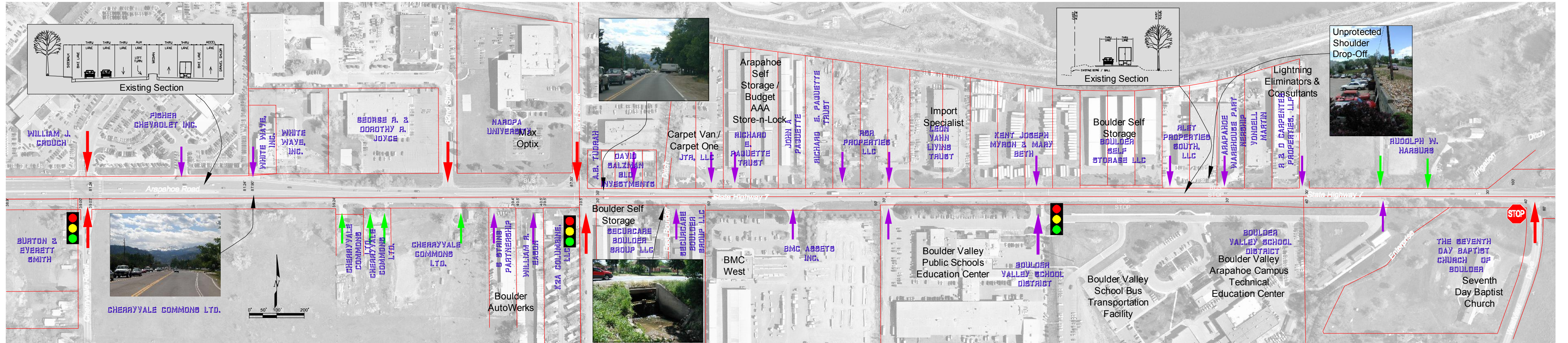
LEGEND:

- Project boundary
- Water feature
- Agricultural
- Business
- Industrial
- Residential
- Open space



STATE HIGHWAY 7

EXISTING ROADWAY CONDITIONS

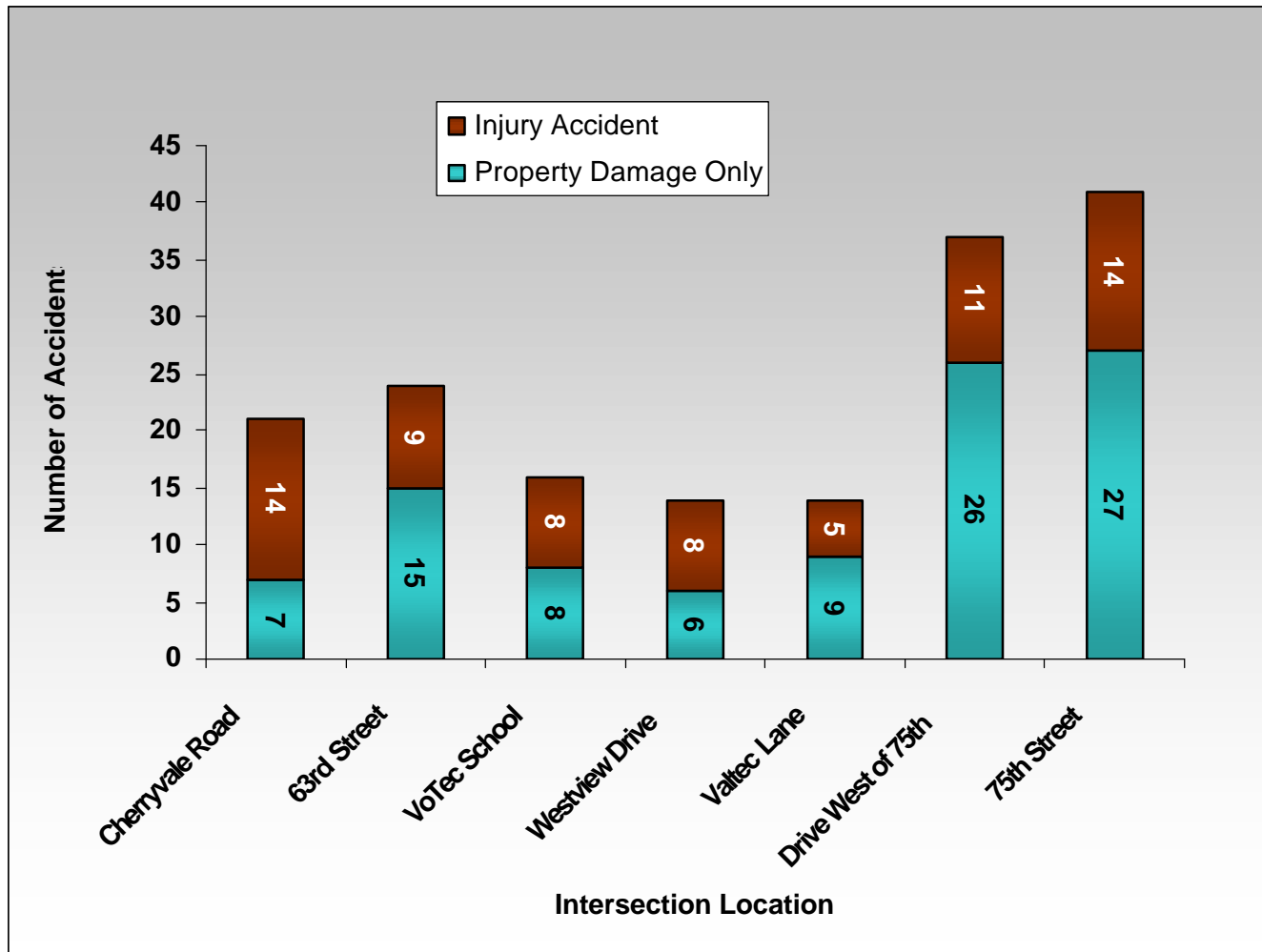


DATE: JUN 10, 2004 TIME: 5:03 PM
 NAME: P:\01-021-04 SH 7 EA\fig\04a00.dwg

Existing Transit, Bicycle and Pedestrian Facilities



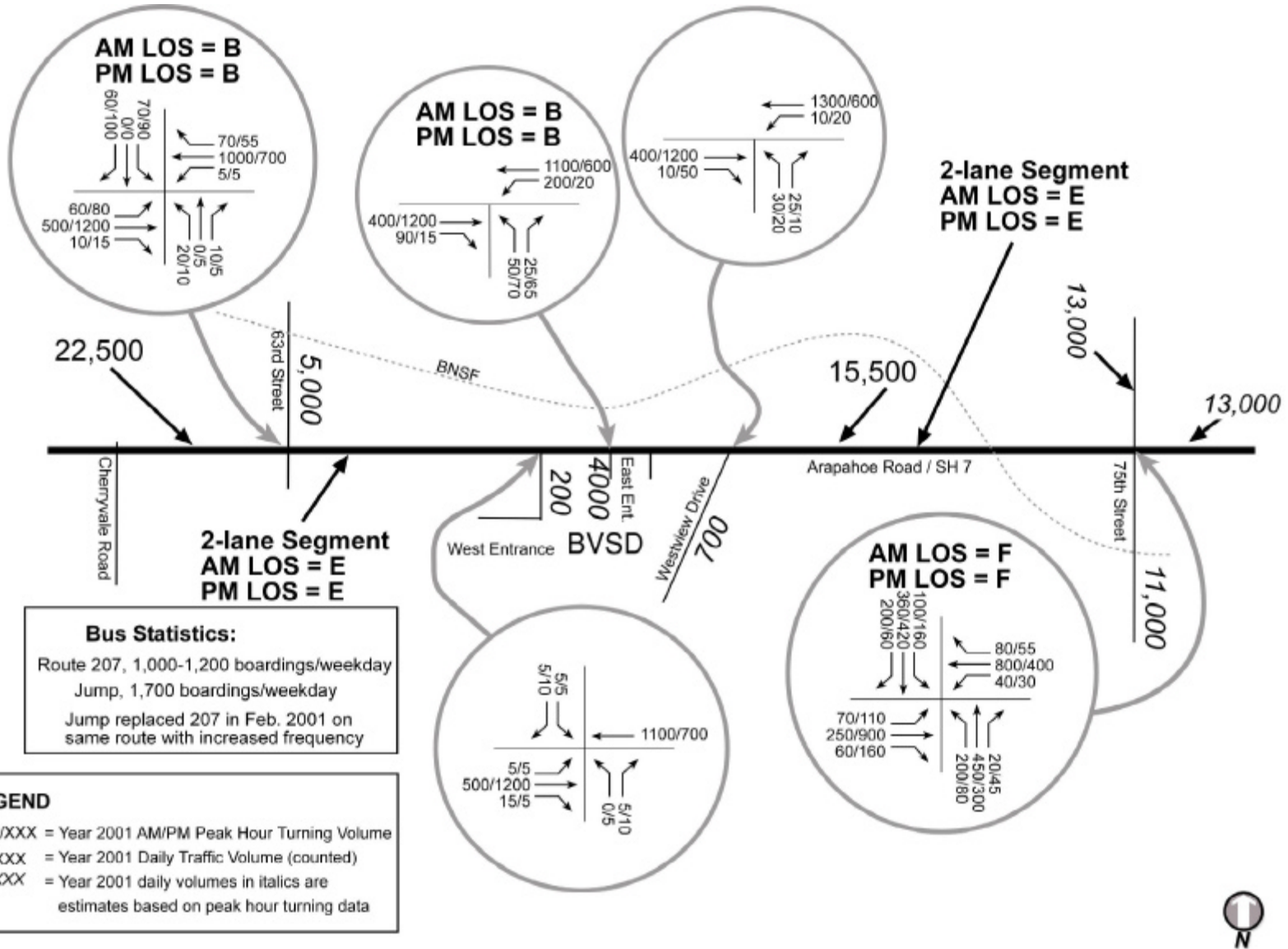
SH 7 Arapahoe Road Intersection Accident Summary March 1, 1998 to December 31, 2002



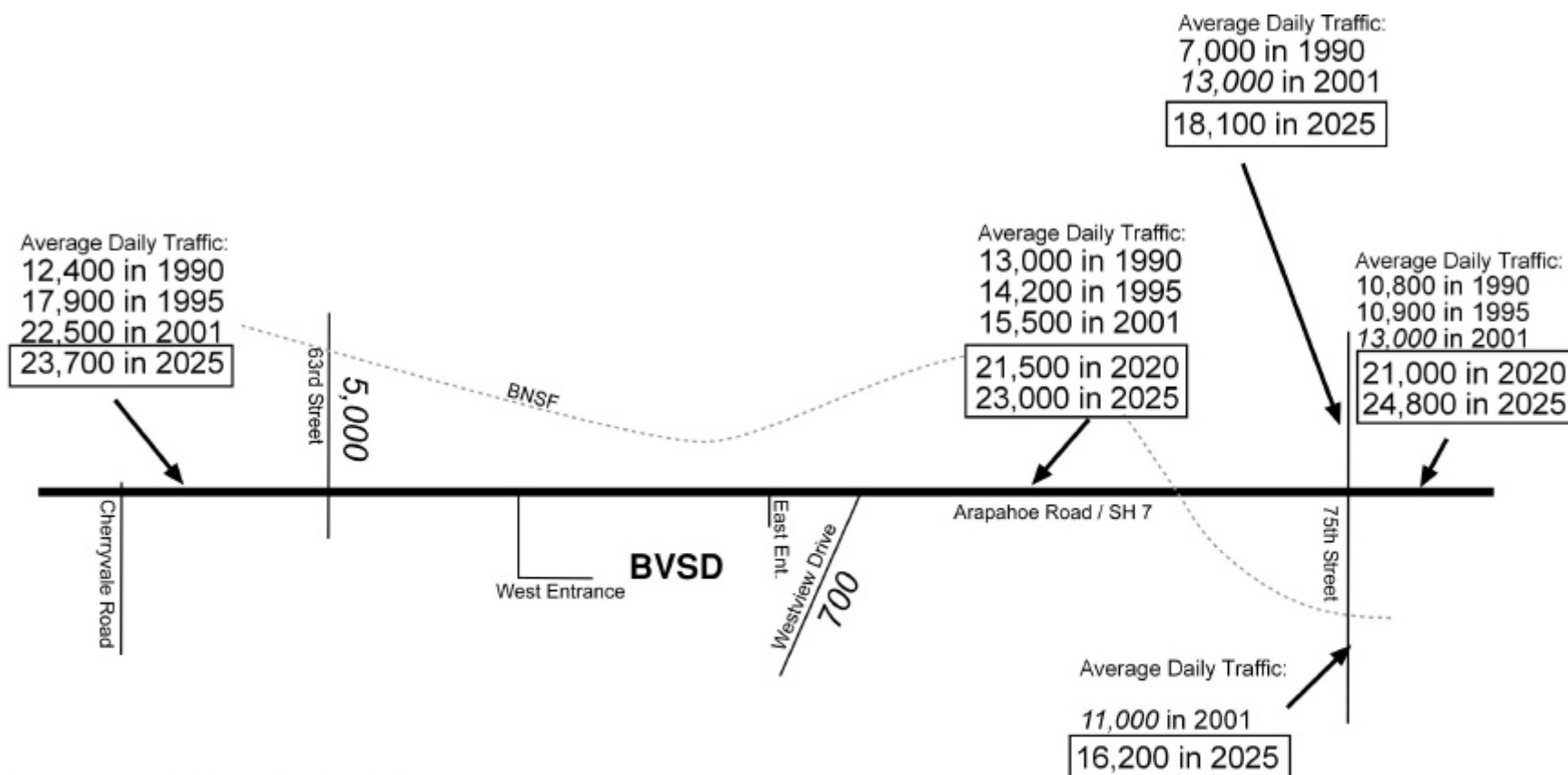
Traffic Count Data and Level of Service

SH 7

Cherryvale Rd. to 75th St.



Historic and Future Traffic in SH 7 Corridor



Source: SH 7 Feasibility Study

1990 data from City of Boulder

1995 data from Consortium of Cities

2001 data counted May, 2001

2020 forecasted data from feasibility study (in 2001/2002)

2025 raw forecasts from updated 2025 DRCOG model (Apr-2004)

2025 numbers are subject to revision



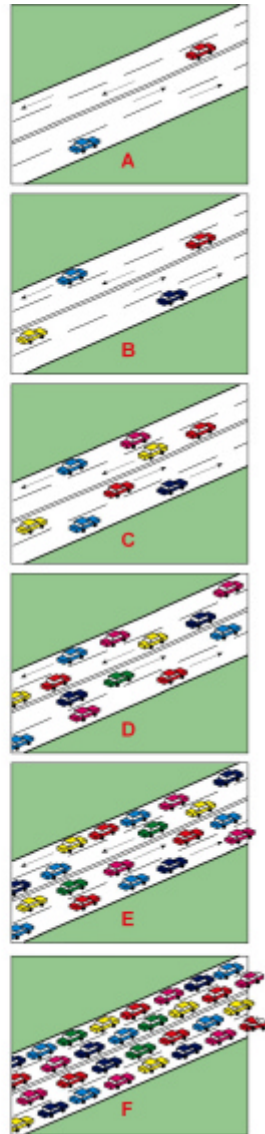
Level of Service Definitions – Urban Arterial & Intersections

SH 7

Cherryvale Rd. to 75th St.

LOS Roadway Segments

- A** Free flow, low traffic density
- B** Minimum delay, stable traffic flow
- C** Stable condition, movements somewhat restricted due to higher volumes, but not objectionable for motorists
- D** Movements more restricted, queues and delays may occur during short peaks, but lower demands occur often enough to permit clearing, preventing excessive backups
- E** Actual capacity of the roadway involves delay to all motorists due to congestion
- F** Forced flow with demand volumes greater than capacity resulting in complete congestion



LOS Intersections

- A** No vehicle waits longer than one signal indication.
- B** On a rare occasion, vehicles wait through more than one signal indication.
- C** Intermittently, vehicles wait through more than one signal indication, occasionally backups may develop, traffic flow still stable and acceptable.
- D** Delays at intersections may become extensive, but enough cycles with lower demand occur to permit periodic clearance, preventing excessive backups.
- E** Very long queues may create lengthy delays.
- F** Backups from locations downstream restrict or prevent movement of vehicles out of approach creating a "gridlock" condition.

